

Notice to Fishers

2005 HARVESTING PLAN FOR HERRING IN THE SOUTHERN GULF OF ST. LAWRENCE (HERRING FISHING AREAS 16A-16G)

Spring and Fall Quotas in the 2005 4TVn herring fishery (t) as per traditional sharing

FLEET	SPRING	FALL
Inshore fleet in Area 16	8,384	53,243
Inshore fleet in Area 17	88	700
Gulf large seiners	2,528	16,057
TOTAL	11,000	70,000

The traditional sharing of both quotas remains unchanged in 2005 with 76.83 % for the inshore fleet and 23.17 % for large seiners.

2005 Inshore fleet quota distribution (in tonnes) in HFAs 16A to 16G as per three-year rule-based quota distribution arrangement*

	SPRING	FALL
Reserve (initially distributed)	2,521	1,923
Remaining reserve **	344	101
TOTAL RESERVE	2,865	2,024
	Basic allocation including initial distribution of reserve	
16A	35	147
16B	326	25,311
16C	1,114	9,360 (16C & 16E)
16D	2,114	350
16E	3,755	See above
16F	239	9,162
16G	103	9,162
16A-G (June 1 – 15)	203	
16A-G (June 15 – 30)	173	

* This table reflects the new three-year sharing arrangement announced on April 5, 2005.

** Remaining reserve after initial distribution. For more details on inshore quota distribution rules, please refer to the April 5, 2005 announcement.

2005 Management measures

Spring inshore gillnet fishery

- A Dockside Monitoring Program (DMP) with 100% dockside verification will be required in HFAs 16C and 16E, and a Catch Monitoring Program (CMP) with 100% radio hail and 25% verification at dockside for the other areas (HFAs 16A, B, D, F, and G). The DMP companies will have to provide daily to DFO, the amount of herring landed per fisher.
- A weekly landing limit of 45,360 kg (100,000 lb.) will continue to be implemented in HFAs 16C and 16E.
- Landings are counted against the quota in the area where the fish is landed when the said area is open. Landings are counted against the quota in the adjacent area when the fish is landed in a closed area. However, enhanced enforcement will take place.
- The spring inshore commercial herring fishery will be closed from April 1 to June 30 in a portion of HFA 16G off the northeast coast of PEI as per the May 13 announcement (See Annex 5 for a map of the closed area).
- Other management measures are outlined in Annex 1

Spring fishery in HFA 16D (Magdalen Islands)

- Fishers will continue to be required to complete and submit a logbook for the commercial and the bait fishery.
- Mandatory Catch Monitoring Program with 100 % radio hail and 25 % verification at dockside will continue.
- A weekend closure (from Saturday at noon until Sunday at noon) for both the commercial and the bait fishery will be maintained.
- Fishers will be limited to a maximum of 25 nets (420 fathoms) and there will be no trip limit.
- No nets will be allowed to be set in an exclusion zone at the entrance of the Grande-Entrée Channel to allow herring to access the main spawning area in Grande-Entrée Bay.

Fall inshore gillnet fishery

- Dockside Monitoring Program (DMP) and weekend closures are a requirement in most fishing areas.
- Gillnets are restricted to a maximum of 150 fathoms in length, 125 mesh deep (100 mesh deep in 16G), with a minimum mesh size of 2-5/8 inches (2-1/2 inches in 16A).
- Other management measures are outlined in Annex 2.

Summer fishery in a portion of HFA 16E

There will be a summer herring fishery (starting on July 3, 2005) in a portion of HFA 16E with a set quota of 500 t. The objective of the summer fishery is to provide some fishing opportunities to herring fishers who have had a very limited or non-existent fishery in the spring.

To allow for a reasonable distribution of the resource among fishers, the fishery will only open in the waters inside a line from Fagan Point, N.B. to Cape Egmont, P.E.I., and the lobster line separating

Lobster Fishing Areas 25 and 26A from Victoria Harbour, P.E.I. to Pugwash, N.S. (see Annex 3). The remainder of 16E will remain closed until the opening of the fall fishery (August 21).

Fishers will have to choose between a summer fishery (starting on July 3) and a fall fishery (August 21 to December 31). Those who will opt for a summer fishery will be required to surrender their September to December licence conditions and request an amendment from their local Licensing Service Centre before they are authorized to participate in this fishery. The fishery will open at noon (12:00 p.m.), Atlantic Time, on July 3.

Any uncaught quota from the summer fishery will be transferred to the last period of the main roe fishery.

Chaleurs Bay (HFA 16B) fall fishery

Early Fishery

As in previous years, there will be an early fishery starting July 3 until August 7. One hundred tonnes (100 t) of any uncaught quota will be transferred to the late fishery, and the rest will be transferred to the roe fishery (to be used in a test fishery).

Main roe fishery

The roe fishery will open on August 14. However, an industry-led test fishery will be conducted between August 7 and August 14 to determine if the roe yield is optimal and if the opening date will remain August 14, or if it will be set earlier. A conference call will be held if required.

The fishery will be closed daily between 13:00 hrs. and 16:00 hrs. (Atlantic Daylight Time) and every weekend from 13:00 hrs. on Saturday until 16:00 hrs. on Sunday (Atlantic Daylight Time). No nets will be allowed in the water during these closed periods.

Late fishery

As in past years, there will be a late fishery beginning 2 weeks after the roe fishery. Fishers will be limited to the area west of a rhumb line joining the Grande-Anse lighthouse in N.B. and the Pointe-à-Maquereau lighthouse in Gaspésie (Québec).

Fishermen's Bank and Northeast PEI (HFA 16G) fall fishery

The fall fishery in HFA 16G will occur in two distinct periods and zones within HFA 16G to allow for a reasonable distribution of the resource among fishers.

Fishers will have to choose between a Northside and a main roe (Fisherman's Bank) fishery. Those who opt to fish in the northern portion of HFA 16G, as identified in Annex 4, (the Northside of P.E.I.), can apply for conditions of licence at the P.E.I. Licensing Service Centre in Charlottetown. They will be required to remain on the Northside for the remainder of the season. The Northside fishery will begin at 18:00 hrs. on July 17, and fishers will fish against an 800 t reserve quota until August 21 or until the 800 t is caught. On August 21, 18:00 hrs., these fishers will fish against the remaining 16G quota but must remain within the defined area, until the fishery closes.

The main roe fishery (Fishermen's Bank) will begin at 18:00 hrs. on August 21 and will continue until the quota is caught and the fishery closes. Fishers fishing in the main roe fishery will not be allowed to fish on the Northside.

Bait fishery

Bait licences are issued upon request to fishers who hold a licence for a species and gear that requires bait. Since 2003, herring and mackerel bait licences have been combined to facilitate enforcement work by fishery officers. With the bait licence, a fisher may only fish for their own use up to a maximum of 50 fathoms of gillnets.

The minimum mesh size will be 2-¼ inches from January 1 to June 30 and 2-5/8 inches (2 1/2 inches in 16A) from July 1 to December 31. In 2005, the maximum quantity of herring or mackerel or the combination of both species a fisher is permitted to catch and retain at any time is 907 kg (2,000 lb.) or 38 cu. ft. in total.

While fishing under the authority of a commercial herring, mackerel or gaspareau licence, bait licences are not valid. Furthermore, a fisher cannot fish under the authority of a bait licence in the same calendar day that they have landed herring, mackerel or gaspareau under the authority of a commercial licence. It is strictly forbidden to sell any species of fish caught under the authority of a bait licence.

Starting in 2005, bait fishers will be responsible for reporting catch and effort information on a Bait Monitoring Document, and to ensure catch information is entered in the DFO database.

Note1: Following the May 13, 2005 announcement, the department will be examining introduction of a comprehensive monitoring system for the bait fishery in the Southern Gulf for 2006.

Note2: In the context of the May 13, 2005 announcement, the department will rescind the decision to restrict bait fishing to the waters south of the 17-fathoms line in waters off the northeast coast of PEI for the last three months of 2005. Fishers who have received their 2005 herring/mackerel bait licence conditions and wish to have this restriction removed should present themselves to their local Licensing Service Center (LSC) with their herring/mackerel bait licence conditions.

Large seiners fishery

- The spring season runs from January 1 to June 30.
- A cap on fall spawners of 8,028 t (50% of the large seiners 4TVn fall spawners quota of 16,057 t) in the Chaleurs Bay is maintained. The composition of the catches will be used to determine the quantity of spring and fall spawners to be fished in the Chaleurs Bay.
- The finalization of management measures for the fall fishery in the Chaleurs Bay will be announced at a later date as further discussion with all parties are required.
- The use of a mid-water trawl for three seiners to fish herring and mackerel in HFA 16 (excluding Chaleurs Bay) from April 1 to December 31 is authorized with the appropriate monitoring and control mechanisms to prevent high catches of small fish.

- Uncaught quota from the spring will be transferred to the fall, and access to the northern portion of 4Vn (HFA 17) will be authorized. However, the amount and the conditions under which the fishery will take place in 4Vn will be addressed in the Maritimes Region Herring Management Plan.
- All vessels must be equipped with a functional Vessel Monitoring System during fishing activities.
- There will be a minimum of 10 % at-sea observer coverage during fishing activities.
- The large seiner herring fishery will be closed from January 1 to December 31 in a portion of HFA 16G off the northeast coast of PEI as per the May 13 announcement (See Annex 5 for a map of the closed area).

ANNEX 1

SPRING INSHORE MANAGEMENT MEASURES BY HFA - 2005						
Fishing Area	Dockside Monitoring Program (DMP) or Catch Monitoring Program (CMP)	Quota	Period	Net (size / mesh deep / length)	Weekend Closures	Trip Limit
16A – Île Verte	CMP - declaration of 100% of catches through the radio and dockside verification for 25% of landings	35	January 1 to June 15	2 ¼ in. min / 125 meshes / 500 fath.	None	No Limit
16B – Baie des Chaleurs (fixed gear)	CMP - declaration of 100% of catches through the radio and dockside verification for 25% of landings	326	January 1 to June 15	2 ¼ in. min / 125 meshes / 500 fath.	None	No Limit
Small Seiners		Up to 22.75% (74 t) of 16B spring allocation	January 1 to June 15	N/A	None	No Limit
16 C– Escuminac	DMP	136	April 1 –5h59 April 23	2 ¼ in. min / 125 meshes / 500 fath.	None	Weekly limit of 45 360 kg (100 000 lb)
		842	6h00 April 23 – 5h59 May 16		None	
		136	6h00 May 16 – June 15		None	
16D – Magdalen Islands	CMP - Well-keeping of a logbook, declaration of 100% of catches through the radio and dockside verification for 25% of landings	2,114	January 1 to June 15	2 ¼ in. min / 125 meshes / 420 fath.	Noon Saturday to noon Sunday	No Limit
16E – Western PEI, south-eastern NB and northern GNS	DMP	368	April 1 –5h59 April 23	2 ¼ in. min / 125 meshes / 500 fath.	None	Weekly limit of 45 360 kg (100 000 lb)
		3019	6h00 April 23 – 5h59 May 16		None	
		368	6h00 May 16 –June 15		None	
16F – Pictou	CMP - declaration of 100% of catches through the radio and dockside verification for 25% of landings	239	January 1 to June 15	2 ¼ in. min / 150 meshes / 500 fath.	None	No Limit
16G – Fishermen's Bank	CMP - declaration of 100% of catches through the radio and dockside verification for 25% of landings	103	January 1 to June 15	2 ¼ in. min / 125 meshes / 500 fath.	None	No Limit
16A-G	CMP - declaration of 100% of catches through the radio and dockside verification for 25% of landings	203	June 1 – June 15	2 ¼ in. min / 125 meshes / 500 fath.	None	No Limit
		173	June 16 – June 30		None	No Limit

ANNEX 2

FALL INSHORE MANAGEMENT MEASURES BY HFA – 2005

Fishing Area	DMP/CMP	Quota	Period	Net (size / mesh deep / length)	Weekend Closures	Trip Limit
16A – Île Verte	CMP - declaration of 100% of catches through the radio and dockside verification for 25% of landings	147	July - December	2 ½ in. min / 125 mesh / 150 fath.	None	One landing a day of 20,000 lb.
16B – Baie des Chaleurs (Fixed Gear)	DMP in NB CMP in P.Q. - declaration of 100% of catches through the radio and dockside verification for 25% of landings	701 (1)	July 3 – August 7	2 5/8 in. min / 125 mesh / 150 fath.	None	One landing a day of 20,000 lb.
		23,421 (2)	Roe fishery: Aug. 14 – Oct. 31		13:00 Saturday to 16:00 Sunday 13:00 to 16:00 every day	One landing a day of 20,000 lb.
		420	Late fishery – 2 weeks after the roe fishery		None	One landing a day of 20,000 lb.
Small Seiners	DMP	769	July - December	N/A	N/A	N/A
16 C&E – Escuminac, Western PEI and northern GNS	DMP	500 (3)	July 1 – Aug 19	2 5/8 in. min / 125 mesh / 150 fath.	18:00 Friday to 17:59 Sunday	One landing a day of 12,500 lb.
		3,190	Aug. 21 - Aug. 28		None	More than one landing a day but not more than 20,000 lb in total per day
		3,190	Aug. 28 - Sept. 4			
		2,480	Sept. 4 - Dec. 31			
16D –Magdalen Islands	CMP - Well-keeping of a logbook, declaration of 100% of catches through the radio and dockside verification for 25% of landings	350	July 1 – December 31	2 5/8 in. min / 125 mesh / 150 fath.	Noon Saturday to Noon Sunday	One landing a day of 20,000 lb.
16F – Pictou	DMP	9,162	To be determined	2 5/8 in. min / 125 mesh / 150 fath.	To be determined	To be determined
16G –Northside	DMP	800 (4)	July 17 – Dec 31	2 5/8 in. min / 125 mesh / 150 fath.	18:00 Friday to 17:59 Sunday	More than one landing a day but not more than 15,000 lbs per day
16G – Fishermen's Bank		8,362	Aug. 21– Dec 31	2 5/8 in. min / 100 mesh / 150 fath.	15:00 Friday to 14:59 Sunday	

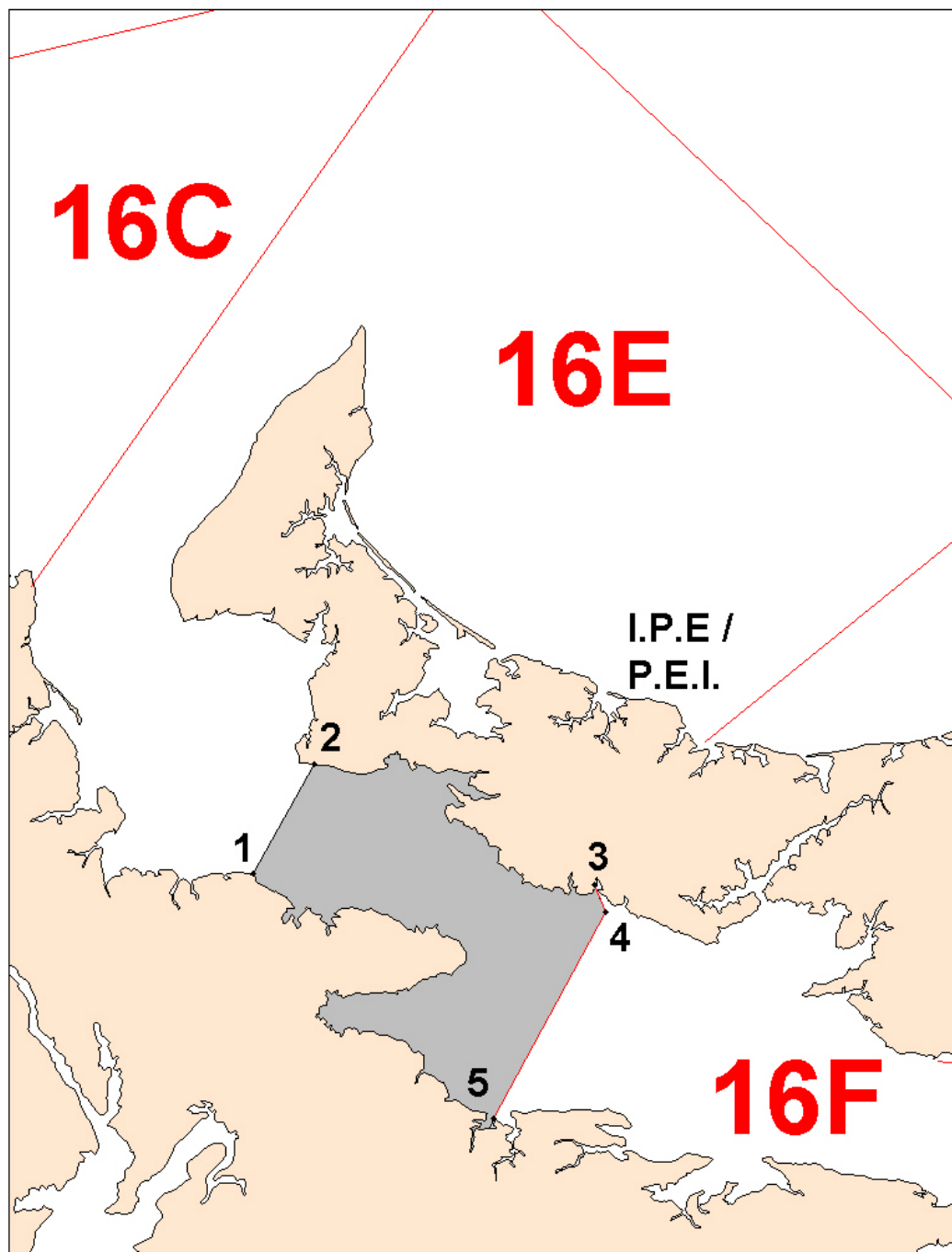
1 – If any quota remains from the early fishery, 100 t will be added to the late fishery, and the remainder will be added to the roe fishery.

2 – A test fishery will be conducted from August 7 to August 14, using the remainder of the early quota. If roe yields are optimal, the roe fishery may begin earlier.

3 – A portion of 16E is open. Fish caught in that portion of 16E must be landed in that open area.

4 – Reserve quota to be fished in the Northern portion of HFA 16G until Aug. 21. On Aug. 21, any uncaught portion will return to the global 16G allocation.

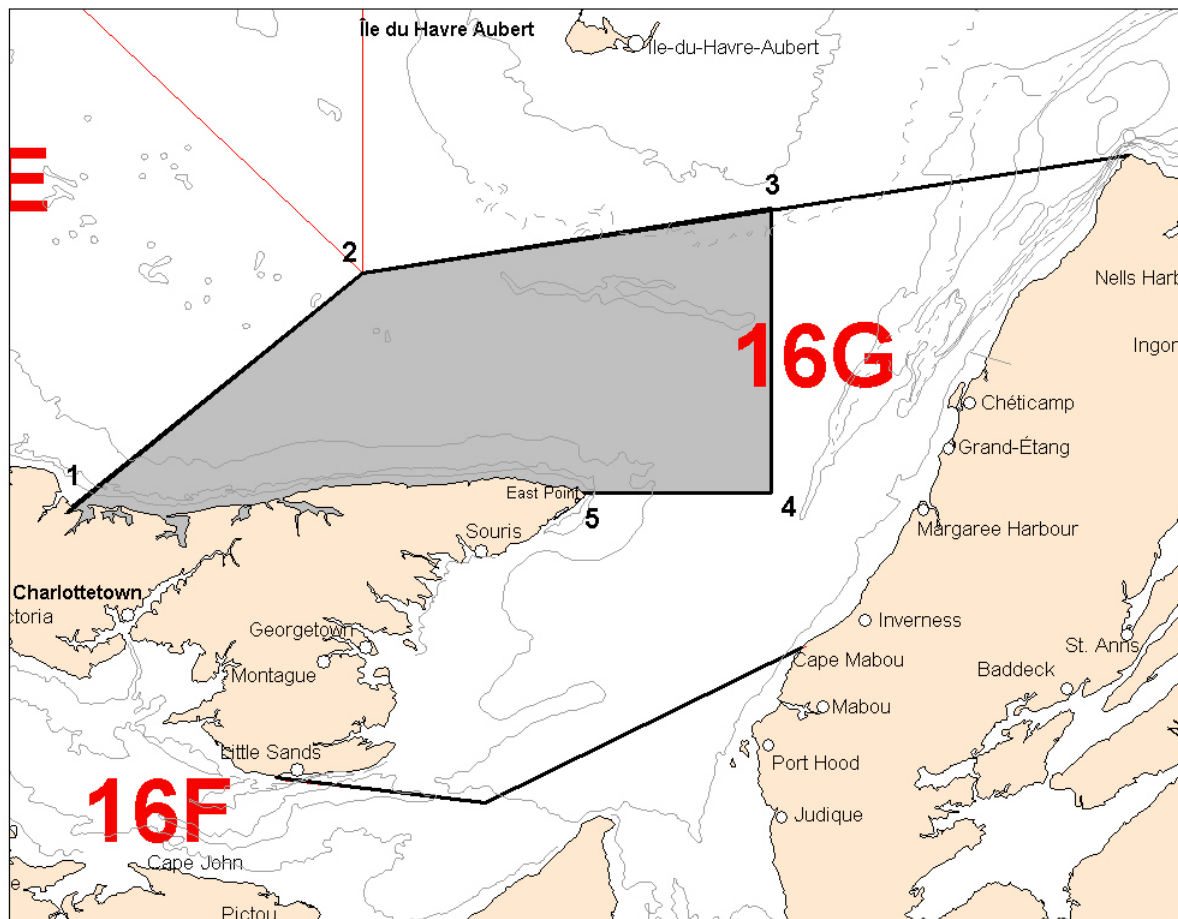
ANNEX 3
Summer fishery in a portion of HFA 16E



The summer fishery is to be conducted in that portion of 16E inside lines drawn from:

- | | |
|------------------|-----------------------------|
| 1. 46° 14' 00" N | 64° 14' 00" W (FAGAN POINT) |
| 2. 46° 24' 00" N | 64° 06' 00" W (CAPE EGMONT) |
| 3. 46° 12' 58" N | 63° 29' 26" W |
| 4. 46° 10' 35" N | 63° 28' 03" W |
| 5. 45° 51' 45" N | 63° 42' 42" W |

ANNEX 4
Northern portion of HFA 16G

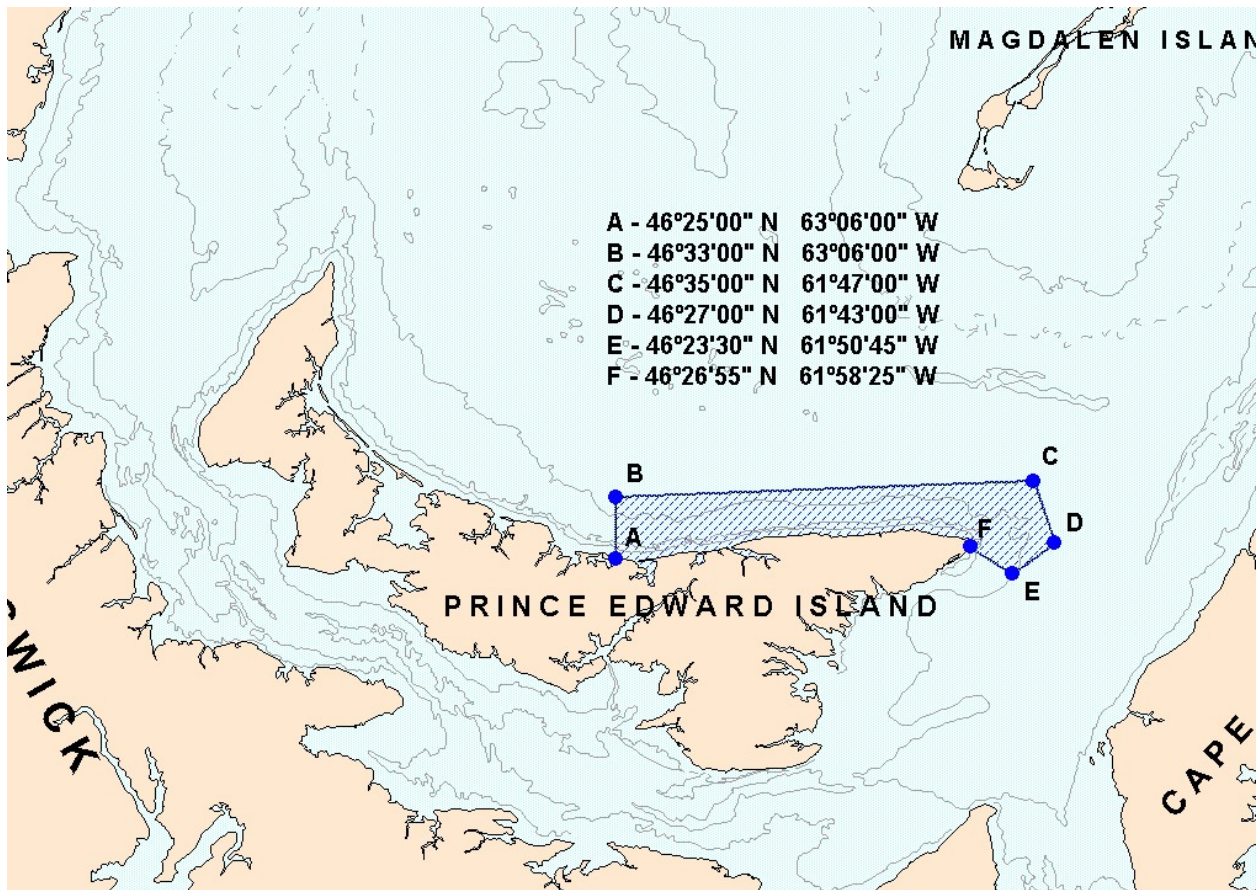


The Northern portion of HFA 16G is defined as that portion of Herring Fishing Area 16G inside a line drawn from:

1. 46° 26' 00" N - 63° 15' 00" W
2. 46° 50' 00" N - 62° 32' 00" W
3. 46° 56' 42" N - 61° 30' 00" W
4. 46° 26' 55" N - 61° 30' 00" W
5. 45° 26' 55" N - 61° 58' 25" W (EAST POINT)

ANNEX 5

Closure of the commercial inshore herring fishery off northeast PEI (April 1 to June 30) and of the large seiner herring fishery (year-round)



FOR MORE INFORMATION, PLEASE CONTACT YOUR LOCAL AREA OFFICE:

Michel Albert
Resource Management
Fisheries and Oceans
Tracadie, NB
(506) 395-7718

Colin MacIsaac
Resource Management
Fisheries and Oceans
Charlottetown, PEI
(902) 566-7815

Paul Boyd
Resource Management
Fisheries and Oceans
Antigonish, NS
(902) 863-5670

Liette Bernatchez
Resource Management
Fisheries and Oceans
Gaspé, QC
(418) 368-5559

Sylvette Leblanc
Resource Management
Fisheries and Oceans
Cap-aux-Meules, QC
(418) 986-2095