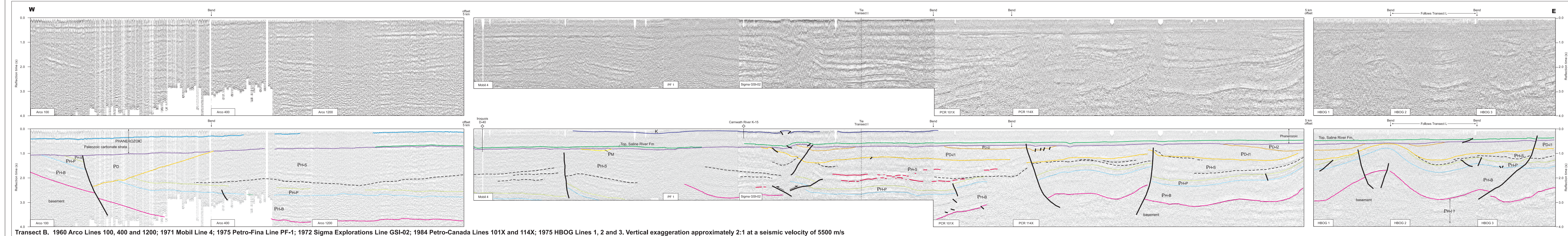
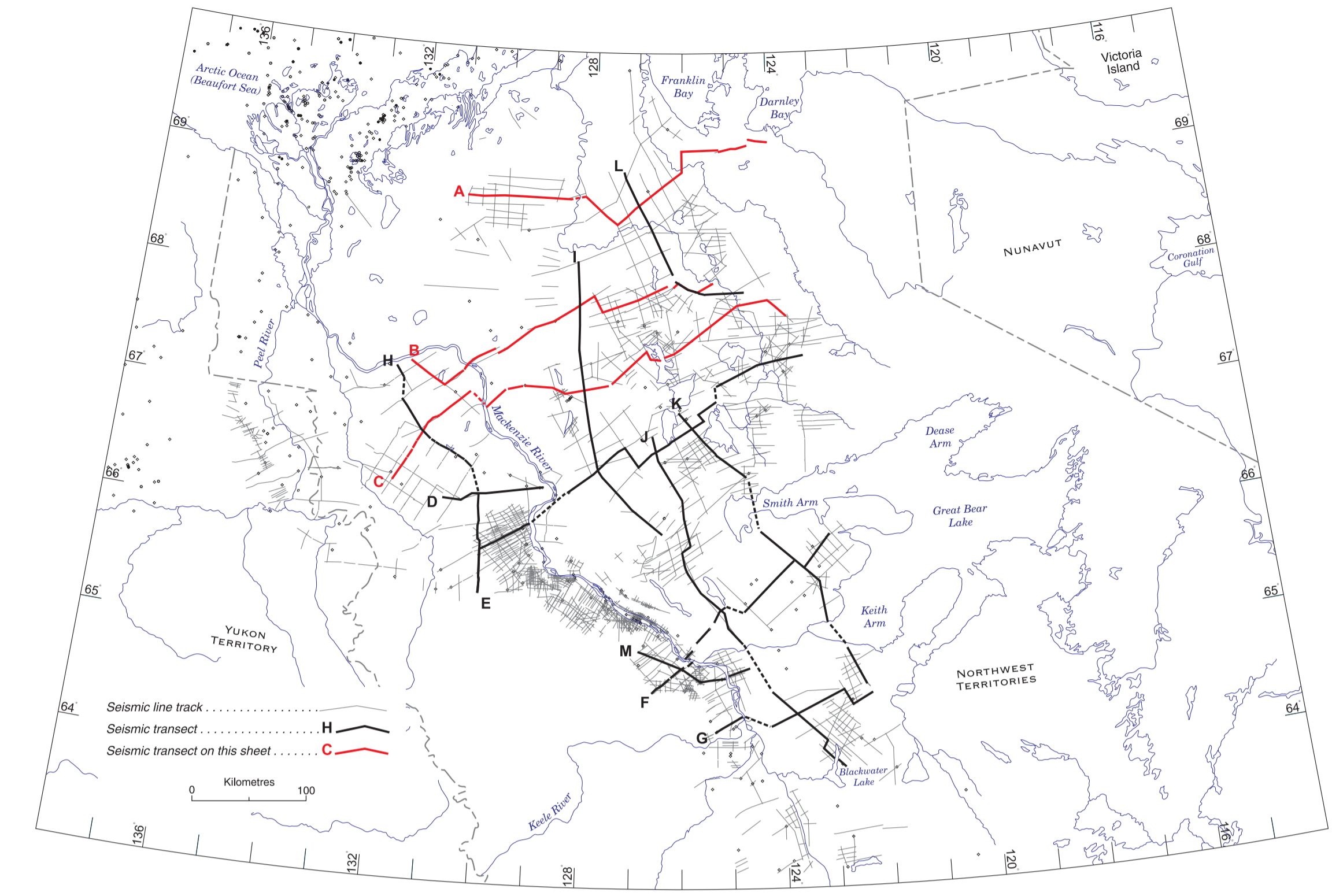
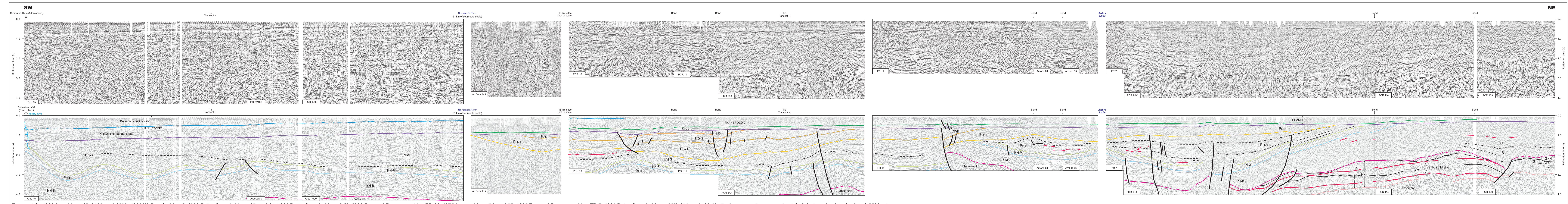
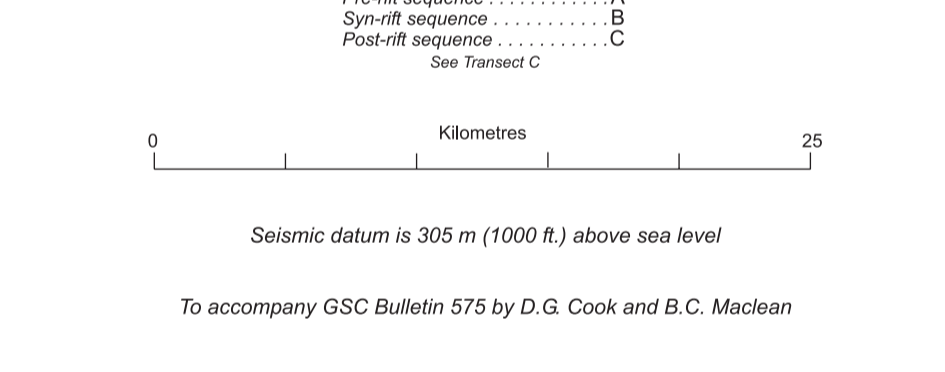


Transect A. 1973 Shell Canada Lines 1152 and 224; 1975 Mobil Lines I-11, I-7, I-18, and I-19; 1973 Gulf Canada Line 11; and 1972 Sigma Explorations Line 8. Vertical exaggeration approximately 2:1 at a seismic velocity of 5500 m/s



Transect B. 1960 Arco Lines 100, 400 and 1200; 1971 Mobil Line 4; 1975 Petro-Fina Line PF-1; 1972 Sigma Explorations Line GSI-02; 1984 Petro-Canada Lines 101X and 114X; 1975 HBOG Lines 1, 2 and 3. Vertical exaggeration approximately 2:1 at a seismic velocity of 5500 m/s

| UNIT | DESCRIPTION |
|---|--|
| DEVONIAN | DEV K IMPERIAL FORMATION Devonian clastic strata |
| | DEV D IMPERIAL FORMATION Devonian clastic strata |
| | DEV C IMPERIAL FORMATION Devonian clastic strata |
| | DEV B IMPERIAL FORMATION Devonian clastic strata |
| PALEOZOIC CARBONATE STRATA | PHS S PHANEROZOIC Top Saline River Fm. |
| | PHS M PHANEROZOIC Middle Saline River Fm. |
| | PHS L PHANEROZOIC Lower Saline River Fm. |
| | PHS B PHANEROZOIC Basal Saline River Fm. |
| PHANEROZOIC | PHS B PHANEROZOIC Basal Saline River Fm. |
| | PHS L PHANEROZOIC Lower Saline River Fm. |
| | PHS M PHANEROZOIC Middle Saline River Fm. |
| | PHS S PHANEROZOIC Top Saline River Fm. |
| | PHS B PHANEROZOIC Basal Saline River Fm. |
| | PHS L PHANEROZOIC Lower Saline River Fm. |
| | PHS M PHANEROZOIC Middle Saline River Fm. |
| | PHS S PHANEROZOIC Top Saline River Fm. |
| | PHS B PHANEROZOIC Basal Saline River Fm. |
| | PHS L PHANEROZOIC Lower Saline River Fm. |
| PHS M PHANEROZOIC Middle Saline River Fm. | |
| PHS S PHANEROZOIC Top Saline River Fm. | |
| BASAL | PHS B PHANEROZOIC Basal Saline River Fm. |
| | PHS L PHANEROZOIC Lower Saline River Fm. |
| BASEMENT | PHS B PHANEROZOIC Basal Saline River Fm. |
| | PHS L PHANEROZOIC Lower Saline River Fm. |



Transect C. 1961 Arco Lines 45, 2400, and 1000; 1960 W. Decalta Line 2; 1983 Petro-Canada Lines 10, and 11; 1984 Petro-Canada Lines 24X; 1983 Forward Resources Line FR-7; 1975 Amoco Lines 64, and 65; 1983 Forward Resources Line FR-7; 1984 Petro-Canada Lines 90X, 114, and 109. Vertical exaggeration approximately 2:1 at a seismic velocity of 5500 m/s