

LEGEND

PHANEROZOIC

PERMIAN-TRIASSIC

- P: Permo-Triassic basal and ground siltstone, sandstone, shale, and minor chert.

MESOPROTEROZOIC

- M: Mesoproterozoic dykes, quartz dykes, and minor intrusions.

PALEOPROTEROZOIC

- PP: Paleoproterozoic gneisses, schists, and migmatites.

ARCHAEOGEOLOGICAL

- Agd: Archean granitoid rocks.
- Abld: Archean basalts and andesites.
- Abtp: Archean tholeiitic basalts.
- Abtr: Archean rhyolites and trachytes.
- Abta: Archean andesites.

RECENT LAKE GROUP

- Abld: Recent lake group basalts and andesites.

BACK RIVER VOLCANIC COMPLEX

- Abld: Basalt and andesite.
- Abtp: Tholeiitic basalt.
- Abtr: Rhyolite and trachyte.
- Abta: Andesite.

FAULTS

- F: Fault lines.

BOUNDARY

- B: Geological boundary.

SYMBOLS

- Topographic contours.
- Water bodies.
- Settlements.

MINERALS

Gold	Au	Chalcophyllite	Cy	Pyrite	Pf
Silver	Ag	Galenite	Ga	Pyrite	Pf
Barite	ba	Magnetite	mc	Sphalerite	sp

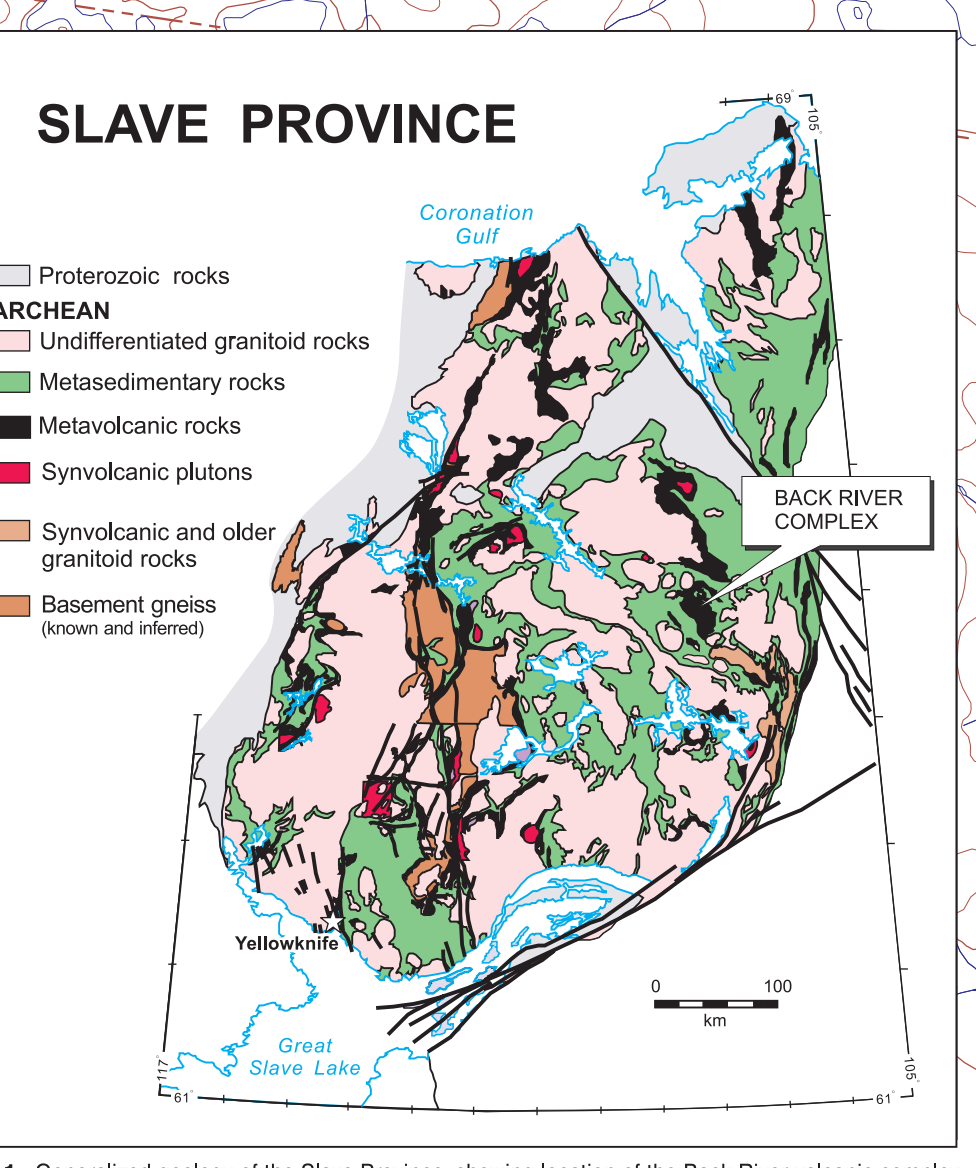


Figure 1. Generalized geology of the Slave Province, showing location of the Back River volcanic complex.



MAP 2014A GEOLOGY BACK RIVER VOLCANIC COMPLEX NUNAVUT-NORTHWEST TERRITORIES

Scale 1:500 000/Echelle 1:500 000

© Her Majesty the Queen in Right of Canada 2004

501	502	503
504	505	506
507	508	509
510	511	512

Author: M. B. Leveson
Editor: M. B. Leveson
Digitized by: J. A. V. Post, Earth Sciences Sector, Information Division (ES2) (H)

Geological Survey of Canada, Ottawa, Ontario