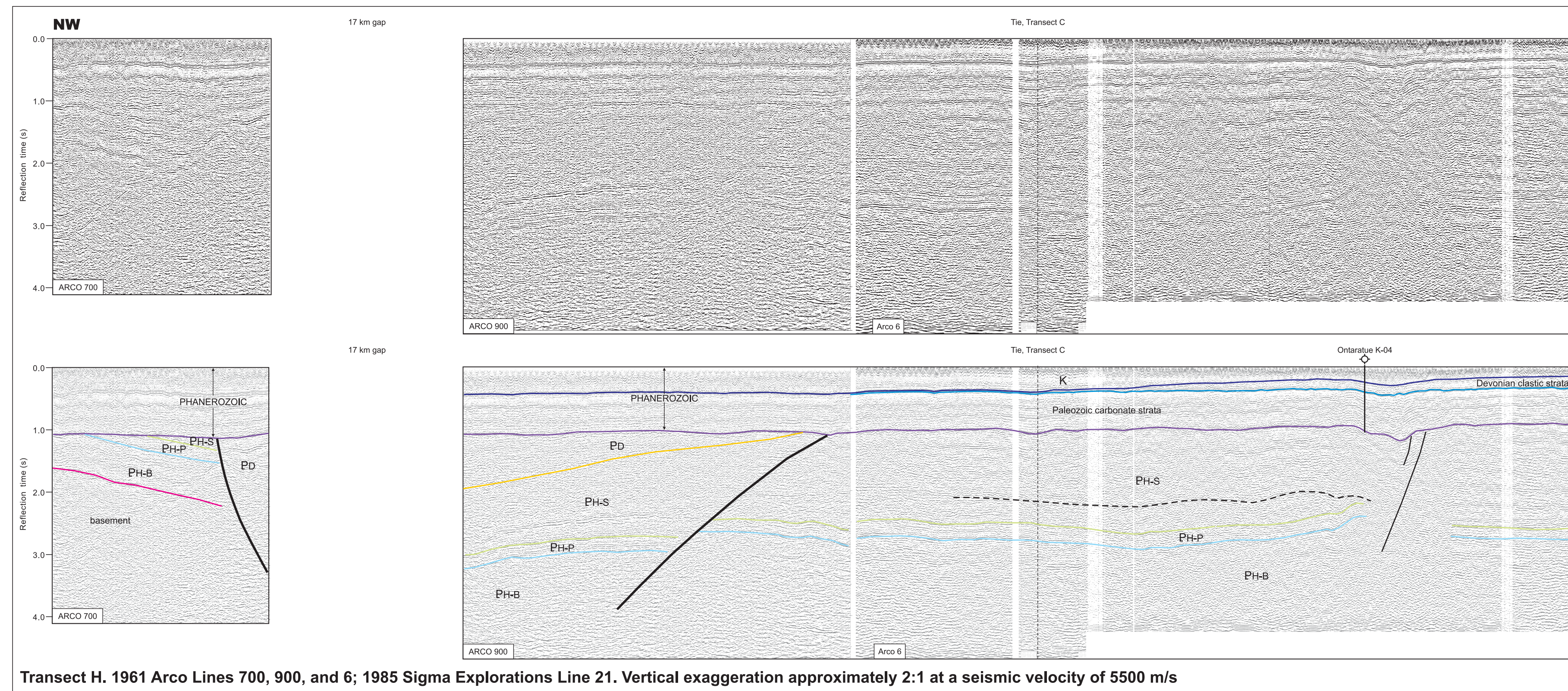
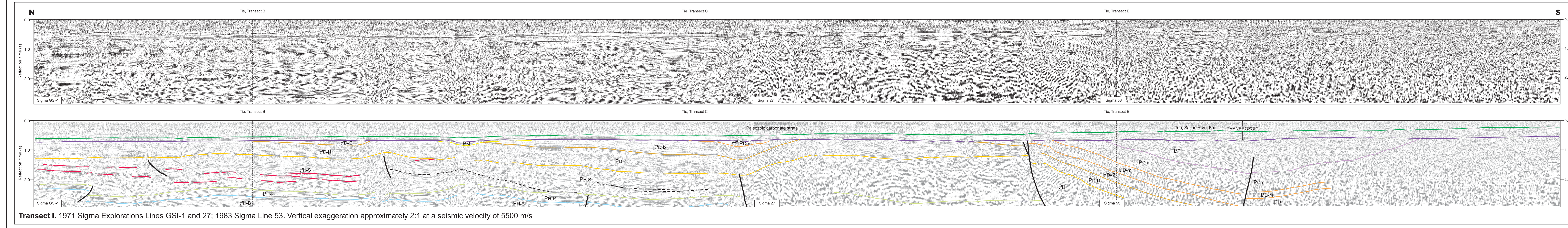
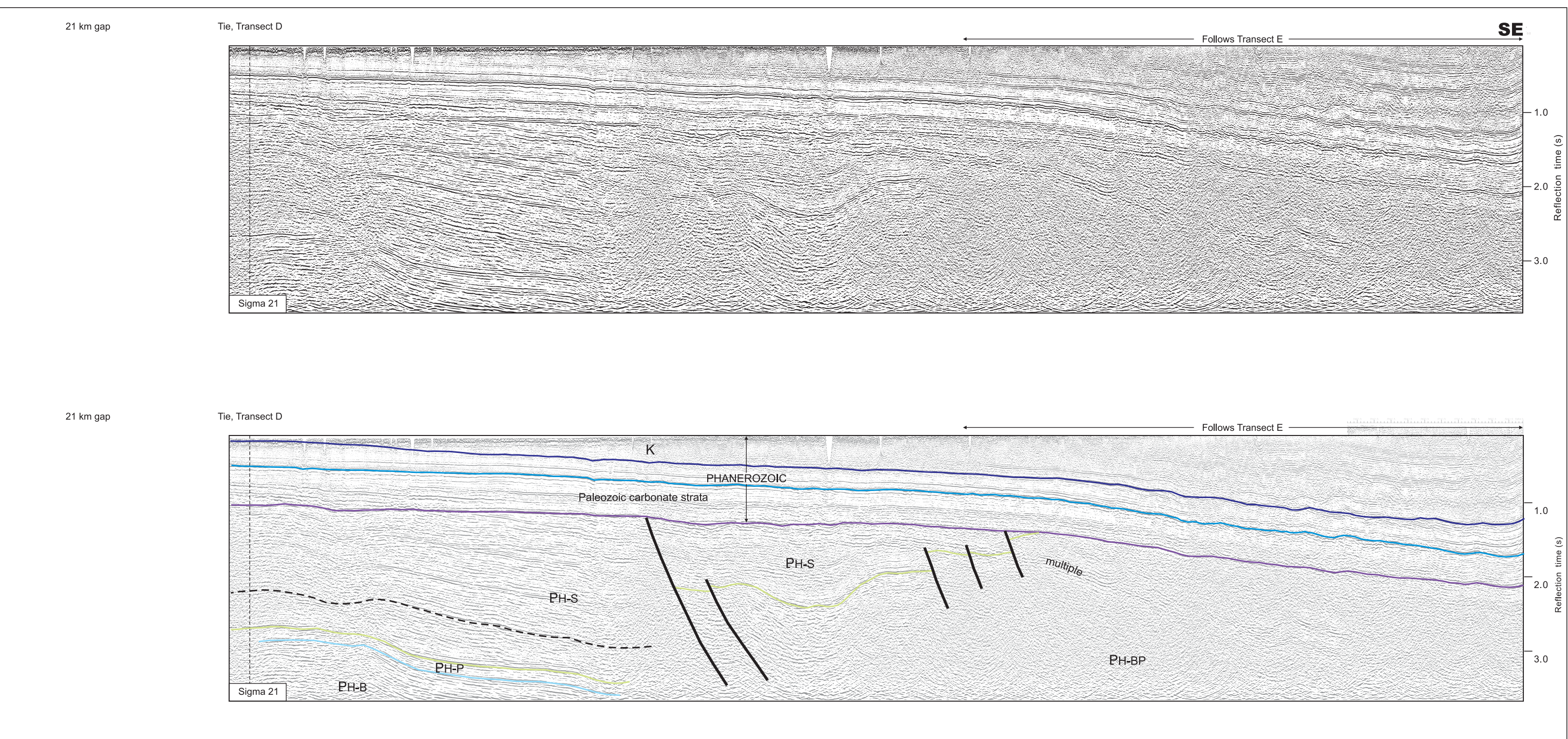


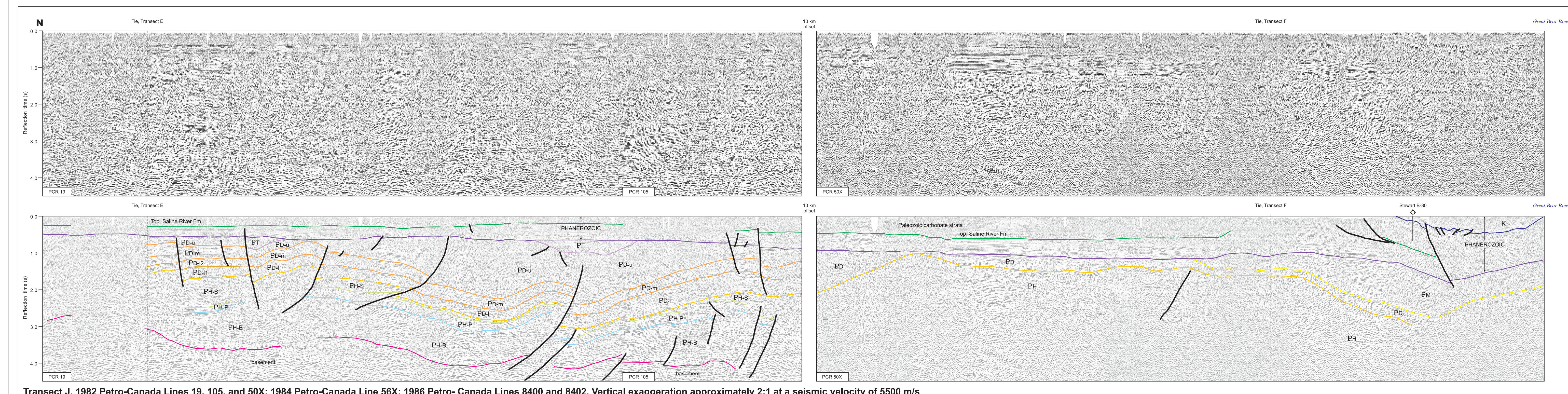
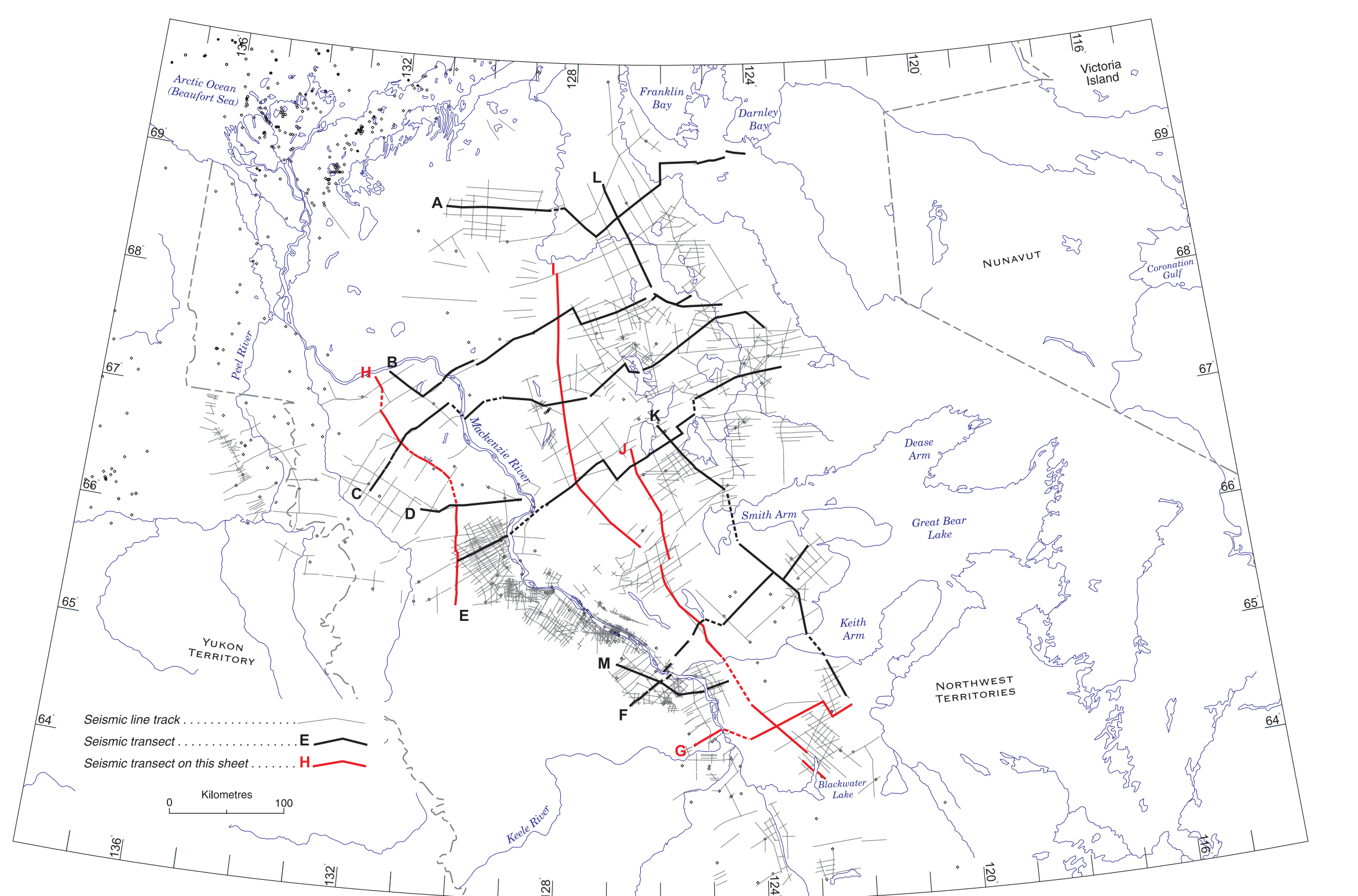
Transect G. 1992 Chevron Canada Resources Line 52X; 1984 Petro-Canada Lines 58X; 1985 Petro-Canada Line 8414; and 1984 Petro-Canada Line 60X. Vertical exaggeration approximately 2:1 at a seismic velocity of 5500 m/s



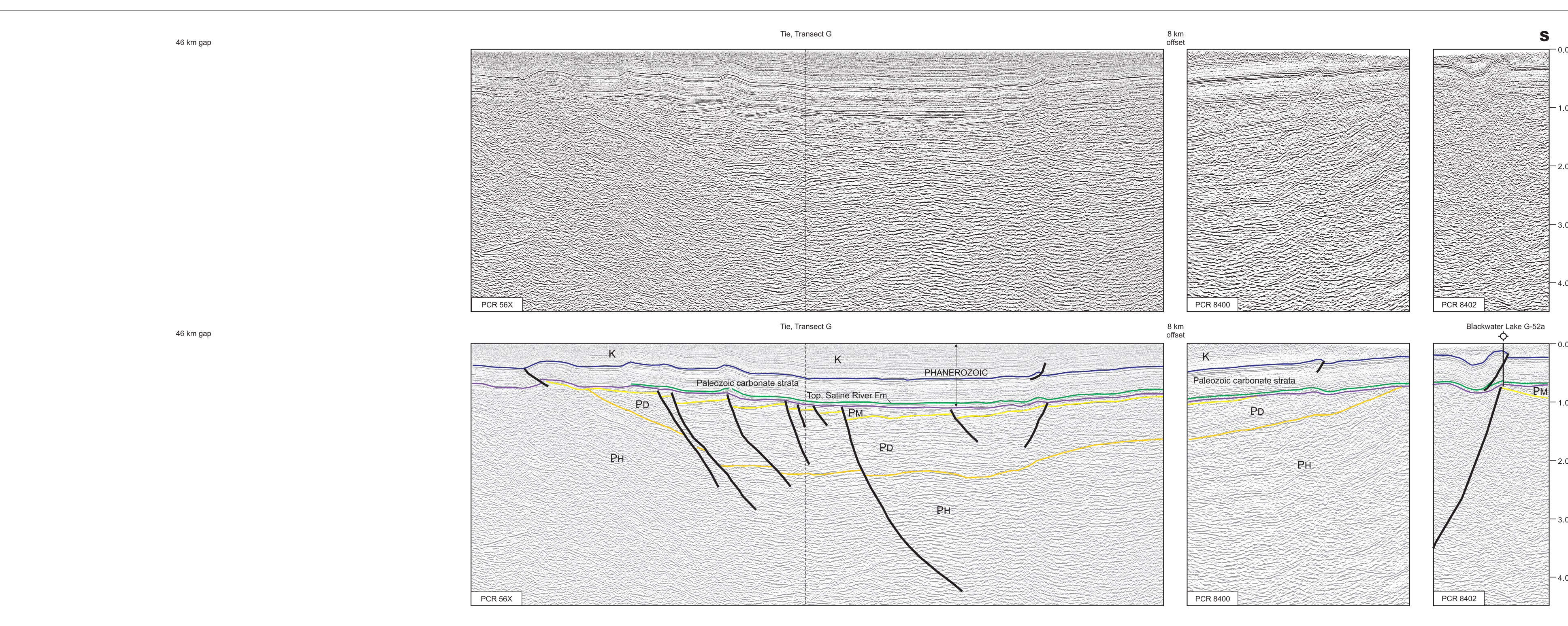
Transect H. 1961 Arco Lines 700, 900, and 6; 1985 Sigma Explorations Line 21. Vertical exaggeration approximately 2:1 at a seismic velocity of 5500 m/s



Transect I. 1971 Sigma Explorations Lines GSI-1 and 27; 1983 Sigma Line 53. Vertical exaggeration approximately 2:1 at a seismic velocity of 5500 m/s



Transect J. 1982 Petro-Canada Lines 19, 105, and 50X; 1984 Petro-Canada Line 56X; 1986 Petro-Canada Lines 8400 and 8402. Vertical exaggeration approximately 2:1 at a seismic velocity of 5500 m/s



Transect G. 1982 Petro-Canada Lines 19, 105, and 50X; 1984 Petro-Canada Line 56X; 1986 Petro-Canada Lines 8400 and 8402. Vertical exaggeration approximately 2:1 at a seismic velocity of 5500 m/s

Stratigraphic Unit	Description
CRETACEOUS	
K	DEVONIAN CLASTIC STRATA
PHANEROZOIC	
PH-S	Upper Member
PH-P	Platform Unit
PH-B	Basal Member
PROTEROZOIC	
D	DEVONIAN CLASTIC STRATA
PH-S	Upper Member
PH-P	Platform Unit
PH-B	Basal Member
Basement	Basement

Seismic datum is 305 m (1000 ft) above sea level
To accompany GSC Bulletin 575 by D.G. Cook and B.C. Medburn