

FECN07 CWIS 021800

THIRTY DAY FORECAST FOR EASTERN ARCTIC WATERS FOR NOVEMBER
ISSUED BY THE NORTH AMERICAN ICE SERVICE ON 02 NOVEMBER 2005.
THIS IS THE LAST 30 DAY FORECAST FOR THE 2005 SEASON.

During the second half of October, temperatures have been well above normal over the whole Eastern Arctic area. Freeze up is generally close to a week late except 10 days to two weeks late in Foxe Basin.

Forecast ice conditions for 02nd November to mid-November

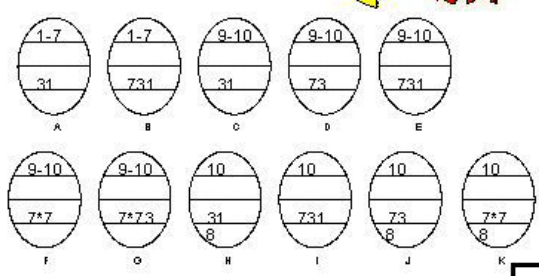
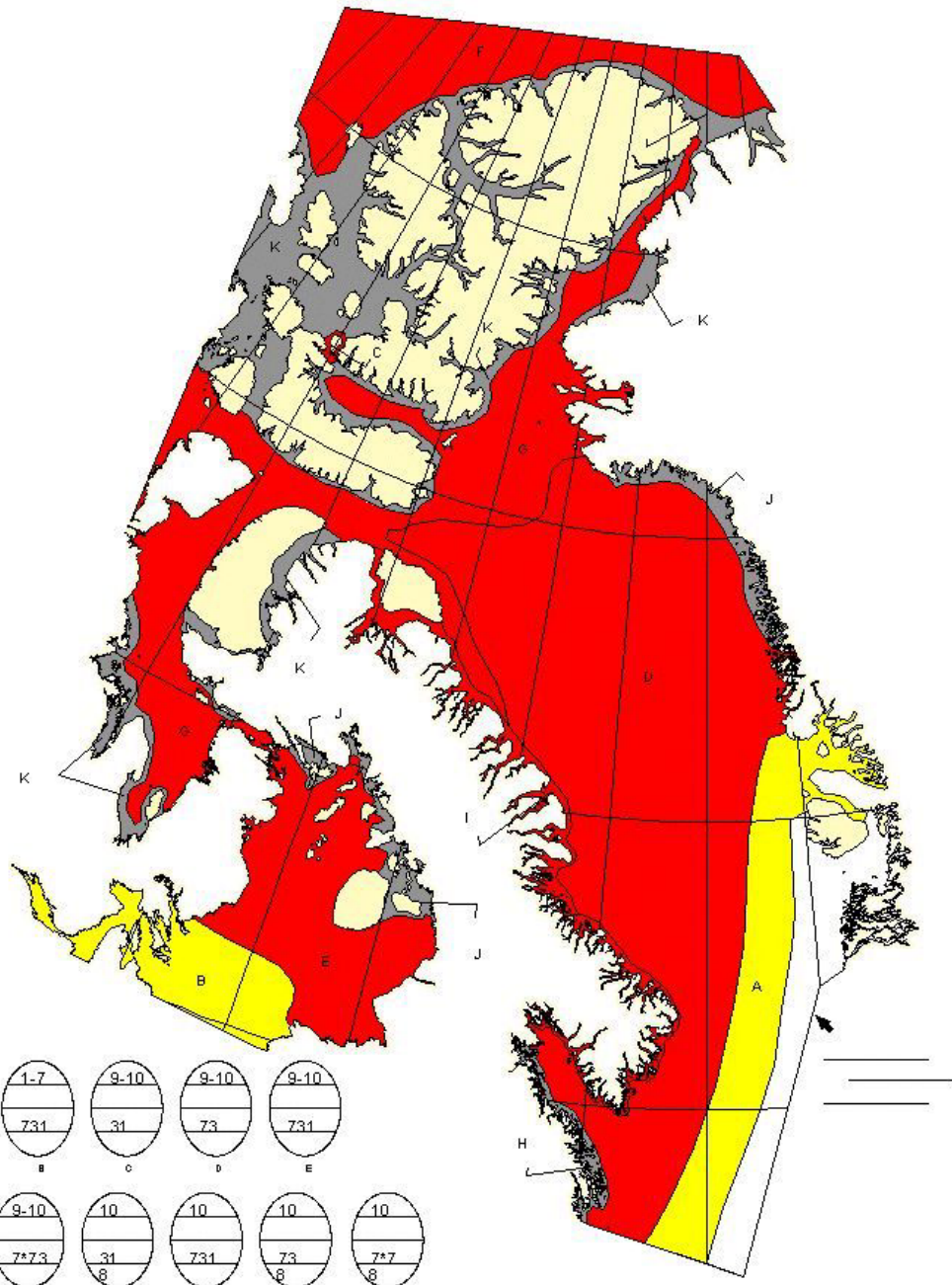
Above normal temperatures are generally expected over the forecast area except near normal over Baffin Bay. Ice will continue to develop along the Baffin Island coast down to Home Bay during the first week of November and down to the entrance to Cumberland Sound during the second week. At mid-November, grey and greywhite ice will predominate inside the main pack in Baffin Bay, except first year ice in the approach to Lancaster Sound. Ice will develop rapidly in Foxe Basin and at the end of the forecast period the northern half of the basin will be covered by greywhite ice. At that time open water will predominate in the southern half of the basin except for new and grey ice along the shore.

Forecast ice conditions mid-November to November 30th

Near to above normal temperatures are expected to prevail during the second half of November. Ice along the Baffin Island coast will continue its southward expansion and reach the entrance to Frobisher Bay during the last week of November. At the end of November greywhite ice will be predominant in the western half of Davis Strait while bergy water prevails in the eastern half northward to Disko Island. Ice will develop rapidly in the rest of Foxe Basin and at the end of the period greywhite ice will predominate in the southern half while first year ice prevails in the northern half.

END

Forecast ice conditions for 01 December 2005



COLOR CODES BASED ON TOTAL CONCENTRATION			
ICE FREE	4/5 TENTHS	FAST ICE (THICKNESS)	ICE 5-15'
LESS THAN 1/10 TH	7/8 TENTHS	ICE 15-20'	UNDEFINED ICE
1/3 TENTHS	9/10 TENTHS	ICE 20-30'	

**NORTH AMERICAN ICE SERVICE /
 SERVICE NORD-AMERICAIN DES GLACES
 ICE FORECAST - 30 DAY
 PREVISIONS DES GLACES - 30 JOURS
 VALID / VALIDE: 01 DEC 2005**