

**ICE ANALYSIS**  
**ANALYSE DE GLACE**

Approaches to Resolute  
Resolute et ses abords

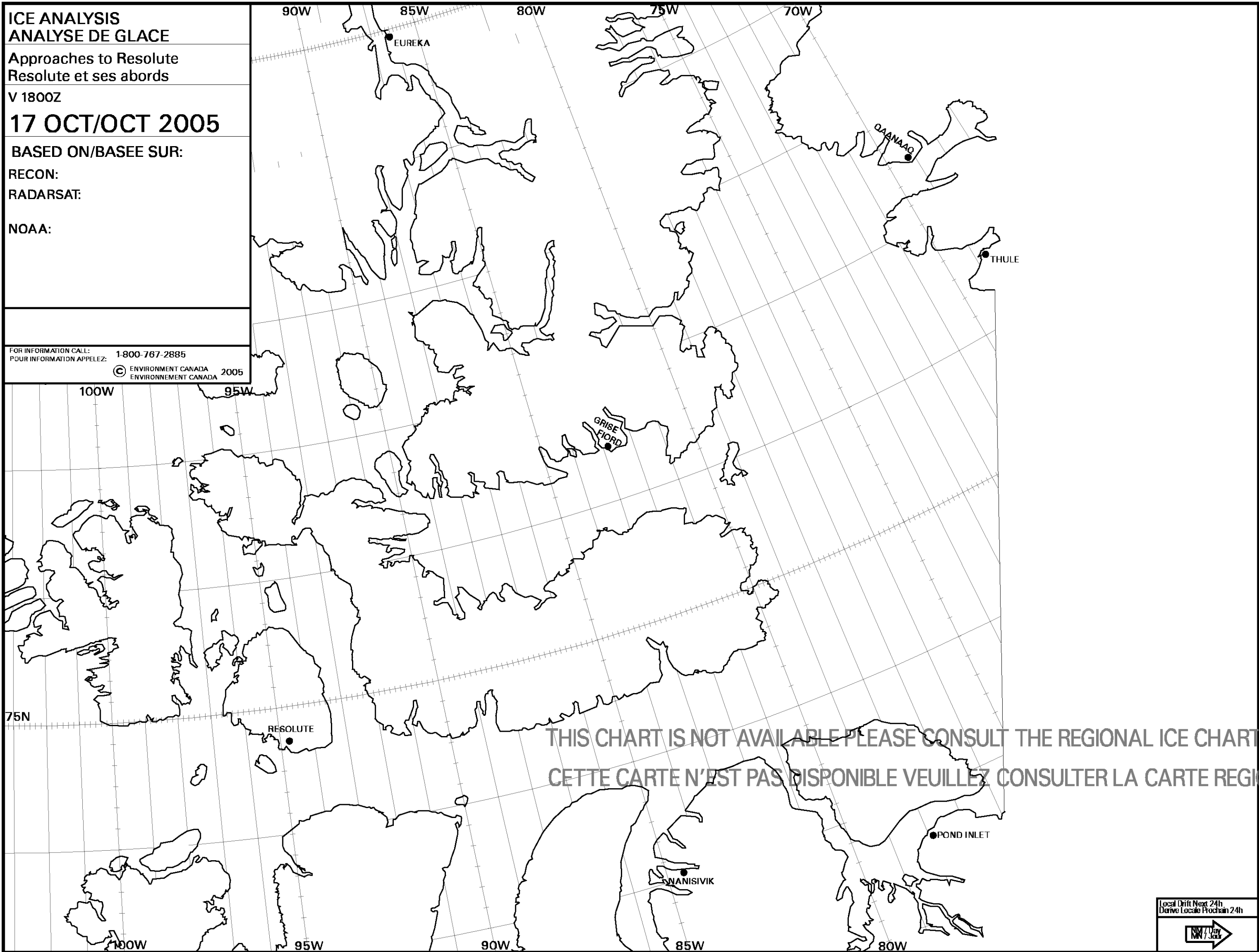
V 1800Z

**17 OCT/OCT 2005**

BASED ON/BASEE SUR:  
RECON:  
RADARSAT:  
NOAA:

FOR INFORMATION CALL: 1-800-767-2885  
POUR INFORMATION APPELEZ: 1-800-767-2885

© ENVIRONMENT CANADA 2005  
© ENVIRONNEMENT CANADA 2005



THIS CHART IS NOT AVAILABLE PLEASE CONSULT THE REGIONAL ICE CHART  
CETTE CARTE N'EST PAS DISPONIBLE VEUILLEZ CONSULTER LA CARTE REGIONALE

Local Drift Next 24h  
Derive Locale Prochain 24h