

160W 155W 150W 145W 140W 135W 130W 125W

THIS CHART IS NOT AVAILABLE PLEASE CONSULT THE REGIONAL ICE CHART  
CETTE CARTE N'EST PAS DISPONIBLE VEUILLEZ CONSULTER LA CARTE REGIONALE DES GLACES

75N

70N

155W

150W

70N

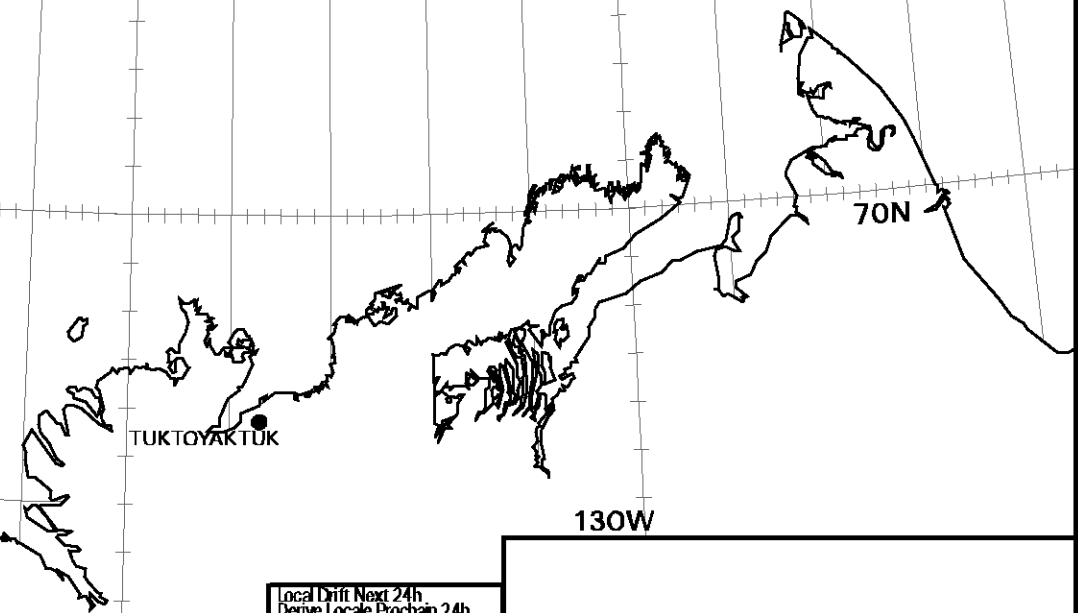
130W

145W

140W

135W

<b>ICE ANALYSIS</b> <b>ANALYSE DE GLACE</b>
Alaskan Coast Cote d'Alaska
V 1800Z
<b>06 OCT/OCT 2005</b>
BASED ON/BASEE SUR:
RECON:
RADARSAT:
NOAA:



TUKTOYARTUK

INUVIK

Local Drift Next 24h  
Derive Locale Prochain 24h



FOR INFORMATION CALL: 1-800-767-2885  
POUR INFORMATION APPELEZ: 1-800-767-2885  
© ENVIRONMENT CANADA 2005  
© ENVIRONNEMENT CANADA 2005