

**Transportation Safety Board of Canada**

**Table 1  
Railway Occurrence and Casualty Statistics for October 2005**

	October			Year To Date		
	2005	2004	2000-2004 Average	2005	2004	2000-2004 Average
<b>Accidents</b>						
Main-Track Train Collisions	0	0	0	3	5	7
Main-Track Train Derailments	12	5	8	168	123	113
Crossings	22	17	23	218	196	212
Non-Main-Track Train Collisions	7	14	7	76	105	90
Non-Main-Track Train Derailments	44	38	35	471	382	329
Collisions/Derailments Involving Track Units	3	2	1	18	24	16
Employee/Passenger	0	1	1	6	8	7
Trespassers	10	10	8	76	83	67
Fires/Explosions	2	1	2	17	13	24
Other	0	3	4	13	20	22
<b>Total</b>	<b>100</b>	<b>91</b>	<b>90</b>	<b>1,066</b>	<b>959</b>	<b>887</b>
<b>Incidents</b>						
Dangerous Goods Leaker	14	14	15	112	113	144
Main-track Switch in Abnormal Position	1	3	1	9	9	10
Movement Exceeds Limits of Authority	7	7	10	79	80	81
Runaway Rolling Stock	2	1	1	14	9	9
Others	0	1	1	3	7	11
<b>Total</b>	<b>24</b>	<b>26</b>	<b>28</b>	<b>217</b>	<b>218</b>	<b>255</b>
Million Train-miles*				79.20	76.00	75.10
Accidents/Million Train-miles				13.46	12.62	11.81
<b>Accidents Involving Dangerous Goods</b>						
Main-track Train Derailments	4	0	2	33	28	25
Crossings	3	1	1	12	8	7
Non-Main-Track Train Collisions	3	7	3	39	43	37
Non-Main-Track Train Derailments	9	4	10	93	87	107
All Others	1	0	1	9	8	9
<b>Total</b>	<b>20</b>	<b>12</b>	<b>16</b>	<b>186</b>	<b>174</b>	<b>184</b>
<b>Accidents with a DG Release</b>	0	0	0	6	5	5
<b>Accidents Involving Passenger Trains</b>	6	6	6	73	68	58
<b>Fatalities</b>						
Crossings	4	5	3	33	19	28
Trespassers	10	7	6	60	59	46
All Others	0	1	0	1	5	3
<b>Total</b>	<b>14</b>	<b>13</b>	<b>9</b>	<b>94</b>	<b>83</b>	<b>77</b>
<b>Serious Injuries</b>						
Crossings	1	2	3	43	41	37
Trespassers	0	4	2	15	26	20
All Others	0	1	1	4	8	11
<b>Total</b>	<b>1</b>	<b>7</b>	<b>6</b>	<b>62</b>	<b>75</b>	<b>68</b>

\* Train-miles estimated. (Source: Transport Canada)

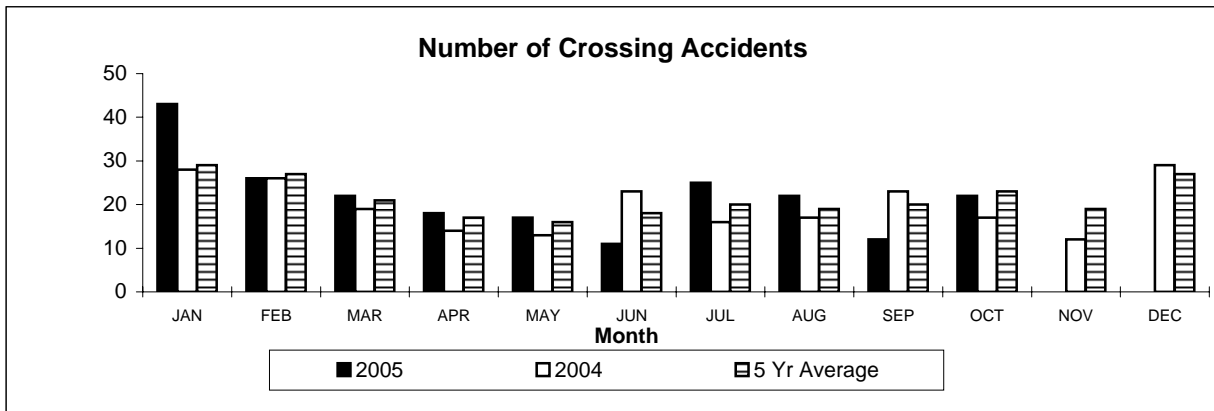
Figures are preliminary as of November 9th, 2005

All 5-year averages have been rounded. The totals sometimes do not coincide to the sum of these averages.

Transportation Safety Board of Canada

**Table 2  
Railway Crossing and Trespasser Accidents for October 2005**

Province		2005 Year To Date				Crossing		Trespasser	
		Public Crossings (by Protection Type)		Private	Farm	Total To Date		Year To Date	
		Automated	Passive	Crossings	Crossings	2005	2004	2005	2004
<b>NFL</b>	Accidents	0	0	0	0	0	0	1	
	Fatalities	0	0	0	0	0	0	0	
	Serious Injuries	0	0	0	0	0	0	1	
<b>NS</b>	Accidents	3	1	0	0	4	1	1	2
	Fatalities	0	0	0	0	0	0	0	1
	Serious Injuries	2	0	0	0	2	0	1	1
<b>NB</b>	Accidents	1	1	1	0	3	2	2	0
	Fatalities	1	0	0	0	1	0	1	0
	Serious Injuries	0	0	0	0	0	2	1	0
<b>QUE</b>	Accidents	37	4	7	2	50	52	13	13
	Fatalities	5	0	1	0	6	7	11	9
	Serious Injuries	9	1	1	0	11	12	2	4
<b>ONT</b>	Accidents	42	18	8	2	70	58	41	39
	Fatalities	11	1	0	1	13	8	33	28
	Serious Injuries	9	1	2	0	12	8	7	11
<b>MAN</b>	Accidents	11	2	2	0	15	17	5	2
	Fatalities	2	0	0	0	2	1	4	2
	Serious Injuries	1	0	0	0	1	6	1	0
<b>SAS</b>	Accidents	6	10	0	0	16	13	0	3
	Fatalities	1	1	0	0	2	1	0	4
	Serious Injuries	1	2	0	0	3	2	0	0
<b>ALT</b>	Accidents	25	16	4	0	45	28	5	12
	Fatalities	4	1	1	0	6	2	4	9
	Serious Injuries	8	2	1	0	11	8	1	3
<b>BC</b>	Accidents	8	2	4	0	14	23	9	11
	Fatalities	1	0	2	0	3	0	7	6
	Serious Injuries	2	0	1	0	3	3	2	6
<b>NWT</b>	Accidents	0	1	0	0	1	2	0	0
	Fatalities	0	0	0	0	0	0	0	0
	Serious Injuries	0	0	0	0	0	0	0	0
<b>CAN</b>	Accidents	133	55	26	4	218	196	76	83
	Fatalities	25	3	4	1	33	19	60	59
	Serious Injuries	32	6	5	0	43	41	15	26



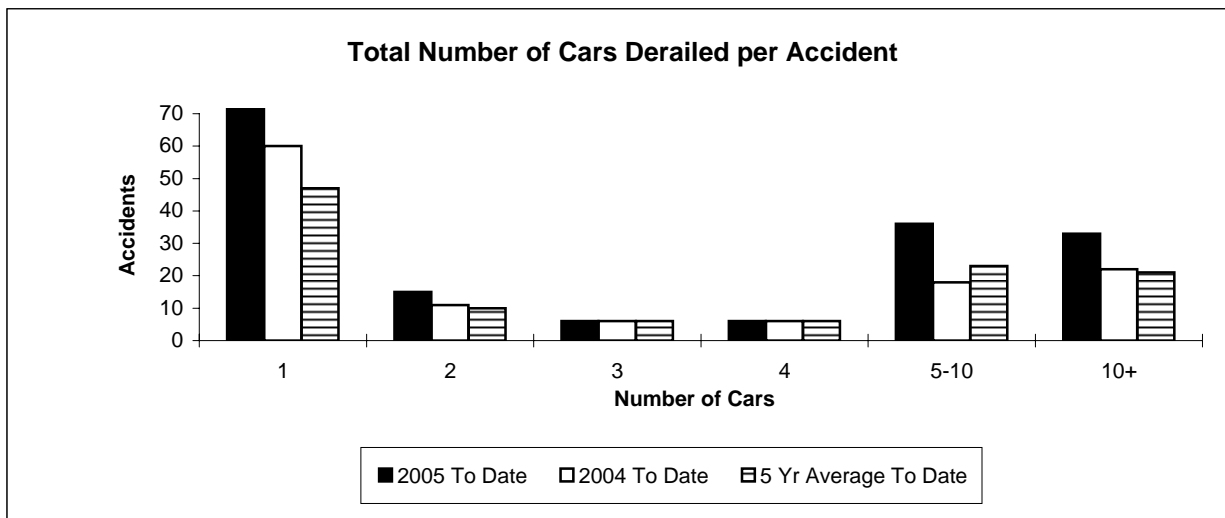
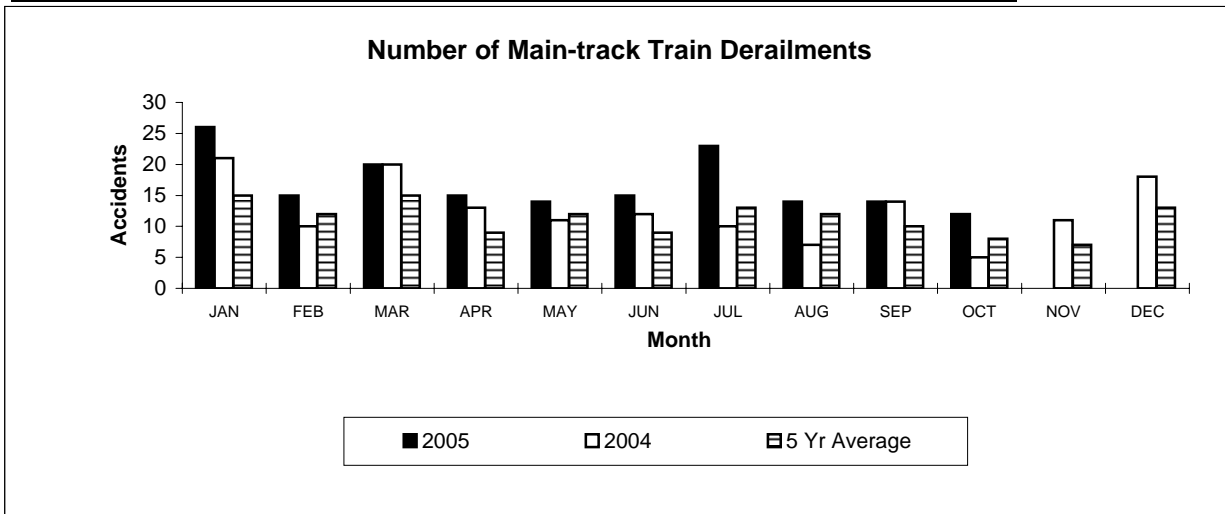
Figures are preliminary as of November 9th, 2005

**Table 3**

**Main-Track Train Derailments  
October 2005**

Province	Total Accidents		Accidents with DG Involvement	
	2005 To Date	2004 To Date	2005 To Date	2004 To Date
Newfoundland	1	0	0	0
Nova Scotia	0	1	0	0
New Brunswick	3	3	2	2
Quebec	24	17	2	4
Ontario	50	40	11	12
Manitoba	9	8	2	0
Saskatchewan	18	10	1	2
Alberta	26	18	9	7
British Columbia	37	26	6	1
Northwest Territories	0	0	0	0
<b>Canada</b>	<b>168</b>	<b>123</b>	<b>33</b>	<b>28</b>

\*There were three occurrences with dangerous goods release to date in 2005 and one in 2004.



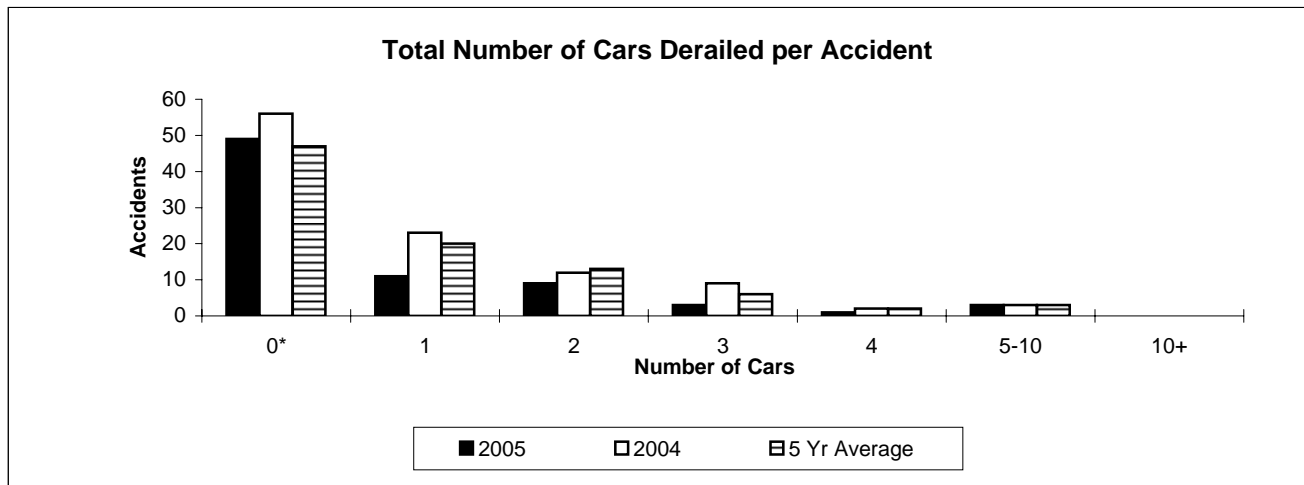
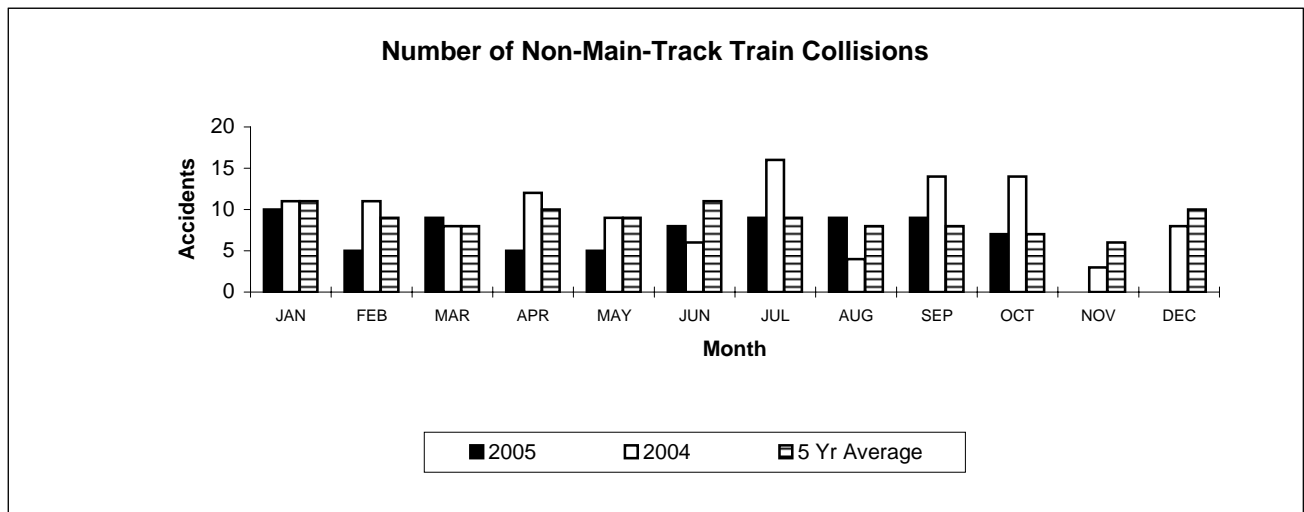
Figures are preliminary as of November 9th, 2005

**Table 4**

**Non-Main-Track Train Collisions  
October 2005**

Province	Total Accidents		Accidents with DG Involvement	
	2005 To Date	2004 To Date	2005 to Date	2004 To Date
Newfoundland	0	0	0	0
Nova Scotia	0	0	0	0
New Brunswick	1	1	1	1
Quebec	11	17	3	8
Ontario	23	26	14	8
Manitoba	9	9	6	3
Saskatchewan	5	4	0	0
Alberta	15	32	9	18
British Columbia	12	16	6	5
Northwest Territories	0	0	0	0
<b>Canada</b>	<b>76</b>	<b>105</b>	<b>39</b>	<b>43</b>

\*There were no occurrences with dangerous goods release to date in 2005 and two in 2004 .



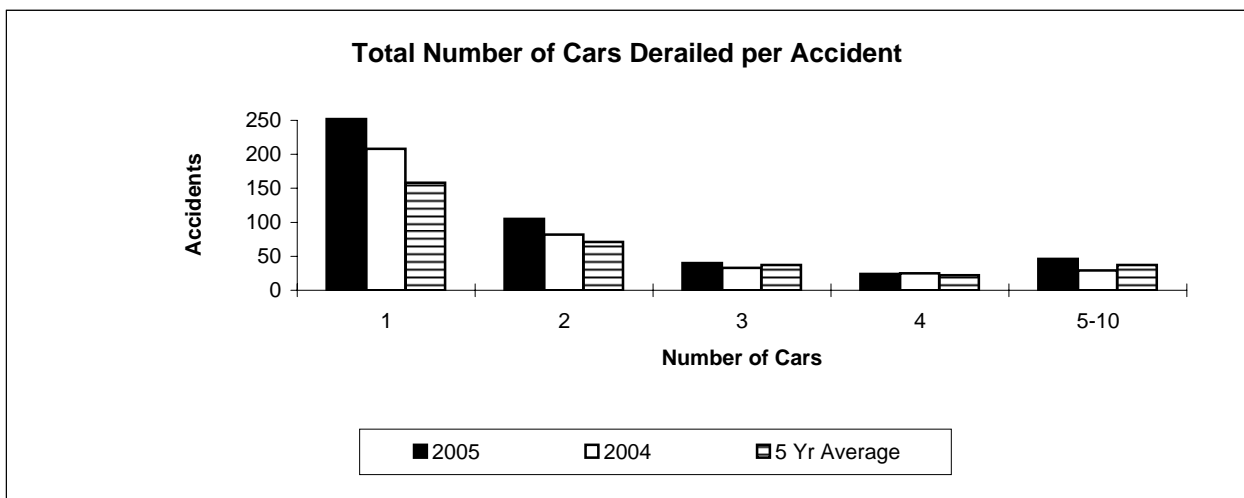
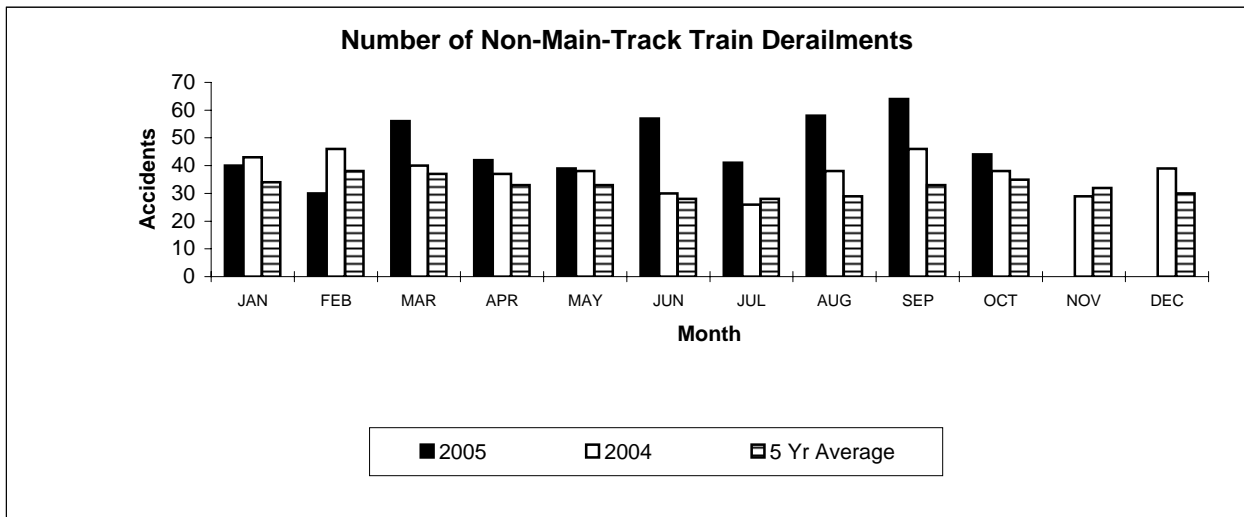
\*Number of collisions with no derailments.  
Figures are preliminary as of November 9th, 2005

**Table 5**

**Non-Main-Track Train Derailments  
October 2005**

Province	Total Accidents		Accidents with DG Involvement	
	2005 To Date	2004 To Date	2005 To Date	2004 To Date
Newfoundland	0	0	0	0
Nova Scotia	4	9	1	1
New Brunswick	14	12	6	5
Quebec	80	60	25	14
Ontario	132	137	19	30
Manitoba	34	28	10	10
Saskatchewan	42	23	3	2
Alberta	108	72	19	17
British Columbia	56	41	9	8
Northwest Territories	1	0	1	0
<b>Canada</b>	<b>471</b>	<b>382</b>	<b>93</b>	<b>87</b>

\*There was one occurrence with dangerous goods release in 2005 and one in 2004 to date.



Figures are preliminary as of November 9th, 2005