

Transportation Safety Board of Canada

**Table 1
Railway Occurrence and Casualty Statistics for November 2005**

| | November | | | Year To Date | | |
|--|-----------|-----------|----------------------|--------------|--------------|----------------------|
| | 2005 | 2004 | 2000-2004 Average | 2005 | 2004 | 2000-2004 Average |
| Accidents | | | | | | |
| Main-Track Train Collisions | 2 | 0 | 0 | 5 | 5 | 7 |
| Main-Track Train Derailments | 13 | 11 | 7 | 180 | 134 | 120 |
| Crossings | 25 | 12 | 19 | 243 | 208 | 231 |
| Non-Main-Track Train Collisions | 11 | 3 | 6 | 87 | 108 | 96 |
| Non-Main-Track Train Derailments | 29 | 29 | 32 | 502 | 411 | 362 |
| Collisions/Derailments Involving Track Units | 1 | 0 | 1 | 19 | 24 | 17 |
| Employee/Passenger | 1 | 2 | 1 | 7 | 10 | 8 |
| Trespassers | 5 | 10 | 7 | 81 | 93 | 73 |
| Fires/Explosions | 0 | 1 | 1 | 17 | 14 | 25 |
| Other | 2 | 1 | 2 | 15 | 21 | 24 |
| Total | 89 | 69 | 76 | 1,156 | 1,028 | 963 |
| Incidents | | | | | | |
| Dangerous Goods Leaker | 5 | 12 | 10 | 117 | 125 | 153 |
| Main-track Switch in Abnormal Position | 1 | 3 | 2 | 10 | 12 | 11 |
| Movement Exceeds Limits of Authority | 7 | 5 | 9 | 86 | 85 | 90 |
| Runaway Rolling Stock | 2 | 1 | 2 | 16 | 10 | 11 |
| Others | 2 | 1 | 2 | 5 | 8 | 13 |
| Total | 17 | 22 | 24 | 234 | 240 | 279 |
| Million Train-miles* | | | | 87.40 | 83.80 | 82.80 |
| Accidents/Million Train-miles | | | | 13.23 | 12.27 | 11.63 |
| Accidents Involving Dangerous Goods | | | | | | |
| Main-track Train Derailments | 1 | 5 | 2 | 32 | 33 | 27 |
| Crossings | 2 | 1 | 1 | 14 | 9 | 7 |
| Non-Main-Track Train Collisions | 3 | 0 | 2 | 42 | 43 | 39 |
| Non-Main-Track Train Derailments | 8 | 7 | 13 | 101 | 94 | 120 |
| All Others | 0 | 0 | 1 | 9 | 8 | 9 |
| Total | 14 | 13 | 18 | 198 | 187 | 203 |
| Accidents with a DG Release | 0 | 0 | 0 | 7 | 5 | 5 |
| Accidents Involving Passenger Trains | 6 | 2 | 4 | 79 | 70 | 62 |
| Fatalities | | | | | | |
| Crossings | 5 | 1 | 3 | 38 | 20 | 31 |
| Trespassers | 4 | 5 | 4 | 64 | 64 | 50 |
| All Others | 0 | 1 | 0 | 1 | 6 | 3 |
| Total | 9 | 7 | 7 | 103 | 90 | 84 |
| Serious Injuries | | | | | | |
| Crossings | 4 | 1 | 3 | 47 | 42 | 40 |
| Trespassers | 1 | 5 | 3 | 16 | 31 | 22 |
| All Others | 1 | 2 | 1 | 5 | 10 | 12 |
| Total | 6 | 8 | 7 | 68 | 83 | 74 |

* Train-miles estimated. (Source: Transport Canada)

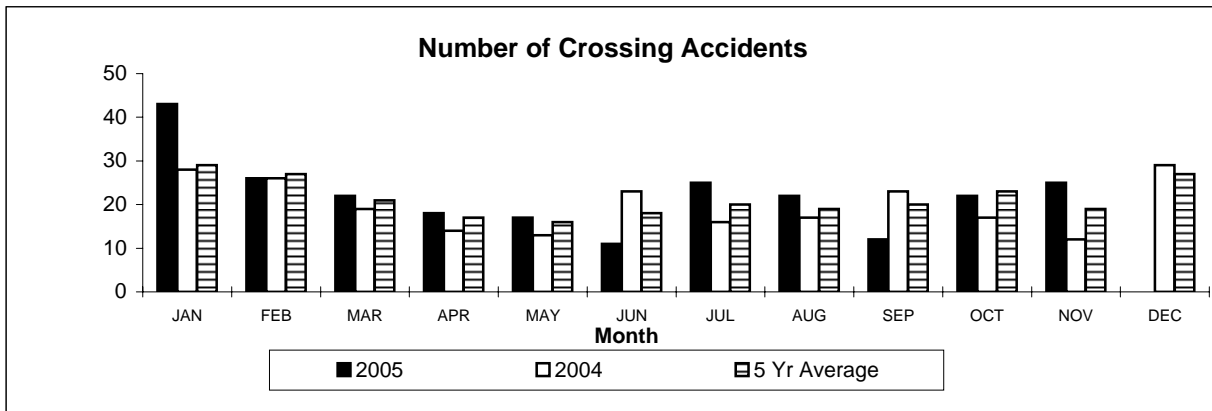
Figures are preliminary as of December 12th, 2005

All 5-year averages have been rounded. The totals sometimes do not coincide to the sum of these averages.

Transportation Safety Board of Canada

**Table 2
Railway Crossing and Trespasser Accidents for November 2005**

| Province | | 2005 Year To Date | | | | Crossing | | Trespasser | |
|------------|------------------|--|---------|-----------|-----------|---------------|------|--------------|------|
| | | Public Crossings (by Protection Type) | | Private | Farm | Total To Date | | Year To Date | |
| | | Automated | Passive | Crossings | Crossings | 2005 | 2004 | 2005 | 2004 |
| NFL | Accidents | 0 | 0 | 0 | 0 | 0 | 0 | 1 | |
| | Fatalities | 0 | 0 | 0 | 0 | 0 | 0 | 0 | |
| | Serious Injuries | 0 | 0 | 0 | 0 | 0 | 0 | 1 | |
| NS | Accidents | 3 | 1 | 0 | 0 | 4 | 2 | 2 | |
| | Fatalities | 0 | 0 | 0 | 0 | 0 | 0 | 1 | |
| | Serious Injuries | 2 | 0 | 0 | 0 | 2 | 0 | 1 | |
| NB | Accidents | 1 | 1 | 1 | 0 | 3 | 2 | 2 | |
| | Fatalities | 1 | 0 | 0 | 0 | 1 | 0 | 1 | |
| | Serious Injuries | 0 | 0 | 0 | 0 | 0 | 2 | 1 | |
| QUE | Accidents | 37 | 6 | 7 | 2 | 52 | 55 | 14 | |
| | Fatalities | 5 | 1 | 1 | 0 | 7 | 7 | 12 | |
| | Serious Injuries | 9 | 1 | 1 | 0 | 11 | 12 | 2 | |
| ONT | Accidents | 51 | 20 | 8 | 2 | 81 | 59 | 43 | |
| | Fatalities | 12 | 3 | 0 | 1 | 16 | 9 | 34 | |
| | Serious Injuries | 10 | 3 | 2 | 0 | 15 | 8 | 8 | |
| MAN | Accidents | 12 | 2 | 2 | 0 | 16 | 18 | 5 | |
| | Fatalities | 2 | 0 | 0 | 0 | 2 | 1 | 4 | |
| | Serious Injuries | 1 | 0 | 0 | 0 | 1 | 6 | 1 | |
| SAS | Accidents | 6 | 10 | 0 | 1 | 17 | 14 | 0 | |
| | Fatalities | 1 | 1 | 0 | 0 | 2 | 1 | 0 | |
| | Serious Injuries | 1 | 2 | 0 | 1 | 4 | 2 | 0 | |
| ALT | Accidents | 25 | 20 | 6 | 0 | 51 | 31 | 5 | |
| | Fatalities | 4 | 2 | 1 | 0 | 7 | 2 | 4 | |
| | Serious Injuries | 8 | 2 | 1 | 0 | 11 | 8 | 1 | |
| BC | Accidents | 9 | 3 | 6 | 0 | 18 | 25 | 10 | |
| | Fatalities | 1 | 0 | 2 | 0 | 3 | 0 | 8 | |
| | Serious Injuries | 2 | 0 | 1 | 0 | 3 | 4 | 2 | |
| NWT | Accidents | 0 | 1 | 0 | 0 | 1 | 2 | 0 | |
| | Fatalities | 0 | 0 | 0 | 0 | 0 | 0 | 0 | |
| | Serious Injuries | 0 | 0 | 0 | 0 | 0 | 0 | 0 | |
| CAN | Accidents | 144 | 64 | 30 | 5 | 243 | 208 | 81 | |
| | Fatalities | 26 | 7 | 4 | 1 | 38 | 20 | 64 | |
| | Serious Injuries | 33 | 8 | 5 | 1 | 47 | 42 | 16 | |



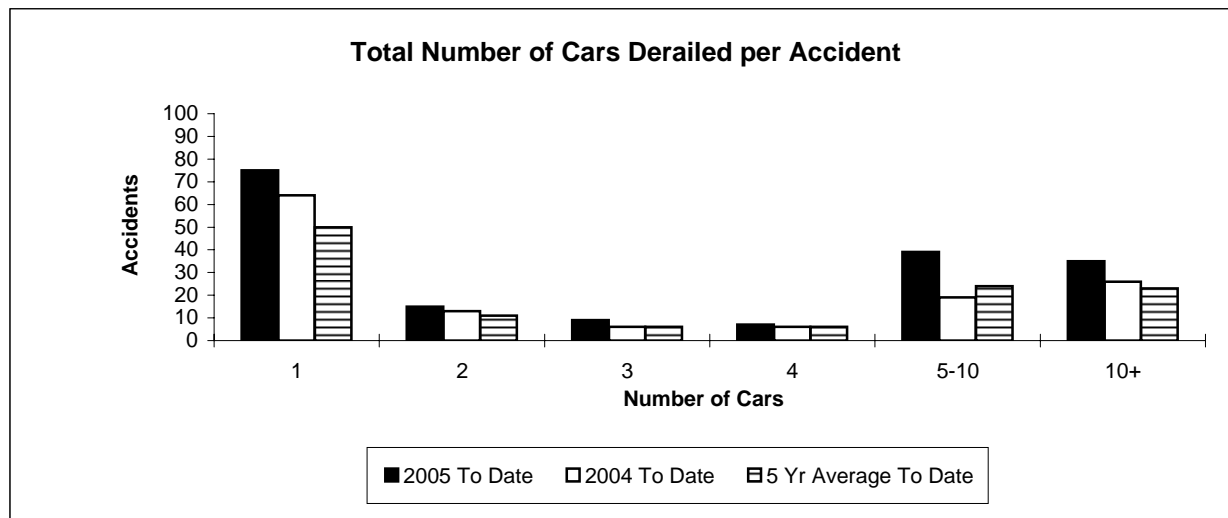
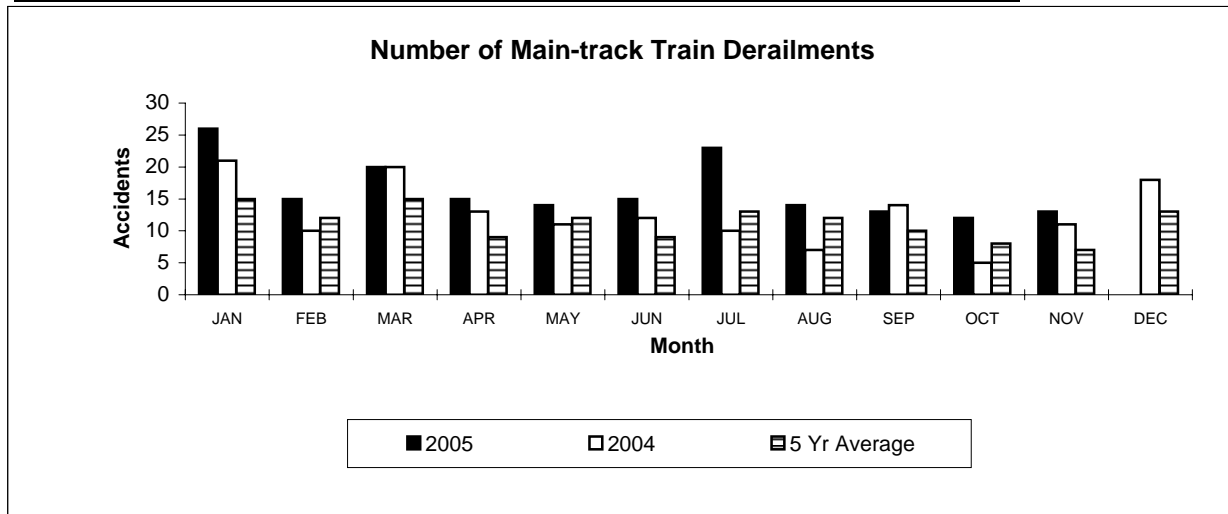
Figures are preliminary as of December 12th, 2005

Table 3

**Main-Track Train Derailments
November 2005**

| Province | Total Accidents | | Accidents with DG Involvement | |
|-----------------------|-----------------|--------------|-------------------------------|--------------|
| | 2005 To Date | 2004 To Date | 2005 To Date | 2004 To Date |
| Newfoundland | 1 | 0 | 0 | 0 |
| Nova Scotia | 0 | 1 | 0 | 0 |
| New Brunswick | 3 | 3 | 2 | 2 |
| Quebec | 25 | 19 | 2 | 6 |
| Ontario | 54 | 43 | 12 | 13 |
| Manitoba | 10 | 9 | 2 | 0 |
| Saskatchewan | 20 | 11 | 1 | 2 |
| Alberta | 29 | 20 | 8 | 9 |
| British Columbia | 38 | 28 | 5 | 1 |
| Northwest Territories | 0 | 0 | 0 | 0 |
| Canada | 180 | 134 | 32 | 33 |

*There were four occurrences with dangerous goods release to date in 2005 and one in 2004.



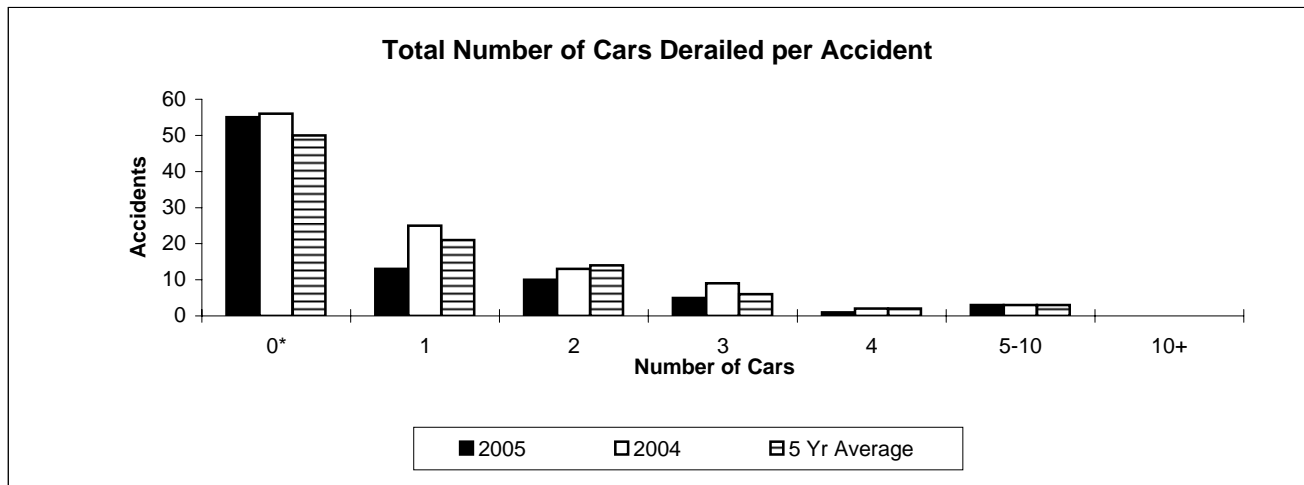
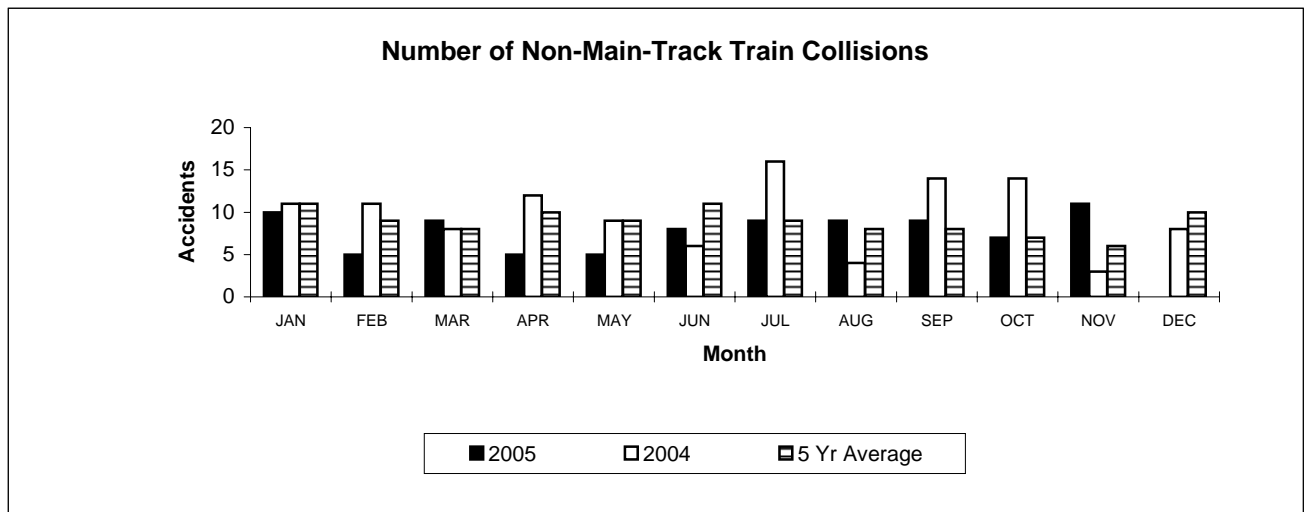
Figures are preliminary as of December 12th, 2005

Table 4

**Non-Main-Track Train Collisions
November 2005**

| Province | Total Accidents | | Accidents with DG Involvement | |
|-----------------------|-----------------|--------------|-------------------------------|--------------|
| | 2005 To Date | 2004 To Date | 2005 to Date | 2004 To Date |
| Newfoundland | 0 | 0 | 0 | 0 |
| Nova Scotia | 0 | 0 | 0 | 0 |
| New Brunswick | 1 | 1 | 1 | 1 |
| Quebec | 13 | 18 | 3 | 8 |
| Ontario | 25 | 26 | 15 | 8 |
| Manitoba | 11 | 10 | 6 | 3 |
| Saskatchewan | 5 | 4 | 0 | 0 |
| Alberta | 17 | 32 | 11 | 18 |
| British Columbia | 15 | 17 | 6 | 5 |
| Northwest Territories | 0 | 0 | 0 | 0 |
| Canada | 87 | 108 | 42 | 43 |

*There were no occurrences with dangerous goods release to date in 2005 and two in 2004 .



*Number of collisions with no derailments.

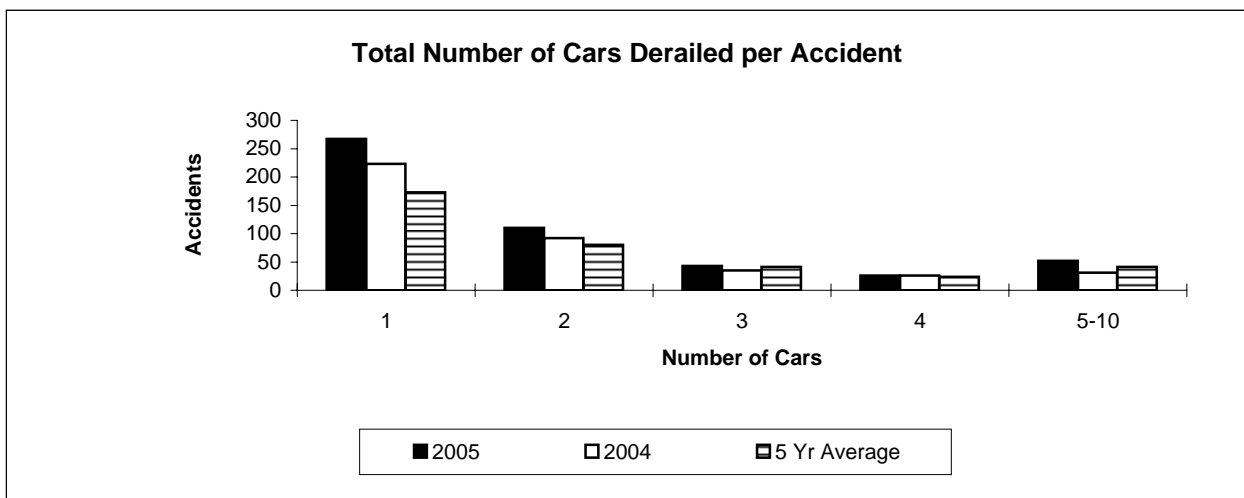
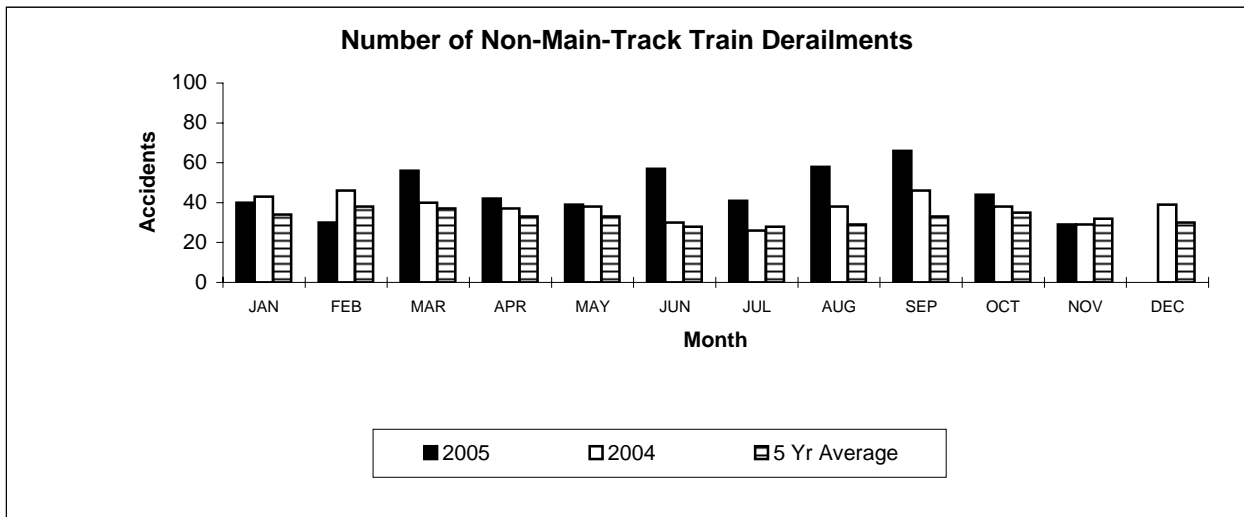
Figures are preliminary as of December 12th, 2005

Table 5

**Non-Main-Track Train Derailments
November 2005**

| Province | Total Accidents | | Accidents with DG Involvement | |
|-----------------------|-----------------|--------------|-------------------------------|--------------|
| | 2005 To Date | 2004 To Date | 2005 To Date | 2004 To Date |
| Newfoundland | 0 | 0 | 0 | 0 |
| Nova Scotia | 5 | 9 | 1 | 1 |
| New Brunswick | 14 | 12 | 6 | 5 |
| Quebec | 86 | 66 | 25 | 16 |
| Ontario | 140 | 149 | 23 | 33 |
| Manitoba | 35 | 30 | 11 | 10 |
| Saskatchewan | 45 | 25 | 3 | 3 |
| Alberta | 114 | 78 | 19 | 17 |
| British Columbia | 62 | 42 | 12 | 9 |
| Northwest Territories | 1 | 0 | 1 | 0 |
| Canada | 502 | 411 | 101 | 94 |

*There was one occurrence with dangerous goods release in 2005 and one in 2004 to date.



Figures are preliminary as of December 12th, 2005