

Transportation Safety Board of Canada

**Table 1
Railway Occurrence and Casualty Statistics for August 2005**

| | August | | | Year To Date | | |
|----------------------------------------------|------------|-----------|----------------------|--------------|------------|----------------------|
| | 2005 | 2004 | 2000-2004 Average | 2005 | 2004 | 2000-2004 Average |
| Accidents | | | | | | |
| Main-Track Train Collisions | 0 | 0 | 1 | 3 | 5 | 6 |
| Main-Track Train Derailments | 16 | 7 | 12 | 143 | 104 | 95 |
| Crossings | 23 | 17 | 19 | 183 | 156 | 168 |
| Non-Main-Track Train Collisions | 9 | 4 | 8 | 60 | 77 | 75 |
| Non-Main-Track Train Derailments | 54 | 38 | 29 | 353 | 298 | 261 |
| Collisions/Derailments Involving Track Units | 4 | 4 | 2 | 13 | 22 | 14 |
| Employee/Passenger | 2 | 0 | 1 | 3 | 7 | 7 |
| Trespassers | 9 | 12 | 10 | 58 | 59 | 51 |
| Fires/Explosions | 0 | 1 | 3 | 14 | 11 | 20 |
| Other | 2 | 3 | 2 | 12 | 15 | 17 |
| Total | 119 | 86 | 86 | 842 | 754 | 713 |
| Incidents | | | | | | |
| Dangerous Goods Leaker | 13 | 16 | 19 | 90 | 94 | 115 |
| Main-track Switch in Abnormal Position | 0 | 0 | 1 | 8 | 5 | 8 |
| Movement Exceeds Limits of Authority | 8 | 7 | 8 | 66 | 61 | 62 |
| Runaway Rolling Stock | 1 | 1 | 1 | 12 | 7 | 8 |
| Others | 0 | 1 | 2 | 2 | 4 | 9 |
| Total | 22 | 25 | 30 | 178 | 171 | 202 |
| Million Train-miles* | | | | 63,40 | 60,60 | 59,90 |
| Accidents/Million Train-miles | | | | 13,28 | 12,44 | 11,90 |
| Accidents Involving Dangerous Goods | | | | | | |
| Main-track Train Derailments | 6 | 1 | 3 | 29 | 25 | 21 |
| Crossings | 1 | 0 | 1 | 6 | 7 | 5 |
| Non-Main-Track Train Collisions | 4 | 1 | 3 | 32 | 31 | 32 |
| Non-Main-Track Train Derailments | 6 | 10 | 9 | 67 | 73 | 87 |
| All Others | 0 | 0 | 1 | 8 | 6 | 7 |
| Total | 17 | 12 | 16 | 142 | 142 | 152 |
| Accidents with a DG Release | 2 | 2 | 1 | 6 | 5 | 5 |
| Accidents Involving Passenger Trains | 10 | 9 | 8 | 62 | 55 | 47 |
| Fatalities | | | | | | |
| Crossings | 4 | 5 | 6 | 26 | 12 | 21 |
| Trespassers | 5 | 10 | 7 | 45 | 39 | 34 |
| All Others | 0 | 0 | 0 | 1 | 4 | 2 |
| Total | 9 | 15 | 13 | 72 | 55 | 57 |
| Serious Injuries | | | | | | |
| Crossings | 2 | 1 | 2 | 42 | 34 | 28 |
| Trespassers | 3 | 2 | 3 | 12 | 20 | 16 |
| All Others | 2 | 0 | 1 | 3 | 7 | 10 |
| Total | 7 | 3 | 6 | 57 | 61 | 54 |

* Train-miles estimated. (Source: Transport Canada)

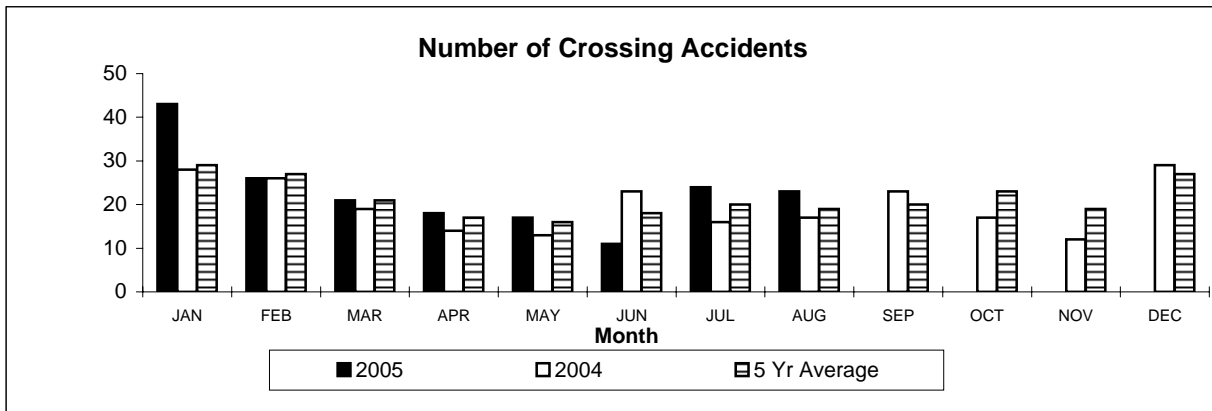
Figures are preliminary as of September 12th, 2005

All 5-year averages have been rounded. The totals sometimes do not coincide to the sum of these averages.

Transportation Safety Board of Canada

**Table 2
Railway Crossing and Trespasser Accidents for August 2005**

| Province | | 2005 Year To Date | | | | Crossing | | Trespasser | |
|------------|------------------|------------------------------------------|---------|-----------|-----------|---------------|------|--------------|------|
| | | Public Crossings (by Protection Type) | | Private | Farm | Total To Date | | Year To Date | |
| | | Automated | Passive | Crossings | Crossings | 2005 | 2004 | 2005 | 2004 |
| NFL | Accidents | 0 | 0 | 0 | 0 | 0 | 0 | 1 | |
| | Fatalities | 0 | 0 | 0 | 0 | 0 | 0 | 0 | |
| | Serious Injuries | 0 | 0 | 0 | 0 | 0 | 0 | 1 | |
| NS | Accidents | 3 | 1 | 0 | 0 | 4 | 0 | 1 | |
| | Fatalities | 0 | 0 | 0 | 0 | 0 | 0 | 0 | |
| | Serious Injuries | 2 | 0 | 0 | 0 | 2 | 0 | 1 | |
| NB | Accidents | 1 | 1 | 0 | 0 | 2 | 1 | 0 | |
| | Fatalities | 1 | 0 | 0 | 0 | 1 | 0 | 0 | |
| | Serious Injuries | 0 | 0 | 0 | 0 | 0 | 2 | 0 | |
| QUE | Accidents | 32 | 3 | 7 | 0 | 42 | 44 | 12 | |
| | Fatalities | 4 | 0 | 1 | 0 | 5 | 6 | 11 | |
| | Serious Injuries | 9 | 1 | 1 | 0 | 11 | 10 | 1 | |
| ONT | Accidents | 35 | 14 | 7 | 2 | 58 | 46 | 29 | |
| | Fatalities | 7 | 1 | 0 | 1 | 9 | 5 | 22 | |
| | Serious Injuries | 9 | 1 | 2 | 0 | 12 | 6 | 6 | |
| MAN | Accidents | 11 | 2 | 0 | 0 | 13 | 13 | 4 | |
| | Fatalities | 2 | 0 | 0 | 0 | 2 | 1 | 3 | |
| | Serious Injuries | 1 | 0 | 0 | 0 | 1 | 4 | 1 | |
| SAS | Accidents | 5 | 5 | 1 | 0 | 11 | 9 | 0 | |
| | Fatalities | 1 | 1 | 0 | 0 | 2 | 0 | 0 | |
| | Serious Injuries | 1 | 2 | 0 | 0 | 3 | 2 | 0 | |
| ALT | Accidents | 21 | 13 | 3 | 0 | 38 | 21 | 5 | |
| | Fatalities | 3 | 1 | 0 | 0 | 4 | 0 | 4 | |
| | Serious Injuries | 8 | 2 | 0 | 0 | 10 | 7 | 1 | |
| BC | Accidents | 8 | 2 | 4 | 0 | 14 | 21 | 6 | |
| | Fatalities | 1 | 0 | 2 | 0 | 3 | 0 | 4 | |
| | Serious Injuries | 2 | 0 | 1 | 0 | 3 | 3 | 2 | |
| NWT | Accidents | 0 | 1 | 0 | 0 | 1 | 1 | 0 | |
| | Fatalities | 0 | 0 | 0 | 0 | 0 | 0 | 0 | |
| | Serious Injuries | 0 | 0 | 0 | 0 | 0 | 0 | 0 | |
| CAN | Accidents | 116 | 42 | 22 | 2 | 183 | 156 | 58 | |
| | Fatalities | 19 | 3 | 3 | 1 | 26 | 12 | 45 | |
| | Serious Injuries | 32 | 6 | 4 | 0 | 42 | 34 | 12 | |



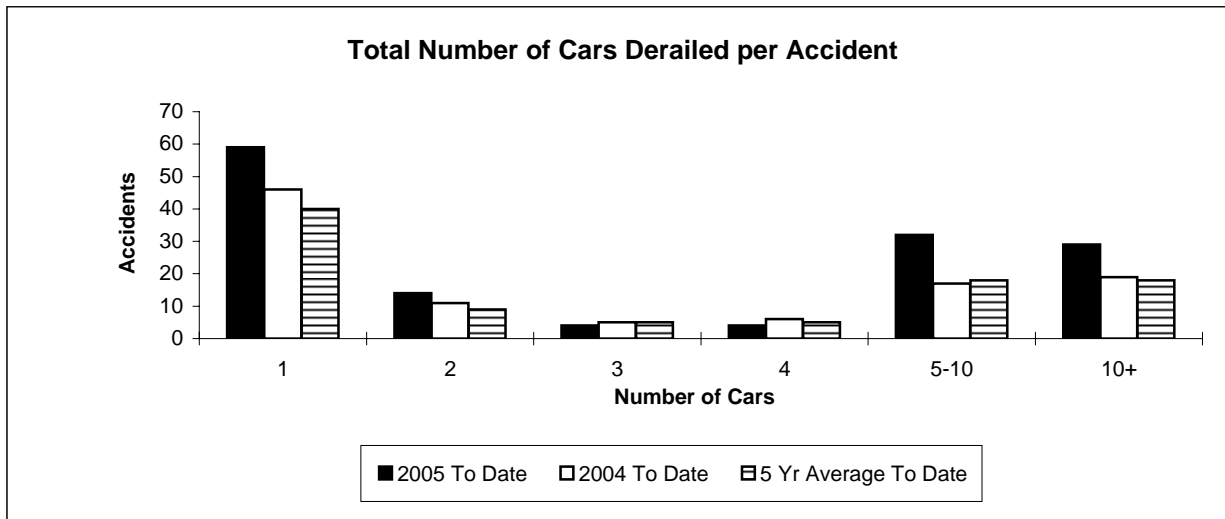
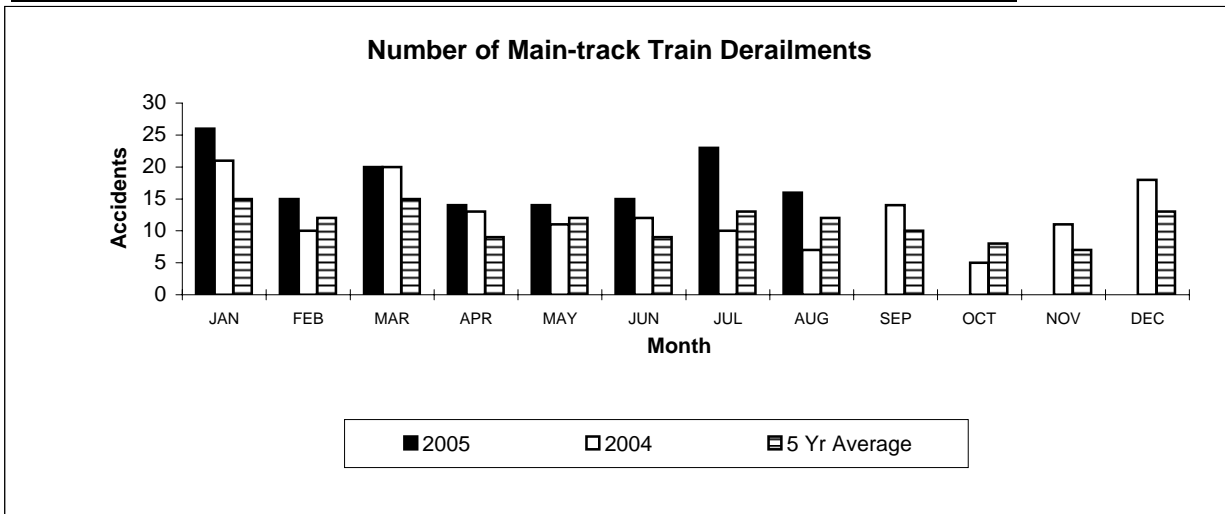
Figures are preliminary as of September 12th, 2005

Table 3

**Main-Track Train Derailments
August 2005**

| Province | Total Accidents | | Accidents with DG Involvement | |
|-----------------------|-----------------|--------------|-------------------------------|--------------|
| | 2005 To Date | 2004 To Date | 2005 To Date | 2004 To Date |
| Newfoundland | 1 | 0 | 0 | 0 |
| Nova Scotia | 0 | 1 | 0 | 0 |
| New Brunswick | 1 | 3 | 1 | 2 |
| Quebec | 22 | 16 | 3 | 4 |
| Ontario | 45 | 36 | 10 | 10 |
| Manitoba | 7 | 6 | 2 | 0 |
| Saskatchewan | 16 | 8 | 1 | 2 |
| Alberta | 25 | 13 | 8 | 6 |
| British Columbia | 26 | 21 | 4 | 1 |
| Northwest Territories | 0 | 0 | 0 | 0 |
| Canada | 143 | 104 | 29 | 25 |

*There were three occurrences with dangerous goods release to date in 2005 and one in 2004.



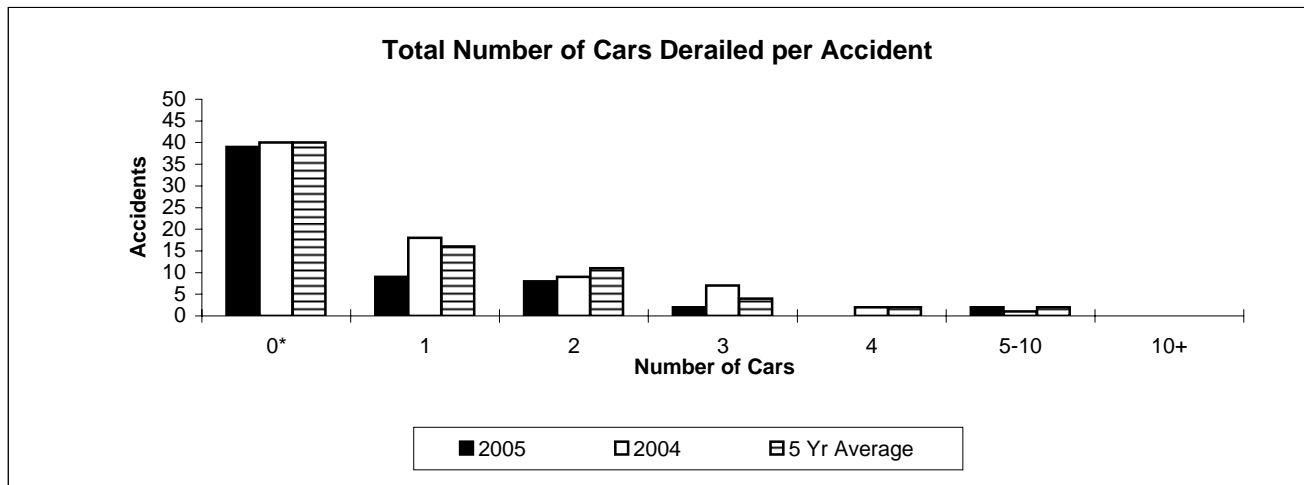
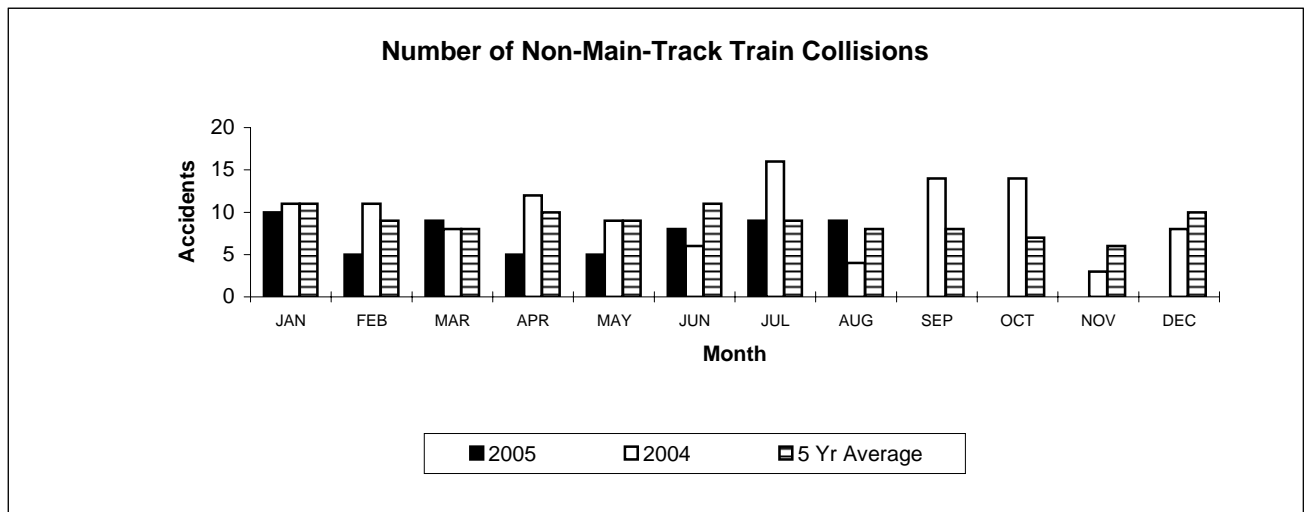
Figures are preliminary as of September 12th, 2005

Table 4

**Non-Main-Track Train Collisions
August 2005**

| Province | Total Accidents | | Accidents with DG Involvement | |
|-----------------------|-----------------|--------------|-------------------------------|--------------|
| | 2005 To Date | 2004 To Date | 2005 to Date | 2004 To Date |
| Newfoundland | 0 | 0 | 0 | 0 |
| Nova Scotia | 0 | 0 | 0 | 0 |
| New Brunswick | 1 | 1 | 1 | 1 |
| Quebec | 9 | 13 | 2 | 5 |
| Ontario | 18 | 20 | 13 | 7 |
| Manitoba | 8 | 6 | 6 | 3 |
| Saskatchewan | 5 | 4 | 0 | 0 |
| Alberta | 11 | 24 | 7 | 14 |
| British Columbia | 8 | 9 | 3 | 1 |
| Northwest Territories | 0 | 0 | 0 | 0 |
| Canada | 60 | 77 | 32 | 31 |

*There were no occurrences with dangerous goods release to date in 2005 and two in 2004 .



*Number of collisions with no derailments.

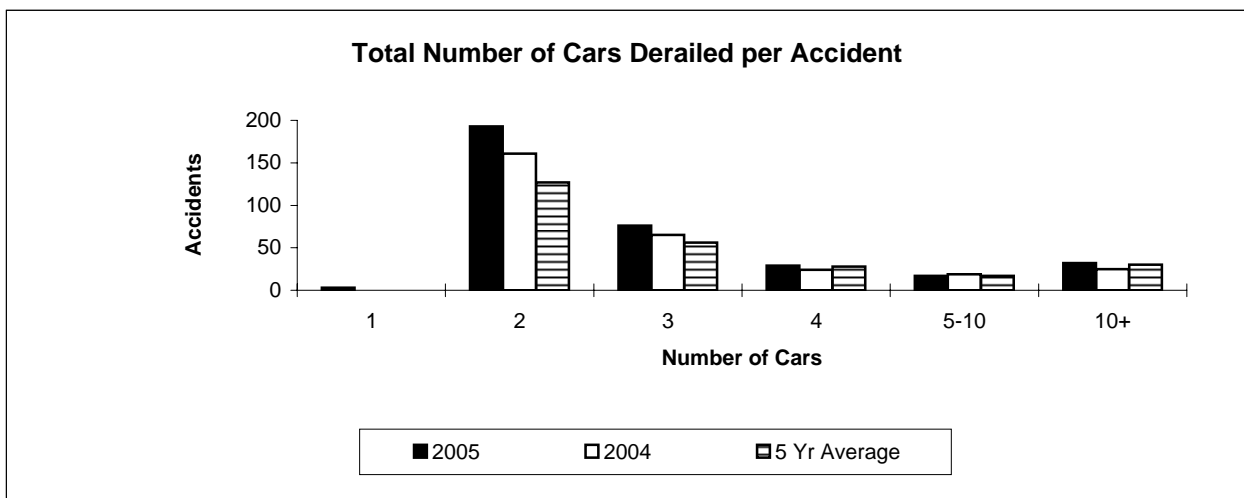
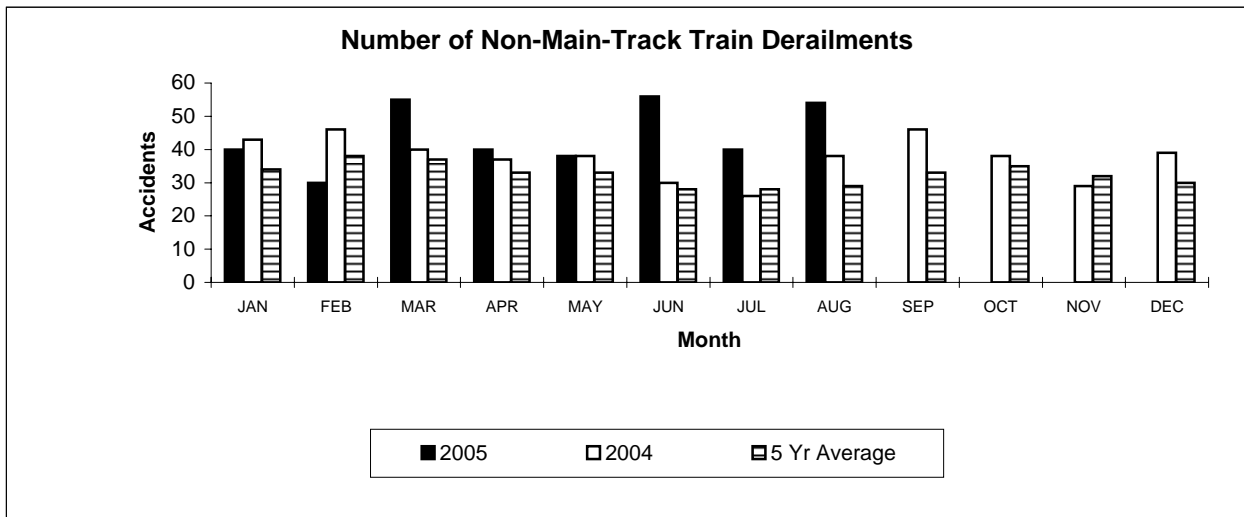
Figures are preliminary as of September 12th, 2005

Table 5

**Non-Main-Track Train Derailments
August 2005**

| Province | Total Accidents | | Accidents with DG Involvement | |
|-----------------------|-----------------|--------------|-------------------------------|--------------|
| | 2005 To Date | 2004 To Date | 2005 To Date | 2004 To Date |
| Newfoundland | 0 | 0 | 0 | 0 |
| Nova Scotia | 3 | 6 | 0 | 0 |
| New Brunswick | 8 | 9 | 3 | 5 |
| Quebec | 50 | 48 | 22 | 12 |
| Ontario | 105 | 112 | 12 | 25 |
| Manitoba | 28 | 24 | 8 | 8 |
| Saskatchewan | 31 | 18 | 1 | 2 |
| Alberta | 89 | 53 | 13 | 14 |
| British Columbia | 39 | 28 | 8 | 7 |
| Northwest Territories | 0 | 0 | 0 | 0 |
| Canada | 353 | 298 | 67 | 73 |

*There was one occurrence with dangerous goods release in 2005 and one in 2004 to date.



Figures are preliminary as of September 12th, 2005