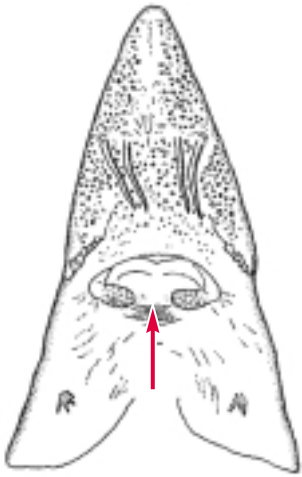


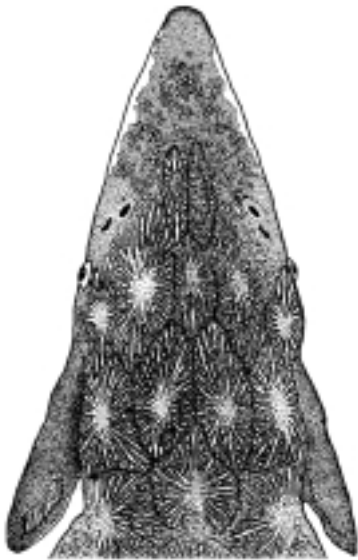
Yellow Section
Section jaune
Sección amarilla



Acipenseridae:  25 Spp. I or/ou/o II  0 Sp.



lower lip interrupted
lèvre inférieure interrompue
labio inferior interrumpido

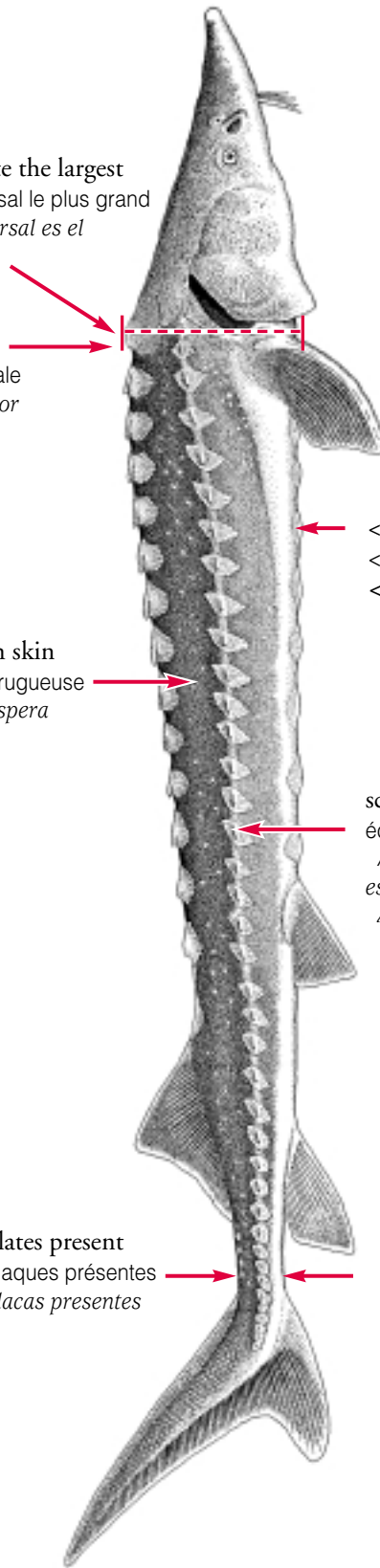


rough skin
peau rugueuse
piel áspera



1st dorsal scute the largest
1^{er} écusson dorsal le plus grand
el 1^{er} escudo dorsal es el más grande

highest point
hauteur maximale
el espesor mayor



< 10 ventral scutes
< 10 écussons ventraux
< 10 escudos ventrales

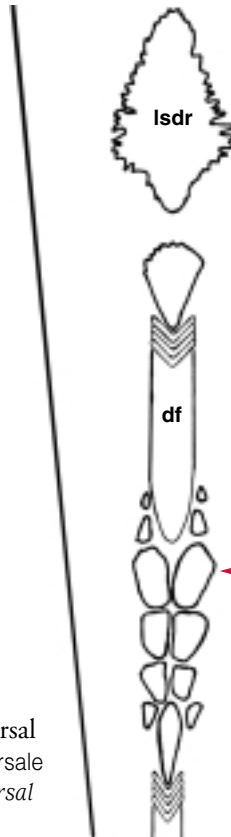
scutes larger than *A. nudiventris*
écussons plus gros que chez
A. nudiventris
escudos más grandes que
A. nudiventris

plates present
plaques présentes
placas presentes

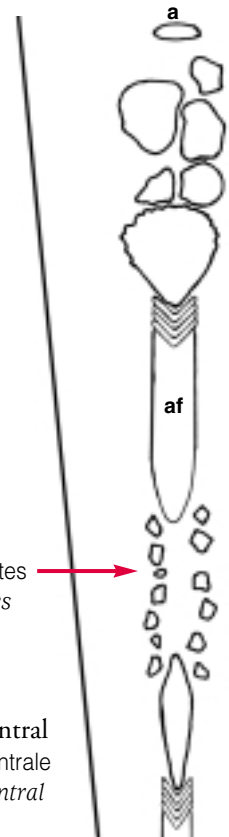
Similar species / Espèce semblable / Especie semejante : *A. nudiventris* **4**



lateral
latérale
lateral

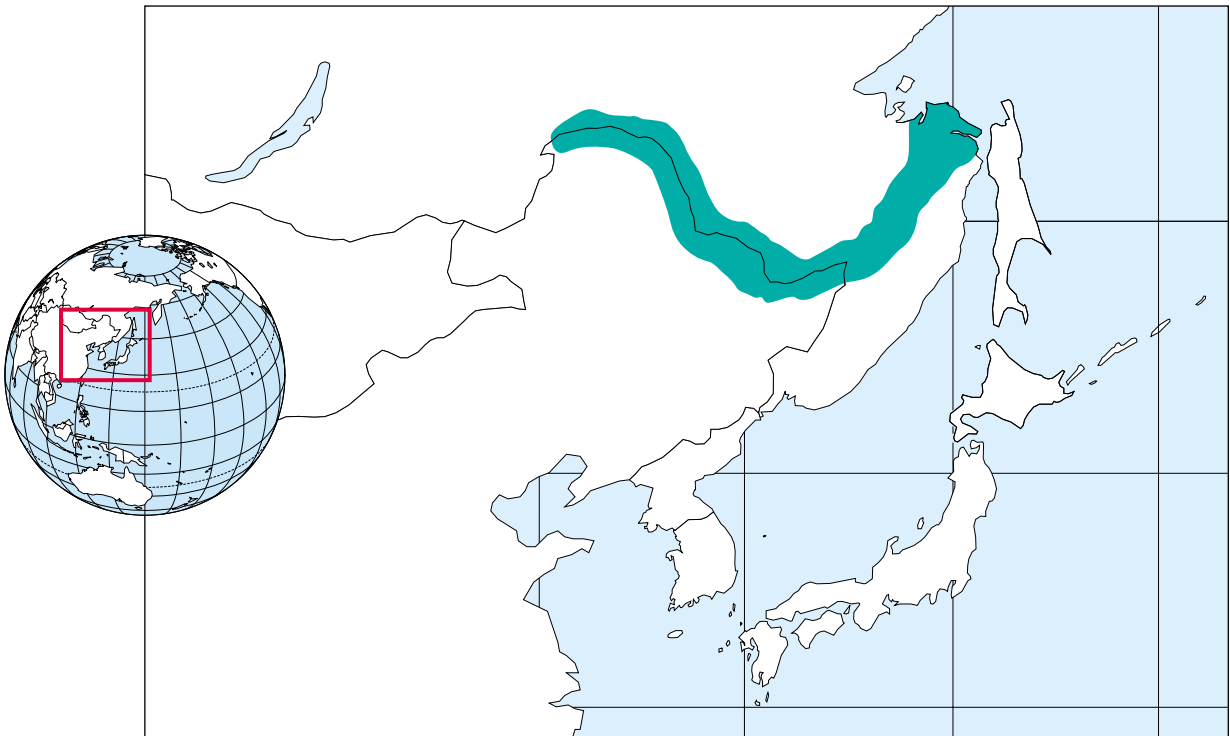


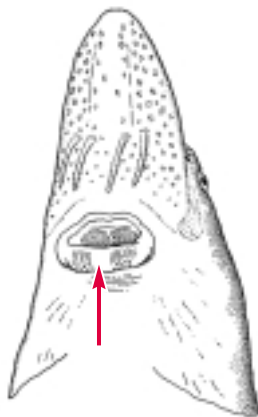
dorsal
dorsale
dorsal



ventral
ventrale
ventral

plates present
plaques présentes
placas presentes





1st dorsal scute the largest
1^{er} écusson dorsal le plus grand
el 1^{er} escudo dorsal es el más grande

highest point
hauteur maximale
el espesor mayor



lower lip continuous
lèvre inférieure continue
labio inferior continuo

smooth skin
peau lisse
piel lisa

>10 ventral scutes —
absorbed in large fish

>10 écussons ventraux —
résorbés chez les gros
spécimens

>10 escudos ventrales —
absorbidos en los peces
grandes

juvenile / juvénile / joven

black patch
tache noire
mancha negra

lightly fimbriated
à peine frangés
apenas fimbriadas

rough skin
peau rugueuse
piel áspera

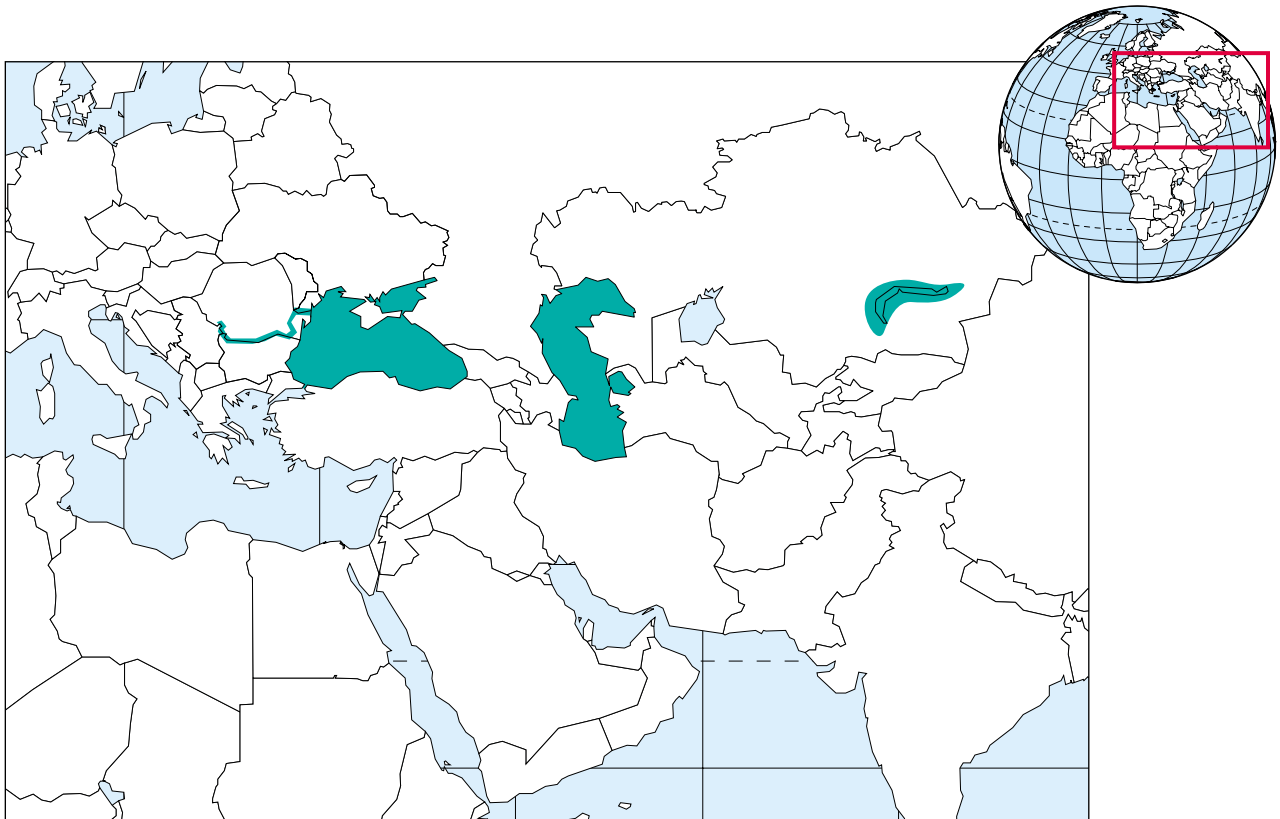
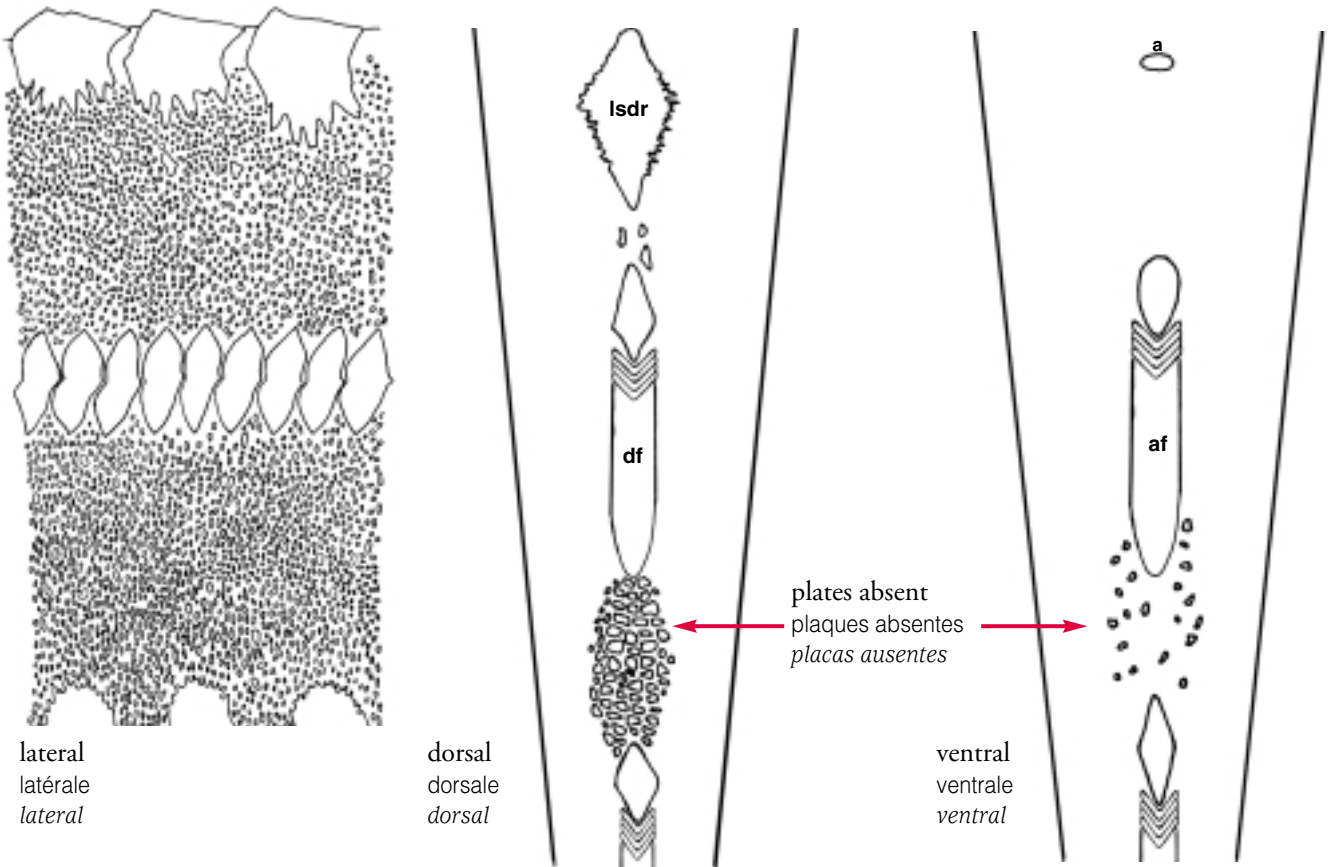
large fin with highly
ossified edge
grande nageoire avec
marge ossifiée
gran aleta con
margen osificado

scutes smaller than
A. schrenckii,
equal to *A. ruthenus*

écussons plus petits que
chez *A. schrenckii*,
égaux à ceux d'*A. ruthenus*

escudos más pequeños
que *A. schrenckii*, iguales
a *A. ruthenus*

plates absent
plaques absentes
placas ausentes

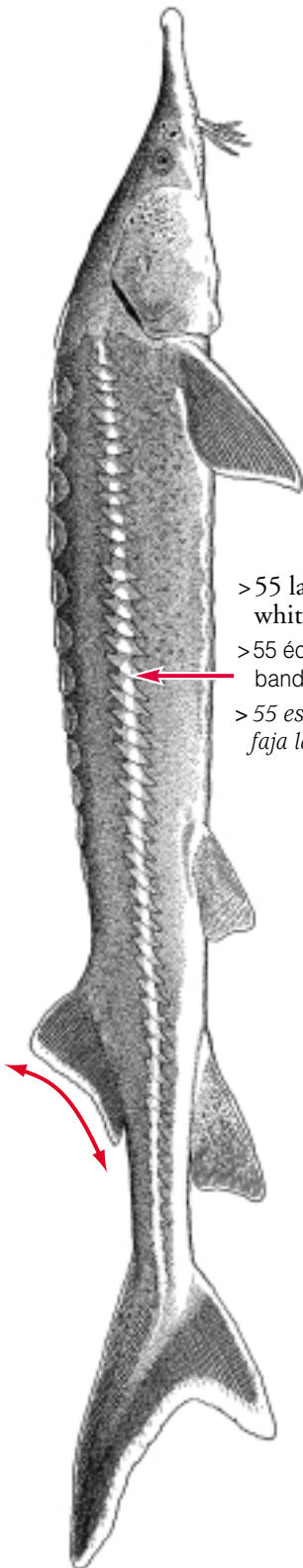




adult 38 cm, Danube stock
adulte 38 cm, stock du Danube
adulto 38 cm, población del Danubio

giant female 76 cm, Danube stock
femelle géante 76 cm, stock du Danube
hembra gigante 76 cm, población del Danubio

juvenile 20 cm, Danube stock
juvénile 20 cm, stock du Danube
joven 20 cm, población del Danubio



>55 lateral scutes
white lateral band
>55 écussons latéraux
bande latérale blanche
>55 escudos laterales
faja lateral blanca

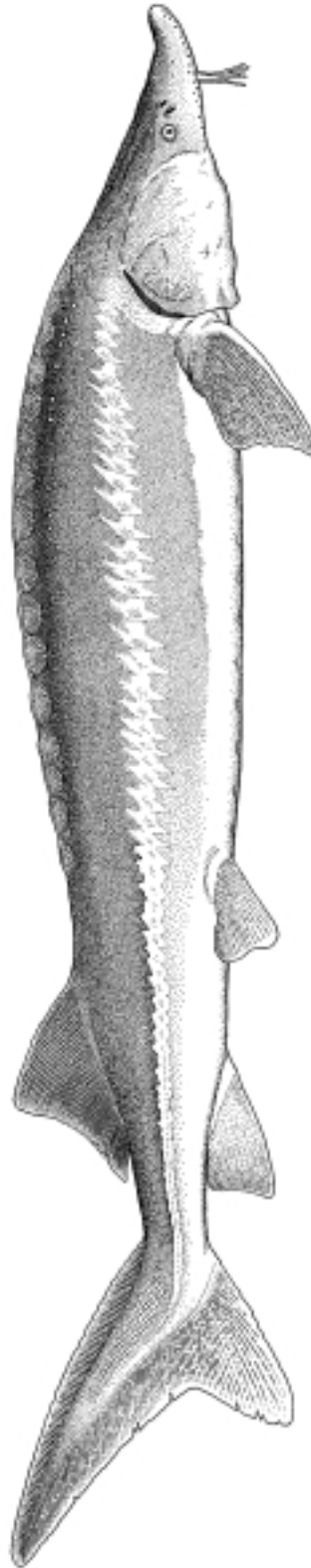


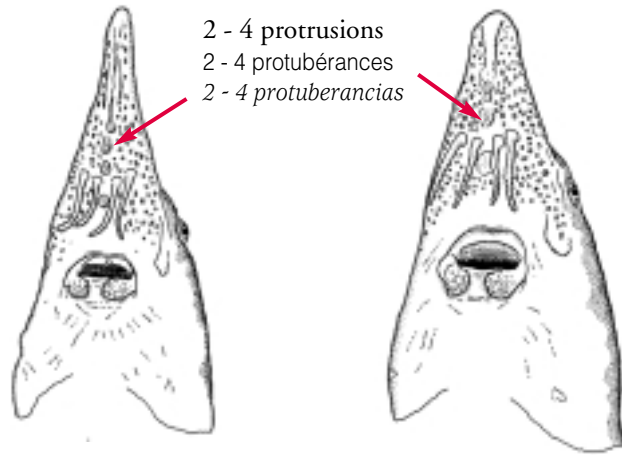
Similar species / Espèces semblables / Especies semejantes : *A. baerii* 22, *A. stellatus* 42, *A. transmontanus* 46

adult 55 cm, Volga stock
adulte 55 cm, stock du Volga
adulto 55 cm, población del Volga

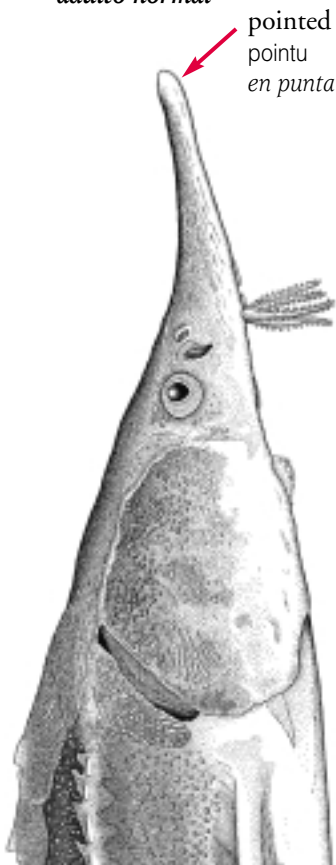
A. ruthenus x *Huso huso* hybrid, 100 cm
hybride *A. ruthenus* x *Huso huso*, 100 cm
hibrido *A. ruthenus* x *Huso huso*, 100 cm

stout head, short snout
grosse tête, museau court
cabeza robusta, hocico corto

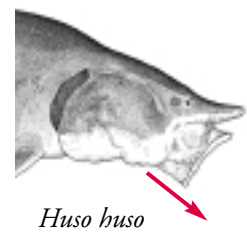
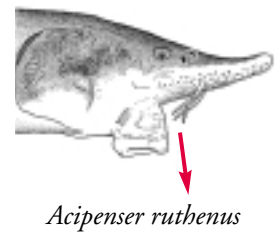
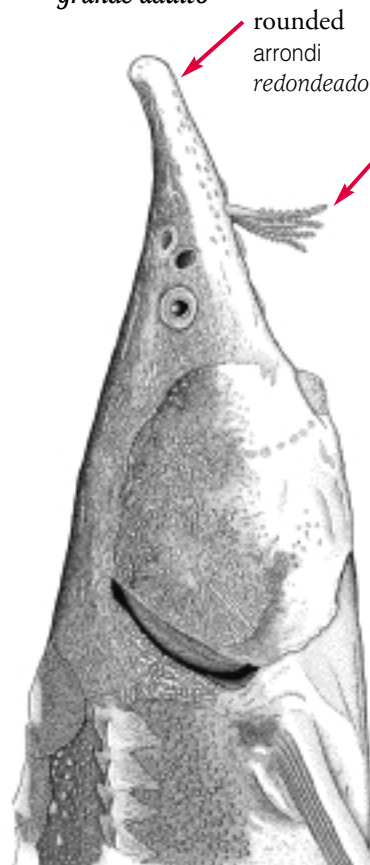


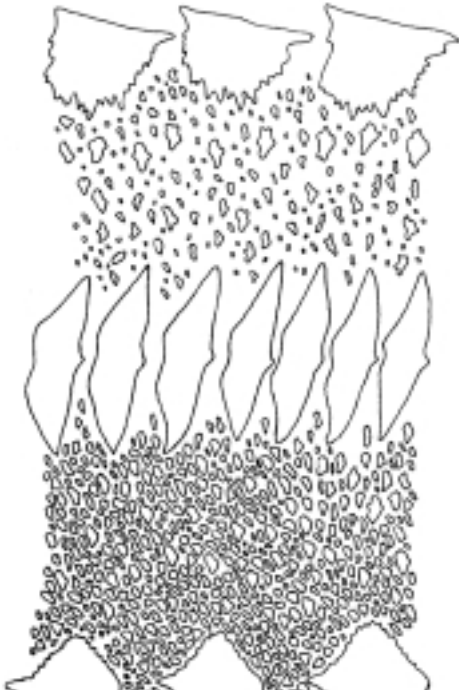


normal adult
adulte normal
adulto normal

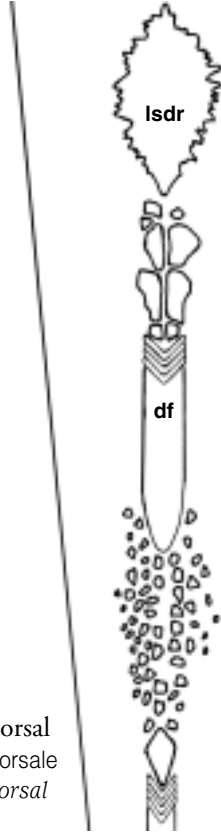


large adult
adulte de grande taille
grande adulto

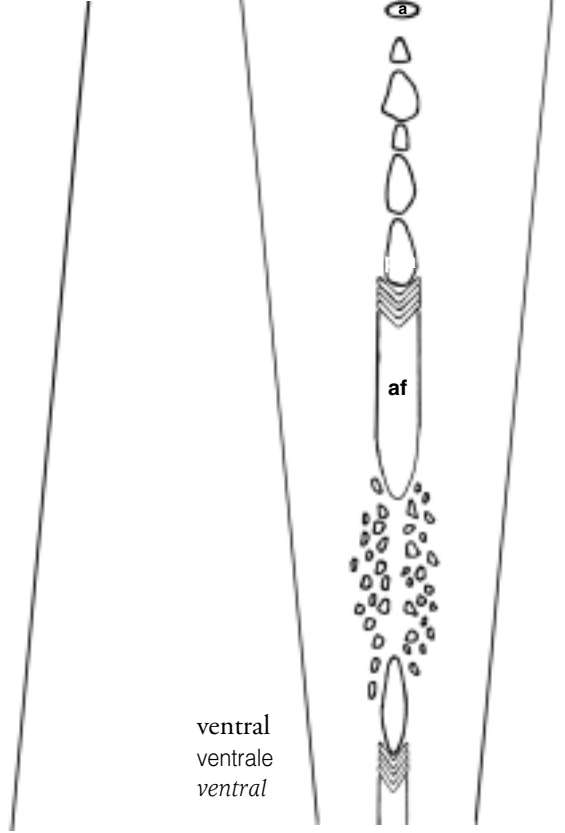




lateral
latérale
lateral



dorsal
dorsale
dorsal



ventral
ventrale
ventral



Note: identification between *A. sturio* and *A. oxyrinchus* can only be determined by genetic analysis. Verify the specimen's country of origin and consult an expert as needed

Note : *A. sturio* et *A. oxyrinchus* ne peuvent être distingués que par l'analyse de leurs caractéristiques génétiques. Vérifiez l'origine géographique du spécimen et référez à un expert au besoin.

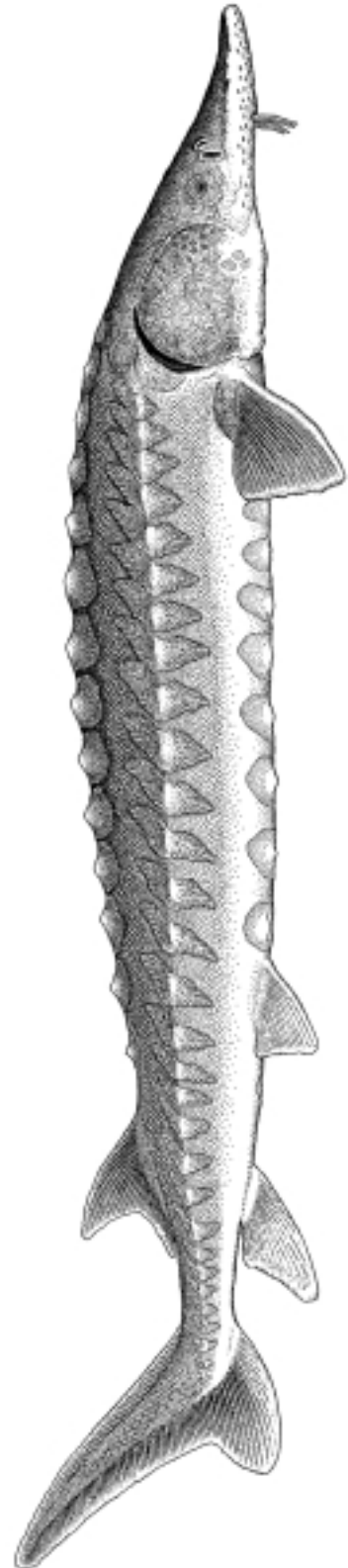
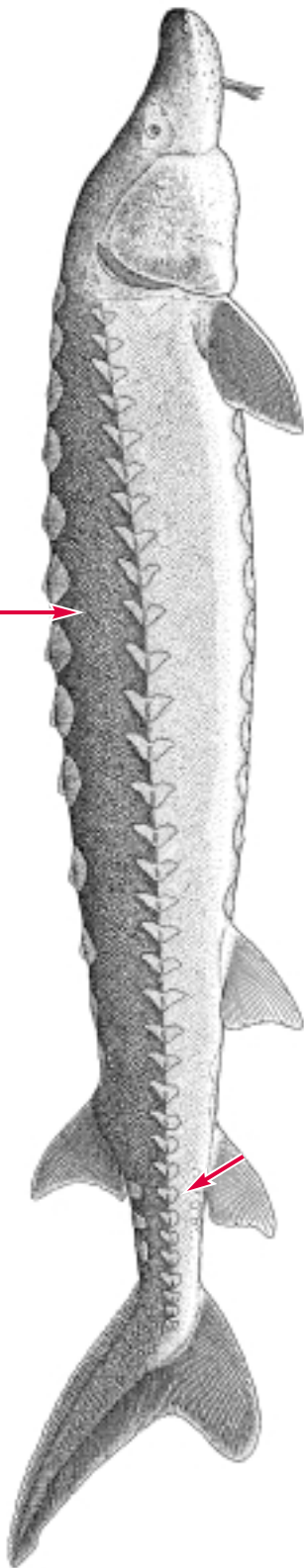
Nota: las especies *A. sturio* y *A. oxyrinchus* sólo se pueden distinguir mediante análisis genético. Verifique el país de origen del espécimen y consulte un experto si es necesario.

large adult, 300 cm
adulte de grande taille, 300 cm
adulto grande, 300 cm

juvenile, 100 cm
juvénile, 100 cm
joven, 100 cm

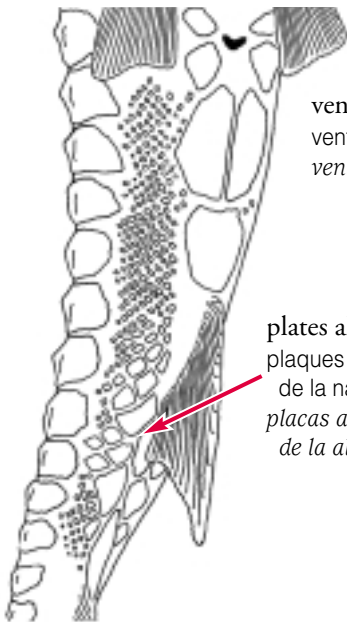


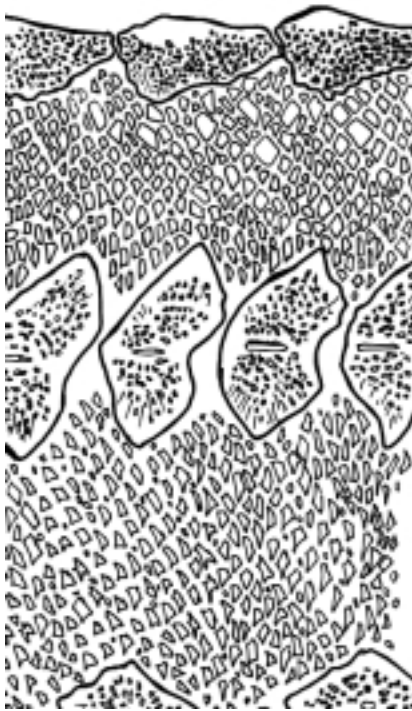
platelets
 plaquettes
 plaquetas



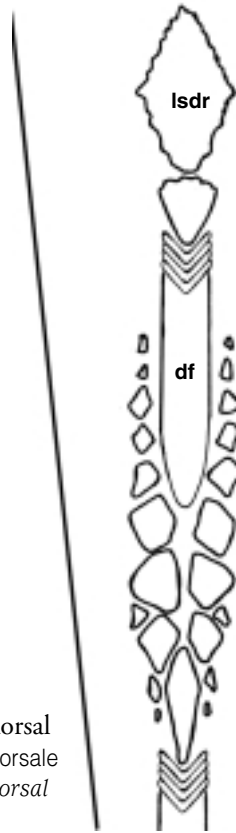
ventral
 ventrale
 ventral

plates along anal fin
 plaques sur les côtés
 de la nageoire anale
 placas a los lados
 de la aleta anal

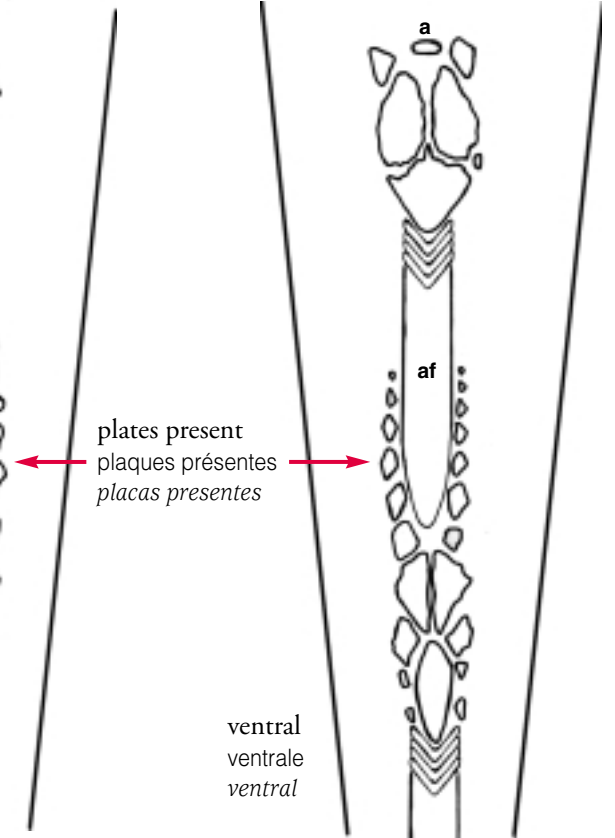




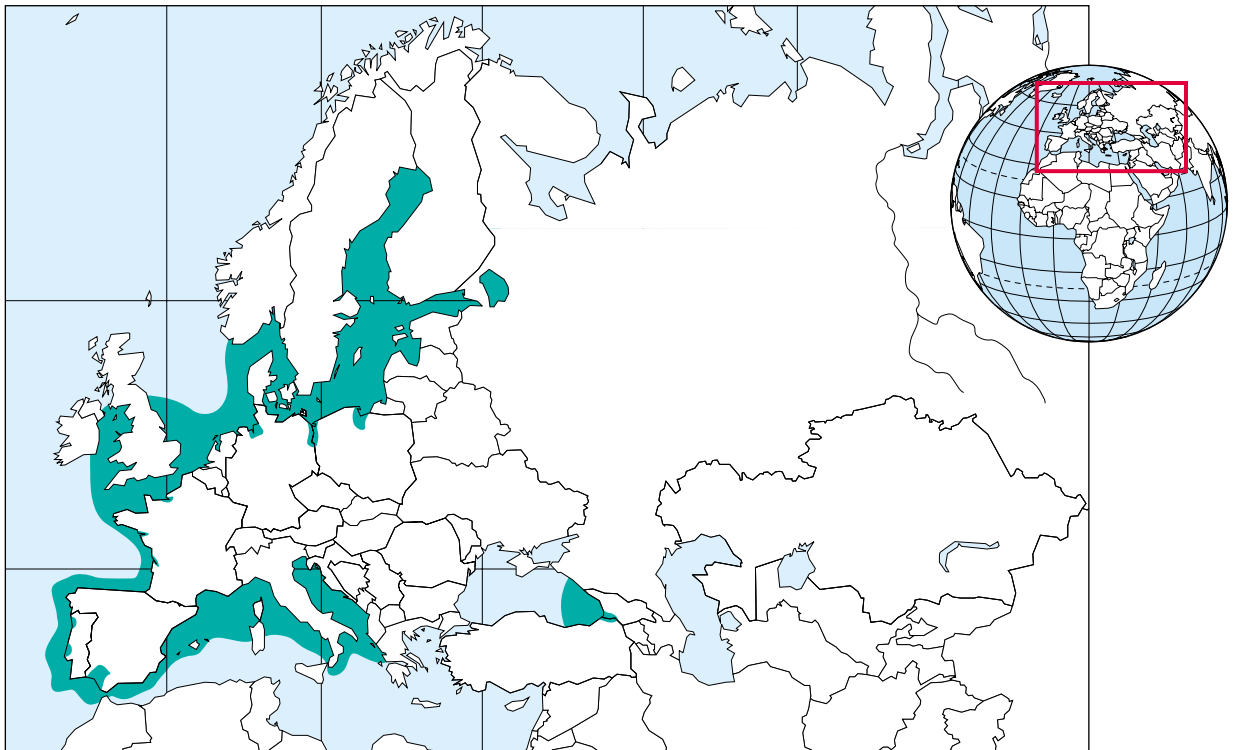
lateral
latérale
lateral



dorsal
dorsale
dorsal



ventral
ventrale
ventral



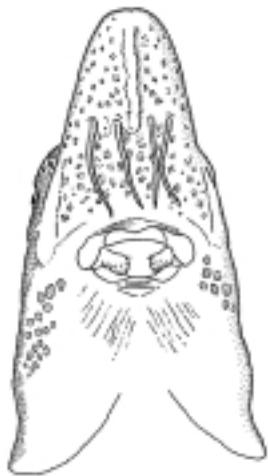


Note: identification between *A. sturio* and *A. oxyrinchus* can only be determined by genetic analysis. Verify the specimen's country of origin and consult an expert as needed.

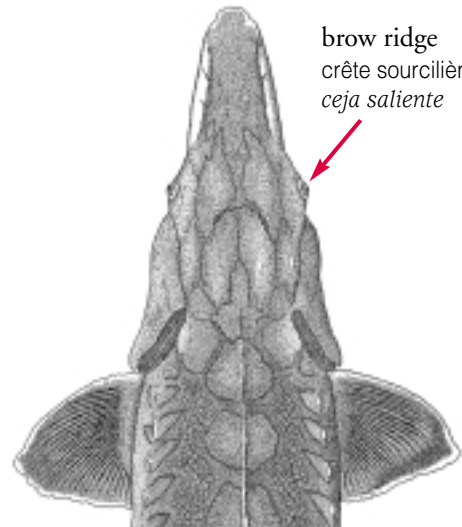
Note: *A. sturio* et *A. oxyrinchus* ne peuvent être distingués que par l'analyse de leurs caractéristiques génétiques. Vérifiez l'origine géographique du spécimen et référez à un expert au besoin.

Nota: las especies *A. sturio* y *A. oxyrinchus* sólo se pueden distinguir mediante análisis genético. Verifique el país de origen del espécimen y consulte un experto si es necesario.

adult / adulte / adulto



or/ou/o

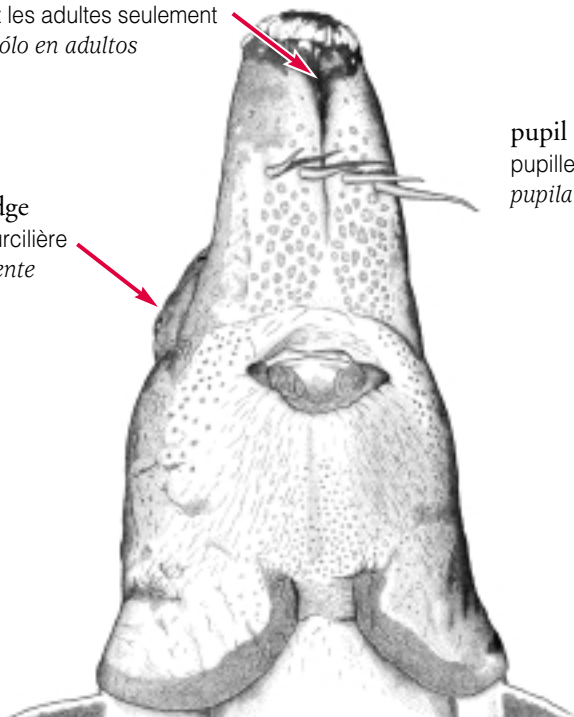


brow ridge
crête sourcilière
ceja saliente

adult / adulte / adulto

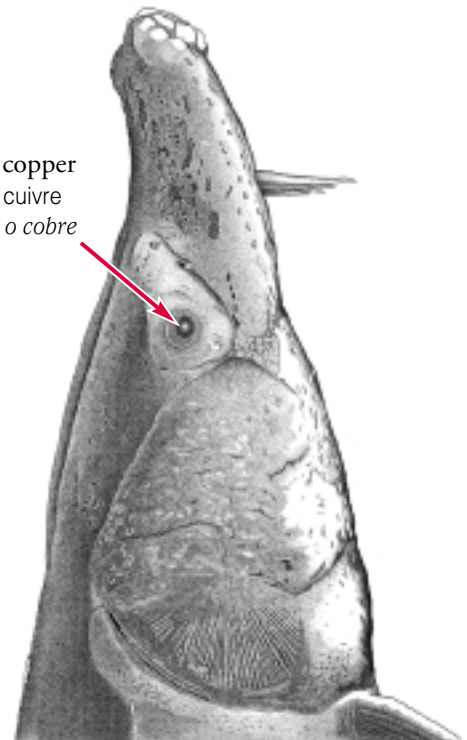
black patch in adults only
tache noire chez les adultes seulement
mancha negra sólo en adultos

brow ridge
crête sourcilière
ceja saliente



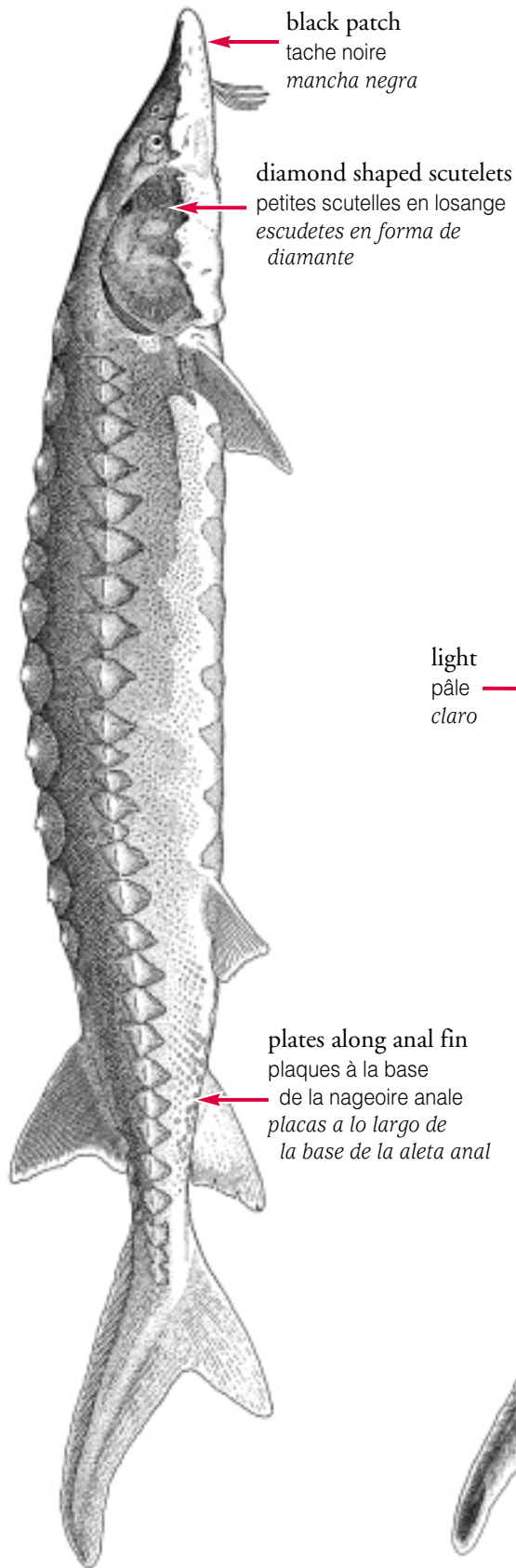
adult / adulte / adulto

pupil bronze, gold, or copper
pupille bronze, dorée ou cuivre
pupila color bronce, oro o cobre

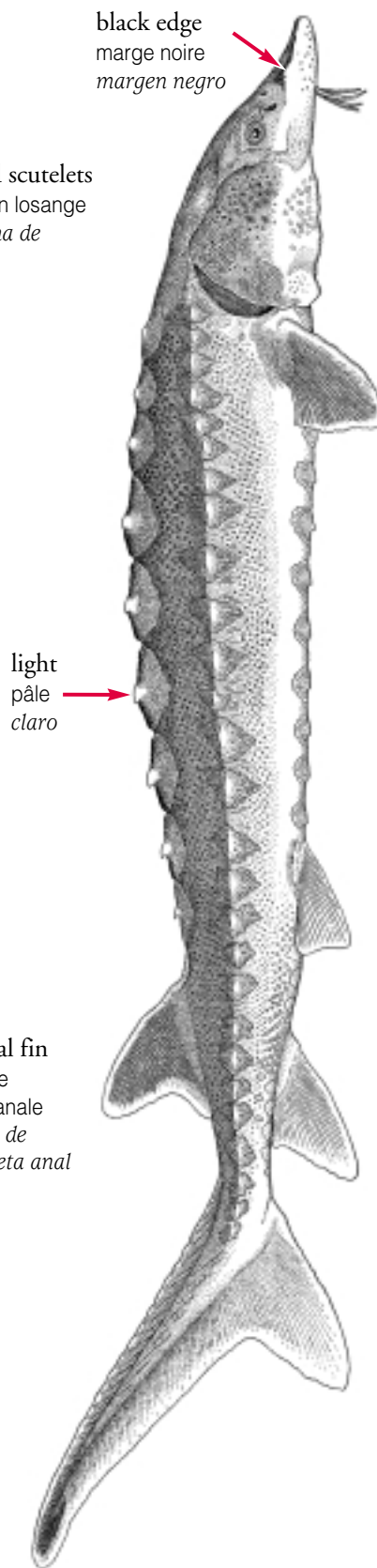


Similar species / Espèce semblable / Especie semejante : *A. sturio* 10

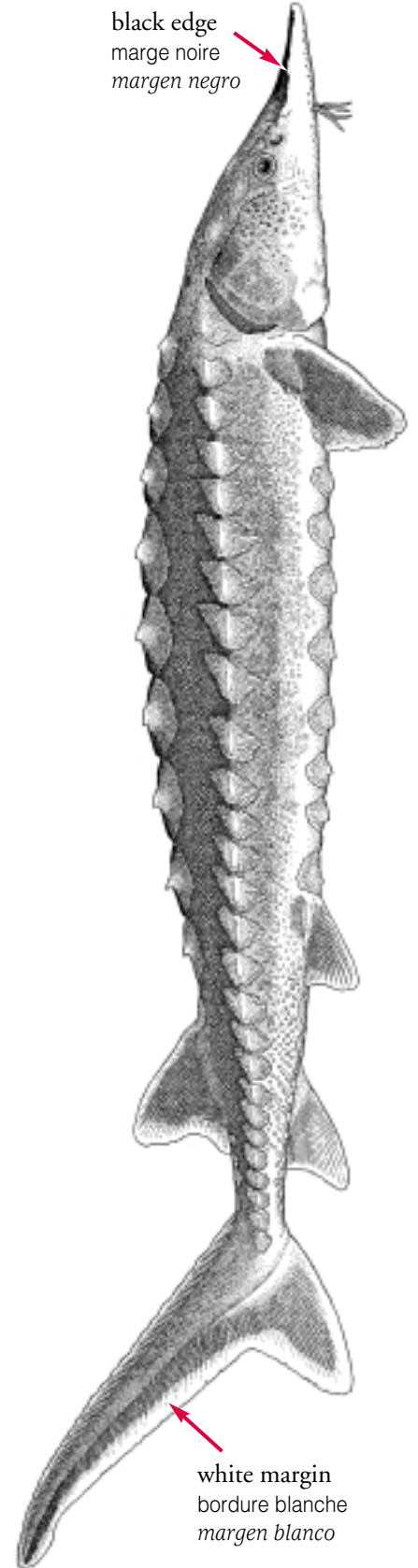
sub-adult / sub-adulte / sub-adulto



juvenile / juvénile / joven

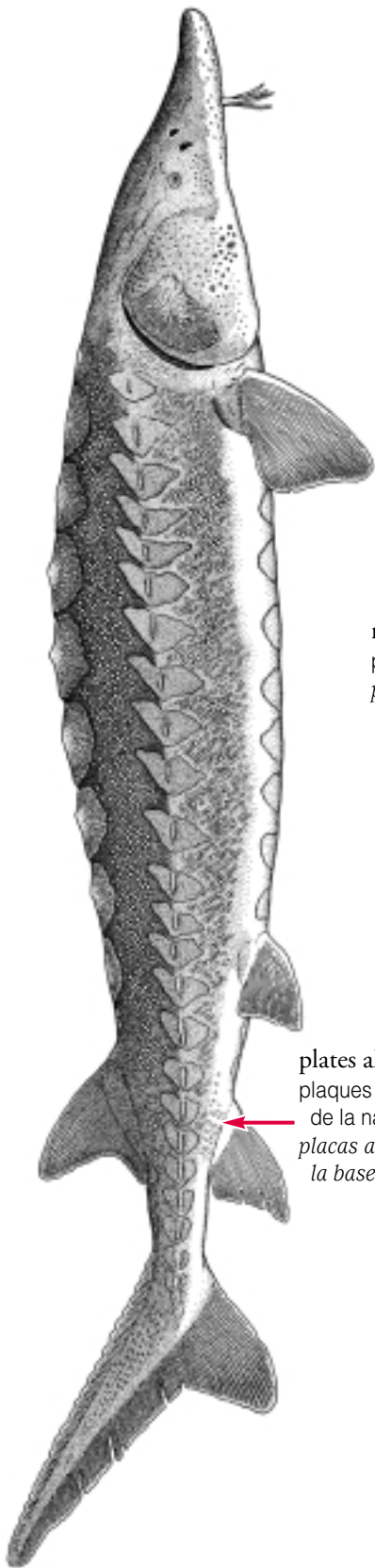


juvenile / juvénile / joven

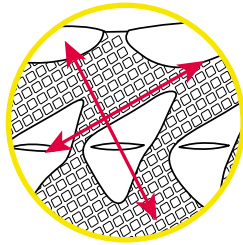


adult / adulte / adulto

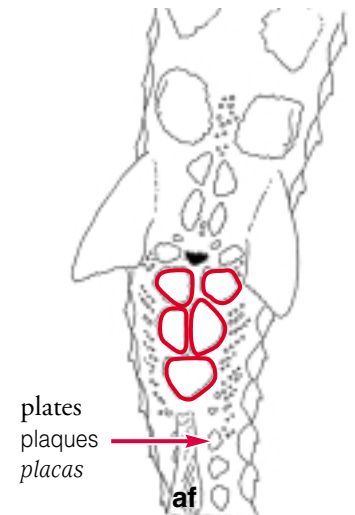
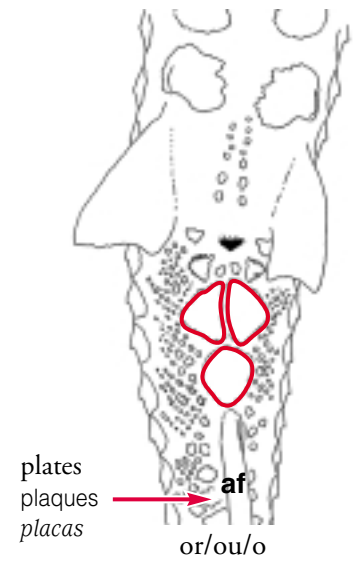
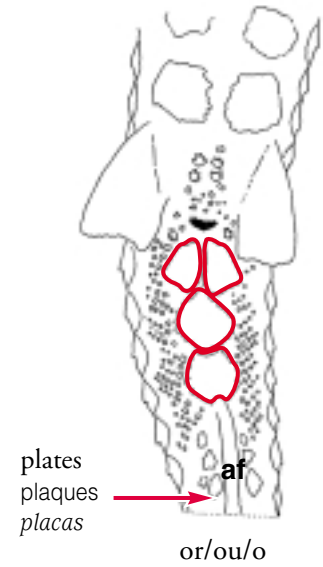
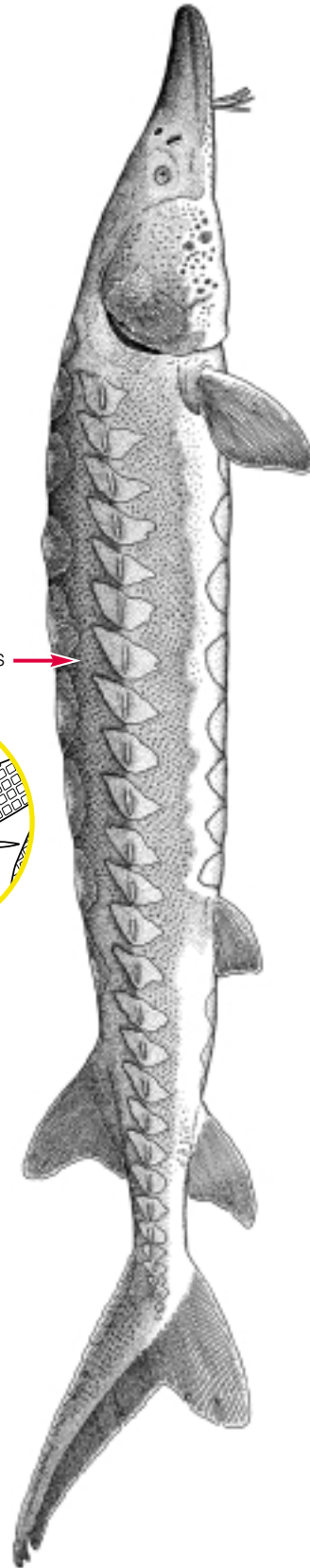
adult / adulte / adulto



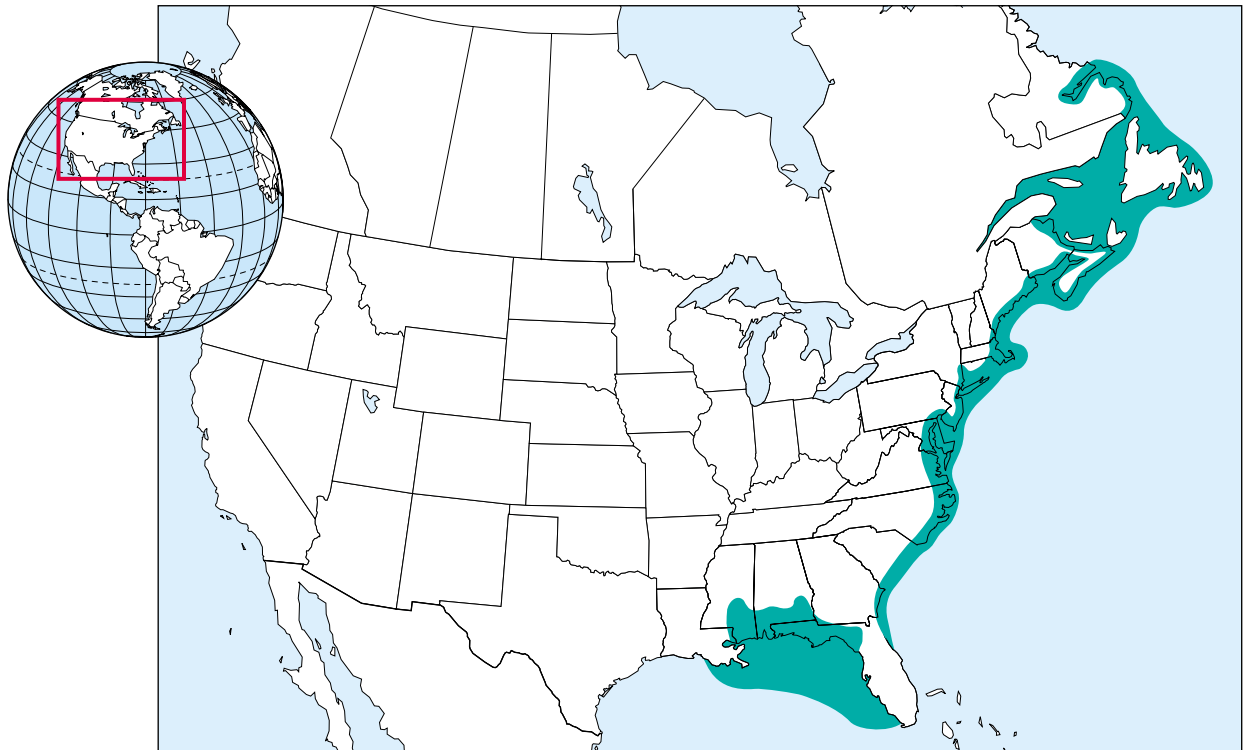
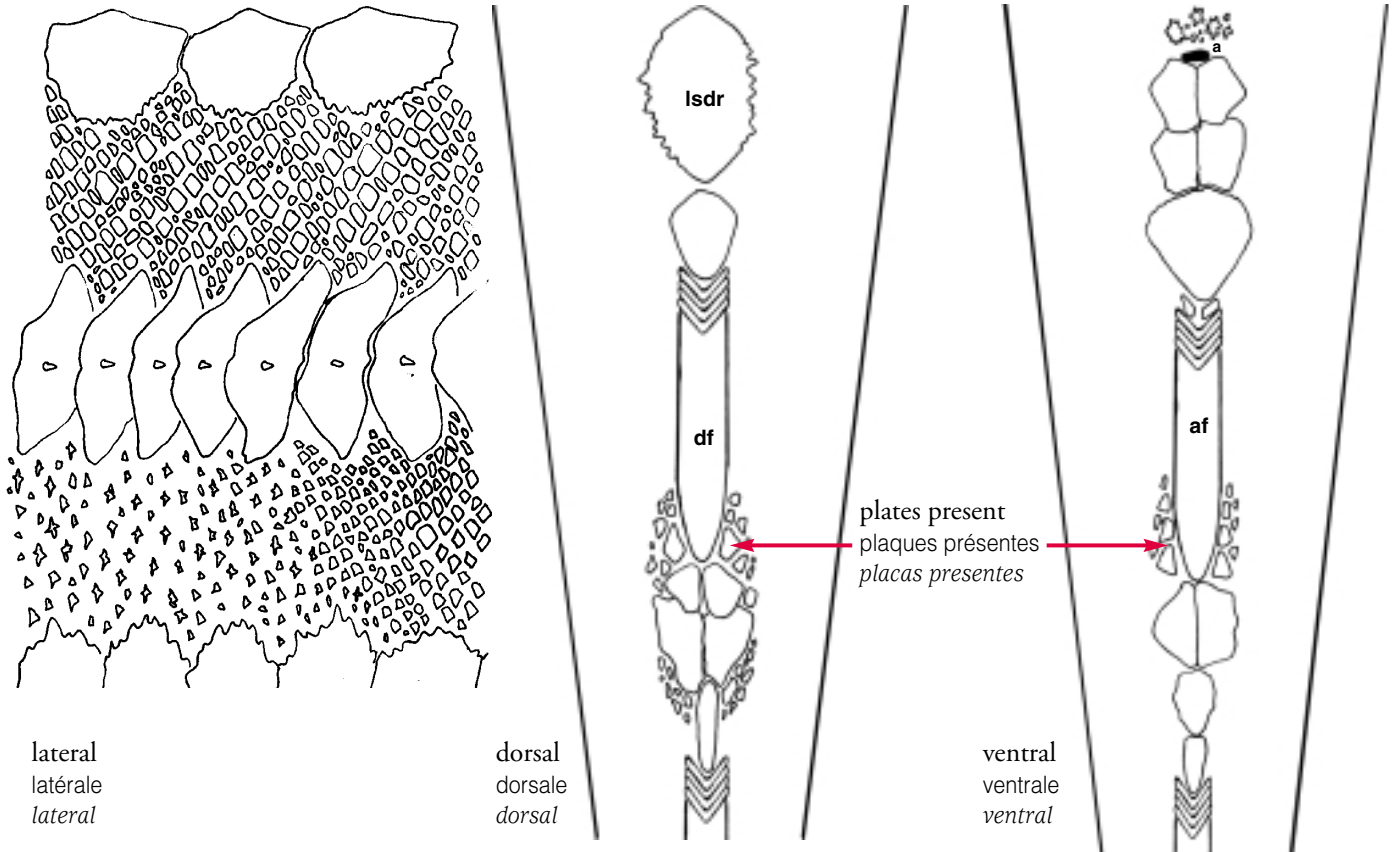
rhombic platelets
plaquettes rhombiques
placas rómbicas

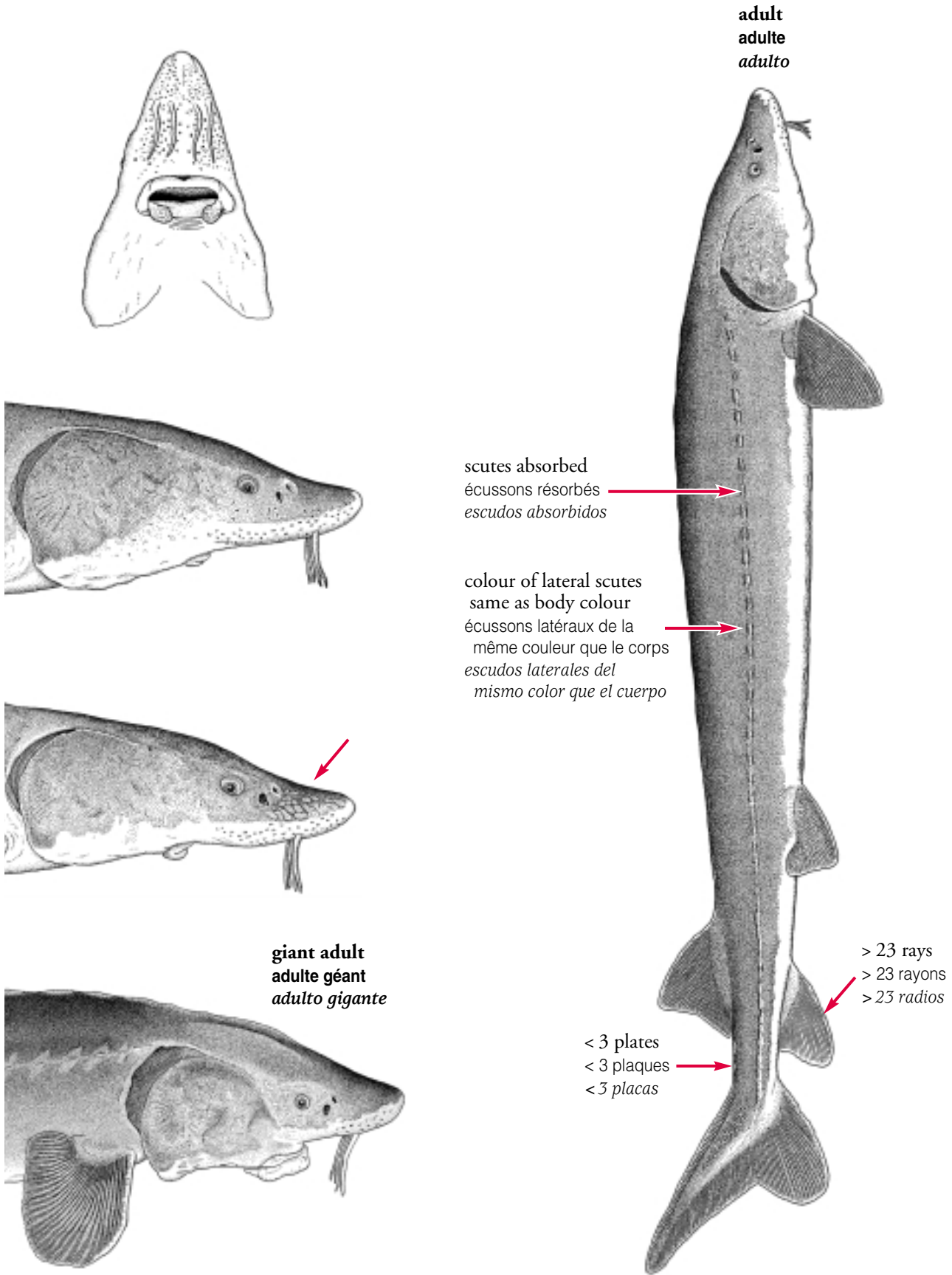


plates along anal fin
plaques à la base
de la nageoire anale
placas a lo largo de
la base de la aleta anal



 **Acipenser oxyrinchus**



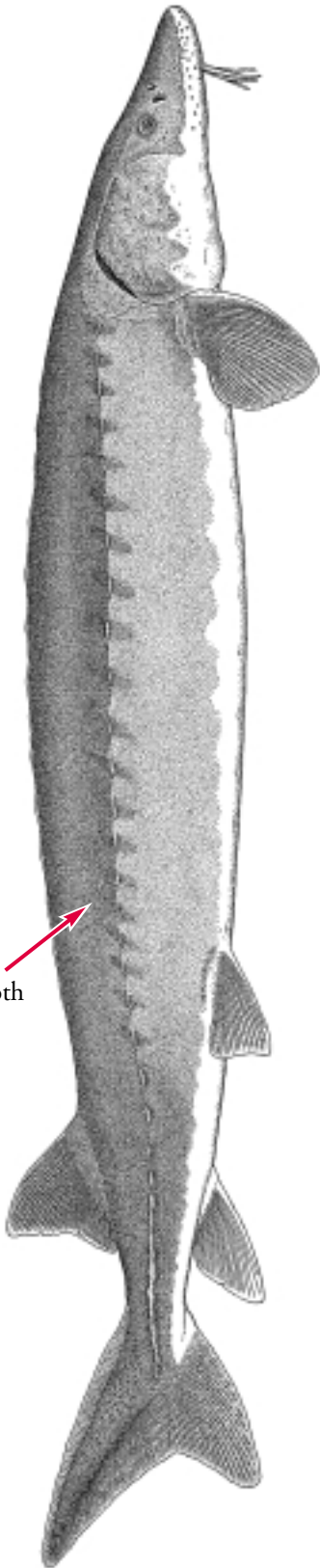


Similar species / Espèces semblables / Especies semejantes : *A. brevirostrum* 19 , *A. naccarii* 26

adult, > 100 cm
adulte, > 100 cm
adulto, > 100 cm

sub-adult, 30-100 cm
sub-adulte, 30-100 cm
sub-adulto, 30-100 cm

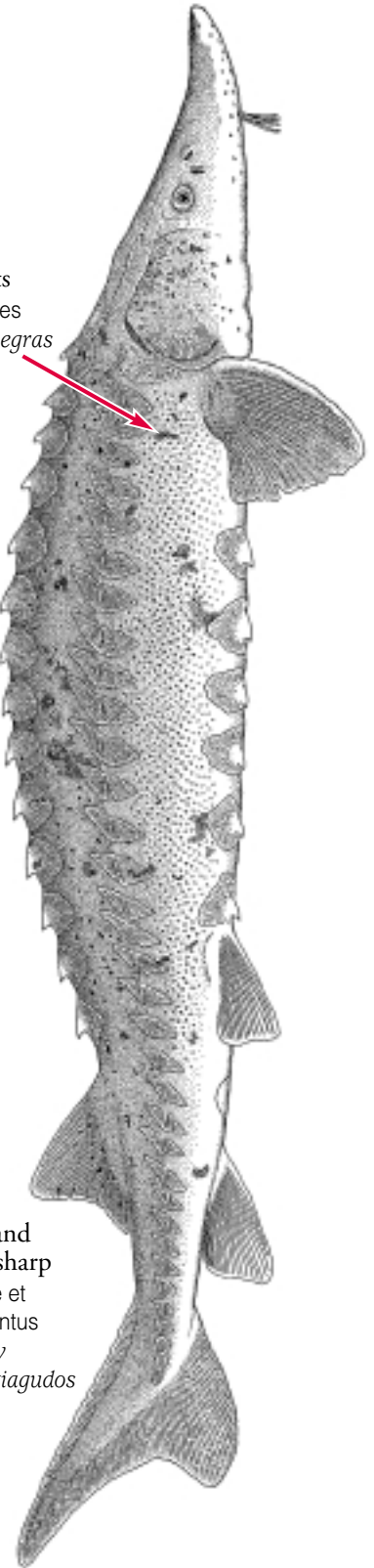
juvenile, 5-30 cm
juvénile, 5-30 cm
joven, 5-30 cm



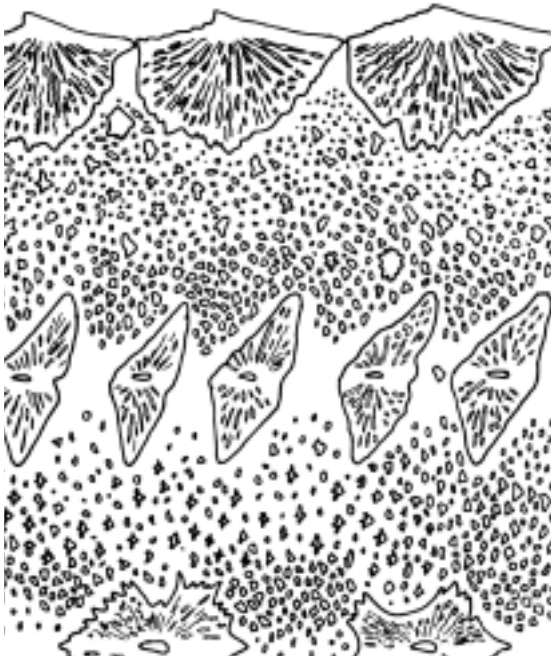
skin smooth
peau lisse
piel liso



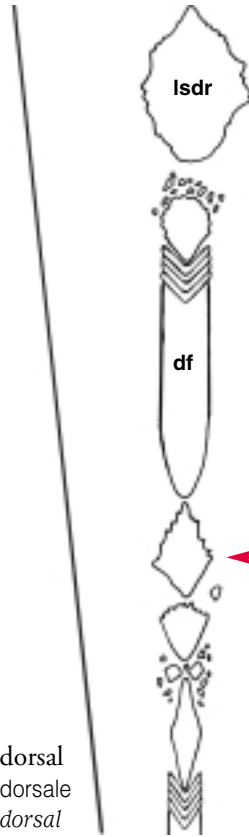
black spots
taches noires
manchas negras



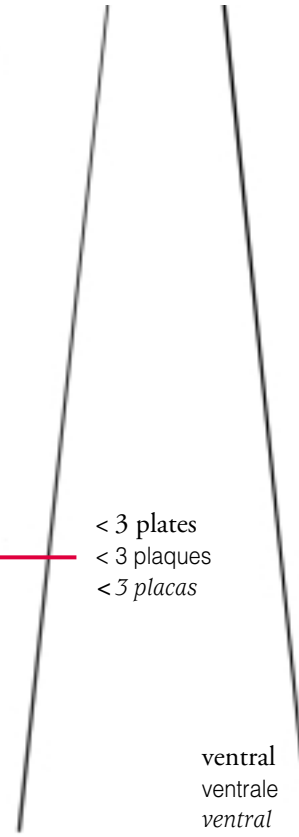
skin prickly and
scutes very sharp
peau épineuse et
écussons pointus
piel espinoso y
escudos puntiagudos



lateral
latérale
lateral

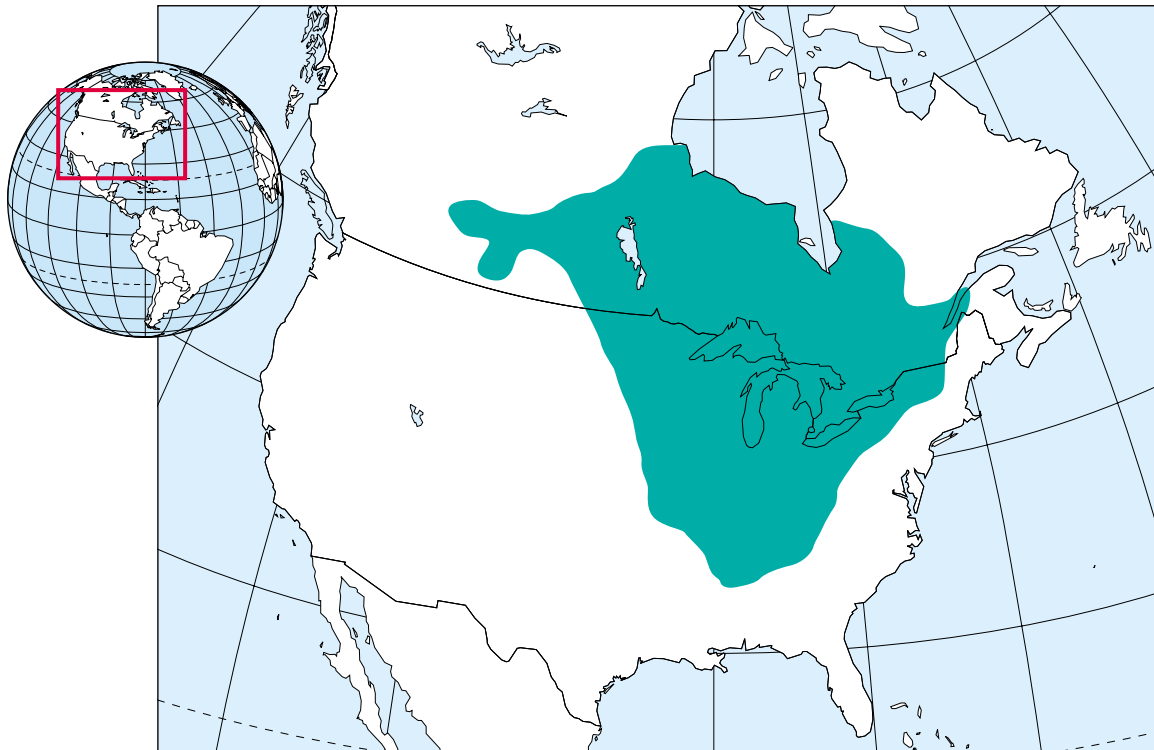


dorsal
dorsale
dorsal

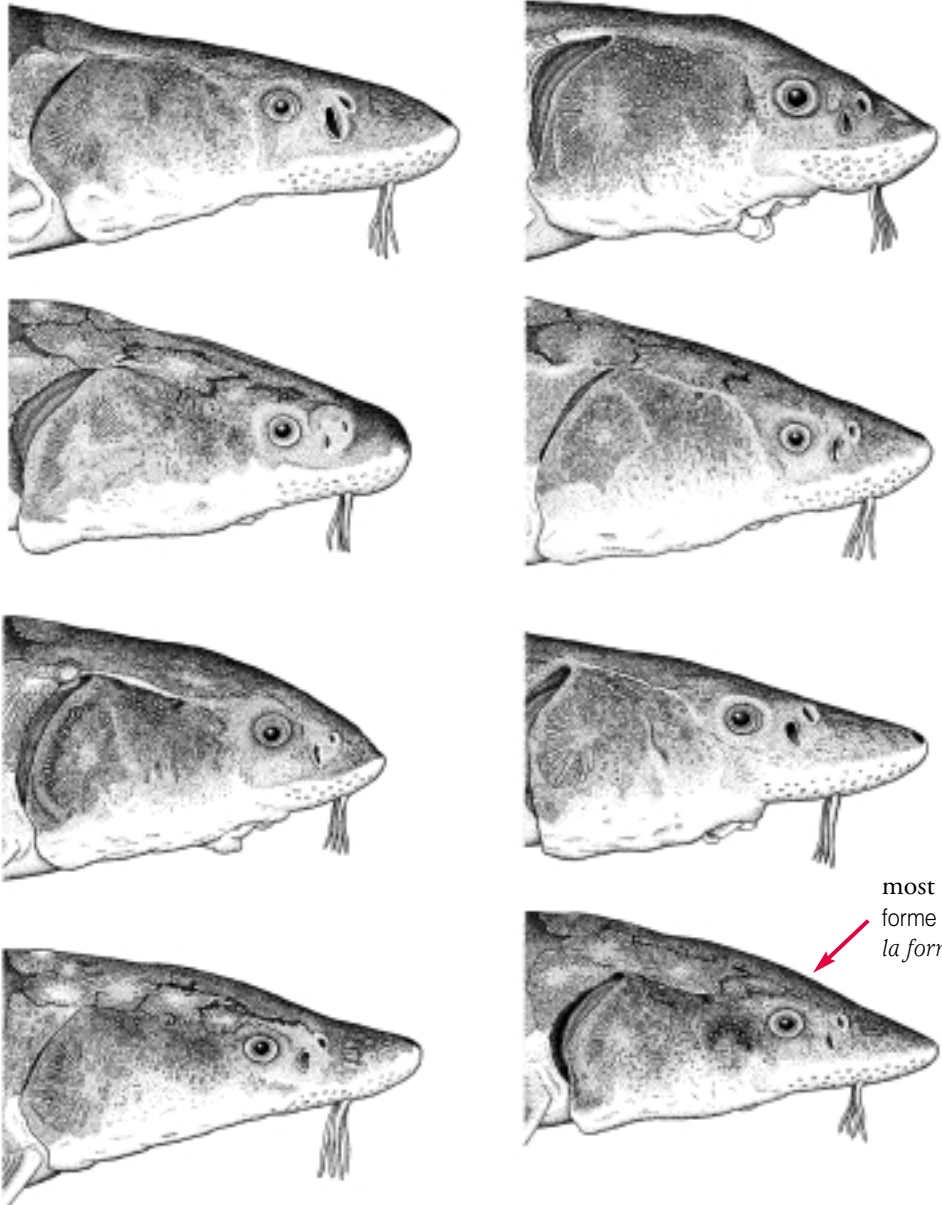


ventral
ventrale
ventral

< 3 plates
< 3 plaques
< 3 placas




adult head variations
variations de la tête
chez les adultes
variaciones de la
cabeza en los adultos

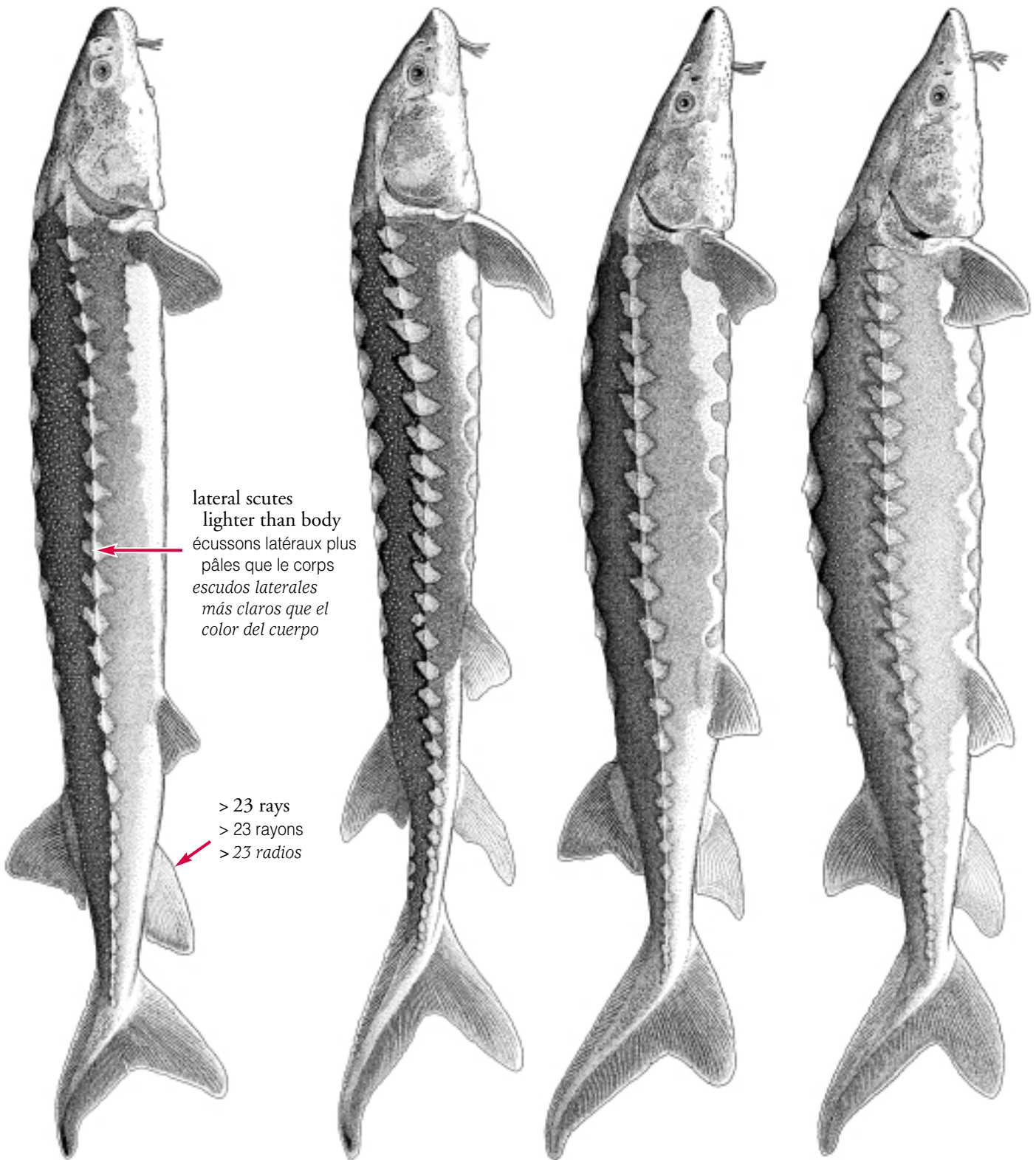


most common form
forme la plus commune
la forma más común



 **Acipenser brevirostrum**

adults, 90 cm or less
adultes, 90 cm ou moins
adultos, 90 cm o menos



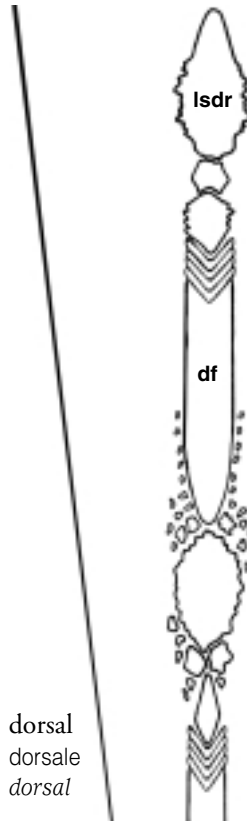
lateral scutes
lighter than body
écussons latéraux plus
pâles que le corps
escudos laterales
más claros que el
color del cuerpo

> 23 rays
> 23 rayons
> 23 radios

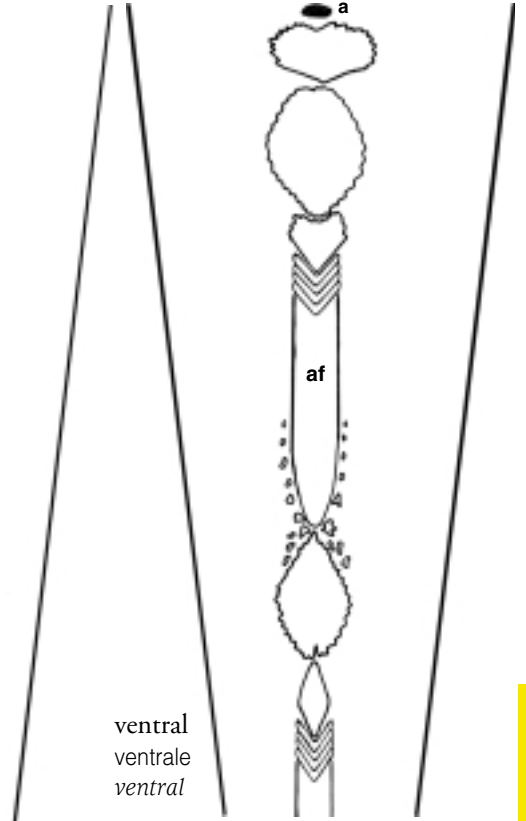
Similar species / Espèces semblables / Especies semejantes : *A. fulvescens* 16, *A. naccarii* 26



lateral
latérale
lateral



dorsal
dorsale
dorsal



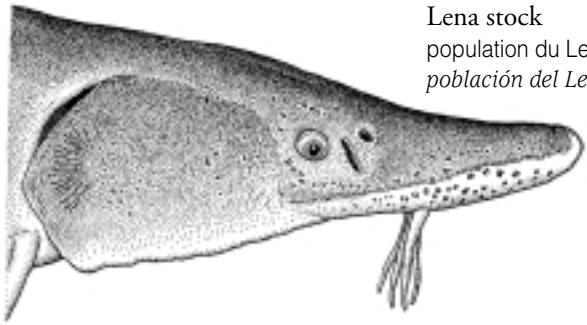
ventral
ventrale
ventral



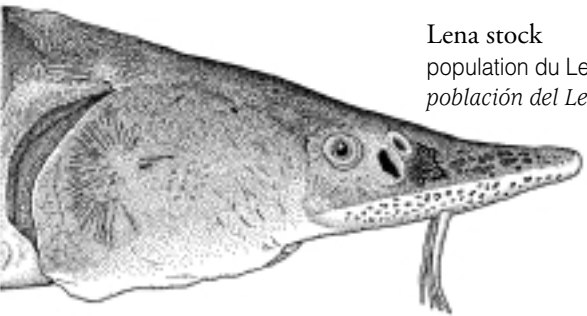
adult, 110 cm
adulte, 110 cm
adulto, 110 cm



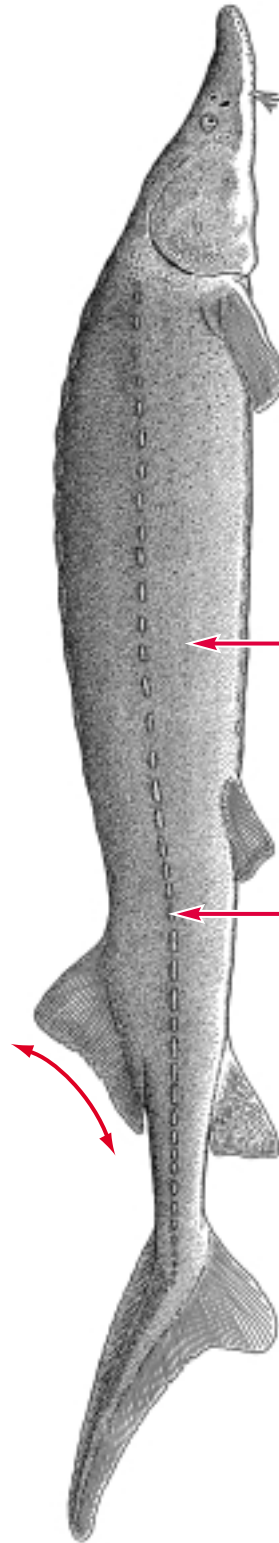
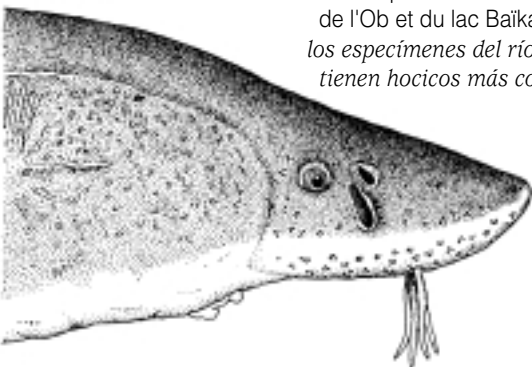
Lena stock
population du Lena
población del Lena



Lena stock
population du Lena
población del Lena



Ob River and Lake Baikal stock
with a shorter snout
museau plus court chez les individus
de l'Ob et du lac Baïkal
los especímenes del río Ob y lago Baikal
tienen hocicos más cortos



denticles absorbed on
larger specimens
denticules résorbés chez
les gros spécimens
absorción de los denticulos
en los especímenes más
grandes

lateral scutes absorbed
or same color as body
écussons latéraux résorbés
ou de la même couleur
que le corps
escudos laterales absorbidos
o del mismo color
que el cuerpo

sub-adult, 90 cm
sub-adulte, 90 cm
sub-adulto, 90 cm

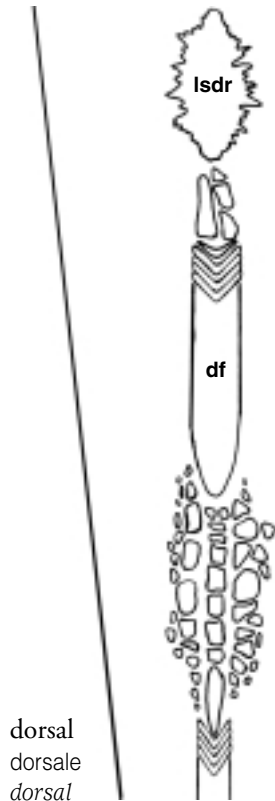


juvenile, 47 cm
juvénile, 47 cm
joven, 47 cm

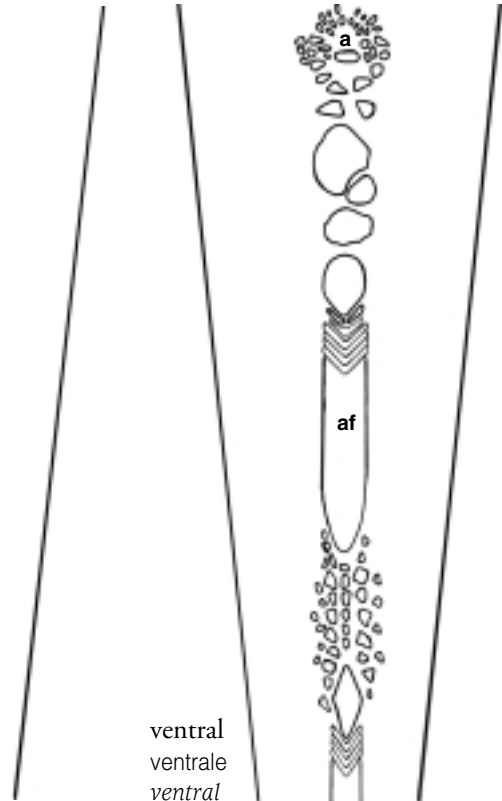




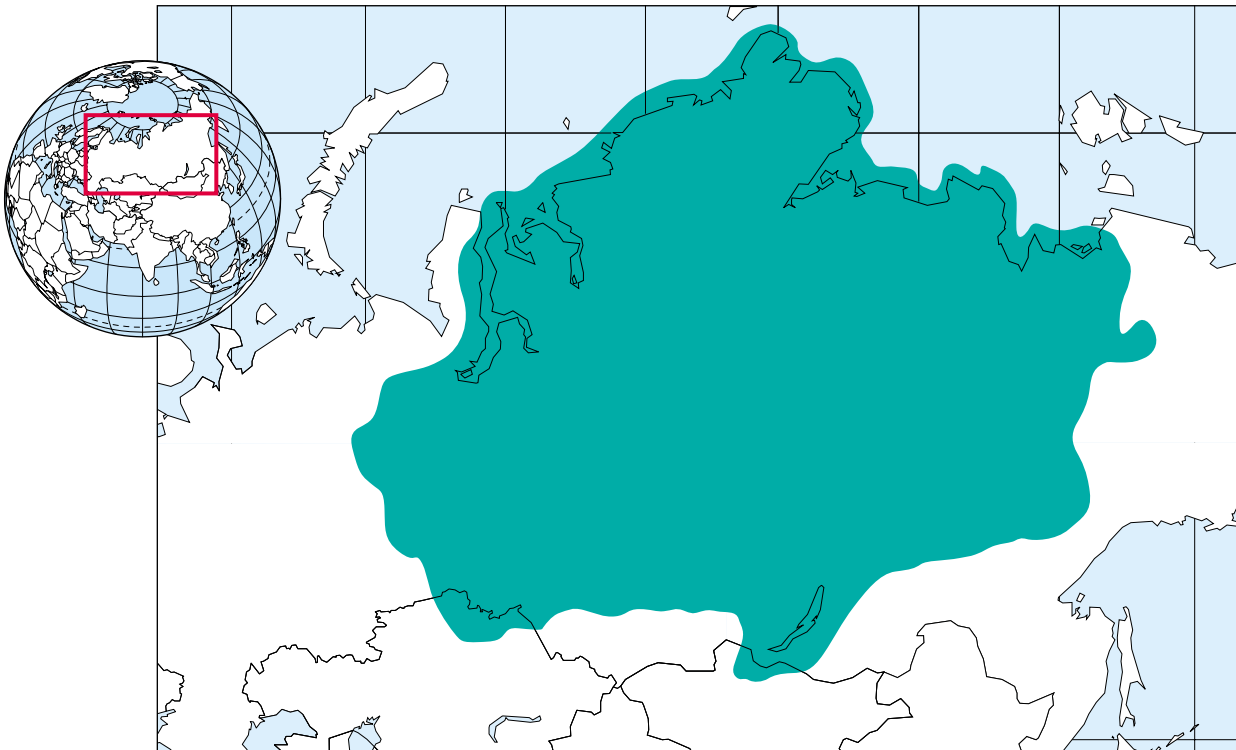
lateral
latérale
lateral



dorsal
dorsale
dorsal



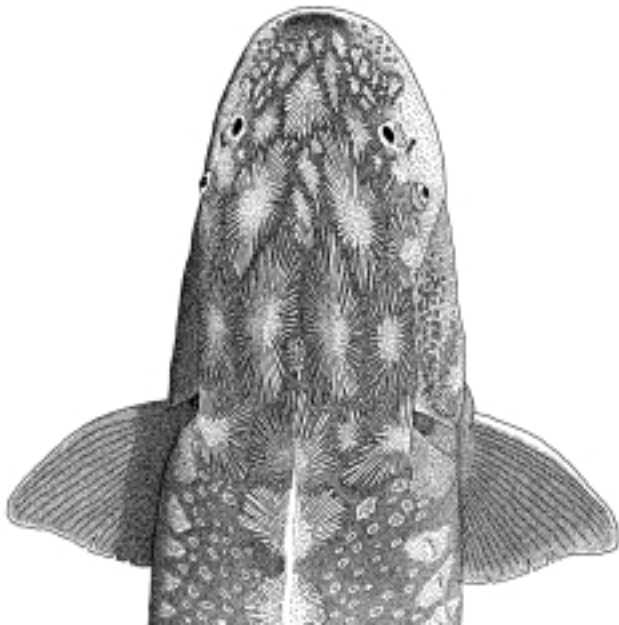
ventral
ventrale
ventral



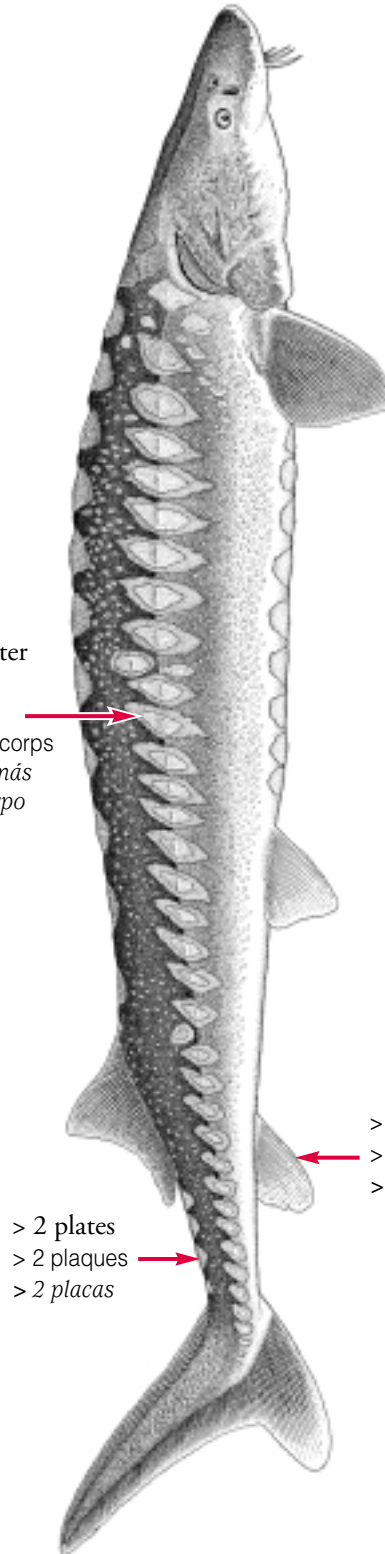
adult, 180 cm
adulte, 180 cm
adulto, 180 cm



rounded wide snout
museau arrondi et large
hocico redondeado y ancho



lateral scutes lighter
than body
écussons latéraux
plus pâles que le corps
escudos laterales más
claros que el cuerpo



> 2 plates
> 2 plaques
> 2 placas

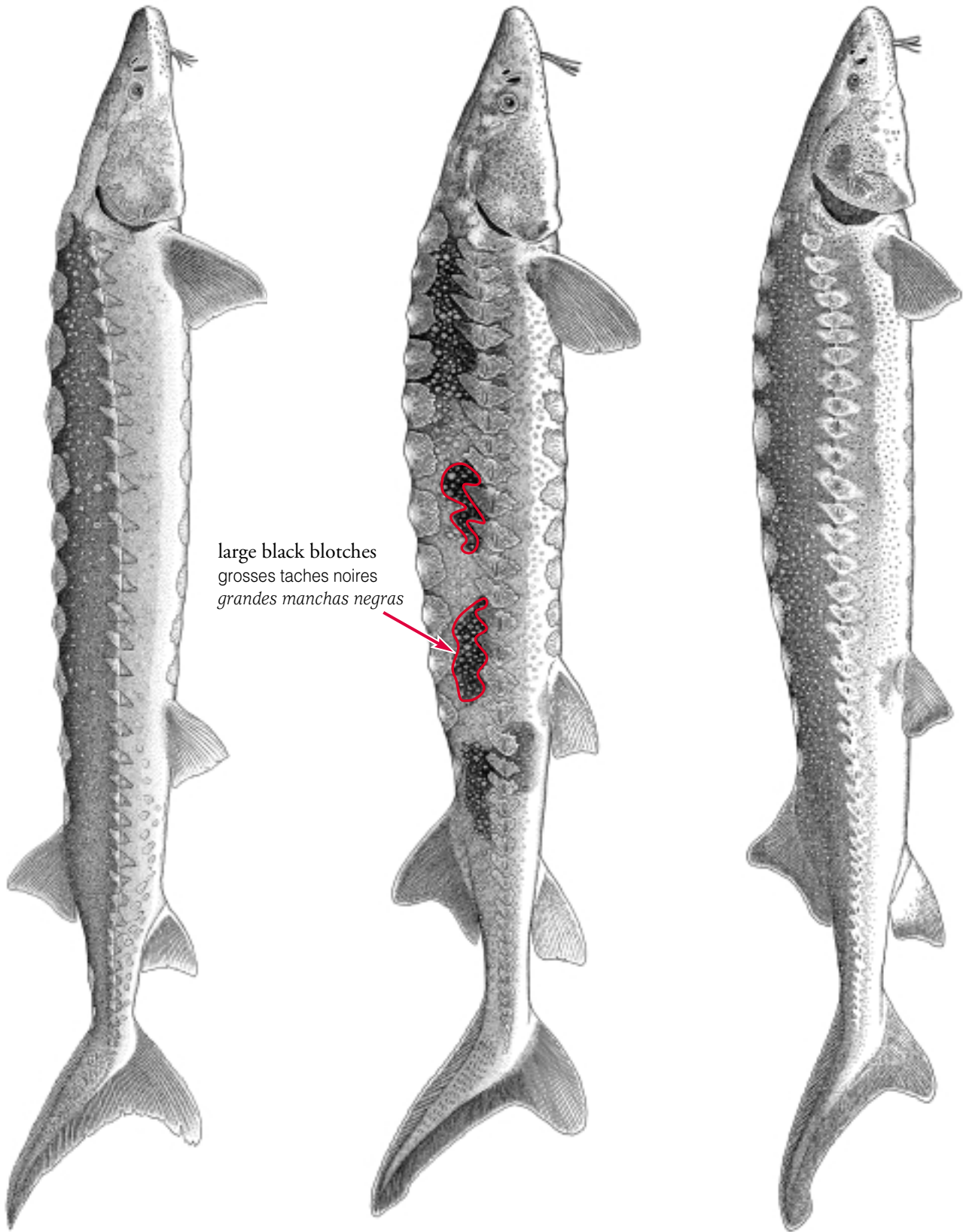
> 23 rays
> 23 rayons
> 23 radios

Similar species / Espèces semblables / Especies semejantes : *A. fulvescens* 16, *A. brevirostrum* 19, *A. gueldenstaedtii* 29, *A. persicus* 34

juvenile, Albanian stock
juvénile, stock Albanien
joven, población Albania

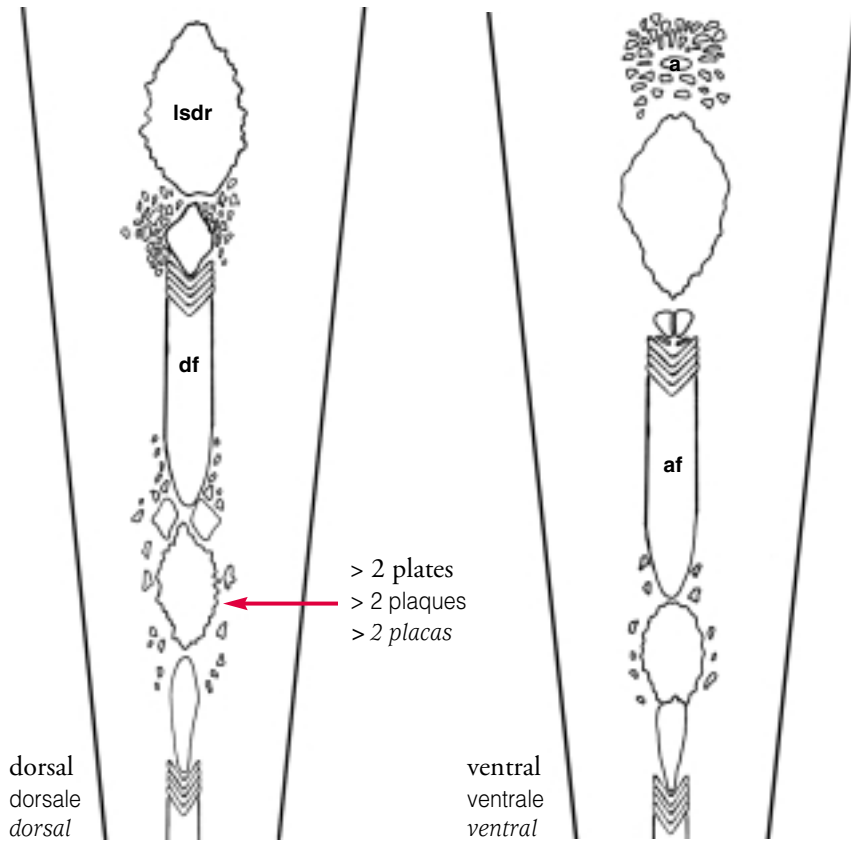
juvenile, 40 cm
juvénile, 40 cm
joven, 40 cm

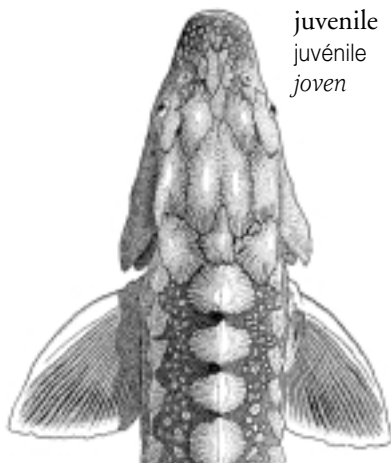
sub-adult, 90 cm
sub-adulte, 90 cm
sub-adulto, 90 cm



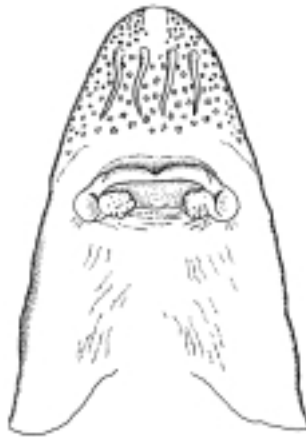


lateral
latérale
lateral





juvenile
juvénile
joven

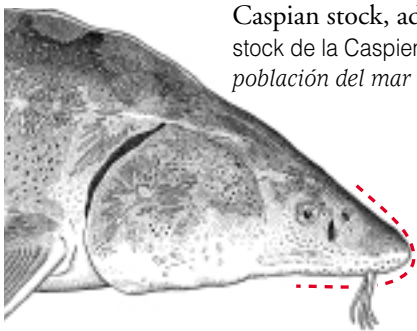


similar species / espèce semblable / especie semejante

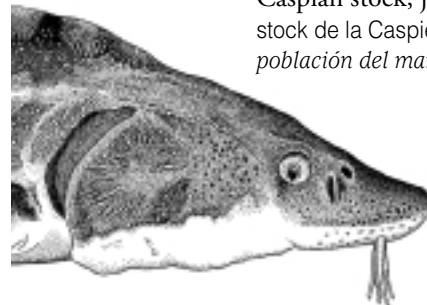
A. persicus **34**



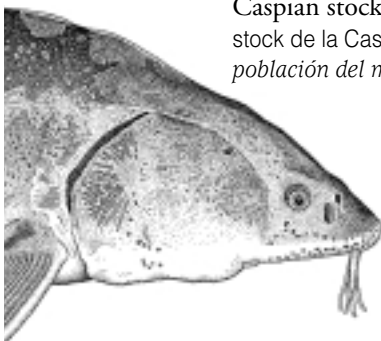
more elongated
plus allongé
más largo



Caspian stock, adult
stock de la Caspienne, adulte
población del mar Caspio, adulto



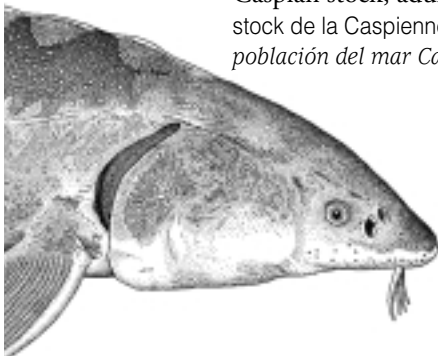
Caspian stock, juvenile
stock de la Caspienne, juvénile
población del mar Caspio, joven



Caspian stock, adult
stock de la Caspienne, adulte
población del mar Caspio, adulto




Caspian stock, juvenile
stock de la Caspienne, juvénile
población del mar Caspio, joven



Caspian stock, adult
stock de la Caspienne, adulte
población del mar Caspio, adulto



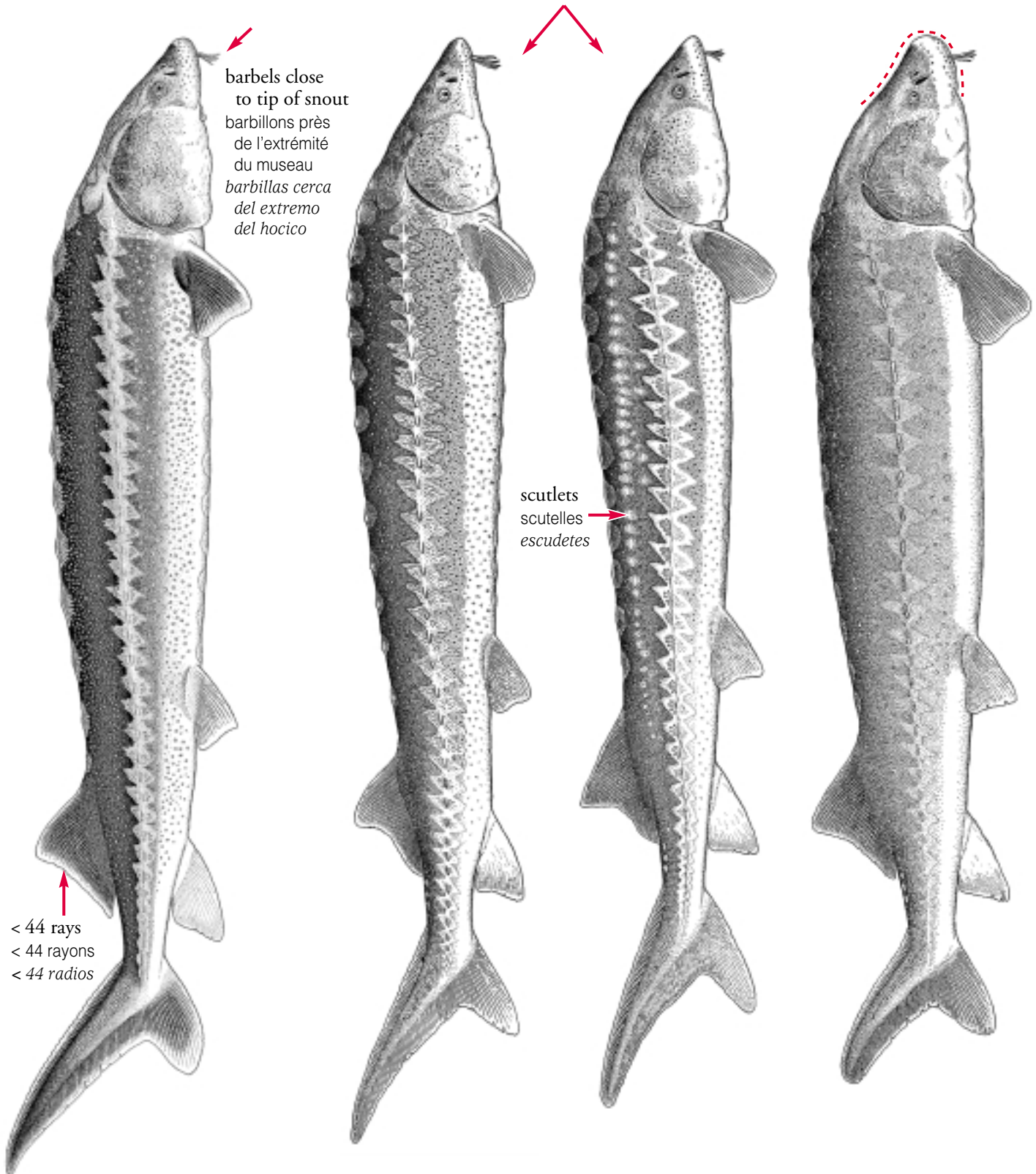
Azov stock, adult
stock de la mer d'Azov, adulte
población del mar Azov, adulto

 **Acipenser gueldenstaedtii**

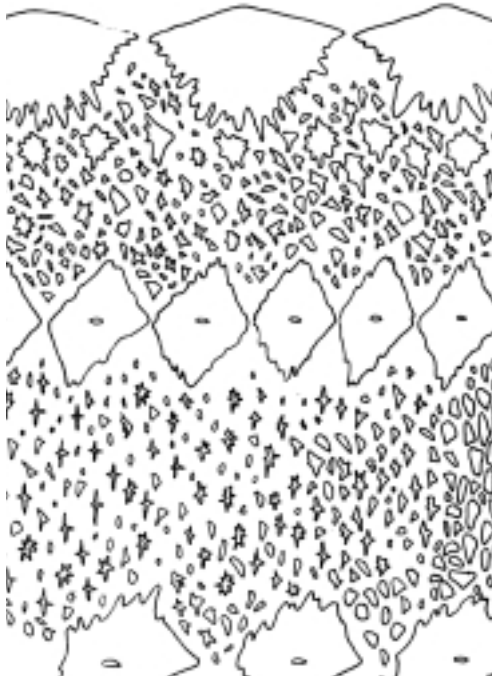
adult 146 cm, Danube stock
adulte 146 cm, stock du Danube
adulto 146 cm, población del Danubio

adult, Caspian stock
adultes, stock de la Caspienne
adultos, población del mar Caspio

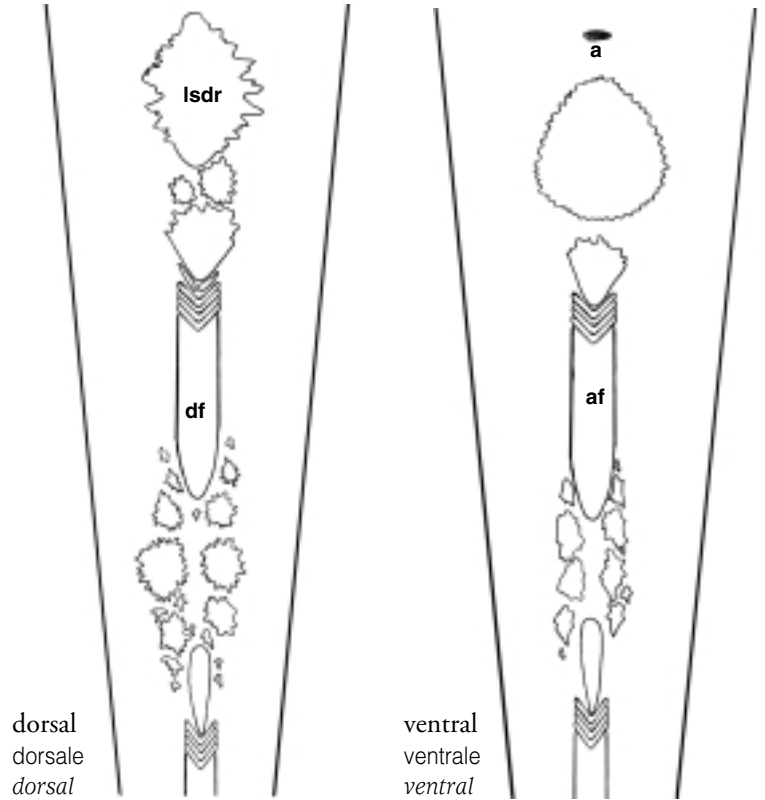
adult, Azov stock
adulte, stock de la mer d'Azov
adulto, población del mar Azov



Similar species / Espèces semblables / Especies semejantes : *A. persicus* 34, *A. dabryanus* 38, *A. sinensis* 40

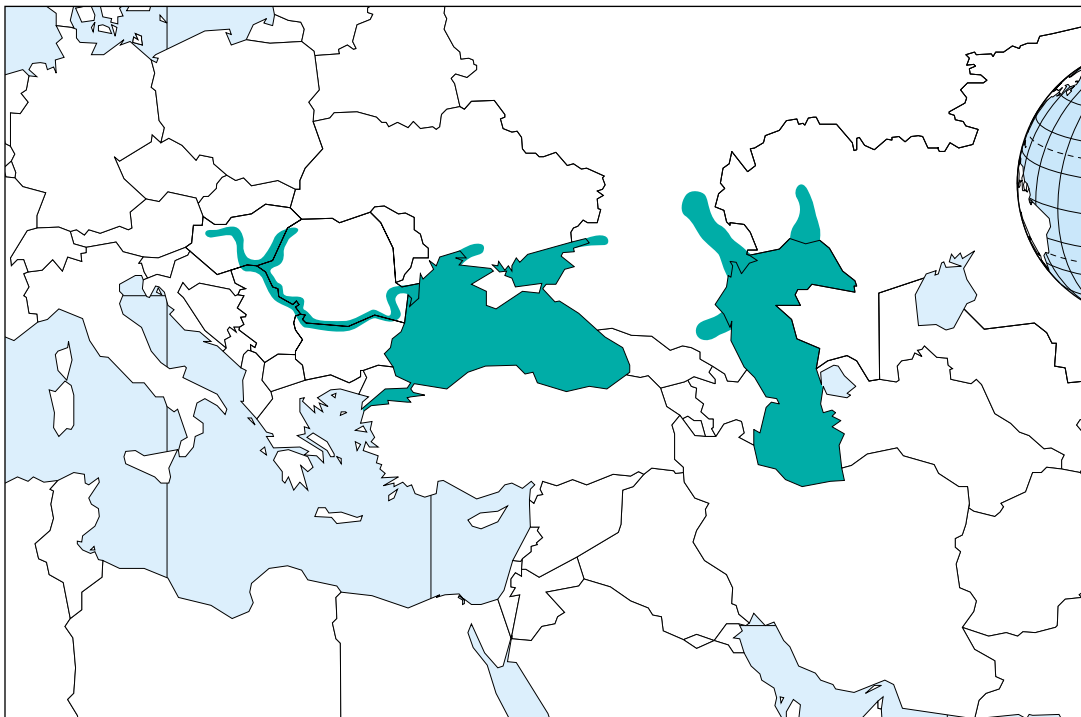


lateral
latérale
lateral



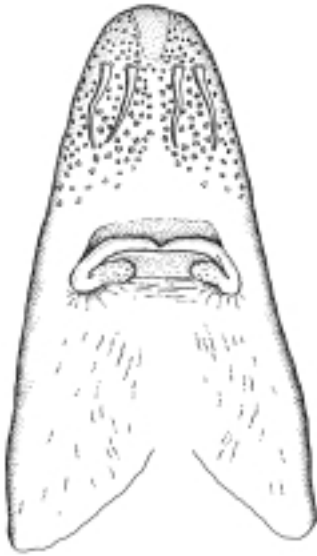
dorsal
dorsale
dorsal

ventral
ventrale
ventral

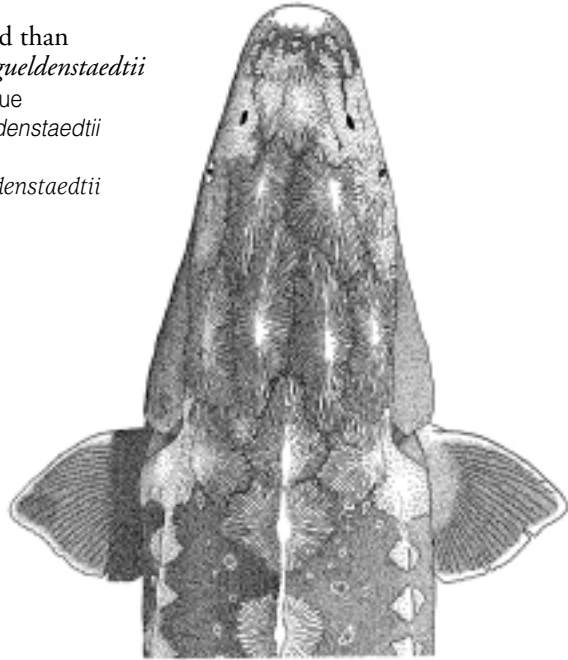




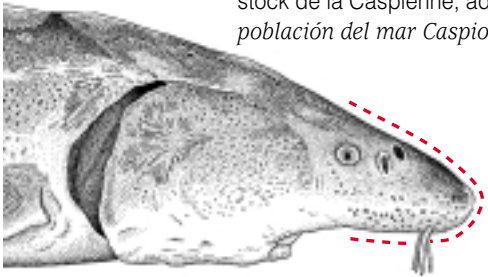




snout more elongated than
A. naccarii and *A. gueldenstaedtii*
museau plus allongé que
A. naccarii et *A. gueldenstaedtii*
hocico más largo que
A. naccarii y *A. gueldenstaedtii*



Caspian stock, adult
stock de la Caspienne, adulte
población del mar Caspio, adulto



Caspian stock, adult
stock de la Caspienne, adulte
población del mar Caspio, adulto



Caspian stock, adult
stock de la Caspienne, adulte
población del mar Caspio, adulto



Similar species / Espèces semblables / Especies semejantes : *A. gueldenstaedtii* 29, *A. dabryanus* 38, *A. sinensis* 40

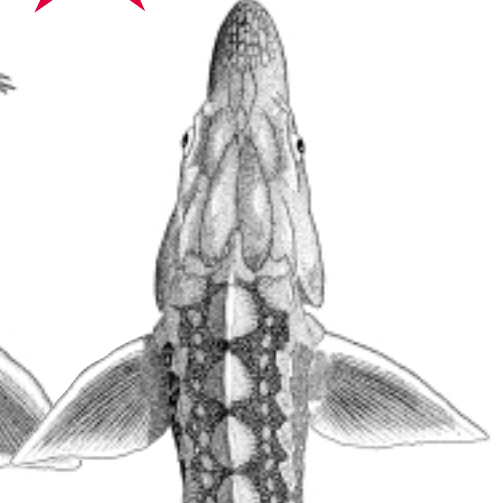
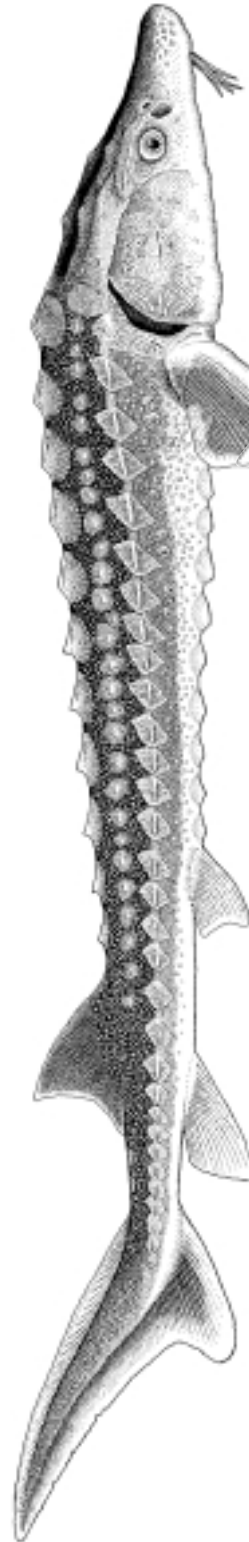
adult, Caspian stock
adulte, stock de la Caspienne
adulto, población del mar Caspio

juvenile, 54 cm
juvénile, 54 cm
joven, 54 cm


160 cm

155 cm

barbels close
to tip of snout
barbillons près
de l'extrémité
du museau
barbillas cerca
del extremo
del hocico





< 44 rays
< 44 rayons
< 44 radios



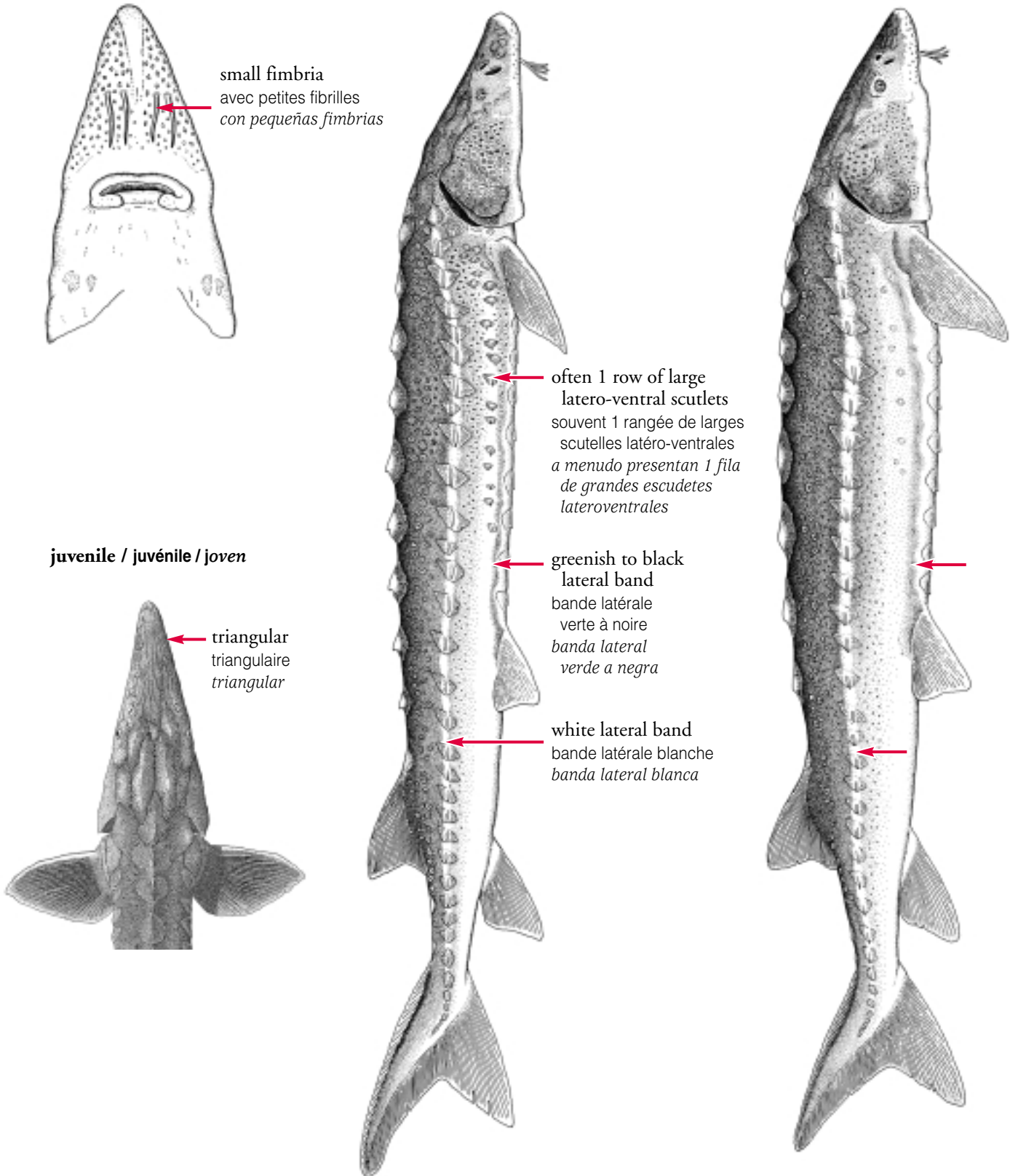
juvenile
juvénile
joven


similar species/
espèce semblable/
especie semejante:
A. gueldenstaedtii 29

 **Acipenser medirostris**

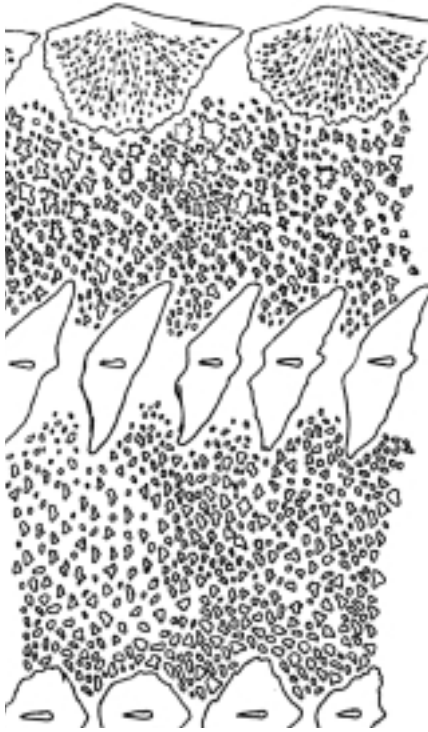
 **Acipenser mikadoi**

Note: identification between *A. medirostris* and *A. mikadoi* can only be determined by genetic analysis.
Note : *A. medirostris* et *A. mikadoi* ne peuvent être distingués que par l'analyse de leurs caractéristiques génétiques.
Nota: las especies *A. medirostris* y *A. mikadoi* sólo se pueden distinguir mediante análisis genético.

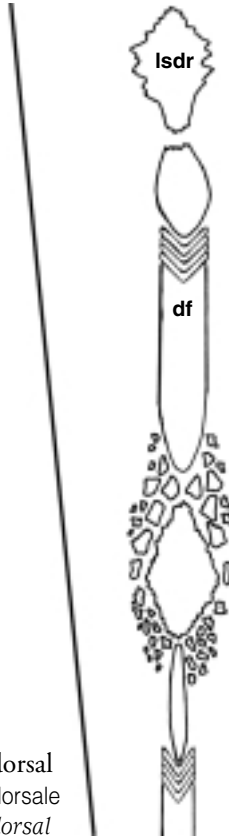


 *Acipenser medirostris*

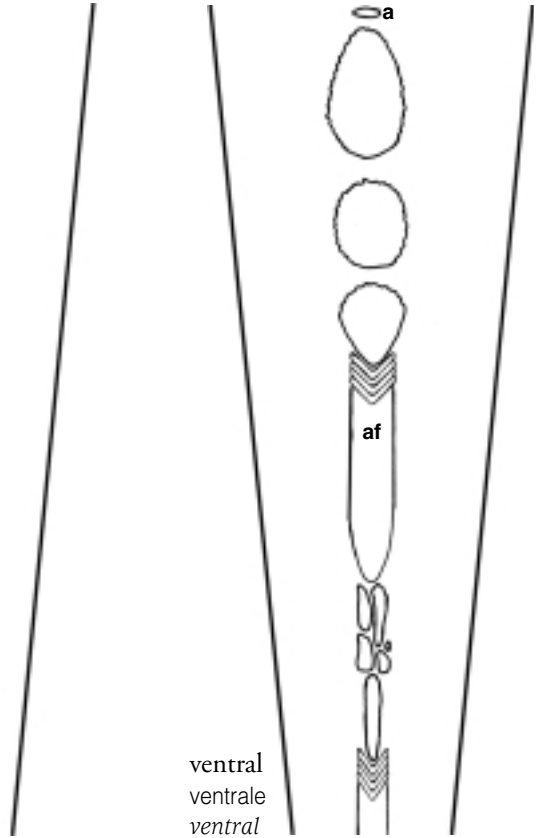
 *Acipenser mikadoi*



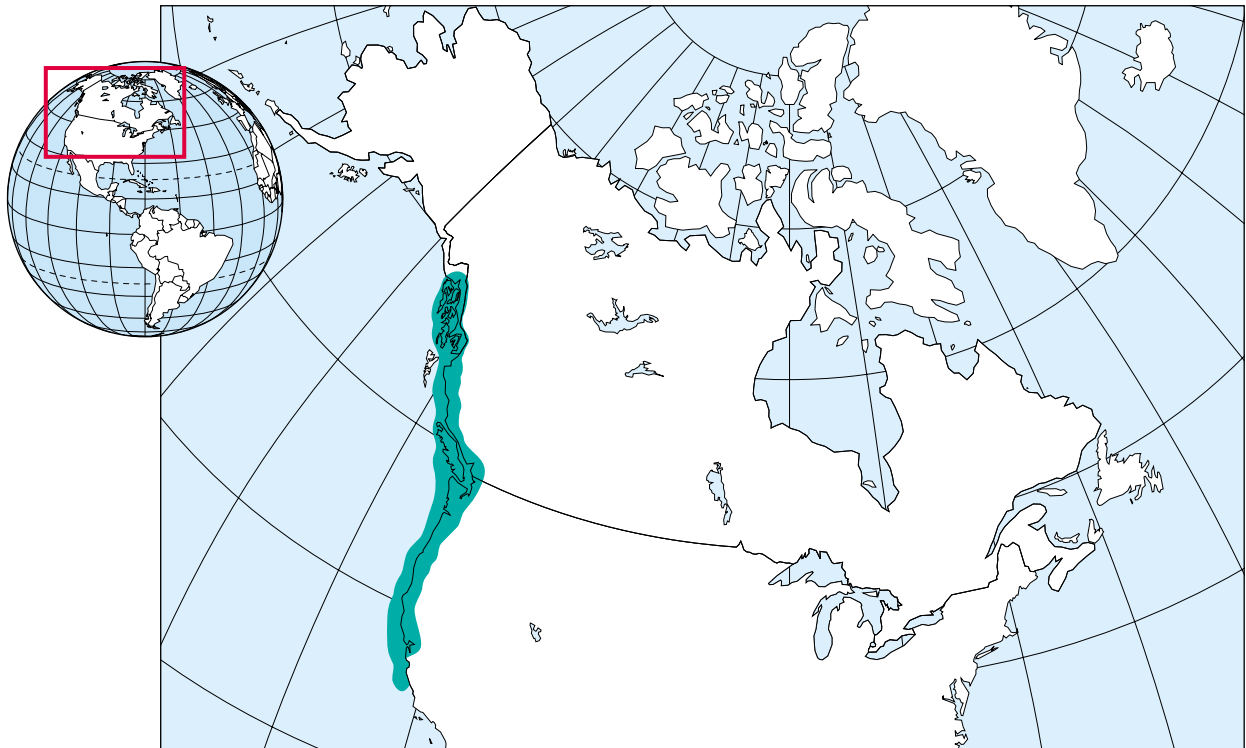
lateral
latérale
lateral




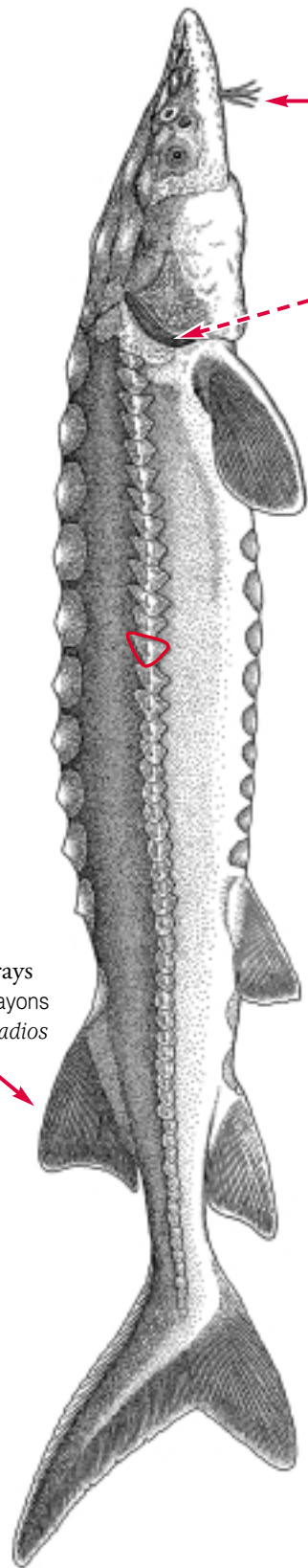
dorsal
dorsale
dorsal



ventral
ventrale
ventral



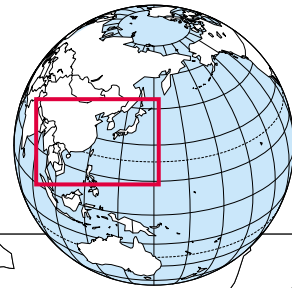
 **Acipenser dabryanus**




barbels close to mouth
barbillons près de la bouche
barbillas más cerca de la boca

> 29 gill rakers
> 29 branchicténies
> 29 *branquispinas*

> 44 rays
> 44 rayons
> 44 radios



Similar species / Espèces semblables / Especies semejantes : *A. gueldenstaedtii* 29, *A. persicus* 34, *A. sinensis* 40

 **Acipenser sinensis**

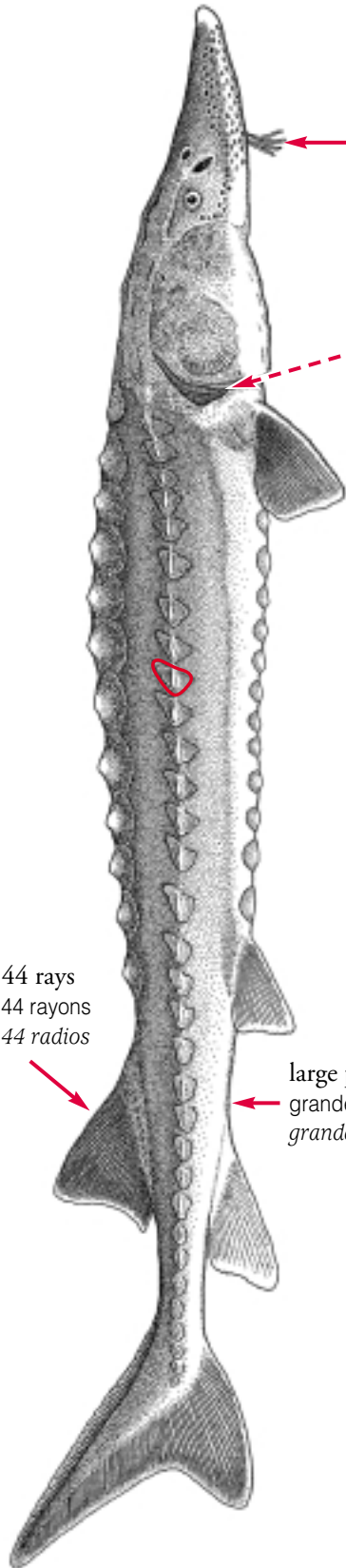


small barbels close to the mouth
petits barbillons près de la bouche
pequeñas barbillas más cerca de la boca

< 30 gill rakers
< 30 branchicténies
< 30 branquispinas

> 44 rays
> 44 rayons
> 44 radios

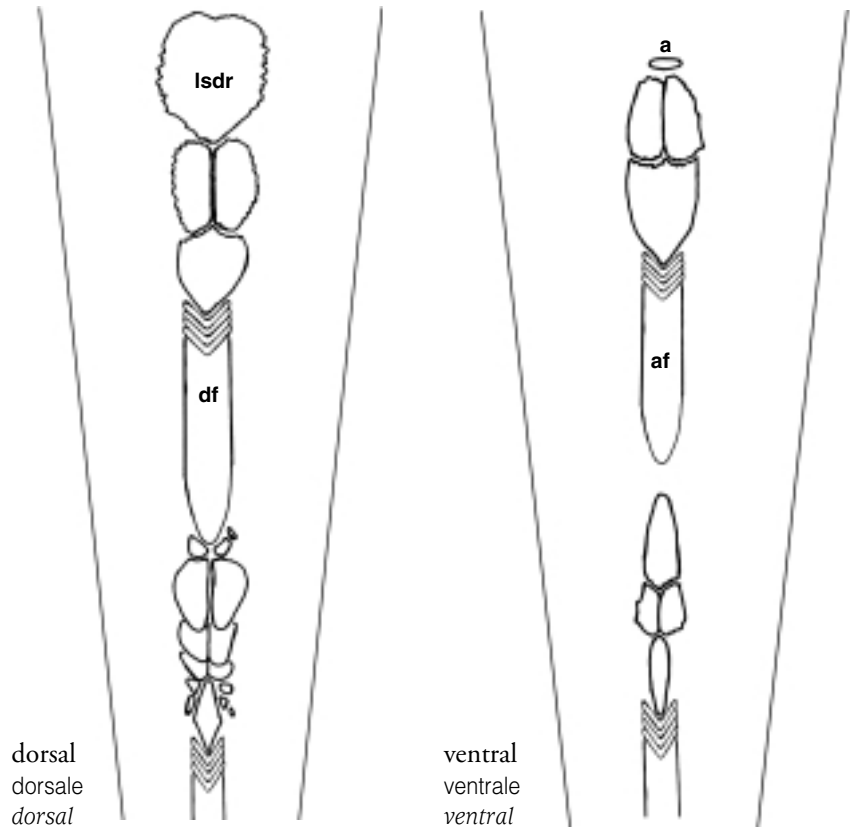
large plates
grandes plaques
grandes placas



Similar species / Espèces semblables / Especies semejantes : *A. gueldenstaedtii* 29, *A. persicus* 34, *A. dabryanus* 38

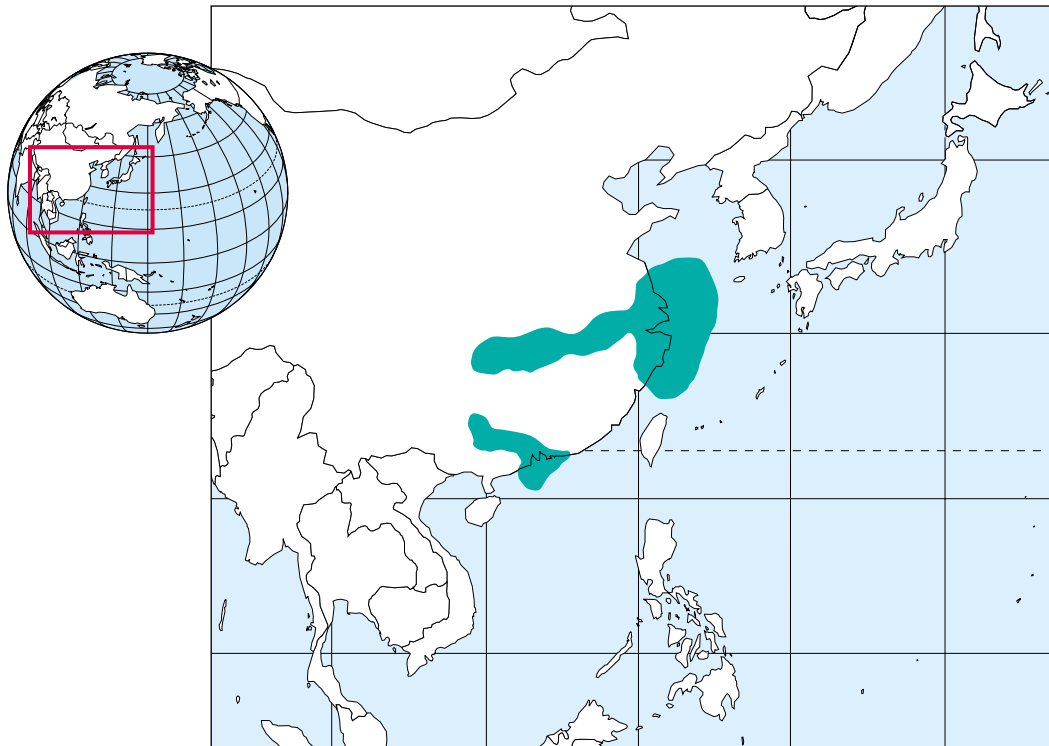


lateral
latérale
lateral



dorsal
dorsale
dorsal

ventral
ventrale
ventral

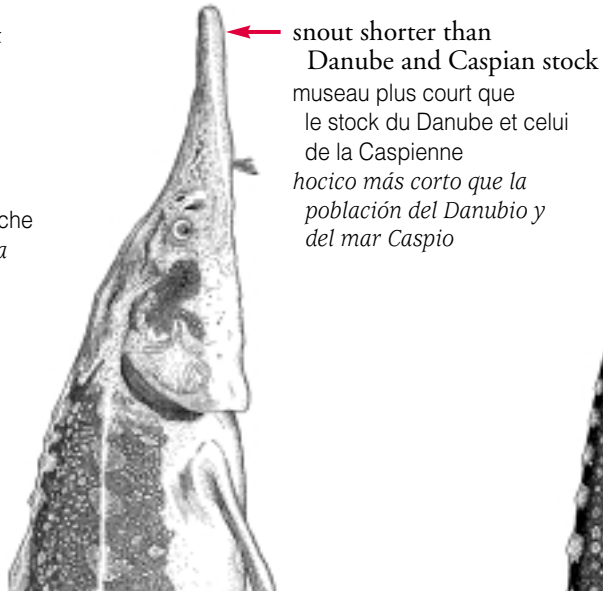
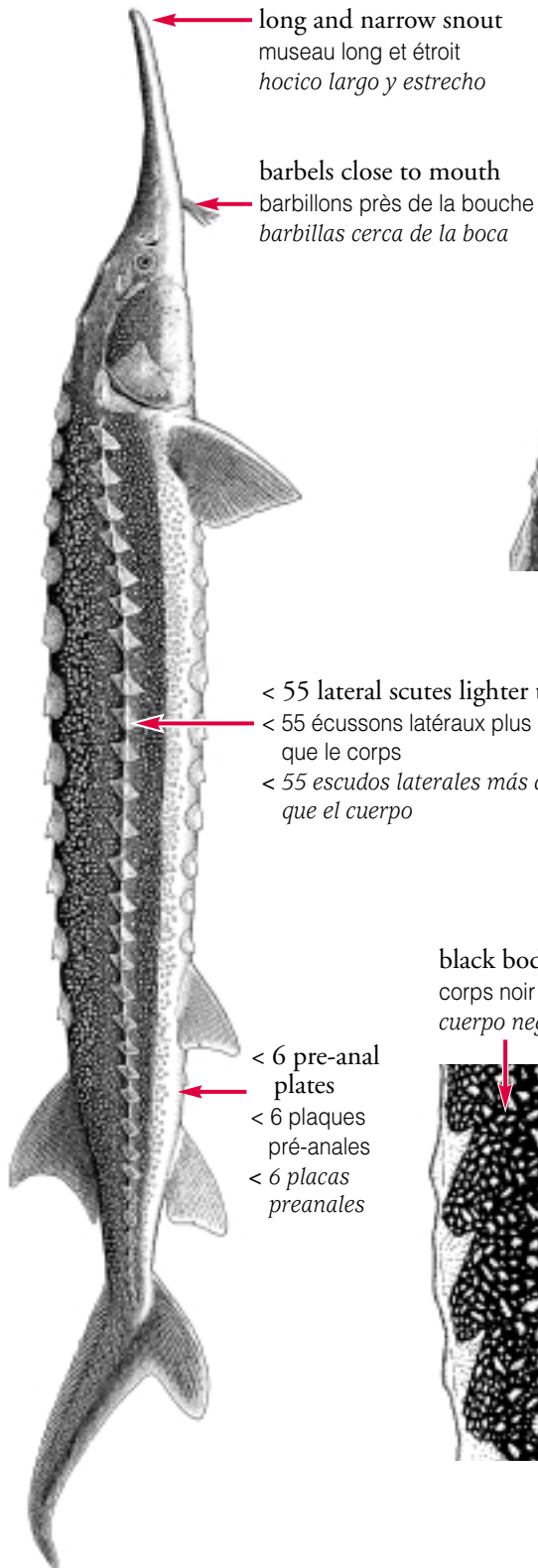




Danube stock
stock du Danube
población del Danubio

Azov stock
stock de la mer d'Azov
población del mar Azov

Caspian stock
stock de la Caspienne
población del mar Caspio

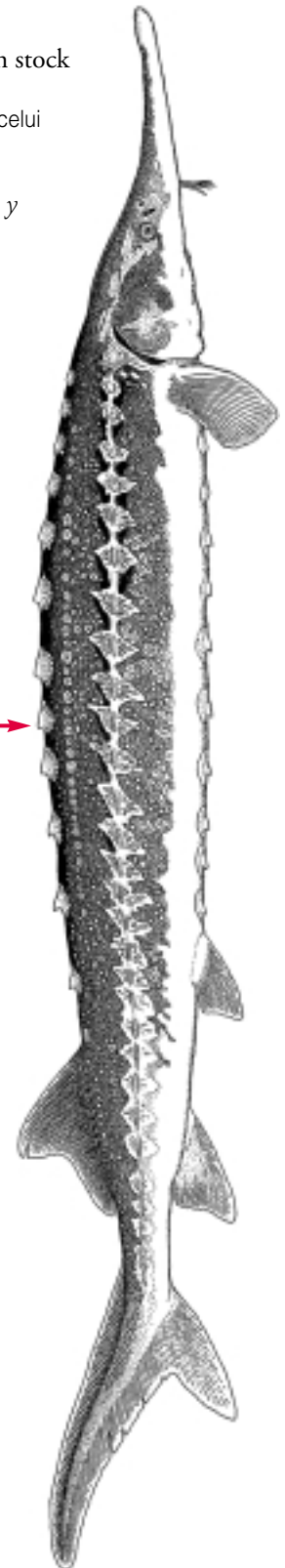


sharp hooks on dorsal and lateral scutes
crochets pointus sur les écussons dorsaux et latéraux
ganchos puntiagudos en los escudos dorsales y laterales

black body with white scutlets and denticles
corps noir avec scutelles et denticules blancs
cuerpo negro con escudetes y denticulos blancos

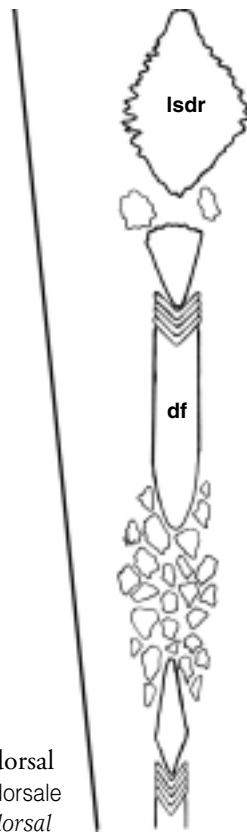


dorsal view
vue dorsale
vista dorsal

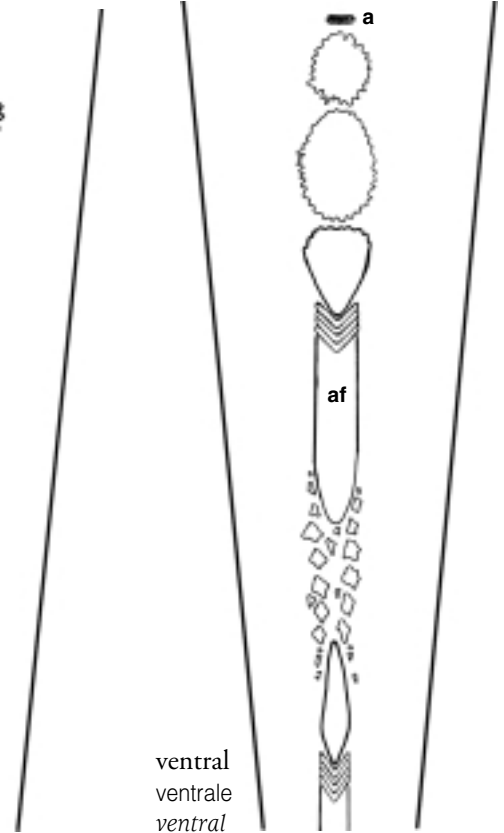




lateral
latérale
lateral



dorsal
dorsale
dorsal

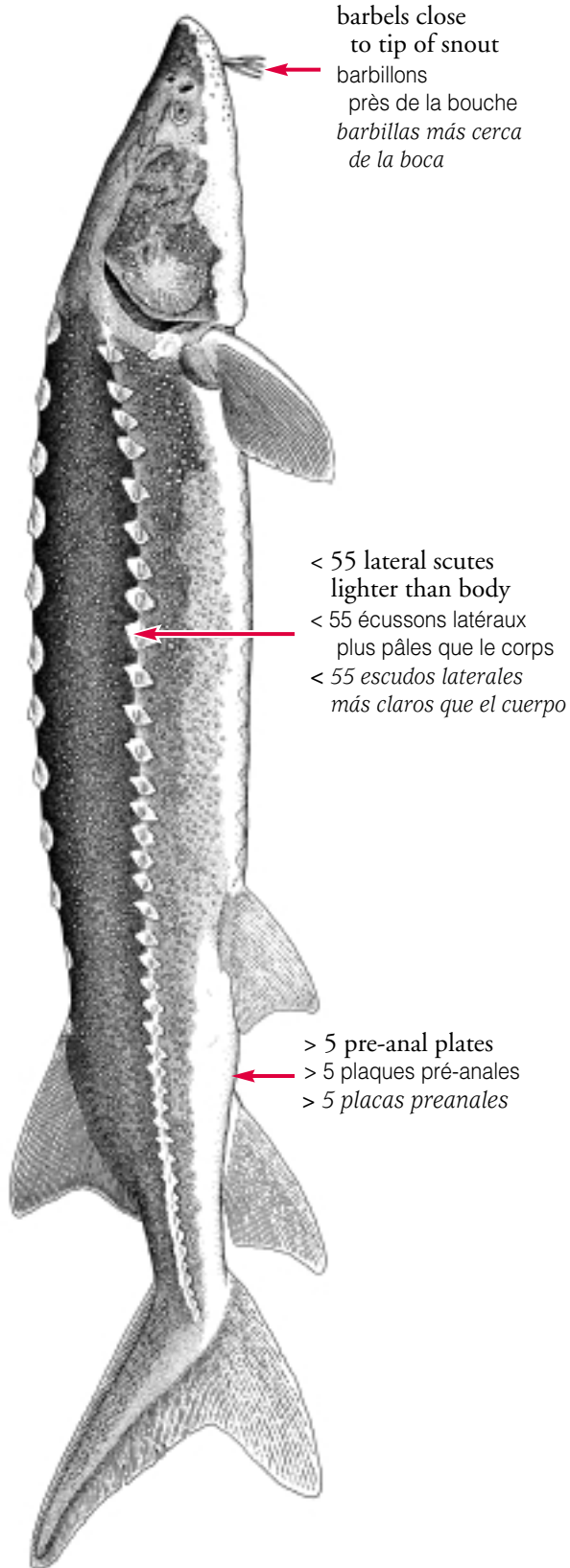



ventral
ventrale
ventral









 **Acipenser transmontanus**

