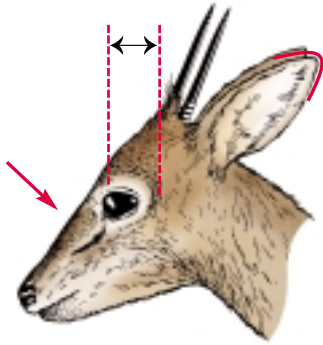
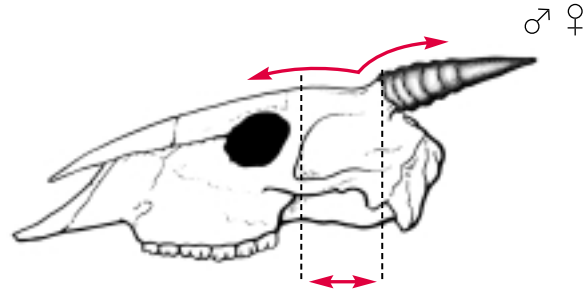




Cephalophus Spp.: ← 60 - 190 cm →, 35 - 87 cm



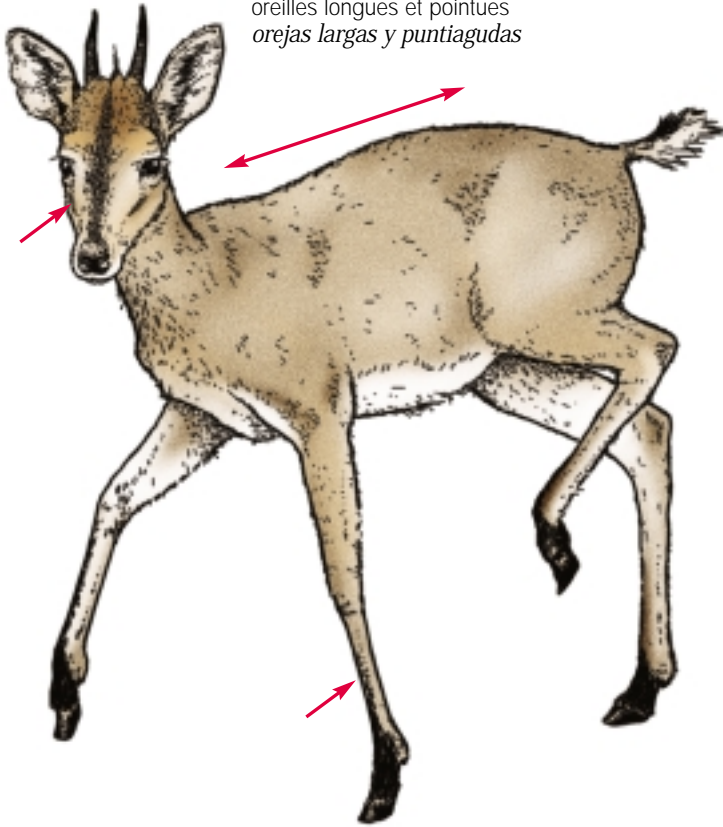
Sylvicapra grimmia



Cephalophus Spp. **60** → **62**

horns upright
cornes droites
cuernos rectos

pointed, long ears
oreilles longues et pointues
orejas largas y puntiagudas



← 70 - 115 cm → 45 - 70 cm

Sylvicapra grimmia



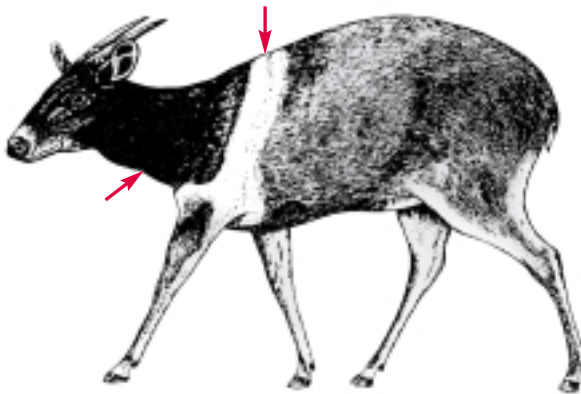


straight
droites
rectos

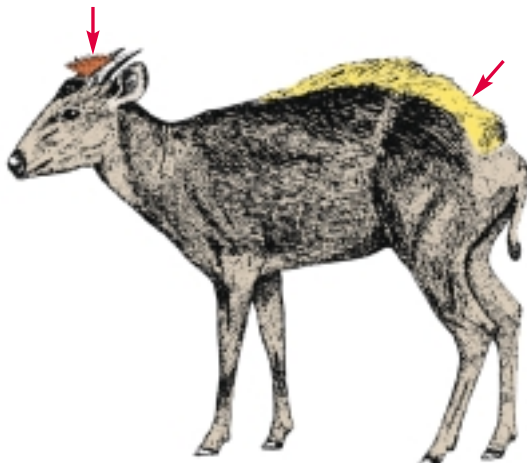
Duikers
Céphalophes
Duiqueros




 *Cephalophus zebra*



 *Cephalophus jentinki*



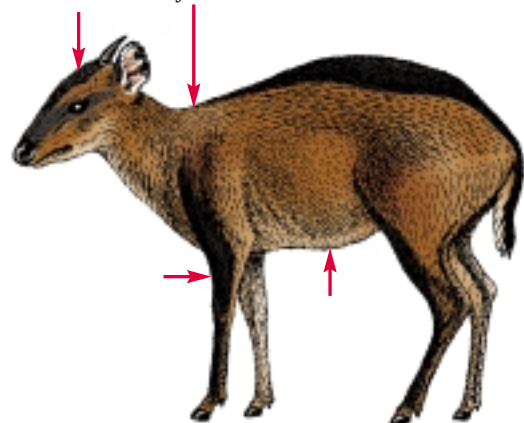
 *Cephalophus sylvicultor*




With dorsal stripe / Avec raie dorsale / Con raya dorsal

no crest
pas de crête
sin cresta

wide dorsal stripe begins at neck
large raie dorsale débutant au cou
raya dorsal ancha comensando desde el cuello



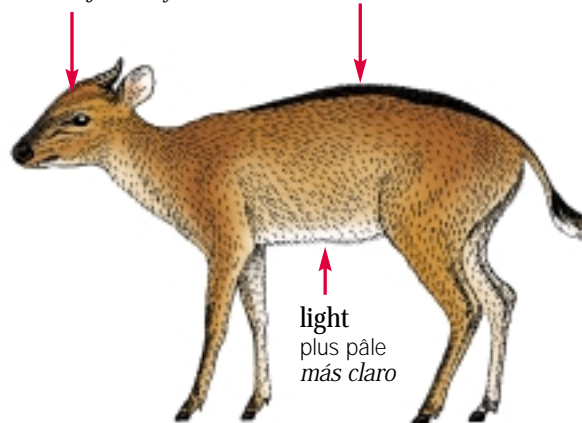
 **Cephalophus dorsalis**

 **Cephalophus rufilatus***

*legs and dorsal band bluish-grey, crest
*pattes et raie dorsale couleur gris-bleuâtre, crête
*patas y raya dorsal color gris azulado, cresta

orange crest
crête orange
cresta naranja

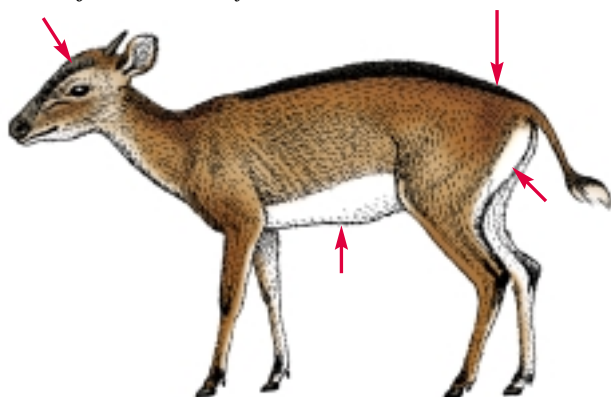
narrow dorsal stripe begins behind shoulder
étroite raie dorsale débutant à l'épaule
raya dorsal estrecha comensando desde el hombro




 **Cephalophus ogilbyi**

red-brown
brun rougeâtre
café rojizo

dorsal stripe narrows toward tail
raie dorsale rétrécissant vers la queue
raya dorsal se estrecha cerca de la cola




 **Cephalophus leucogaster**

orange brown
brun orangé
café anaranjado

dorsal stripe widens toward tail
raie dorsale s'élargissant vers la queue
raya dorsal se ensancha cerca de la cola



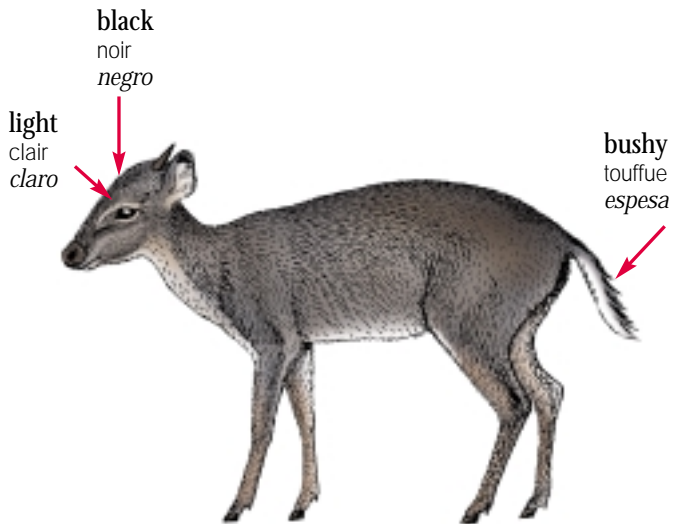
 **Cephalophus callipygus**



straight
droites
rectos

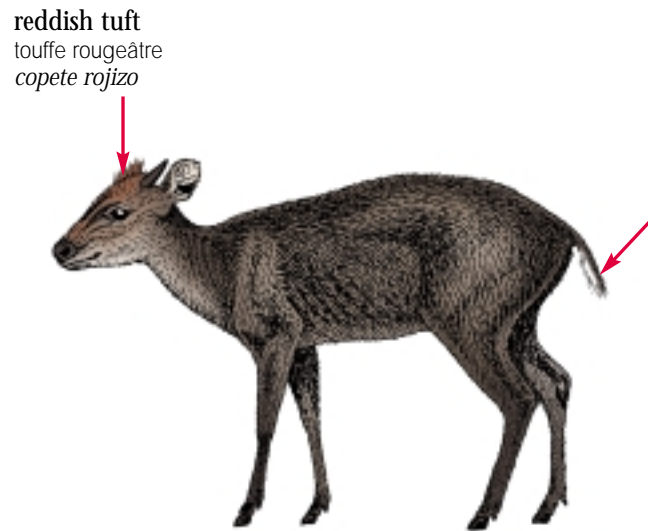
Duikers
Céphalophes
Duiqueros

Without dorsal stripe / Sans raie dorsale / Sin raya dorsal



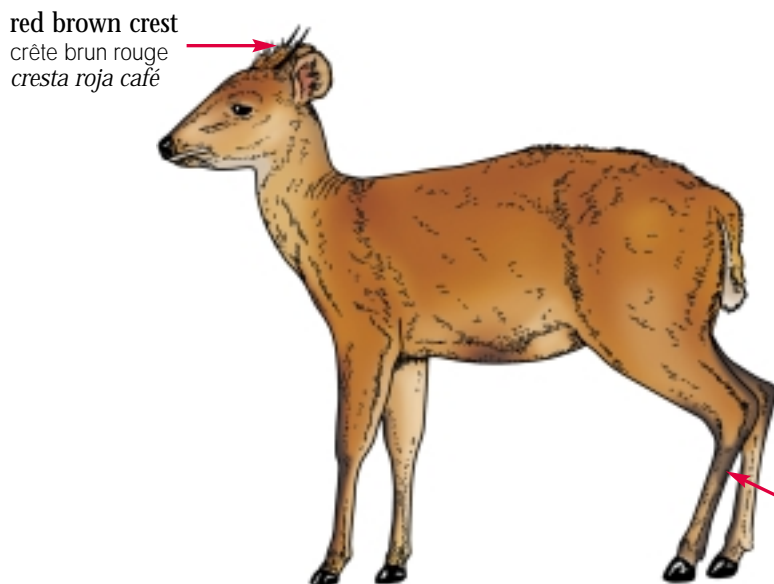
Sp. BOV - 5 → **1**

Sp. BOV - 4 → **1**



Cephalopus spadix

Cephalopus niger



Cephalopus nigrifrons

Cephalopus natalensis

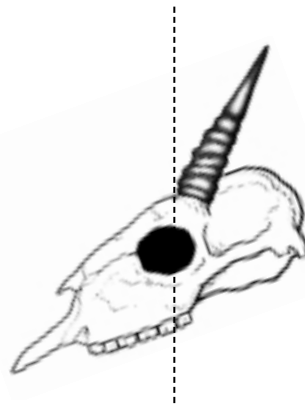
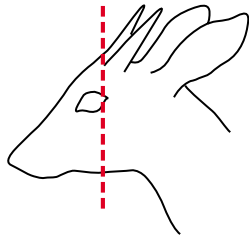
NOTE: *Cephalopus adersi*, *C. harveyi*, and *C. weynsi* are not illustrated
 NOTE: *Cephalopus adersi*, *C. harveyi*, et *C. weynsi* ne sont pas illustrées
 NOTA: *Cephalopus adersi*, *C. harveyi*, y *C. weynsi* no estan ilustradas

Dik-dik, Pygmy Antelope, Oribi
 Dik-dik, Suni, Ouéribie
 Dik-dik, Suni, Oribi

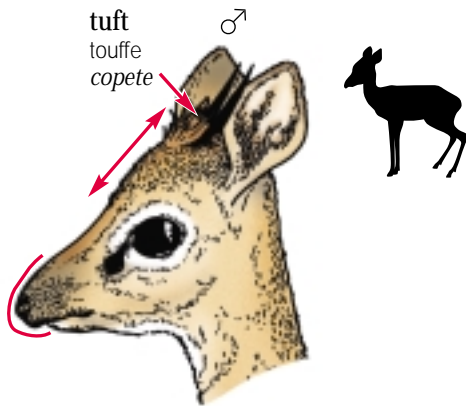
straight
 droites
 rectos





Other Species / Autres espèces / Otras especies

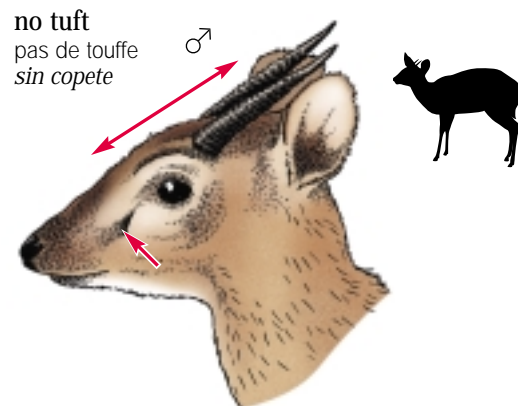


-  Dorcatragus megalotis
-  Madoqua Spp.
-  Neotragus Spp.
-  Ourebia ourebi
-  Oreotragus oreotragus
-  Raphicerus Spp.
-  Rhynchotragus Spp.



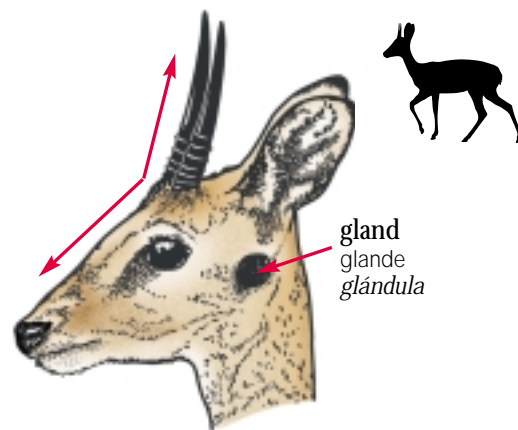
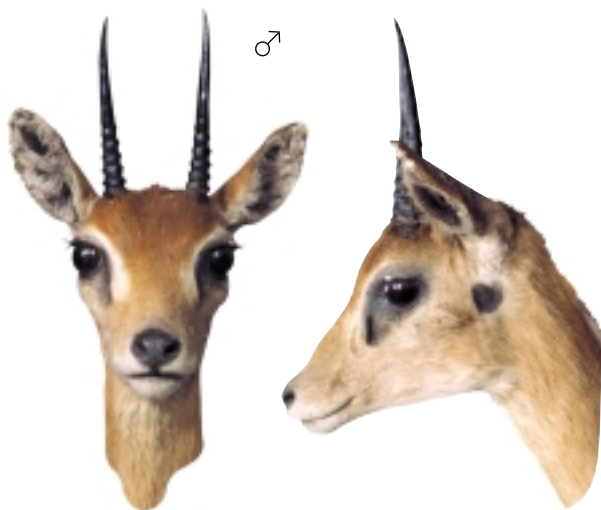
← 52 - 72 cm → 30 - 43 cm

-  Madoqua Spp.
-  Rhynchotragus Spp.



← 50 - 62 cm → 25 - 41 cm

-  Neotragus Spp.



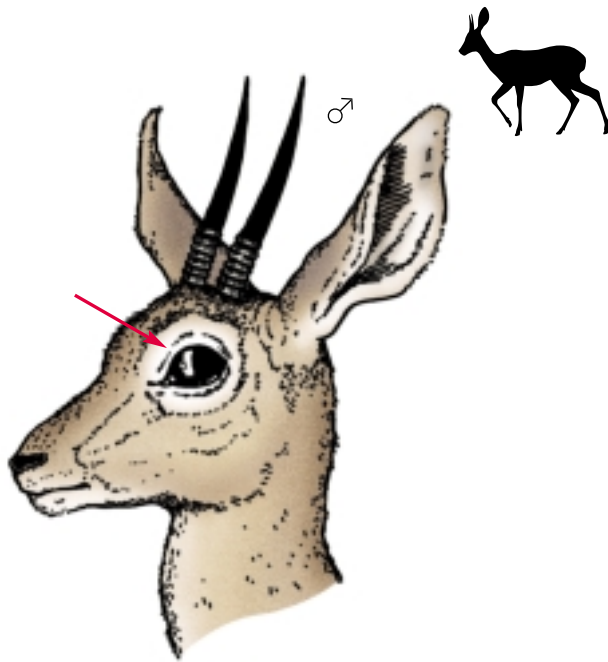
← 92 - 140 cm → 50 - 70 cm

-  Ourebia ourebi




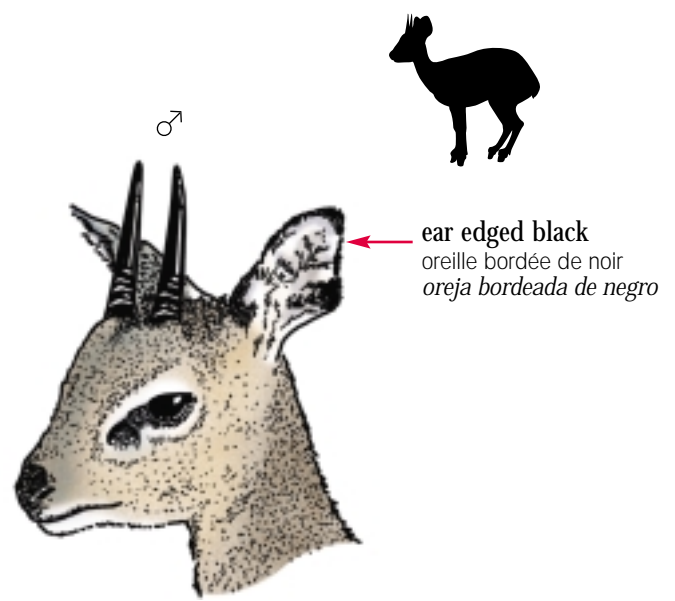
straight
droites
rectos

Beira Antilope, Klipspringer, Grysbok
Beira, Oréotrague, Raphicère
Antilope beira, Antilope saltarocas, Grysbok




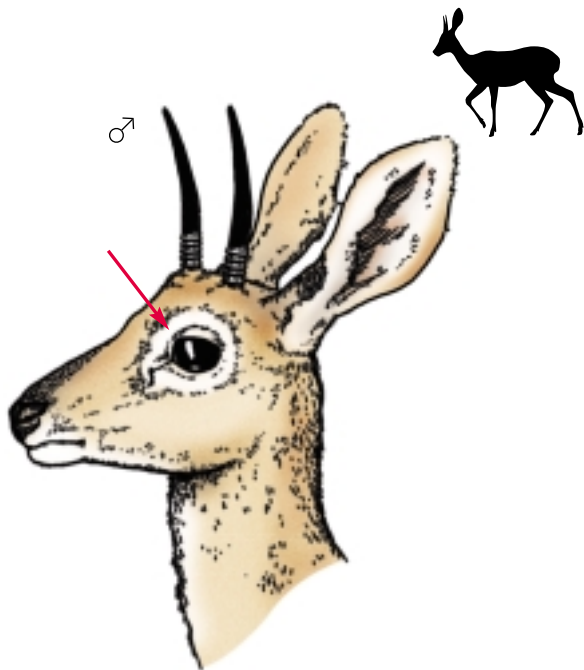
← 76 - 86 cm → 50 - 76 cm

 *Dorcatragus megalotis*



← 77 - 115 cm → 45 - 60 cm

 *Oreotragus oreotragus*



← 61 - 95 cm → 45 - 60 cm

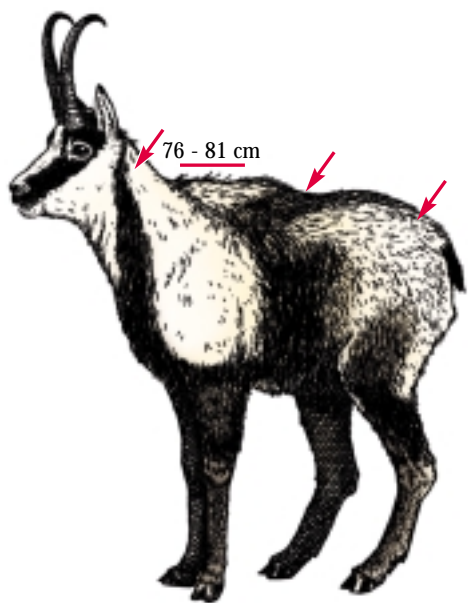
 *Raphicerus Spp.*



 *Raphicerus melanotis*

Chamois
Chamois
Gamuza

slightly curved
légèrement recourbées
ligeramente encorvados



← 90 - 130 cm →

winter: blackish-brown, with creamy white patches on body
summer: reddish-brown, without white patches
hiver: brun noirâtre, avec taches blanc crème sur le corps
été: brun rougeâtre, sans taches blanches
invierno: café negruzco, con manchas color en el cuerpo
verano: café rojizo, sin manchas blancas

Ssp. BOV - 27 → **1**

IT

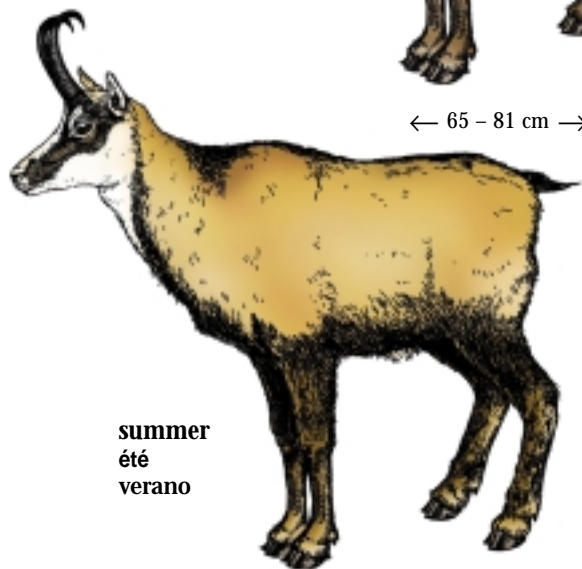
Ssp. BOV - 28, 29 → **1**

FR, ES



winter
hiver
invierno

← 65 - 81 cm →



summer
été
verano

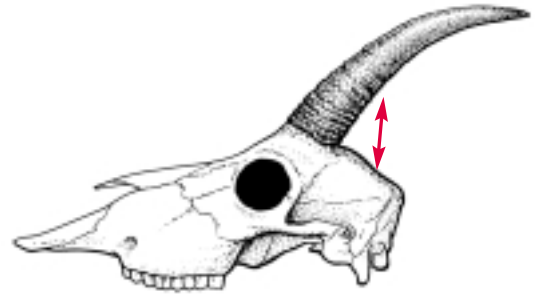
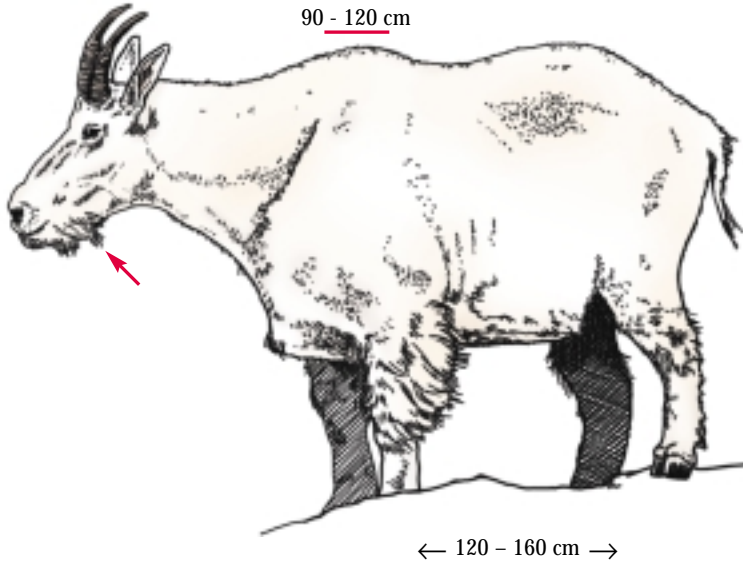


Rupicapra rupicapra

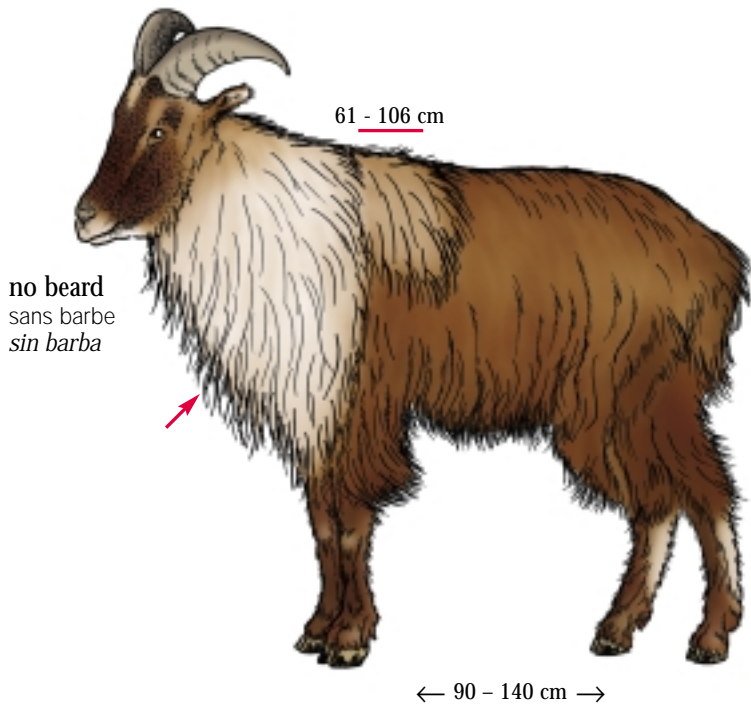


slightly curved
légèrement recourbées
ligeramente encorvados

American Mountain Goat, Tahrs
Chèvre des montagnes Rocheuses, Tahrs
Cabra de las Rocosas, Tares



 *Oreamnos americanus*



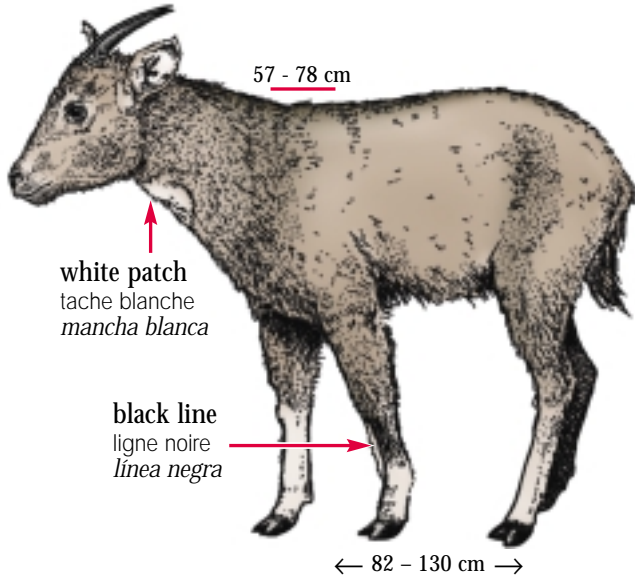
 *Hemitragus Spp.*

Goral, Mainland Serow
 Goral, Capricorne de Sumatra
 Goral, Sirao

slightly curved
 légèrement recourbées
 ligeramente encorvados



reddish, greyish or brownish with black dorsal stripe
 rougeâtre, grisâtre ou brunâtre avec raie dorsale noire
 rojizo, grisáceo o parduzco con raya dorsal negra



white patch
 tache blanche
 mancha blanca

black line
 ligne noire
 línea negra

long tail
 grande queue
 grande cola

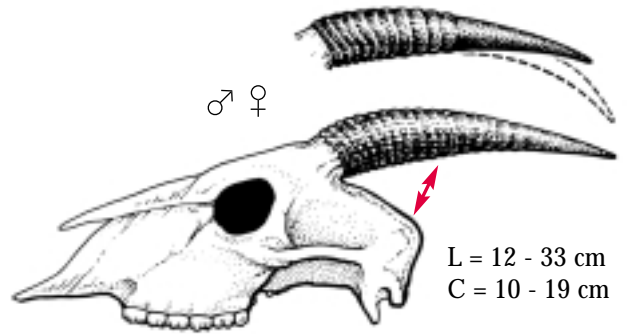


 Spp. BOV 15, 16, 18

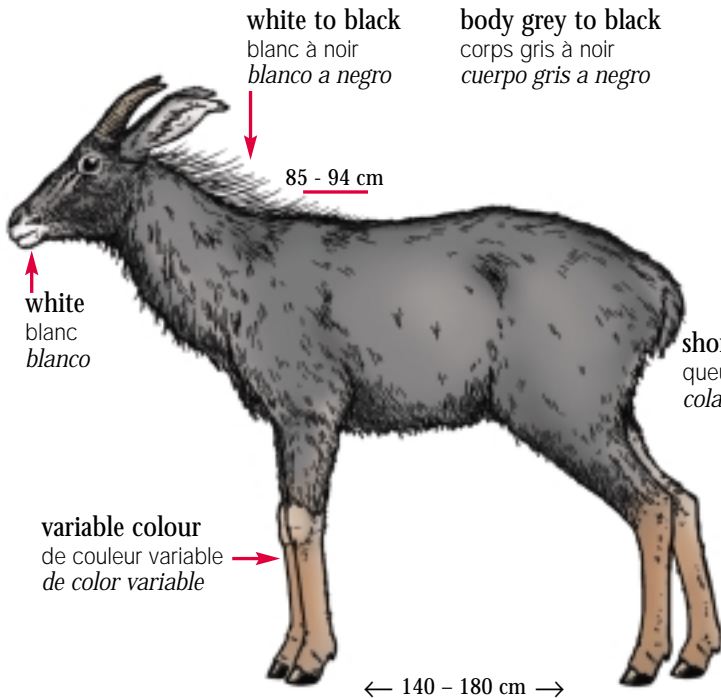
1

 Spp. BOV 17, 19

1



L = 12 - 33 cm
 C = 10 - 19 cm



white to black
 blanc à noir
 blanco a negro

body grey to black
 corps gris à noir
 cuerpo gris a negro

white
 blanc
 blanco

variable colour
 de couleur variable
 de color variable

short tail
 queue courte
 cola corta



 Naemorhedus sumatraensis



slightly curved
légèrement recourbées
ligeramente encorvados

Anoas, Tamaraw
Anoas, Tamarau
Anoas, Búfalo de Mindoro

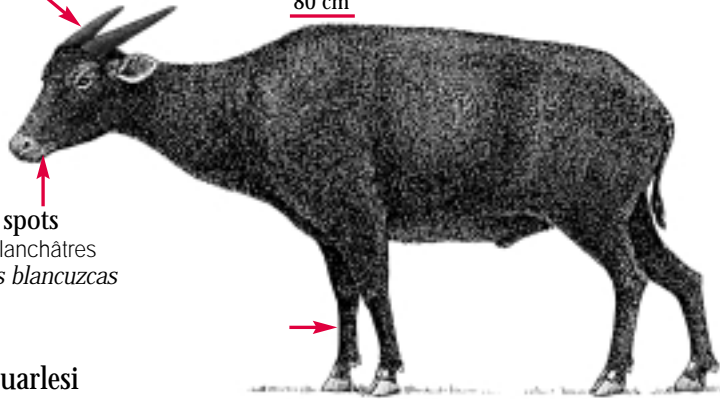
black horns
cornes noires
cuernos negros

brown to black
du brun au noir
café a negro

rounded cross-section, no rings
coupe transversale arrondie, sans anneaux
corte transversal redondeado, sin anillos


whitish spots
taches blanchâtres
manchas blancuzcas

80 cm



black
noire
negro

L ≤ 20 cm

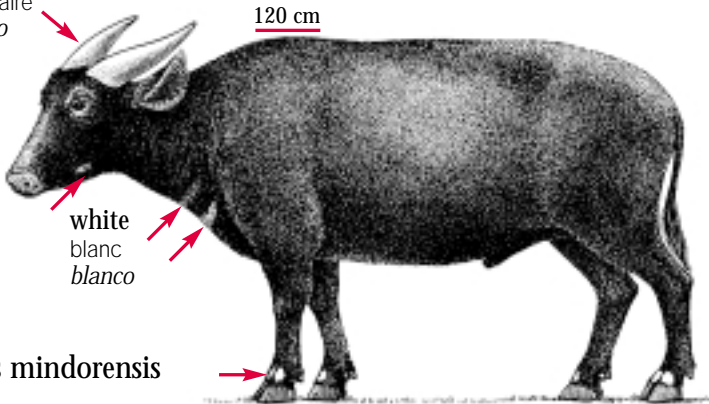
 Bubalus quarlesi

 ID

pale
de couleur claire
de color claro

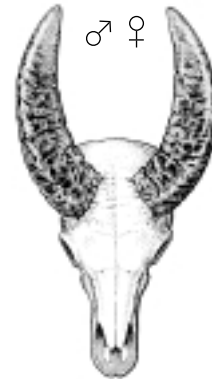
black, sometimes brown
noir, parfois brun
negro, a veces café

triangular cross-section, with rings
coupe transversale triangulaire, avec anneaux
corte transversal triangular, con anillos




white
blanc
blanco

120 cm



pale
pâle
pálido

L ≤ 51 cm

 Bubalus mindorensis

 PH

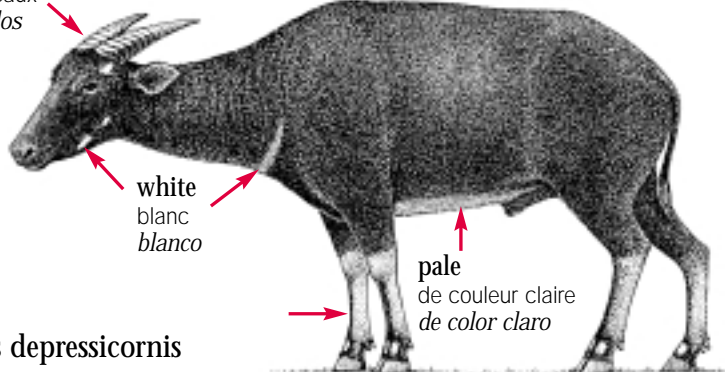
rings
anneaux
anillos

black
noir
negro

triangular cross-section, with rings
coupe transversale triangulaire, avec anneaux
corte transversal triangular, con anillos

white
blanc
blanco

100 cm



pale
de couleur claire
de color claro



pale
pâle
pálido

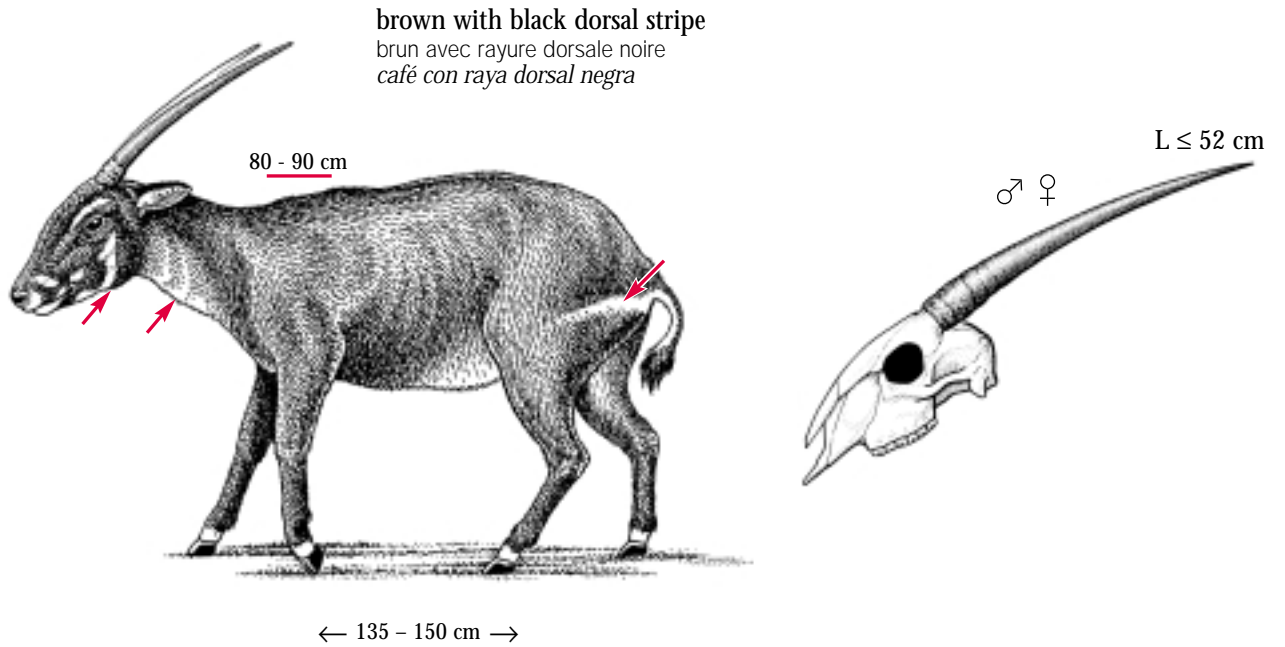
L ≤ 37 cm


 Bubalus depressicornis

 ID

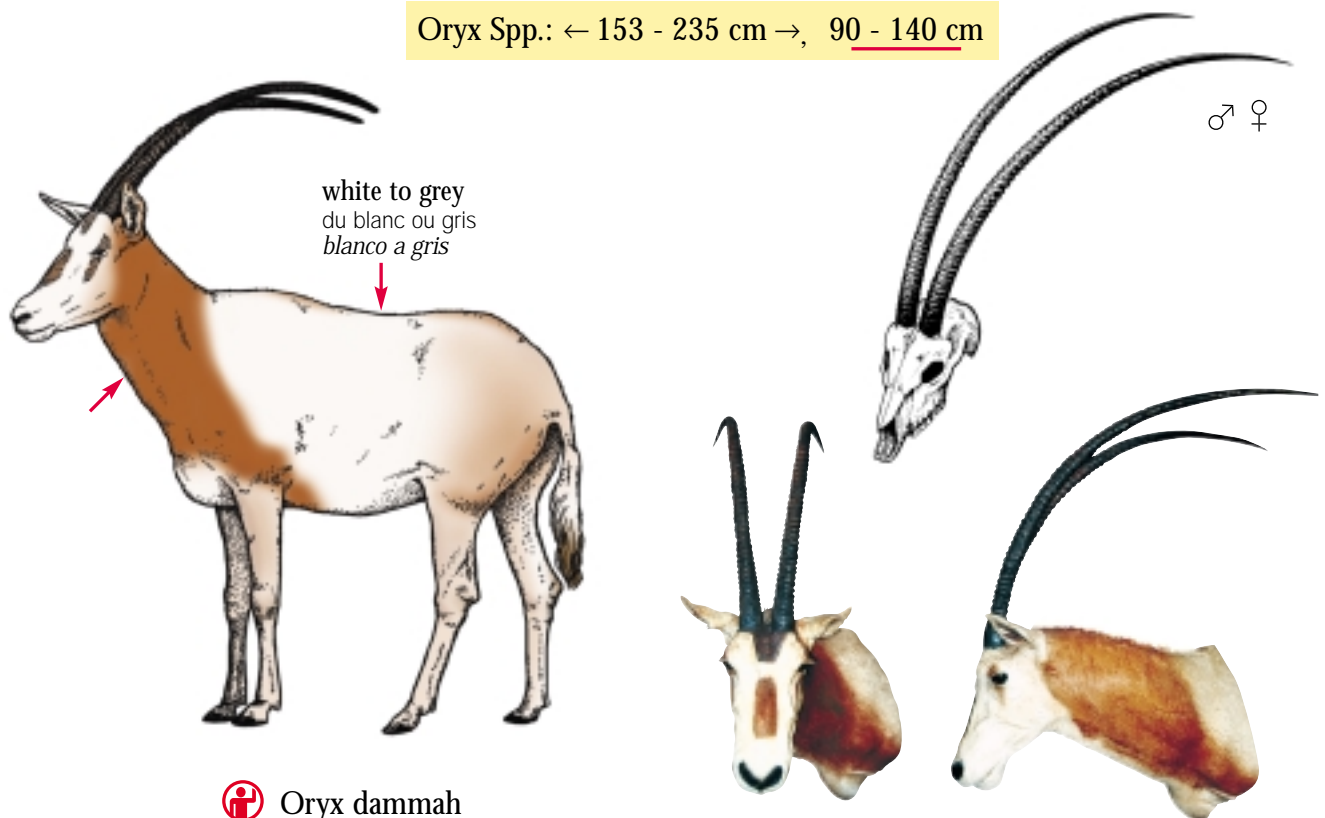
Saola, Scimitar Oryx
Saola, Oryx algazelle
Saola, Oryx cimitaria

slightly curved
légèrement recourbées
ligeramente encorvados



 Pseudoryx nghentinhensis

Oryx Spp.: ← 153 - 235 cm →, 90 - 140 cm

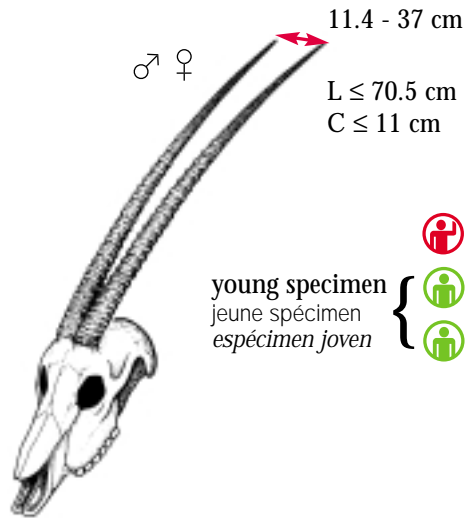
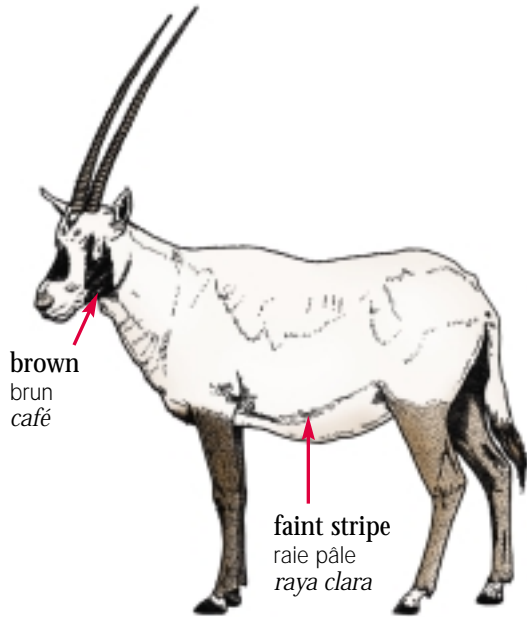


 Oryx dammah



slightly curved
légèrement recourbées
ligeramente encorvados

Arabian Oryx
Oryx d'Arabie
Oryx arabe



 Oryx leucoryx

young specimen
jeune spécimen
especimen joven

 Oryx beisa

 Oryx gazella

 Oryx leucoryx

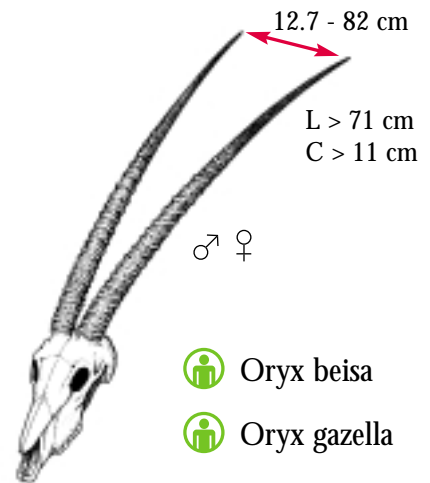
Common Oryx, Beisa Oryx
Oryx, Oryx beisa
Oryx gris, Oryx beisa



 Oryx gazella



 Oryx beisa



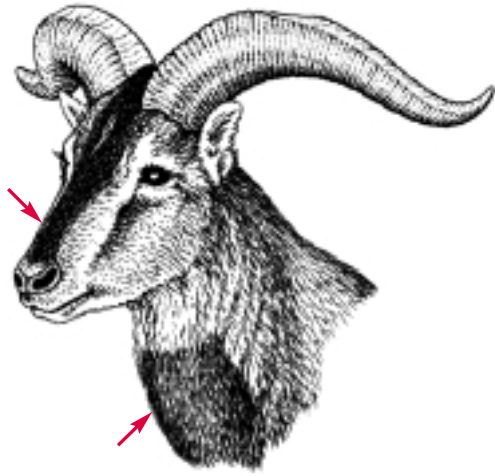
 Oryx beisa

 Oryx gazella


curved
recourbées
encorvados




Blue Sheep, Dwarf Bharal
Bharal de l'Himalaya, Bharal nain
Bharal del Hymalaya, Baral enano



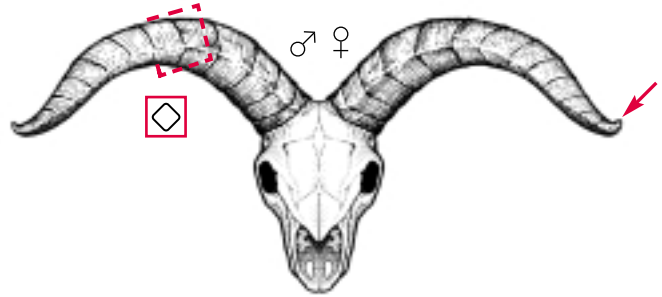
← 115 - 165 cm → 75 - 91 cm

 Pseudois nayaur

 Pseudois schaeferi

smooth
lisse
liso

tips twist slightly
extrémités se recourbant légèrement
puntas ligeramente encorvadas




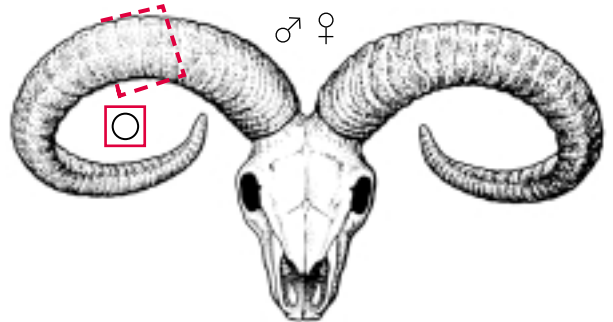
East Caucasian Tur
Bouquetin de Caucase oriental
Tur oriental



79 - 98 cm

← 130 - 150 cm →

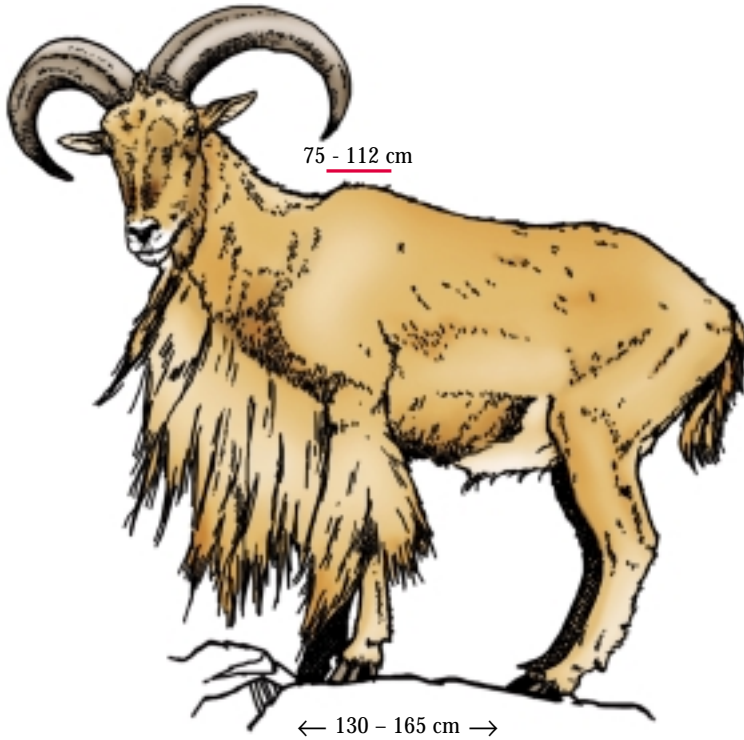
 Capra cylindricornis





curved
recourbées
encorvados

Barbary Sheep
Mouflon à manchettes
Arui



finely striated, almost smooth,
shallow lengthwise groove
finement striée, presque lisse, sillon peu
profond sur la longueur
*finamente estriado, casi liso, surco poco
profundo a lo largo del cuerno*

 Ammotragus lervia

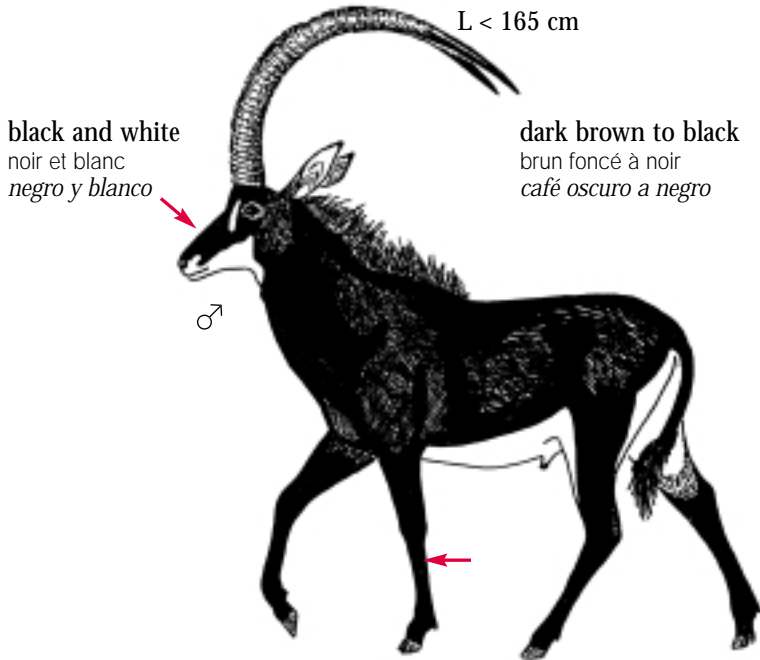


Sable Antelope, Roan Antelope
 Hippotrague, Antilope rouanne
 Antílope caballo, Antílope ruano

curved
 recourbées
 encorvados



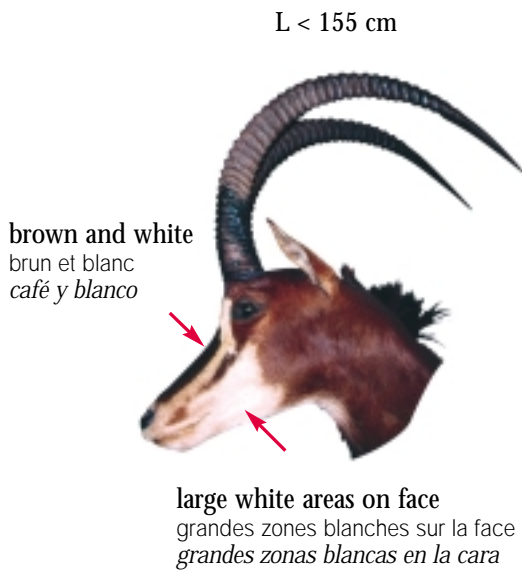
Hippotragus Spp.: ← 188 - 267 cm →, 100 - 160 cm



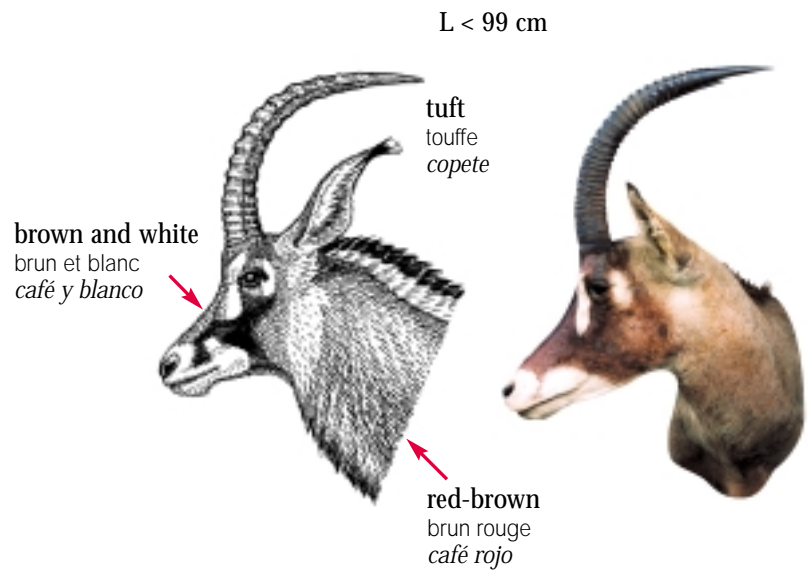
Hippotragus niger variani



Hippotragus Spp.



Hippotragus niger niger

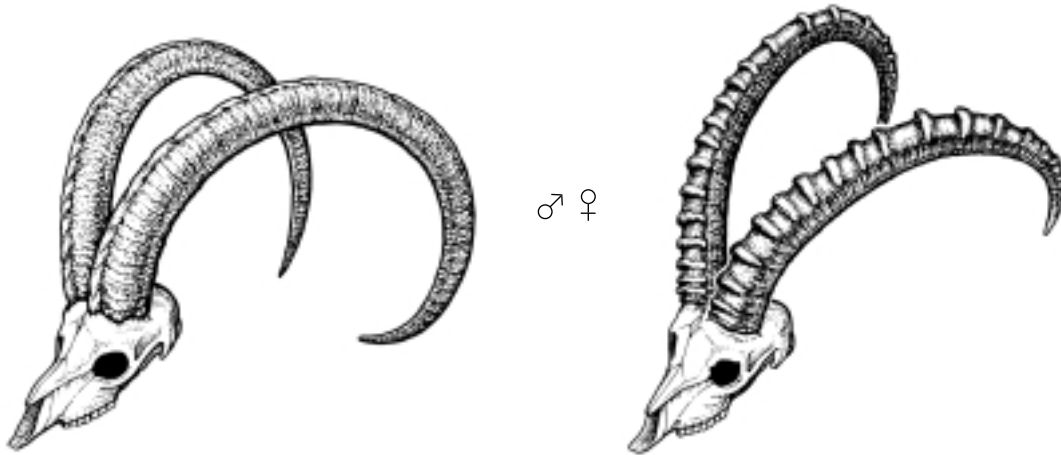


Hippotragus equinus



curved
recourbées
encorvados

Pasang
Pasang
Bezoar

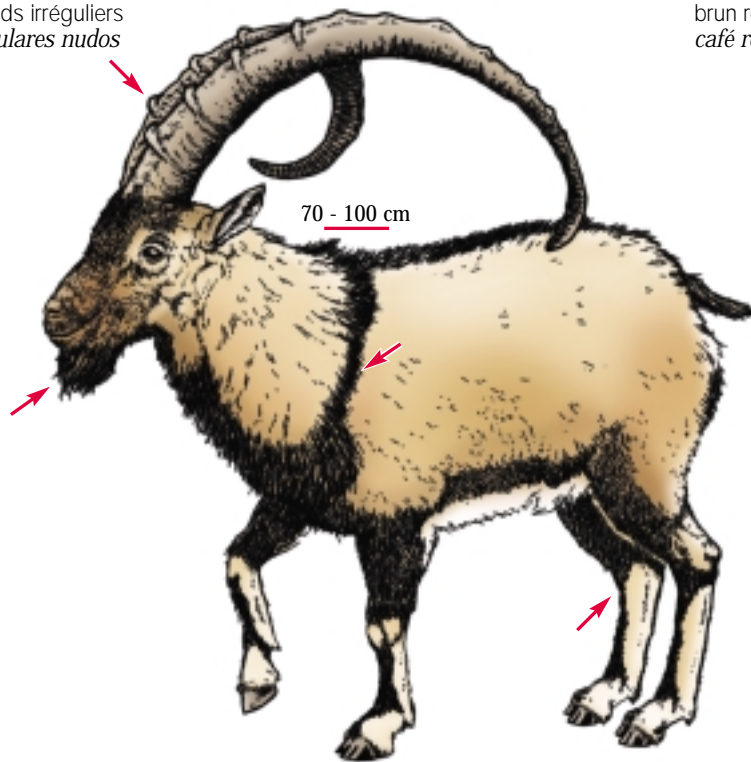


 Capra Spp.

keel with irregular knots
quille avec noeuds irréguliers
arista con irregulares nudos


L = 80 - 130 cm

reddish brown in summer
brun roux en été
café rojizo en verano



70 - 100 cm

← 120 - 160 cm →

 Capra aegagrus

curved
recourbées
encorvados

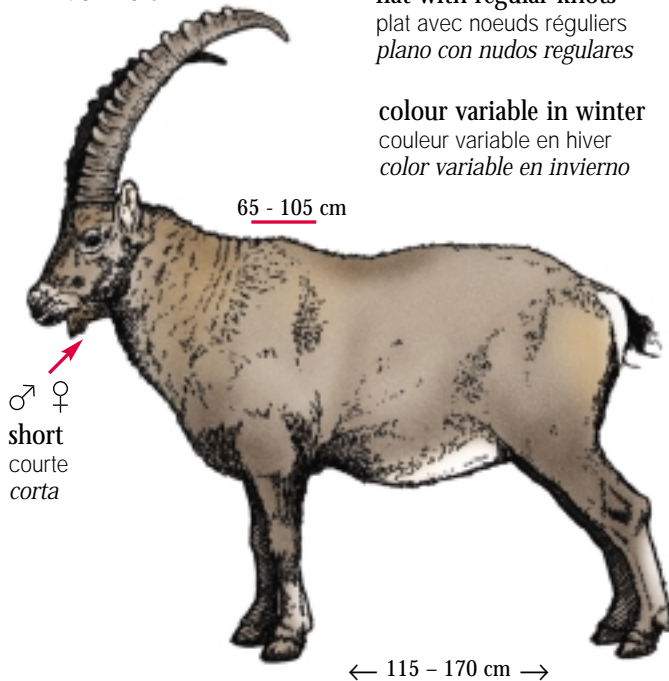


Ibex
Bouquetin d'Asie
Sakin

L = 70-140 cm

flat with regular knots
plat avec noeuds réguliers
plano con nudos regulares

colour variable in winter
couleur variable en hiver
color variable en invierno



♂ ♀
short
courte
corta

65 - 105 cm

← 115 - 170 cm →

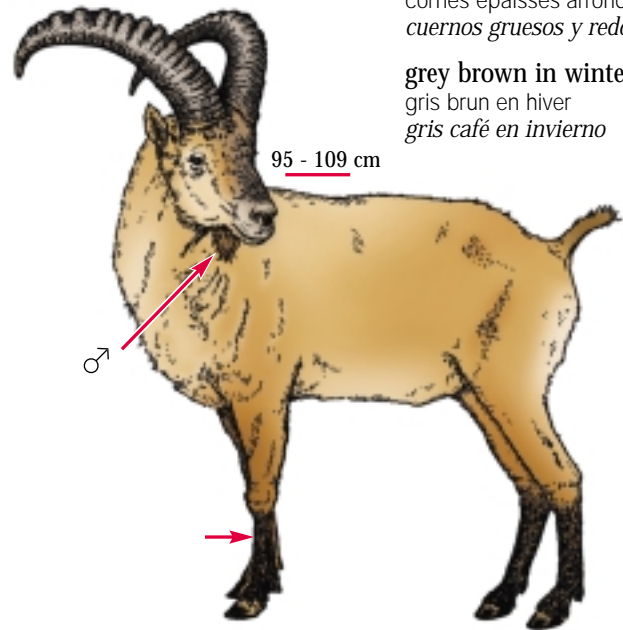
 Capra ibex

West Caucasian Tur
Bouquetin du Caucase occidental
Tur occidental

L = 74 cm


thick rounded horns
cornes épaisses arrondies
cuernos gruesos y redondeados

grey brown in winter
gris brun en hiver
gris café en invierno



95 - 109 cm

← 150 - 165 cm →

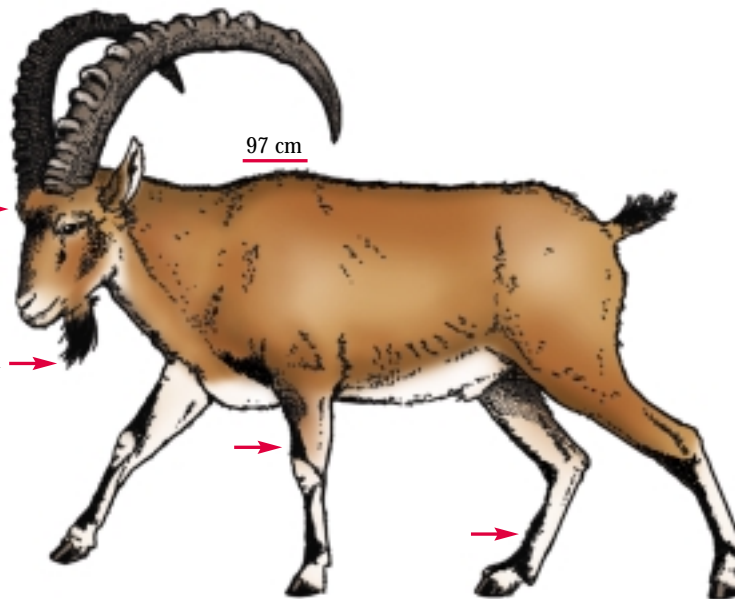
 Capra caucasica

Walia Ibex
Bouquetin d'Abyssinie
Ibice de Walia

L = 116 cm

forehead protrudes
front proéminent
frente prominente

♂ short, black
courte, noire
corta, negra



97 cm

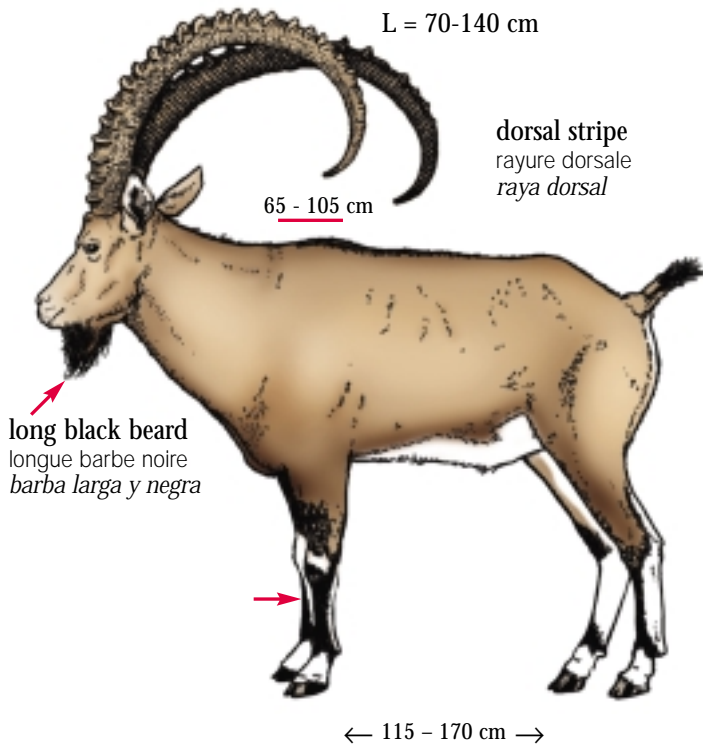
← 115 - 170 cm →


 Capra walie

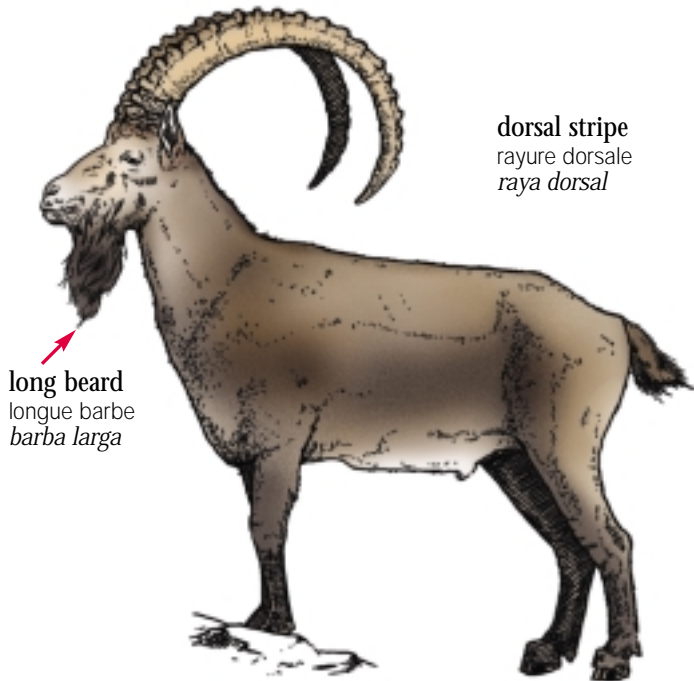



curved
recourbées
encorvados

Nubian Ibex, Siberian Ibex
Bouquetin de Nubie, Bouquetin de Sibérie
Ibice de Nubia, Ibice Asiatico



 Capra nubiana



 Capra sibirica

Geographic distribution of wild sheep (Ovis Spp.)
Répartition géographique des mouflons (Ovis Spp.)
Distribución geográfica de los muflones (Ovis Spp.)



Legend/Légende/Pie:

O. = Ovis; a = ammon; c. = canadensis; d. = dalli; n. = nivicola; o. = orientalis; v. = vignei;
* (...x...) = hybrid/hybride/híbrido....

in bold/en caractère gras/en *negrita* = regular/régulier/*regular* =

If species name on permit does not match this list, check synonyms in the index.

Si le nom de l'espèce sur le permis n'apparaît pas sur cette liste, voir les synonymes dans l'index.

Si el nombre de la especie sobre el permiso no esta en la lista abajo, ver a los sinonimos en el indice.

Country Pays País	Species and sub-species Espèces et sous-espèces Especies y sub-especies	Country Pays País	Species and sub-species/ Espèces et sous-espèces/ Especies y sub-especies
AF	O. v. cycloceros; O.a. polii	IT	O. o. musimon
AM	O. o. gmelini	KG	O. v. arkal; O. a. karelini
AZ	O. o. gmelini	KZ	O. a. collium; O. a. karelini; O. a. nigrimontana
BG	O. o. musimon	LU	O. o. musimon
CA	O. c. californiana; O. c. canadensis; O. d. dalli; O. d. stonei	MN	O. a. darwini
CH	O. o. musimon	MX	O. c. cremnobates; O. c. mexicana; O. c. weemsi
CN	O. a. ammon; O. a. darwini; O. a. hodgsoni; O. a. jubata; O. a. karelini, O. a. polii	NL	O. o. musimon
CY	O. o. ophion	NP	O. a. hodgsoni
CZ	O. o. musimon	PK	O. v. cycloceros; O. v. punjabiensis; O. v. vignei; O. a. polii
DE	O. o. musimon	PL	O. o. musimon
DK	O. o. musimon	RO	O. o. musimon
ES	O. o. musimon	RU	O. n. allenii; O. n. borealis; O. n. lydekkeri; O. n. nivicola
FI	O. o. musimon	TJ	O. v. bochariensis; O. a. polii
FR	O. o. musimon	TM	O. v. arkal; O. v. bochariensis; O. v. cycloceros
HR	O. o. musimon	TR	O. o. gmelini
HU	O. o. musimon	UA	O. o. musimon
IN	O. v. vignei; O. a. hodgsoni	US	O. o. musimon; * (O. o. musimon X O. o. aries); O. c. californiana; O. c. canadensis; O. c. mexicana; O. c. nelsoni; O. d. dalli; Ovis o. gmelini; * (O. o. gmelini x O. o. arkal)
IQ	O. o. gmelini (?)	UZ	O. v. arkal; O. v. bochariensis; O. v. severtzovi
IR	O. v. arkal; O. v. cycloceros; O. o. gmelini; O. o. isphahanica; O. o. laristanica; *(O. o. gmelini x O. v. arkal; O. o. laristanica x O. v. cycloceros)	YU	O. o. musimon

For more information on the geographic distribution of wild sheep:

Pour de plus de détails sur la répartition géographique des mouflons:

Para mas informaciones sobre la distribución geográfica de los muflones:

"Wild Sheep and Goats and their Relatives - Status Survey and Conservation Action Plan for Caprinae"

Edited and Compiled by /Edité et compilé par/Editado y compilado por David M. Shackleton

Published by /Publié par/ Publicado por : IUCN - The World Conservation Union



curved
recourbées
encorvados

Argali Sheep
Mouflon d'Asie
Muflón Argal

Ovis Spp.: ← 120 - 180 cm →, 65 - 127 cm

body white to dark grey and brown, no beard
corps blanc à gris foncé et brun, sans barbe
cuero blanco a gris oscuro y café, sin barba



rounded edges
arêtes arrondies
aristas redondeadas





or
ou
o

deep, large wrinkles on top and sides,
rounded or sharp edges
rides profondes et larges sur le dessus et
les côtés, arêtes arrondies ou aiguës
*arrugas profundas y anchas en la parte superior
y en los lados, aristas redondeadas o agudas*

sharp edges
arêtes aiguës
aristas agudas

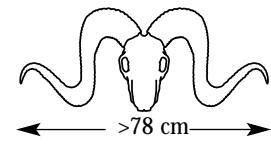


 Ovis ammon

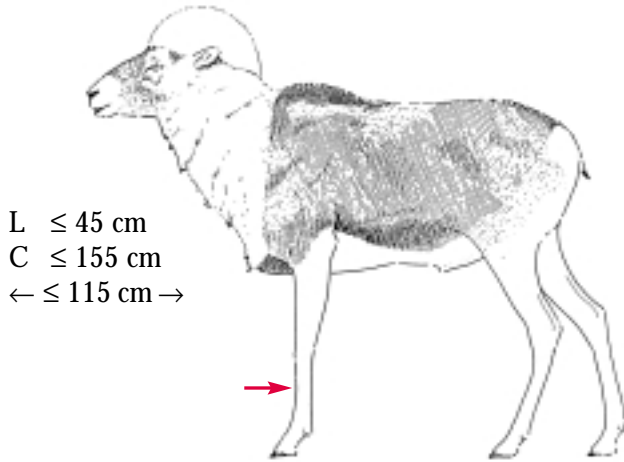
see also / voir aussi / véase también  Ssp. BOV - 20 → 26

Argali Sheep
Mouflon d'Asie
Muflón Argal


curved
recourbées
encorvados

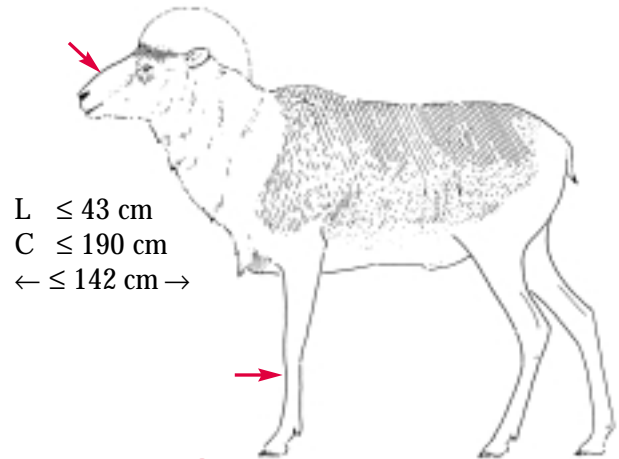


tail (including hair) / queue (avec poils) / cola (con pelos) > 8.5 cm




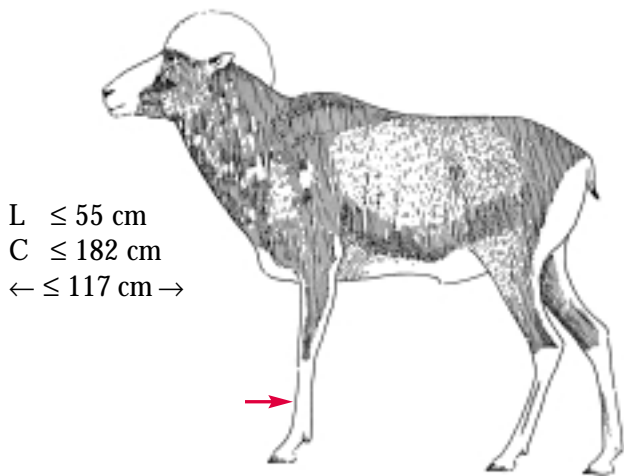
L ≤ 45 cm
C ≤ 155 cm
← ≤ 115 cm →

 Ovis ammon karelini



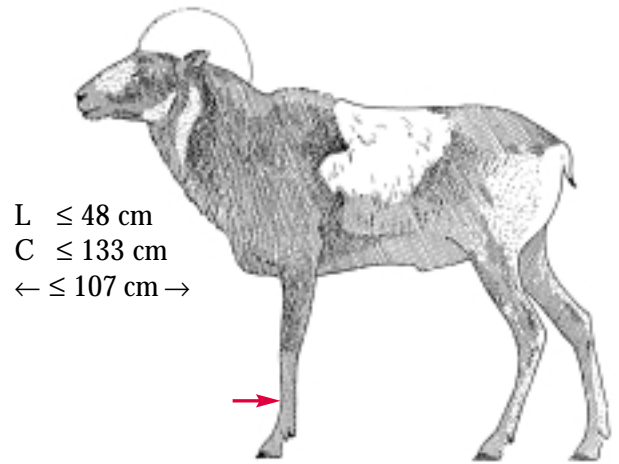
L ≤ 43 cm
C ≤ 190 cm
← ≤ 142 cm →

 Ovis ammon polii



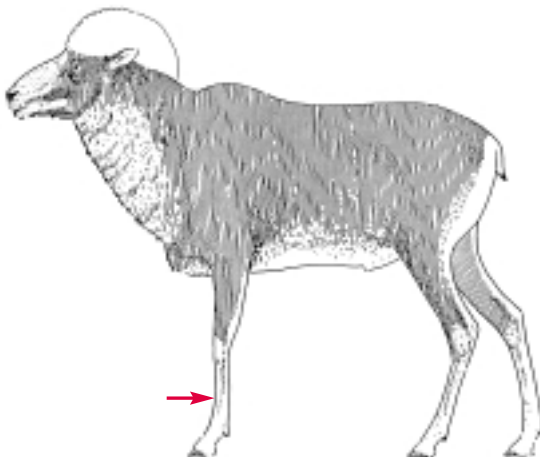
L ≤ 55 cm
C ≤ 182 cm
← ≤ 117 cm →

 Ovis ammon ammon

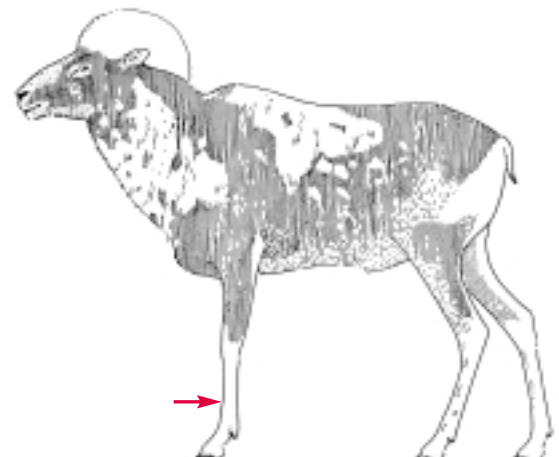



L ≤ 48 cm
C ≤ 133 cm
← ≤ 107 cm →

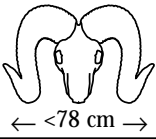
 Ovis ammon darwini



 Ovis ammon darwini (Peters 1876)



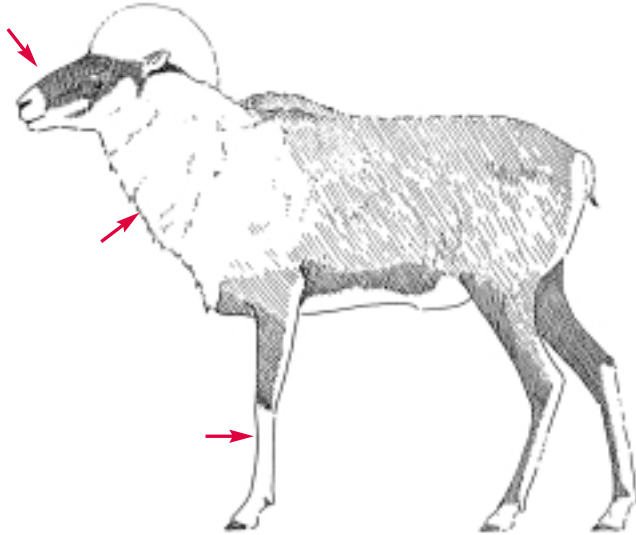
 Ovis ammon darwini



curved
recourbées
encorvados


Argali Sheep
Mouflon d'Asie
Muflón Argal


tail (including hair) / queue (avec poils) / cola (con pelos) > 8.5 cm



sharp edges
arêtes aiguës
aristas agudas



 *Ovis ammon nigrimontana*

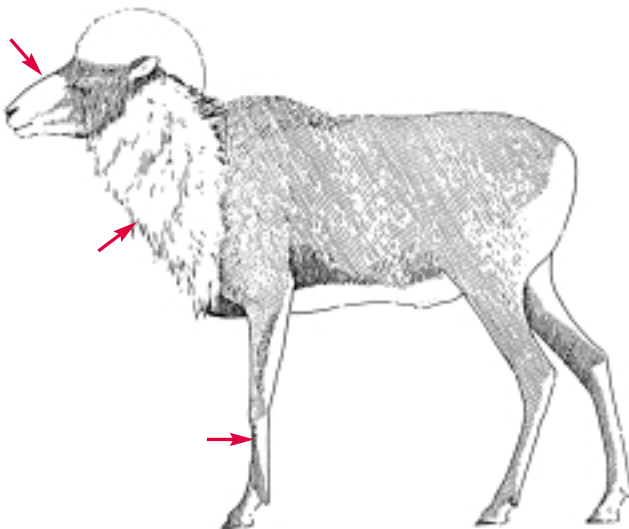
see also / voir aussi / véase tambien  *Ovis vignei* 82

Some sub-species have horns similar to those of *O. a. nigrimontana* but the neck ruff (white or black) is restricted to the front of the neck

Quelques sous-espèces ont des cornes semblables à celles de *O. a. nigrimontana* mais leur crinière (blanche ou noire) est restreinte à l'avant du cou


Algunas subespecies tienen cuernos similares a los de *O. a. nigrimontana* pero su collarín (blanco o negro) se limita a la parte delantera del cuello

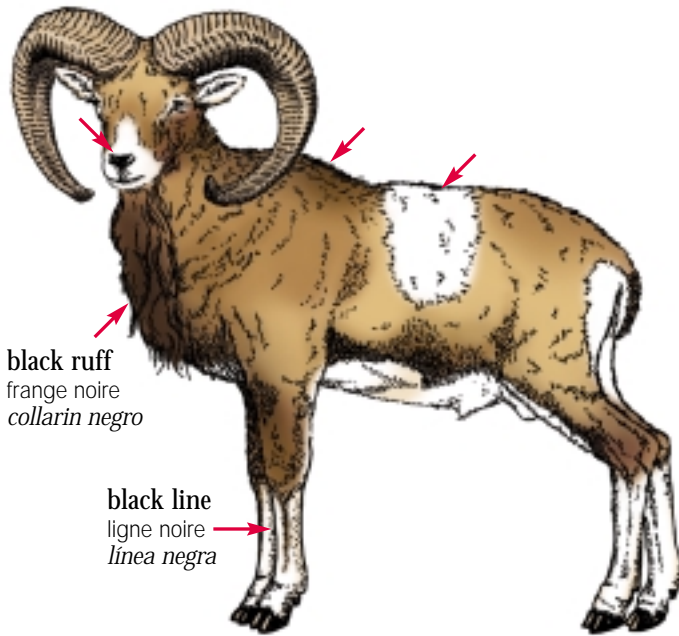
tail (including hair) / queue (avec poils) / cola (con pelos) < 8.5 cm



rounded edges
arêtes arrondies
aristas redondeadas



 *Ovis ammon hodgsoni*



black ruff
 frange noire
 collarin negro

black line
 ligne noire
 línea negra

 *Ovis orientalis ophion*

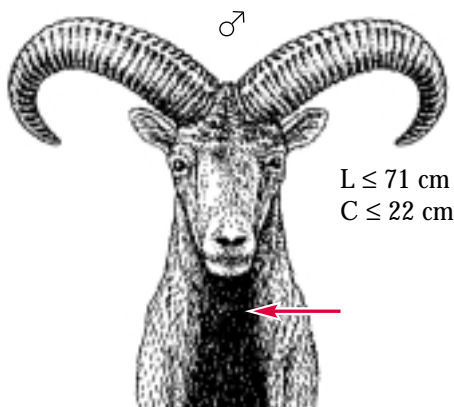


large sickle shape, fine or medium wrinkles,
 rounded edges

en forme de grande faucille, rides fines ou moyennes,
 arêtes arrondies
 en forma de hoz grande, arrugas finas o medianas,
 aristas redondeadas



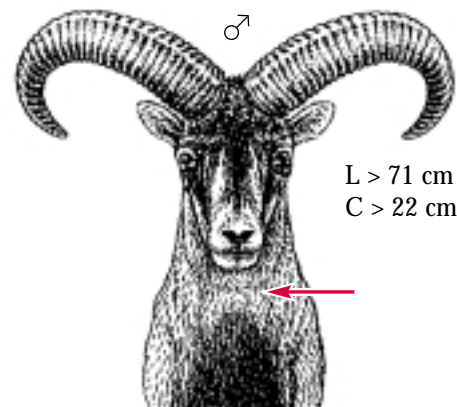
black ruff covers all of neck length
 frange noire sur toute la longueur du cou
 collarin negro sobre todo el cuello



$L \leq 71$ cm
 $C \leq 22$ cm

 *Ovis orientalis ophion*

black ruff restricted to lower neck
 frange noire limitée au bas du cou
 collarin negro limitado a la parte
 inferior del cuello



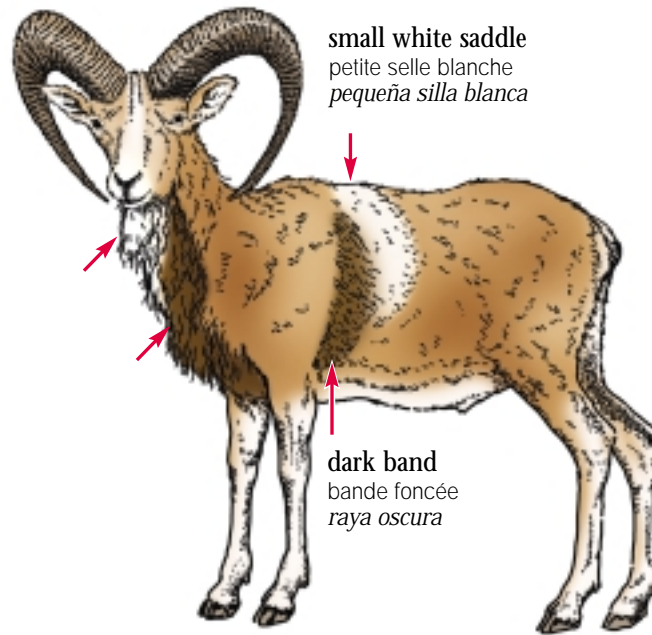
$L > 71$ cm
 $C > 22$ cm

 *Ovis orientalis gmelini*



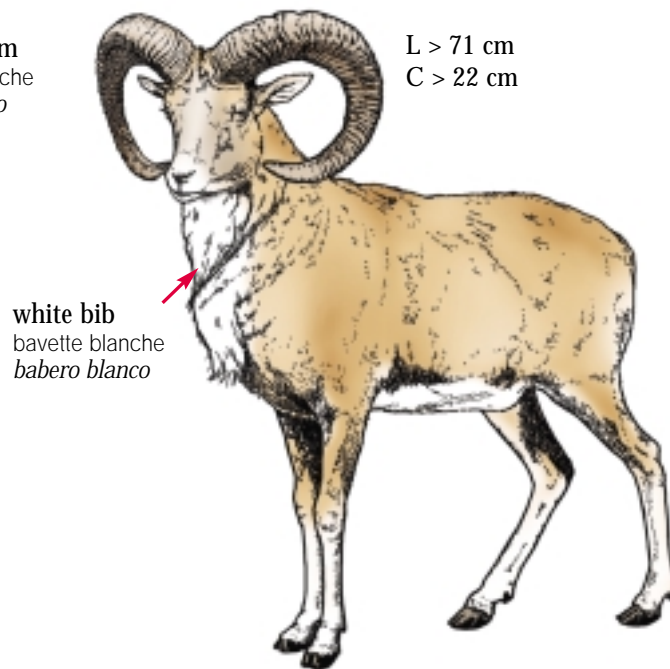
curved
recourbées
encorvados


Urial

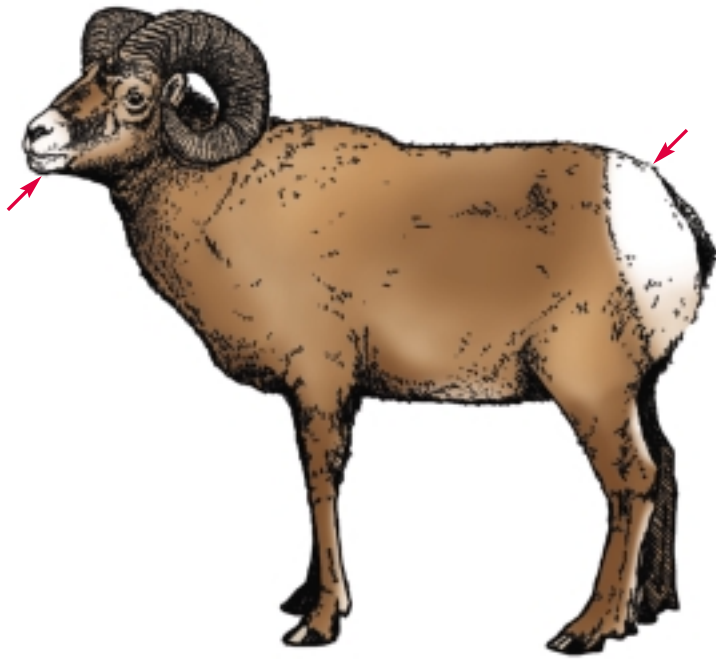


white form
forme blanche
tipo blanco

L > 71 cm
C > 22 cm



 Ssp. BOV - 20 → 26 **1**



-  Ovis canadensis
-  MX
-  Ovis canadensis
-  CA, US






curved
recourbées
encorvados

Stone Sheep, Dall Sheep
Mouflon de Stone, Mouflon de Dall
Carnero de Stone, Carnero de Dall




grey to black
gris à noir
gris a negro

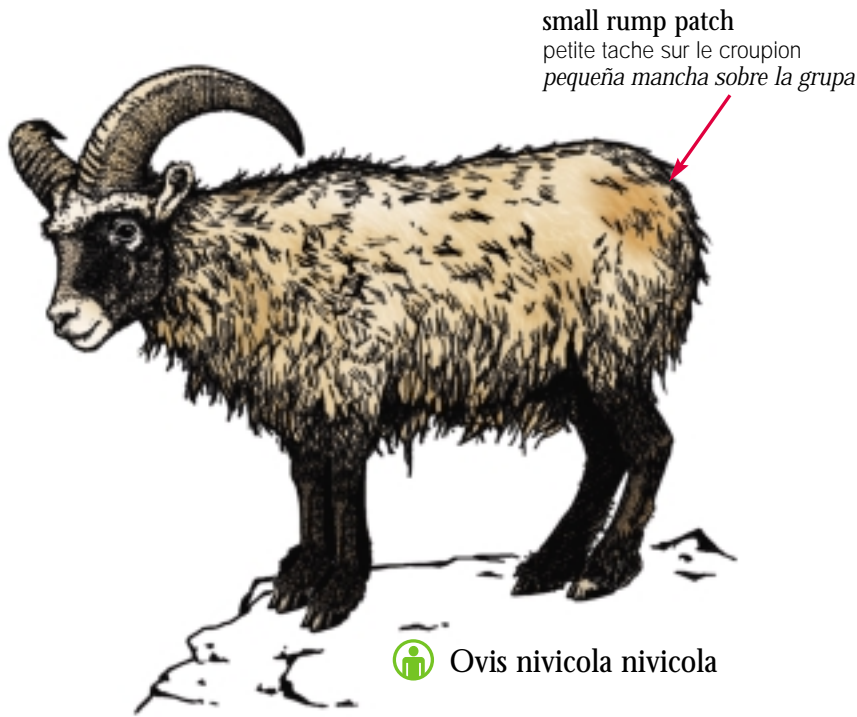


 Ovis dalli stonei

all white
entièrement blanc
completamente blanco



 Ovis dalli dalli



Ovis nivicola alleni

shallow, narrow wrinkles, deeper on top than sides;
sides almost smooth
rides étroites et peu profondes, plus profondes sur le dessus
que sur les côtés; côtés presque lisses
*arrugas estrechas y poco profundas, más profundas en
la parte superior que en los lados; los lados casi lisos*



Ovis canadensis **83**



Ovis dalli **84**

Ovis nivicola **85**