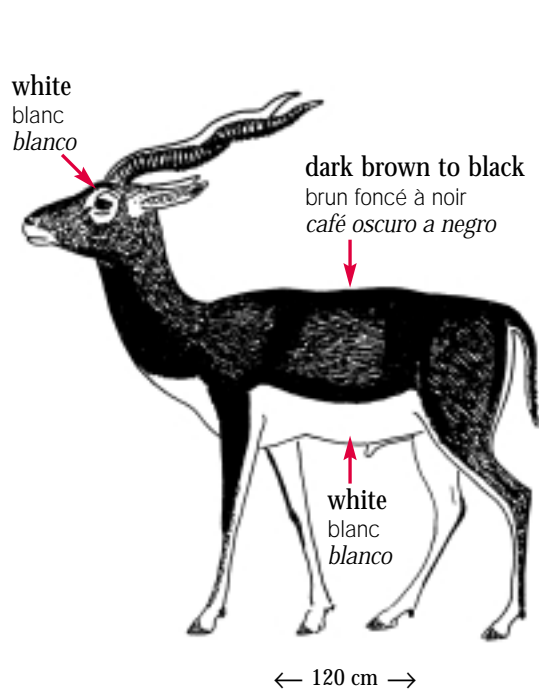


Blackbuck, Addax
 Antilope cervicapre, Addax
 Cervicapra, Adax

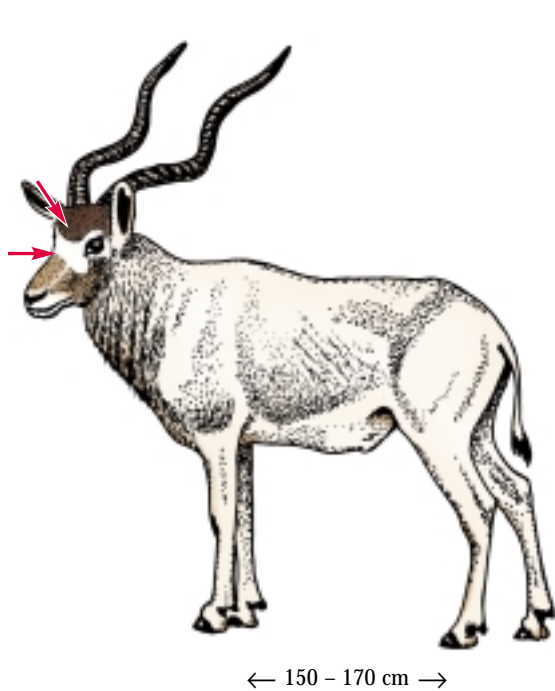
spiral horns
 cornes en spirales
 cuernos en espirales



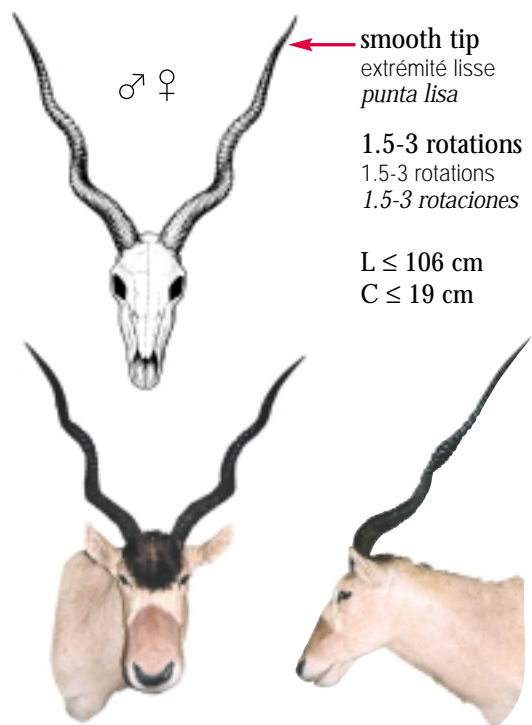
Bovidae: ⓘ 44 Spp. or/ou/o Spp. I, II or/ou/o III ⓘ 93 Spp.



ⓘ Antilope cervicapra



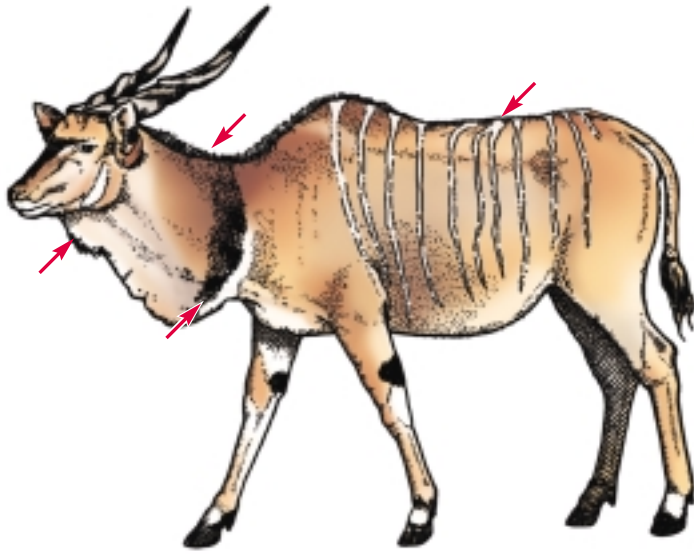
ⓘ Addax nasomaculatus






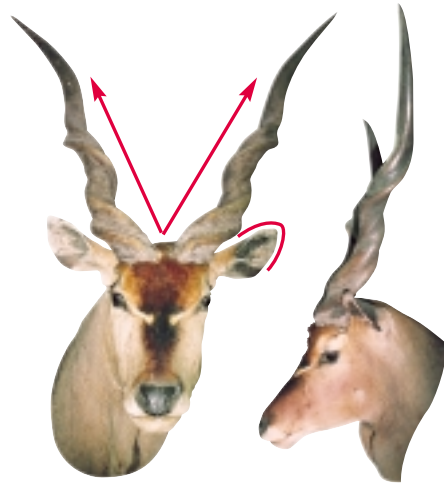
spiral horns
cornes en spirales
cuernos en espirales

Lord Derby Eland, Common Eland
Éland de Derby, Éland
Elan gigante, Elan común



← 220 - 290 cm →


 **Taurotragus derbianus**

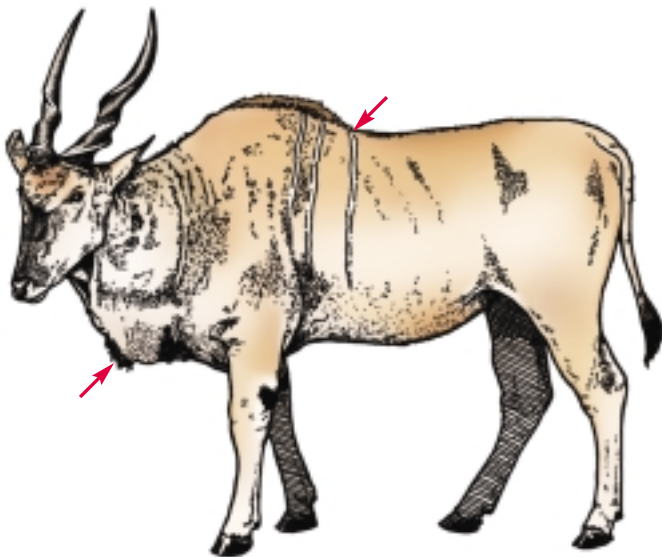


horns longer and more massive than *T. oryx*
cornes plus longues et plus massives que *T. oryx*
cuernos más largos y gruesos que *T. oryx*




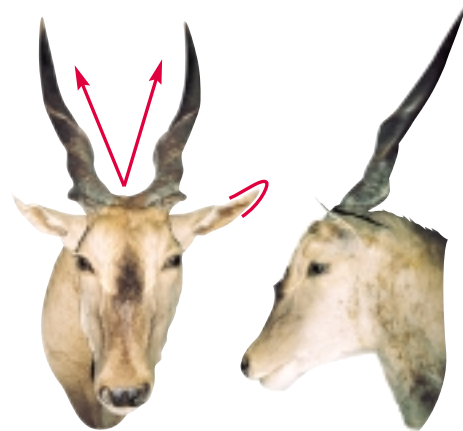
smooth tip
extrémité lisse
punta lisa

 **Taurotragus Spp.**



← 200 - 240 cm →

 **Taurotragus oryx**

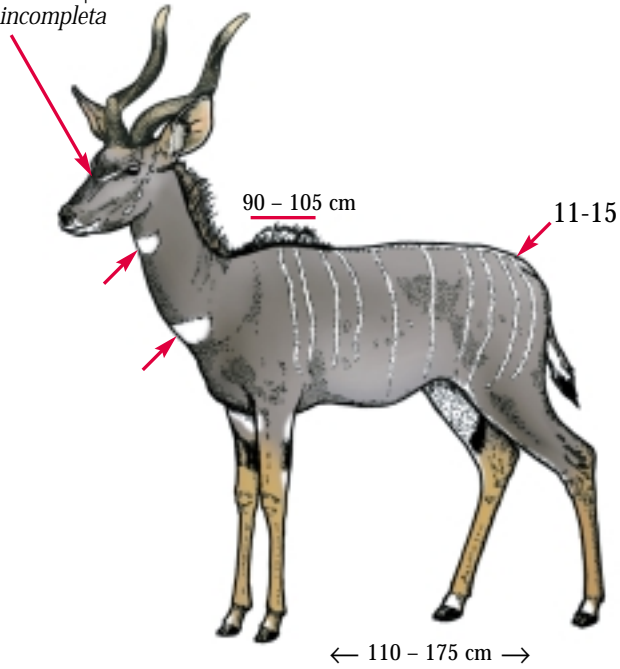



Lesser Kudu, Greater Kudu
 Petit koudou, Grand koudou
 Pequeño kudu, Kudu grande

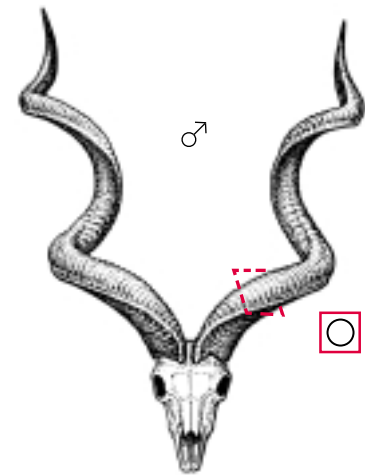
spiral horns
 cornes en spirales
 cuernos en espirales




incomplete white chevron
 rayure blanche incomplète
 raya blanca incompleta

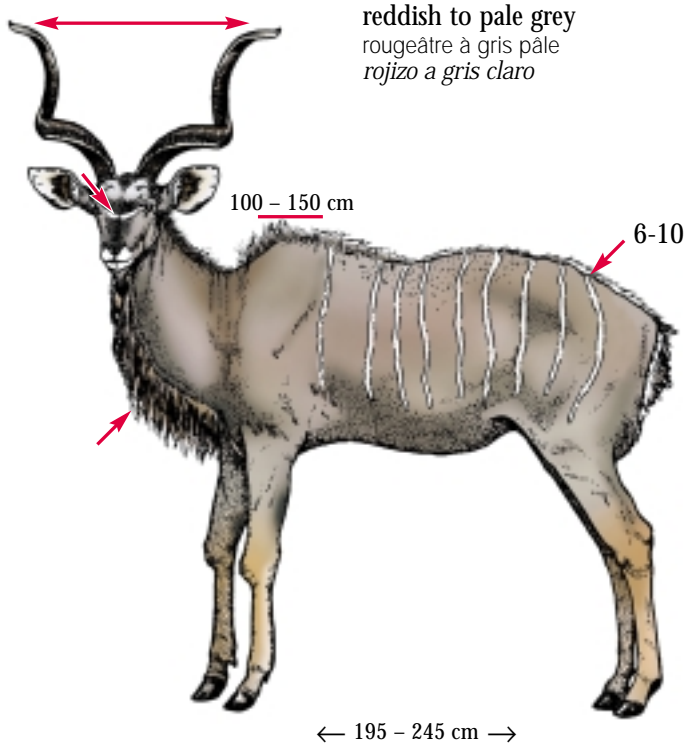


 *Tragelaphus imberbis*

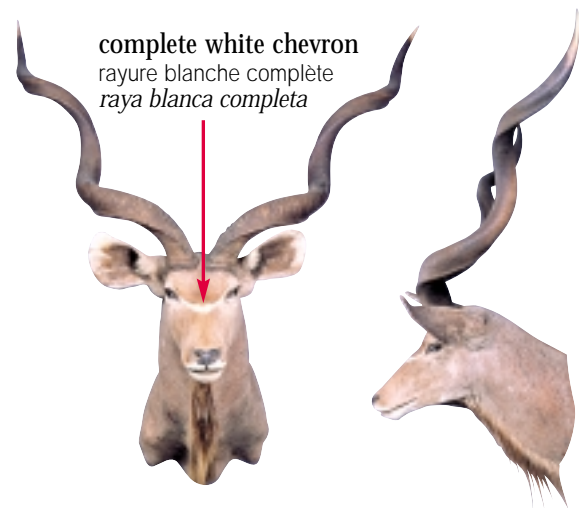


 *Tragelaphus imberbis*

 *Tragelaphus strepsiceros*



 *Tragelaphus strepsiceros*

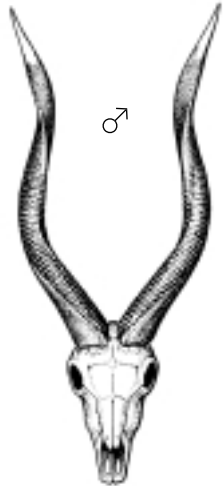


complete white chevron
 rayure blanche complète
 raya blanca completa



spiral horns
cornes en spirales
cuernos en espirales

Bongo, Marshbuck
Bongo, Sitatunga
Bongo, Sitatunga



♂

light coloured tip
extrémité de couleur pâle
punta de color claro

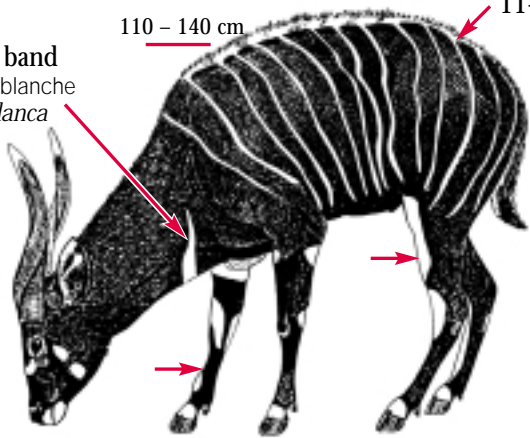
- Tragelaphus eurycerus**
- Tragelaphus speki**
- Tragelaphus scriptus**
- Tragelaphus angasii**
- Tragelaphus buxtoni**

body dark red brown
corps brun rouge foncé
cuerpo café rojo oscuro

1 white band
1 bande blanche
1 raya blanca

110 – 140 cm

11-16



← 170 – 250 cm →

L ≤ 100 cm
C ≤ 30.5 cm



complete white chevron
rayure blanche complète
raya blanca completa



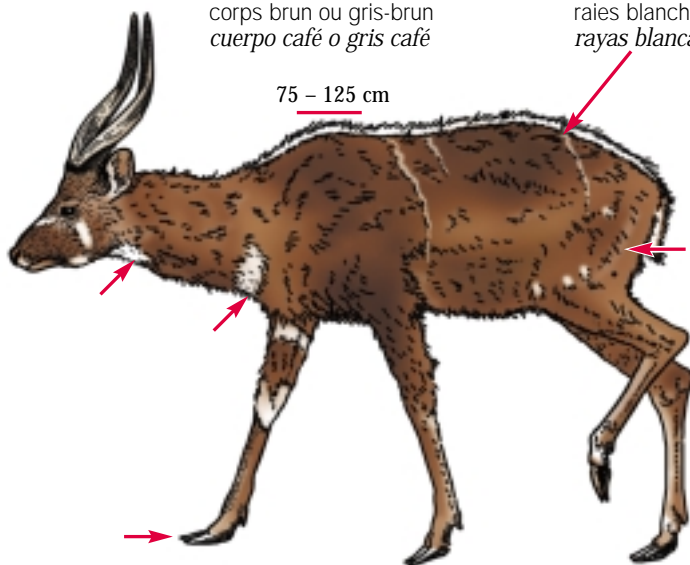
Tragelaphus eurycerus

body brown or grey-brown
corps brun ou gris-brun
cuerpo café o gris café

faint white stripes
raies blanches pâles
rayas blancas debiles

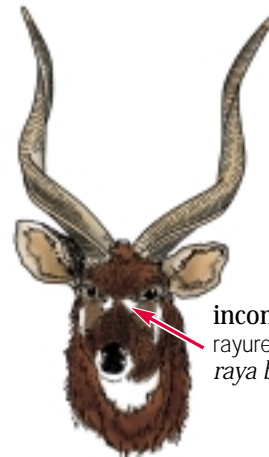
75 – 125 cm

L ≤ 84 cm
C ≤ 23 cm



long hair
poil long
pelo largo

← 115 – 175 cm →



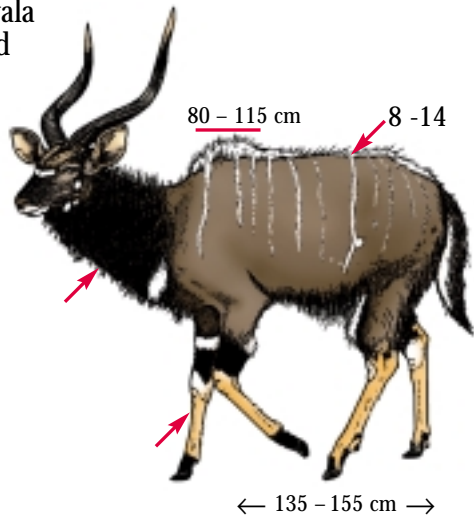
incomplete white chevron
rayure blanche incomplète
raya blanca incompleta

Tragelaphus speki

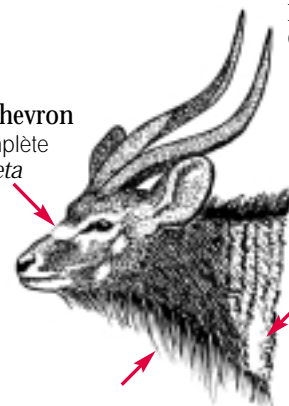
spiral horns
cornes en spirales
cuernos en espirales



Southern Nyala
Nyala du Sud
Nyala



complete white chevron
rayure blanche complète
raya blanca completa

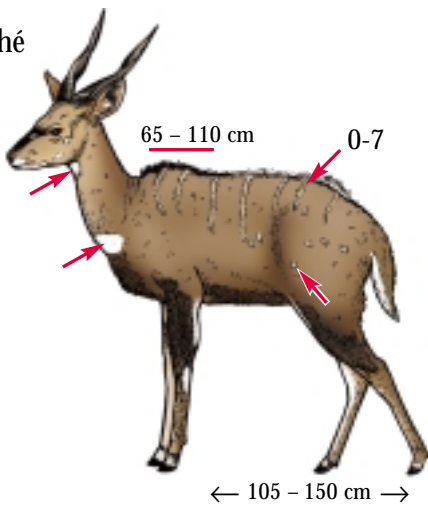


L ≤ 84 cm
C ≤ 22 cm

1 white band
1 bande blanche
1 raya blanca

 *Tragelaphus angasii*

Bushbuck
Guib harnaché
Guib



no white chevron or incomplete
sans rayure blanche ou incomplète
sin raya blanca o incompleta

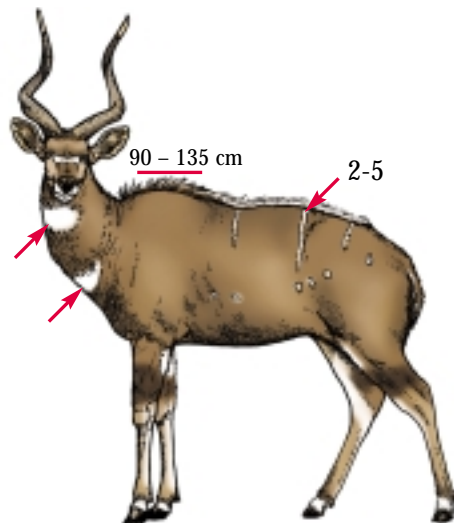
L ≤ 50 cm
C ≤ 16.5 cm

2 keels
2 quilles
2 aristas

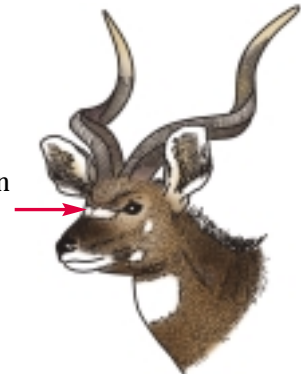


 *Tragelaphus scriptus*

Mountain Nyala
Nyala de montagne
Nyala de montaña



complete white chevron
rayure blanche complète
raya blanca completa



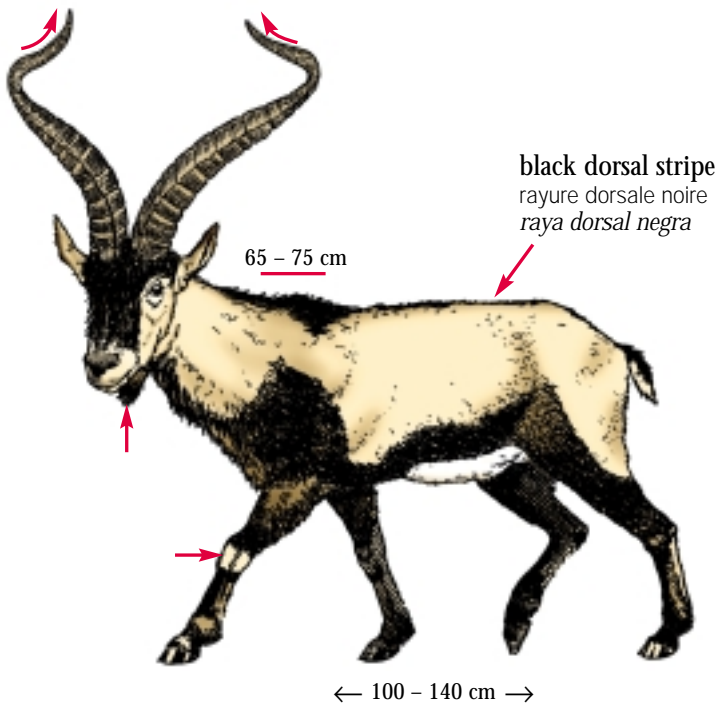
L ≤ 99 cm
C ≤ 22.5 cm

 *Tragelaphus buxtoni*



spiral horns
cornes en spirales
cuernos en espirales


Spanish Ibex, Feral Goat
Bouquetin d'Espagne, Chèvre sauvage
Cabra hispanica, Cabra cimarron



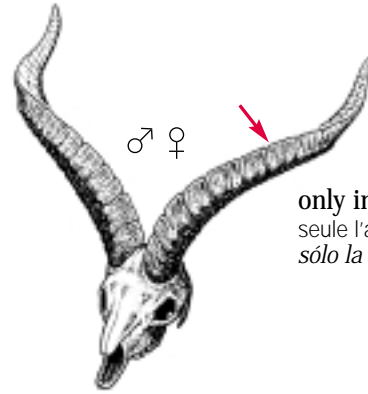
black dorsal stripe
rayure dorsale noire
raya dorsal negra

65 - 75 cm

← 100 - 140 cm →

 Capra pyrenaica

 ES



only inner edge sharp
seule l'arête interne est aigüe
sólo la arista interna es aguda

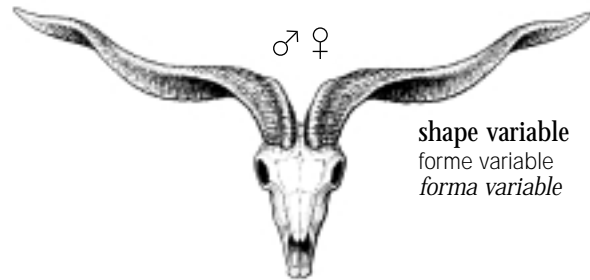


colour variable
couleur variable
color variable



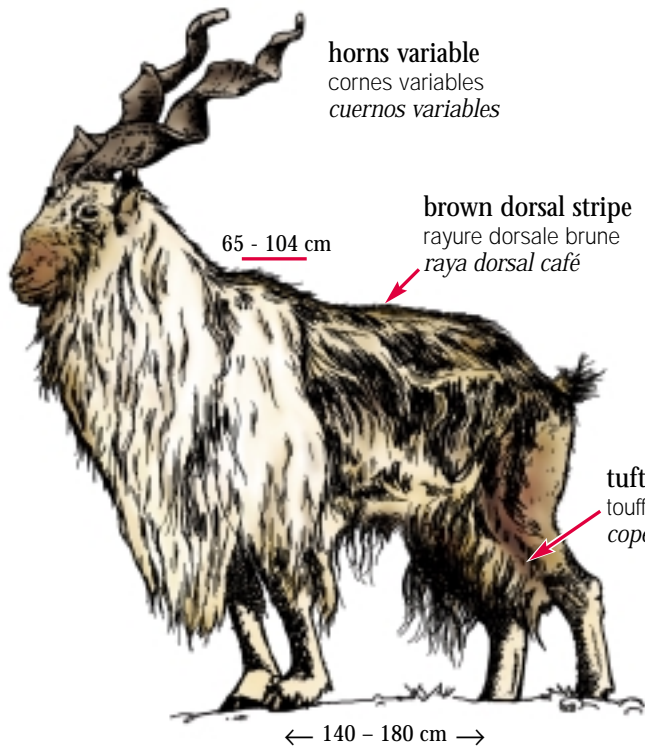
← 120 - 160 cm →


 Capra hircus



shape variable
forme variable
forma variable






 Capra falconeri



 Capra falconeri cashmiriensis



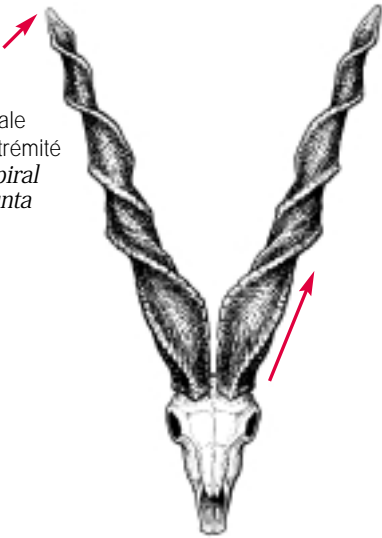
 Capra falconeri



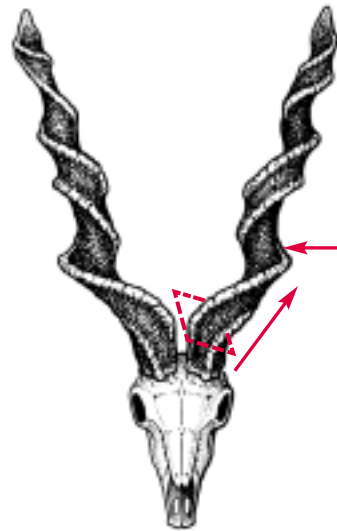
spiral horns
cornes en spirales
cuernos en espirales

Markhor

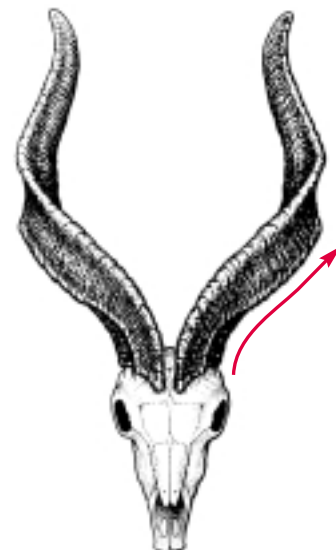
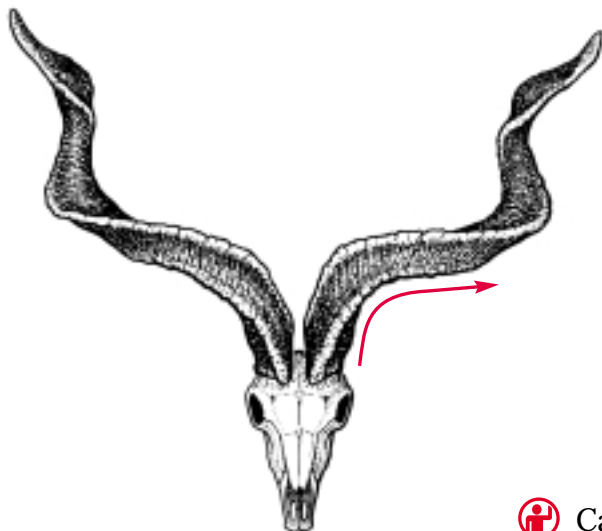
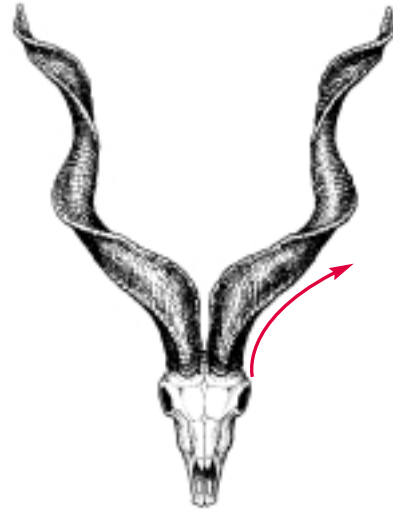
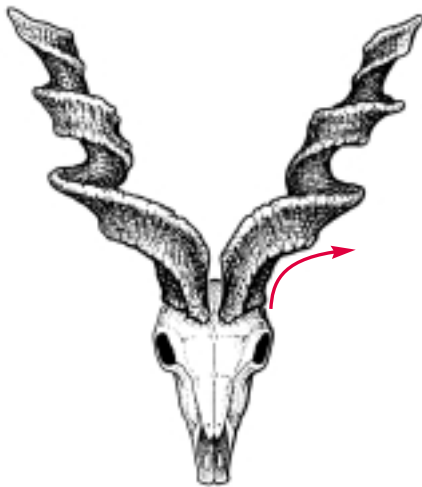
spiral ridge
to tip
crête en spirale
jusqu'à l'extrémité
cresta en espiral
hasta la punta




all edges sharp
toutes les arêtes aigües
todas las aristas agudas



striated
striée
estriado



♂ ♀

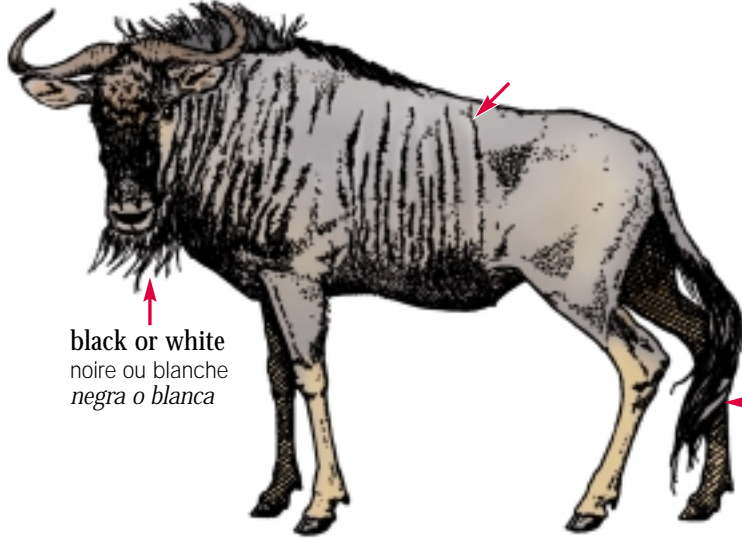
 Capra falconeri

lateral, top
latérales, dessus
laterales, parte superior



Blue Wildebeest
Gnou à queue noire
Nu común

100 - 145 cm

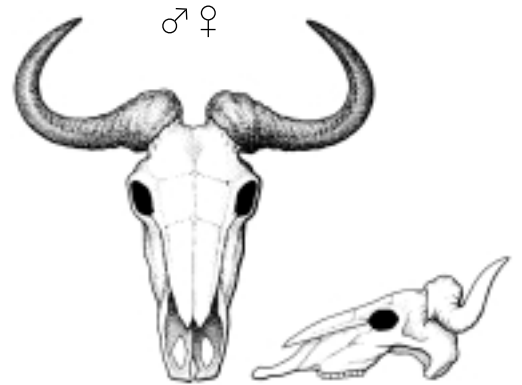


black or white
noire ou blanche
negra o blanca

black
noire
negra

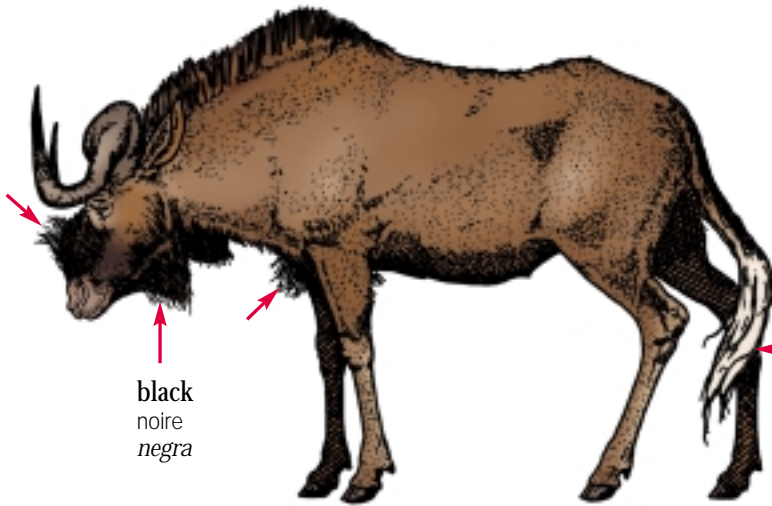
← 150 - 240 cm →

 *Connochaetes taurinus*



Black Wildebeest
Gnou à queue blanche
Nu negro

100 - 145 cm



black
noire
negra

white
blanche
blanca

← 150 - 240 cm →

 *Connochaetes gnou*



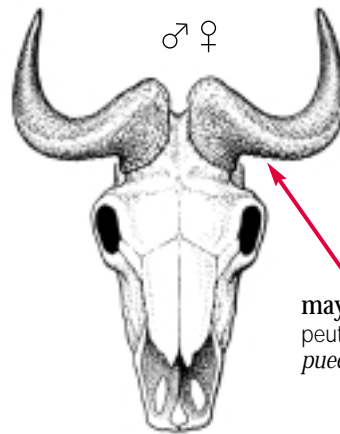
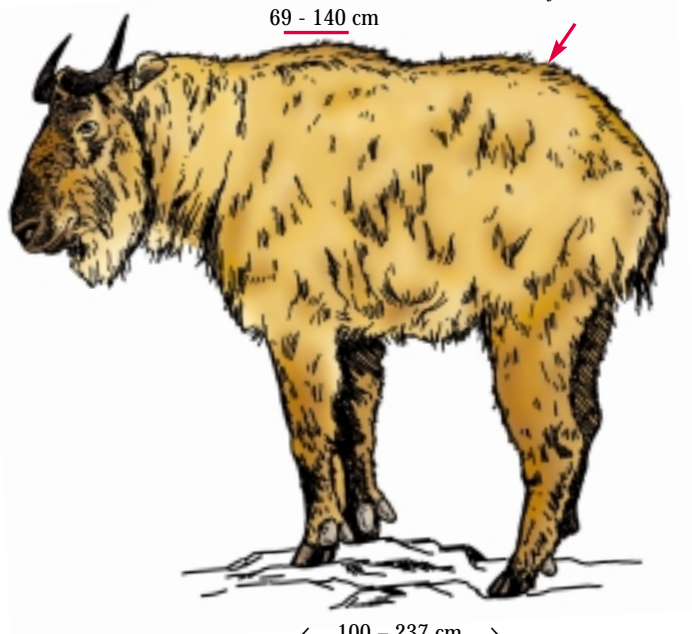


lateral, top
latérales, dessus
laterales, parte superior

Takin

body yellowish to dark brown
corps jaunâtre à brun foncé
cuerpo amarillento a café oscuro

dark stripe along back
rayure foncée le long du dos
raya oscura a lo largo de la espalda



L ≤ 63.5 cm
C ≤ 33 cm

may be ribbed at base
peut être cannelée à la base
puede ser acanalado en la base

 Budorcas taxicolor

lateral, top
latérales, dessus
laterales, parte superior

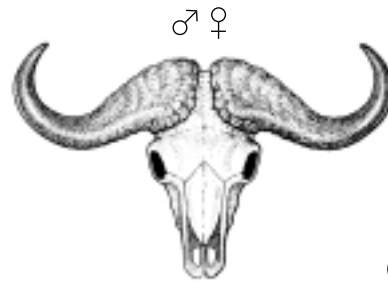



Cape Buffalo
Buffle du Cap
Bufalo del Cabo

100 - 170 cm



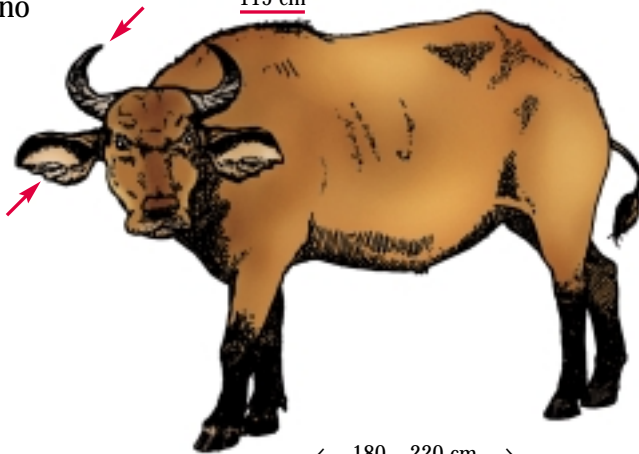
← 210 - 340 cm →



 Syncerus caffer caffer


Dwarf Forest Buffalo
Buffle nain
Bufalo enano

115 cm



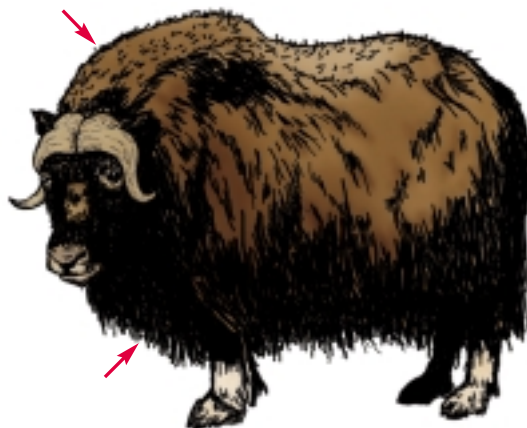
← 180 - 220 cm →



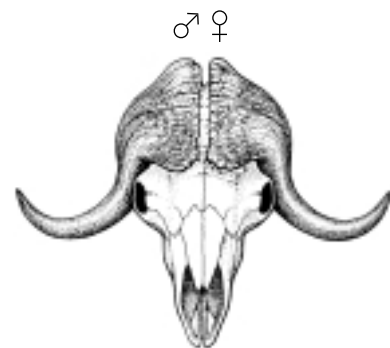
 Syncerus caffer nanus


Muskox
Boeuf musqué
Buey amizclero

120 - 151 cm



← 190 - 230 cm →

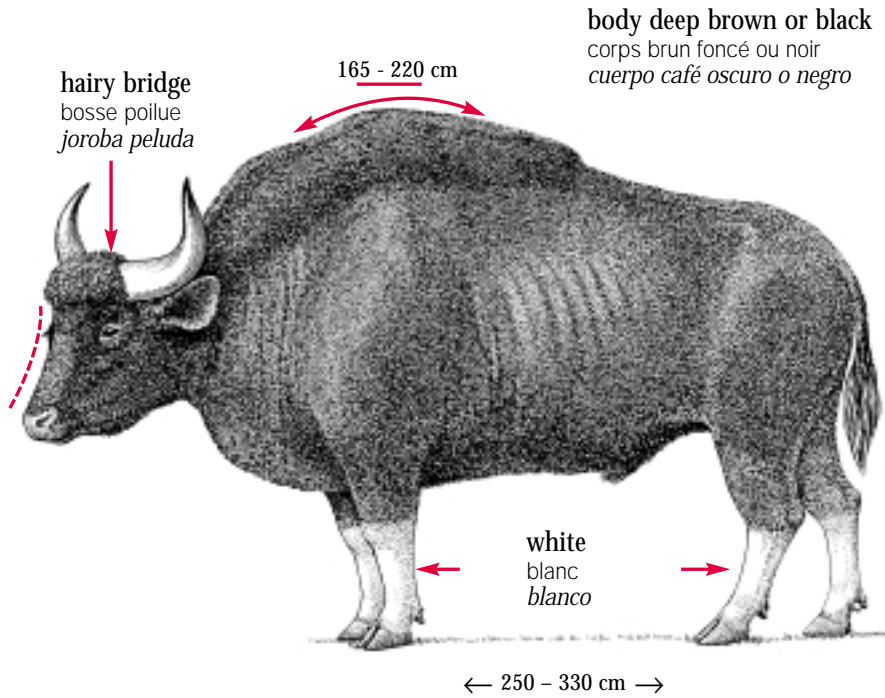


 Ovibos moschatus

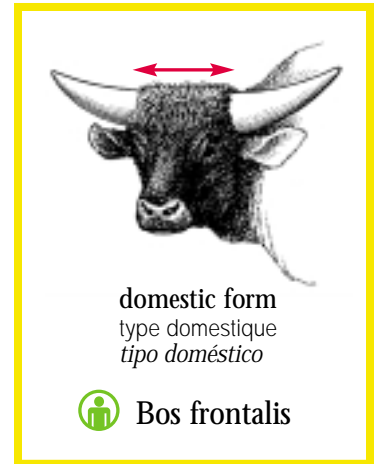


lateral, sides
latérales, côtés
laterales, los lados

Gaur



body deep brown or black
corps brun foncé ou noir
cuerpo café oscuro o negro

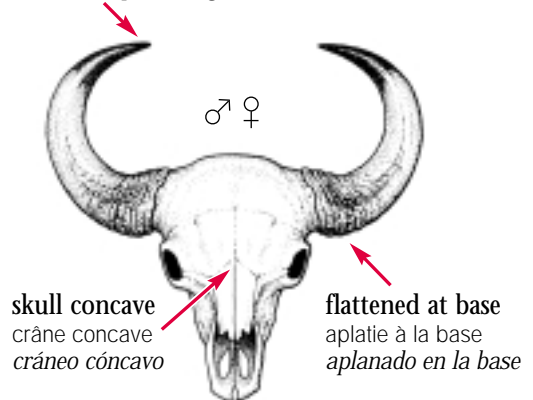



Size of bump and horns varies with the sub-species.
La taille de la bosse et des cornes varie selon la sous-espèce.
El tamaño de la joroba y de los cuernos varia con la subespecie.



yellow with black tip
jaune avec l'extrémité noire
amarillo con la punta negra

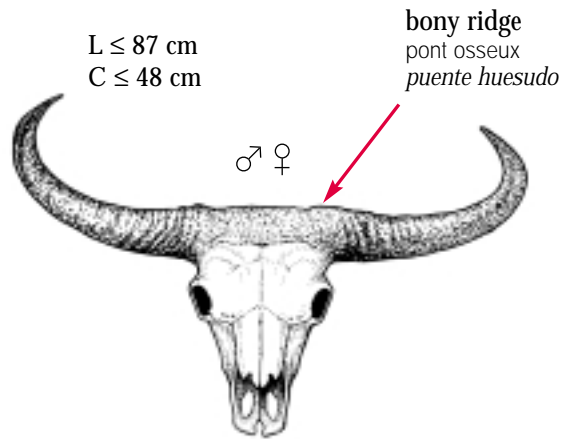
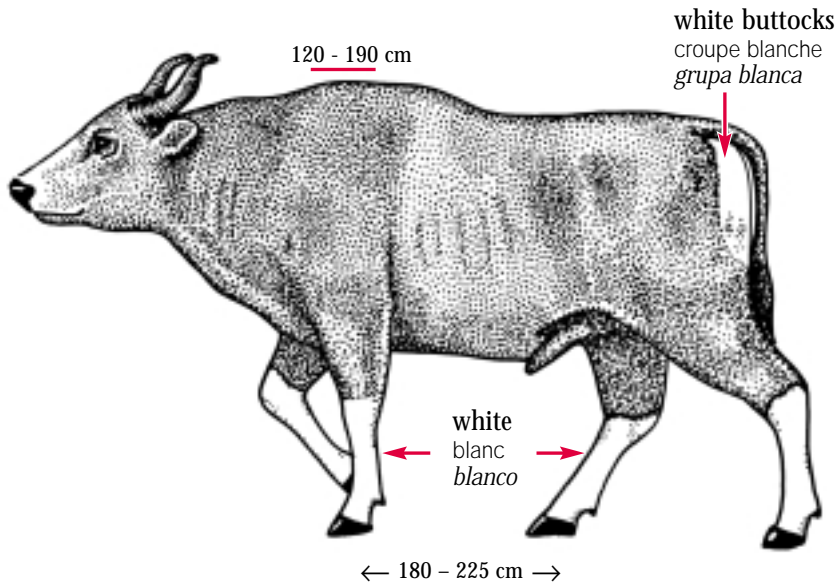
L ≤ 95 cm
C ≤ 56 cm




 Bos gaurus



♂ dark brown to black
brun foncé à noir
café oscuro a negro



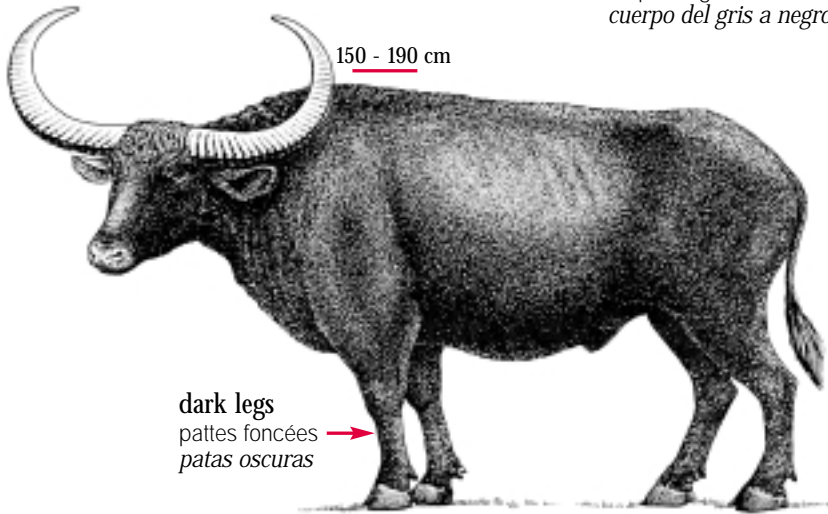
 **Bos javanicus**



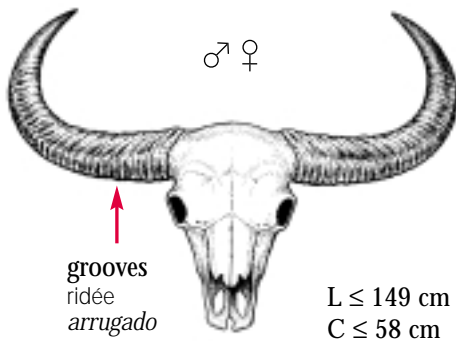
lateral, sides
latérales, côtés
laterales, los lados

Wild Asiatic Buffalo
Buffle de l'Inde
Búfalo arni

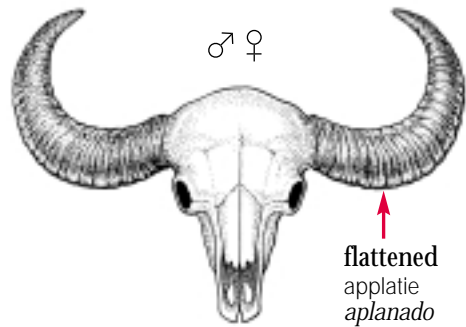
body grey to black
corps du gris au noir
cuerpo del gris a negro





← 240 - 300 cm →



or
ou
o



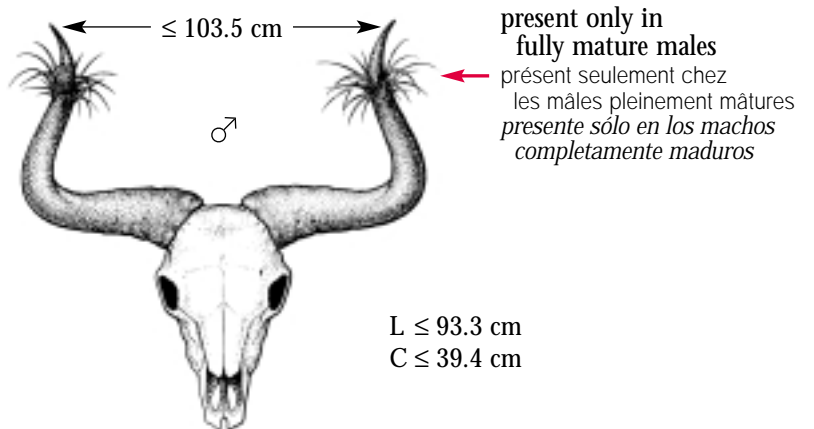
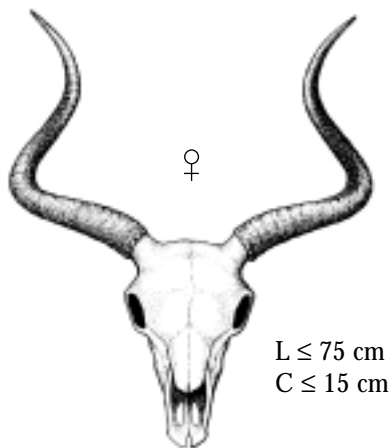
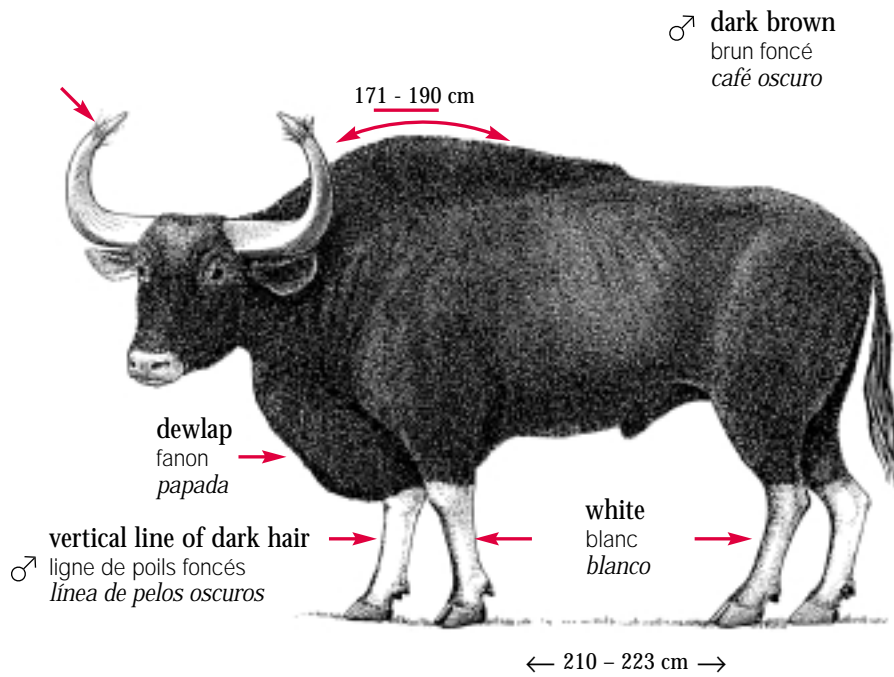
 Bubalus arnee


 Bubalus arnee - domestic*
domestique*
doméstico*

*The domestic form is smaller with variable white markings on body

* La forme domestique est plus petite avec des taches blanches variables sur le corps

* La forma doméstica es más pequeña y tiene manchas blancas y variables

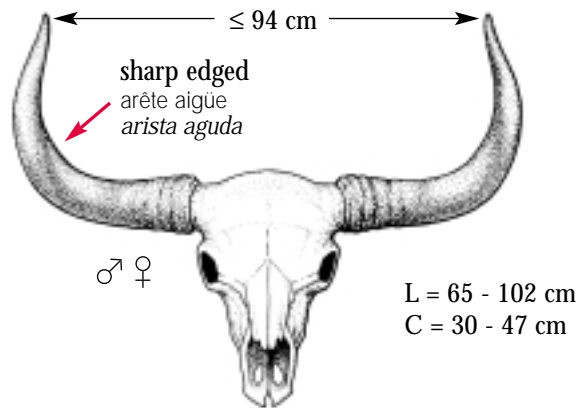
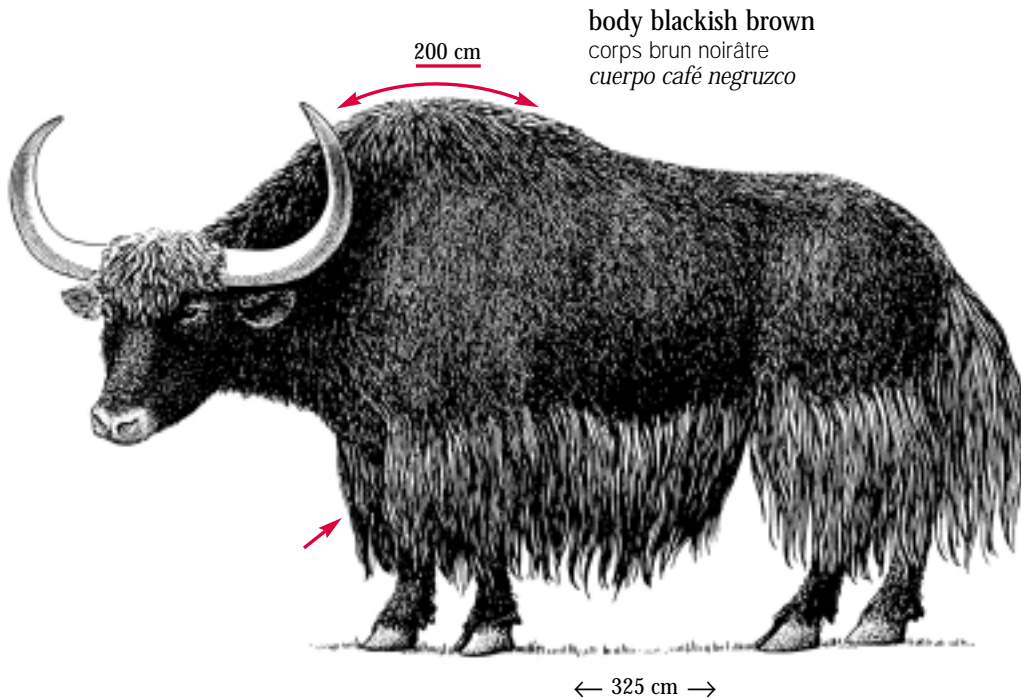



 Bos sauveli




lateral, sides
latérales, côtés
laterales, los lados

Wild Yak
Yack sauvage
Yak salvaje



 Bos mutus

 Bos grunniens - domestic*
domestique*
doméstico*

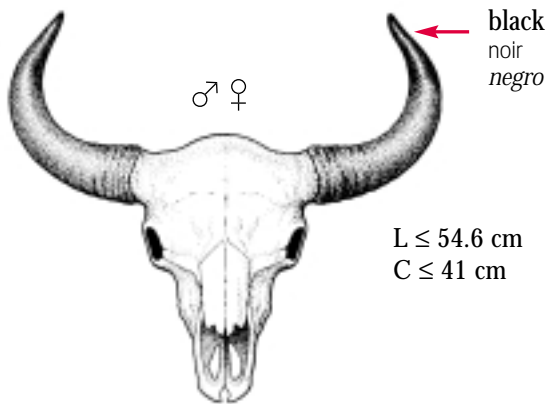
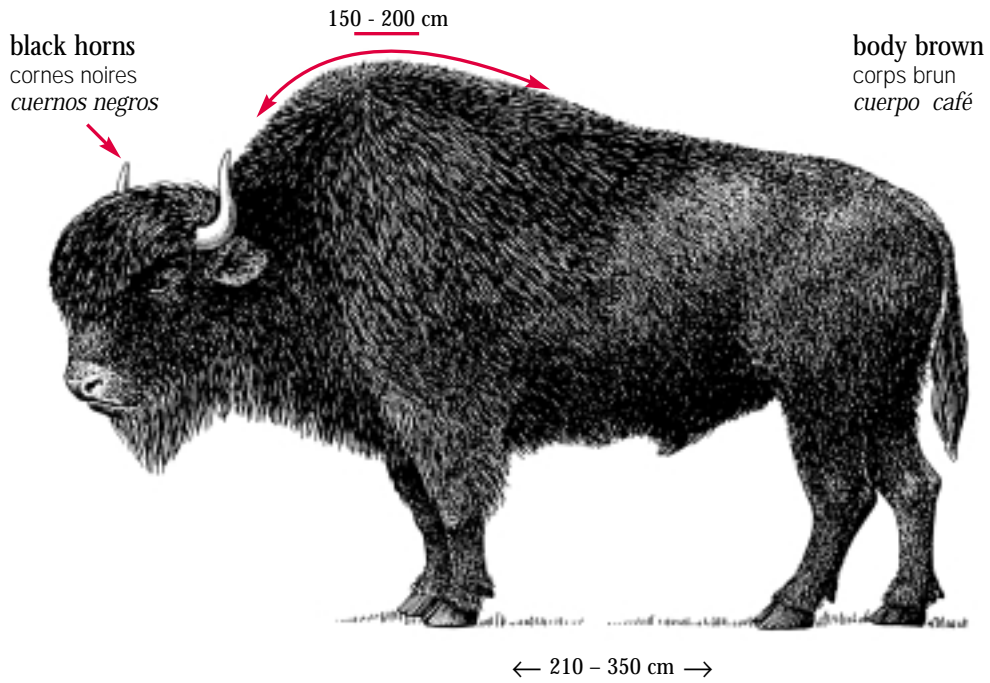
* Domestic form smaller with varying colours; white spots on chest and tail; horns slimmer and shorter.


* Le type domestique est plus petit et présente des couleurs différentes, avec des taches blanches sur la poitrine et la queue; cornes beaucoup plus minces et plus courtes.


* El tipo doméstico es más chico y tiene colores diferentes, con manchas blancas en el pecho y en la cola; cuernos mucho más delgados y más cortos.

Bison
Bison
Bisonte

lateral, sides
latérales, côtés
laterales, los lados



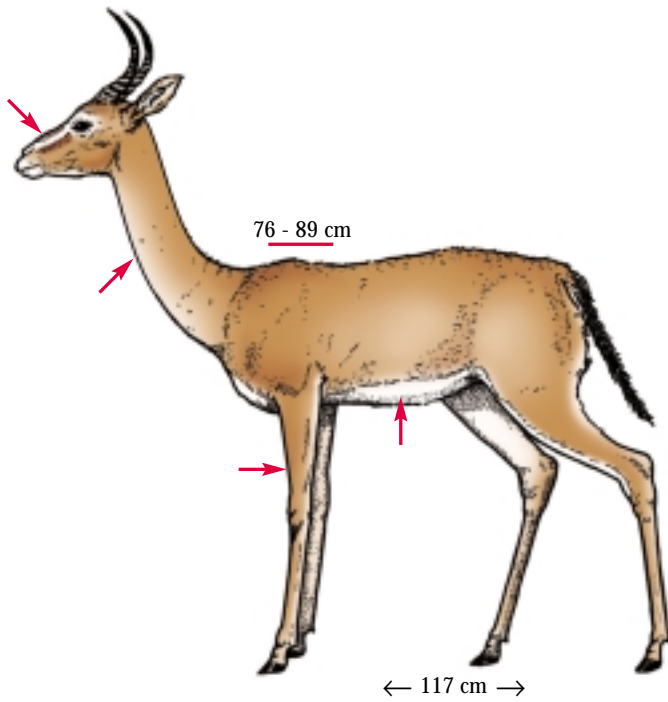
 Spp. BOV - 1 → **1**

 Spp. BOV - 2, 3



curved forward
 recourbées vers l'avant
 encorvados hacia adelante

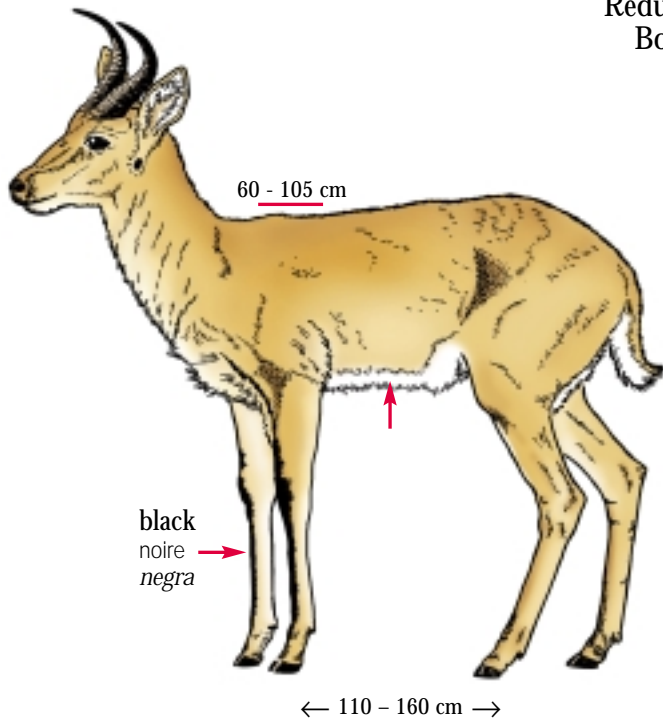
Dibatag
 Dibatag
 Antilope de Clarke



Ammodorcas clarkei

Bohar Reedbuck
 Redunca
 Bohor

Southern Reedbuck
 Cobe des roseaux
 Antilope de los canaverales

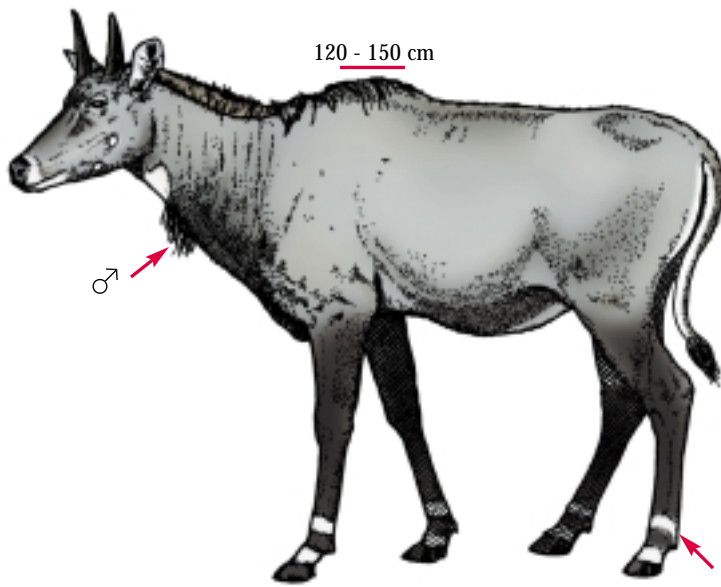
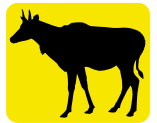


Redunca redunca

Redunca arundinum

Nilgai
Nilgaut
Nilgo

curved forward
recourbées vers l'avant
encorvados hacia adelante

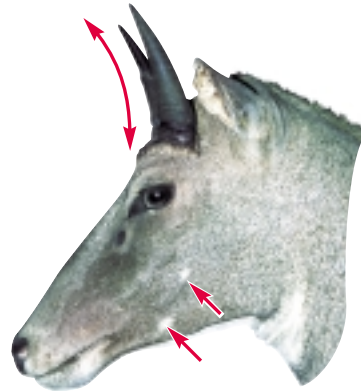


120 - 150 cm

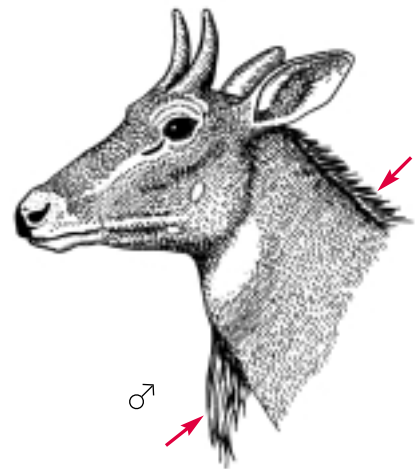
← 180 - 210 cm →




L = 15 - 24 cm



2 white spots
2 taches blanches
2 manchas blancas

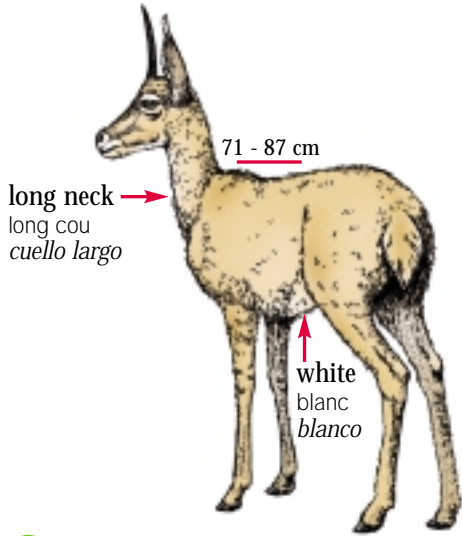


 *Boselaphus tragocamelus*



curved forward
 recourbées vers l'avant
 encorvados hacia adelante

Rhebok



horns vertical
 cornes verticales
 cuernos verticales

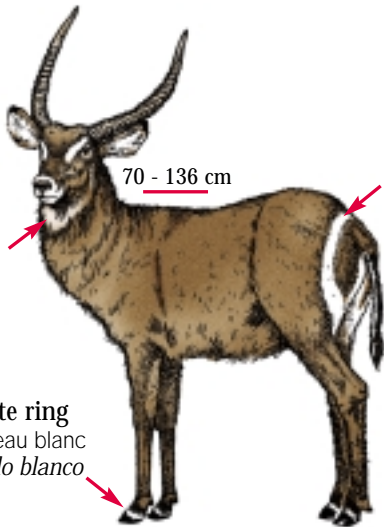


long ears
 grandes oreilles
 orejas largas



Pelea capreolus

← 115 - 125 cm →

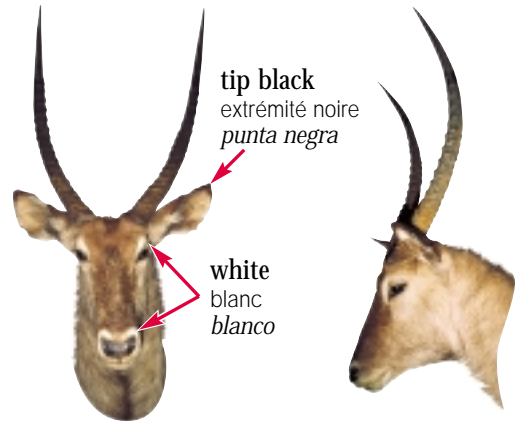


Common Waterbuck
 Cobe à croissant
 Antilope acuatico común



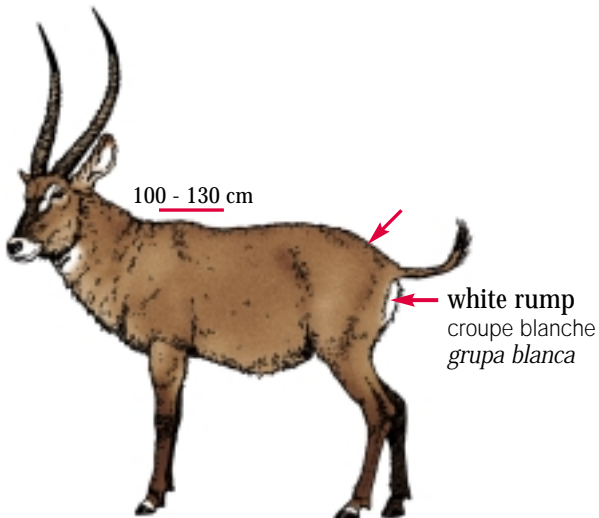
tip black
 extrémité noire
 punta negra

white
 blanc
 blanco

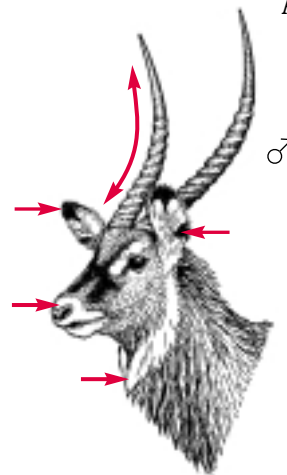


Kobus ellipsiprymnus

← 125 - 235 cm →

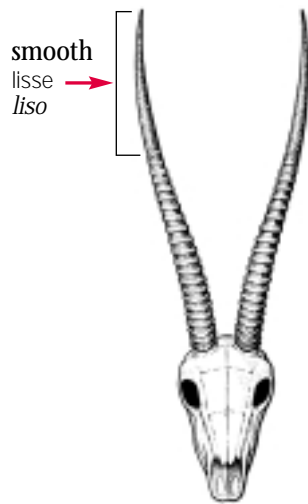
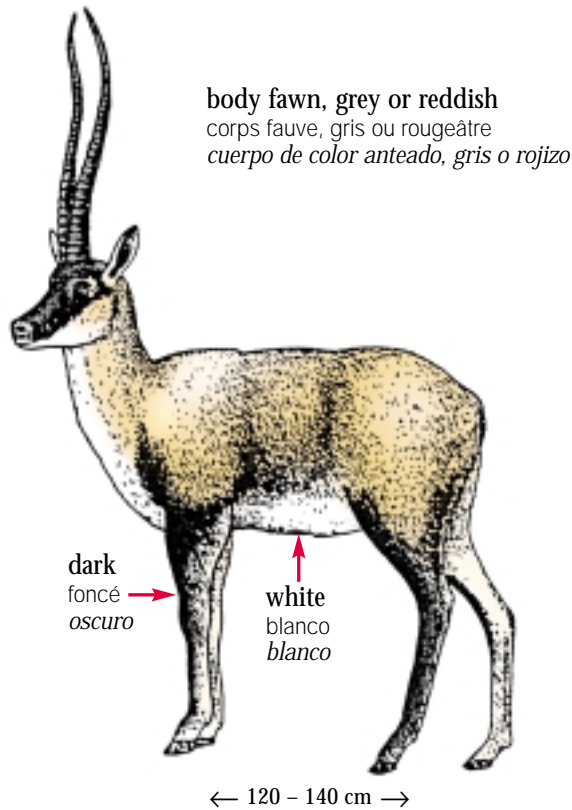


Defassa Waterbuck
 Cobe defassa
 Antilope acuatico defassa

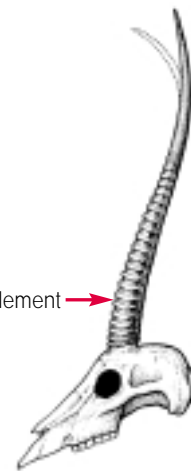


Kobus defassa

← 180 - 220 cm →



rings in front only
anneaux à l'avant seulement
anillos solo en frente



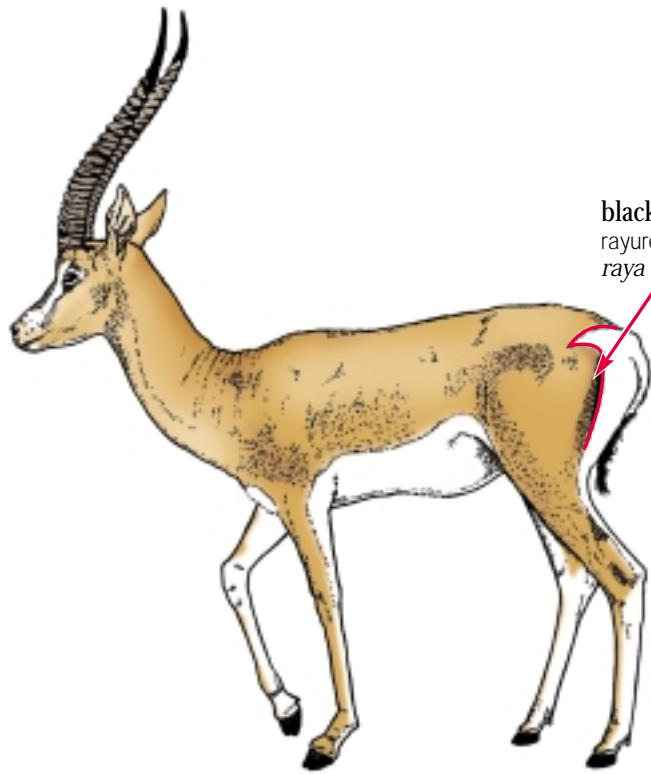
Illegally hunted principally for its fur which is used to produce an extremely fine wool called Shahtoosh.
Chassé illégalement principalement pour sa fourrure utilisée dans la fabrication d'un lainage fin appelé Shahtoosh.
Cazado ilegalmente principalmente por su piel que sirve para producir una lana fina llamada Shahtoosh.



S-shaped
en "S"
en "S"

Gazelles
Gazelles
Gacelas

Gazella Spp.: ← 85 - 170 cm →, 50 - 110 cm



black band
rayure noire
raya negra

 **Gazella granti**

ringed
annelée
con anillos

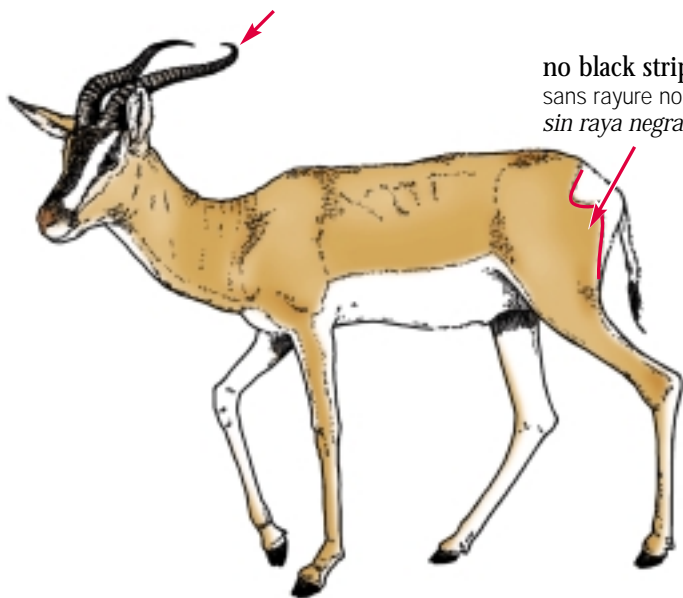


white
blanc
blanco




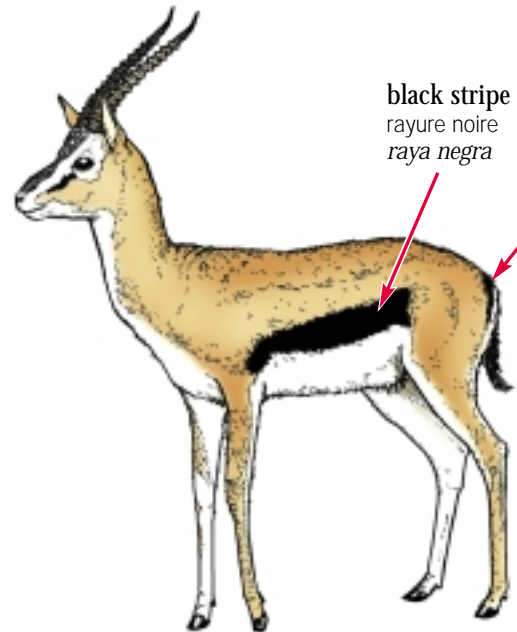
♂ ♀

shape variable
forme variable
forma variable




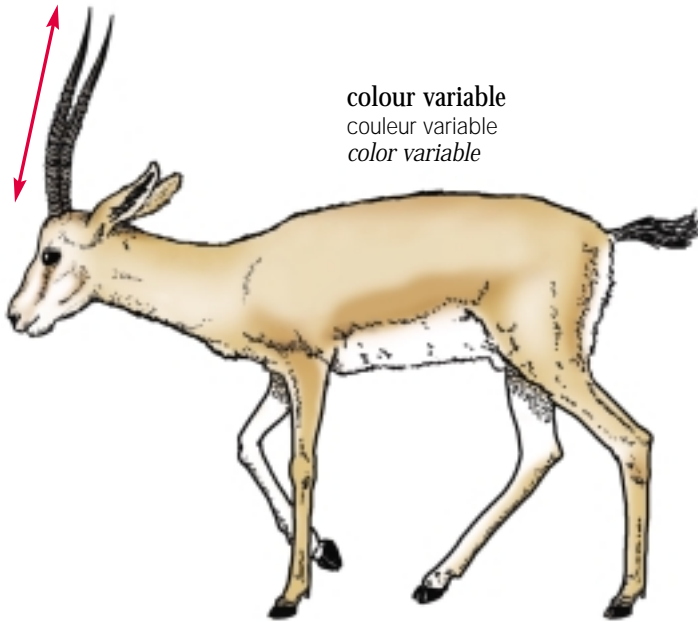
no black stripe
sans rayure noire
sin raya negra

 **Gazella soemmerringii**



black stripe
rayure noire
raya negra


 **Gazella thomsonii**

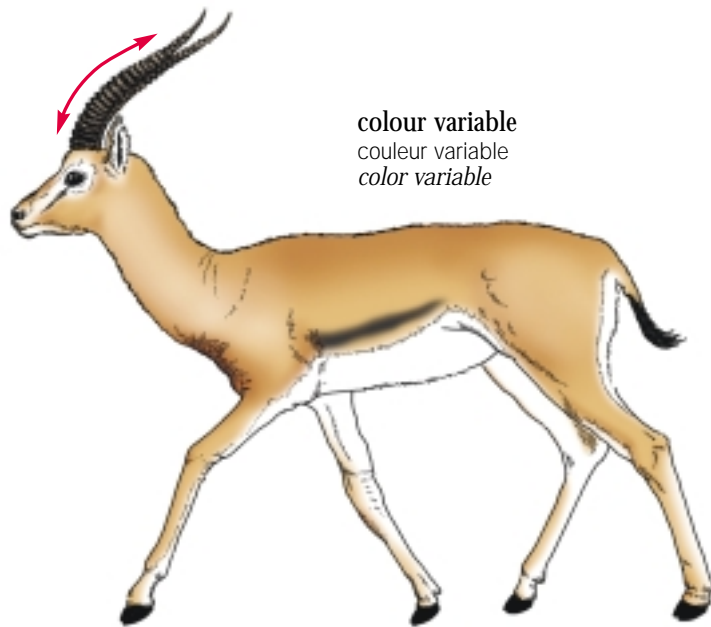


colour variable
couleur variable
color variable


 **Gazella leptoceros**




 **Gazella subgutturosa**



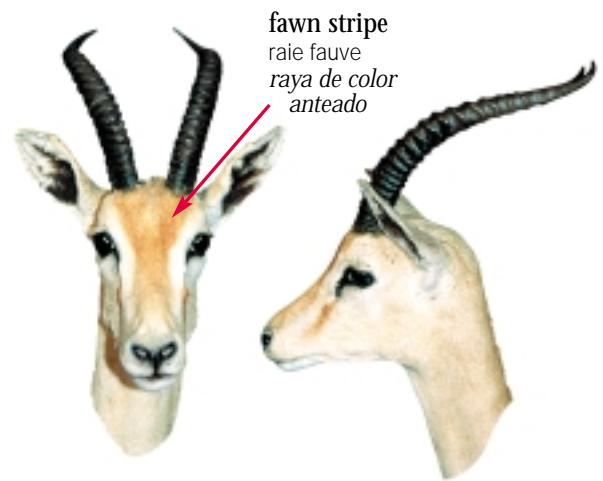
colour variable
couleur variable
color variable

 Spp. BOV - 9


1

 Spp. BOV - 6, 7, 8, 11 → 14

1



fawn stripe
raie fauve
raya de color
anteado

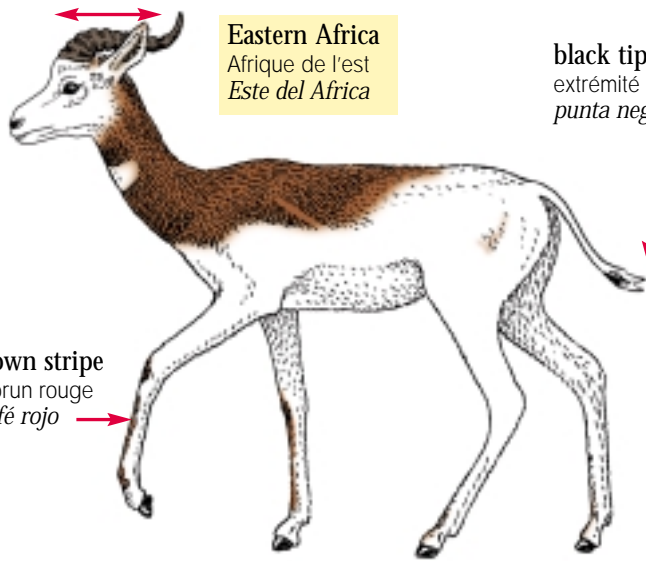
 Spp. BOV - 10

1



S-shaped
en "S"
en "S"

Dama Gazelle, Springbok
Gazelle dama, Springbok
Gacela dama, Springbok



Eastern Africa
Afrique de l'est
Este del Africa

black tip
extrémité noire
punta negra

red-brown stripe
rayure brun rouge
raya café rojo



head white
tête blanche
cabeza blanca




Western Africa
Afrique de l'ouest
Oeste del Africa

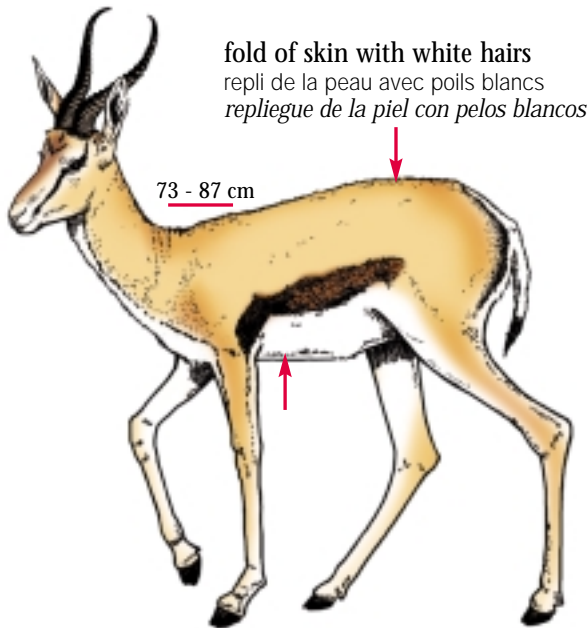


Central Africa
Afrique centrale
Africa central



 Gazella dama

see also / voir aussi / véase también  Procacra Spp. 56



fold of skin with white hairs
repli de la peau avec poils blancs
repliegue de la piel con pelos blancos

73 - 87 cm

← 120 - 140 cm →



black form
forme noire
forma negra

 Antidorcas marsupialis

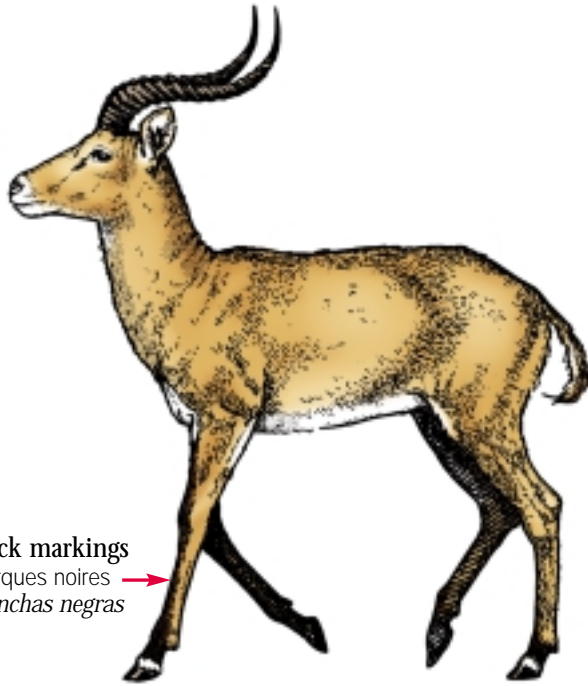
see also / voir aussi / véase también  Procacra Spp. 56

Uganda Kob, White-eared Kob
Cobe de Thomas, Cobe aux oreilles blanches
Kobo de Thomas, Kobo de orejas blancas

S-shaped
en "S"
en "S"

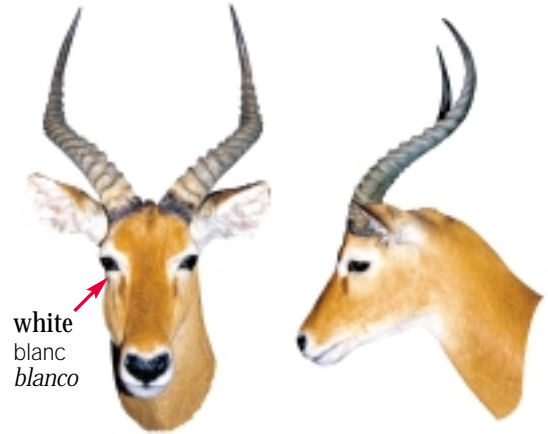


Kobus Spp.: ← 125 - 235 cm →, 70 - 136 cm




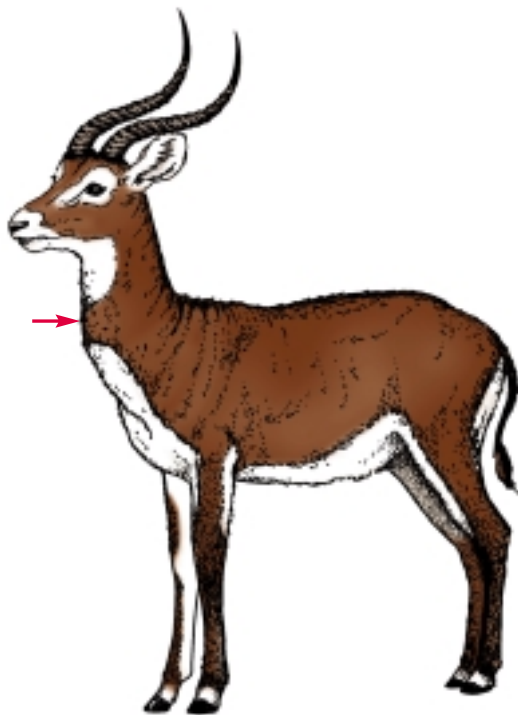
black markings
marques noires
manchas negras

L < 66 cm
C < 19 cm

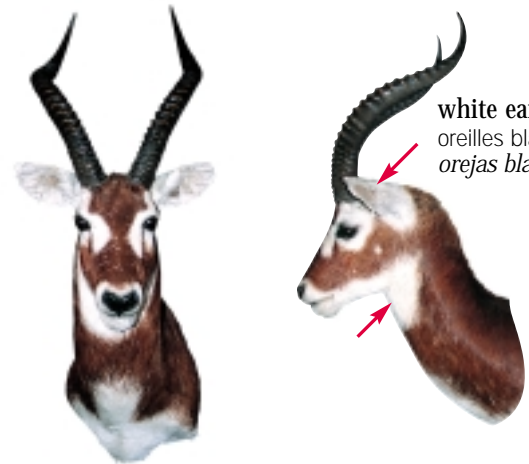


white
blanc
blanco

 Kobus kob thomasi



L < 61 cm
C < 20 cm



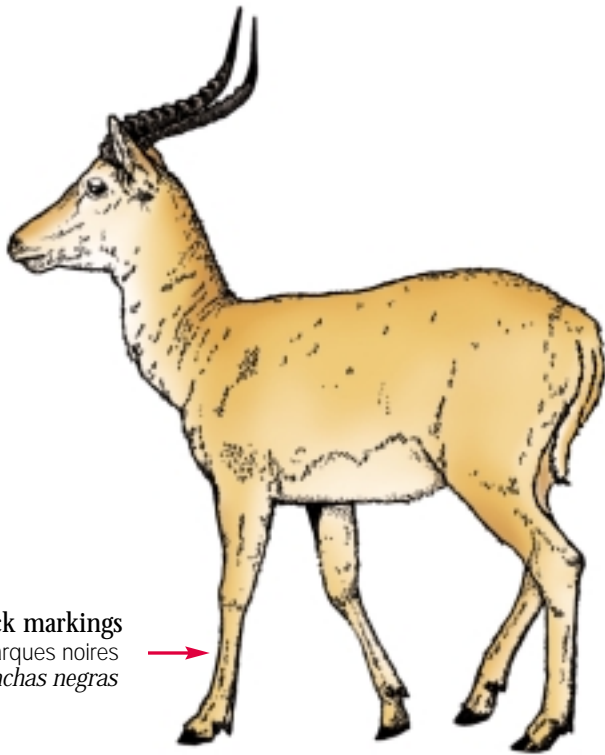
white ears
oreilles blanches
orejas blancas

 Kobus kob leucotis



S-shaped
en "S"
en "S"

Puku, Nile Lechwe
Puku, Lechwe du Nil
Puku, Lechwe del Nilo




no black markings
sans marques noires
sin manchas negras



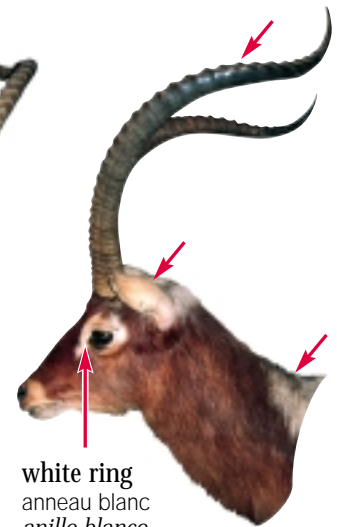
L < 56 cm
C < 20 cm




 **Kobus vardonii**



L < 87 cm
C < 19 cm

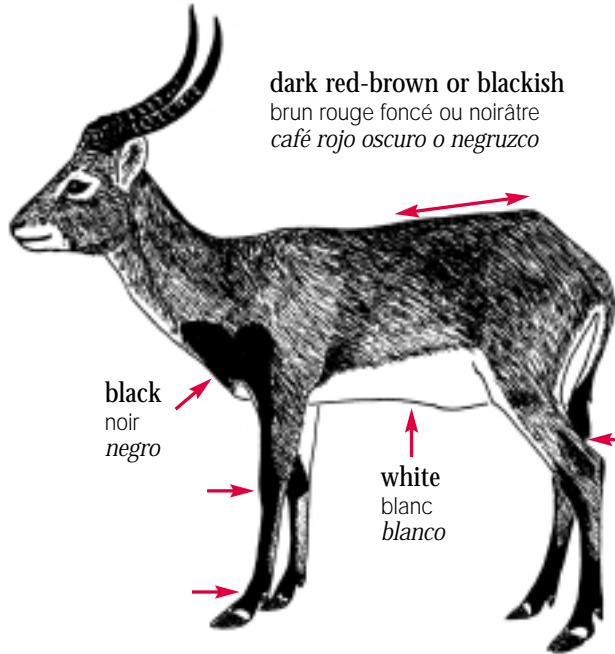


white ring
anneau blanc
anillo blanco

 **Kobus megaceros**



L < 94 cm
C < 27.5 cm



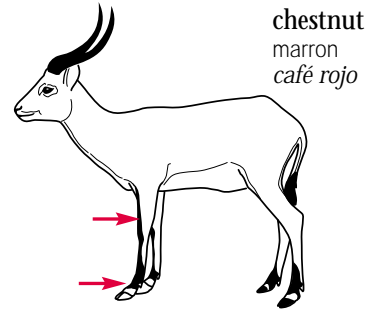
dark red-brown or blackish
brun rouge foncé ou noirâtre
café rojo oscuro o negruzco

black
noir
negro


white
blanc
blanco

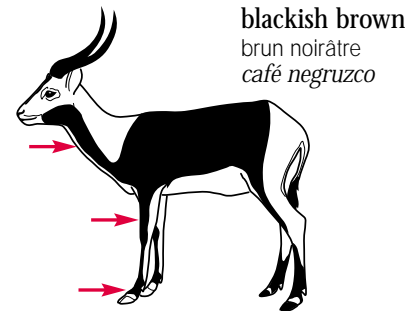
black tip
extrémité noire
punta negra

 Kobus leche kufuensis



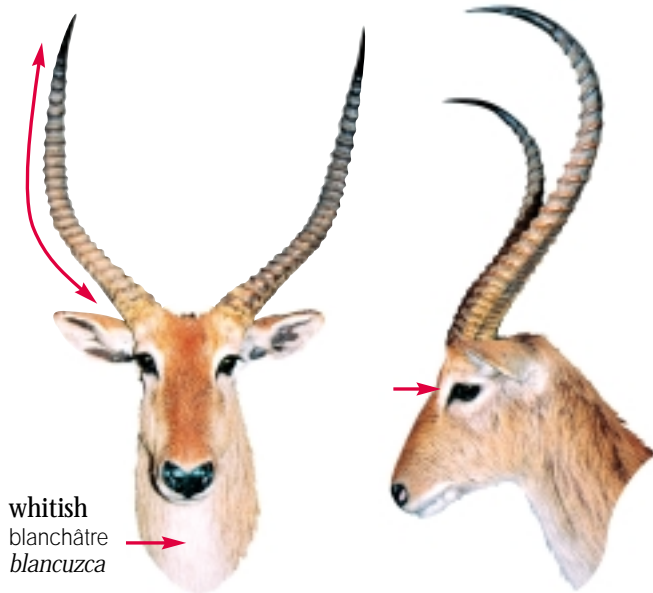
chestnut
marron
café rojo

 Kobus leche leche



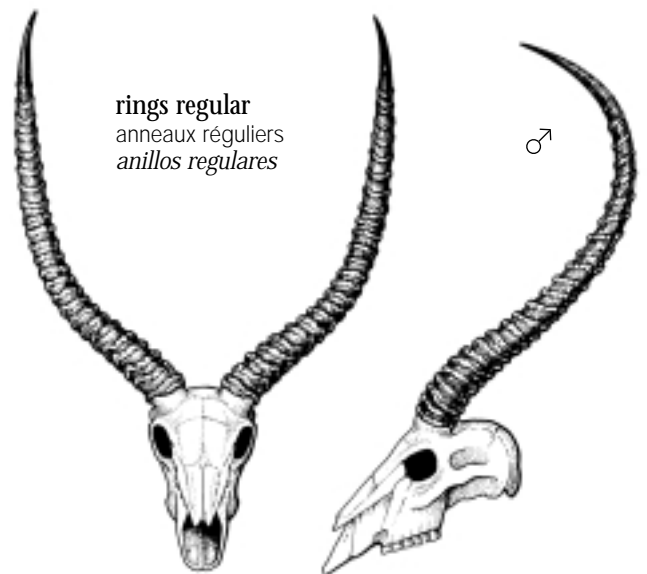
blackish brown
brun noirâtre
café negruzco

 Kobus leche smithemani





whitish
blanchâtre
blancuzca

 Kobus leche kufuensis



rings regular
anneaux réguliers
anillos regulares

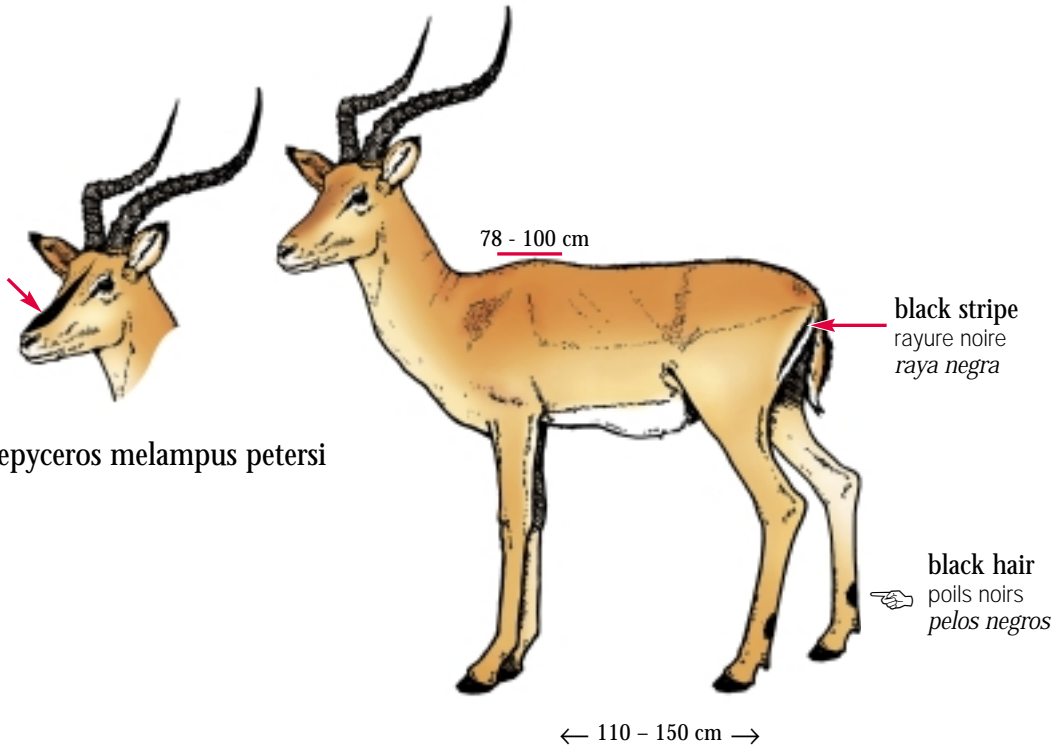
 Kobus leche

 Kobus Spp.

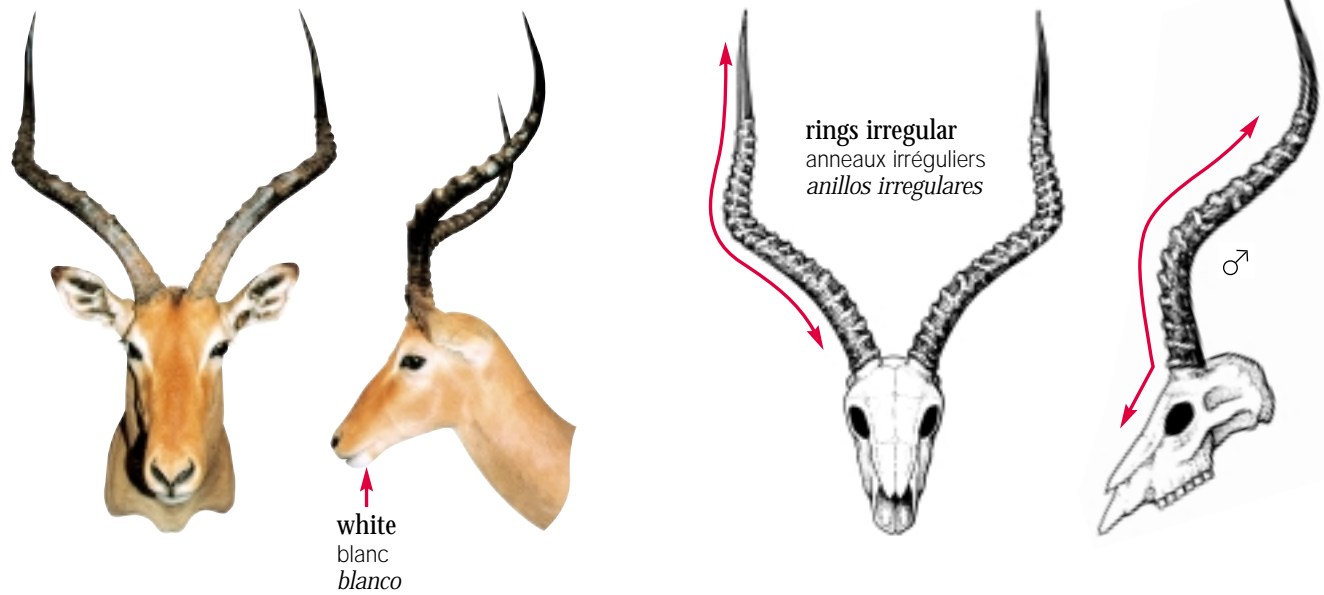


S-shaped
en "S"
en "S"

Impala



Aepyceros melampus petersi

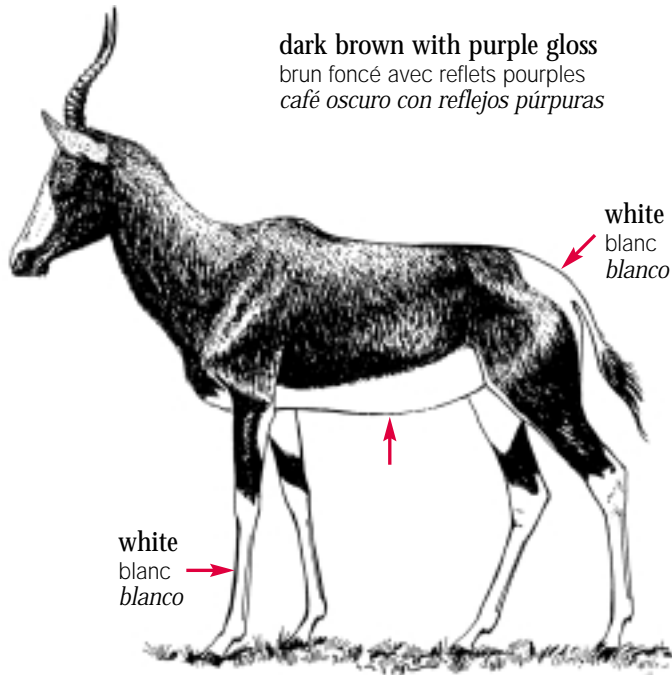


Aepyceros melampus



Damaliscus Spp.: ← 120 - 205 cm →, 88 - 134 cm

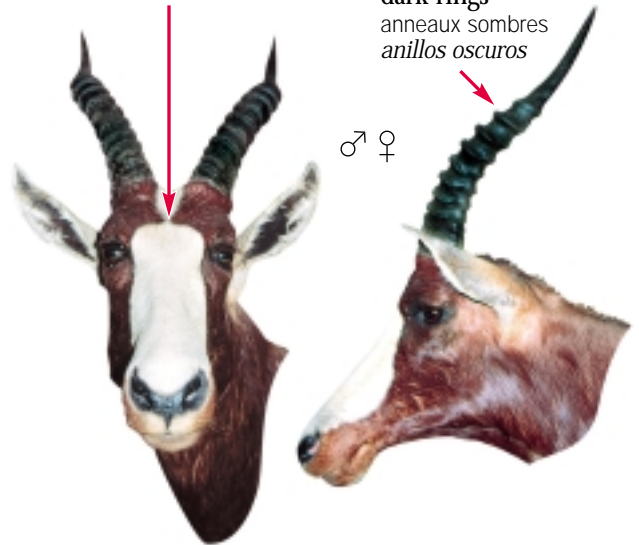
L < 43 cm
C < 18.5 cm



dark brown with purple gloss
brun foncé avec reflets pourpres
café oscuro con reflejos púrpuras

usually no horizontal band
habituellement sans bande horizontale
generalmente sin raya horizontal

dark rings
anneaux sombres
anillos oscuros

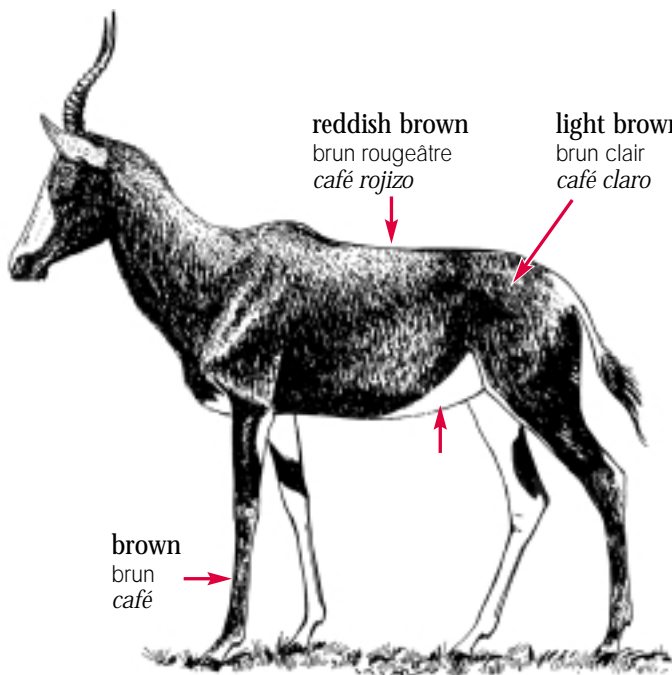


white
blanc
blanco

white
blanc
blanco

Damaliscus pygargus pygargus

L < 53 cm
C < 18.5 cm

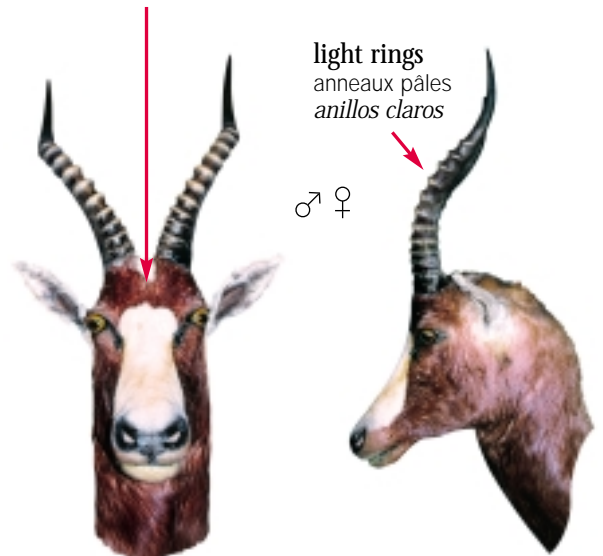


reddish brown
brun rougeâtre
café rojizo

light brown
brun clair
café claro

horizontal band
bande horizontale
raya horizontal

light rings
anneaux pâles
anillos claros

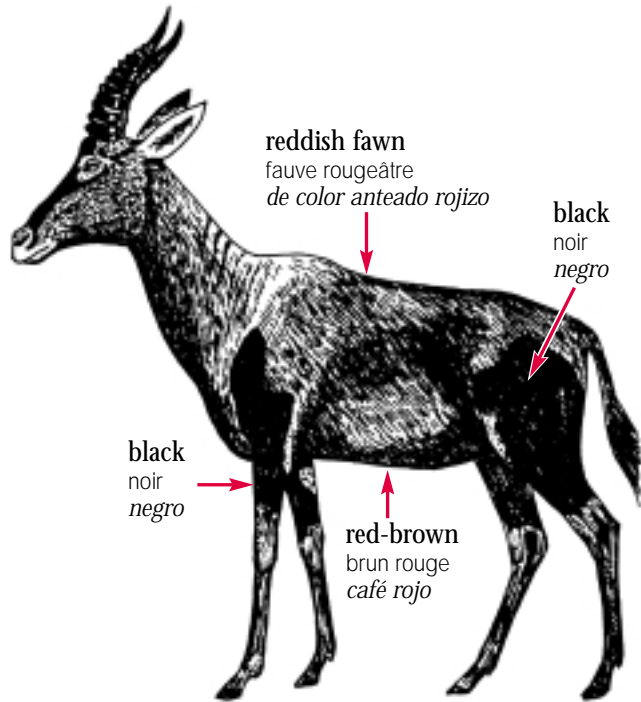


brown
brun
café

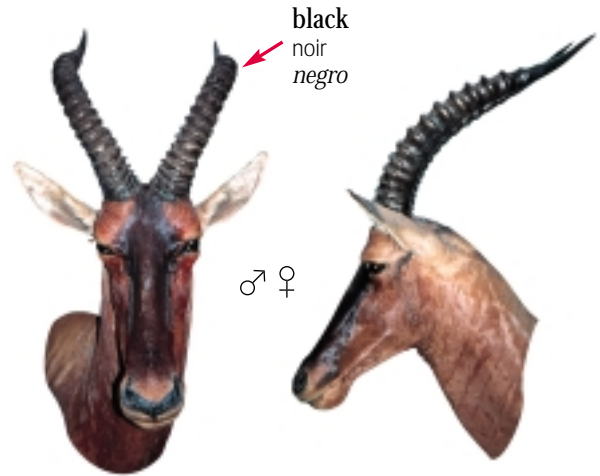
Damaliscus pygargus phillipsi



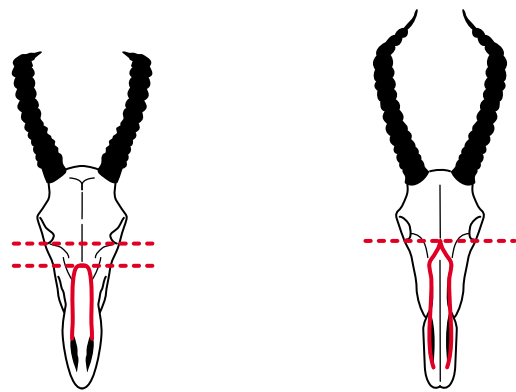
L < 84 cm
C < 25 cm



Damaliscus lunatus



Damaliscus lunatus



Damaliscus lunatus

Damaliscus pygargus

♂ ♀



♂ ♀



see also / voir aussi / véase también

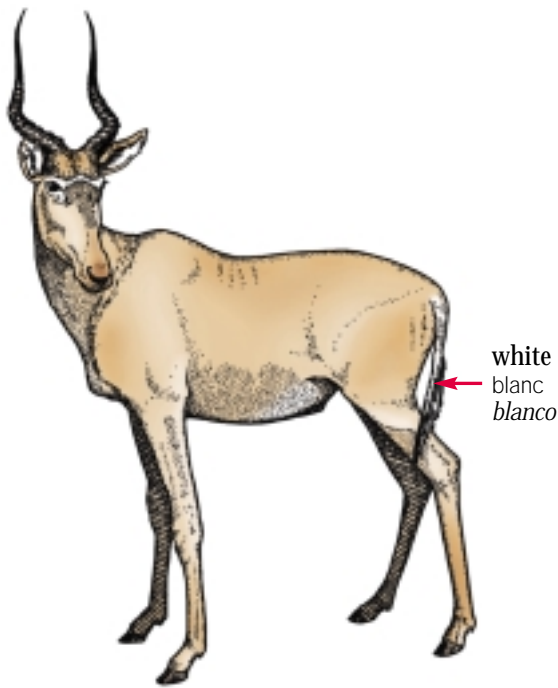
Damaliscus pygargus pygargus **53**

Damaliscus lunatus **54**

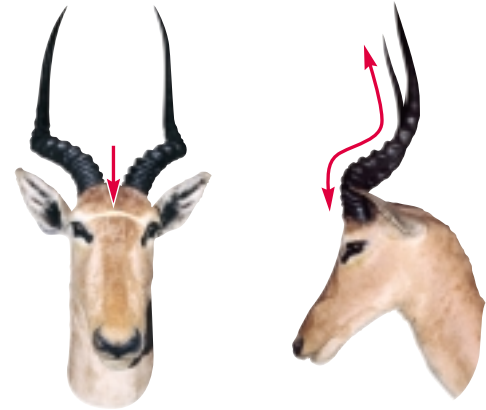
Damaliscus pygargus phillipsi **53**

Damaliscus hunteri **55**

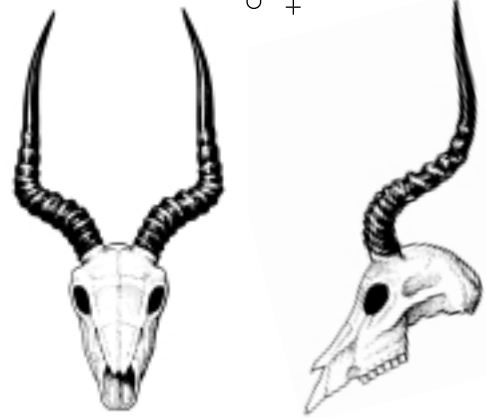
Antidorcas marsupialis **48**



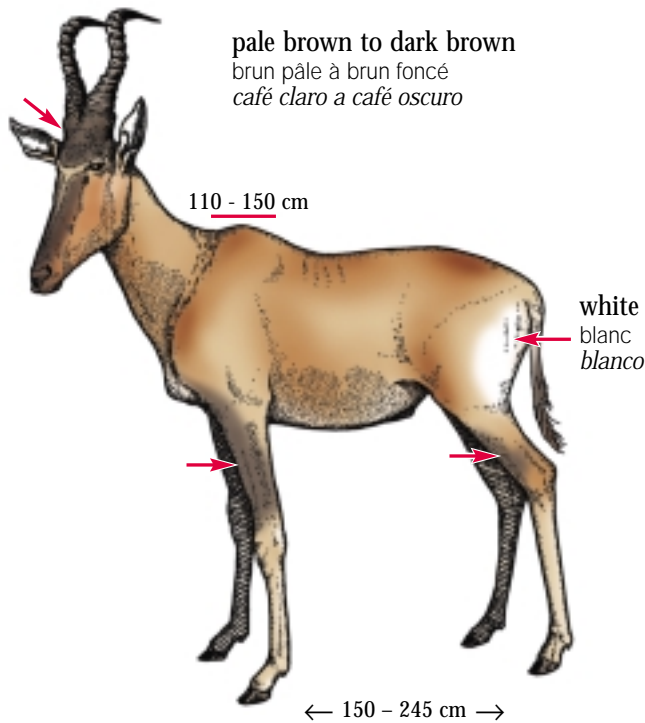
white
 blanc
 blanco



♂ ♀



 *Damaliscus hunteri*

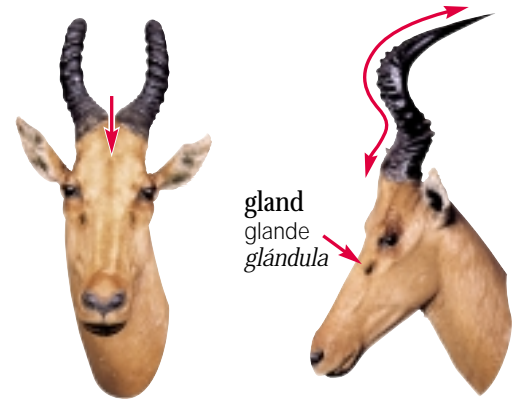


pale brown to dark brown
 brun pâle à brun foncé
café claro a café oscuro

110 - 150 cm

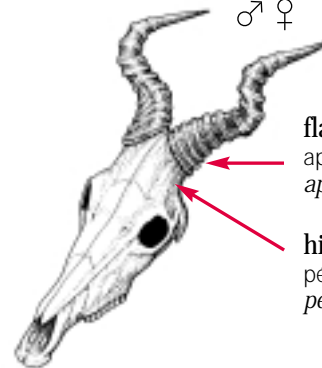
white
 blanc
 blanco

← 150 - 245 cm →




gland
 glande
 glándula

♂ ♀



flattened at base
 aplatie à la base
aplanado en la base

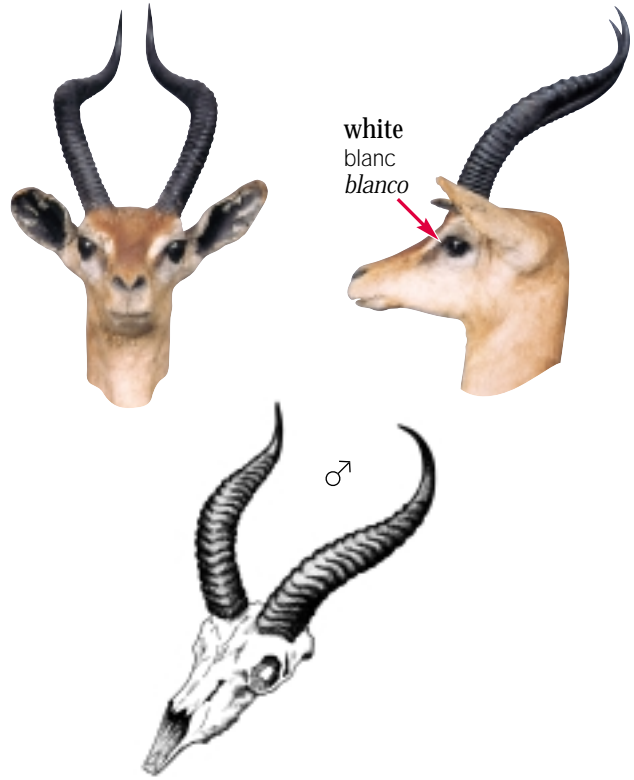
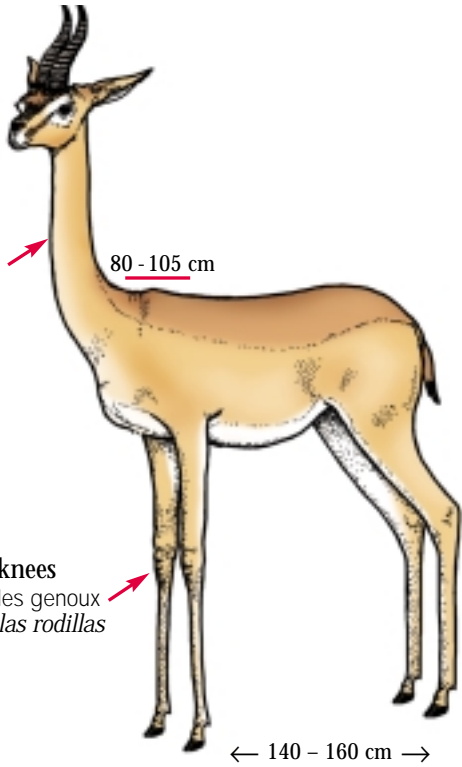
high bony pedestal
 pédicelle osseux élevé
pedicelo huesudo alto

 *Alcelaphus buselaphus*



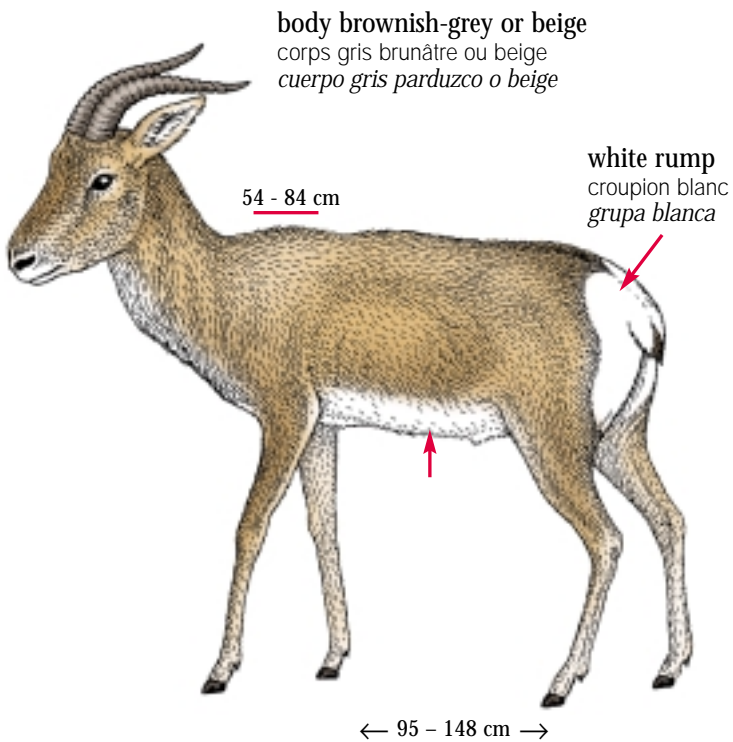
S-shaped
en "S"
en "S"

Generuk, Central Asian Gazelles
Gazelle-giraffe, Gazelles de Mongolie, du Tibet
Gracela de Waller, Gacelas de Mongolia, del Tibet



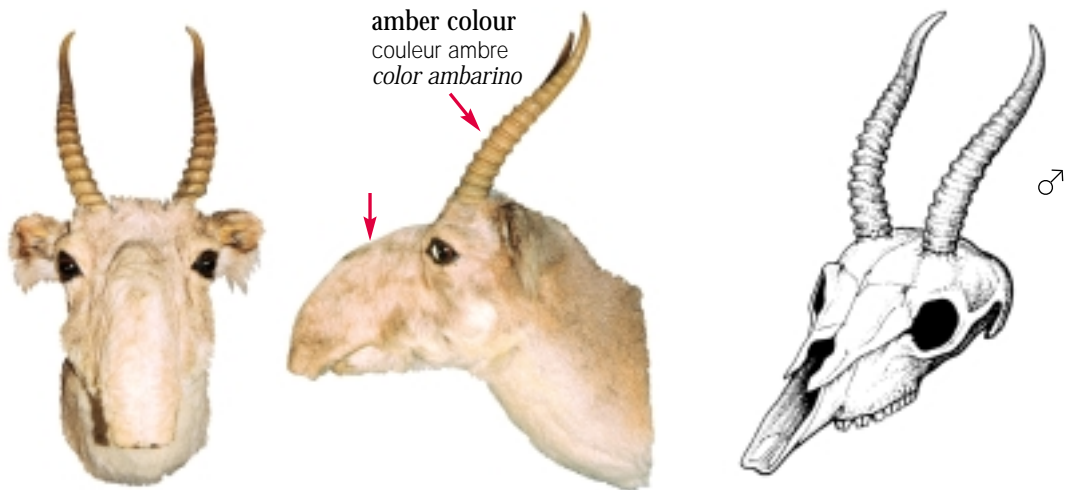
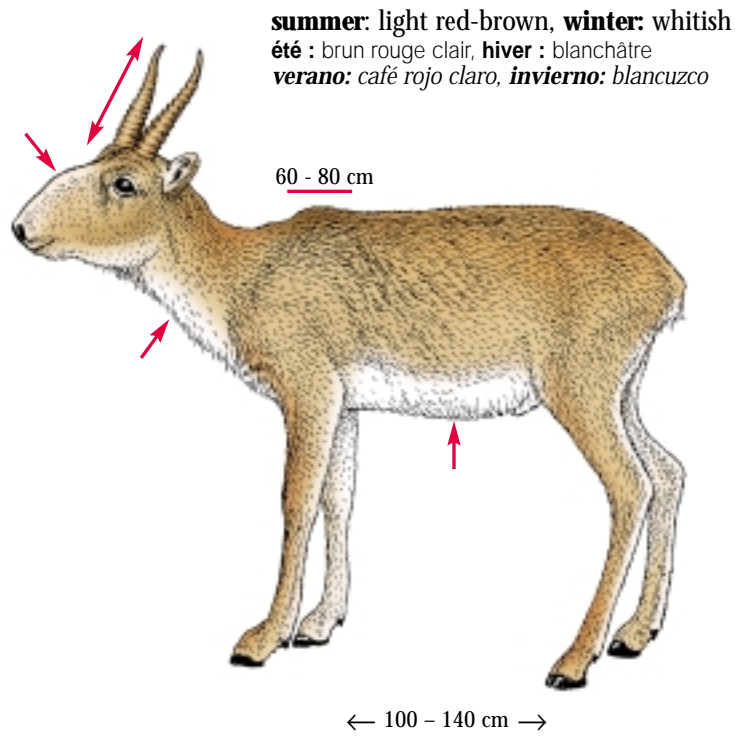
Litocranius walleri


see also / voir aussi / véase también Gazella dama 48



Procpra Spp.

Note: horns variable in the 3 Spp.
Note: cornes variables chez les 3 Spp.
Nota: cuernos variables en las 3 Spp.

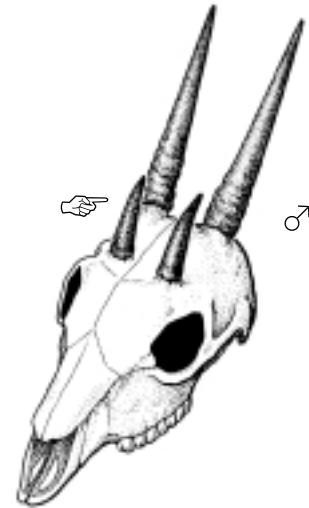
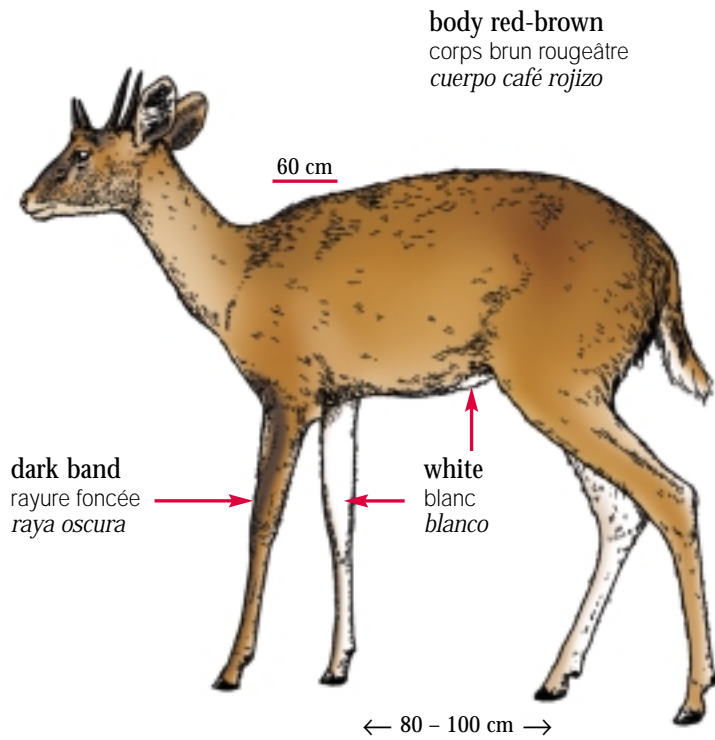



 Saiga tatarica



straight
droites
rectos

Chousingha
Tétracère
Antilope de cuatrocuernos



 *Tetracerus quadricornis*