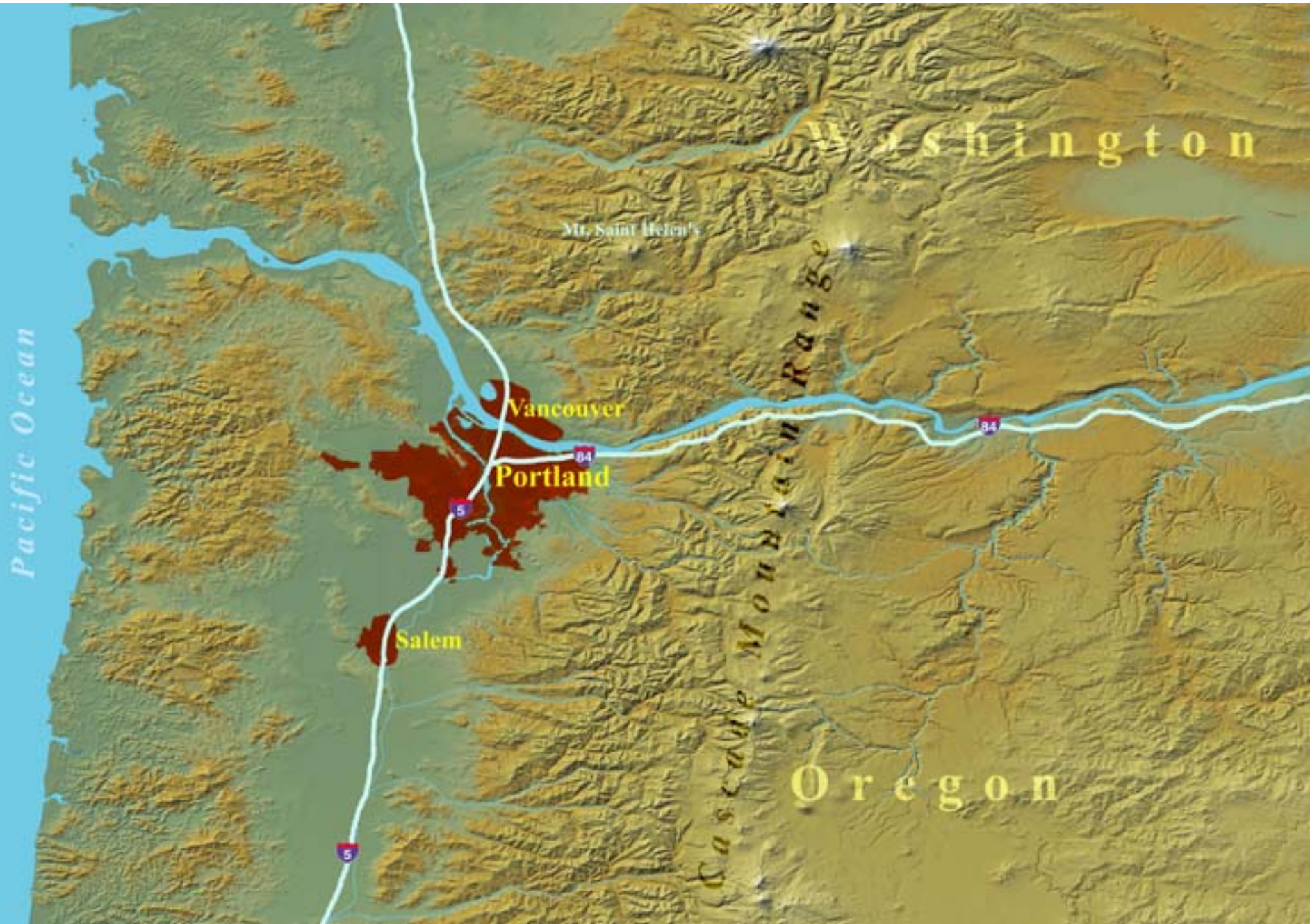


Portland, Oregon



METRO

The Pacific Northwest





METRO

Forest Grove Hillsboro Beaverton Tigard Tualatin Wilsonville
Portland Troutdale Gresham Milwaukie Oregon City

24 Cities
3 Counties
Special Districts

***Making the Land Use, Transportation,
Air Quality Connection***

Growth in the Region

Population Base

❖ 1.7 million people

(includes Clark County,
Washington)

-1.3 million people in
Metro boundary (37% of
the state)

-512,400 people in the
City of Portland

-23 smaller cities (615
to 85,000 people each)

-Growth rate twice the
national average

Major Economic Trends

❖ Growing industries

- Hi-tech
- Metals
- Transport equipment
- Printing
- Retail & Service sector

❖ Declining industries

- Lumber/wood
- Paper
- Food processing

Making the Land Use, Transportation, Air Quality Connection

1970	Formation of Metropolitan Service District
1971	
1972	
1973	
1974	Mandatory creation of Council-of-Governments (Crag)
1975	
1976	
1977	
1978	Metro vote to create Metro as an elected Regional Government
1979	
1980	
1981	
1982	
1983	
1984	
1985	
1986	
1987	
1988	
1989	
1990	Statewide Constitutional Amendment to authorize Metro to have a Home Rule Charter
1991	
1992	New Metro charter to reduce number of elected officials and increase role in regional planning
1993	
1994	
1995	
1996	
1997	
1998	
1999	
2000	
2001	Charter amendment to combine elected Executive Officer and elected Presiding Officer
2002	

Metro's History of Governance

Making the Land Use, Transportation, Air Quality Connection



- 1970
- 1971
- 1972
- 1973
- 1974
- 1975
- 1976
- 1977
- 1978**
- 1979
- 1980**
- 1981
- 1982**
- 1983
- 1984**
- 1985
- 1986**
- 1987
- 1988**
- 1989
- 1990**
- 1991
- 1992**
- 1993
- 1994**
- 1995
- 1996**
- 1997
- 1998**
- 1999
- 2000**
- 2001
- 2002**

Metro's history of elected official's elections



*Making the Land Use, Transportation,
Air Quality Connection*

Metro Council Districts



Making the Land Use, Transportation, Air Quality Connection



Metro's history of tax measures



Making the Land Use, Transportation, Air Quality Connection

1970	■ Solid Waste Planning
1971	
1972	
1973	
1974	
1975	
1976	■ Metropolitan Zoo
1977	
1978	
1979	
1980	
1981	■ Solid Waste Disposal & Recycling
1982	■ Johnson Creek Flood Control (failed)
1983	■ Solid Waste Incinerator (failed)
1984	
1985	
1986	
1987	■ Convention Center, Performing Arts, Baseball Stadium, basketball Arena
1988	
1989	
1990	
1991	■ Regional Parks System
1992	■ Exposition Center
1993	
1994	
1995	
1996	
1997	
1998	
1999	
2000	
2001	
2002	

Metro's history of service functions



Making the Land Use, Transportation, Air Quality Connection



Metro's history of planning functions

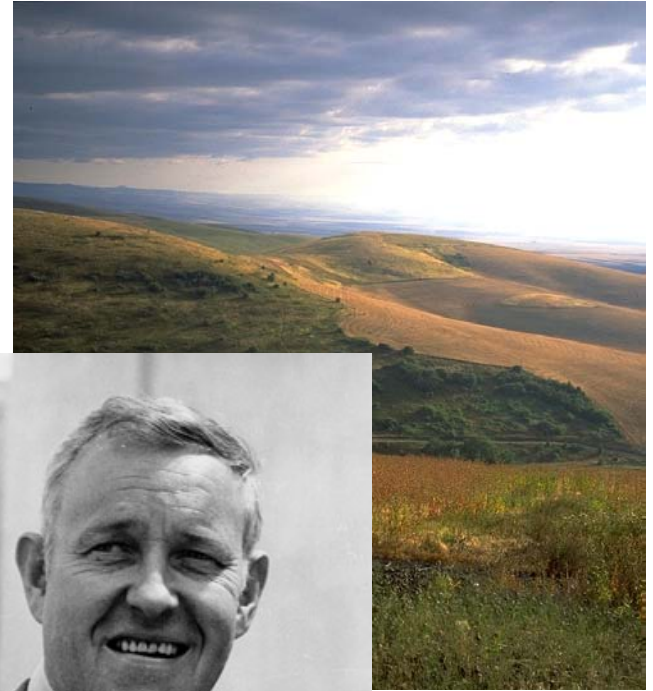


METRO

***Making the Land Use, Transportation,
Air Quality Connection***

The Oregon Story

**"There is a
shameless threat
to our
environment and
to the whole
quality of life:
unfettered
despoiling of the
land. Sagebrush
subdivisions,
coastal
'condomania'...**



Governor Tom McCall



METRO

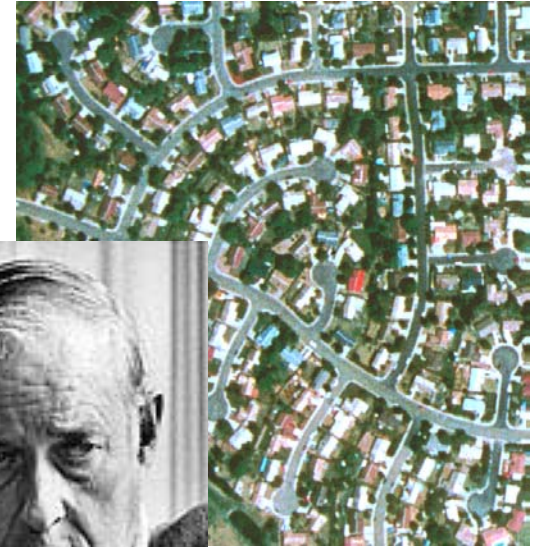


***Making the Land Use, Transportation,
Air Quality Connection***

The Oregon Story

**“...and the ravenous
rampage of suburbia
in the Willamette
Valley all threaten
to mock Oregon's
status as the
environmental
model for the
nation.”**

Tom McCall's
address to
the Legislature,
January 8, 1973



METRO

***Making the Land Use, Transportation,
Air Quality Connection***

Senate Bill 100

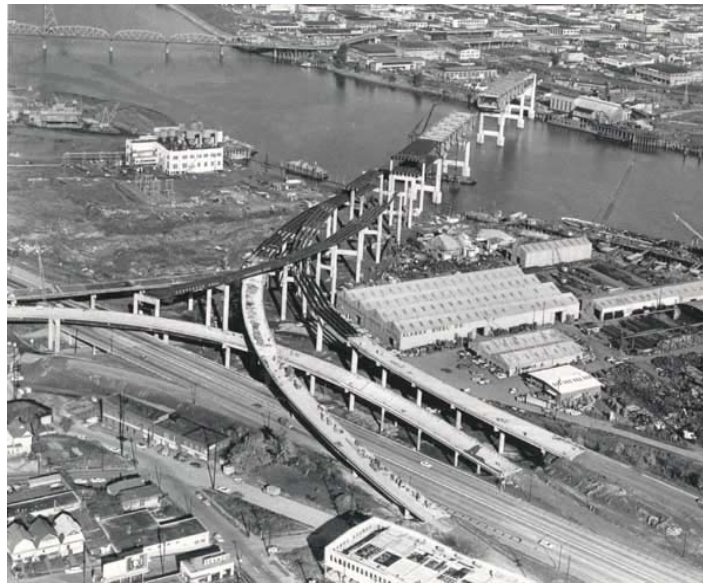
- ❖ **Legislature adopts pioneering 1973 statewide planning program to limit sprawl and protect forest and farms**
- ❖ **Legislation requires local plans to meet statewide goals; creates LCDC**
- ❖ **Urbanization now focused inside urban growth boundaries**



Making the Land Use, Transportation, Air Quality Connection

Portland's Backlash

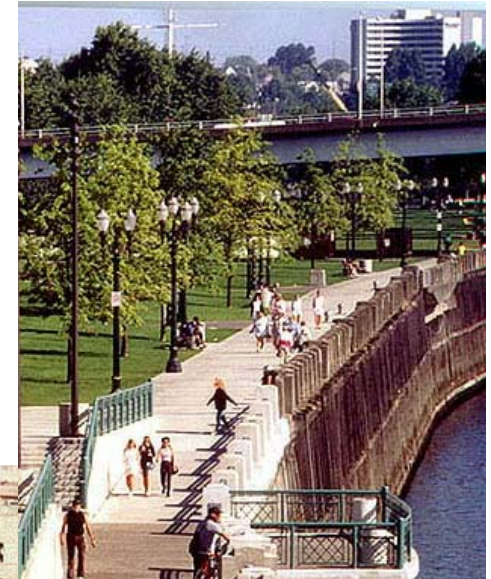
- ❖ In Portland, a backlash forms against a plan for massive freeway building that is already destroying urban neighborhoods



*Making the Land Use, Transportation,
Air Quality Connection*

Highway Revolt

- ❖ Harbor Freeway removed in 1976 to make way for Tom McCall Waterfront Park
- ❖ Mount Hood Freeway withdrawn in favor of light rail transit along the Banfield
- ❖ Shift freeway money to multi-modal projects



***Making the Land Use, Transportation,
Air Quality Connection***

Light Rail Opens

- ❖ **Banfield light rail opens in late 1986, becoming the centerpiece of downtown plans in Portland and Gresham**
- ❖ **Westside light rail to Hillsboro begins in 1998**
- ❖ **Airport service begins in 2001**



Making the Land Use, Transportation, Air Quality Connection

Opposition Forms



❖ **Western
bypass freeway
plan in rapidly
growing
Washington
County**



METRO

***Making the Land Use, Transportation,
Air Quality Connection***

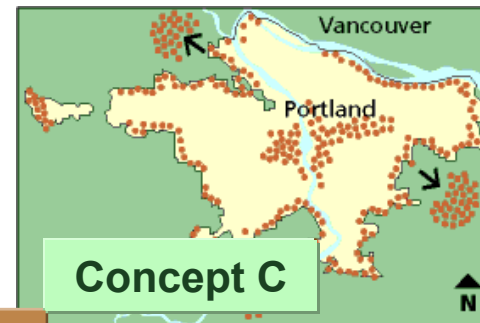
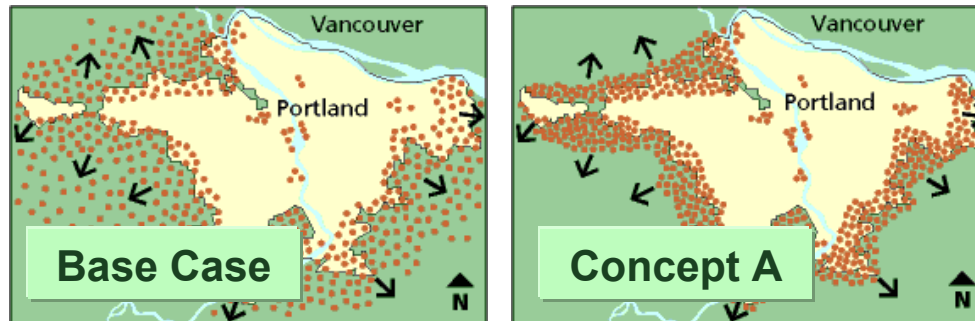
LUTRAQ

- ❖ **1989 Western Bypass proposal frames a new debate on regional growth management**
- ❖ **1000 Friends of Oregon proposes LUTRAQ alternative to status quo**
- ❖ **Linking land use and transportation planning becomes new mandate for regional plans**



Making the Land Use, Transportation, Air Quality Connection

2040 Concepts

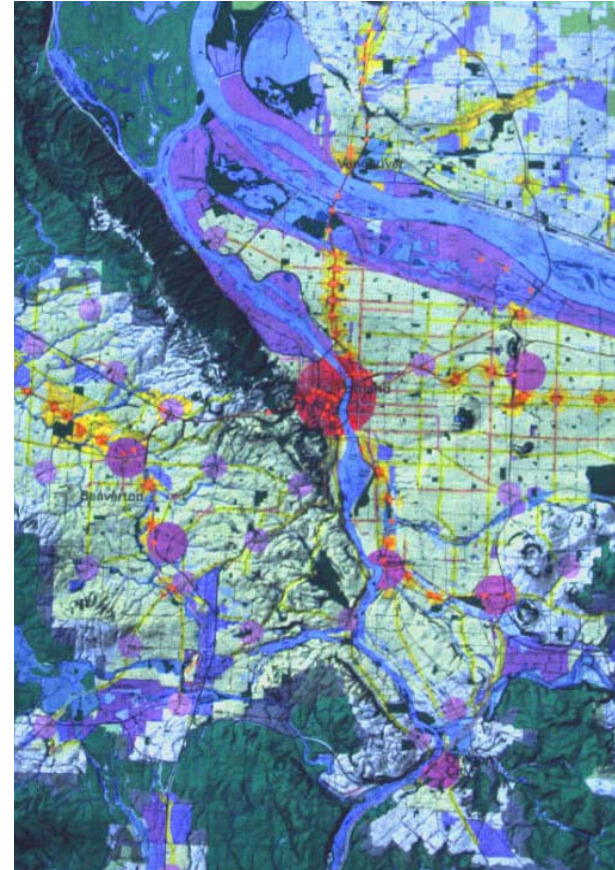


**2040 Growth
Concept
adopted in
1995**

*Making the Land Use, Transportation,
Air Quality Connection*

2040 Growth Concept

- ❖ **50-year vision for managing region's growth**
- ❖ **Incorporates best parts of "Concepts for Growth" options**
- ❖ **Kicks off a major effort to enact the new regional vision through local plans**



***Making the Land Use, Transportation,
Air Quality Connection***

2040 Theme: Travel Options

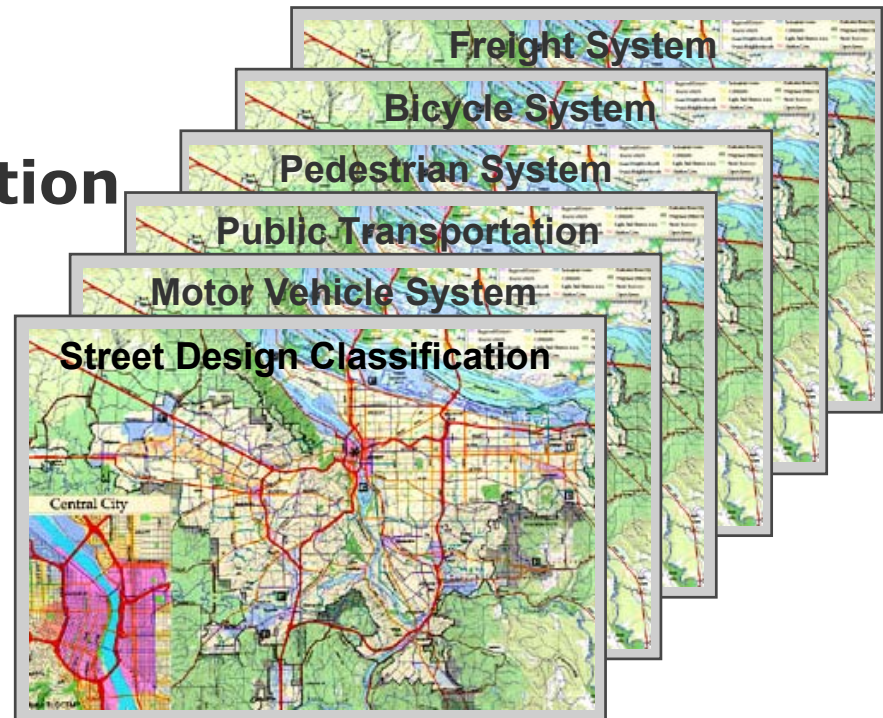
- ❖ **All streets retrofitted to include sidewalks and bikeways**
- ❖ **Better-connected street systems that allow easier walking and access to transit**
- ❖ **Frequent transit service on all major streets**



Making the Land Use, Transportation, Air Quality Connection

2040 Implementation: Focus on Multi-Modal

- ❖ Motor vehicle
- ❖ Public transportation
- ❖ Freight
- ❖ Pedestrian
& bicycle
- ❖ Street design



***Making the Land Use, Transportation,
Air Quality Connection***

2040 Themes: Streets for People

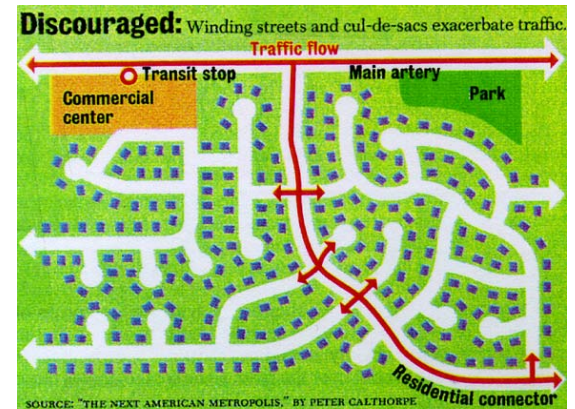
- ❖ **Boulevard designs in centers that promote walking, bicycling and transit, while creating civic space and a sense of community**
- ❖ **Street designs with self-enforcing features that calm traffic to posted speeds**



Making the Land Use, Transportation, Air Quality Connection

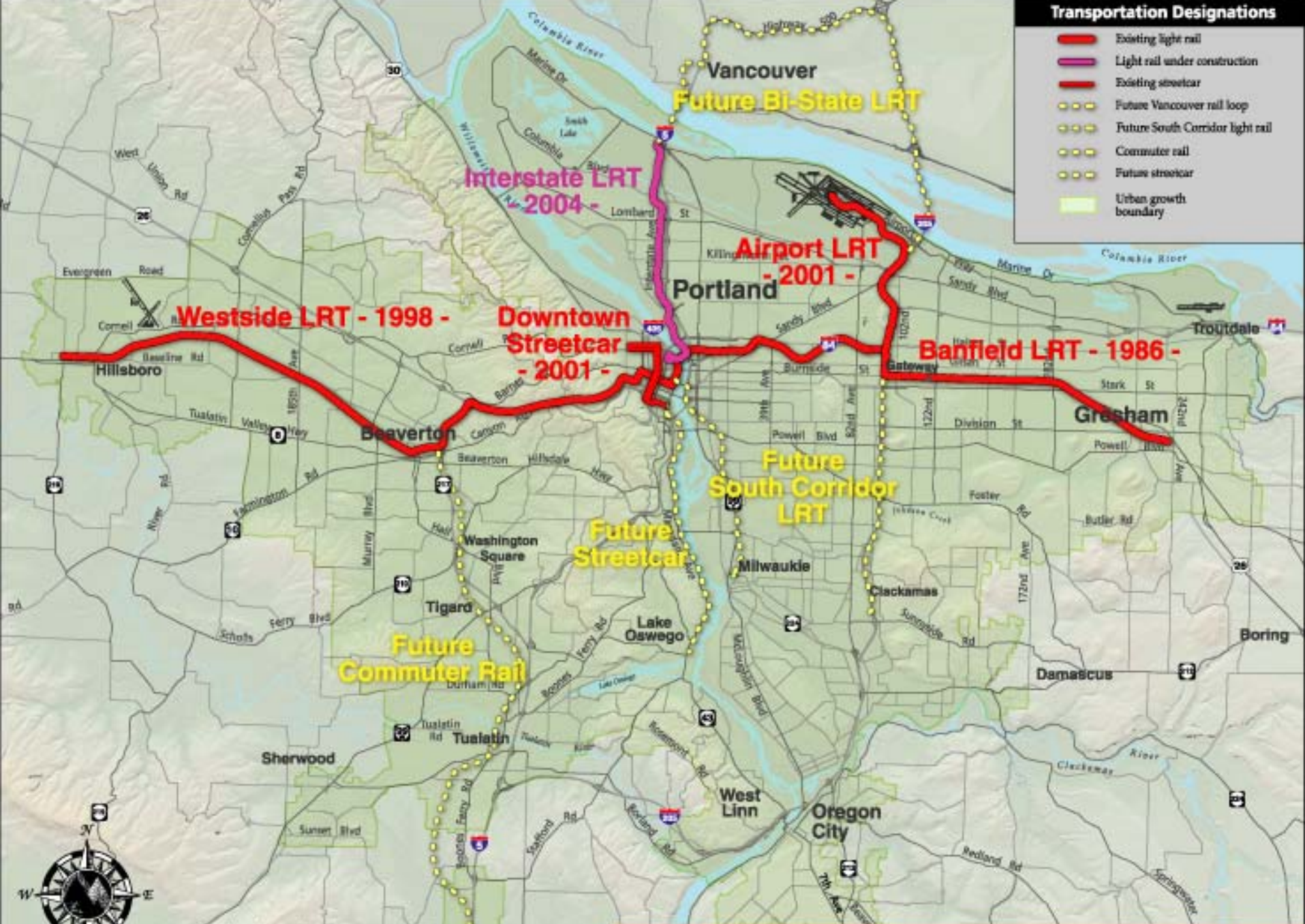
2040 Implementation: Connectivity

- ❖ Map key connections
- ❖ New streets at 10-16 per mile in residential and mixed-use areas
- ❖ Bike/ped accessways where street connections not provided
- ❖ Maintains function and helps state highways



Transportation Designations

- Existing light rail
- Light rail under construction
- Existing streetcar
- Future Vancouver rail loop
- Future South Corridor light rail
- Commuter rail
- Future streetcar
- Urban growth boundary



0 1 2
Miles
932792

Regional Rail Transit System

Making the Land Use, Transportation, Air Quality Connection

Westside LRT



❖ **Completed in 1998**

- Daily ridership averages more than 29,000 trips, surpassing 2008 projections
- Transportation capacity equal to 1.2 highway lanes

❖ **Portland street car opened in 2001**

***Making the Land Use, Transportation,
Air Quality Connection***

The Round



An old sewage treatment plant...



METRO

Learn more about Metro at
www.metro-region.org



Andrew C. Cotugno

Planning Director

Metro

503-797-1763

cotugnoa@metro.dst.or.us

