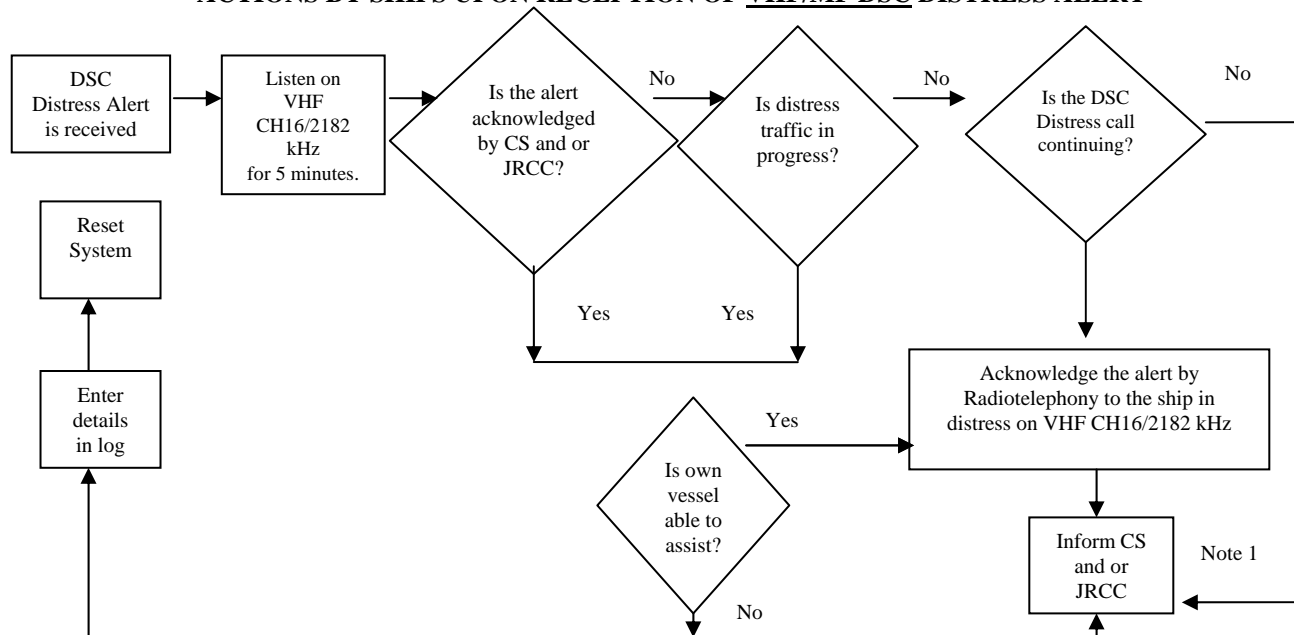


**FLOW DIAGRAM 1 (COMSAR/Cir.25)  
ACTIONS BY SHIPS UPON RECEPTION OF VHF/MF DSC DISTRESS ALERT**

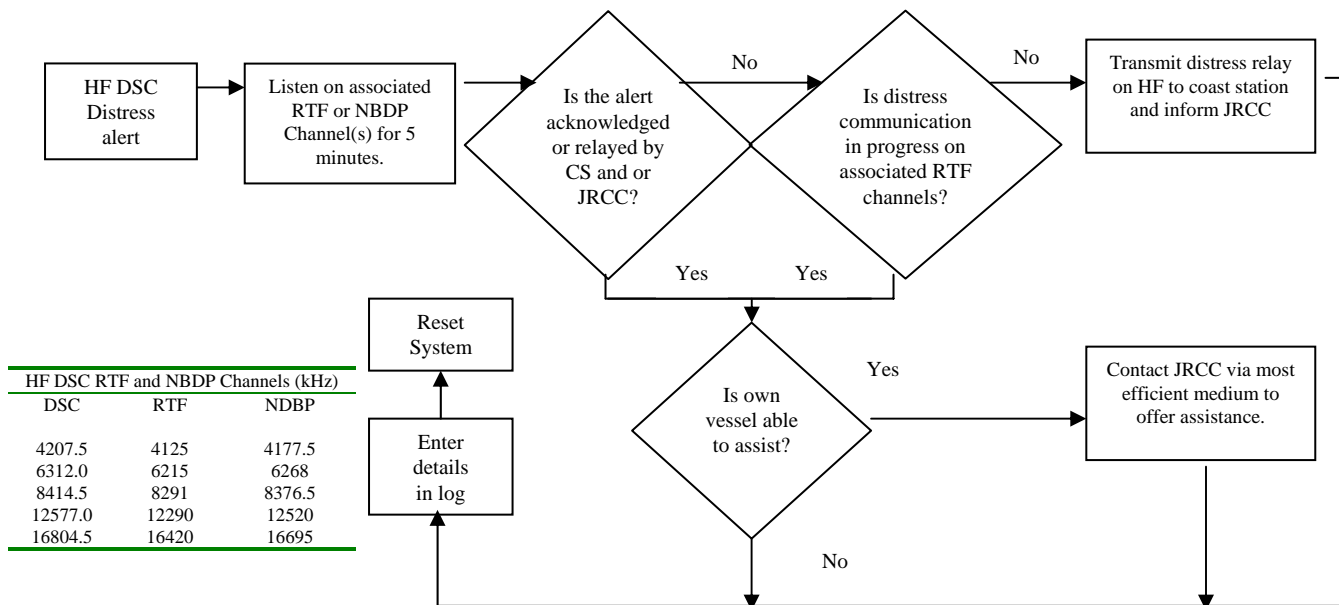


**REMARKS:**

Note 1: Appropriate or relevant JRCC and/or Coast Station shall be informed accordingly. If further DSC alerts are received from the same source and the ship in distress is beyond doubt in the vicinity, a DSC acknowledgement may, after consultation with a JRCC or Coast Station, be sent to terminate the call.

Note 2: In no case is a ship permitted to transmit a DSC distress relay call on receipt of a DSC distress alert on either VHF channel 70 or MF Channel 2187.5 kHz  
CS = Coast Station      JRCC = Joint Rescue Co-ordination Center

**FLOW DIAGRAM 1 (COMSAR/Cir.25)  
ACTIONS BY SHIPS UPON RECEPTION OF HF-DSC DISTRESS ALERT**



**REMARKS:**

Note 1: If it is clear the ship or persons in distress are not in the vicinity and/or other crafts are better placed to assist, superfluous communications which could interfere with search and rescue activities are to be avoided. Details should be recorded in the appropriate logbook.

Note 2: The ship should establish communications with the station controlling the distress as directed and render such assistance as required and appropriate.

Note 3: Distress relay calls should be initiated manually.

CS = Coast Station

JRCC = Joint Rescue Coordination Centre