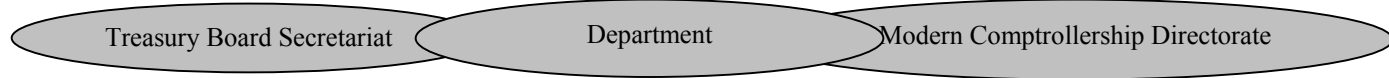


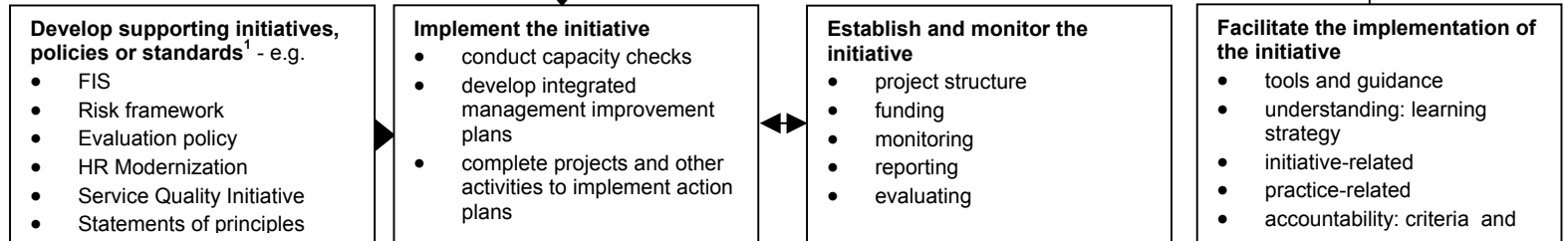
# LOGIC MODEL

## Modern Comptrollership



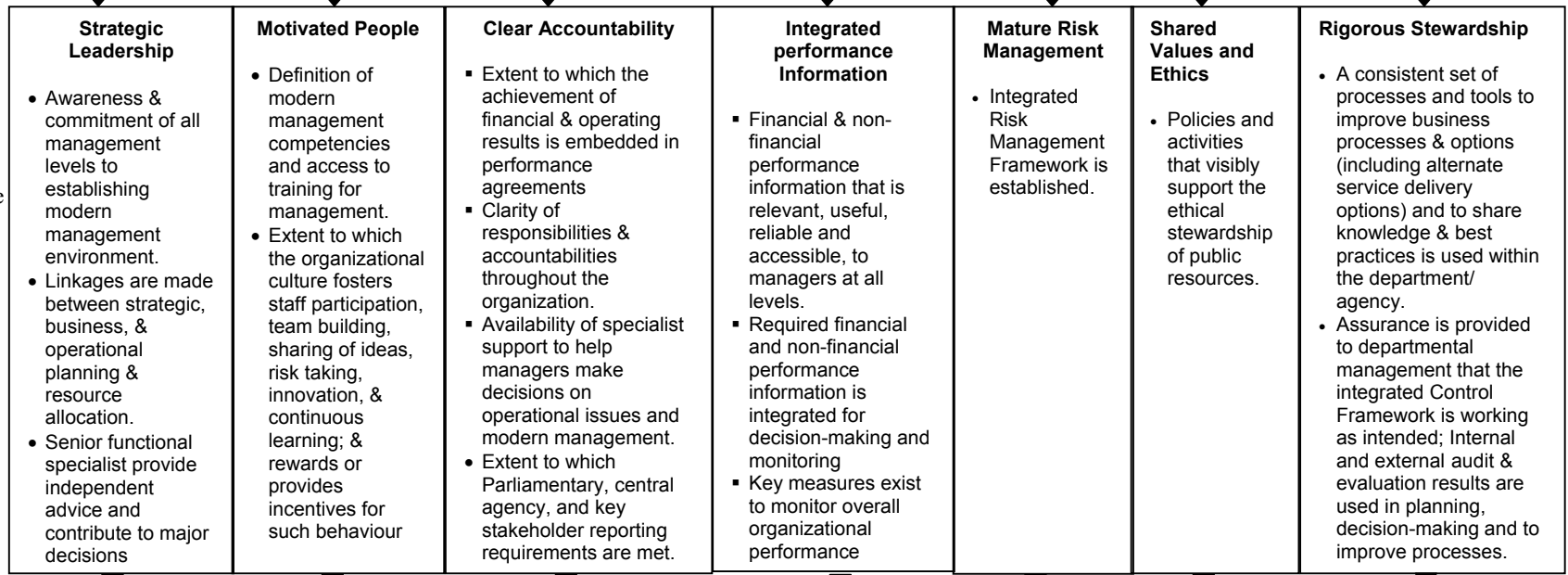
### Foundation Phase

Activities & outputs



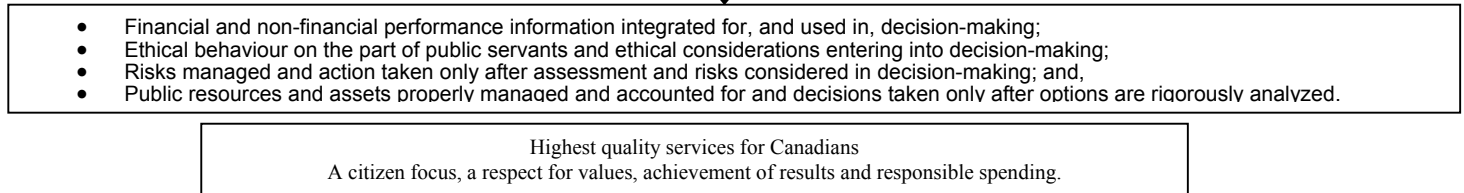
### Transition Phase

Intermediate outcomes - Areas influenced by the initiative



### Sustained Improvement Phase

Ultimate outcomes indirectly influenced by the initiative.



1. Policies, initiatives and standards would be used by departments to devise and implement action plans relating to one or more of the pillars and enablers of Modern Comptrollership.

Figure 1