

Canadian Centre for Housing Technology

Site Development

Original by: Bruce Gough

Reformatted by: Marianne Manning

Site sign



Canadian Centre
for Housing Technology

Centre canadien des
technologies résidentielles

a co-operative venture between
collaboration conjointe entre

NRC-CMRC

CMHC  SCHL
Canada



Natural Resources
Canada

Ressources naturelles
Canada

designed and built by
dessiné et construit par **MINTO**

Canada

Site Plan with 6 house development



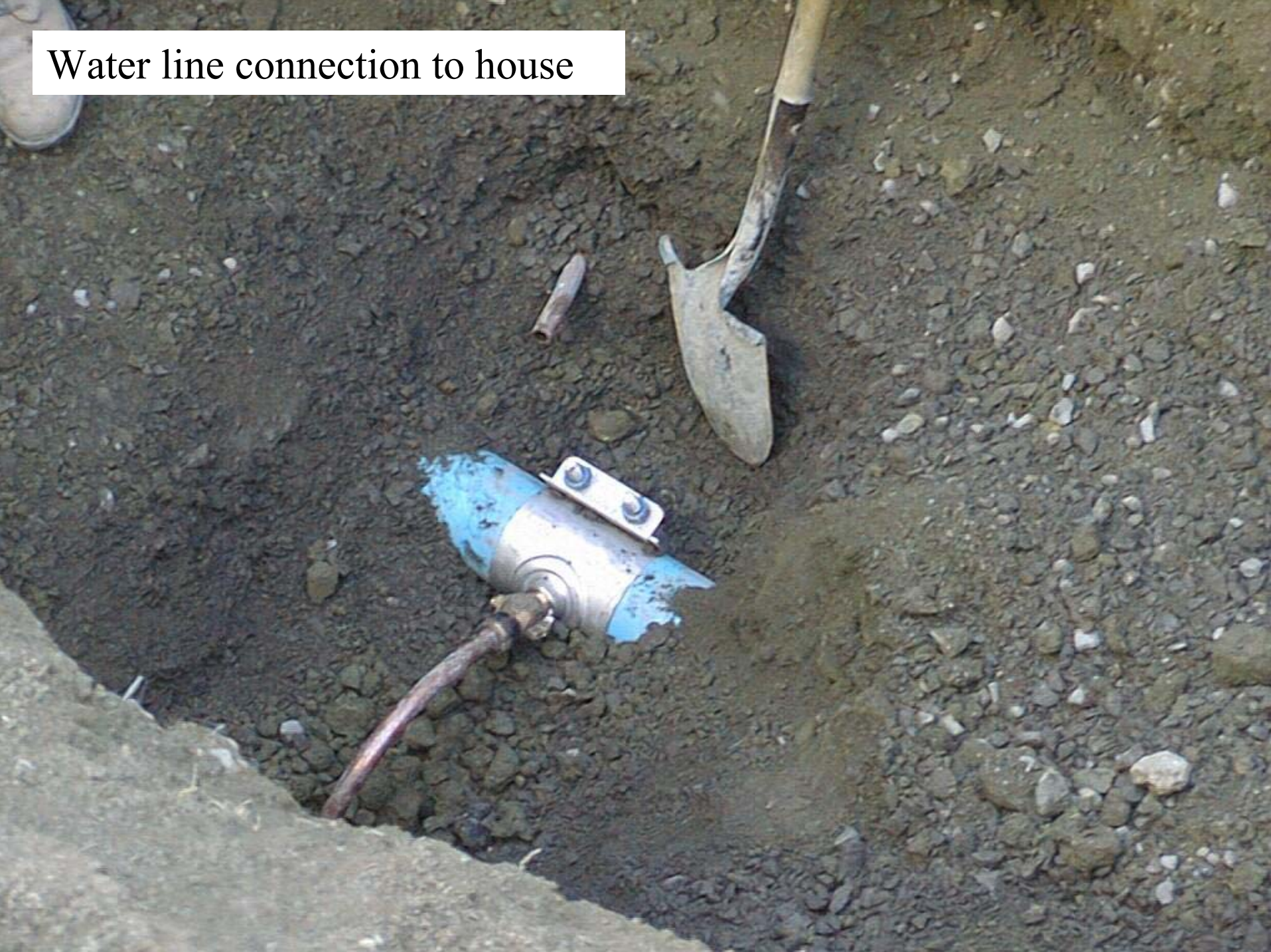
Site view from NRC campus entrance



Water and sewage connection



Water line connection to house



Laying duct bank for in-ground wire services



Dampproofing duct bank to NRC tunnel



Joining gas branch to house



Laying first lift of asphalt



3 bins for waste at houses and Info Centre



Weigh in at Huneault Waste Management

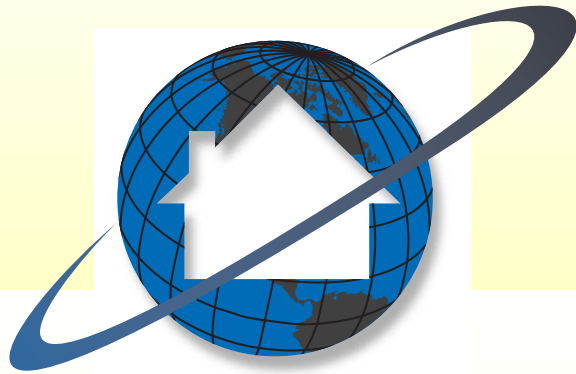


Dumped waste material prior to sorting



Separation of waste (cardboard)





Canadian Centre for Housing Technology

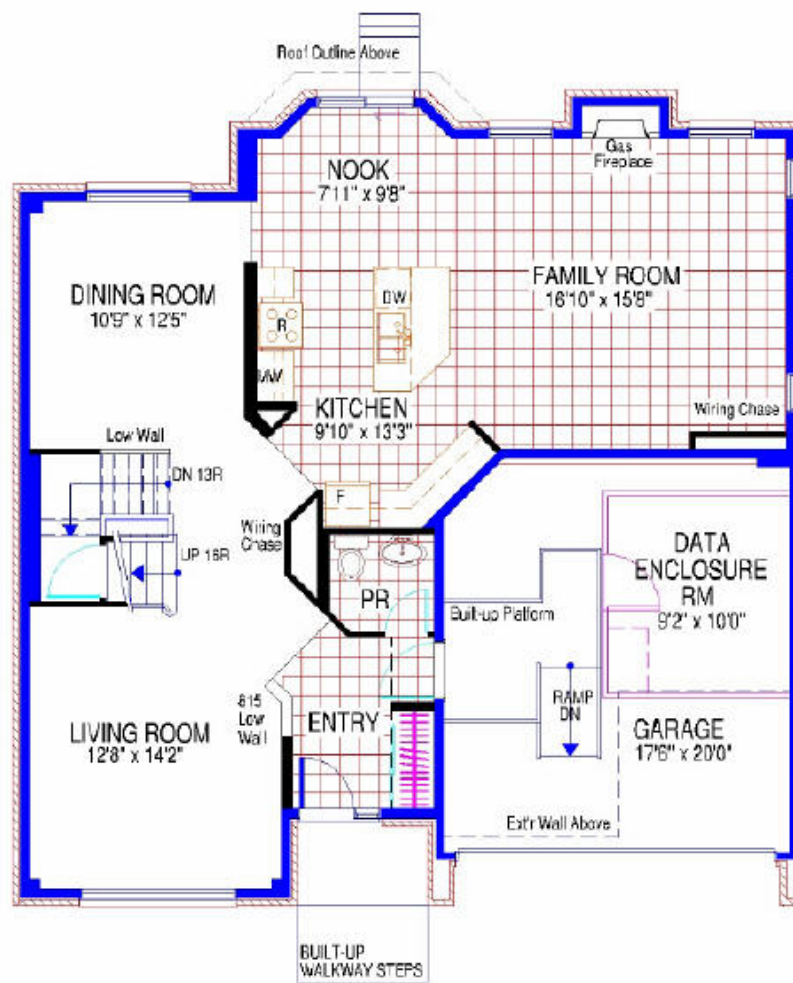
Reference & Test Houses

Original by: Bruce Gough

Reformatted by: Marianne Manning

Reference House at Christmas '98





REFERENCE/ TEST HOUSES

Sierra - Ground Floor Plan

Materials specifications and floor plans are subject to change without notice. All dimensions are approximate.



CMHC-SALE-SIERRADWG
1971693()

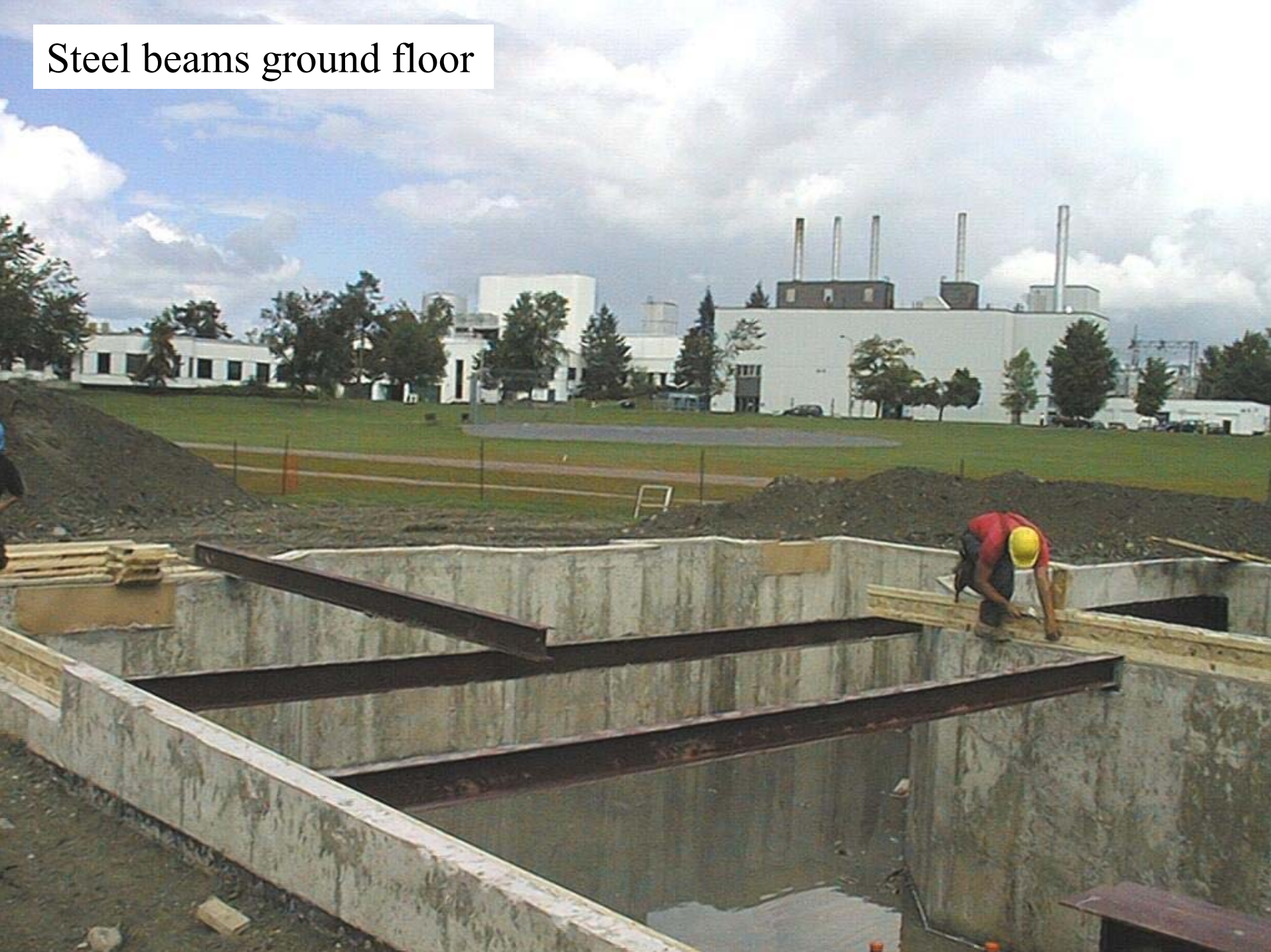
Pouring concrete footings



Foundation wall with window and dampproofing



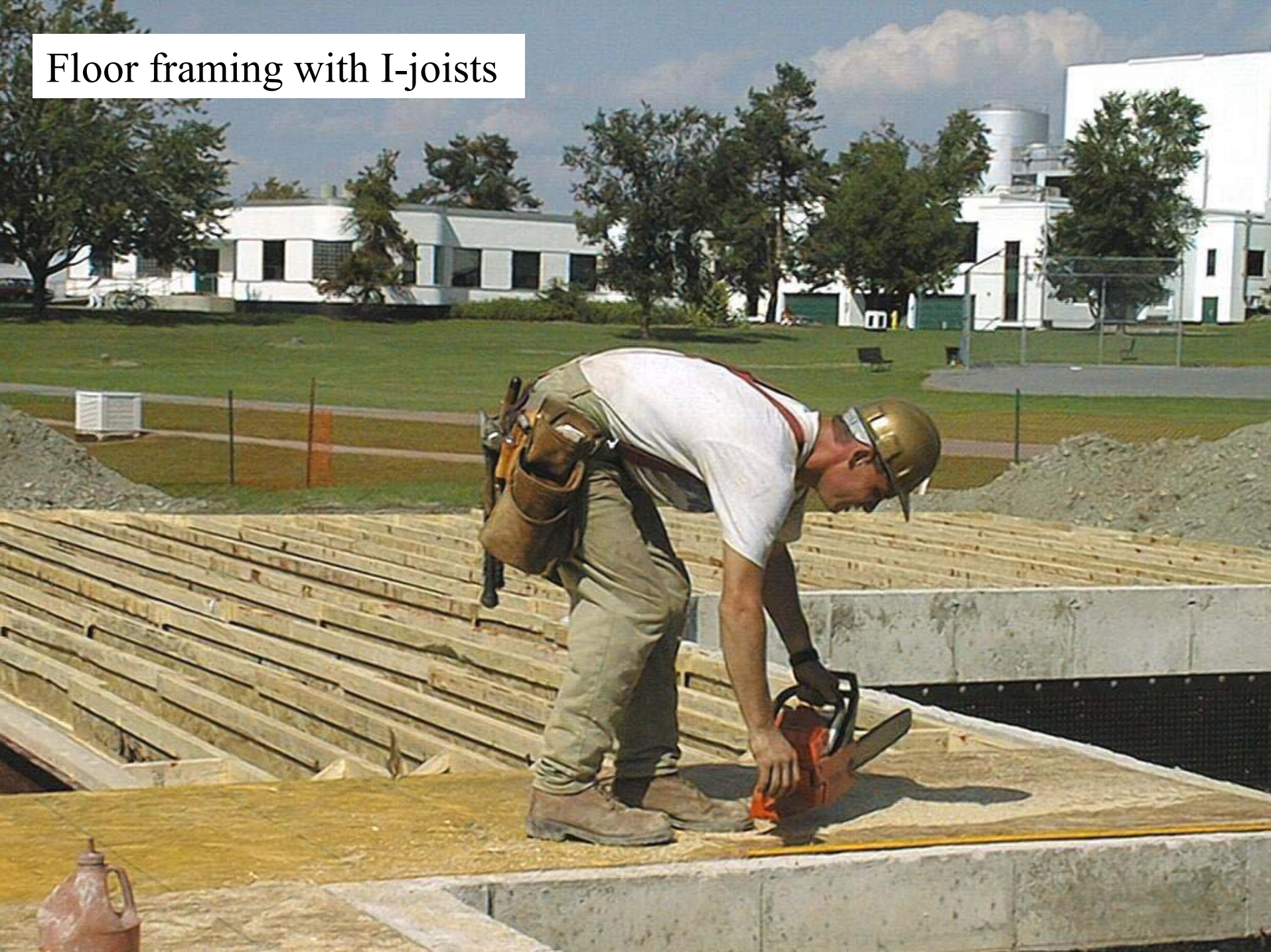
Steel beams ground floor



Ground floor inset in foundation for accessibility



Floor framing with I-joists



I-joist crush blocks



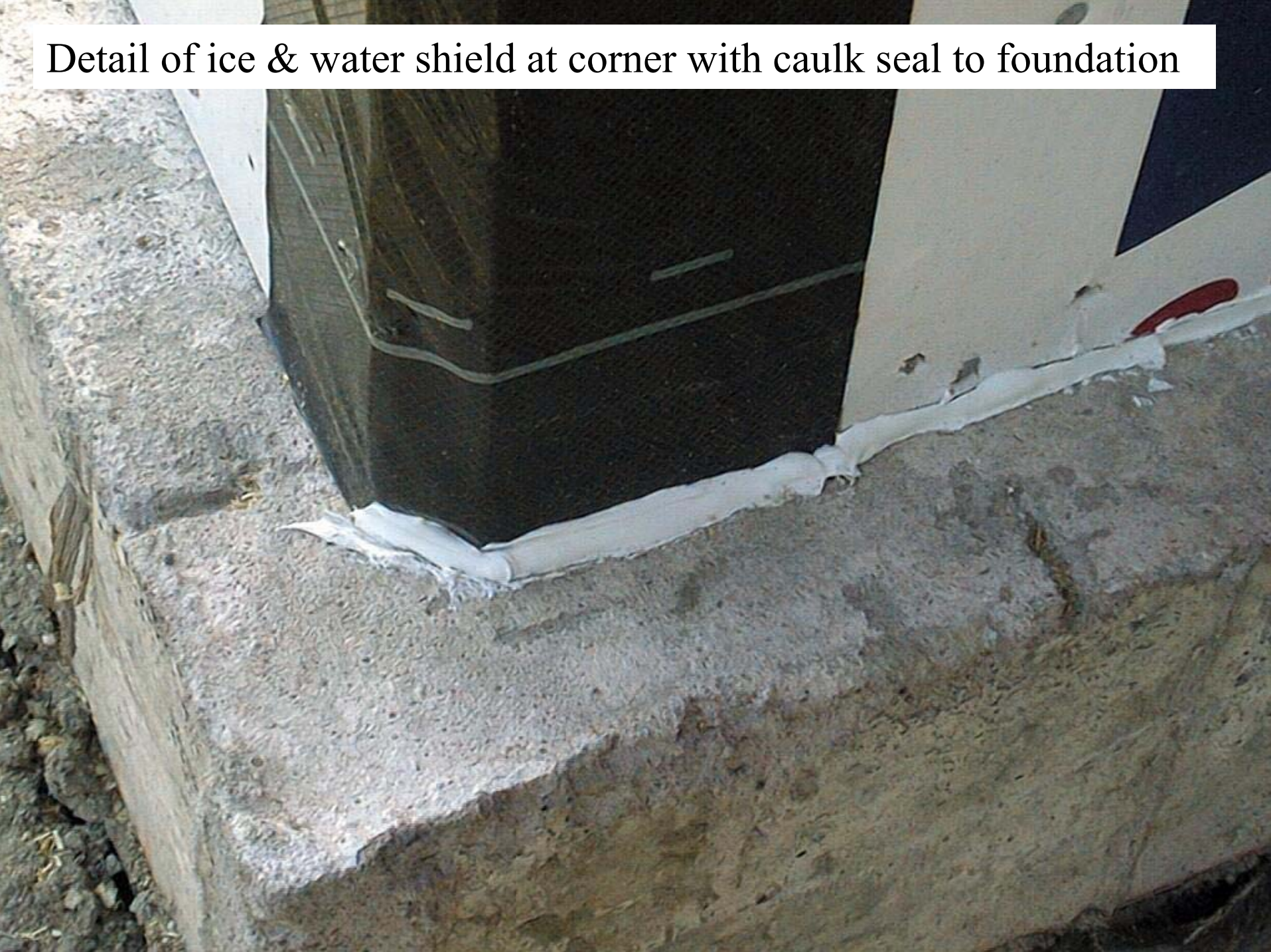
Ground floor walls with air barrier sheathing



Taping a joint in air barrier prior to tilt up



Detail of ice & water shield at corner with caulk seal to foundation



Erection of roof trusses



2x6 scabbed to bottom chord to support catwalks



Roof sheathing



New basement wall detail



Backing studs in wall framing



Steel beams and posts over family room



Drop ceiling detail in garage



Polyethylene VDR sealed to edges of wall plates



R-2000 fan depressurization test



Brick starter flashing at foundation



Delivering drywall



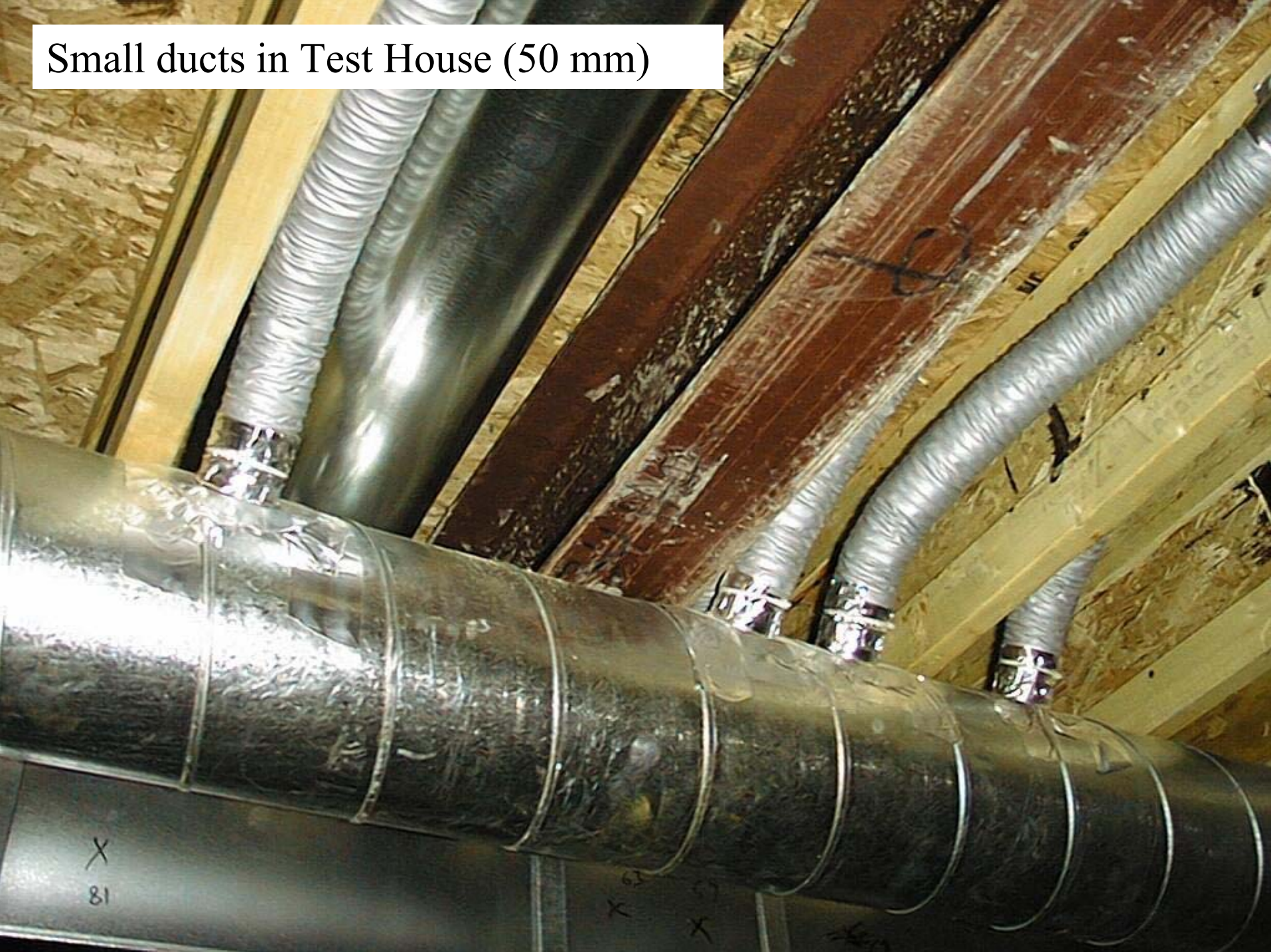
Cabinets sealed on hidden surfaces



Direct venting of fireplace at rear



Small ducts in Test House (50 mm)



X
81

X

X

X

Schwank temporary gas space heater



Olsen GTH50 high efficiency gas furnace



Testing duct leakage and air flows in furnace



Honeywell F35 media filter



GSW 5065 power vent hot water heater



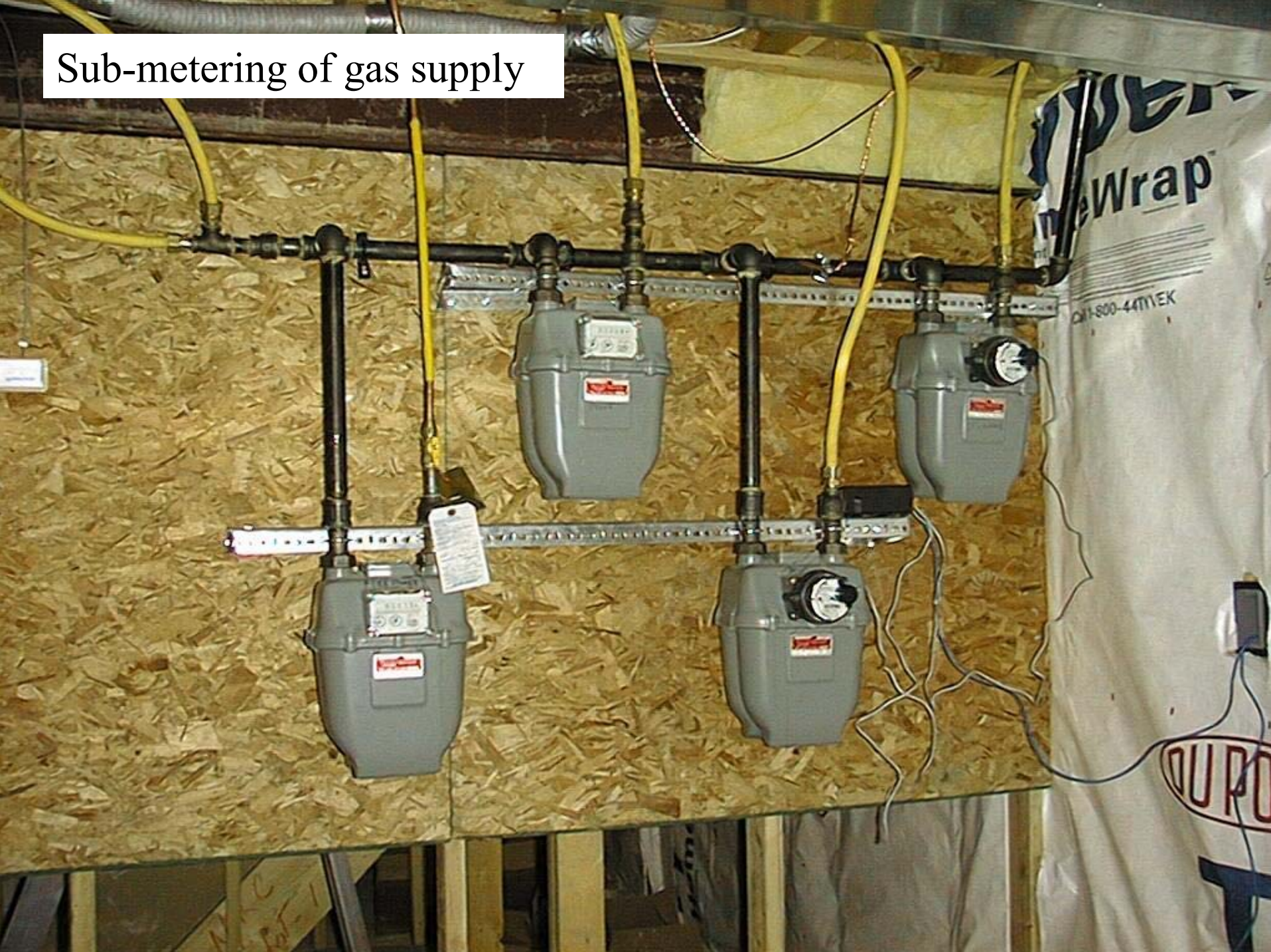
Interior of Venmar 1.8 HE Heat Recovery Ventilator



New thermostat by Horizon Technologies



Sub-metering of gas supply



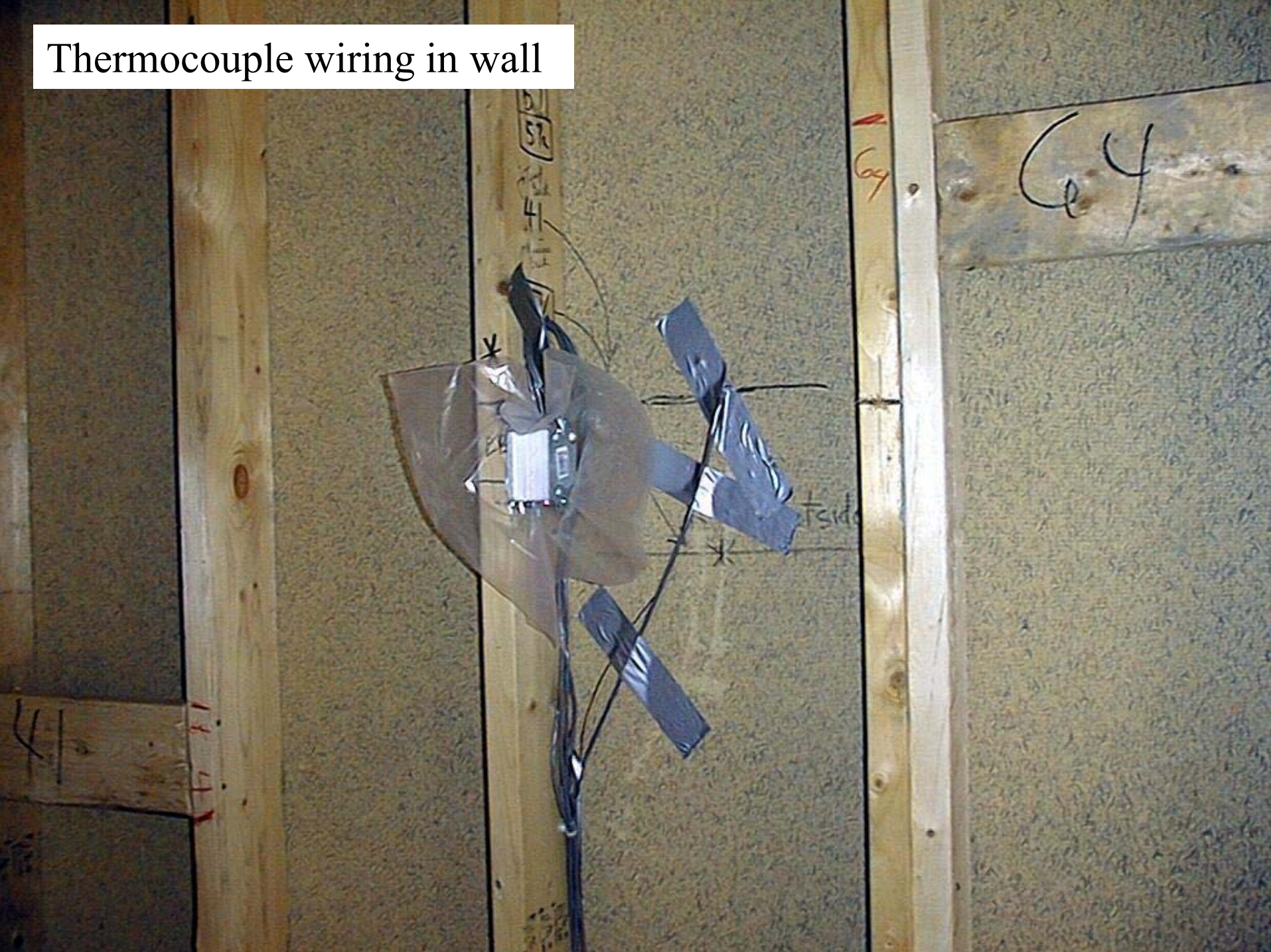
Sub-metering of electrical service



Extra circuits for occupancy simulation



Thermocouple wiring in wall



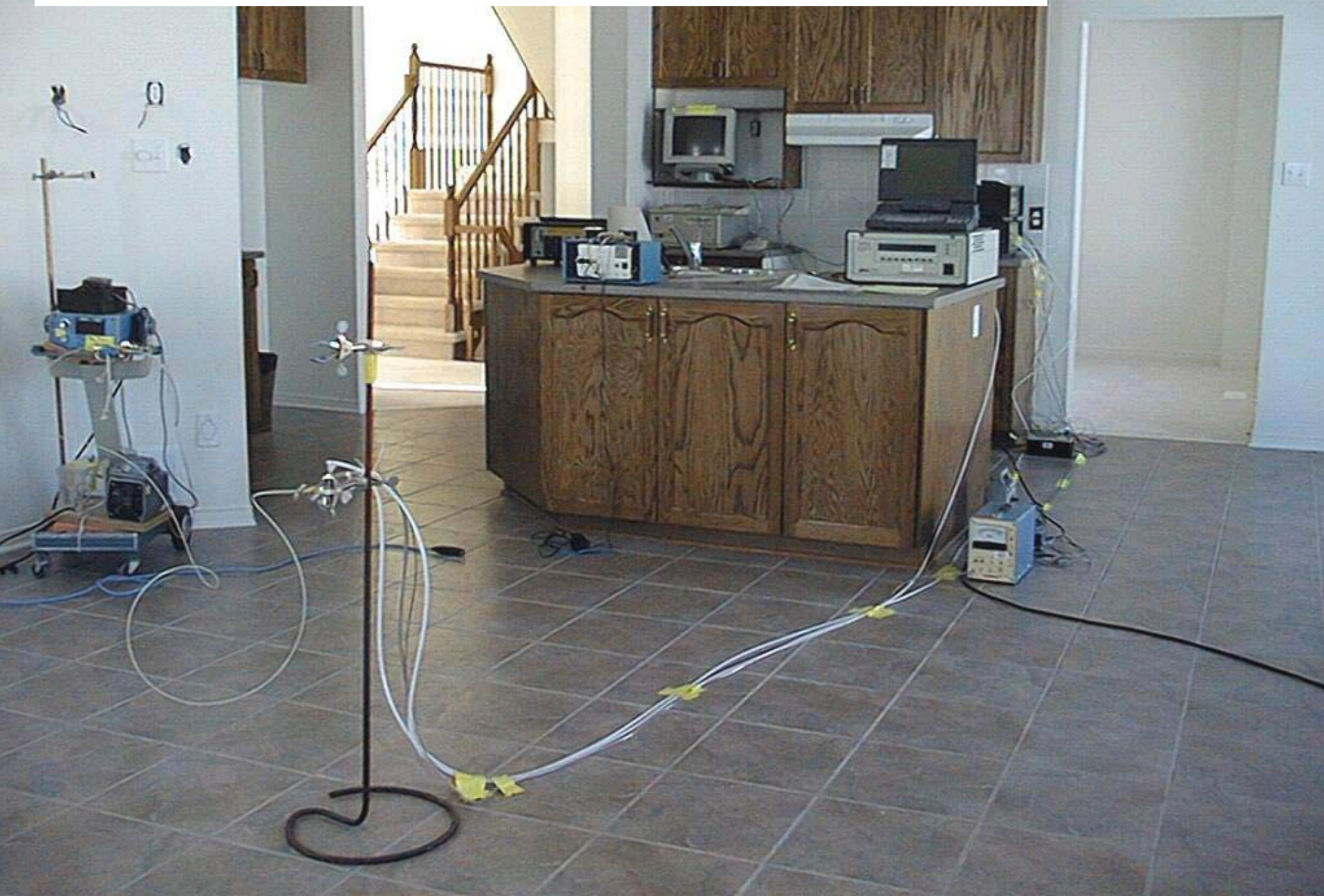
Monitoring wires leading to garage

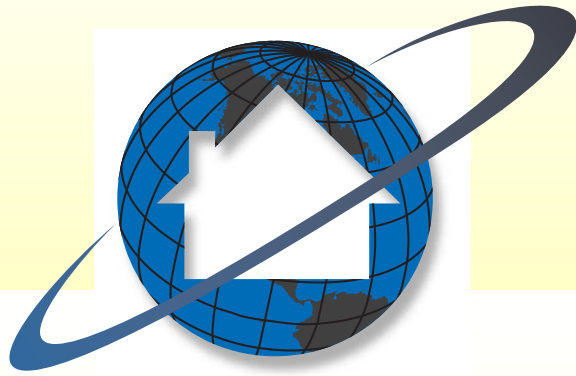


Hut in garage for monitoring equipment and access ramp



Air quality monitoring equipment in Reference House





Canadian Centre for Housing Technology

Information Centre & Flex Housing Unit

Original by: Bruce Gough

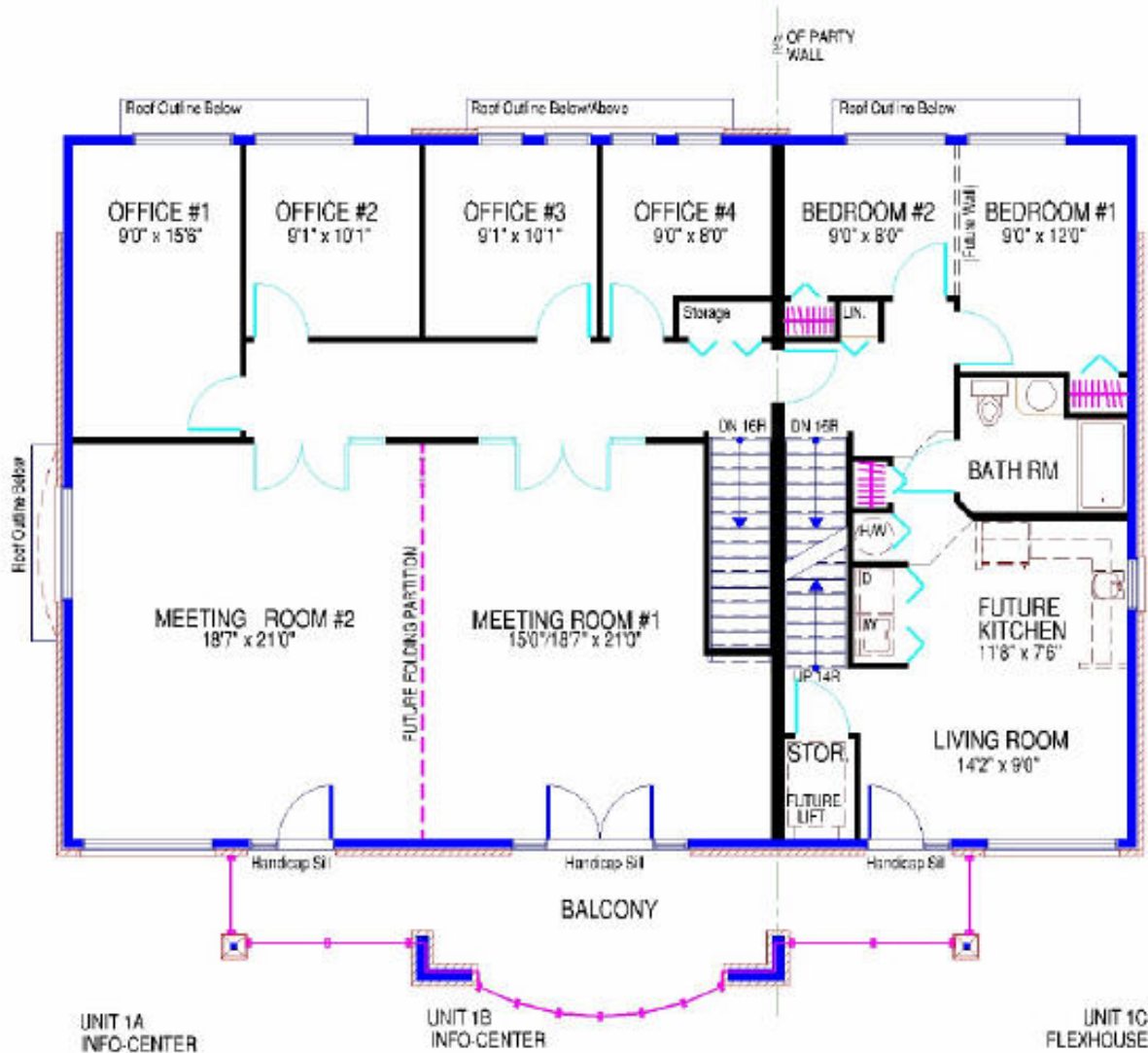
Reformatted by: Marianne Manning

Information Centre at Christmas '98



North elevation





Info-Center/Flexhouse - Second Floor Plan

Materials specifications and floor plans
are subject to change without notice.
All dimensions are approximate.



CM-HO-SALE-INFO-DWG
01/12/98 (1)

Footings



Self-leveling concrete slump test



Self-leveling concrete pour



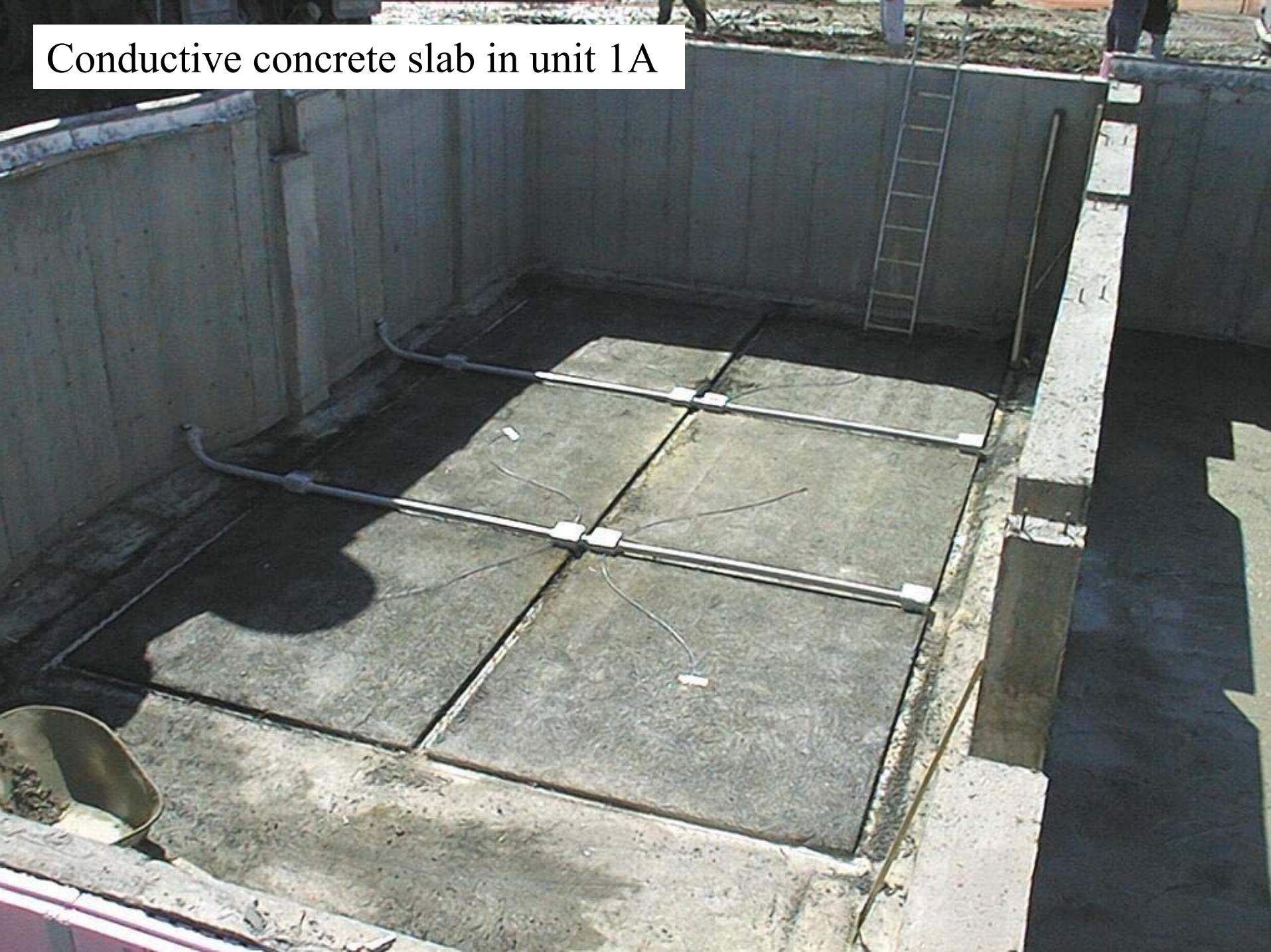
High fly ash concrete in party wall foundations



Fastening board insulation to foundation walls



Conductive concrete slab in unit 1A



Framing ground floor I-joists over steel beams



Ground floor walls with board air barrier



Second floor walls



Application of tape and ice & water shield



Erection of roof trusses



Detail of insulated concrete in plinth stone



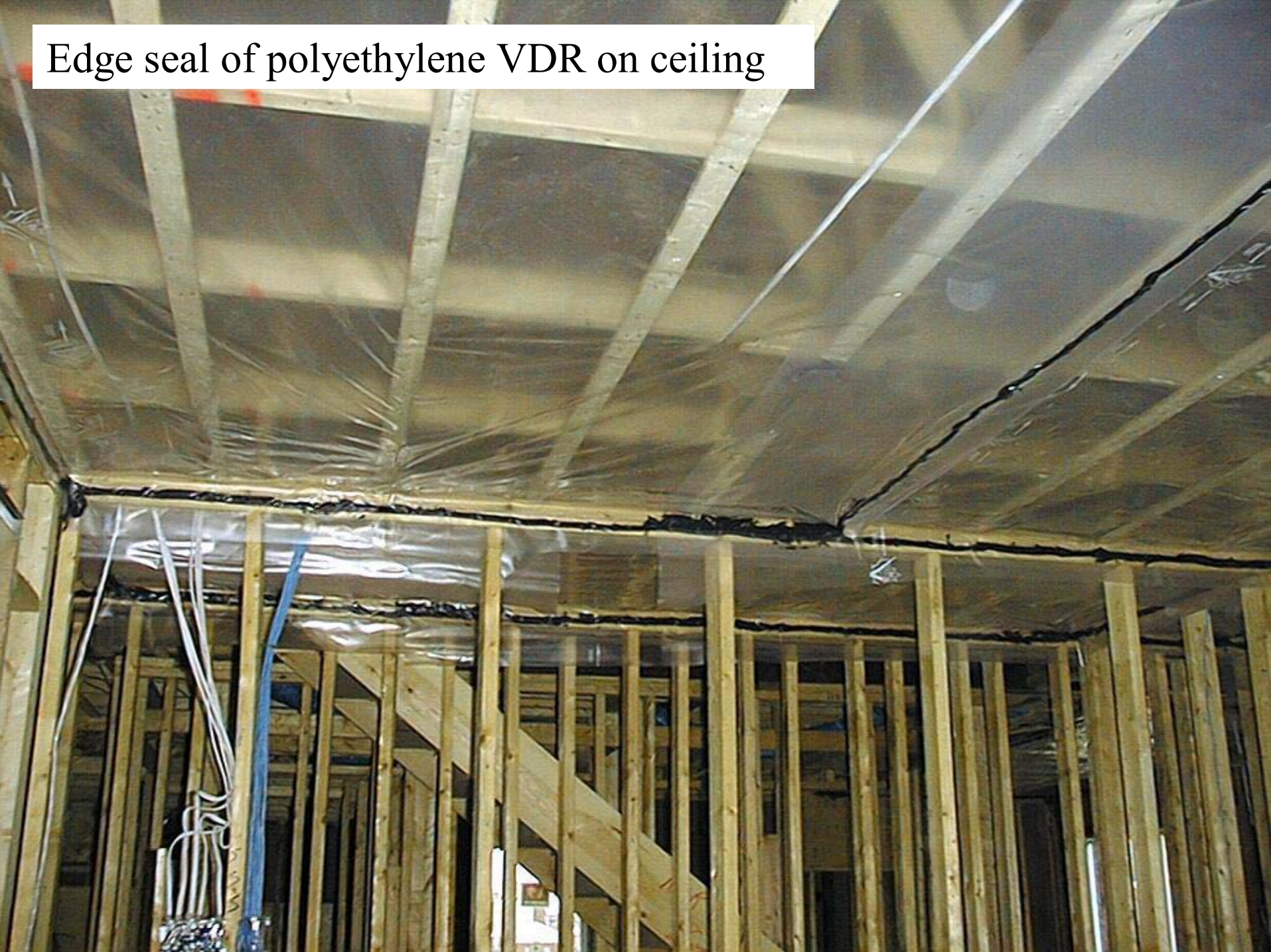
Brick detail on plinth



Wire lath and parging



Edge seal of polyethylene VDR on ceiling



Two layers of firecode gypsum board on party wall



Aluminum deck framing



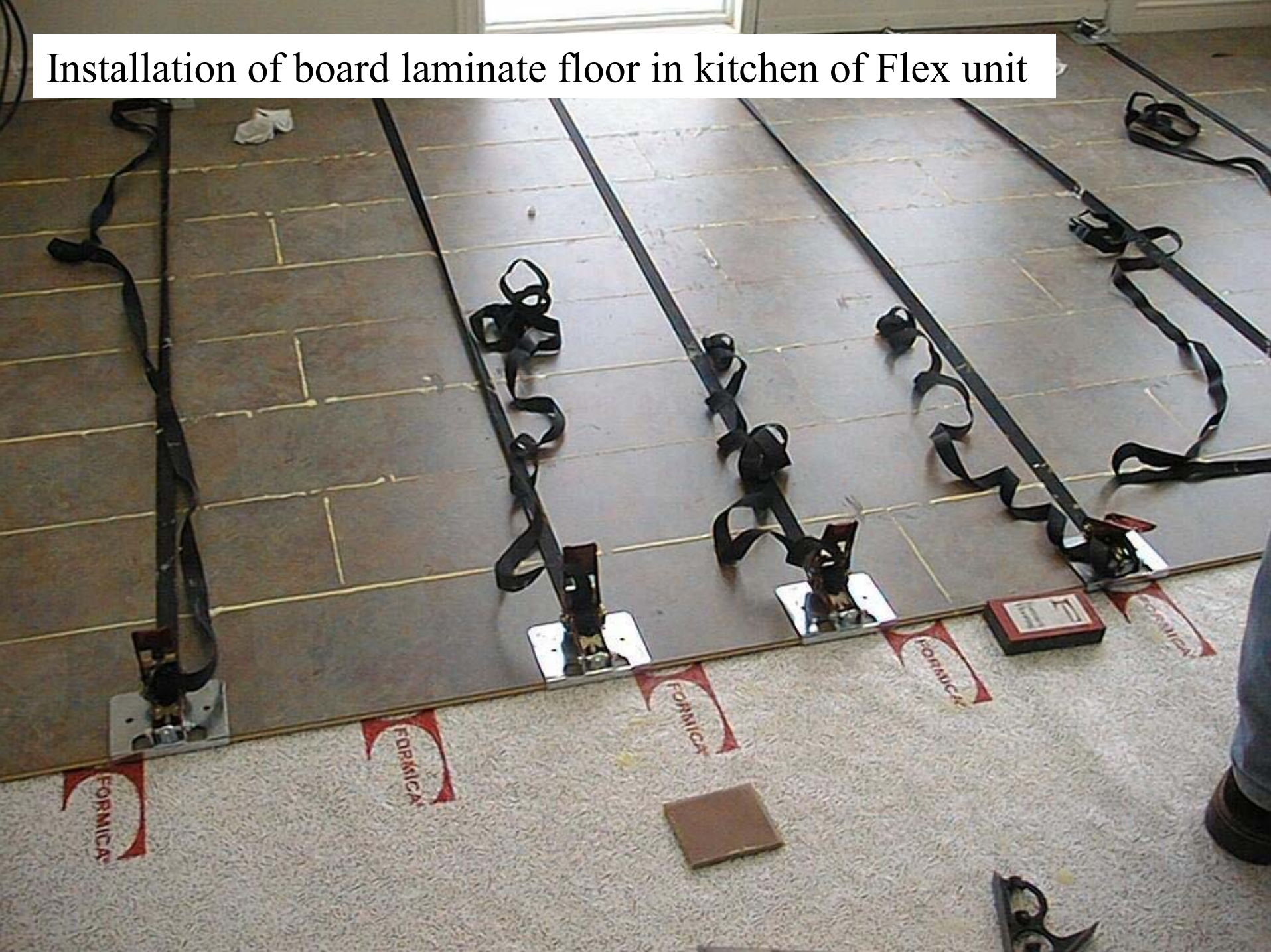
Attic with blown insulation



Detail of water membrane and tile in shower stall



Installation of board laminate floor in kitchen of Flex unit



Installation of glue down carpet in meeting room



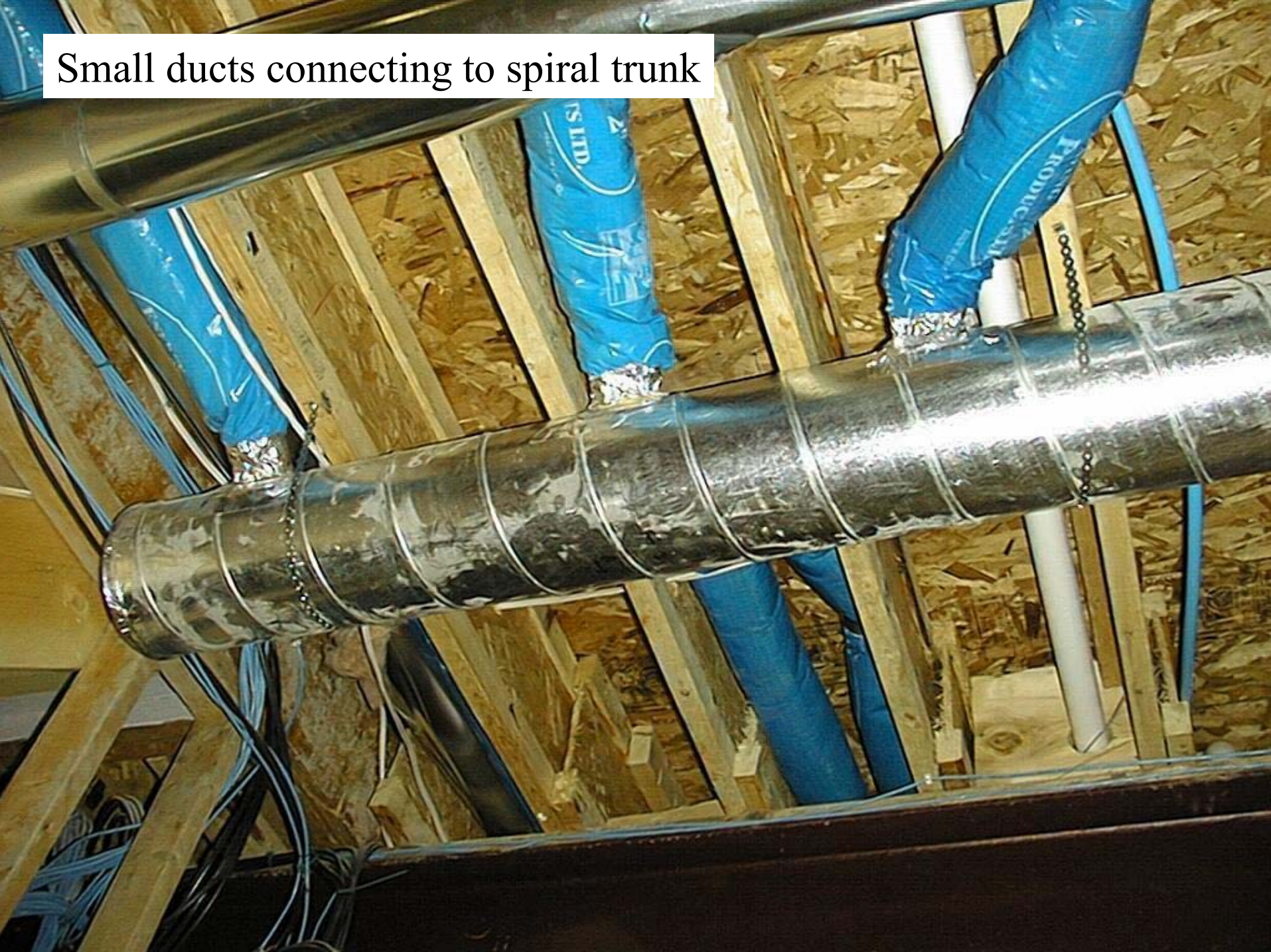
Detail of “T” bar drop ceiling system



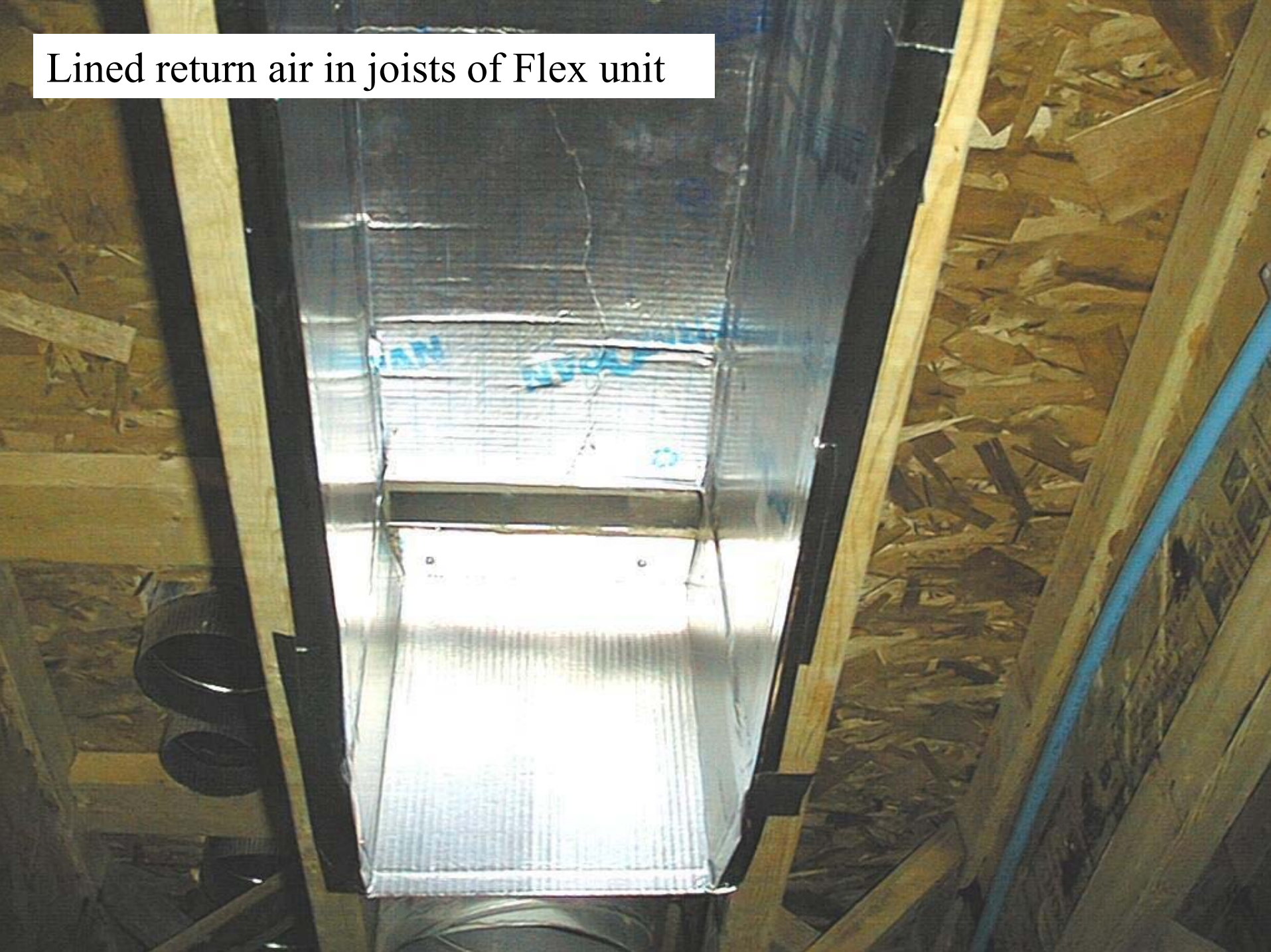
Small duct heating register (50 mm) in Flex unit



Small ducts connecting to spiral trunk



Lined return air in joists of Flex unit



Lifebreath equipment serving ground floor



Interior view of Lifebreath Clean Air Furnace with integral HRV



Interior view of Enerzone fan coil



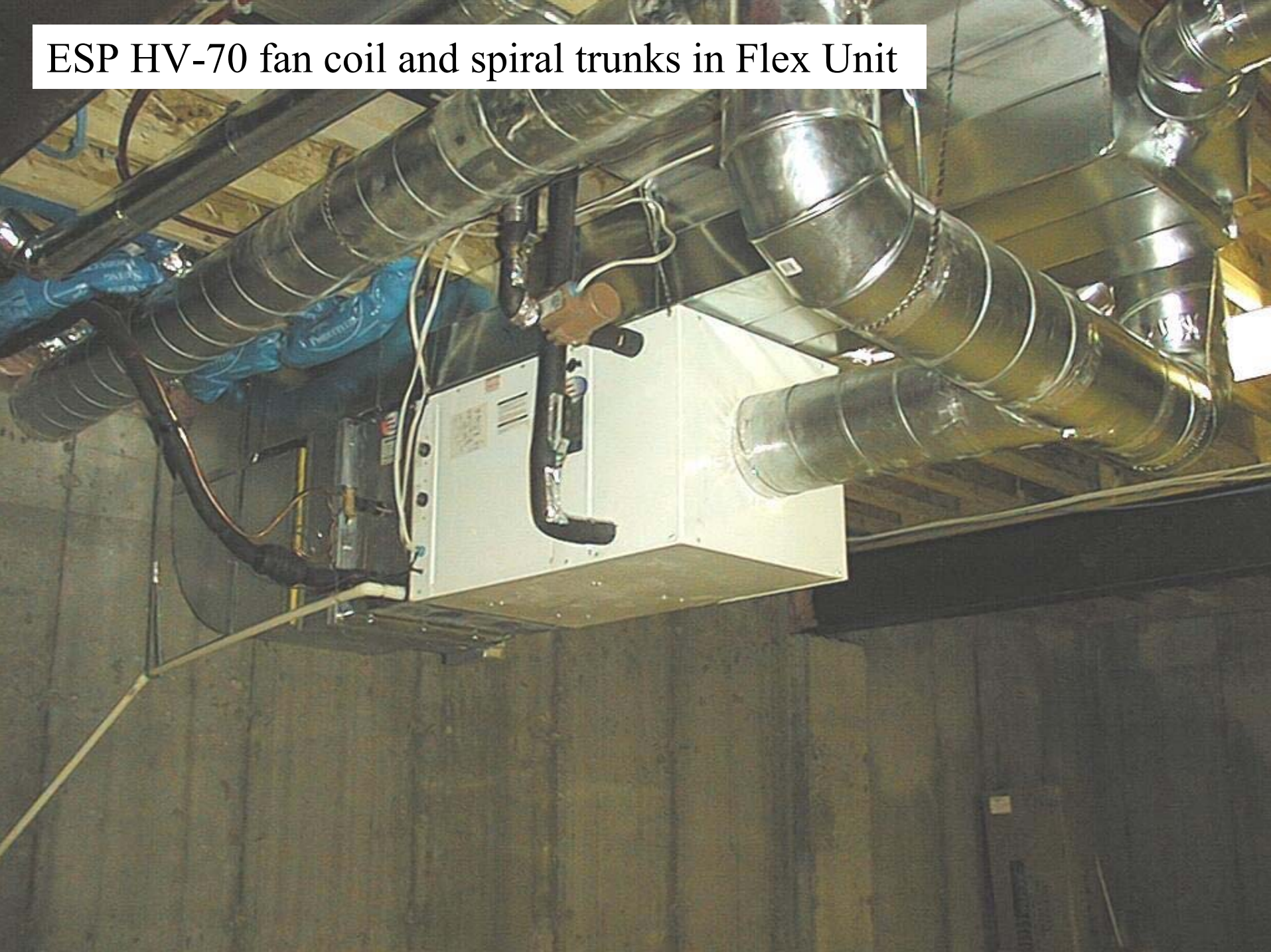
Dual Venmar Duo 1.9 ERV's serving second floor



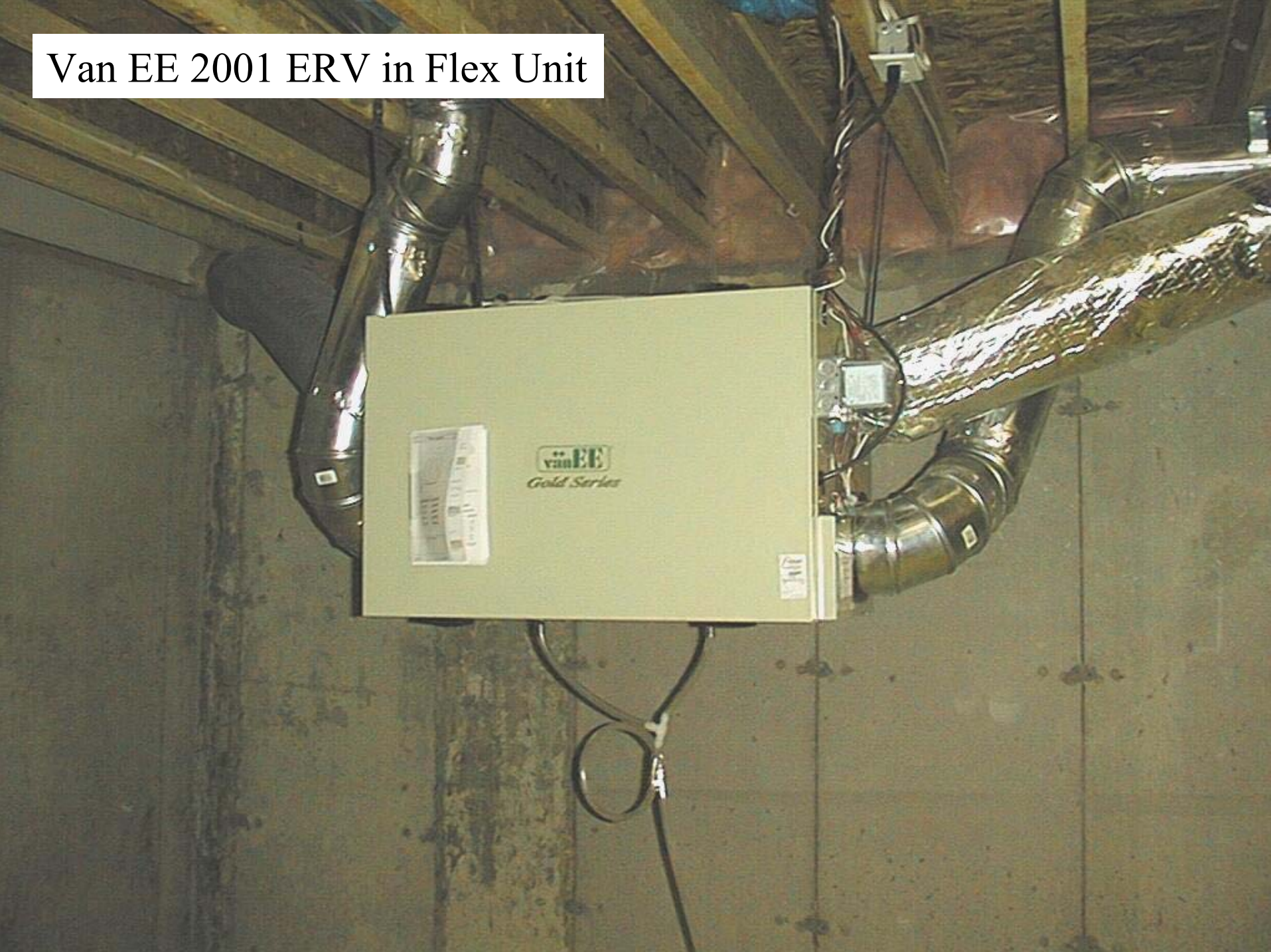
Polaris high efficiency direct vent water tank and plumbing manifolds in Flex Unit



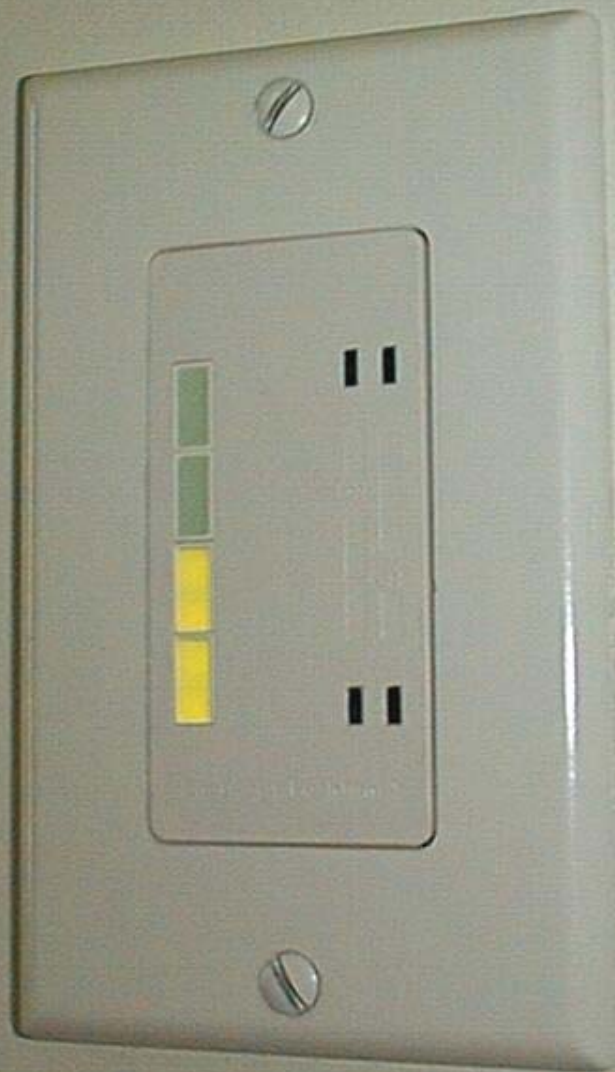
ESP HV-70 fan coil and spiral trunks in Flex Unit



Van EE 2001 ERV in Flex Unit



Posh ventilation timer controller in Flex Unit bathroom



Whisper grille extended for peak bathroom ventilation



Foundation construction mock-up in display area

