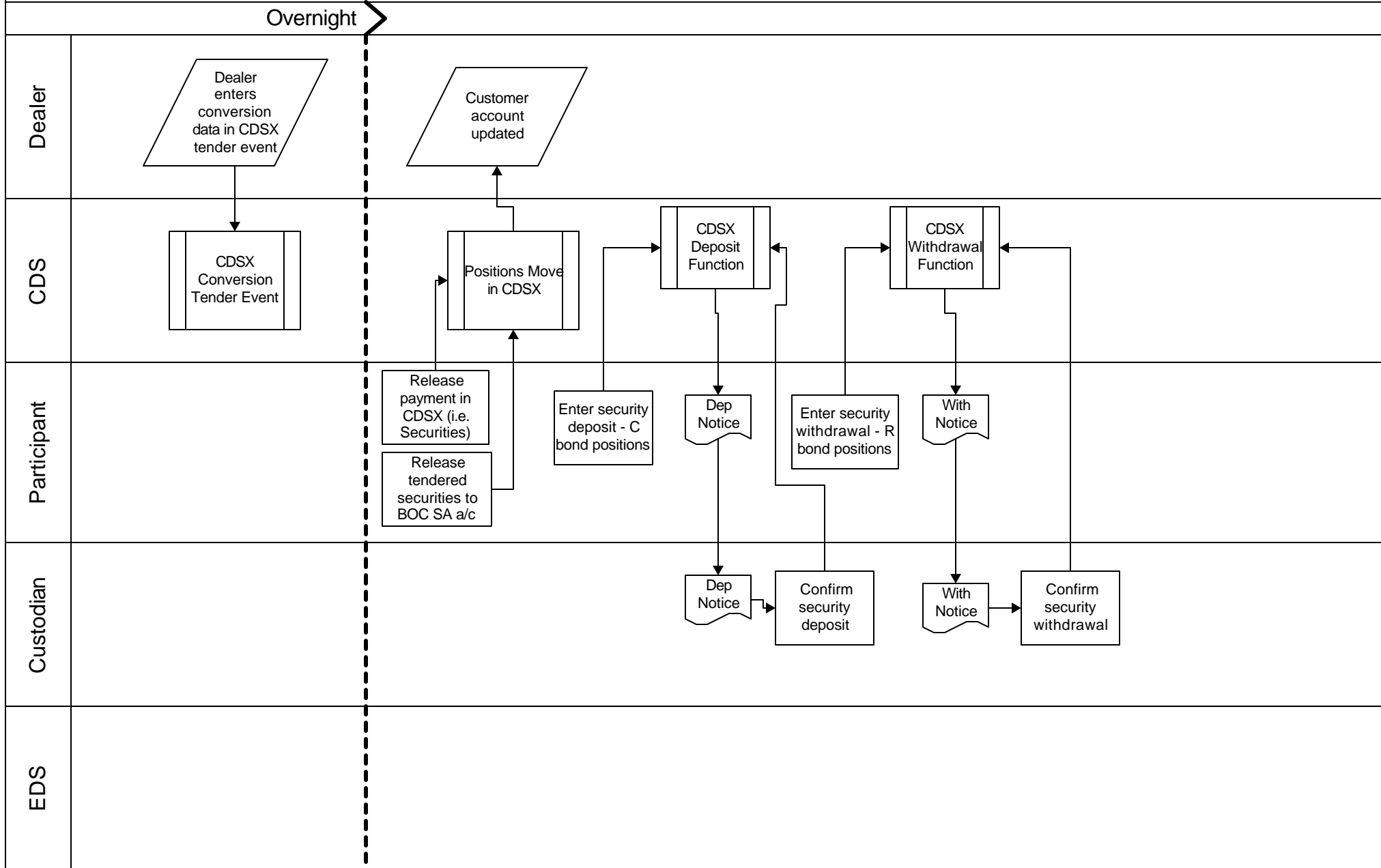


CDSX Conversion from Regular to Compound - Products CSB/CPB/CIB



All tender events in which there are securities in and securities out will require both a CDSX deposit and a withdrawal. The majority of the activity will occur on the day after the details have been entered in the event. The transfer agent will update the record of holding in bulk. R to C transactions can only occur in the 10 months after the issue date.