



# THE MONITOR

## THIRD QUARTER DATA 2005

### NEW PERMANENT RESIDENTS

In the third quarter of 2005, 75,951 new permanent residents landed in Canada, a 16% increase over the third quarter of 2004. With more new permanent residents landing in each of the first three quarters of 2005, the year-to-date total of 206,859 was 10% higher than the 2004 level after the first three quarters.

For the first time in 2005, the number of new family class immigrants (16,488) exceeded the corresponding quarterly amount for 2004. However, the modest increase of nearly 8% for the quarter was overshadowed by lower levels in the first two quarters. As a result, the year-to-date total for the family class remained 12% lower than the comparable figure for 2004. The economic class continued to show strong numbers in the third quarter. At the end of this quarter, the number of economic principal applicants was 18% higher than it was in 2004 and the number of economic spouses and dependants was 29% higher. Both economic categories showed increases in the number of skilled workers, business immigrants and provincial/territorial nominees. Refugee landings for the third quarter were 9,331, up 26%

from the third quarter of 2004. The third quarter increase compensated for the declines in the first two quarters and brought the year-to-date total in line with that of 2004.

There was no change in the ranking of the top five countries of last permanent residence. China remained the top source country (11,161), with a 19% increase for the quarter. China was followed by India (9,142), the Philippines (5,353), Pakistan (4,188) and the United States (2,514). There was also no change in the top three destinations of new permanent residents. Ontario remained the top destination, welcoming 40,533 new permanent residents, an increase of nearly 17% for the quarter. Quebec and British Columbia followed with 13,057 and 12,452 new permanent residents, respectively.

### FOREIGN WORKERS

Foreign worker flows were 27,643 in the third quarter of 2005, nearly equivalent to the flow in the third quarter of 2004. The number of workers in all skill levels showed modest increases over third quarter flows for 2004. As was the case in 2004, after three quarters, the United States had the largest flow of foreign workers to Canada, equalling 12,982.

Mexico was a close second with a flow of 12,348, up 9% from the year-to-date flow in 2004. France, with a 13% increase in the year-to-date flow, was third-ranked, followed by Jamaica and Japan. Ontario, British Columbia and Quebec remained the top three destinations for foreign workers.

### FOREIGN STUDENTS

Foreign student flows in the third quarter were 8.5% higher than in the third quarter of 2004. This was largely driven by the 56.5% increase, for the quarter, in the flow of foreign students enrolled in other post-secondary education (which includes students who intend to take post-secondary courses but who are currently enrolled in qualifying programs). South Korea remained the leading source country for the quarter, sending 10,468 foreign students to Canada in the first three quarters of 2005. China (5,941) remained the second-ranked source country for foreign student flows and Japan (4,270) remained third-ranked. Ontario (17,325) was the top destination for foreign students after the first three quarters, with British Columbia (16,503) a very close second. Quebec (7,999) was the third-ranked destination for foreign students.

## A LOOK AT THE REFUGEE CLAIMANT POPULATION IN CANADA

This article<sup>1</sup> takes a first look at the characteristics of the refugee claimant population in Canada, particularly principal applicants, between 1995 and 2004. It includes characteristics of the population such as the claimants' age and gender, country of alleged persecution and provincial destination. The data in the paper are derived from information available, up to December 31, 2004, in the "Refugee Continuum" administrative database.<sup>2</sup>

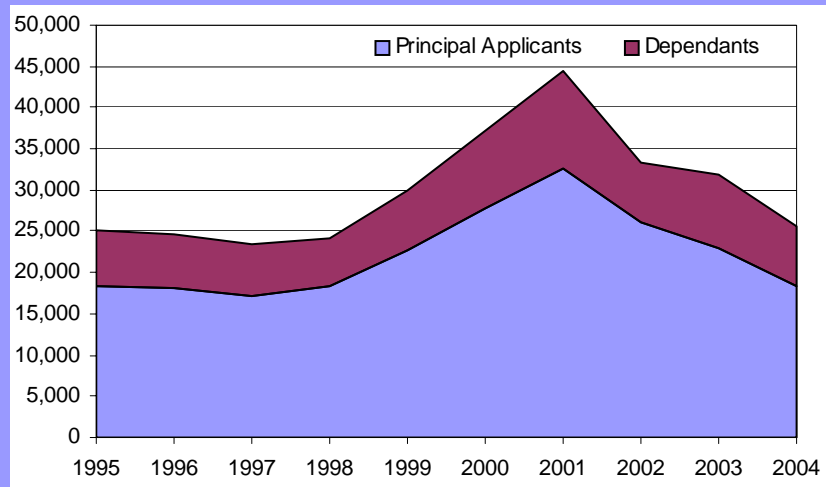
### CLAIMS FOR REFUGEE PROTECTION IN CANADA

Between 1995 and 1998, the number of individuals seeking refugee protection in Canada hovered at roughly 25,000 a year. Beginning in 1998,

<sup>1</sup> This article is the first part of a descriptive analysis of the refugee claimant population. The second part of the analysis, to be published in an upcoming issue of *The Monitor*, will describe the volumes and processing times as the refugee claimant population progresses through the different stages of the determination, landing and removal processes.

<sup>2</sup> The "Refugee Continuum" is a CIC database that follows claimants as they proceed through the determination, landing and removal processes. It provides the basis for the measurement of volumes and processing times as claimants progress through different stages of the determination, landing and removal processes, with the capacity to distinguish between origins and destinations and other characteristics of claimant groups.

Figure 1: Refugee Claimant Population: Claim Years, 1995–2004



Source: "Refugee Continuum," CIC database.

however, this number increased, peaking at 44,485 in 2001. In subsequent years, the number began to decline, falling to 25,485 by 2004, back to the number of refugee claimants seen before the peak.

Over the 10-year period, principal applicants accounted for, on average, 74% of the refugee claimant population. Between 1995 and 1998, roughly 18,000 refugee claimants a year were principal applicants. Mirroring the overall trend in the refugee claimant population, this number rose to 32,664 between 1999 and 2001, but by 2004, it had returned to 18,327. The same trend was seen for refugee claimant dependants. In the late 1990s, there were approximately 6,500 dependants a year. This number increased to 11,921 in 2001 before falling back to 7,158 in 2004. These numbers represent an average of four dependants for every 10 principal applicants. However, the ratio varied across countries of alleged persecution. For example, China recorded an

average of one dependant for every 10 principal applicants, while Colombia averaged eight dependants for every 10 principal applicants.

### AGE AND GENDER

The majority of principal applicants at the time of their claim were adults: 62% were 18 to 34 years old; 31% were between 35 and 64; and just 2% were 65 or older. The remaining 5% were children under 18 years of age.

Not surprisingly, the age distribution for dependants was very different. The majority (68%) were children under 18 years of age, while less than one-third were adults (31% aged 18–64 and less than 1% aged 65 or older).

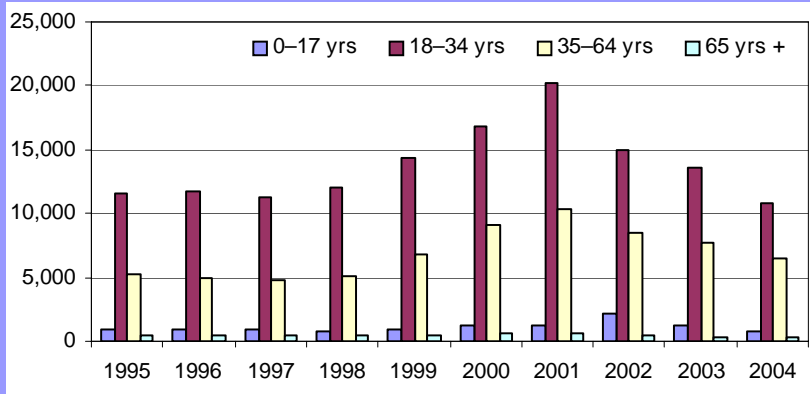
Between 1995 and 2004, male principal applicants outnumbered their female counterparts by a ratio of approximately 2:1. However, the gender differences have diminished since the mid-1990s. Between 1995 and 2001, about 32% of principal applicants were

female. This number has risen to 36% since 2002.

Conversely, dependants have consistently been more likely to

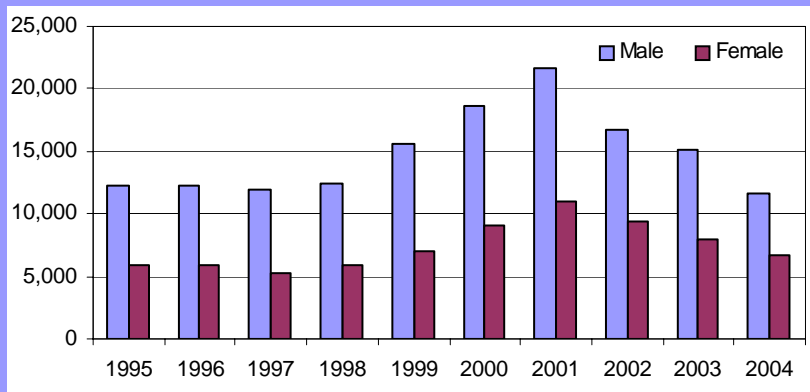
be female. Between 1995 and 2004, 61% of all dependants were female. Although there was gender parity among dependants under 18 years of age, adult female dependants outnumbered their male counterparts by a ratio of 7:1. In terms of numbers, this translated into about 19,000 more female dependants than males aged 18 or older.

**Figure 2: Refugee Claimant Population (Principal Applicants) by Age at Claim: Claim Years, 1995–2004**



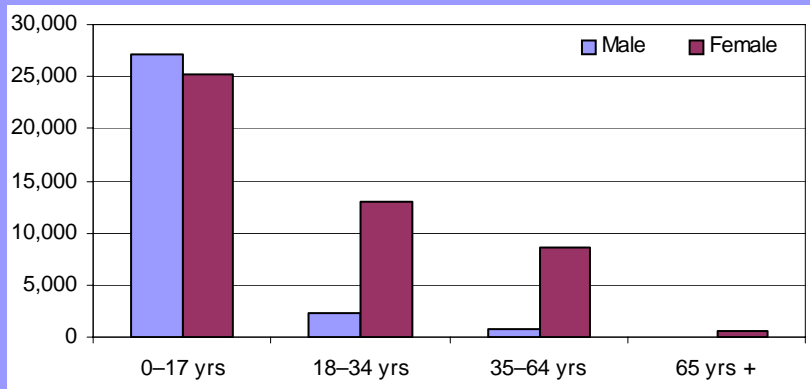
Source: "Refugee Continuum," CIC database.

**Figure 3: Refugee Claimant Population (Principal Applicants) by Gender: Claim Years, 1995–2004**



Source: "Refugee Continuum," CIC database.

**Figure 4: Refugee Claimant Population (Dependants) by Gender and Age at Claim: Cumulative Total, Claim Years, 1995–2004**



Source: "Refugee Continuum," CIC database.

### COUNTRIES OF ALLEGED PERSECUTION

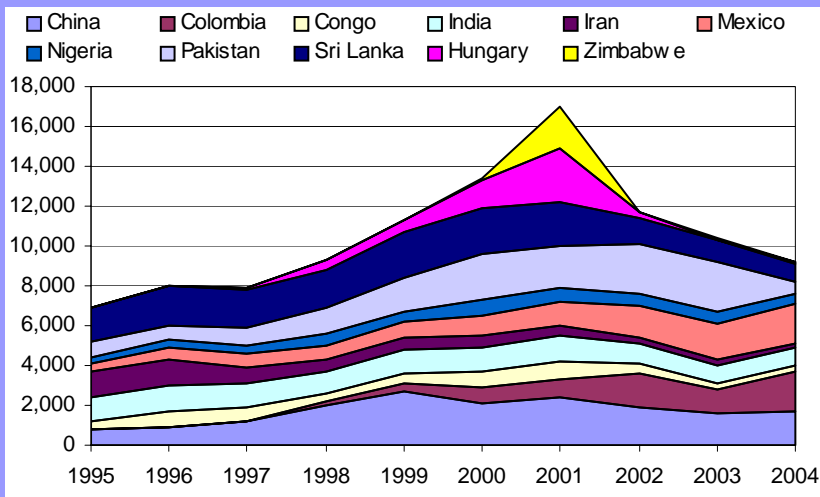
In this and the next sections, refugee claimants refer to principal applicants only, unless otherwise stated.

#### 1995–2004

During the 1995–2004 period, the top 10 countries of alleged persecution accounted for 46% of refugee claimants in Canada: China, Colombia, the Democratic Republic of Congo, Hungary, India, Iran, Mexico, Nigeria, Pakistan and Sri Lanka. Although Zimbabwe was the fourth ranked source country in 2001, this was an anomaly due to a one-time sharp increase in the number of claimants from this country. In 2001, the number of claimants from Zimbabwe increased to 2,144 from 182 in 2000. The country ranked 133<sup>rd</sup> in 1995 and 54<sup>th</sup> in 2004.

Claims for refugee protection from each top 10 country of alleged persecution have shown distinct patterns over time and each country's importance in Canada's overall refugee claimant population has varied widely.

**Figure 5: Refugee Claimant Population (Principal Applicants) by Principal Country of Alleged Persecution: Claim Years, 1995–2004**



Source: "Refugee Continuum," CIC database.

### 1995–1998

Between 1995 and 1998, Sri Lanka was the principal country of alleged persecution, accounting for 10.4% of the total refugee claimant population, followed by China (6.7%), India (6.5%) and Iran (5.6%). During this period, two countries exhibited large increases in refugee claimants and increased in rank among source countries. Flows from China increased by 160%, to 1,995 in 1998, making it the top ranked source country and dropping Sri Lanka to second spot. The number of claimants from Hungary rose from 22 in 1995 to 516 in 1998, making it the ninth-ranked country of alleged persecution. Hungary was ranked 74<sup>th</sup> in 1995.

### 1999–2001

In 2001, Canada experienced a dramatic increase in claims for refugee protection. At the end of that year, there were roughly 33,000 claims made in Canada,

rising from almost 23,000 in 1999.

Zimbabwe emerged as the major source of refugee claimants during this period. In 2001, Canada experienced a significant increase in claimants from Zimbabwe. As a result of this increase, Zimbabwe accounted for nearly 19% of the overall increase in the refugee claimant population between 1999 and 2001. Almost equally important was Hungary. In 2001, refugee claimant numbers from Hungary were 2,707—an increase of nearly 300% over 1999 numbers. As the fastest growing source of refugee claimants among the top 10 countries, Hungary ranked first by 2001, displacing Pakistan.

After 1998, other top source countries that recorded significant increases in refugee claimant numbers were Colombia (140%), the Democratic Republic of Congo (66%), Mexico (55%) and Nigeria (40%). In total, they accounted for 12.5% of the

overall increase in refugee claimants between 1999 and 2001. Another 6% was attributable to the rest of the top 10 countries, excluding China and Iran.

### 2002–2004

The number of refugee claimants from seven top countries of alleged persecution declined from 2002 to 2004. Most obvious among these countries was Hungary, with an 86% decline in the number of claimants in 2004; Pakistan, with a decline of 76%; and the Democratic Republic of Congo and Sri Lanka with 38% and 28% declines, respectively.

Conversely, Mexico, Colombia and Iran had increasing numbers of refugee claimants. The number of claimants from Mexico rose by 22% (from 1,605 to 1,959), from Colombia by 16% (from 1,654 to 1,915) and from Iran by 12% (from 256 to 287).

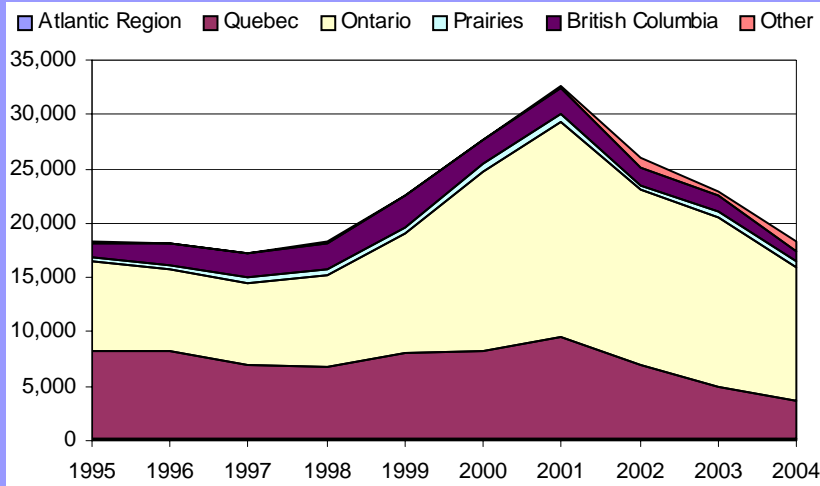
Both Mexico and Colombia have become increasingly prominent countries of alleged persecution since 1995. By 2004, Mexico was the top source country of refugee claimants, a significant move from 14<sup>th</sup> position only a decade before. The trend was similar for Colombia, which moved from 53<sup>rd</sup> to second spot in 10 years. China's numbers have declined since 2003. However, the country remained the third largest source of refugee claimants in Canada during 2004.

**PROVINCIAL  
DESTINATIONS**

Ontario, Quebec and British Columbia are the top three provincial destinations for refugee claimants. Between 1995 and 2004, Ontario was the destination of 55% of claimants (123,199), followed by Quebec with 70,002 (32%) and British Columbia with 18,929 (9%).

While Ontario's importance has been increasing since 1995, that of Quebec and British Columbia has been decreasing since 1995 and 1998, respectively. Between 1995 and 2004, Ontario's share of claimants increased steadily from 45% to 68% (with only a short pause in 1996)<sup>3</sup>. At the same time, Quebec's share decreased significantly from 45% to 19%. British Columbia's share fluctuated slightly over time, from 7% in 1995 to 13% in 1998 and back to 6% in 2004.

**Figure 6: Refugee Claimant Population (Principal Applicants) by Provincial Destination: Claim Years, 1995–2004**



Source: "Refugee Continuum," CIC database.

<sup>3</sup> In 1996, the province's share of refugee claimants was only 41%, second to Quebec's share at 44%.

## ANNEX – TABLES

Table 1: Immigration by Category (Principal Applicants, Spouses and Dependants)

IMMIGRANTS	2004						2005				Difference YTD 2005 / YTD 2004
	Total	Q1	Q2	Q3	YTD	Q4	Q1	Q2	Q3	YTD	
Spouses and partners	43,985	10,330	12,644	11,357	34,331	9,654	10,005	11,899	11,911	33,815	-2%
Parents and grandparents	12,732	3,856	4,707	2,549	11,112	1,620	1,093	1,525	3,006	5,624	-49%
Others	5,529	1,367	1,459	1,390	4,216	1,313	1,180	1,360	1,571	4,111	-2%
<b>Total family class</b>	<b>62,246</b>	<b>15,553</b>	<b>18,810</b>	<b>15,296</b>	<b>49,659</b>	<b>12,587</b>	<b>12,278</b>	<b>14,784</b>	<b>16,488</b>	<b>43,550</b>	<b>-12%</b>
Skilled workers - principal applicants	47,889	10,362	13,296	13,962	37,620	10,269	12,175	16,592	15,147	43,914	17%
Business immigrants - principal applicants	2,708	515	575	958	2,048	660	855	960	1,222	3,037	48%
Live-in caregivers - principal applicants	3,296	975	1,034	764	2,773	523	856	1,102	849	2,807	1%
Provincial/territorial nominees - principal applicants	2,086	433	571	562	1,566	520	599	785	812	2,196	40%
<b>Total economic class - principal applicants</b>	<b>55,979</b>	<b>12,285</b>	<b>15,476</b>	<b>16,246</b>	<b>44,007</b>	<b>11,972</b>	<b>14,485</b>	<b>19,439</b>	<b>18,030</b>	<b>51,954</b>	<b>18%</b>
Skilled workers - spouses and dependants	65,553	13,125	17,969	20,927	52,021	13,532	16,229	24,581	25,061	65,871	27%
Business immigrants - spouses and dependants	7,056	1,339	1,412	2,622	5,373	1,683	2,280	2,548	3,440	8,268	54%
Live-in caregivers - spouses and dependants	996	405	242	195	842	154	125	242	229	596	-29%
Provincial/territorial nominees - spouses and dependants	4,162	796	1,183	1,230	3,209	953	993	1,526	1,817	4,336	35%
<b>Total economic class - spouses and dependants</b>	<b>77,767</b>	<b>15,665</b>	<b>20,806</b>	<b>24,974</b>	<b>61,445</b>	<b>16,322</b>	<b>19,627</b>	<b>28,897</b>	<b>30,547</b>	<b>79,071</b>	<b>29%</b>
Skilled workers - p.a.,* spouses and dependants	113,442	23,487	31,265	34,889	89,641	23,801	28,404	41,173	40,208	109,785	22%
Business immigrants - p.a.,* spouses and dependants	9,764	1,854	1,987	3,580	7,421	2,343	3,135	3,508	4,662	11,305	52%
Live-in caregivers - p.a.,* spouses and dependants	4,292	1,380	1,276	959	3,615	677	981	1,344	1,078	3,403	-6%
Provincial/territorial nominees - p.a.,* spouses and dependants	6,248	1,229	1,754	1,792	4,775	1,473	1,592	2,311	2,629	6,532	37%
<b>Total economic class</b>	<b>133,746</b>	<b>27,950</b>	<b>36,282</b>	<b>41,220</b>	<b>105,452</b>	<b>28,294</b>	<b>34,112</b>	<b>48,336</b>	<b>48,577</b>	<b>131,025</b>	<b>24%</b>
Post-determination refugee claimants	46	13	13	12	38	8	4	5	3	12	-68%
Deferred removal order class	7	2	1	1	4	3	-	2	4	6	50%
<b>Total other</b>	<b>53</b>	<b>15</b>	<b>14</b>	<b>13</b>	<b>42</b>	<b>11</b>	<b>4</b>	<b>7</b>	<b>7</b>	<b>18</b>	<b>-57%</b>
<b>Total immigrants</b>	<b>196,045</b>	<b>43,518</b>	<b>55,106</b>	<b>56,529</b>	<b>155,153</b>	<b>40,892</b>	<b>46,394</b>	<b>63,127</b>	<b>65,072</b>	<b>174,593</b>	<b>13%</b>
Government-assisted refugees	7,411	1,733	1,915	1,983	5,631	1,780	1,651	1,799	2,038	5,488	-3%
Privately sponsored refugees	3,115	880	1,037	625	2,542	573	515	772	1,031	2,318	-9%
Refugees landed in Canada (asylum)	15,901	5,181	5,519	2,962	13,662	2,239	5,319	5,550	4,834	15,703	15%
Dependants abroad of refugees landed in Canada	6,258	1,508	1,721	1,823	5,052	1,206	1,093	1,341	1,428	3,862	-24%
<b>Total refugees</b>	<b>32,685</b>	<b>9,302</b>	<b>10,192</b>	<b>7,393</b>	<b>26,887</b>	<b>5,798</b>	<b>8,578</b>	<b>9,462</b>	<b>9,331</b>	<b>27,371</b>	<b>2%</b>
<b>Total immigrants and refugees</b>	<b>228,730</b>	<b>52,820</b>	<b>65,298</b>	<b>63,922</b>	<b>182,040</b>	<b>46,690</b>	<b>54,972</b>	<b>72,589</b>	<b>74,403</b>	<b>201,964</b>	<b>11%</b>
Permit holders applying for permanent residence	148	31	43	36	110	38	22	33	23	78	-29%
Humanitarian and compassionate cases / Public policy	6,945	2,061	1,900	1,620	5,581	1,364	1,443	1,849	1,518	4,810	-14%
Backlog	1	-	1	-	1	-	-	-	7	7	600%
<b>Total</b>	<b>235,824</b>	<b>54,912</b>	<b>67,242</b>	<b>65,578</b>	<b>187,732</b>	<b>48,092</b>	<b>56,437</b>	<b>74,471</b>	<b>75,951</b>	<b>206,859</b>	<b>10%</b>

\* p.a. = principal applicants

*Table 2: Immigration by Top Ten Source Countries (Principal Applicants, Spouses and Dependants)*

Country of Last Permanent Residence	2004							2005					Difference YTD 2005 / YTD 2004
	Total	Q1	Q2	Q3	YTD	Q4	YTD Rank	Q1	Q2	Q3	YTD	YTD Rank	
China, People's Republic of	36,411	9,401	10,196	9,353	28,950	7,461	1	10,843	11,684	11,161	33,688	1	16%
India	25,569	5,046	7,253	7,505	19,804	5,765	2	5,468	10,327	9,142	24,937	2	26%
Philippines	13,301	3,112	4,158	3,604	10,874	2,427	3	2,808	5,677	5,353	13,838	3	27%
Pakistan	12,796	2,806	4,066	3,423	10,295	2,501	4	2,685	3,826	4,188	10,699	4	4%
United States	7,494	1,830	2,068	1,865	5,763	1,731	5	2,233	2,553	2,514	7,300	5	27%
Korea, Republic of	5,337	1,033	1,325	1,695	4,053	1,284	9	1,732	1,523	1,564	4,819	6	19%
United Kingdom	6,058	1,318	1,737	1,709	4,764	1,294	8	1,354	1,555	1,685	4,594	7	-4%
France	5,026	1,019	1,404	1,585	4,008	1,018	10	1,243	1,699	1,594	4,536	8	13%
Colombia	4,438	1,139	1,290	1,094	3,523	915	13	1,283	1,275	1,911	4,469	9	27%
Iran	6,063	1,500	1,739	1,872	5,111	952	6	1,039	1,384	1,846	4,269	10	-16%
<b>Total - 2005 YTD Top Ten Only</b>	<b>122,493</b>	<b>28,204</b>	<b>35,236</b>	<b>33,705</b>	<b>97,145</b>	<b>25,348</b>		<b>30,688</b>	<b>41,503</b>	<b>40,958</b>	<b>113,149</b>		<b>16%</b>
<b>Total - Other Countries</b>	<b>113,331</b>	<b>26,708</b>	<b>32,006</b>	<b>31,873</b>	<b>90,587</b>	<b>22,744</b>		<b>25,749</b>	<b>32,968</b>	<b>34,993</b>	<b>93,710</b>		<b>3%</b>
<b>Total</b>	<b>235,824</b>	<b>54,912</b>	<b>67,242</b>	<b>65,578</b>	<b>187,732</b>	<b>48,092</b>		<b>56,437</b>	<b>74,471</b>	<b>75,951</b>	<b>206,859</b>		<b>10%</b>

*Table 3: Immigration by Destination (Principal Applicants, Spouses and Dependants)*

Province Census Metropolitan Area	2004						2005				Difference YTD 2005 / YTD 2004
	Total	Q1	Q2	Q3	YTD	Q4	Q1	Q2	Q3	YTD	
St. John's	424	106	127	138	371	53	110	112	79	301	-19%
Other Newfoundland and Labrador	155	45	32	38	115	40	37	13	30	80	-30%
<b>Total Newfoundland and Labrador</b>	<b>579</b>	<b>151</b>	<b>159</b>	<b>176</b>	<b>486</b>	<b>93</b>	<b>147</b>	<b>125</b>	<b>109</b>	<b>381</b>	<b>-22%</b>
<b>Total Prince Edward Island</b>	<b>310</b>	<b>82</b>	<b>89</b>	<b>53</b>	<b>224</b>	<b>86</b>	<b>72</b>	<b>101</b>	<b>98</b>	<b>271</b>	<b>21%</b>
Halifax	1,355	299	341	446	1,086	269	245	353	544	1,142	5%
Other Nova Scotia	415	94	118	100	312	103	83	109	136	328	5%
<b>Total Nova Scotia</b>	<b>1,770</b>	<b>393</b>	<b>459</b>	<b>546</b>	<b>1,398</b>	<b>372</b>	<b>328</b>	<b>462</b>	<b>680</b>	<b>1,470</b>	<b>5%</b>
Saint John	187	39	39	46	124	63	51	62	124	237	91%
Other New Brunswick	608	143	193	153	489	119	127	244	243	614	26%
<b>Total New Brunswick</b>	<b>795</b>	<b>182</b>	<b>232</b>	<b>199</b>	<b>613</b>	<b>182</b>	<b>178</b>	<b>306</b>	<b>367</b>	<b>851</b>	<b>39%</b>
Québec	2,128	503	557	573	1,633	495	427	560	617	1,604	-2%
Montréal	37,864	8,977	10,562	10,686	30,225	7,639	8,057	10,882	11,117	30,056	-1%
Gatineau	1,020	210	305	264	779	241	201	238	351	790	1%
Other Quebec	3,227	652	900	887	2,439	788	662	812	972	2,446	0%
<b>Total Quebec</b>	<b>44,239</b>	<b>10,342</b>	<b>12,324</b>	<b>12,410</b>	<b>35,076</b>	<b>9,163</b>	<b>9,347</b>	<b>12,492</b>	<b>13,057</b>	<b>34,896</b>	<b>-1%</b>
Ottawa	6,379	1,488	1,841	1,825	5,154	1,225	1,400	1,749	1,898	5,047	-2%
Toronto	99,868	22,948	29,186	27,629	79,763	20,105	23,190	32,866	32,149	88,205	11%
Hamilton	4,089	947	1,188	1,183	3,318	771	920	1,288	1,402	3,610	9%
London	2,328	553	669	612	1,834	494	798	774	1,039	2,611	42%
Other Ontario	12,446	2,785	3,464	3,492	9,741	2,705	2,956	3,812	4,045	10,813	11%
<b>Total Ontario</b>	<b>125,110</b>	<b>28,721</b>	<b>36,348</b>	<b>34,741</b>	<b>99,810</b>	<b>25,300</b>	<b>29,264</b>	<b>40,489</b>	<b>40,533</b>	<b>110,286</b>	<b>10%</b>
Winnipeg	5,911	1,250	1,806	1,622	4,678	1,233	1,267	1,867	1,747	4,881	4%
Other Manitoba	1,516	280	428	440	1,148	368	401	489	738	1,628	42%
<b>Total Manitoba</b>	<b>7,427</b>	<b>1,530</b>	<b>2,234</b>	<b>2,062</b>	<b>5,826</b>	<b>1,601</b>	<b>1,668</b>	<b>2,356</b>	<b>2,485</b>	<b>6,509</b>	<b>12%</b>
Regina	656	159	223	134	516	140	172	192	168	532	3%
Saskatoon	802	175	239	201	615	187	197	273	178	648	5%
Other Saskatchewan	484	102	122	137	361	123	163	178	173	514	42%
<b>Total Saskatchewan</b>	<b>1,942</b>	<b>436</b>	<b>584</b>	<b>472</b>	<b>1,492</b>	<b>450</b>	<b>532</b>	<b>643</b>	<b>519</b>	<b>1,694</b>	<b>14%</b>
Calgary	9,441	2,315	2,683	2,587	7,585	1,856	2,527	2,976	3,271	8,774	16%
Edmonton	5,047	1,268	1,326	1,423	4,017	1,030	1,311	1,744	1,690	4,745	18%
Other Alberta	1,980	489	597	512	1,598	382	518	571	629	1,718	8%
<b>Total Alberta</b>	<b>16,468</b>	<b>4,072</b>	<b>4,606</b>	<b>4,522</b>	<b>13,200</b>	<b>3,268</b>	<b>4,356</b>	<b>5,291</b>	<b>5,590</b>	<b>15,237</b>	<b>15%</b>
Vancouver	32,667	7,890	9,012	9,131	26,033	6,634	9,352	10,904	10,901	31,157	20%
Victoria	1,067	245	242	323	810	257	307	320	331	958	18%
Other British Columbia	3,284	828	901	905	2,634	650	845	942	1,220	3,007	14%
<b>Total British Columbia</b>	<b>37,018</b>	<b>8,963</b>	<b>10,155</b>	<b>10,359</b>	<b>29,477</b>	<b>7,541</b>	<b>10,504</b>	<b>12,166</b>	<b>12,452</b>	<b>35,122</b>	<b>19%</b>
<b>Total Territories</b>	<b>159</b>	<b>40</b>	<b>51</b>	<b>35</b>	<b>126</b>	<b>33</b>	<b>40</b>	<b>38</b>	<b>47</b>	<b>125</b>	<b>-1%</b>
Not Stated	7	-	1	3	4	3	1	2	14	17	325%
<b>Total</b>	<b>235,824</b>	<b>54,912</b>	<b>67,242</b>	<b>65,578</b>	<b>187,732</b>	<b>48,092</b>	<b>56,437</b>	<b>74,471</b>	<b>75,951</b>	<b>206,859</b>	<b>10%</b>

Note: Destination coding is often amended after a record is entered in the administrative system. As a result, the number of people destined for a census metropolitan area is understated for the current quarter.

Table 4: Foreign Worker Flows by Skill Level

Skill Level*	2004						2005				Difference YTD 2005 / YTD 2004
	Total	Q1	Q2	Q3	YTD	Q4	Q1	Q2	Q3	YTD	
Skill Level 0	3,328	773	892	942	2,607	721	831	916	968	2,715	4%
Skill Level A	19,624	4,631	5,301	5,727	15,659	3,965	4,693	5,932	6,028	16,653	6%
Skill Level B	10,963	2,134	3,627	3,372	9,133	1,830	2,075	4,065	3,932	10,072	10%
Skill Level C	28,670	5,770	11,417	9,418	26,605	2,065	6,772	12,289	9,568	28,629	8%
Skill Level D	1,143	135	398	440	973	170	155	785	542	1,482	52%
Not Stated	29,588	5,754	8,308	7,528	21,590	7,998	6,073	8,389	6,605	21,067	-2%
<b>Total</b>	<b>93,316</b>	<b>19,197</b>	<b>29,943</b>	<b>27,427</b>	<b>76,567</b>	<b>16,749</b>	<b>20,599</b>	<b>32,376</b>	<b>27,643</b>	<b>80,618</b>	<b>5%</b>

\* National Occupational Classification

Table 5: Foreign Worker Flows by Top Ten Source Countries

Country of Last Permanent Residence	2004							2005				Difference YTD 2005 / YTD 2004	
	Total	Q1	Q2	Q3	YTD	Q4	YTD Rank	Q1	Q2	Q3	YTD		YTD Rank
United States	16,234	3,399	4,809	4,786	12,994	3,240	1	3,113	4,840	5,029	12,982	1	0%
Mexico	11,476	2,620	5,843	2,861	11,324	152	2	3,047	6,265	3,036	12,348	2	9%
France	6,546	1,493	2,365	1,667	5,525	1,021	4	1,668	2,756	1,827	6,251	3	13%
Jamaica	5,935	974	2,132	2,763	5,869	66	3	1,117	2,263	2,692	6,072	4	3%
Japan	5,446	1,217	2,309	1,522	5,048	398	6	1,644	2,644	1,295	5,583	5	11%
United Kingdom	7,530	1,259	1,877	1,936	5,072	2,458	5	1,344	1,806	1,731	4,881	6	-4%
Philippines	5,713	1,307	1,367	1,706	4,380	1,333	7	1,333	1,557	1,621	4,511	7	3%
Australia	7,211	1,625	1,317	1,147	4,089	3,122	8	1,520	1,467	1,236	4,223	8	3%
India	2,944	705	609	1,002	2,316	628	9	850	773	751	2,374	9	3%
Germany	2,379	465	610	913	1,988	391	10	603	634	916	2,153	10	8%
<b>Total - 2005 YTD Top Ten Only</b>	<b>71,414</b>	<b>15,064</b>	<b>23,238</b>	<b>20,303</b>	<b>58,605</b>	<b>12,809</b>		<b>16,239</b>	<b>25,005</b>	<b>20,134</b>	<b>61,378</b>		<b>5%</b>
<b>Total - Other Countries</b>	<b>21,902</b>	<b>4,133</b>	<b>6,705</b>	<b>7,124</b>	<b>17,962</b>	<b>3,940</b>		<b>4,360</b>	<b>7,371</b>	<b>7,509</b>	<b>19,240</b>		<b>7%</b>
<b>Total</b>	<b>93,316</b>	<b>19,197</b>	<b>29,943</b>	<b>27,427</b>	<b>76,567</b>	<b>16,749</b>		<b>20,599</b>	<b>32,376</b>	<b>27,643</b>	<b>80,618</b>		<b>5%</b>



Table 6: Foreign Worker Flows by Destination

Province	2004						2005				Difference YTD 2005 / YTD 2004
	Total	Q1	Q2	Q3	YTD	Q4	Q1	Q2	Q3	YTD	
<b>Census Metropolitan Area</b>											
St. John's	139	23	59	24	106	33	47	22	48	117	10%
Other Newfoundland and Labrador	962	218	312	290	820	142	256	337	275	868	6%
<b>Total Newfoundland and Labrador</b>	<b>1,101</b>	<b>241</b>	<b>371</b>	<b>314</b>	<b>926</b>	<b>175</b>	<b>303</b>	<b>359</b>	<b>323</b>	<b>985</b>	<b>6%</b>
<b>Total Prince Edward Island</b>	<b>77</b>	<b>12</b>	<b>20</b>	<b>28</b>	<b>60</b>	<b>17</b>	<b>10</b>	<b>22</b>	<b>90</b>	<b>122</b>	<b>103%</b>
Halifax	820	174	364	206	744	76	112	154	206	472	-37%
Other Nova Scotia	601	36	325	160	521	80	63	163	248	474	-9%
<b>Total Nova Scotia</b>	<b>1,421</b>	<b>210</b>	<b>689</b>	<b>366</b>	<b>1,265</b>	<b>156</b>	<b>175</b>	<b>317</b>	<b>454</b>	<b>946</b>	<b>-25%</b>
Saint John	90	15	23	32	70	20	24	30	32	86	23%
Other New Brunswick	498	103	135	176	414	84	130	188	128	446	8%
<b>Total New Brunswick</b>	<b>588</b>	<b>118</b>	<b>158</b>	<b>208</b>	<b>484</b>	<b>104</b>	<b>154</b>	<b>218</b>	<b>160</b>	<b>532</b>	<b>10%</b>
Québec	1,099	288	422	256	966	133	263	501	306	1,070	11%
Montréal	10,171	2,216	3,680	2,639	8,535	1,636	2,080	3,508	2,374	7,962	-7%
Gatineau	113	34	36	30	100	13	26	27	42	95	-5%
Other Quebec	3,494	597	1,772	890	3,259	235	734	2,123	1,040	3,897	20%
<b>Total Quebec</b>	<b>14,877</b>	<b>3,135</b>	<b>5,910</b>	<b>3,815</b>	<b>12,860</b>	<b>2,017</b>	<b>3,103</b>	<b>6,159</b>	<b>3,762</b>	<b>13,024</b>	<b>1%</b>
Ottawa	1,868	484	538	504	1,526	342	504	534	820	1,858	22%
Toronto	12,717	3,090	3,575	3,403	10,068	2,649	2,837	3,685	3,242	9,764	-3%
Hamilton	609	141	167	162	470	139	116	153	127	396	-16%
London	634	140	159	230	529	105	113	134	138	385	-27%
Other Ontario	27,267	5,467	10,027	9,763	25,257	2,010	5,911	10,209	9,699	25,819	2%
<b>Total Ontario</b>	<b>43,095</b>	<b>9,322</b>	<b>14,466</b>	<b>14,062</b>	<b>37,850</b>	<b>5,245</b>	<b>9,481</b>	<b>14,715</b>	<b>14,026</b>	<b>38,222</b>	<b>1%</b>
Winnipeg	1,009	219	326	304	849	160	174	289	293	756	-11%
Other Manitoba	609	105	154	183	442	167	74	355	208	637	44%
<b>Total Manitoba</b>	<b>1,618</b>	<b>324</b>	<b>480</b>	<b>487</b>	<b>1,291</b>	<b>327</b>	<b>248</b>	<b>644</b>	<b>501</b>	<b>1,393</b>	<b>8%</b>
Regina	215	37	76	65	178	37	31	77	90	198	11%
Saskatoon	395	71	130	130	331	64	100	133	118	351	6%
Other Saskatchewan	481	73	130	201	404	77	104	221	246	571	41%
<b>Total Saskatchewan</b>	<b>1,091</b>	<b>181</b>	<b>336</b>	<b>396</b>	<b>913</b>	<b>178</b>	<b>235</b>	<b>431</b>	<b>454</b>	<b>1,120</b>	<b>23%</b>
Calgary	3,242	723	839	854	2,416	826	817	965	943	2,725	13%
Edmonton	1,621	345	447	487	1,279	342	379	528	415	1,322	3%
Other Alberta	3,553	714	799	904	2,417	1,136	814	1,068	1,164	3,046	26%
<b>Total Alberta</b>	<b>8,416</b>	<b>1,782</b>	<b>2,085</b>	<b>2,245</b>	<b>6,112</b>	<b>2,304</b>	<b>2,010</b>	<b>2,561</b>	<b>2,522</b>	<b>7,093</b>	<b>16%</b>
Vancouver	13,888	2,768	4,044	3,749	10,561	3,327	3,220	4,496	3,067	10,783	2%
Victoria	538	38	44	339	421	117	85	280	226	591	40%
Other British Columbia	5,934	910	1,116	1,291	3,317	2,617	1,426	1,940	1,800	5,166	56%
<b>Total British Columbia</b>	<b>20,360</b>	<b>3,716</b>	<b>5,204</b>	<b>5,379</b>	<b>14,299</b>	<b>6,061</b>	<b>4,731</b>	<b>6,716</b>	<b>5,093</b>	<b>16,540</b>	<b>16%</b>
<b>Total Territories</b>	<b>186</b>	<b>48</b>	<b>69</b>	<b>39</b>	<b>156</b>	<b>30</b>	<b>45</b>	<b>79</b>	<b>118</b>	<b>242</b>	<b>55%</b>
Not Stated	486	108	155	88	351	135	104	155	140	399	14%
<b>Total</b>	<b>93,316</b>	<b>19,197</b>	<b>29,943</b>	<b>27,427</b>	<b>76,567</b>	<b>16,749</b>	<b>20,599</b>	<b>32,376</b>	<b>27,643</b>	<b>80,618</b>	<b>5%</b>

Note: Destination coding is often amended after a record is entered in the administrative system. As a result, the number of people destined for a census metropolitan area is understated for the current quarter.

Table 7: Foreign Student Flows by Level of Study

Level of Study	2004						2005				Difference YTD 2005 / YTD 2004
	Total	Q1	Q2	Q3	YTD	Q4	Q1	Q2	Q3	YTD	
Secondary or less	14,222	2,565	1,352	8,468	12,385	1,837	2,445	1,286	9,313	13,044	5%
Trade	8,544	2,705	1,814	2,556	7,075	1,469	2,514	1,615	2,342	6,471	-9%
University	21,848	2,402	1,903	15,506	19,811	2,037	2,379	1,629	15,891	19,899	0%
Other post-secondary	6,391	1,148	1,056	2,773	4,977	1,414	1,417	1,347	4,339	7,103	43%
Other	4,890	1,107	1,362	1,575	4,044	846	1,158	1,321	1,607	4,086	1%
<b>Total</b>	<b>55,895</b>	<b>9,927</b>	<b>7,487</b>	<b>30,878</b>	<b>48,292</b>	<b>7,603</b>	<b>9,913</b>	<b>7,198</b>	<b>33,492</b>	<b>50,603</b>	<b>5%</b>

Table 8: Foreign Student Flows by Country of Origin

Country of Last Permanent Residence	2004							2005					Difference YTD 2005 / YTD 2004
	Total	Q1	Q2	Q3	YTD	Q4	YTD Rank	Q1	Q2	Q3	YTD	YTD Rank	
South Korea	12,293	3,764	2,186	4,377	10,327	1,966	1	3,468	2,041	4,959	10,468	1	1%
China, People's Republic of	6,848	1,015	972	3,586	5,573	1,275	2	1,133	856	3,952	5,941	2	7%
Japan	5,017	1,095	1,712	1,750	4,557	460	3	1,051	1,555	1,664	4,270	3	-6%
United States	3,892	322	305	2,945	3,572	320	4	269	274	2,872	3,415	4	-4%
France	3,465	262	125	2,852	3,239	226	5	265	86	3,021	3,372	5	4%
Mexico	2,088	198	125	1,645	1,968	120	6	221	117	1,825	2,163	6	10%
Germany	1,750	82	36	1,554	1,672	78	7	127	41	1,642	1,810	7	8%
India	1,332	210	109	646	965	367	11	396	223	1,100	1,719	8	78%
Taiwan	1,748	303	302	921	1,526	222	8	248	309	938	1,495	9	-2%
United Kingdom	1,209	115	138	778	1,031	178	9	138	131	825	1,094	10	6%
<b>Total - 2005 YTD Top Ten Only</b>	<b>39,642</b>	<b>7,366</b>	<b>6,010</b>	<b>21,054</b>	<b>34,430</b>	<b>5,212</b>		<b>7,316</b>	<b>5,633</b>	<b>22,798</b>	<b>35,747</b>		<b>4%</b>
<b>Total - Other Countries</b>	<b>16,253</b>	<b>2,561</b>	<b>1,477</b>	<b>9,824</b>	<b>13,862</b>	<b>2,391</b>		<b>2,597</b>	<b>1,565</b>	<b>10,694</b>	<b>14,856</b>		<b>7%</b>
<b>Total</b>	<b>55,895</b>	<b>9,927</b>	<b>7,487</b>	<b>30,878</b>	<b>48,292</b>	<b>7,603</b>		<b>9,913</b>	<b>7,198</b>	<b>33,492</b>	<b>50,603</b>		<b>5%</b>

Table 9: Foreign Student Flows by Destination

Province	2004						2005				Difference YTD 2005 / YTD 2004
	Total	Q1	Q2	Q3	YTD	Q4	Q1	Q2	Q3	YTD	
<b>Census Metropolitan Area</b>											
<b>Total Newfoundland and Labrador</b>	<b>268</b>	<b>29</b>	<b>20</b>	<b>192</b>	<b>241</b>	<b>27</b>	<b>58</b>	<b>29</b>	<b>242</b>	<b>329</b>	<b>37%</b>
<b>Total Prince Edward Island</b>	<b>109</b>	<b>14</b>	<b>9</b>	<b>72</b>	<b>95</b>	<b>14</b>	<b>19</b>	<b>10</b>	<b>78</b>	<b>107</b>	<b>13%</b>
Halifax	1,244	194	136	776	1,106	138	177	135	740	1,052	-5%
Other Nova Scotia	485	49	25	387	461	24	46	20	457	523	13%
<b>Total Nova Scotia</b>	<b>1,729</b>	<b>243</b>	<b>161</b>	<b>1,163</b>	<b>1,567</b>	<b>162</b>	<b>223</b>	<b>155</b>	<b>1,197</b>	<b>1,575</b>	<b>1%</b>
Saint John	142	12	15	105	132	10	15	16	86	117	-11%
Other New Brunswick	664	85	44	443	572	92	61	30	513	604	6%
<b>Total New Brunswick</b>	<b>806</b>	<b>97</b>	<b>59</b>	<b>548</b>	<b>704</b>	<b>102</b>	<b>76</b>	<b>46</b>	<b>599</b>	<b>721</b>	<b>2%</b>
Québec	851	129	37	598	764	87	116	33	591	740	-3%
Montréal	7,200	848	501	5,075	6,424	776	815	314	4,782	5,911	-8%
Other Quebec	1,308	153	104	905	1,162	146	140	49	1,159	1,348	16%
<b>Total Quebec</b>	<b>9,359</b>	<b>1,130</b>	<b>642</b>	<b>6,578</b>	<b>8,350</b>	<b>1,009</b>	<b>1,071</b>	<b>396</b>	<b>6,532</b>	<b>7,999</b>	<b>-4%</b>
Ottawa	1,698	256	200	1,023	1,479	219	255	206	1,049	1,510	2%
Toronto	10,670	2,124	1,695	5,081	8,900	1,770	2,217	1,817	5,576	9,610	8%
Hamilton	1,115	218	108	564	890	225	197	114	609	920	3%
London	763	121	66	493	680	83	108	77	556	741	9%
Other Ontario	4,459	593	385	3,004	3,982	477	624	404	3,516	4,544	14%
<b>Total Ontario</b>	<b>18,705</b>	<b>3,312</b>	<b>2,454</b>	<b>10,165</b>	<b>15,931</b>	<b>2,774</b>	<b>3,401</b>	<b>2,618</b>	<b>11,306</b>	<b>17,325</b>	<b>9%</b>
Winnipeg	1,127	192	150	662	1,004	123	202	128	630	960	-4%
Other Manitoba	263	33	29	178	240	23	34	23	168	225	-6%
<b>Total Manitoba</b>	<b>1,390</b>	<b>225</b>	<b>179</b>	<b>840</b>	<b>1,244</b>	<b>146</b>	<b>236</b>	<b>151</b>	<b>798</b>	<b>1,185</b>	<b>-5%</b>
Regina	415	55	97	219	371	44	127	40	255	422	14%
Saskatoon	369	54	37	229	320	49	75	49	244	368	15%
Other Saskatchewan	230	21	18	164	203	27	29	12	168	209	3%
<b>Total Saskatchewan</b>	<b>1,014</b>	<b>130</b>	<b>152</b>	<b>612</b>	<b>894</b>	<b>120</b>	<b>231</b>	<b>101</b>	<b>667</b>	<b>999</b>	<b>12%</b>
Calgary	1,974	428	286	959	1,673	301	398	331	1,067	1,796	7%
Edmonton	1,331	204	176	770	1,150	181	216	192	810	1,218	6%
Other Alberta	807	149	115	446	710	97	160	116	534	810	14%
<b>Total Alberta</b>	<b>4,112</b>	<b>781</b>	<b>577</b>	<b>2,175</b>	<b>3,533</b>	<b>579</b>	<b>774</b>	<b>639</b>	<b>2,411</b>	<b>3,824</b>	<b>8%</b>
Vancouver	13,639	3,158	2,440	6,039	11,637	2,002	2,842	2,293	6,804	11,939	3%
Victoria	657	92	92	429	613	44	84	74	408	566	-8%
Other British Columbia	4,056	704	699	2,035	3,438	618	892	684	2,422	3,998	16%
<b>Total British Columbia</b>	<b>18,352</b>	<b>3,954</b>	<b>3,231</b>	<b>8,503</b>	<b>15,688</b>	<b>2,664</b>	<b>3,818</b>	<b>3,051</b>	<b>9,634</b>	<b>16,503</b>	<b>5%</b>
<b>Total Territories</b>	<b>34</b>	<b>3</b>	<b>2</b>	<b>24</b>	<b>29</b>	<b>5</b>	<b>5</b>	<b>2</b>	<b>28</b>	<b>35</b>	<b>21%</b>
Not Stated	17	9	1	6	16	1	1	-	-	1	-94%
<b>Total</b>	<b>55,895</b>	<b>9,927</b>	<b>7,487</b>	<b>30,878</b>	<b>48,292</b>	<b>7,603</b>	<b>9,913</b>	<b>7,198</b>	<b>33,492</b>	<b>50,603</b>	<b>5%</b>

Note: Destination coding is often amended after a record is entered in the administrative system. As a result, the number of people destined for a census metropolitan area is understated for the current quarter.