

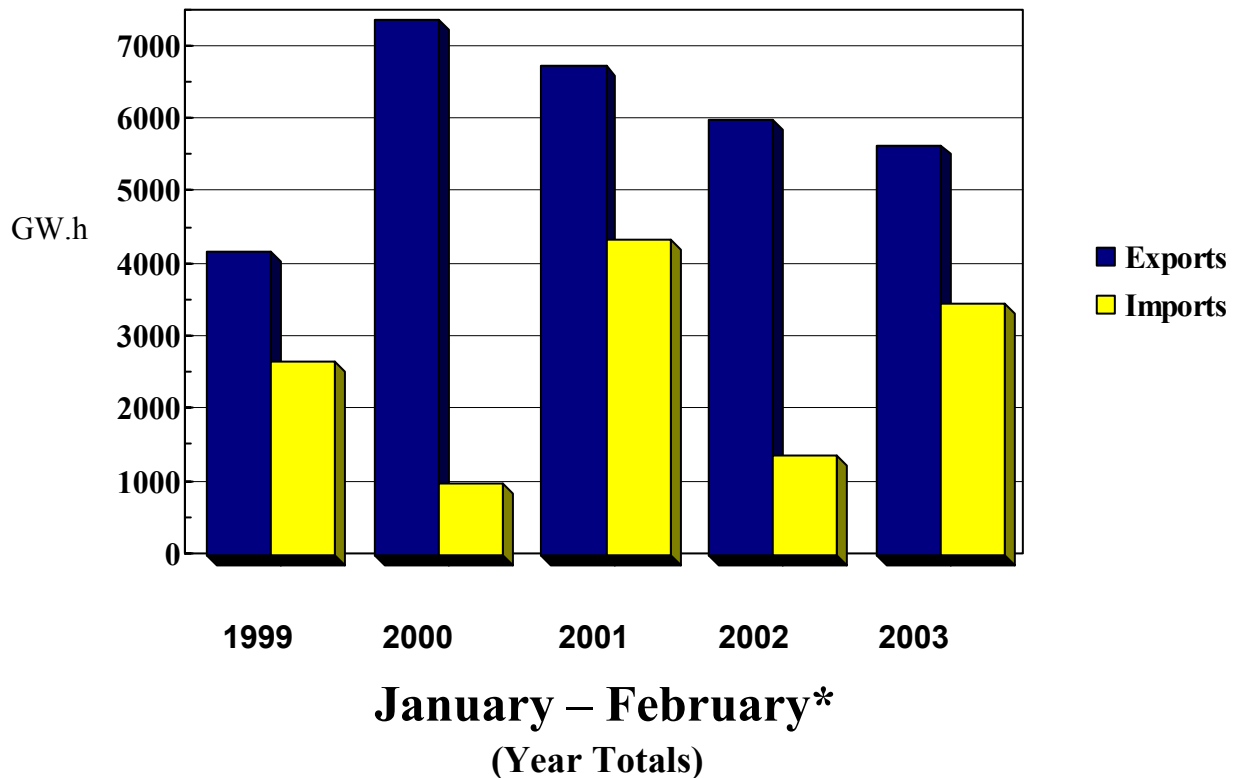


# Electricity Exports and Imports

## Monthly Statistics for February 2003 [Revised 16 March 2004]\*

Exports: 2650 GW.h

Imports: 1757 GW.h





National Energy Board  
Office national de l'énergie

# TABLE 1

## Exports and Imports of Electricity

### Summary: Canada

#### FEBRUARY 2003

Page 1  
04/03/12

	Exchange Type	Energy (MW.h)		Revenue (CAN\$) <sup>1</sup>		CAN\$/MW.h <sup>2</sup>	
		FEB03	JAN03 - FEB03	FEB03	JAN03 - FEB03	FEB03	L12M
<b>Exports of Electric Energy</b>	Firm	945 616	2 065 285	69 587 189	143 442 383	63.38	52.72
	Interruptible	1 704 024	3 587 526	133 140 309	261 708 514	77.63	48.94
	Non-Revenue/Inadvertant	- 327 212	- 768 875	0	0	0.00	0.00
	Service	82 583	126 122	36 031	379 049	0.44	4.03
<b>Total Exports</b>		<b>2 405 011</b>	<b>5 010 058</b>	<b>202 763 529</b>	<b>405 529 946</b>	<b>79.93</b>	<b>51.74</b>
Total Sales - Firm and Interruptible		2 649 640	5 652 811	202 727 498	405 150 897	72.54	49.92
<b>Imports of Electric Energy</b>	Non-Revenue/Inadvertant	- 378 108	- 897 587	0	0	0.00	0.00
	Purchase	1 756 920	3 456 605	129 878 297	223 288 042	73.92	55.12
	Service	82 583	126 122	78 388	106 853	0.95	0.40
<b>Total Imports</b>		<b>1 461 396</b>	<b>2 685 140</b>	<b>129 956 685</b>	<b>223 394 896</b>	<b>88.93</b>	<b>62.54</b>
<b>Excess of Exports Over Imports</b>		<b>943 615</b>	<b>2 324 918</b>	<b>72 806 844</b>	<b>182 135 051</b>		
<b>Number of Export Licences:</b>		<b>9</b>					
<b>Number of Export Permits/Orders:</b>		<b>155</b>					
		<b>164</b>					

Footnotes:

1. Includes capacity and energy charges.
2. Average value for the month and the last 12 months (excludes capacity charge).

*For further information, contact:*

*Mary-Jane Sam  
Statistical Research Officer,  
Commodities Business Unit Agente  
National Energy Board  
(403) 299-3706*



## TABLE 2A Export Summary Report by Source, Authorization and Exchange Type

Source	Authorization	Exchange Type	Energy (MW.h)		Revenue (CAN\$) <sup>1</sup>		CAN\$/MW.h <sup>2</sup>	
			FEB03	JAN03 - FEB03	FEB03	JAN03 - FEB03	FEB03	L12M
<b>Alberta</b>								
Enmax Marketing	Permit 169	I	3 521	7 271	238 568	399 894	67.76	40.93
EPCOR Merchant	Permit 186	I	3 231	3 231	204 986	204 986	63.44	63.44
TransCanada	Permit 78	I	2 334	3 564	170 601	224 078	73.09	49.22
<b>Subtotal Firm and Interruptible Exports: Alberta</b>			<b>9 086</b>	<b>14 066</b>	<b>614 155</b>	<b>828 959</b>	<b>67.59</b>	<b>44.37</b>
<b>British Columbia</b>								
BC Hydro	Permit 105	F	106	221	7 576	15 839	71.47	280.13
	Permit 127	N	- 339 281	- 715 624	0	0	0.00	0.00
		S	80 538	118 904	0	0	0.00	0.00
	Permit 192	N	41 042	89 033	0	0	0.00	0.00
	Treaty	N	48 089	94 944	0	0	0.00	0.00
Powerex Corp.	Permit 118	I	462 678	963 907	30 201 285	56 332 330	65.27	39.29
Teck Cominco	Permit 132	F	66 885	145 469	4 221 276	8 672 837	63.11	43.62
TransAlta Ener	Permit 168	F	6 354	11 464	379 505	558 705	59.73	41.08
<b>Subtotal Firm and Interruptible Exports: British Columbia</b>			<b>536 023</b>	<b>1 121 061</b>	<b>34 809 642</b>	<b>65 579 711</b>	<b>64.94</b>	<b>39.80</b>

Footnotes:

1. Includes capacity and energy charges.
2. Average value for the month and the last 12 months (excludes capacity charge).

- F - Firm Sales
- I - Interruptible Sales
- P - Purchase (Import)
- N - Non-Revenue (Non-Revenue or Inadvertent)
- S - Service (Spinning Reserve, Storage, Unit Rental, Transmission, etc.)



## TABLE 2A

### Export Summary Report

#### by Source, Authorization and Exchange Type

Source	Authorization	Exchange Type	Energy (MW.h)		Revenue (CAN\$) <sup>1</sup>		CAN\$/MW.h <sup>2</sup>	
			FEB03	JAN03 - FEB03	FEB03	JAN03 - FEB03	FEB03	L12M
<b>Manitoba</b>								
Manitoba Hydro	Licence 170	F	248 950	536 700	13 190 618	27 791 474	52.99	49.70
	Permit 35	F	0	0	0	7 319	0.00	32.52
	Permit 45	F	15 750	33 350	1 318 686	2 779 187	83.73	82.72
	Permit 46	I	81 935	189 794	4 533 700	10 023 876	55.33	45.83
		N	25 637	42 547	0	0	0.00	0.00
	Permit 68	F	18 381	40 695	680 353	1 437 815	37.01	39.86
	Permit 128	F	902	1 780	40 842	80 765	45.28	52.09
	Permit 144	F	16 430	34 830	1 550 282	3 311 990	94.36	96.13
	Permit 155	F	17 460	39 395	1 253 867	2 760 715	71.81	70.45
	Permit 207	F	32 000	68 800	2 515 578	5 358 173	78.61	78.95
Powerex Corp.	Permit 116	I	10	10	0	0	0.00	0.00
<b>Subtotal Firm and Interruptible Exports: Manitoba</b>			<b>431 818</b>	<b>945 354</b>	<b>25 083 927</b>	<b>53 551 313</b>	<b>58.09</b>	<b>53.17</b>
<b>New Brunswick</b>								
Fraser Inc.	Permit 225	F	23 760	46 905	1 683 426	3 400 573	70.85	72.50
NB Power	Permit 47	F	7 126	14 948	415 834	891 922	58.35	61.34
	Permit 90	F	30 479	61 415	1 819 993	3 753 998	59.71	63.52
	Permit 91	I	48 745	132 110	4 217 283	11 535 341	78.98	63.97

Footnotes:

1. Includes capacity and energy charges.
2. Average value for the month and the last 12 months (excludes capacity charge).

- F - Firm Sales
- I - Interruptible Sales
- P - Purchase (Import)
- N - Non-Revenue (Non-Revenue or Inadvertent)
- S - Service (Spinning Reserve, Storage, Unit Rental, Transmission, etc.)



## TABLE 2A

### Export Summary Report

#### by Source, Authorization and Exchange Type

Source	Authorization	Exchange Type	Energy (MW.h)		Revenue (CAN\$) <sup>1</sup>		CAN\$/MW.h <sup>2</sup>	
			FEB03	JAN03 - FEB03	FEB03	JAN03 - FEB03	FEB03	L12M
WPS Power Dev.	Licence 177	F	- 790	- 546	-10 044	-6 939	12.72	12.72
<b>Subtotal Firm and Interruptible Exports: New Brunswick</b>			<b>109 320</b>	<b>254 832</b>	<b>8 126 492</b>	<b>19 574 895</b>	<b>70.98</b>	<b>61.83</b>
<b>Ontario</b>								
Cargill Canada	Permit 204	F	7 701	7 801	711 795	717 239	92.43	73.17
Conectiv Energy	Permit 212	I	7 871	62 733	701 721	4 110 588	89.15	52.95
Coral Energy	Permit 174	F	75 058	107 549	5 347 776	7 722 278	71.25	66.48
D&W Subway	Permit 26	F	149	959	0	0	0.00	0.00
DTE Energy Trad	Permit 206	F	120 633	248 788	9 680 776	16 586 884	80.25	58.16
EPCOR Merchant	Permit 187	F	5 300	8 285	367 910	581 385	69.42	69.75
Ind Elc Mark Op	Permit 22	N	- 102 699	- 279 775	0	0	0.00	0.00
Ont Power Gen	Permit 24	F	25	52	49	104	2.00	2.00
OPGI/OHIM	Permit 21	I	58 886	183 964	3 055 741	9 146 449	44.13	39.89
		S	2 045	7 218	36 031	379 049	17.62	34.93
PG&E Ener. Trad	Permit 146	F	0	2 190	0	107 778	0.00	42.44

Footnotes:

1. Includes capacity and energy charges.
2. Average value for the month and the last 12 months (excludes capacity charge).

- F - Firm Sales
- I - Interruptible Sales
- P - Purchase (Import)
- N - Non-Revenue (Non-Revenue or Inadvertent)
- S - Service (Spinning Reserve, Storage, Unit Rental, Transmission, etc.)



## TABLE 2A Export Summary Report by Source, Authorization and Exchange Type

Source	Authorization	Exchange Type	Energy (MW.h)		Revenue (CAN\$) <sup>1</sup>		CAN\$/MW.h <sup>2</sup>	
			FEB03	JAN03 - FEB03	FEB03	JAN03 - FEB03	FEB03	L12M
Sempra Corp	Permit 157	F	5 907	14 442	447 183	847 055	75.70	53.95
SPLIT ROCK	Permit 221	F	29 268	81 129	2 618 643	6 082 691	89.47	53.16
<b>Subtotal Firm and Interruptible Exports: Ontario</b>			<b>310 798</b>	<b>717 892</b>	<b>22 931 594</b>	<b>45 902 452</b>	<b>72.31</b>	<b>46.84</b>
<b>Quebec</b>								
Brascan	Permit 112	F	43 063	206 625	4 587 244	16 041 959	106.52	75.85
Hydro-Quebec	Licence 180	F	99 191	199 813	9 532 266	19 304 043	40.64	41.64
	Licence 181	F	15 712	32 330	1 520 030	3 106 319	40.64	41.87
	Licence 182	F	14 844	30 200	1 396 604	2 840 818	40.64	41.87
	Licence 183	F	28 111	55 194	2 617 970	5 242 880	40.64	41.85
	Licence 184	F	16 861	34 502	1 691 151	3 446 579	40.64	41.87
	Permit 64	I	914 491	1 728 230	82 004 840	149 727 352	89.63	53.64
MEHQ	Permit 129	I	70 790	220 835	3 458 878	12 520 936	48.86	53.95
<b>Subtotal Firm and Interruptible Exports: Quebec</b>			<b>1 203 063</b>	<b>2 507 729</b>	<b>106 808 982</b>	<b>212 230 884</b>	<b>80.72</b>	<b>52.61</b>
<b>Saskatchewan</b>								
Northpoint	Permit 88	I	49 097	91 440	4 324 124	7 453 898	88.07	58.71

Footnotes:

1. Includes capacity and energy charges.
2. Average value for the month and the last 12 months (excludes capacity charge).

- F - Firm Sales
- I - Interruptible Sales
- P - Purchase (Import)
- N - Non-Revenue (Non-Revenue or Inadvertent)
- S - Service (Spinning Reserve, Storage, Unit Rental, Transmission, etc.)



National Energy Board  
Office national de l'énergie

## TABLE 2A

### Export Summary Report

#### by Source, Authorization and Exchange Type

Page 5  
04/03/15

Source	Authorization	Exchange Type	Energy (MW.h)		Revenue (CAN\$) <sup>1</sup>		CAN\$/MW.h <sup>2</sup>	
			FEB03	JAN03 - FEB03	FEB03	JAN03 - FEB03	FEB03	L12M
Powerex Corp.	Permit 116	I	435	437	28 582	28 785	65.71	65.87
<b>Subtotal Firm and Interruptible Exports: Saskatchewan</b>			<b>49 532</b>	<b>91 877</b>	<b>4 352 706</b>	<b>7 482 683</b>	<b>87.88</b>	<b>58.73</b>
<b>Total Firm and Interruptible Exports:</b>			<b>2 649 640</b>	<b>5 652 811</b>	<b>202 727 498</b>	<b>405 150 897</b>	<b>72.54</b>	<b>49.92</b>

Footnotes:

1. Includes capacity and energy charges.
2. Average value for the month and the last 12 months (excludes capacity charge).

- F - Firm Sales
- I - Interruptible Sales
- P - Purchase (Import)
- N - Non-Revenue (Non-Revenue or Inadvertent)
- S - Service (Spinning Reserve, Storage, Unit Rental, Transmission, etc.)



## TABLE 2B Import Summary Report by Destination, Authorization and Exchange Type

Destination	Authorization	Exchange Type	Energy (MW.h)		Revenue (CAN\$) <sup>1</sup>		CAN\$/MW.h <sup>2</sup>	
			FEB03	JAN03 - FEB03	FEB03	JAN03 - FEB03	FEB03	L12M
<b>Alberta</b>								
Coral Energy	-	P	745	2 905	65 710	206 088	88.20	70.94
Enmax Marketing		P	7 975	38 865	574 177	2 510 110	72.00	47.58
EPCOR Merchant		P	1 961	2 056	194 930	201 246	99.40	43.81
TransCanada		P	1 060	9 204	78 219	609 117	73.79	44.25
<b>Subtotal Purchased Imports: Alberta</b>			<b>11 741</b>	<b>53 030</b>	<b>913 036</b>	<b>3 526 561</b>	<b>77.76</b>	<b>46.38</b>
<b>British Columbia</b>								
Aquila Networks		P	297	617	44 400	65 800	149.49	87.93
BC Hydro		N	- 289 318	- 646 698	0	0	0.00	0.00
		S	80 538	118 904	0	0	0.00	0.00
Powerex Corp.		P	259 297	586 499	12 988 400	26 300 273	50.09	34.43
Teck Cominco		P	15 964	30 304	1 002 216	1 797 078	62.78	33.38
TransAlta Ener		P	1 403	7 979	93 616	450 570	66.73	35.58
<b>Subtotal Purchased Imports: British Columbia</b>			<b>276 961</b>	<b>625 399</b>	<b>14 128 632</b>	<b>28 613 721</b>	<b>51.01</b>	<b>34.37</b>

Footnotes:

1. Includes capacity and energy charges.
2. Average value for the month and the last 12 months (excludes capacity charge).

- F - Firm Sales
- I - Interruptible Sales
- P - Purchase (Import)
- N - Non-Revenue (Non-Revenue or Inadvertent)
- S - Service (Spinning Reserve, Storage, Unit Rental, Transmission, etc.)





## TABLE 2B Import Summary Report by Destination, Authorization and Exchange Type

Destination	Authorization	Exchange Type	Energy (MW.h)		Revenue (CAN\$) <sup>1</sup>		CAN\$/MW.h <sup>2</sup>	
			FEB03	JAN03 - FEB03	FEB03	JAN03 - FEB03	FEB03	L12M
<b>Manitoba</b>								
Manitoba Hydro	-	P	496 107	895 296	26 064 681	42 405 082	52.54	37.61
<b>Subtotal Purchased Imports: Manitoba</b>			<b>496 107</b>	<b>895 296</b>	<b>26 064 681</b>	<b>42 405 082</b>	<b>52.54</b>	<b>37.61</b>
<b>New Brunswick</b>								
NB Power		P	9 170	9 235	1 417 241	1 420 720	154.55	153.84
WPS Power Dev.		P	0	3	0	39	0.00	12.72
<b>Subtotal Purchased Imports: New Brunswick</b>			<b>9 170</b>	<b>9 238</b>	<b>1 417 241</b>	<b>1 420 759</b>	<b>154.55</b>	<b>144.61</b>
<b>Ontario</b>								
Cargill Canada		P	81 433	134 154	7 578 846	10 388 082	93.07	61.89
Conectiv Energy		P	81 860	177 705	8 178 069	14 542 787	99.90	75.20
Constellation		P	29 458	36 088	4 103 310	4 476 893	139.29	91.78
Coral Energy		P	10 487	12 818	1 196 424	1 463 658	114.09	105.87
D&W Subway		P	149	278	0	0	0.00	0.00

Footnotes:

1. Includes capacity and energy charges.
2. Average value for the month and the last 12 months (excludes capacity charge).

- F - Firm Sales
- I - Interruptible Sales
- P - Purchase (Import)
- N - Non-Revenue (Non-Revenue or Inadvertent)
- S - Service (Spinning Reserve, Storage, Unit Rental, Transmission, etc.)



## TABLE 2B

### Import Summary Report

#### by Destination, Authorization and Exchange Type

Destination	Authorization	Exchange Type	Energy (MW.h)		Revenue (CAN\$) <sup>1</sup>		CAN\$/MW.h <sup>2</sup>	
			FEB03	JAN03 - FEB03	FEB03	JAN03 - FEB03	FEB03	L12M
DTE Energy Trad	-	P	278 366	475 899	25 110 915	35 966 901	90.21	69.60
Dynegy		P	54 838	102 559	5 869 478	9 584 879	107.03	76.86
EPCOR Merchant		P	1 312	1 567	257 147	286 006	196.00	140.46
Ind Ele Mark Op		N	-88 790	- 250 889	0	0	0.00	0.00
Morgan Stanley		P	6 075	7 218	776 083	979 661	127.75	126.53
OPGI/OHIM		P	32 364	39 510	3 101 206	3 594 220	95.82	57.13
		S	2 045	7 218	78 388	106 853	38.33	3.85
PG&E Ener. Trad		P	0	45 489	0	3 628 044	0.00	82.13
Powerex Corp.		P	8 919	14 279	589 352	895 709	66.08	46.15
Sempra Corp		P	421	521	12 099	14 886	28.74	28.57
SPLIT ROCK		P	126 071	269 885	10 857 761	20 909 066	86.12	74.47
TransAlta Ener		P	0	1 488	0	150 502	0.00	101.14
TransCanada PM		P	200	481	21 038	161 539	105.19	235.00
<b>Subtotal Purchased Imports: Ontario</b>			<b>711 953</b>	<b>1 319 939</b>	<b>67 651 728</b>	<b>107 042 833</b>	<b>95.02</b>	<b>71.60</b>

Footnotes:

1. Includes capacity and energy charges.
2. Average value for the month and the last 12 months (excludes capacity charge).

- F - Firm Sales
- I - Interruptible Sales
- P - Purchase (Import)
- N - Non-Revenue (Non-Revenue or Inadvertent)
- S - Service (Spinning Reserve, Storage, Unit Rental, Transmission, etc.)



## TABLE 2B Import Summary Report by Destination, Authorization and Exchange Type

Destination	Authorization	Exchange Type	Energy (MW.h)		Revenue (CAN\$) <sup>1</sup>		CAN\$/MW.h <sup>2</sup>	
			FEB03	JAN03 - FEB03	FEB03	JAN03 - FEB03	FEB03	L12M
<b>Quebec</b>								
Brascan	-	P	51 199	131 613	5 175 337	10 982 226	101.08	78.73
Hydro-Quebec		P	96 609	239 845	6 862 980	17 598 467	71.04	45.74
MEHQ		P	33 902	34 427	3 843 533	4 058 676	113.37	172.40
<b>Subtotal Purchased Imports: Quebec</b>			<b>181 710</b>	<b>405 885</b>	<b>15 881 850</b>	<b>32 639 370</b>	<b>87.40</b>	<b>58.65</b>
<b>Saskatchewan</b>								
Northpoint		P	69 278	147 818	3 821 129	7 639 716	55.16	36.00
<b>Subtotal Purchased Imports: Saskatchewan</b>			<b>69 278</b>	<b>147 818</b>	<b>3 821 129</b>	<b>7 639 716</b>	<b>55.16</b>	<b>36.00</b>
<b>Total Purchased Imports:</b>			<b>1 756 920</b>	<b>3 456 605</b>	<b>129 878 297</b>	<b>223 288 042</b>	<b>73.92</b>	<b>55.12</b>

Footnotes:

1. Includes capacity and energy charges.
2. Average value for the month and the last 12 months (excludes capacity charge).

- F - Firm Sales
- I - Interruptible Sales
- P - Purchase (Import)
- N - Non-Revenue (Non-Revenue or Inadvertent)
- S - Service (Spinning Reserve, Storage, Unit Rental, Transmission, etc.)



National Energy Board  
Office national de l'énergie

## TABLE 3A

### Export Sales Summary Report by Destination and Source

Page 1  
04/03/12

Destination	Source	Energy (MW.h)		Revenue (CAN\$) <sup>1</sup>		CAN\$/MW.h <sup>2</sup>	
		FEB03	JAN03 - FEB03	FEB03	JAN03 - FEB03	FEB03	L12M
<b>Alaska</b>	British Columbia	106	221	7 576	15 839	71.47	280.13
<b>Subtotal Exports: Alaska</b>		<b>106</b>	<b>221</b>	<b>7 576</b>	<b>15 839</b>	<b>71.47</b>	<b>280.13</b>
<b>Arizona</b>	British Columbia	196	424	19 646	39 063	100.24	50.21
<b>Subtotal Exports: Arizona</b>		<b>196</b>	<b>424</b>	<b>19 646</b>	<b>39 063</b>	<b>100.24</b>	<b>50.21</b>
<b>California</b>	British Columbia	9 759	21 191	632 532	1 228 482	64.82	35.28
<b>Subtotal Exports: California</b>		<b>9 759</b>	<b>21 191</b>	<b>632 532</b>	<b>1 228 482</b>	<b>64.82</b>	<b>35.28</b>
<b>Colorado</b>	British Columbia	175	300	32 517	44 074	185.81	146.91
<b>Subtotal Exports: Colorado</b>		<b>175</b>	<b>300</b>	<b>32 517</b>	<b>44 074</b>	<b>185.81</b>	<b>146.91</b>
<b>Idaho</b>	British Columbia	0	9	0	444	0.00	49.31
<b>Subtotal Exports: Idaho</b>		<b>0</b>	<b>9</b>	<b>0</b>	<b>444</b>	<b>0.00</b>	<b>49.31</b>
<b>Maine</b>	New Brunswick	109 320	254 832	8 126 492	19 574 895	74.34	61.83
	Quebec	70 790	220 835	3 458 878	12 520 936	48.86	53.95
<b>Subtotal Exports: Maine</b>		<b>180 110</b>	<b>475 667</b>	<b>11 585 370</b>	<b>32 095 831</b>	<b>64.32</b>	<b>59.06</b>
<b>Massachusetts</b>	Quebec	35 158	43 940	3 657 714	4 577 824	104.04	94.39
<b>Subtotal Exports: Massachusetts</b>		<b>35 158</b>	<b>43 940</b>	<b>3 657 714</b>	<b>4 577 824</b>	<b>104.04</b>	<b>94.39</b>
<b>Michigan</b>	Ontario	120 782	252 427	9 680 776	16 730 120	80.15	57.76
<b>Subtotal Exports: Michigan</b>		<b>120 782</b>	<b>252 427</b>	<b>9 680 776</b>	<b>16 730 120</b>	<b>80.15</b>	<b>57.76</b>
<b>Minnesota</b>	Ontario	890	2 010	76 362	124 634	85.80	54.50
<b>Subtotal Exports: Minnesota</b>		<b>890</b>	<b>2 010</b>	<b>76 362</b>	<b>124 634</b>	<b>85.80</b>	<b>54.50</b>
<b>Montana</b>	British Columbia	205	432	17 067	32 169	83.26	25.95
<b>Subtotal Exports: Montana</b>		<b>205</b>	<b>432</b>	<b>17 067</b>	<b>32 169</b>	<b>83.26</b>	<b>25.95</b>

Footnotes:

1. Includes capacity and energy charges.
2. Average value for the month and the last 12 months (excludes capacity charge).



## TABLE 3A

### Export Sales Summary Report by Destination and Source

Destination	Source	Energy (MW.h)		Revenue (CAN\$) <sup>1</sup>		CAN\$/MW.h <sup>2</sup>	
		FEB03	JAN03 - FEB03	FEB03	JAN03 - FEB03	FEB03	L12M
<b>ND/Minn</b>	Manitoba	431 808	945 344	25 083 927	53 551 313	58.09	53.17
<b>Subtotal Exports: ND/Minn</b>		<b>431 808</b>	<b>945 344</b>	<b>25 083 927</b>	<b>53 551 313</b>	<b>58.09</b>	<b>53.17</b>
<b>Nevada</b>	British Columbia	225	225	20 346	20 346	90.43	68.61
<b>Subtotal Exports: Nevada</b>		<b>225</b>	<b>225</b>	<b>20 346</b>	<b>20 346</b>	<b>90.43</b>	<b>68.61</b>
<b>New Mexico</b>	British Columbia	3 589	5 475	316 299	477 321	88.13	71.92
<b>Subtotal Exports: New Mexico</b>		<b>3 589</b>	<b>5 475</b>	<b>316 299</b>	<b>477 321</b>	<b>88.13</b>	<b>71.92</b>
<b>New York</b>	Ontario	189 126	463 455	13 174 456	29 047 698	69.66	44.43
	Quebec	918 499	1 881 980	82 476 662	160 220 022	89.80	53.93
<b>Subtotal Exports: New York</b>		<b>1 107 625</b>	<b>2 345 435</b>	<b>95 651 118</b>	<b>189 267 720</b>	<b>86.36</b>	<b>52.36</b>
<b>North Dakota</b>	Saskatchewan	49 097	91 440	4 324 124	7 453 898	88.07	58.71
<b>Subtotal Exports: North Dakota</b>		<b>49 097</b>	<b>91 440</b>	<b>4 324 124</b>	<b>7 453 898</b>	<b>88.07</b>	<b>58.71</b>
<b>Oregon</b>	Alberta	0	360	0	15 428	0.00	40.47
	British Columbia	64 783	175 514	4 609 041	10 830 047	71.15	45.13
<b>Subtotal Exports: Oregon</b>		<b>64 783</b>	<b>175 874</b>	<b>4 609 041</b>	<b>10 845 475</b>	<b>71.15</b>	<b>45.12</b>
<b>Pennsylvania</b>	Saskatchewan	429	429	28 582	28 582	66.62	66.62
<b>Subtotal Exports: Pennsylvania</b>		<b>429</b>	<b>429</b>	<b>28 582</b>	<b>28 582</b>	<b>66.62</b>	<b>66.62</b>
<b>Utah</b>	British Columbia	3 719	3 719	434 962	434 962	116.96	110.23
<b>Subtotal Exports: Utah</b>		<b>3 719</b>	<b>3 719</b>	<b>434 962</b>	<b>434 962</b>	<b>116.96</b>	<b>110.23</b>
<b>Vermont</b>	Quebec	178 616	360 974	17 215 728	34 912 103	96.38	42.77
<b>Subtotal Exports: Vermont</b>		<b>178 616</b>	<b>360 974</b>	<b>17 215 728</b>	<b>34 912 103</b>	<b>96.38</b>	<b>42.77</b>

Footnotes:

1. Includes capacity and energy charges.
2. Average value for the month and the last 12 months (excludes capacity charge).



National Energy Board  
Office national de l'énergie

## TABLE 3A

### Export Sales Summary Report by Destination and Source

Page 3  
04/03/12

Destination	Source	Energy (MW.h)		Revenue (CAN\$) <sup>1</sup>		CAN\$/MW.h <sup>2</sup>	
		FEB03	JAN03 - FEB03	FEB03	JAN03 - FEB03	FEB03	L12M
<b>Virginia</b>	Manitoba	10	10	0	0	0.00	0.00
	Saskatchewan	6	6	0	0	0.00	0.00
<b>Subtotal Exports: Virginia</b>		<b>16</b>	<b>16</b>	<b>0</b>	<b>0</b>	<b>0.00</b>	<b>0.00</b>
<b>Washington</b>	Alberta	9 086	13 706	614 155	813 531	67.59	44.41
	British Columbia	446 970	901 935	28 063 735	51 256 892	62.79	39.07
<b>Subtotal Exports: Washington</b>		<b>456 056</b>	<b>915 641</b>	<b>28 677 889</b>	<b>52 070 422</b>	<b>62.88</b>	<b>39.13</b>
<b>Wisconsin</b>	Saskatchewan	0	2	0	203	0.00	101.71
<b>Subtotal Exports: Wisconsin</b>		<b>0</b>	<b>2</b>	<b>0</b>	<b>203</b>	<b>0.00</b>	<b>101.71</b>
<b>Wyoming</b>	British Columbia	6 296	11 616	655 922	1 200 072	104.18	82.40
<b>Subtotal Exports: Wyoming</b>		<b>6 296</b>	<b>11 616</b>	<b>655 922</b>	<b>1 200 072</b>	<b>104.18</b>	<b>82.40</b>
<b>Total Exports</b>		<b>2 649 640</b>	<b>5 652 811</b>	<b>202 727 498</b>	<b>405 150 897</b>	<b>76.51</b>	<b>49.92</b>

Footnotes:  
 1. Includes capacity and energy charges.  
 2. Average value for the month and the last 12 months (excludes capacity charge).



National Energy Board  
Office national de l'énergie

## TABLE 3B

### Import Purchases Summary Report by Source and Destination

Page 4  
04/03/12

Source	Destination	Energy (MW.h)		Revenue (CAN\$) <sup>1</sup>		CAN\$/MW.h <sup>2</sup>	
		FEB03	JAN03 - FEB03	FEB03	JAN03 - FEB03	FEB03	L12M
<b>Illinois</b>	Ontario	54 838	102 559	5 869 478	9 584 879	107.03	76.86
<b>Subtotal Imports: Illinois</b>		<b>54 838</b>	<b>102 559</b>	<b>5 869 478</b>	<b>9 584 879</b>	<b>107.03</b>	<b>76.86</b>
<b>Iowa</b>	Ontario	0	54	0	1 885	0.00	34.91
<b>Subtotal Imports: Iowa</b>		<b>0</b>	<b>54</b>	<b>0</b>	<b>1 885</b>	<b>0.00</b>	<b>34.91</b>
<b>Maine</b>	New Brunswick	9 170	9 238	1 417 241	1 420 759	154.55	144.61
	Quebec	33 902	34 427	3 843 533	4 058 676	113.37	172.40
<b>Subtotal Imports: Maine</b>		<b>43 072</b>	<b>43 665</b>	<b>5 260 775</b>	<b>5 479 435</b>	<b>122.14</b>	<b>171.19</b>
<b>Massachusetts</b>	Ontario	1 348	1 666	155 816	278 840	115.59	167.37
	Quebec	40 800	40 800	4 077 796	4 077 796	99.95	99.95
<b>Subtotal Imports: Massachusetts</b>		<b>42 148</b>	<b>42 466</b>	<b>4 233 612</b>	<b>4 356 636</b>	<b>100.45</b>	<b>102.59</b>
<b>Michigan</b>	Ontario	444 225	834 671	40 129 528	64 639 577	90.34	65.80
<b>Subtotal Imports: Michigan</b>		<b>444 225</b>	<b>834 671</b>	<b>40 129 528</b>	<b>64 639 577</b>	<b>90.34</b>	<b>65.80</b>
<b>Minnesota</b>	Ontario	119 912	222 313	11 132 540	16 777 428	92.84	67.32
<b>Subtotal Imports: Minnesota</b>		<b>119 912</b>	<b>222 313</b>	<b>11 132 540</b>	<b>16 777 428</b>	<b>92.84</b>	<b>67.32</b>
<b>Missouri</b>	Ontario	0	208	0	10 166	0.00	48.88
<b>Subtotal Imports: Missouri</b>		<b>0</b>	<b>208</b>	<b>0</b>	<b>10 166</b>	<b>0.00</b>	<b>48.88</b>
<b>Montana</b>	Alberta	25	25	2 269	2 269	90.76	90.76
<b>Subtotal Imports: Montana</b>		<b>25</b>	<b>25</b>	<b>2 269</b>	<b>2 269</b>	<b>90.76</b>	<b>90.76</b>
<b>ND/Minn</b>	Manitoba	496 107	895 296	26 064 681	42 405 082	52.54	37.61
<b>Subtotal Imports: ND/Minn</b>		<b>496 107</b>	<b>895 296</b>	<b>26 064 681</b>	<b>42 405 082</b>	<b>52.54</b>	<b>37.61</b>

Footnotes:  
 1. Includes capacity and energy charges.  
 2. Average value for the month and the last 12 months (excludes capacity charge).



National Energy Board  
Office national de l'énergie

## TABLE 3B

### Import Purchases Summary Report by Source and Destination

Page 5  
04/03/12

Source	Destination	Energy (MW.h)		Revenue (CAN\$) <sup>1</sup>		CAN\$/MW.h <sup>2</sup>	
		FEB03	JAN03 - FEB03	FEB03	JAN03 - FEB03	FEB03	L12M
<b>New York</b>	Ontario	82 711	105 640	9 775 014	11 931 699	118.18	94.45
	Quebec	107 008	330 658	7 960 521	24 502 898	74.39	47.55
<b>Subtotal Imports: New York</b>		<b>189 719</b>	<b>436 298</b>	<b>17 735 535</b>	<b>36 434 597</b>	<b>93.48</b>	<b>59.75</b>
<b>North Dakota</b>	Saskatchewan	69 278	147 818	3 821 129	7 639 716	55.16	36.00
<b>Subtotal Imports: North Dakota</b>		<b>69 278</b>	<b>147 818</b>	<b>3 821 129</b>	<b>7 639 716</b>	<b>55.16</b>	<b>36.00</b>
<b>Ohio</b>	Ontario	0	1 226	0	138 451	0.00	112.93
<b>Subtotal Imports: Ohio</b>		<b>0</b>	<b>1 226</b>	<b>0</b>	<b>138 451</b>	<b>0.00</b>	<b>112.93</b>
<b>Oregon</b>	Alberta	175	2 630	14 254	163 431	81.45	47.93
<b>Subtotal Imports: Oregon</b>		<b>175</b>	<b>2 630</b>	<b>14 254</b>	<b>163 431</b>	<b>81.45</b>	<b>47.93</b>
<b>Pennsylvania</b>	Ontario	8 919	51 602	589 352	3 679 908	66.08	60.54
<b>Subtotal Imports: Pennsylvania</b>		<b>8 919</b>	<b>51 602</b>	<b>589 352</b>	<b>3 679 908</b>	<b>66.08</b>	<b>60.54</b>
<b>Washington</b>	Alberta	11 541	50 375	896 513	3 360 861	77.68	46.30
	British Columbia	276 961	625 399	14 128 632	28 613 721	51.01	34.37
<b>Subtotal Imports: Washington</b>		<b>288 502</b>	<b>675 774</b>	<b>15 025 144</b>	<b>31 974 582</b>	<b>52.08</b>	<b>35.56</b>
<b>Total Imports</b>		<b>1 756 920</b>	<b>3 456 605</b>	<b>129 878 297</b>	<b>223 288 042</b>	<b>73.92</b>	<b>55.12</b>

Footnotes:  
 1. Includes capacity and energy charges.  
 2. Average value for the month and the last 12 months (excludes capacity charge).





National Energy Board  
Office national de l'énergie

**TABLE 4**  
**Source of Production Report <sup>1</sup>**  
**Canadian Exports**

Page 1  
04/03/12

<b>Fuel Type</b>	<b>FEB03</b>		
	<b>Energy (MW.h)</b>	<b>Revenue (CAN\$) <sup>2</sup></b>	<b>CAN\$/MW.h <sup>2</sup></b>
Canadian Coal	3 521	238 568	67.76
Hydraulic	2 150 872	130 517 111	60.68
Imported Coal	9 632	559 988	58.14
Imported Oil	81 804	4 773 898	58.36
Natural Gas	11	626	58.11
Other	527 696	36 613 089	69.38
<b>Total</b>	<b>2 773 535</b>	<b>172 703 279</b>	<b>62.27</b>

Footnotes:

1. Source of production data filed by major exporters only.
2. Revenue figures are for illustrative purposes only and are strictly allocatable by energy source.

Additional Notes:

- Revenue for Permit 92 not available.



## TABLE 5 Source of Production Report <sup>1</sup> by Exporter

Exporter	Fuel Type	Authorization	FEB03		
			Energy (MW.h)	Revenue (CAN\$) <sup>2</sup>	CAN\$/MW.h <sup>2</sup>
<b>BC Hydro</b>	Hydraulic	Permit 105	325 245	29 697	0.09
		Permit 192	41 042	0	0.00
		Treaty 0	48 089	0	0.00
		<b>Subtotal</b>	<b>414 376</b>	<b>29 697</b>	<b>0.07</b>
	<b>Subtotal</b>		<b>414 376</b>	<b>29 697</b>	<b>0.07</b>
<b>Brascan</b>	Hydraulic	Permit 112	43 063	4 587 244	106.52
		<b>Subtotal</b>	<b>43 063</b>	<b>4 587 244</b>	<b>106.52</b>
		<b>Subtotal</b>	<b>43 063</b>	<b>4 587 244</b>	<b>106.52</b>
<b>Cargill Trading</b>	Other	Permit 204	7 701	711 795	92.43
		<b>Subtotal</b>	<b>7 701</b>	<b>711 795</b>	<b>92.43</b>
		<b>Subtotal</b>	<b>7 701</b>	<b>711 795</b>	<b>92.43</b>
<b>Conectiv Energy</b>	Other	Permit 212	7 871	701 721	89.15
		<b>Subtotal</b>	<b>7 871</b>	<b>701 721</b>	<b>89.15</b>
		<b>Subtotal</b>	<b>7 871</b>	<b>701 721</b>	<b>89.15</b>
<b>Coral Energy</b>	Other	Permit 174	10 628	545 871	51.36
		<b>Subtotal</b>	<b>10 628</b>	<b>545 871</b>	<b>51.36</b>
		<b>Subtotal</b>	<b>10 628</b>	<b>545 871</b>	<b>51.36</b>
<b>DTE Energy Trad</b>	Other	Permit 206	120 633	9 680 776	80.25
		<b>Subtotal</b>	<b>120 633</b>	<b>9 680 776</b>	<b>80.25</b>
		<b>Subtotal</b>	<b>120 633</b>	<b>9 680 776</b>	<b>80.25</b>

Footnotes:

1. Source of production data filed by major exporters only.
2. Revenue figures are for illustrative purposes only and are strictly allocatable by energy source.



## TABLE 5 Source of Production Report <sup>1</sup> by Exporter

Exporter	Fuel Type	Authorization	FEB03		
			Energy (MW.h)	Revenue (CAN\$) <sup>2</sup>	CAN\$/MW.h <sup>2</sup>
Enmax Marketing	Canadian Coal	Permit 169	3 521	238 568	67.76
		<b>Subtotal</b>	<b>3 521</b>	<b>238 568</b>	<b>67.76</b>
		<b>Subtotal</b>	<b>3 521</b>	<b>238 568</b>	<b>67.76</b>
Hydro-Quebec	Hydraulic	Licence 180	99 191	4 030 943	40.64
		Licence 181	15 712	638 507	40.64
		Licence 182	14 844	603 233	40.64
		Licence 183	28 111	1 142 380	40.64
		Licence 184	16 861	685 200	40.64
		Permit 64	914 491	81 963 725	89.63
		<b>Subtotal</b>	<b>1 089 210</b>	<b>89 063 989</b>	<b>81.77</b>
		<b>Subtotal</b>	<b>1 089 210</b>	<b>89 063 989</b>	<b>81.77</b>
Manitoba Hydro	Hydraulic	Licence 170	197 760	10 477 875	52.98
		Permit 45	12 511	1 047 489	83.72
		Permit 46	65 087	3 601 313	55.33
		Permit 68	14 601	540 434	37.01
		Permit 144	13 052	1 231 456	94.35
		Permit 155	13 870	996 001	71.81
		Permit 207	25 420	1 998 232	78.61
		<b>Subtotal</b>	<b>342 302</b>	<b>19 892 799</b>	<b>58.11</b>
	Imported Coal	Licence 170	5 564	294 955	53.01
		Permit 45	352	29 487	83.73
		Permit 46	1 832	101 378	55.33
		Permit 68	411	15 213	37.01

Footnotes:

1. Source of production data filed by major exporters only.
2. Revenue figures are for illustrative purposes only and are strictly allocatable by energy source.



## TABLE 5 Source of Production Report <sup>1</sup> by Exporter

Exporter	Fuel Type	Authorization	FEB03		
			Energy (MW.h)	Revenue (CAN\$) <sup>2</sup>	CAN\$/MW.h <sup>2</sup>
Manitoba Hydro	Imported Coal	Permit 144	367	34 666	94.36
		Permit 155	390	28 038	71.81
		Permit 207	715	56 251	78.67
		<b>Subtotal</b>	<b>9 632</b>	<b>559 988</b>	<b>58.14</b>
	Natural Gas	Licence 170	6	330	52.98
		Permit 45	0	33	83.68
		Permit 46	2	113	55.34
		Permit 68	0	17	36.98
		Permit 144	0	39	94.31
		Permit 155	0	31	71.74
		Permit 207	1	63	78.61
		<b>Subtotal</b>	<b>11</b>	<b>626</b>	<b>58.11</b>
	Other	Licence 170	45 620	2 417 458	52.99
		Permit 45	2 886	241 677	83.74
		Permit 46	15 014	830 896	55.34
		Permit 68	3 368	124 689	37.02
		Permit 144	3 010	284 122	94.39
		Permit 155	3 199	229 797	71.83
		Permit 207	5 865	461 033	78.61
		<b>Subtotal</b>	<b>78 962</b>	<b>4 589 671</b>	<b>58.13</b>
	<b>Subtotal</b>		<b>430 906</b>	<b>25 043 085</b>	<b>58.12</b>

Footnotes:

1. Source of production data filed by major exporters only.
2. Revenue figures are for illustrative purposes only and are strictly allocatable by energy source.



## TABLE 5 Source of Production Report <sup>1</sup> by Exporter

Exporter	Fuel Type	Authorization	FEB03			
			Energy (MW.h)	Revenue (CAN\$) <sup>2</sup>	CAN\$/MW.h <sup>2</sup>	
NB Power	Hydraulic	Permit 47	28	0	0.00	
		Permit 90	114	0	0.00	
		Permit 91	3	0	0.00	
		<b>Subtotal</b>	<b>145</b>	<b>0</b>	<b>0.00</b>	
	Imported Oil	Permit 47	6 528	380 930	58.36	
		Permit 90	28 084	1 638 919	58.36	
		Permit 91	47 193	2 754 048	58.36	
		<b>Subtotal</b>	<b>81 804</b>	<b>4 773 898</b>	<b>58.36</b>	
	Other	Permit 47	570	33 281	58.36	
		Permit 90	2 281	133 108	58.36	
		Permit 91	1 550	90 460	58.36	
		<b>Subtotal</b>	<b>4 401</b>	<b>256 850</b>	<b>58.36</b>	
	<b>Subtotal</b>		<b>86 350</b>	<b>5 030 748</b>	<b>58.26</b>	
	Powerex Corp.	Hydraulic	Permit 118	194 891	12 722 105	65.28
			<b>Subtotal</b>	<b>194 891</b>	<b>12 722 105</b>	<b>65.28</b>
Other		Permit 116	445	28 582	64.23	
		Permit 118	267 787	17 479 180	65.27	
		<b>Subtotal</b>	<b>268 232</b>	<b>17 507 761</b>	<b>65.27</b>	
<b>Subtotal</b>			<b>463 123</b>	<b>30 229 867</b>	<b>65.27</b>	
SPLIT ROCK	Other	Permit 221	29 268	2 618 643	89.47	
		<b>Subtotal</b>	<b>29 268</b>	<b>2 618 643</b>	<b>89.47</b>	
	<b>Subtotal</b>		<b>29 268</b>	<b>2 618 643</b>	<b>89.47</b>	

Footnotes:

1. Source of production data filed by major exporters only.
2. Revenue figures are for illustrative purposes only and are strictly allocatable by energy source.



**TABLE 5**  
**Source of Production Report <sup>1</sup>**  
**by Exporter**

<u>Exporter</u>	<u>Fuel Type</u>	<u>Authorization</u>	<b>FEB03</b>		
			<u>Energy (MW.h)</u>	<u>Revenue (CAN\$) <sup>2</sup></u>	<u>CAN\$/MW.h <sup>2</sup></u>
<b>Teck Cominco</b>	Hydraulic	Permit 132	66 885	4 221 276	63.11
		<b>Subtotal</b>	<b>66 885</b>	<b>4 221 276</b>	<b>63.11</b>
	<b>Subtotal</b>		<b>66 885</b>	<b>4 221 276</b>	<b>63.11</b>
<b>Total All Exporters</b>			<b>2 773 535</b>	<b>172 703 279</b>	<b>62.27</b>

Footnotes:

1. Source of production data filed by major exporters only.
2. Revenue figures are for illustrative purposes only and are strictly allocatable by energy source.