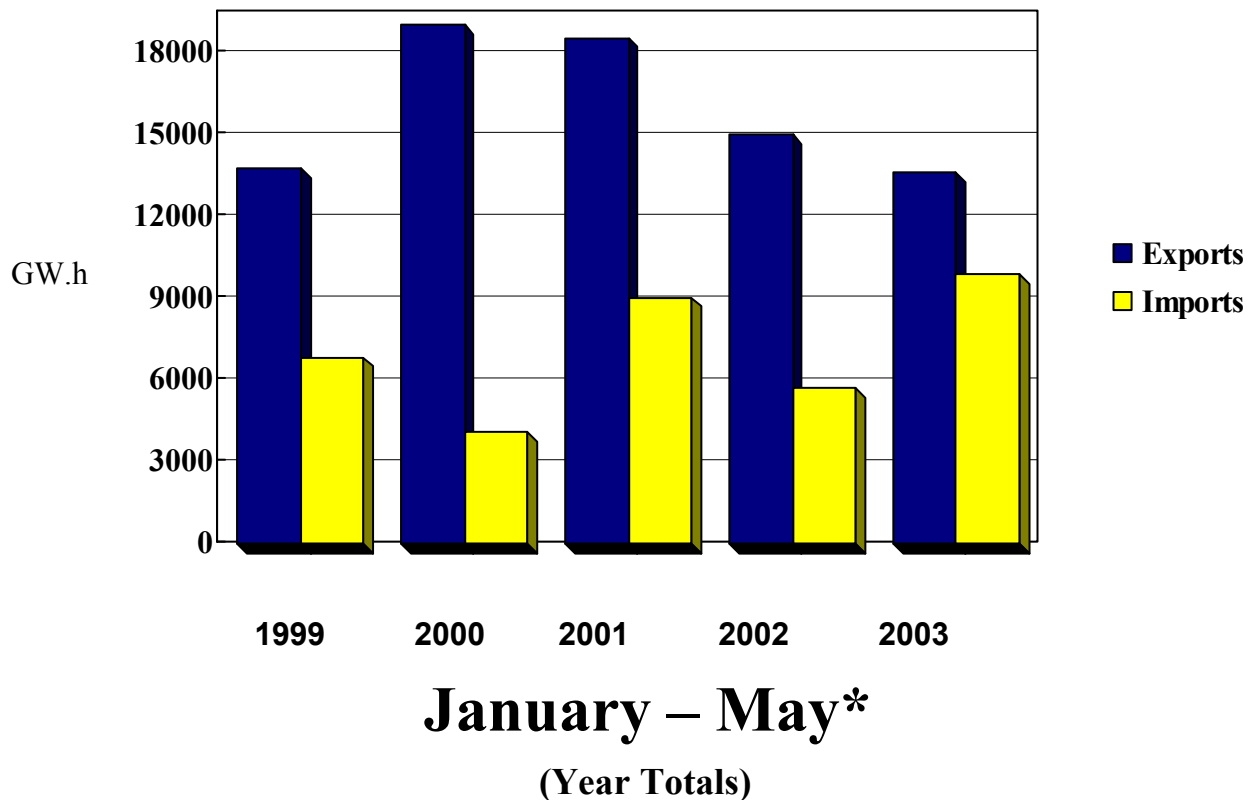




# Electricity Exports and Imports

## Monthly Statistics for May 2003 [Revision 7 May 2004]\*

Exports: 2749 GW.h  
Imports: 2344 GW.h





National Energy Board  
Office national de l'énergie

# TABLE 1

## Exports and Imports of Electricity

### Summary: Canada

#### MAY 2003

Page 1  
04/05/04

	Exchange Type	Energy (MW.h)		Revenue (CAN\$) <sup>1</sup>		CAN\$/MW.h <sup>2</sup>	
		MAY03	JAN03 - MAY03	MAY03	JAN03 - MAY03	MAY03	L12M
<b>Exports of Electric Energy</b>	Firm	1 120 655	5 103 713	65 692 541	335 536 292	49.23	54.31
	Interruptible	1 628 252	8 493 437	90 945 154	599 919 221	54.61	56.76
	Non-Revenue/Inadvertant	- 450 527	-1 728 410	0	0	0.00	0.00
	Service	112 427	468 686	62 776	1 098 781	0.56	4.37
<b>Total Exports</b>		<b>2 410 807</b>	<b>12 337 426</b>	<b>156 700 472</b>	<b>936 554 294</b>	<b>59.80</b>	<b>59.50</b>
Total Sales - Firm and Interruptible		2 748 907	13 597 150	156 637 695	935 455 513	52.42	55.96
<b>Imports of Electric Energy</b>	Non-Revenue/Inadvertant	- 496 076	-1 967 657	0	0	0.00	0.00
	Purchase	2 343 990	9 834 689	83 903 529	544 760 618	35.80	54.66
	Service	112 427	468 686	20 639	252 620	0.18	0.49
<b>Total Imports</b>		<b>1 960 341</b>	<b>8 335 718</b>	<b>83 924 168</b>	<b>545 013 239</b>	<b>42.81</b>	<b>62.27</b>
<b>Excess of Exports Over Imports</b>		<b>450 466</b>	<b>4 001 708</b>	<b>72 776 303</b>	<b>391 541 055</b>		
<b>Number of Export Licences:</b>		<b>9</b>					
<b>Number of Export Permits/Orders:</b>		<b>151</b>					
		<b>160</b>					

Footnotes:

1. Includes capacity and energy charges.
2. Average value for the month and the last 12 months (excludes capacity charge).

- F - Firm Sales
- I - Interruptible Sales
- P - Purchase (Import)
- N - Non-Revenue (Non-Revenue or Inadvertent)
- S - Service (Spinning Reserve, Storage, Unit Rental, Transmission, etc.)

*For further information, contact:*

**Mary-Jane Sam**  
**Statistical Research Officer,**  
**Commodities Business Unit**  
**National Energy Board**  
**(403) 299-3706**



## TABLE 2A

### Export Summary Report

#### by Source, Authorization and Exchange Type

Source	Authorization	Exchange Type	Energy (MW.h)		Revenue (CAN\$) <sup>1</sup>		CAN\$/MW.h <sup>2</sup>		
			MAY03	JAN03 - MAY03	MAY03	JAN03 - MAY03	MAY03	L12M	
<b>Alberta</b>									
Cargill Trading	Permit 204	F	25	25	4 611	4 611	184.44	184.44	
Enmax Marketing	Permit 169	I	865	11 505	27 532	663 805	31.83	43.47	
EPCOR Merchant	Permit 186	I	188	5 340	5 873	323 091	31.24	60.50	
TransCanada	Permit 78	I	1 254	14 438	50 964	816 392	40.64	52.23	
<b>Subtotal Firm and Interruptible Exports: Alberta</b>			<b>2 332</b>	<b>31 308</b>	<b>88 981</b>	<b>1 807 900</b>	<b>38.16</b>	<b>48.02</b>	
<b>British Columbia</b>									
BC Hydro	Permit 105	F	74	510	5 291	36 539	71.50	259.95	
	Permit 127	N	- 280 117	-1 653 602	0	0	0.00	0.00	
		S	109 865	448 499	0	0	0.00	0.00	
	Permit 192	N	744	131 327	0	0	0.00	0.00	
	Treaty	N	2 791	143 988	0	0	0.00	0.00	
Powerex Corp.	Permit 118	I	325 297	2 023 028	16 521 074	112 846 881	50.79	42.65	
Teck Cominco	Permit 132	F	42 003	307 055	1 475 731	17 051 794	35.13	45.97	
TransAlta Ener	Permit 168	F	27 347	42 858	1 108 511	1 873 957	40.54	41.44	
<b>Subtotal Firm and Interruptible Exports: British Columbia</b>			<b>394 721</b>	<b>2 373 451</b>	<b>19 110 608</b>	<b>131 809 171</b>	<b>48.42</b>	<b>43.00</b>	

Footnotes:

1. Includes capacity and energy charges.
2. Average value for the month and the last 12 months (excludes capacity charge).

- F - Firm Sales
- I - Interruptible Sales
- P - Purchase (Import)
- N - Non-Revenue (Non-Revenue or Inadvertent)
- S - Service (Spinning Reserve, Storage, Unit Rental, Transmission, etc.)



National Energy Board  
Office national de l'énergie

## TABLE 2A

### Export Summary Report

#### by Source, Authorization and Exchange Type

Page 2  
04/05/04

Source	Authorization	Exchange Type	Energy (MW.h)		Revenue (CAN\$) <sup>1</sup>		CAN\$/MW.h <sup>2</sup>	
			MAY03	JAN03 - MAY03	MAY03	JAN03 - MAY03	MAY03	L12M
<b>Manitoba</b>								
Manitoba Hydro	Licence 170	F	270 243	1 360 965	12 223 328	66 805 651	45.23	49.11
	Permit 35	F	0	0	0	7 319	0.00	32.52
	Permit 45	F	16 750	81 585	2 248 505	7 600 112	134.24	85.47
	Permit 46	I	86 839	537 918	4 341 477	28 287 008	49.99	46.93
		N	42 303	137 426	0	0	0.00	0.00
	Permit 68	F	17 812	99 305	621 629	3 494 256	34.90	38.55
	Permit 128	F	320	3 354	21 365	165 728	66.81	52.56
	Permit 144	F	17 600	87 088	1 171 760	7 655 869	66.58	92.93
	Permit 155	F	21 120	99 462	1 330 295	6 723 767	62.99	69.39
	Permit 207	F	35 200	172 066	2 535 391	13 009 357	72.03	77.76
Powerex Corp.	Permit 116	I	0	10	0	0	0.00	0.00
<b>Subtotal Firm and Interruptible Exports: Manitoba</b>			<b>465 884</b>	<b>2 441 753</b>	<b>24 493 750</b>	<b>133 749 068</b>	<b>52.57</b>	<b>53.26</b>
<b>New Brunswick</b>								
Fraser Inc.	Permit 225	F	26 490	127 335	1 840 245	8 999 892	69.47	70.68
NB Power	Permit 47	F	6 233	34 655	566 766	2 455 571	90.93	67.01
	Permit 90	F	10 224	118 450	948 027	8 181 163	92.73	67.05
	Permit 91	I	148 388	470 547	11 655 488	36 418 803	78.55	68.59

Footnotes:

1. Includes capacity and energy charges.
2. Average value for the month and the last 12 months (excludes capacity charge).

- F - Firm Sales
- I - Interruptible Sales
- P - Purchase (Import)
- N - Non-Revenue (Non-Revenue or Inadvertent)
- S - Service (Spinning Reserve, Storage, Unit Rental, Transmission, etc.)



## TABLE 2A

### Export Summary Report

#### by Source, Authorization and Exchange Type

Source	Authorization	Exchange Type	Energy (MW.h)		Revenue (CAN\$) <sup>1</sup>		CAN\$/MW.h <sup>2</sup>	
			MAY03	JAN03 - MAY03	MAY03	JAN03 - MAY03	MAY03	L12M
NB Power	Permit 148	F	146 876	286 309	7 554 188	15 467 326	51.43	60.77
WPS Power Dev.	Licence 177	F	17 601	35 583	735 718	1 512 427	41.80	29.14
<b>Subtotal Firm and Interruptible Exports: New Brunswick</b>			<b>355 812</b>	<b>1 072 878</b>	<b>23 300 430</b>	<b>73 035 181</b>	<b>65.49</b>	<b>65.20</b>
<b>Nova Scotia</b>								
Emera Energy	Permit 216	I	832	3 167	29 037	174 841	34.90	55.21
<b>Subtotal Firm and Interruptible Exports: Nova Scotia</b>			<b>832</b>	<b>3 167</b>	<b>29 037</b>	<b>174 841</b>	<b>34.90</b>	<b>55.21</b>
<b>Ontario</b>								
Brascan	Permit 112	F	105 923	136 654	4 631 661	6 454 968	43.73	47.24
Cargill Canada	Permit 204	F	0	26 233	0	2 494 464	0.00	87.87
Cargill Trading		F	9 743	9 743	534 823	534 823	54.89	54.89
Conectiv Energy	Permit 212	I	2 200	73 864	131 073	4 922 511	59.58	54.51
Coral Energy	Permit 174	F	49 900	200 399	2 002 146	12 069 020	40.12	58.29
D&W Subway	Permit 26	F	156	1 405	0	0	0.00	0.00

Footnotes:

1. Includes capacity and energy charges.
2. Average value for the month and the last 12 months (excludes capacity charge).

- F - Firm Sales
- I - Interruptible Sales
- P - Purchase (Import)
- N - Non-Revenue (Non-Revenue or Inadvertent)
- S - Service (Spinning Reserve, Storage, Unit Rental, Transmission, etc.)



## TABLE 2A Export Summary Report by Source, Authorization and Exchange Type

Source	Authorization	Exchange Type	Energy (MW.h)		Revenue (CAN\$) <sup>1</sup>		CAN\$/MW.h <sup>2</sup>	
			MAY03	JAN03 - MAY03	MAY03	JAN03 - MAY03	MAY03	L12M
DTE Energy Trad	Permit 206	F	114 823	576 334	5 960 212	36 209 023	51.91	58.89
EPCOR Merchant	Permit 187	F	7 045	22 382	281 608	1 267 638	39.97	56.64
Hydro One Net	Permit 25	F	0	20	0	1 081	0.00	52.34
Ind Ele Mark Op	Permit 22	N	- 216 248	- 487 549	0	0	0.00	0.00
Ont Power Gen	Permit 24	F	14	106	27	212	2.00	2.00
OPGI/OHIM	Permit 21	I	182 230	539 864	8 365 435	28 235 764	45.77	46.63
		S	2 562	20 187	62 776	1 098 781	24.50	40.40
PG&E Ener. Trad	Permit 146	F	0	2 190	0	107 778	0.00	48.79
Powerex Corp.	Permit 116	I	6 559	6 845	432 204	464 944	65.89	67.92
Sempra Corp	Permit 157	F	4 395	22 604	240 678	1 374 420	54.76	56.40
SPLIT ROCK	Permit 221	F	23 020	197 758	1 048 736	13 534 027	45.56	56.67
TransAlta Ener	Permit 168	F	1 110	1 110	41 554	41 554	37.44	37.44
<b>Subtotal Firm and Interruptible Exports: Ontario</b>			<b>507 117</b>	<b>1 817 510</b>	<b>23 670 158</b>	<b>107 712 225</b>	<b>46.63</b>	<b>53.37</b>

Footnotes:

1. Includes capacity and energy charges.
2. Average value for the month and the last 12 months (excludes capacity charge).

- F - Firm Sales
- I - Interruptible Sales
- P - Purchase (Import)
- N - Non-Revenue (Non-Revenue or Inadvertent)
- S - Service (Spinning Reserve, Storage, Unit Rental, Transmission, etc.)



## TABLE 2A

### Export Summary Report

#### by Source, Authorization and Exchange Type

Source	Authorization	Exchange Type	Energy (MW.h)		Revenue (CAN\$) <sup>1</sup>		CAN\$/MW.h <sup>2</sup>	
			MAY03	JAN03 - MAY03	MAY03	JAN03 - MAY03	MAY03	L12M
<b>Quebec</b>								
Brascan	Permit 112	F	17 050	278 443	1 140 896	20 920 922	66.91	74.57
Hydro-Quebec	Licence 180	F	74 904	434 520	7 822 632	44 104 506	37.20	41.07
	Licence 181	F	12 090	74 316	1 256 741	7 252 616	37.20	41.08
	Licence 182	F	11 568	67 496	1 156 624	6 551 355	37.20	41.06
	Licence 183	F	19 771	117 856	2 086 314	11 885 239	37.20	41.08
	Licence 184	F	13 226	76 978	1 412 907	7 964 754	37.20	41.07
	Permit 20	F	0	562	0	38 931	0.00	70.74
	Permit 64	I	637 327	4 011 824	40 172 962	340 926 276	59.90	69.02
	Permit 65	F	0	0	1 683 622	1 683 622	0.00	0.00
MEHQ	Permit 129	I	153 716	507 011	5 576 421	28 374 866	36.28	52.15
<b>Subtotal Firm and Interruptible Exports: Quebec</b>			<b>939 652</b>	<b>5 569 006</b>	<b>62 309 117</b>	<b>469 703 088</b>	<b>52.99</b>	<b>63.85</b>
<b>Saskatchewan</b>								
Northpoint	Permit 88	I	82 556	287 624	3 635 613	17 433 949	44.04	54.04
Powerex Corp.	Permit 116	I	1	452	0	30 091	0.00	66.57
<b>Subtotal Firm and Interruptible Exports: Saskatchewan</b>			<b>82 557</b>	<b>288 076</b>	<b>3 635 613</b>	<b>17 464 040</b>	<b>44.04</b>	<b>54.05</b>
<b>Total Firm and Interruptible Exports:</b>			<b>2 748 907</b>	<b>13 597 150</b>	<b>156 637 695</b>	<b>935 455 513</b>	<b>52.42</b>	<b>55.96</b>

Footnotes:

1. Includes capacity and energy charges.
2. Average value for the month and the last 12 months (excludes capacity charge).

- F - Firm Sales
- I - Interruptible Sales
- P - Purchase (Import)
- N - Non-Revenue (Non-Revenue or Inadvertent)
- S - Service (Spinning Reserve, Storage, Unit Rental, Transmission, etc.)



## TABLE 2B Import Summary Report by Destination, Authorization and Exchange Type

Destination	Authorization	Exchange Type	Energy (MW.h)		Revenue (CAN\$) <sup>1</sup>		CAN\$/MW.h <sup>2</sup>	
			MAY03	JAN03 - MAY03	MAY03	JAN03 - MAY03	MAY03	L12M
<b>Alberta</b>								
Cargill Canada	-	P	0	1 875	0	97 733	0.00	52.12
Cargill Trading		P	2 826	2 826	208 009	208 009	73.61	73.61
Coral Energy		P	0	2 905	0	206 088	0.00	70.94
Enmax Marketing		P	12 404	80 834	445 103	4 748 008	35.88	50.67
EPCOR Merchant		P	15 154	42 479	693 685	2 473 211	45.78	49.58
TransCanada		P	3 124	17 942	114 125	1 107 493	36.53	47.63
<b>Subtotal Purchased Imports: Alberta</b>			<b>33 508</b>	<b>148 861</b>	<b>1 460 923</b>	<b>8 840 543</b>	<b>43.60</b>	<b>50.33</b>
<b>British Columbia</b>								
Aquila Networks		P	20	2 791	350	201 650	17.50	71.30
BC Hydro		N	- 283 074	-1 514 413	0	0	0.00	0.00
		S	109 865	448 499	0	0	0.00	0.00
Powerex Corp.		P	814 217	2 459 162	25 700 354	96 402 214	31.56	36.14
Teck Cominco		P	31 999	118 284	769 380	5 651 011	24.04	36.40

Footnotes:

1. Includes capacity and energy charges.
2. Average value for the month and the last 12 months (excludes capacity charge).

- F - Firm Sales
- I - Interruptible Sales
- P - Purchase (Import)
- N - Non-Revenue (Non-Revenue or Inadvertent)
- S - Service (Spinning Reserve, Storage, Unit Rental, Transmission, etc.)





## TABLE 2B

### Import Summary Report

#### by Destination, Authorization and Exchange Type

Destination	Authorization	Exchange Type	Energy (MW.h)		Revenue (CAN\$) <sup>1</sup>		CAN\$/MW.h <sup>2</sup>	
			MAY03	JAN03 - MAY03	MAY03	JAN03 - MAY03	MAY03	L12M
TransAlta Ener	-	P	302	16 941	7 717	1 030 277	25.55	39.38
<b>Subtotal Purchased Imports: British Columbia</b>			<b>846 538</b>	<b>2 597 178</b>	<b>26 477 801</b>	<b>103 285 153</b>	<b>31.28</b>	<b>36.26</b>
<b>Manitoba</b>								
Manitoba Hydro		P	345 566	2 227 522	8 162 933	98 406 493	23.62	39.39
<b>Subtotal Purchased Imports: Manitoba</b>			<b>345 566</b>	<b>2 227 522</b>	<b>8 162 933</b>	<b>98 406 493</b>	<b>23.62</b>	<b>39.39</b>
<b>New Brunswick</b>								
NB Power		P	1 146	12 813	32 155	1 534 780	28.06	119.78
WPS Power Dev.		P	5	21	188	401	41.80	13.18
<b>Subtotal Purchased Imports: New Brunswick</b>			<b>1 151</b>	<b>12 834</b>	<b>32 343</b>	<b>1 535 181</b>	<b>28.11</b>	<b>117.47</b>
<b>Ontario</b>								
Brascan		P	38 475	256 459	2 398 851	19 681 619	62.35	76.74
Cargill Canada		P	0	281 579	0	21 678 983	0.00	66.11
Cargill Trading		P	61 929	61 929	2 556 404	2 556 404	41.28	41.28

Footnotes:

1. Includes capacity and energy charges.
2. Average value for the month and the last 12 months (excludes capacity charge).

- F - Firm Sales
- I - Interruptible Sales
- P - Purchase (Import)
- N - Non-Revenue (Non-Revenue or Inadvertent)
- S - Service (Spinning Reserve, Storage, Unit Rental, Transmission, etc.)



## TABLE 2B Import Summary Report by Destination, Authorization and Exchange Type

Destination	Authorization	Exchange Type	Energy (MW.h)		Revenue (CAN\$) <sup>1</sup>		CAN\$/MW.h <sup>2</sup>	
			MAY03	JAN03 - MAY03	MAY03	JAN03 - MAY03	MAY03	L12M
Conectiv Energy	-	P	34 263	341 784	1 605 238	27 214 437	46.85	75.69
Constellation		P	10 889	50 803	680 362	5 610 302	62.48	90.93
Consumers Energy		P	0	83	0	12 284	0.00	148.00
Coral Energy		P	4 442	19 792	314 050	2 000 716	70.70	146.26
D&W Subway		P	153	726	0	0	0.00	0.00
Detroit Edison		P	0	117	0	69 471	0.00	593.77
DTE Energy Trad		P	206 217	1 179 901	7 835 710	80 548 677	38.00	67.54
Dynegy		P	22 588	155 998	1 160 105	14 150 025	51.36	78.51
EPCOR Merchant		P	0	2 067	0	346 502	0.00	138.17
Ind Ele Mark Op		N	- 213 002	- 453 244	0	0	0.00	0.00
Mirant Americas		P	100	100	3 069	3 069	30.69	30.69
Morgan Stanley		P	0	9 910	0	1 331 069	0.00	127.25
OPGI/OHIM		P	201 845	299 949	10 083 641	17 722 524	49.96	56.77
		S	2 562	20 187	20 639	252 620	8.06	4.68
PG&E Ener. Trad		P	0	45 489	0	3 628 044	0.00	82.13

Footnotes:

1. Includes capacity and energy charges.
2. Average value for the month and the last 12 months (excludes capacity charge).

- F - Firm Sales
- I - Interruptible Sales
- P - Purchase (Import)
- N - Non-Revenue (Non-Revenue or Inadvertent)
- S - Service (Spinning Reserve, Storage, Unit Rental, Transmission, etc.)



## TABLE 2B Import Summary Report by Destination, Authorization and Exchange Type

Destination	Authorization	Exchange Type	Energy (MW.h)		Revenue (CAN\$) <sup>1</sup>		CAN\$/MW.h <sup>2</sup>	
			MAY03	JAN03 - MAY03	MAY03	JAN03 - MAY03	MAY03	L12M
Powerex Corp.	-	P	451	18 397	18 414	1 290 658	40.83	51.12
Sempra Corp		P	760	7 292	40 428	541 368	53.19	94.69
SPLIT ROCK		P	49 641	498 758	2 151 025	37 706 755	43.33	69.49
TransAlta Ener		P	12 603	19 941	477 951	1 012 630	37.92	50.78
TransCanada PM		P	0	685	0	226 818	0.00	237.01
<b>Subtotal Purchased Imports: Ontario</b>			<b>644 356</b>	<b>3 251 759</b>	<b>29 325 247</b>	<b>237 332 354</b>	<b>45.51</b>	<b>70.36</b>
<b>Quebec</b>								
Brascan		P	5 081	149 444	221 482	12 471 148	43.59	79.13
Hydro-Quebec		P	415 019	994 502	15 904 812	50 328 265	38.32	48.53
MEHQ		P	6 616	123 659	808 969	16 543 211	122.27	162.65
<b>Subtotal Purchased Imports: Quebec</b>			<b>426 716</b>	<b>1 267 605</b>	<b>16 935 263</b>	<b>79 342 625</b>	<b>39.69</b>	<b>61.80</b>
<b>Saskatchewan</b>								
Northpoint		P	46 147	328 774	1 508 833	16 014 728	32.70	38.73

Footnotes:

1. Includes capacity and energy charges.
2. Average value for the month and the last 12 months (excludes capacity charge).

- F - Firm Sales
- I - Interruptible Sales
- P - Purchase (Import)
- N - Non-Revenue (Non-Revenue or Inadvertent)
- S - Service (Spinning Reserve, Storage, Unit Rental, Transmission, etc.)



National Energy Board  
Office national de l'énergie

## TABLE 2B Import Summary Report by Destination, Authorization and Exchange Type

Page 10  
04/05/04

Destination	Authorization	Exchange Type	Energy (MW.h)		Revenue (CAN\$) <sup>1</sup>		CAN\$/MW.h <sup>2</sup>	
			MAY03	JAN03 - MAY03	MAY03	JAN03 - MAY03	MAY03	L12M
Powerex Corp.	-	P	9	156	187	3 543	20.75	22.71
<b>Subtotal Purchased Imports: Saskatchewan</b>			<b>46 156</b>	<b>328 930</b>	<b>1 509 020</b>	<b>16 018 271</b>	<b>32.69</b>	<b>38.73</b>
<b>Total Purchased Imports:</b>			<b>2 343 990</b>	<b>9 834 689</b>	<b>83 903 529</b>	<b>544 760 618</b>	<b>35.80</b>	<b>54.66</b>

Footnotes:

1. Includes capacity and energy charges.
2. Average value for the month and the last 12 months (excludes capacity charge).

- F - Firm Sales
- I - Interruptible Sales
- P - Purchase (Import)
- N - Non-Revenue (Non-Revenue or Inadvertent)
- S - Service (Spinning Reserve, Storage, Unit Rental, Transmission, etc.)



National Energy Board  
Office national de l'énergie

## TABLE 3A

### Export Sales Summary Report by Destination and Source

Page 1  
04/05/04

Destination	Source	Energy (MW.h)		Revenue (CAN\$) <sup>1</sup>		CAN\$/MW.h <sup>2</sup>	
		MAY03	JAN03 - MAY03	MAY03	JAN03 - MAY03	MAY03	L12M
<b>Alaska</b>	British Columbia	74	510	5 291	36 539	71.50	259.95
<b>Subtotal Exports: Alaska</b>		<b>74</b>	<b>510</b>	<b>5 291</b>	<b>36 539</b>	<b>71.50</b>	<b>259.95</b>
<b>Arizona</b>	British Columbia	2 393	4 642	190 584	377 927	79.64	57.06
<b>Subtotal Exports: Arizona</b>		<b>2 393</b>	<b>4 642</b>	<b>190 584</b>	<b>377 927</b>	<b>79.64</b>	<b>57.06</b>
<b>California</b>	British Columbia	27 034	110 620	1 826 985	6 407 969	67.58	38.65
<b>Subtotal Exports: California</b>		<b>27 034</b>	<b>110 620</b>	<b>1 826 985</b>	<b>6 407 969</b>	<b>67.58</b>	<b>38.65</b>
<b>Colorado</b>	British Columbia	1 093	1 393	90 769	134 843	83.05	96.80
<b>Subtotal Exports: Colorado</b>		<b>1 093</b>	<b>1 393</b>	<b>90 769</b>	<b>134 843</b>	<b>83.05</b>	<b>96.80</b>
<b>Idaho</b>	British Columbia	726	735	60 420	60 864	83.22	82.81
<b>Subtotal Exports: Idaho</b>		<b>726</b>	<b>735</b>	<b>60 420</b>	<b>60 864</b>	<b>83.22</b>	<b>82.81</b>
<b>Maine</b>	New Brunswick	355 812	1 072 878	23 300 430	73 035 181	65.49	65.20
	Nova Scotia	832	3 167	29 037	174 841	34.90	55.21
	Quebec	153 716	507 011	5 576 421	28 374 866	36.28	52.15
<b>Subtotal Exports: Maine</b>		<b>510 360</b>	<b>1 583 056</b>	<b>28 905 888</b>	<b>101 584 888</b>	<b>56.64</b>	<b>61.78</b>
<b>Massachusetts</b>	Quebec	0	43 940	0	4 577 824	0.00	94.39
<b>Subtotal Exports: Massachusetts</b>		<b>0</b>	<b>43 940</b>	<b>0</b>	<b>4 577 824</b>	<b>0.00</b>	<b>94.39</b>
<b>Michigan</b>	Ontario	122 295	587 735	6 379 607	36 771 654	52.17	58.65
<b>Subtotal Exports: Michigan</b>		<b>122 295</b>	<b>587 735</b>	<b>6 379 607</b>	<b>36 771 654</b>	<b>52.17</b>	<b>58.65</b>
<b>Minnesota</b>	Ontario	2 224	6 659	128 775	383 369	57.90	54.75
<b>Subtotal Exports: Minnesota</b>		<b>2 224</b>	<b>6 659</b>	<b>128 775</b>	<b>383 369</b>	<b>57.90</b>	<b>54.75</b>

Footnotes:

1. Includes capacity and energy charges.
2. Average value for the month and the last 12 months (excludes capacity charge).



National Energy Board  
Office national de l'énergie

## TABLE 3A

### Export Sales Summary Report by Destination and Source

Page 2  
04/05/04

Destination	Source	Energy (MW.h)		Revenue (CAN\$) <sup>1</sup>		CAN\$/MW.h <sup>2</sup>	
		MAY03	JAN03 - MAY03	MAY03	JAN03 - MAY03	MAY03	L12M
<b>Montana</b>	British Columbia	1 559	2 361	122 511	177 031	78.58	53.74
<b>Subtotal Exports: Montana</b>		<b>1 559</b>	<b>2 361</b>	<b>122 511</b>	<b>177 031</b>	<b>78.58</b>	<b>53.74</b>
<b>ND/Minn</b>	Manitoba	465 884	2 441 743	24 493 750	133 749 068	52.57	53.26
<b>Subtotal Exports: ND/Minn</b>		<b>465 884</b>	<b>2 441 743</b>	<b>24 493 750</b>	<b>133 749 068</b>	<b>52.57</b>	<b>53.26</b>
<b>Nevada</b>	British Columbia	7 095	25 763	523 293	1 773 608	73.76	69.08
<b>Subtotal Exports: Nevada</b>		<b>7 095</b>	<b>25 763</b>	<b>523 293</b>	<b>1 773 608</b>	<b>73.76</b>	<b>69.08</b>
<b>New England</b>	Ontario	0	10	0	77	0.00	7.68
	Quebec	8 326	26 089	600 638	1 832 458	72.14	70.24
<b>Subtotal Exports: New England</b>		<b>8 326</b>	<b>26 099</b>	<b>600 638</b>	<b>1 832 535</b>	<b>72.14</b>	<b>70.21</b>
<b>New Mexico</b>	British Columbia	2 738	11 418	197 913	1 004 795	72.28	76.50
<b>Subtotal Exports: New Mexico</b>		<b>2 738</b>	<b>11 418</b>	<b>197 913</b>	<b>1 004 795</b>	<b>72.28</b>	<b>76.50</b>
<b>New York</b>	Ontario	375 016	1 215 523	16 690 648	70 085 998	44.51	51.27
	Quebec	642 105	4 199 226	42 129 550	355 055 387	65.61	68.96
<b>Subtotal Exports: New York</b>		<b>1 017 121</b>	<b>5 414 750</b>	<b>58 820 198</b>	<b>425 141 386</b>	<b>57.83</b>	<b>65.91</b>
<b>North Dakota</b>	Saskatchewan	82 556	287 624	3 635 613	17 433 949	44.04	54.04
<b>Subtotal Exports: North Dakota</b>		<b>82 556</b>	<b>287 624</b>	<b>3 635 613</b>	<b>17 433 949</b>	<b>44.04</b>	<b>54.04</b>
<b>Ohio</b>	Ontario	206	206	8 449	8 449	41.01	41.01
<b>Subtotal Exports: Ohio</b>		<b>206</b>	<b>206</b>	<b>8 449</b>	<b>8 449</b>	<b>41.01</b>	<b>41.01</b>
<b>Oregon</b>	Alberta	155	1 435	6 659	69 975	42.96	48.76
	British Columbia	212 987	778 873	11 710 905	43 751 190	54.98	48.57
<b>Subtotal Exports: Oregon</b>		<b>213 142</b>	<b>780 308</b>	<b>11 717 564</b>	<b>43 821 165</b>	<b>54.98</b>	<b>48.57</b>

Footnotes:

1. Includes capacity and energy charges.
2. Average value for the month and the last 12 months (excludes capacity charge).



National Energy Board  
Office national de l'énergie

## TABLE 3A

### Export Sales Summary Report by Destination and Source

Page 3  
04/05/04

Destination	Source	Energy (MW.h)		Revenue (CAN\$) <sup>1</sup>		CAN\$/MW.h <sup>2</sup>	
		MAY03	JAN03 - MAY03	MAY03	JAN03 - MAY03	MAY03	L12M
<b>Pennsylvania</b>	Ontario	6 559	6 559	432 204	432 204	65.89	65.89
	Saskatchewan	0	443	0	29 887	0.00	67.47
<b>Subtotal Exports: Pennsylvania</b>		<b>6 559</b>	<b>7 002</b>	<b>432 204</b>	<b>462 091</b>	<b>65.89</b>	<b>65.99</b>
<b>Tennessee</b>	Saskatchewan	1	1	0	0	0.00	0.00
<b>Subtotal Exports: Tennessee</b>		<b>1</b>	<b>1</b>	<b>0</b>	<b>0</b>	<b>0.00</b>	<b>0.00</b>
<b>Utah</b>	British Columbia	169	4 182	13 252	476 447	78.41	108.23
<b>Subtotal Exports: Utah</b>		<b>169</b>	<b>4 182</b>	<b>13 252</b>	<b>476 447</b>	<b>78.41</b>	<b>108.23</b>
<b>Vermont</b>	Quebec	135 505	792 740	14 002 509	79 862 552	103.34	42.37
<b>Subtotal Exports: Vermont</b>		<b>135 505</b>	<b>792 740</b>	<b>14 002 509</b>	<b>79 862 552</b>	<b>103.34</b>	<b>42.37</b>
<b>Virginia</b>	Manitoba	0	10	0	0	0.00	0.00
	Saskatchewan	0	6	0	0	0.00	0.00
<b>Subtotal Exports: Virginia</b>		<b>0</b>	<b>16</b>	<b>0</b>	<b>0</b>	<b>0.00</b>	<b>0.00</b>
<b>Washington</b>	Alberta	2 177	29 873	82 322	1 737 925	37.81	48.01
	British Columbia	137 290	1 414 551	4 239 609	75 803 260	30.88	40.87
<b>Subtotal Exports: Washington</b>		<b>139 467</b>	<b>1 444 424</b>	<b>4 321 931</b>	<b>77 541 185</b>	<b>30.99</b>	<b>40.97</b>
<b>Wisconsin</b>	Ontario	818	818	30 475	30 475	37.26	37.26
	Saskatchewan	0	2	0	203	0.00	101.71
<b>Subtotal Exports: Wisconsin</b>		<b>818</b>	<b>820</b>	<b>30 475</b>	<b>30 678</b>	<b>37.26</b>	<b>37.41</b>
<b>Wyoming</b>	British Columbia	1 563	18 403	129 076	1 804 699	82.58	83.55
<b>Subtotal Exports: Wyoming</b>		<b>1 563</b>	<b>18 403</b>	<b>129 076</b>	<b>1 804 699</b>	<b>82.58</b>	<b>83.55</b>
<b>Total Exports</b>		<b>2 748 907</b>	<b>13 597 150</b>	<b>156 637 695</b>	<b>935 455 513</b>	<b>56.98</b>	<b>55.96</b>

Footnotes:

1. Includes capacity and energy charges.
2. Average value for the month and the last 12 months (excludes capacity charge).



National Energy Board  
Office national de l'énergie

## TABLE 3B

### Import Purchases Summary Report by Source and Destination

Page 4  
04/05/04

Source	Destination	Energy (MW.h)		Revenue (CAN\$) <sup>1</sup>		CAN\$/MW.h <sup>2</sup>	
		MAY03	JAN03 - MAY03	MAY03	JAN03 - MAY03	MAY03	L12M
<b>Illinois</b>	Ontario	22 588	156 548	1 160 105	14 176 818	51.36	78.45
<b>Subtotal Imports: Illinois</b>		<b>22 588</b>	<b>156 548</b>	<b>1 160 105</b>	<b>14 176 818</b>	<b>51.36</b>	<b>78.45</b>
<b>Iowa</b>	Ontario	1 265	1 319	38 815	40 700	30.68	30.86
<b>Subtotal Imports: Iowa</b>		<b>1 265</b>	<b>1 319</b>	<b>38 815</b>	<b>40 700</b>	<b>30.68</b>	<b>30.86</b>
<b>Maine</b>	New Brunswick	1 151	12 834	32 343	1 535 181	28.11	117.47
	Quebec	6 616	123 659	808 969	16 543 211	122.27	162.65
<b>Subtotal Imports: Maine</b>		<b>7 767</b>	<b>136 493</b>	<b>841 312</b>	<b>18 078 392</b>	<b>108.33</b>	<b>160.79</b>
<b>Massachusetts</b>	Ontario	0	2 433	0	401 725	0.00	165.12
	Quebec	0	40 800	0	4 077 796	0.00	99.95
<b>Subtotal Imports: Massachusetts</b>		<b>0</b>	<b>43 233</b>	<b>0</b>	<b>4 479 521</b>	<b>0.00</b>	<b>103.61</b>
<b>Michigan</b>	Ontario	459 421	1 973 116	20 201 853	135 122 212	43.97	64.37
<b>Subtotal Imports: Michigan</b>		<b>459 421</b>	<b>1 973 116</b>	<b>20 201 853</b>	<b>135 122 212</b>	<b>43.97</b>	<b>64.37</b>
<b>Minnesota</b>	Alberta	2 826	4 701	208 009	305 742	73.61	65.04
	Ontario	104 613	569 401	4 336 718	39 628 842	41.45	66.86
<b>Subtotal Imports: Minnesota</b>		<b>107 439</b>	<b>574 102</b>	<b>4 544 727</b>	<b>39 934 584</b>	<b>42.30</b>	<b>66.85</b>
<b>Missouri</b>	Ontario	0	208	0	10 166	0.00	48.88
<b>Subtotal Imports: Missouri</b>		<b>0</b>	<b>208</b>	<b>0</b>	<b>10 166</b>	<b>0.00</b>	<b>48.88</b>
<b>Montana</b>	Alberta	42	67	2 326	4 595	55.38	68.58
<b>Subtotal Imports: Montana</b>		<b>42</b>	<b>67</b>	<b>2 326</b>	<b>4 595</b>	<b>55.38</b>	<b>68.58</b>
<b>ND/Minn</b>	Manitoba	345 566	2 227 522	8 162 933	98 406 493	23.62	39.39
<b>Subtotal Imports: ND/Minn</b>		<b>345 566</b>	<b>2 227 522</b>	<b>8 162 933</b>	<b>98 406 493</b>	<b>23.62</b>	<b>39.39</b>

Footnotes:

1. Includes capacity and energy charges.
2. Average value for the month and the last 12 months (excludes capacity charge).





National Energy Board  
Office national de l'énergie

## TABLE 3B

### Import Purchases Summary Report by Source and Destination

Page 5  
04/05/04

Source	Destination	Energy (MW.h)		Revenue (CAN\$) <sup>1</sup>		CAN\$/MW.h <sup>2</sup>	
		MAY03	JAN03 - MAY03	MAY03	JAN03 - MAY03	MAY03	L12M
<b>New York</b>	Ontario	51 927	483 197	3 411 367	43 290 663	65.70	92.95
	Quebec	420 100	1 103 146	16 126 294	58 721 618	38.39	50.15
<b>Subtotal Imports: New York</b>		<b>472 027</b>	<b>1 586 343</b>	<b>19 537 661</b>	<b>102 012 280</b>	<b>41.39</b>	<b>63.23</b>
<b>North Dakota</b>	Saskatchewan	46 147	328 774	1 508 833	16 014 728	32.70	38.73
<b>Subtotal Imports: North Dakota</b>		<b>46 147</b>	<b>328 774</b>	<b>1 508 833</b>	<b>16 014 728</b>	<b>32.70</b>	<b>38.73</b>
<b>Ohio</b>	Ontario	4 091	9 817	157 974	586 371	38.62	59.73
<b>Subtotal Imports: Ohio</b>		<b>4 091</b>	<b>9 817</b>	<b>157 974</b>	<b>586 371</b>	<b>38.62</b>	<b>59.73</b>
<b>Oregon</b>	Alberta	480	4 020	20 234	266 006	42.15	54.04
	British Columbia	0	15	0	2 000	0.00	133.33
<b>Subtotal Imports: Oregon</b>		<b>480</b>	<b>4 035</b>	<b>20 234</b>	<b>268 006</b>	<b>42.15</b>	<b>54.19</b>
<b>Pennsylvania</b>	Ontario	451	55 720	18 414	4 074 857	40.83	61.54
<b>Subtotal Imports: Pennsylvania</b>		<b>451</b>	<b>55 720</b>	<b>18 414</b>	<b>4 074 857</b>	<b>40.83</b>	<b>61.54</b>
<b>Washington</b>	Alberta	30 160	140 073	1 230 354	8 264 200	40.79	49.94
	British Columbia	846 538	2 597 163	26 477 801	103 283 153	31.28	36.25
	Saskatchewan	9	156	187	3 543	20.75	22.71
<b>Subtotal Imports: Washington</b>		<b>876 707</b>	<b>2 737 392</b>	<b>27 708 342</b>	<b>111 550 895</b>	<b>31.61</b>	<b>37.16</b>
<b>Total Imports</b>		<b>2 343 990</b>	<b>9 834 689</b>	<b>83 903 529</b>	<b>544 760 618</b>	<b>35.80</b>	<b>54.66</b>

Footnotes:  
1. Includes capacity and energy charges.  
2. Average value for the month and the last 12 months (excludes capacity charge).



National Energy Board  
Office national de l'énergie

## TABLE 4 Source of Production Report <sup>1</sup> Canadian Exports

Page 1  
04/05/04

Fuel Type	MAY03		
	Energy (MW.h)	Revenue (CAN\$) <sup>2</sup>	CAN\$/MW.h <sup>2</sup>
Canadian Coal	2 816	180 752	64.20
Hydraulic	1 313 539	70 091 359	53.36
Imported Coal	71 270	5 444 216	76.39
Imported Oil	76 435	6 143 597	80.38
Natural Gas	147 446	7 599 206	51.54
Nuclear	16 445	1 292 723	78.61
Other	619 180	31 427 702	50.76
<b>Total</b>	<b>2 247 131</b>	<b>122 179 555</b>	<b>54.37</b>

Footnotes:

1. Source of production data filed by major exporters only.
2. Revenue figures are for illustrative purposes only and are strictly allocatable by energy source.

Additional Notes:

- Revenue for Permit 92 not available.



## TABLE 5

### Source of Production Report <sup>1</sup> by Exporter

Exporter	Fuel Type	Authorization	MAY03		
			Energy (MW.h)	Revenue (CAN\$) <sup>2</sup>	CAN\$/MW.h <sup>2</sup>
<b>BC Hydro</b>	Hydraulic	Permit 105	16	1 323	83.64
		Permit 192	744	0	0.00
		Treaty 0	2 791	0	0.00
		<b>Subtotal</b>	<b>3 551</b>	<b>1 323</b>	<b>0.37</b>
	<b>Subtotal</b>		<b>3 551</b>	<b>1 323</b>	<b>0.37</b>
<b>Brascan</b>	Hydraulic	Permit 112	122 973	5 772 557	46.94
		<b>Subtotal</b>	<b>122 973</b>	<b>5 772 557</b>	<b>46.94</b>
		<b>Subtotal</b>	<b>122 973</b>	<b>5 772 557</b>	<b>46.94</b>
<b>Cargill Trading</b>	Other	Permit 204	9 768	539 434	55.22
		<b>Subtotal</b>	<b>9 768</b>	<b>539 434</b>	<b>55.22</b>
		<b>Subtotal</b>	<b>9 768</b>	<b>539 434</b>	<b>55.22</b>
<b>Conectiv Energy</b>	Other	Permit 212	2 200	131 073	59.58
		<b>Subtotal</b>	<b>2 200</b>	<b>131 073</b>	<b>59.58</b>
		<b>Subtotal</b>	<b>2 200</b>	<b>131 073</b>	<b>59.58</b>
<b>Coral Energy</b>	Other	Permit 174	49 900	2 002 146	40.12
		<b>Subtotal</b>	<b>49 900</b>	<b>2 002 146</b>	<b>40.12</b>
		<b>Subtotal</b>	<b>49 900</b>	<b>2 002 146</b>	<b>40.12</b>
<b>DTE Energy Trad</b>	Other	Permit 206	114 823	5 960 212	51.91
		<b>Subtotal</b>	<b>114 823</b>	<b>5 960 212</b>	<b>51.91</b>
		<b>Subtotal</b>	<b>114 823</b>	<b>5 960 212</b>	<b>51.91</b>

Footnotes:

1. Source of production data filed by major exporters only.
2. Revenue figures are for illustrative purposes only and are strictly allocatable by energy source.



## TABLE 5 Source of Production Report <sup>1</sup> by Exporter

Exporter	Fuel Type	Authorization	MAY03		
			Energy (MW.h)	Revenue (CAN\$) <sup>2</sup>	CAN\$/MW.h <sup>2</sup>
Enmax Marketing	Canadian Coal	Permit 169	865	27 532	31.83
		<b>Subtotal</b>	<b>865</b>	<b>27 532</b>	<b>31.83</b>
		<b>Subtotal</b>	<b>865</b>	<b>27 532</b>	<b>31.83</b>
Hydro-Quebec	Hydraulic	Licence 180	74 904	2 786 542	37.20
		Licence 181	12 090	449 766	37.20
		Licence 182	11 568	430 347	37.20
		Licence 183	19 771	735 511	37.20
		Licence 184	13 226	492 027	37.20
		Permit 64	637 327	38 176 484	59.90
		<b>Subtotal</b>	<b>768 886</b>	<b>43 070 678</b>	<b>56.02</b>
		<b>Subtotal</b>	<b>768 886</b>	<b>43 070 678</b>	<b>56.02</b>
Manitoba Hydro	Hydraulic	Licence 170	218 327	9 875 141	45.23
		Permit 45	13 532	1 816 552	134.24
		Permit 46	70 157	3 507 449	49.99
		Permit 68	14 390	502 210	34.90
		Permit 144	14 219	946 657	66.58
		Permit 155	17 063	1 074 736	62.99
		Permit 207	28 438	2 048 324	72.03
	<b>Subtotal</b>	<b>376 126</b>	<b>19 771 068</b>	<b>52.57</b>	
	Imported Coal	Licence 170	4 140	187 261	45.23
		Permit 45	257	34 447	134.04
		Permit 46	1 330	66 511	50.01
		Permit 68	273	9 523	34.88

Footnotes:

1. Source of production data filed by major exporters only.
2. Revenue figures are for illustrative purposes only and are strictly allocatable by energy source.



## TABLE 5 Source of Production Report <sup>1</sup> by Exporter

Exporter	Fuel Type	Authorization	MAY03		
			Energy (MW.h)	Revenue (CAN\$) <sup>2</sup>	CAN\$/MW.h <sup>2</sup>
Manitoba Hydro	Imported Coal	Permit 144	270	17 951	66.49
		Permit 155	324	20 380	62.90
		Permit 207	539	38 842	72.06
		<b>Subtotal</b>	<b>7 133</b>	<b>374 917</b>	<b>52.56</b>
	Other	Licence 170	47 775	2 160 926	45.23
		Permit 45	2 961	397 507	134.25
		Permit 46	15 352	767 517	49.99
		Permit 68	3 149	109 896	34.90
		Permit 144	3 111	207 152	66.59
		Permit 155	3 734	235 179	62.98
		Permit 207	6 223	448 224	72.03
		<b>Subtotal</b>	<b>82 305</b>	<b>4 326 400</b>	<b>52.57</b>
	<b>Subtotal</b>		<b>465 564</b>	<b>24 472 385</b>	<b>52.57</b>
	NB Power	Canadian Coal	Permit 91	1 951	153 220
<b>Subtotal</b>			<b>1 951</b>	<b>153 220</b>	<b>78.55</b>
Imported Coal		Permit 47	1 151	104 697	90.93
		Permit 90	1 217	112 862	92.73
		Permit 91	61 768	4 851 741	78.55
		<b>Subtotal</b>	<b>64 137</b>	<b>5 069 299</b>	<b>79.04</b>
Imported Oil		Permit 47	4 486	407 881	90.93
		Permit 90	5 945	551 250	92.73
		Permit 91	66 004	5 184 466	78.55
		<b>Subtotal</b>	<b>76 435</b>	<b>6 143 597</b>	<b>80.38</b>

Footnotes:

1. Source of production data filed by major exporters only.
2. Revenue figures are for illustrative purposes only and are strictly allocatable by energy source.



## TABLE 5 Source of Production Report <sup>1</sup> by Exporter

Exporter	Fuel Type	Authorization	MAY03		
			Energy (MW.h)	Revenue (CAN\$) <sup>2</sup>	CAN\$/MW.h <sup>2</sup>
NB Power	Natural Gas	Permit 47	10	914	90.93
		Permit 90	8	733	92.73
		Permit 91	552	43 372	78.55
		Permit 148	146 876	7 554 188	51.43
		<b>Subtotal</b>	<b>147 446</b>	<b>7 599 206</b>	<b>51.54</b>
	Nuclear	Permit 47	55	4 966	90.93
		Permit 90	22	2 082	92.73
		Permit 91	16 368	1 285 675	78.55
		<b>Subtotal</b>	<b>16 445</b>	<b>1 292 723</b>	<b>78.61</b>
	Other	Permit 47	531	48 308	90.93
		Permit 90	3 032	281 101	92.73
		Permit 91	1 744	137 013	78.55
<b>Subtotal</b>		<b>5 307</b>	<b>466 423</b>	<b>87.89</b>	
	<b>Subtotal</b>		<b>311 721</b>	<b>20 724 468</b>	<b>66.48</b>
Powerex Corp.	Other	Permit 116	6 560	432 204	65.88
		Permit 118	325 297	16 521 074	50.79
		<b>Subtotal</b>	<b>331 857</b>	<b>16 953 278</b>	<b>51.09</b>
	<b>Subtotal</b>		<b>331 857</b>	<b>16 953 278</b>	<b>51.09</b>
SPLIT ROCK	Other	Permit 221	23 020	1 048 736	45.56
		<b>Subtotal</b>	<b>23 020</b>	<b>1 048 736</b>	<b>45.56</b>
	<b>Subtotal</b>		<b>23 020</b>	<b>1 048 736</b>	<b>45.56</b>

Footnotes:

1. Source of production data filed by major exporters only.
2. Revenue figures are for illustrative purposes only and are strictly allocatable by energy source.



National Energy Board  
Office national de l'énergie

## TABLE 5 Source of Production Report <sup>1</sup> by Exporter

Page 5  
04/05/04

Exporter	Fuel Type	Authorization	MAY03		
			Energy (MW.h)	Revenue (CAN\$) <sup>2</sup>	CAN\$/MW.h <sup>2</sup>
Teck Cominco	Hydraulic	Permit 132	42 003	1 475 731	35.13
		<b>Subtotal</b>	<b>42 003</b>	<b>1 475 731</b>	<b>35.13</b>
	<b>Subtotal</b>		<b>42 003</b>	<b>1 475 731</b>	<b>35.13</b>
<b>Total All Exporters</b>			<b>2 247 131</b>	<b>122 179 555</b>	<b>54.37</b>

Footnotes:

1. Source of production data filed by major exporters only.
2. Revenue figures are for illustrative purposes only and are strictly allocatable by energy source.