



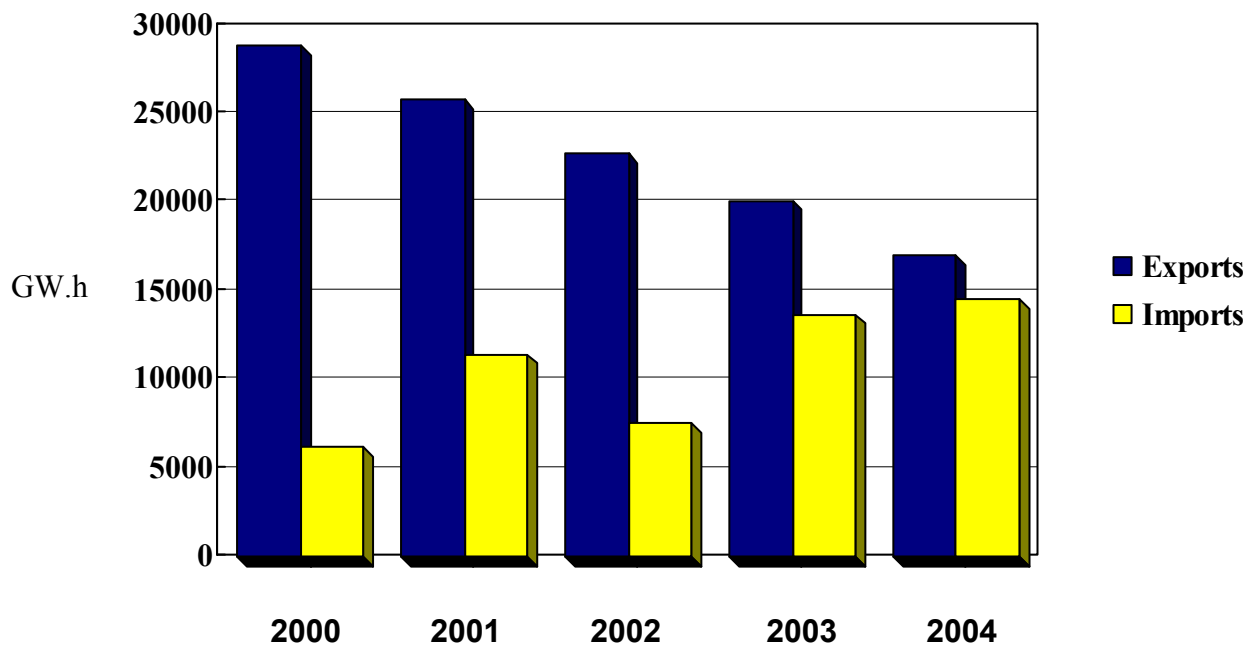
# Electricity Exports and Imports

## Monthly Statistics for

### July 2004

Exports: 4092 GW.h

Imports: 1236 GW.h



**January – July**

(Year Totals)



National Energy Board  
Office national de l'énergie

# TABLE 1

## Exports and Imports of Electricity

### Summary: Canada

#### JULY 2004

Page 1  
04/09/10

| Exchange Type                           | Energy (MW.h)    |                   | Revenue (CAN\$) <sup>1</sup> |                      | CAN\$/MW.h <sup>2</sup> |              |
|---|------------------|-------------------|------------------------------|----------------------|-------------------------|--------------|
|   | JUL04            | JAN04 - JUL04     | JUL04                        | JAN04 - JUL04        | JUL04                   | L12M         |
| <b>Exports of Electric Energy</b>       |                  |                   |                              |                      |                         |              |
| Firm                                    | 1 519 042        | 6 913 787         | 88 888 275                   | 432 982 797          | 52.86                   | 54.92        |
| Interruptible                           | 2 572 830        | 10 026 452        | 186 268 091                  | 633 876 308          | 71.53                   | 58.76        |
| Non-Revenue/Inadvertant                 | - 507 662        | -3 611 054        | 0                            | 0                    | 0.00                    | 0.00         |
| Service                                 | 38 278           | 379 620           | 920 524                      | 6 041 040            | 24.05                   | 12.12        |
| <b>Total Exports</b>                    | <b>3 622 488</b> | <b>13 708 806</b> | <b>276 076 890</b>           | <b>1 072 900 145</b> | <b>73.22</b>            | <b>69.12</b> |
| Total Sales - Firm and Interruptible    | 4 091 872        | 16 940 240        | 275 156 366                  | 1 066 859 105        | 64.60                   | 57.24        |
| <b>Imports of Electric Energy</b>       |                  |                   |                              |                      |                         |              |
| Non-Revenue/Inadvertant                 | - 476 027        | -3 811 694        | 0                            | 0                    | 0.00                    | 0.00         |
| Purchase                                | 1 235 959        | 14 533 351        | 54 667 667                   | 735 740 297          | 44.23                   | 47.53        |
| Service                                 | 18 200           | 271 175           | 18 689                       | 701 332              | 1.03                    | 7.27         |
| <b>Total Imports</b>                    | <b>778 131</b>   | <b>10 992 832</b> | <b>54 686 356</b>            | <b>736 441 629</b>   | <b>70.28</b>            | <b>60.51</b> |
| <b>Excess of Exports Over Imports</b>   | <b>2 844 356</b> | <b>2 715 974</b>  | <b>221 390 534</b>           | <b>336 458 515</b>   |                         |              |
| <b>Number of Export Licences:</b>       | <b>9</b>         |                   |                              |                      |                         |              |
| <b>Number of Export Permits/Orders:</b> | <b>173</b>       |                   |                              |                      |                         |              |
|   | <b>182</b>       |                   |                              |                      |                         |              |

Footnotes:

1. Includes capacity and energy charges.
2. Average value for the month and the last 12 months (excludes capacity charge).

F - Firm Sales  
I - Interruptible Sales  
P - Purchase (Import)  
N - Non-Revenue (Non-Revenue or Inadvertent)  
S - Service (Spinning Reserve, Storage, Unit Rental, Transmission, etc.)

*For further information, contact:*

**Mary-Jane Sam**  
**Statistical Research Officer,**  
**Commodities Business Unit**  
**National Energy Board**  
**(403) 299-3706**



## TABLE 2A Export Summary Report by Source, Authorization and Exchange Type

| Source  | Authorization | Exchange Type | Energy (MW.h) |               | Revenue (CAN\$) <sup>1</sup> |                  | CAN\$/MW.h <sup>2</sup> |              |
|---|---------------|---------------|---------------|---------------|------------------------------|------------------|-------------------------|--------------|
|   |               |               | JUL04         | JAN04 - JUL04 | JUL04                        | JAN04 - JUL04    | JUL04                   | L12M         |
| <b>Alberta</b>  |               |               |               |               |                              |                  |                         |              |
| ATCO & Alberta  | Permit 93     | I             | 105           | 505           | 5 952                        | 22 619           | 56.69                   | 44.79        |
| Candela Energy  | Permit 165    | I             | 0             | 788           | 0                            | 32 808           | 0.00                    | 41.63        |
| Enmax Marketing   | Permit 169    | I             | 5 914         | 23 976        | 335 428                      | 1 234 844        | 56.72                   | 49.90        |
| EPCOR Merchant  | Permit 186    | I             | 7 243         | 26 922        | 343 475                      | 1 194 867        | 47.42                   | 43.93        |
| Powerex Corp.   | Permit 116    | I             | 717           | 4 820         | 27 340                       | 300 693          | 38.13                   | 62.37        |
| TransCanada   | Permit 78     | I             | 0             | 8 968         | 0                            | 384 644          | 0.00                    | 42.39        |
| TransCanada Ene   |               | I             | 3 851         | 15 902        | 192 956                      | 782 783          | 50.11                   | 49.23        |
| <b>Subtotal Firm and Interruptible Exports: Alberta</b> |               |               | <b>17 830</b> | <b>81 881</b> | <b>905 150</b>               | <b>3 953 258</b> | <b>50.77</b>            | <b>46.59</b> |
| <b>British Columbia</b>                                 |               |               |               |               |                              |                  |                         |              |
| Aquila Networks   | Permit 115    | F             | 5 535         | 5 565         | 273 485                      | 275 105          | 49.41                   | 49.43        |
| BC Hydro  | Permit 105    | F             | 77            | 677           | 5 497                        | 48 480           | 71.58                   | 71.58        |
|   | Permit 127    | N             | - 372 873     | -2 993 108    | 0                            | 0                | 0.00                    | 0.00         |
|   |               | S             | 17 660        | 255 499       | 0                            | 0                | 0.00                    | 0.00         |

Footnotes:

1. Includes capacity and energy charges.
2. Average value for the month and the last 12 months (excludes capacity charge).

- F - Firm Sales
- I - Interruptible Sales
- P - Purchase (Import)
- N - Non-Revenue (Non-Revenue or Inadvertent)
- S - Service (Spinning Reserve, Storage, Unit Rental, Transmission, etc.)



## TABLE 2A

### Export Summary Report

#### by Source, Authorization and Exchange Type

| Source   | Authorization | Exchange Type | Energy (MW.h)  |                  | Revenue (CAN\$) <sup>1</sup> |                    | CAN\$/MW.h <sup>2</sup> |              |
|--|---------------|---------------|----------------|------------------|------------------------------|--------------------|-------------------------|--------------|
|  |               |               | JUL04          | JAN04 - JUL04    | JUL04                        | JAN04 - JUL04      | JUL04                   | L12M         |
| BC Hydro   | Permit 192    | N             | 744            | 177 710          | 0                            | 0                  | 0.00                    | 0.00         |
|  | Treaty        | N             | 10 729         | 183 782          | 0                            | 0                  | 0.00                    | 0.00         |
| Powerex Corp.  | Permit 118    | I             | 632 017        | 2 856 852        | 39 287 080                   | 143 068 224        | 62.16                   | 48.54        |
| Teck Cominco   | Permit 132    | F             | 0              | 104 433          | 0                            | 5 735 699          | 0.00                    | 52.06        |
|  | Permit 244    | F             | 3 796          | 577 984          | 203 902                      | 30 738 407         | 53.71                   | 53.18        |
| TransAlta Ener   | Permit 168    | F             | 2 608          | 19 133           | 131 371                      | 900 193            | 50.37                   | 46.11        |
| <b>Subtotal Firm and Interruptible Exports: British Columbia</b> |               |               | <b>644 033</b> | <b>3 564 644</b> | <b>39 901 335</b>            | <b>180 766 107</b> | <b>61.96</b>            | <b>49.17</b> |
| <b>Manitoba</b>  |               |               |                |                  |                              |                    |                         |              |
| Manitoba Hydro   | Licence 170   | F             | 297 434        | 951 267          | 12 232 225                   | 60 435 701         | 41.13                   | 76.91        |
|  | Permit 33     | F             | 66 038         | 89 038           | 2 766 753                    | 3 738 490          | 41.90                   | 42.34        |
|  | Permit 34     | F             | 48 950         | 65 950           | 2 050 828                    | 2 769 068          | 41.90                   | 42.35        |
|  | Permit 35     | F             | 50 396         | 66 236           | 4 074 111                    | 5 046 746          | 80.84                   | 66.27        |
|  | Permit 45     | F             | 104 948        | 237 698          | 7 990 646                    | 18 709 903         | 76.14                   | 88.05        |
|  | Permit 46     | I             | 279 043        | 767 541          | 20 551 688                   | 56 741 222         | 73.65                   | 75.16        |
|  |               | N             | 0              | 122 646          | 0                            | 0                  | 0.00                    | 0.00         |
|  | Permit 68     | F             | 16 765         | 54 078           | 596 139                      | 2 705 003          | 35.56                   | 55.41        |
|  | Permit 128    | F             | 437            | 4 276            | 24 035                       | 206 335            | 55.06                   | 51.39        |
|  | Permit 144    | F             | 17 543         | 52 963           | 1 566 888                    | 5 443 187          | 89.32                   | 95.80        |

Footnotes:

1. Includes capacity and energy charges.
2. Average value for the month and the last 12 months (excludes capacity charge).

- F - Firm Sales
- I - Interruptible Sales
- P - Purchase (Import)
- N - Non-Revenue (Non-Revenue or Inadvertent)
- S - Service (Spinning Reserve, Storage, Unit Rental, Transmission, etc.)



## TABLE 2A

### Export Summary Report

#### by Source, Authorization and Exchange Type

| Source  | Authorization | Exchange Type | Energy (MW.h)  |                  | Revenue (CAN\$) <sup>1</sup> |                    | CAN\$/MW.h <sup>2</sup> |              |
|---|---------------|---------------|----------------|------------------|------------------------------|--------------------|-------------------------|--------------|
|   |               |               | JUL04          | JAN04 - JUL04    | JUL04                        | JAN04 - JUL04      | JUL04                   | L12M         |
| Manitoba Hydro  | Permit 155    | F             | 21 119         | 98 939           | 1 311 189                    | 7 054 049          | 62.09                   | 79.57        |
|   | Permit 207    | F             | 35 131         | 241 716          | 2 552 509                    | 17 412 829         | 72.66                   | 71.19        |
| <b>Subtotal Firm and Interruptible Exports: Manitoba</b>      |               |               | <b>937 804</b> | <b>2 629 702</b> | <b>55 717 012</b>            | <b>180 262 532</b> | <b>59.41</b>            | <b>73.87</b> |
| <b>New Brunswick</b>  |               |               |                |                  |                              |                    |                         |              |
| Fraser Inc.   | Permit 225    | F             | 25 890         | 185 910          | 1 926 649                    | 13 410 589         | 74.42                   | 70.25        |
| NB Power  | Permit 90     | F             | 26 531         | 196 967          | 1 831 575                    | 13 528 979         | 63.40                   | 63.57        |
|   | Permit 91     | I             | 168 922        | 342 094          | 10 092 539                   | 21 352 886         | 59.75                   | 60.36        |
|   | Permit 148    | F             | 107 024        | 401 286          | 5 843 950                    | 23 984 812         | 54.60                   | 56.57        |
| WPS Power Dev.  | Licence 177   | F             | 7 322          | 58 315           | 178 938                      | 1 557 982          | 24.44                   | 35.13        |
| <b>Subtotal Firm and Interruptible Exports: New Brunswick</b> |               |               | <b>335 689</b> | <b>1 184 572</b> | <b>19 873 651</b>            | <b>73 835 248</b>  | <b>58.76</b>            | <b>59.79</b> |
| <b>Nova Scotia</b>  |               |               |                |                  |                              |                    |                         |              |
| NS Power Inc.   | Permit 122    | I             | 7 908          | 58 602           | 364 174                      | 3 286 396          | 46.05                   | 55.89        |
| <b>Subtotal Firm and Interruptible Exports: Nova Scotia</b>   |               |               | <b>7 908</b>   | <b>58 602</b>    | <b>364 174</b>               | <b>3 286 396</b>   | <b>46.05</b>            | <b>55.89</b> |

Footnotes:

1. Includes capacity and energy charges.
2. Average value for the month and the last 12 months (excludes capacity charge).

- F - Firm Sales
- I - Interruptible Sales
- P - Purchase (Import)
- N - Non-Revenue (Non-Revenue or Inadvertent)
- S - Service (Spinning Reserve, Storage, Unit Rental, Transmission, etc.)



## TABLE 2A

### Export Summary Report

#### by Source, Authorization and Exchange Type

| Source          | Authorization | Exchange Type | Energy (MW.h) |               | Revenue (CAN\$) <sup>1</sup> |               | CAN\$/MW.h <sup>2</sup> |       |
|-----------------|---------------|---------------|---------------|---------------|------------------------------|---------------|-------------------------|-------|
|                 |               |               | JUL04         | JAN04 - JUL04 | JUL04                        | JAN04 - JUL04 | JUL04                   | L12M  |
| <b>Ontario</b>  |               |               |               |               |                              |               |                         |       |
| Abitibi         | Permit 75     | I             | 0             | 287           | 0                            | 16 759        | 0.00                    | 59.42 |
| Brascan         | Permit 112    | F             | 88 322        | 519 020       | 6 497 170                    | 32 025 737    | 73.56                   | 58.57 |
| Cargill Trading | Permit 204    | F             | 10 973        | 31 303        | 644 917                      | 1 742 756     | 58.77                   | 52.99 |
| Conectiv Energy | Permit 212    | I             | 61 771        | 124 874       | 2 946 624                    | 6 138 511     | 47.70                   | 49.96 |
| Constellation   | Permit 138    | I             | 36 304        | 366 900       | 1 810 614                    | 16 219 743    | 49.87                   | 43.49 |
| Coral Energy    | Permit 174    | F             | 46 302        | 216 305       | 2 178 148                    | 10 353 318    | 47.04                   | 48.22 |
| D&W Subway      | Permit 26     | F             | 240           | 1 311         | 0                            | 0             | 0.00                    | 0.00  |
| Direct Commod.  | Permit 240    | I             | 2 612         | 48 362        | 167 237                      | 2 959 279     | 64.03                   | 60.80 |
| Direct EM Inc.  | Permit 200    | F             | 1 750         | 1 810         | 116 533                      | 119 903       | 66.59                   | 66.25 |
| DTE Energy Trad | Permit 206    | F             | 102 235       | 591 709       | 4 900 427                    | 20 171 116    | 47.93                   | 36.92 |
| Entergy-Koch    | Permit 227    | F             | 300           | 300           | 20 329                       | 20 329        | 67.76                   | 67.76 |
| EPCOR Merchant  | Permit 187    | F             | 67 295        | 296 657       | 2 699 141                    | 11 997 692    | 40.11                   | 40.64 |
| Hydro One Net   | Permit 25     | F             | 0             | 19            | 0                            | 913           | 0.00                    | 44.82 |

Footnotes:

1. Includes capacity and energy charges.
2. Average value for the month and the last 12 months (excludes capacity charge).

- F - Firm Sales
- I - Interruptible Sales
- P - Purchase (Import)
- N - Non-Revenue (Non-Revenue or Inadvertent)
- S - Service (Spinning Reserve, Storage, Unit Rental, Transmission, etc.)



## TABLE 2A Export Summary Report by Source, Authorization and Exchange Type

| Source  | Authorization | Exchange Type | Energy (MW.h)  |                  | Revenue (CAN\$) <sup>1</sup> |                    | CAN\$/MW.h <sup>2</sup> |              |
|---|---------------|---------------|----------------|------------------|------------------------------|--------------------|-------------------------|--------------|
|   |               |               | JUL04          | JAN04 - JUL04    | JUL04                        | JAN04 - JUL04      | JUL04                   | L12M         |
| Ind Elc Mark Op   | Permit 22     | N             | - 146 262      | -1 102 084       | 0                            | 0                  | 0.00                    | 0.00         |
| Morgan Stanley  | Permit 181    | F             | 800            | 6 791            | 37 213                       | 264 134            | 46.52                   | 38.79        |
| Northern States   | Permit 235    | F             | 0              | 1 401            | 0                            | 3 233              | 0.00                    | 2.31         |
| Ont Power Gen   | Permit 24     | F             | 13             | 123              | 26                           | 243                | 2.03                    | 1.99         |
| OPGI/OHIM   | Permit 21     | I             | 248 392        | 1 580 532        | 13 406 668                   | 85 982 589         | 52.85                   | 51.21        |
|   |               | S             | 20 618         | 124 121          | 920 524                      | 6 041 040          | 44.65                   | 36.19        |
| Powerex Corp.   | Permit 116    | I             | 78 828         | 417 006          | 4 136 922                    | 22 867 471         | 52.48                   | 54.62        |
| Sempra Corp   | Permit 157    | F             | 11 503         | 50 675           | 520 475                      | 2 902 953          | 45.25                   | 51.93        |
| SPLIT ROCK  | Permit 221    | F             | 36 486         | 160 838          | 1 624 150                    | 8 497 783          | 44.51                   | 53.87        |
| TransAlta Ener  | Permit 168    | F             | 86 015         | 424 722          | 3 849 702                    | 20 423 861         | 44.76                   | 48.09        |
| TransCanada PM  | Permit 185    | F             | 9 721          | 12 166           | 386 626                      | 434 711            | 39.77                   | 35.73        |
| <b>Subtotal Firm and Interruptible Exports: Ontario</b> |               |               | <b>889 862</b> | <b>4 853 112</b> | <b>45 942 921</b>            | <b>243 143 032</b> | <b>51.31</b>            | <b>48.69</b> |
| <b>Quebec</b>   |               |               |                |                  |                              |                    |                         |              |
| Brascan   | Permit 112    | F             | 74 918         | 195 398          | 6 169 265                    | 14 573 456         | 82.35                   | 62.70        |

Footnotes:

1. Includes capacity and energy charges.
2. Average value for the month and the last 12 months (excludes capacity charge).

- F - Firm Sales
- I - Interruptible Sales
- P - Purchase (Import)
- N - Non-Revenue (Non-Revenue or Inadvertent)
- S - Service (Spinning Reserve, Storage, Unit Rental, Transmission, etc.)



## TABLE 2A

### Export Summary Report

#### by Source, Authorization and Exchange Type

| Source   | Authorization | Exchange Type | Energy (MW.h)    |                   | Revenue (CAN\$) <sup>1</sup> |                      | CAN\$/MW.h <sup>2</sup> |              |
|--|---------------|---------------|------------------|-------------------|------------------------------|----------------------|-------------------------|--------------|
|  |               |               | JUL04            | JAN04 - JUL04     | JUL04                        | JAN04 - JUL04        | JUL04                   | L12M         |
| Hydro-Quebec   | Licence 180   | F             | 80 975           | 558 034           | 7 743 444                    | 54 388 606           | 36.25                   | 36.44        |
|  | Licence 181   | F             | 15 108           | 98 278            | 1 318 099                    | 9 046 807            | 36.25                   | 36.49        |
|  | Licence 182   | F             | 12 820           | 87 637            | 1 158 118                    | 8 109 231            | 36.25                   | 36.46        |
|  | Licence 183   | F             | 20 855           | 145 377           | 2 045 647                    | 14 435 358           | 36.25                   | 36.48        |
|  | Licence 184   | F             | 14 868           | 100 925           | 1 418 155                    | 9 909 874            | 36.25                   | 36.46        |
|  | Permit 20     | F             | 0                | 557               | 0                            | 39 312               | 0.00                    | 72.62        |
|  | Permit 64     | I             | 824 034          | 1 903 349         | 80 189 101                   | 189 652 695          | 94.99                   | 83.64        |
|  | Permit 65     | F             | 0                | 0                 | 0                            | - 180 084            | 0.00                    | 0.00         |
| MEHQ   | Permit 129    | I             | 151 455          | 1 013 613         | 7 392 718                    | 52 601 509           | 48.81                   | 51.34        |
| <b>Subtotal Firm and Interruptible Exports: Quebec</b>       |               |               | <b>1 195 033</b> | <b>4 103 168</b>  | <b>107 434 547</b>           | <b>352 576 766</b>   | <b>81.24</b>            | <b>63.75</b> |
| <b>Saskatchewan</b>  |               |               |                  |                   |                              |                      |                         |              |
| Northpoint   | Permit 88     | I             | 63 686           | 464 487           | 5 016 581                    | 29 034 433           | 78.09                   | 62.82        |
| Powerex Corp.  | Permit 116    | I             | 28               | 72                | 995                          | 1 334                | 35.54                   | 17.78        |
| <b>Subtotal Firm and Interruptible Exports: Saskatchewan</b> |               |               | <b>63 714</b>    | <b>464 559</b>    | <b>5 017 576</b>             | <b>29 035 767</b>    | <b>78.07</b>            | <b>62.82</b> |
| <b>Total Firm and Interruptible Exports:</b>                 |               |               | <b>4 091 872</b> | <b>16 940 240</b> | <b>275 156 366</b>           | <b>1 066 859 105</b> | <b>64.60</b>            | <b>57.24</b> |

Footnotes:

1. Includes capacity and energy charges.
2. Average value for the month and the last 12 months (excludes capacity charge).

- F - Firm Sales
- I - Interruptible Sales
- P - Purchase (Import)
- N - Non-Revenue (Non-Revenue or Inadvertent)
- S - Service (Spinning Reserve, Storage, Unit Rental, Transmission, etc.)





## TABLE 2B

### Import Summary Report

#### by Destination, Authorization and Exchange Type

| Destination                                | Authorization | Exchange Type | Energy (MW.h) |                | Revenue (CAN\$) <sup>1</sup> |                   | CAN\$/MW.h <sup>2</sup> |              |
|--|---------------|---------------|---------------|----------------|------------------------------|-------------------|-------------------------|--------------|
|  |               |               | JUL04         | JAN04 - JUL04  | JUL04                        | JAN04 - JUL04     | JUL04                   | L12M         |
| <b>Alberta</b>                             |               |               |               |                |                              |                   |                         |              |
| Candela Energy                             | -             | P             | 345           | 1 710          | 22 989                       | 127 972           | 66.63                   | 74.84        |
| Cargill Trading                            |               | P             | 0             | 25             | 0                            | 1 489             | 0.00                    | 73.89        |
| Enmax Marketing                            |               | P             | 4 348         | 93 981         | 293 296                      | 5 126 668         | 67.46                   | 55.53        |
| EPCOR Merchant                             |               | P             | 7 290         | 78 070         | 559 249                      | 4 416 015         | 76.71                   | 55.74        |
| TransCanada                                |               | P             | 0             | 10 178         | 0                            | 516 502           | 0.00                    | 52.00        |
| TransCanada Ene                            |               | P             | 2 507         | 11 838         | 173 262                      | 681 622           | 69.11                   | 57.58        |
| <b>Subtotal Purchased Imports: Alberta</b> |               |               | <b>14 490</b> | <b>195 802</b> | <b>1 048 796</b>             | <b>10 870 268</b> | <b>72.38</b>            | <b>55.73</b> |
| <b>British Columbia</b>                    |               |               |               |                |                              |                   |                         |              |
| Aquila Networks                            |               | P             | 0             | 5 778          | 0                            | 440 043           | 0.00                    | 66.20        |
| Avista Energy                              |               | P             | 0             | 2              | 0                            | 40                | 0.00                    | 19.80        |
| BC Hydro                                   |               | N             | - 320 540     | -2 707 293     | 0                            | 0                 | 0.00                    | 0.00         |
|  |               | S             | 17 660        | 255 499        | 0                            | 0                 | 0.00                    | 0.00         |
| Powerex Corp.                              |               | P             | 420 716       | 4 309 654      | 17 783 012                   | 156 844 499       | 42.27                   | 35.87        |

Footnotes:

1. Includes capacity and energy charges.
2. Average value for the month and the last 12 months (excludes capacity charge).

- F - Firm Sales
- I - Interruptible Sales
- P - Purchase (Import)
- N - Non-Revenue (Non-Revenue or Inadvertent)
- S - Service (Spinning Reserve, Storage, Unit Rental, Transmission, etc.)



## TABLE 2B

### Import Summary Report

#### by Destination, Authorization and Exchange Type

| Destination   | Authorization | Exchange Type | Energy (MW.h)  |                  | Revenue (CAN\$) <sup>1</sup> |                    | CAN\$/MW.h <sup>2</sup> |              |
|---|---------------|---------------|----------------|------------------|------------------------------|--------------------|-------------------------|--------------|
|   |               |               | JUL04          | JAN04 - JUL04    | JUL04                        | JAN04 - JUL04      | JUL04                   | L12M         |
| Teck Cominco  | -             | P             | 0              | 81 565           | 0                            | 4 194 946          | 0.00                    | 50.81        |
| TransAlta Ener                                      |               | P             | 1 660          | 6 700            | 89 996                       | 339 386            | 54.21                   | 53.72        |
| <b>Subtotal Purchased Imports: British Columbia</b> |               |               | <b>422 376</b> | <b>4 403 699</b> | <b>17 873 008</b>            | <b>161 818 913</b> | <b>42.32</b>            | <b>36.55</b> |
| <b>Manitoba</b>                                     |               |               |                |                  |                              |                    |                         |              |
| Manitoba Hydro                                      |               | N             | 309            | 5 897            | 0                            | 0                  | 0.00                    | 0.00         |
|   |               | P             | 65 334         | 2 223 205        | 5 238 913                    | 147 643 366        | 80.19                   | 53.35        |
| <b>Subtotal Purchased Imports: Manitoba</b>         |               |               | <b>65 334</b>  | <b>2 223 205</b> | <b>5 238 913</b>             | <b>147 643 366</b> | <b>80.19</b>            | <b>53.35</b> |
| <b>New Brunswick</b>                                |               |               |                |                  |                              |                    |                         |              |
| NB Power  |               | P             | 0              | 20 543           | 0                            | 2 281 972          | 0.00                    | 74.75        |
| WPS Power Dev.                                      |               | P             | 3 660          | 3 784            | 89 450                       | 92 623             | 24.44                   | 31.11        |
| <b>Subtotal Purchased Imports: New Brunswick</b>    |               |               | <b>3 660</b>   | <b>24 327</b>    | <b>89 450</b>                | <b>2 374 595</b>   | <b>24.44</b>            | <b>71.72</b> |
| <b>Nova Scotia</b>                                  |               |               |                |                  |                              |                    |                         |              |
| NS Power Inc.                                       |               | P             | 275            | 7 088            | 13 341                       | 581 759            | 48.51                   | 84.27        |
| <b>Subtotal Purchased Imports: Nova Scotia</b>      |               |               | <b>275</b>     | <b>7 088</b>     | <b>13 341</b>                | <b>581 759</b>     | <b>48.51</b>            | <b>84.27</b> |

Footnotes:

1. Includes capacity and energy charges.
2. Average value for the month and the last 12 months (excludes capacity charge).

- F - Firm Sales
- I - Interruptible Sales
- P - Purchase (Import)
- N - Non-Revenue (Non-Revenue or Inadvertent)
- S - Service (Spinning Reserve, Storage, Unit Rental, Transmission, etc.)



## TABLE 2B

### Import Summary Report

#### by Destination, Authorization and Exchange Type

| Destination     | Authorization | Exchange Type | Energy (MW.h) |               | Revenue (CAN\$) <sup>1</sup> |               | CAN\$/MW.h <sup>2</sup> |       |
|-----------------|---------------|---------------|---------------|---------------|------------------------------|---------------|-------------------------|-------|
|                 |               |               | JUL04         | JAN04 - JUL04 | JUL04                        | JAN04 - JUL04 | JUL04                   | L12M  |
| <b>Ontario</b>  |               |               |               |               |                              |               |                         |       |
| Abitibi         | -             | P             | 0             | 17            | 0                            | 993           | 0.00                    | 58.39 |
| Brascan         |               | P             | 5 499         | 240 345       | 510 608                      | 17 636 701    | 92.85                   | 65.11 |
| Cargill Trading |               | P             | 32 878        | 491 028       | 1 532 700                    | 24 825 676    | 46.62                   | 48.95 |
| Conectiv Energy |               | P             | 7 577         | 264 438       | 374 968                      | 16 412 581    | 49.49                   | 55.57 |
| Constellation   |               | P             | 100           | 41 553        | 3 657                        | 4 232 617     | 36.57                   | 85.23 |
| Coral Energy    |               | P             | 21 110        | 43 408        | 924 777                      | 2 400 472     | 43.81                   | 57.20 |
| D&W Subway      |               | P             | 157           | 1 158         | 0                            | 0             | 0.00                    | 0.00  |
| Direct Commod.  |               | P             | 274           | 24 785        | 23 289                       | 1 945 824     | 85.00                   | 76.64 |
| Direct EM Inc.  |               | P             | 0             | 5             | 0                            | 461           | 0.00                    | 92.27 |
| DTE Energy Trad |               | P             | 126 425       | 1 058 662     | 5 313 547                    | 51 170 473    | 42.03                   | 46.05 |
| Entergy-Koch    |               | P             | 25 914        | 25 914        | 1 255 022                    | 1 255 022     | 48.43                   | 48.43 |
| EPCOR Merchant  |               | P             | 900           | 18 104        | 65 174                       | 1 511 067     | 72.42                   | 72.24 |
| Ind Elc Mark Op |               | N             | - 155 796     | -1 110 298    | 0                            | 0             | 0.00                    | 0.00  |

Footnotes:

1. Includes capacity and energy charges.
2. Average value for the month and the last 12 months (excludes capacity charge).

- F - Firm Sales
- I - Interruptible Sales
- P - Purchase (Import)
- N - Non-Revenue (Non-Revenue or Inadvertent)
- S - Service (Spinning Reserve, Storage, Unit Rental, Transmission, etc.)



## TABLE 2B

### Import Summary Report

#### by Destination, Authorization and Exchange Type

| Destination                                | Authorization | Exchange Type | Energy (MW.h)  |                  | Revenue (CAN\$) <sup>1</sup> |                    | CAN\$/MW.h <sup>2</sup> |              |
|--|---------------|---------------|----------------|------------------|------------------------------|--------------------|-------------------------|--------------|
|  |               |               | JUL04          | JAN04 - JUL04    | JUL04                        | JAN04 - JUL04      | JUL04                   | L12M         |
| Manitoba Hydro                             | -             | P             | 46 641         | 124 555          | 1 121 447                    | 4 523 202          | 24.04                   | 36.31        |
| Morgan Stanley                             |               | P             | 143            | 6 755            | 11 982                       | 923 245            | 83.80                   | 106.58       |
| Northern States                            |               | P             | 587            | 783              | 35 324                       | 46 931             | 60.18                   | 59.96        |
| OPGI/OHIM                                  |               | P             | 61 542         | 671 514          | 2 278 252                    | 30 719 988         | 37.02                   | 42.03        |
|  |               | S             | 540            | 15 676           | 18 689                       | 701 332            | 34.61                   | 32.53        |
| Powerex Corp.                              |               | P             | 33 644         | 98 795           | 913 664                      | 4 907 497          | 27.16                   | 50.57        |
| Sempra Corp                                |               | P             | 100            | 20 449           | 7 516                        | 1 092 429          | 75.16                   | 53.85        |
| SPLIT ROCK                                 |               | P             | 45 976         | 352 483          | 1 644 950                    | 16 800 580         | 35.78                   | 44.74        |
| TransAlta Ener                             |               | P             | 86 032         | 431 790          | 3 853 597                    | 19 511 933         | 44.79                   | 45.19        |
| TransCanada PM                             |               | P             | 0              | 1 361            | 0                            | 186 979            | 0.00                    | 115.81       |
| <b>Subtotal Purchased Imports: Ontario</b> |               |               | <b>495 499</b> | <b>3 917 902</b> | <b>19 870 472</b>            | <b>200 104 671</b> | <b>40.10</b>            | <b>48.15</b> |
| <b>Quebec</b>                              |               |               |                |                  |                              |                    |                         |              |
| Brascan                                    |               | P             | 0              | 15 044           | 0                            | 1 017 097          | 0.00                    | 67.61        |
| Hydro-Quebec                               |               | P             | 127 543        | 2 864 907        | 5 544 417                    | 168 179 133        | 43.47                   | 53.87        |

Footnotes:

1. Includes capacity and energy charges.
2. Average value for the month and the last 12 months (excludes capacity charge).

- F - Firm Sales
- I - Interruptible Sales
- P - Purchase (Import)
- N - Non-Revenue (Non-Revenue or Inadvertent)
- S - Service (Spinning Reserve, Storage, Unit Rental, Transmission, etc.)



National Energy Board  
Office national de l'énergie

## TABLE 2B

### Import Summary Report

#### by Destination, Authorization and Exchange Type

Page 11  
04/09/10

| Destination                                     | Authorization | Exchange Type | Energy (MW.h)    |                   | Revenue (CAN\$) <sup>1</sup> |                    | CAN\$/MW.h <sup>2</sup> |              |
|---|---------------|---------------|------------------|-------------------|------------------------------|--------------------|-------------------------|--------------|
|   |               |               | JUL04            | JAN04 - JUL04     | JUL04                        | JAN04 - JUL04      | JUL04                   | L12M         |
| MEHQ  | -             | P             | 9 852            | 210 651           | 1 133 804                    | 16 839 487         | 115.08                  | 70.13        |
| <b>Subtotal Purchased Imports: Quebec</b>       |               |               | <b>137 395</b>   | <b>3 090 602</b>  | <b>6 678 222</b>             | <b>186 035 717</b> | <b>48.61</b>            | <b>55.44</b> |
| <b>Saskatchewan</b>                             |               |               |                  |                   |                              |                    |                         |              |
| Northpoint                                      |               | P             | 96 930           | 670 727           | 3 855 466                    | 26 311 009         | 39.78                   | 37.74        |
| <b>Subtotal Purchased Imports: Saskatchewan</b> |               |               | <b>96 930</b>    | <b>670 727</b>    | <b>3 855 466</b>             | <b>26 311 009</b>  | <b>39.78</b>            | <b>37.74</b> |
| <b>Total Purchased Imports:</b>                 |               |               | <b>1 235 959</b> | <b>14 533 351</b> | <b>54 667 667</b>            | <b>735 740 297</b> | <b>44.23</b>            | <b>47.53</b> |

Footnotes:

1. Includes capacity and energy charges.
2. Average value for the month and the last 12 months (excludes capacity charge).

- F - Firm Sales
- I - Interruptible Sales
- P - Purchase (Import)
- N - Non-Revenue (Non-Revenue or Inadvertent)
- S - Service (Spinning Reserve, Storage, Unit Rental, Transmission, etc.)



National Energy Board  
Office national de l'énergie

## TABLE 3A

### Export Sales Summary Report by Destination and Source

Page 1  
04/09/10

| Destination                         | Source           | Energy (MW.h)  |                  | Revenue (CAN\$) <sup>1</sup> |                    | CAN\$/MW.h <sup>2</sup> |              |
|-------------------------------------|------------------|----------------|------------------|------------------------------|--------------------|-------------------------|--------------|
|                                     |                  | JUL04          | JAN04 - JUL04    | JUL04                        | JAN04 - JUL04      | JUL04                   | L12M         |
| <b>Alaska</b>                       | British Columbia | 77             | 677              | 5 497                        | 48 480             | 71.58                   | 71.58        |
| <b>Subtotal Exports: Alaska</b>     |                  | <b>77</b>      | <b>677</b>       | <b>5 497</b>                 | <b>48 480</b>      | <b>71.58</b>            | <b>71.58</b> |
| <b>Arizona</b>                      | British Columbia | 8 855          | 114 741          | 773 245                      | 7 564 055          | 87.32                   | 67.10        |
| <b>Subtotal Exports: Arizona</b>    |                  | <b>8 855</b>   | <b>114 741</b>   | <b>773 245</b>               | <b>7 564 055</b>   | <b>87.32</b>            | <b>67.10</b> |
| <b>California</b>                   | British Columbia | 26 306         | 90 632           | 1 961 493                    | 5 517 817          | 74.56                   | 59.47        |
|                                     | Saskatchewan     | 0              | 1                | 0                            | 21                 | 0.00                    | 21.00        |
| <b>Subtotal Exports: California</b> |                  | <b>26 306</b>  | <b>90 633</b>    | <b>1 961 493</b>             | <b>5 517 838</b>   | <b>74.56</b>            | <b>59.47</b> |
| <b>Colorado</b>                     | British Columbia | 2 126          | 14 647           | 161 809                      | 869 328            | 76.11                   | 58.34        |
| <b>Subtotal Exports: Colorado</b>   |                  | <b>2 126</b>   | <b>14 647</b>    | <b>161 809</b>               | <b>869 328</b>     | <b>76.11</b>            | <b>58.34</b> |
| <b>Idaho</b>                        | British Columbia | 3 146          | 26 546           | 231 400                      | 2 036 298          | 73.55                   | 76.45        |
| <b>Subtotal Exports: Idaho</b>      |                  | <b>3 146</b>   | <b>26 546</b>    | <b>231 400</b>               | <b>2 036 298</b>   | <b>73.55</b>            | <b>76.45</b> |
| <b>Illinois</b>                     | Alberta          | 667            | 667              | 27 340                       | 27 340             | 40.99                   | 40.99        |
|                                     | Saskatchewan     | 22             | 22               | 995                          | 995                | 45.23                   | 45.23        |
| <b>Subtotal Exports: Illinois</b>   |                  | <b>689</b>     | <b>689</b>       | <b>28 335</b>                | <b>28 335</b>      | <b>41.12</b>            | <b>41.12</b> |
| <b>Maine</b>                        | New Brunswick    | 335 689        | 1 184 572        | 19 873 651                   | 73 835 248         | 59.20                   | 59.79        |
|                                     | Nova Scotia      | 7 908          | 58 602           | 364 174                      | 3 286 396          | 46.05                   | 55.89        |
|                                     | Quebec           | 151 455        | 1 013 613        | 7 392 718                    | 52 601 509         | 48.81                   | 51.34        |
| <b>Subtotal Exports: Maine</b>      |                  | <b>495 052</b> | <b>2 256 787</b> | <b>27 630 542</b>            | <b>129 723 153</b> | <b>55.81</b>            | <b>56.48</b> |
| <b>Michigan</b>                     | Alberta          | 50             | 462              | 0                            | 0                  | 0.00                    | 0.00         |
|                                     | Ontario          | 211 311        | 1 110 272        | 9 988 103                    | 45 994 024         | 47.27                   | 41.59        |
|                                     | Saskatchewan     | 6              | 47               | 0                            | 189                | 0.00                    | 3.78         |
| <b>Subtotal Exports: Michigan</b>   |                  | <b>211 367</b> | <b>1 110 781</b> | <b>9 988 103</b>             | <b>45 994 213</b>  | <b>47.25</b>            | <b>41.58</b> |

Footnotes:

1. Includes capacity and energy charges.
2. Average value for the month and the last 12 months (excludes capacity charge).



National Energy Board  
Office national de l'énergie

## TABLE 3A

### Export Sales Summary Report by Destination and Source

Page 2  
04/09/10

| Destination                           | Source           | Energy (MW.h)    |                  | Revenue (CAN\$) <sup>1</sup> |                    | CAN\$/MW.h <sup>2</sup> |              |
|---------------------------------------|------------------|------------------|------------------|------------------------------|--------------------|-------------------------|--------------|
|                                       |                  | JUL04            | JAN04 - JUL04    | JUL04                        | JAN04 - JUL04      | JUL04                   | L12M         |
| <b>Minnesota</b>                      | Manitoba         | 27 618           | 71 940           | 1 039 260                    | 3 558 269          | 37.63                   | 49.46        |
|                                       | Ontario          | 21 334           | 185 824          | 1 950 958                    | 12 887 934         | 91.45                   | 63.45        |
| <b>Subtotal Exports: Minnesota</b>    |                  | <b>48 952</b>    | <b>257 764</b>   | <b>2 990 217</b>             | <b>16 446 203</b>  | <b>61.08</b>            | <b>60.53</b> |
| <b>Montana</b>                        | British Columbia | 16 041           | 22 269           | 1 000 640                    | 1 413 089          | 62.38                   | 64.53        |
| <b>Subtotal Exports: Montana</b>      |                  | <b>16 041</b>    | <b>22 269</b>    | <b>1 000 640</b>             | <b>1 413 089</b>   | <b>62.38</b>            | <b>64.53</b> |
| <b>ND/Minn</b>                        | Manitoba         | 910 186          | 2 557 762        | 54 677 753                   | 176 704 263        | 60.07                   | 74.38        |
| <b>Subtotal Exports: ND/Minn</b>      |                  | <b>910 186</b>   | <b>2 557 762</b> | <b>54 677 753</b>            | <b>176 704 263</b> | <b>60.07</b>            | <b>74.38</b> |
| <b>Nevada</b>                         | British Columbia | 27 799           | 146 188          | 2 469 351                    | 10 791 571         | 88.83                   | 73.13        |
| <b>Subtotal Exports: Nevada</b>       |                  | <b>27 799</b>    | <b>146 188</b>   | <b>2 469 351</b>             | <b>10 791 571</b>  | <b>88.83</b>            | <b>73.13</b> |
| <b>New England</b>                    | Ontario          | 0                | 4 144            | 0                            | 231 385            | 0.00                    | 55.59        |
|                                       | Quebec           | 375 988          | 551 896          | 36 450 584                   | 47 661 106         | 96.95                   | 82.56        |
| <b>Subtotal Exports: New England</b>  |                  | <b>375 988</b>   | <b>556 040</b>   | <b>36 450 584</b>            | <b>47 892 491</b>  | <b>96.95</b>            | <b>82.24</b> |
| <b>New Mexico</b>                     | British Columbia | 5 176            | 21 585           | 410 220                      | 1 598 655          | 79.25                   | 71.02        |
| <b>Subtotal Exports: New Mexico</b>   |                  | <b>5 176</b>     | <b>21 585</b>    | <b>410 220</b>               | <b>1 598 655</b>   | <b>79.25</b>            | <b>71.02</b> |
| <b>New York</b>                       | Ontario          | 648 401          | 3 486 490        | 33 502 297                   | 179 796 187        | 51.67                   | 49.92        |
|                                       | Quebec           | 521 189          | 1 531 639        | 49 764 741                   | 155 038 354        | 95.48                   | 81.11        |
| <b>Subtotal Exports: New York</b>     |                  | <b>1 169 590</b> | <b>5 018 129</b> | <b>83 267 038</b>            | <b>334 834 542</b> | <b>71.19</b>            | <b>62.44</b> |
| <b>North Dakota</b>                   | Saskatchewan     | 63 686           | 464 487          | 5 016 581                    | 29 034 433         | 78.77                   | 62.82        |
| <b>Subtotal Exports: North Dakota</b> |                  | <b>63 686</b>    | <b>464 487</b>   | <b>5 016 581</b>             | <b>29 034 433</b>  | <b>78.77</b>            | <b>62.82</b> |
| <b>Oregon</b>                         | Alberta          | 148              | 183              | 9 076                        | 10 331             | 61.33                   | 52.41        |

Footnotes:

1. Includes capacity and energy charges.
2. Average value for the month and the last 12 months (excludes capacity charge).



National Energy Board  
Office national de l'énergie

## TABLE 3A

### Export Sales Summary Report by Destination and Source

Page 3  
04/09/10

| Destination                           | Source           | Energy (MW.h)    |                   | Revenue (CAN\$) <sup>1</sup> |                      | CAN\$/MW.h <sup>2</sup> |              |
|---------------------------------------|------------------|------------------|-------------------|------------------------------|----------------------|-------------------------|--------------|
|                                       |                  | JUL04            | JAN04 - JUL04     | JUL04                        | JAN04 - JUL04        | JUL04                   | L12M         |
| <b>Oregon</b>                         | British Columbia | 247 888          | 1 574 941         | 17 819 603                   | 85 414 040           | 71.89                   | 53.65        |
| <b>Subtotal Exports: Oregon</b>       |                  | <b>248 036</b>   | <b>1 575 124</b>  | <b>17 828 680</b>            | <b>85 424 372</b>    | <b>71.88</b>            | <b>53.65</b> |
| <b>Pennsylvania</b>                   | Alberta          | 0                | 3 491             | 0                            | 260 264              | 0.00                    | 74.55        |
|                                       | Ontario          | 8 816            | 66 381            | 501 563                      | 4 233 502            | 56.89                   | 63.59        |
| <b>Subtotal Exports: Pennsylvania</b> |                  | <b>8 816</b>     | <b>69 872</b>     | <b>501 563</b>               | <b>4 493 766</b>     | <b>56.89</b>            | <b>64.13</b> |
| <b>Tennessee</b>                      | Saskatchewan     | 0                | 2                 | 0                            | 129                  | 0.00                    | 64.41        |
| <b>Subtotal Exports: Tennessee</b>    |                  | <b>0</b>         | <b>2</b>          | <b>0</b>                     | <b>129</b>           | <b>0.00</b>             | <b>64.41</b> |
| <b>Utah</b>                           | British Columbia | 3 976            | 6 512             | 374 546                      | 574 853              | 94.20                   | 87.49        |
| <b>Subtotal Exports: Utah</b>         |                  | <b>3 976</b>     | <b>6 512</b>      | <b>374 546</b>               | <b>574 853</b>       | <b>94.20</b>            | <b>87.49</b> |
| <b>Vermont</b>                        | Quebec           | 146 401          | 1 006 020         | 13 826 505                   | 97 275 797           | 94.44                   | 37.41        |
| <b>Subtotal Exports: Vermont</b>      |                  | <b>146 401</b>   | <b>1 006 020</b>  | <b>13 826 505</b>            | <b>97 275 797</b>    | <b>94.44</b>            | <b>37.41</b> |
| <b>Washington</b>                     | Alberta          | 16 965           | 77 078            | 868 735                      | 3 655 322            | 51.21                   | 45.91        |
|                                       | British Columbia | 300 335          | 1 532 674         | 14 463 346                   | 63 797 549           | 48.16                   | 39.87        |
| <b>Subtotal Exports: Washington</b>   |                  | <b>317 300</b>   | <b>1 609 752</b>  | <b>15 332 081</b>            | <b>67 452 871</b>    | <b>48.32</b>            | <b>40.08</b> |
| <b>Wyoming</b>                        | British Columbia | 2 308            | 13 232            | 230 184                      | 1 140 372            | 99.73                   | 84.44        |
| <b>Subtotal Exports: Wyoming</b>      |                  | <b>2 308</b>     | <b>13 232</b>     | <b>230 184</b>               | <b>1 140 372</b>     | <b>99.73</b>            | <b>84.44</b> |
| <b>Total Exports</b>                  |                  | <b>4 091 872</b> | <b>16 940 240</b> | <b>275 156 366</b>           | <b>1 066 859 105</b> | <b>67.24</b>            | <b>57.24</b> |

Footnotes:

1. Includes capacity and energy charges.
2. Average value for the month and the last 12 months (excludes capacity charge).





National Energy Board  
Office national de l'énergie

## TABLE 3B

### Import Purchases Summary Report by Source and Destination

Page 4  
04/09/10

| Source                                | Destination   | Energy (MW.h)  |                  | Revenue (CAN\$) <sup>1</sup> |                    | CAN\$/MW.h <sup>2</sup> |              |
|---------------------------------------|---------------|----------------|------------------|------------------------------|--------------------|-------------------------|--------------|
|                                       |               | JUL04          | JAN04 - JUL04    | JUL04                        | JAN04 - JUL04      | JUL04                   | L12M         |
| <b>Illinois</b>                       | Ontario       | 322            | 9 386            | 28 206                       | 653 376            | 87.60                   | 60.17        |
| <b>Subtotal Imports: Illinois</b>     |               | <b>322</b>     | <b>9 386</b>     | <b>28 206</b>                | <b>653 376</b>     | <b>87.60</b>            | <b>60.17</b> |
| <b>Maine</b>                          | New Brunswick | 3 660          | 24 327           | 89 450                       | 2 374 595          | 24.44                   | 71.72        |
|                                       | Quebec        | 9 852          | 210 651          | 1 133 804                    | 16 839 487         | 115.08                  | 70.13        |
| <b>Subtotal Imports: Maine</b>        |               | <b>13 512</b>  | <b>234 978</b>   | <b>1 223 255</b>             | <b>19 214 082</b>  | <b>90.53</b>            | <b>70.37</b> |
| <b>Michigan</b>                       | Ontario       | 333 762        | 2 617 586        | 13 014 785                   | 121 528 863        | 38.99                   | 43.94        |
| <b>Subtotal Imports: Michigan</b>     |               | <b>333 762</b> | <b>2 617 586</b> | <b>13 014 785</b>            | <b>121 528 863</b> | <b>38.99</b>            | <b>43.94</b> |
| <b>Minnesota</b>                      | Alberta       | 0              | 25               | 0                            | 1 489              | 0.00                    | 73.89        |
|                                       | Ontario       | 70 298         | 645 263          | 2 910 941                    | 32 436 191         | 41.41                   | 47.89        |
| <b>Subtotal Imports: Minnesota</b>    |               | <b>70 298</b>  | <b>645 288</b>   | <b>2 910 941</b>             | <b>32 437 680</b>  | <b>41.41</b>            | <b>47.95</b> |
| <b>Montana</b>                        | Alberta       | 0              | 370              | 0                            | 20 109             | 0.00                    | 49.57        |
| <b>Subtotal Imports: Montana</b>      |               | <b>0</b>       | <b>370</b>       | <b>0</b>                     | <b>20 109</b>      | <b>0.00</b>             | <b>49.57</b> |
| <b>ND/Minn</b>                        | Manitoba      | 65 334         | 2 223 205        | 5 238 913                    | 147 643 366        | 80.19                   | 53.35        |
| <b>Subtotal Imports: ND/Minn</b>      |               | <b>65 334</b>  | <b>2 223 205</b> | <b>5 238 913</b>             | <b>147 643 366</b> | <b>80.19</b>            | <b>53.35</b> |
| <b>New Jersey</b>                     | Ontario       | 0              | 400              | 0                            | 29 410             | 0.00                    | 73.53        |
| <b>Subtotal Imports: New Jersey</b>   |               | <b>0</b>       | <b>400</b>       | <b>0</b>                     | <b>29 410</b>      | <b>0.00</b>             | <b>73.53</b> |
| <b>New York</b>                       | Ontario       | 56 112         | 513 097          | 2 908 052                    | 38 556 581         | 51.83                   | 68.85        |
|                                       | Quebec        | 127 543        | 2 879 951        | 5 544 417                    | 169 196 229        | 43.47                   | 53.91        |
| <b>Subtotal Imports: New York</b>     |               | <b>183 655</b> | <b>3 393 048</b> | <b>8 452 469</b>             | <b>207 752 811</b> | <b>46.02</b>            | <b>56.44</b> |
| <b>North Dakota</b>                   | Saskatchewan  | 96 930         | 670 727          | 3 855 466                    | 26 311 009         | 39.78                   | 37.74        |
| <b>Subtotal Imports: North Dakota</b> |               | <b>96 930</b>  | <b>670 727</b>   | <b>3 855 466</b>             | <b>26 311 009</b>  | <b>39.78</b>            | <b>37.74</b> |

Footnotes:

1. Includes capacity and energy charges.
2. Average value for the month and the last 12 months (excludes capacity charge).



National Energy Board  
Office national de l'énergie

## TABLE 3B

### Import Purchases Summary Report by Source and Destination

Page 5  
04/09/10

| Source                                | Destination      | Energy (MW.h)    |                   | Revenue (CAN\$) <sup>1</sup> |                    | CAN\$/MW.h <sup>2</sup> |              |
|---------------------------------------|------------------|------------------|-------------------|------------------------------|--------------------|-------------------------|--------------|
|                                       |                  | JUL04            | JAN04 - JUL04     | JUL04                        | JAN04 - JUL04      | JUL04                   | L12M         |
| <b>Ohio</b>                           | Ontario          | 861              | 24 038            | 66 575                       | 1 420 149          | 77.32                   | 59.12        |
| <b>Subtotal Imports: Ohio</b>         |                  | <b>861</b>       | <b>24 038</b>     | <b>66 575</b>                | <b>1 420 149</b>   | <b>77.32</b>            | <b>59.12</b> |
| <b>Pennsylvania</b>                   | Nova Scotia      | 275              | 7 088             | 13 341                       | 581 759            | 48.51                   | 84.27        |
|                                       | Ontario          | 34 144           | 108 132           | 941 913                      | 5 480 101          | 27.59                   | 51.38        |
| <b>Subtotal Imports: Pennsylvania</b> |                  | <b>34 419</b>    | <b>115 220</b>    | <b>955 254</b>               | <b>6 061 860</b>   | <b>27.75</b>            | <b>53.38</b> |
| <b>Washington</b>                     | Alberta          | 14 490           | 195 407           | 1 048 796                    | 10 848 670         | 72.38                   | 55.59        |
|                                       | British Columbia | 422 376          | 4 403 699         | 17 873 008                   | 161 818 913        | 42.32                   | 36.55        |
| <b>Subtotal Imports: Washington</b>   |                  | <b>436 866</b>   | <b>4 599 106</b>  | <b>18 921 804</b>            | <b>172 667 583</b> | <b>43.31</b>            | <b>37.49</b> |
| <b>Total Imports</b>                  |                  | <b>1 235 959</b> | <b>14 533 351</b> | <b>54 667 667</b>            | <b>735 740 297</b> | <b>44.23</b>            | <b>47.53</b> |

Footnotes:

1. Includes capacity and energy charges.
2. Average value for the month and the last 12 months (excludes capacity charge).



National Energy Board  
Office national de l'énergie

## TABLE 4 Source of Production Report <sup>1</sup> Canadian Exports

Page 1  
04/09/10

| Fuel Type     | JUL04            |                              |                         |
|---------------|------------------|------------------------------|-------------------------|
|               | Energy (MW.h)    | Revenue (CAN\$) <sup>2</sup> | CAN\$/MW.h <sup>2</sup> |
| Canadian Coal | 16 544           | 979 012                      | 59.18                   |
| Hydraulic     | 2 216 788        | 170 514 381                  | 76.92                   |
| Imported Coal | 47 693           | 2 916 326                    | 61.15                   |
| Imported Oil  | 149 086          | 8 988 534                    | 60.29                   |
| Natural Gas   | 94 966           | 5 205 677                    | 54.82                   |
| Other         | 1 081 946        | 50 864 394                   | 47.01                   |
| <b>Total</b>  | <b>3 607 021</b> | <b>239 468 325</b>           | <b>66.39</b>            |

Footnotes:

1. Source of production data filed by major exporters only.
2. Revenue figures are for illustrative purposes only and are strictly allocatable by energy source.

Additional Notes:

- Revenue for Permit 92 not available.



## TABLE 5 Source of Production Report <sup>1</sup> by Exporter

| Exporter        | Fuel Type | Authorization   | JUL04          |                              |                         |
|-----------------|-----------|-----------------|----------------|------------------------------|-------------------------|
|                 |           |                 | Energy (MW.h)  | Revenue (CAN\$) <sup>2</sup> | CAN\$/MW.h <sup>2</sup> |
| Aquila Networks | Hydraulic | Permit 115      | 5 535          | 273 485                      | 49.41                   |
|                 |           | <b>Subtotal</b> | <b>5 535</b>   | <b>273 485</b>               | <b>49.41</b>            |
|                 |           | <b>Subtotal</b> | <b>5 535</b>   | <b>273 485</b>               | <b>49.41</b>            |
| ATCO & Alberta  | Other     | Permit 93       | 105            | 5 952                        | 56.69                   |
|                 |           | <b>Subtotal</b> | <b>105</b>     | <b>5 952</b>                 | <b>56.69</b>            |
|                 |           | <b>Subtotal</b> | <b>105</b>     | <b>5 952</b>                 | <b>56.69</b>            |
| BC Hydro        | Hydraulic | Permit 105      | 77             | 5 497                        | 71.58                   |
|                 |           | Permit 192      | 744            | 0                            | 0.00                    |
|                 |           | Treaty 0        | 10 729         | 0                            | 0.00                    |
|                 |           | <b>Subtotal</b> | <b>11 550</b>  | <b>5 497</b>                 | <b>0.48</b>             |
|                 |           | <b>Subtotal</b> | <b>11 550</b>  | <b>5 497</b>                 | <b>0.48</b>             |
| Brascan         | Hydraulic | Permit 112      | 163 240        | 12 666 435                   | 77.59                   |
|                 |           | <b>Subtotal</b> | <b>163 240</b> | <b>12 666 435</b>            | <b>77.59</b>            |
|                 |           | <b>Subtotal</b> | <b>163 240</b> | <b>12 666 435</b>            | <b>77.59</b>            |
| Cargill Trading | Other     | Permit 204      | 10 973         | 644 917                      | 58.77                   |
|                 |           | <b>Subtotal</b> | <b>10 973</b>  | <b>644 917</b>               | <b>58.77</b>            |
|                 |           | <b>Subtotal</b> | <b>10 973</b>  | <b>644 917</b>               | <b>58.77</b>            |
| Conectiv Energy | Other     | Permit 212      | 61 771         | 2 946 624                    | 47.70                   |
|                 |           | <b>Subtotal</b> | <b>61 771</b>  | <b>2 946 624</b>             | <b>47.70</b>            |
|                 |           | <b>Subtotal</b> | <b>61 771</b>  | <b>2 946 624</b>             | <b>47.70</b>            |

Footnotes:

1. Source of production data filed by major exporters only.
2. Revenue figures are for illustrative purposes only and are strictly allocatable by energy source.



## TABLE 5 Source of Production Report <sup>1</sup> by Exporter

| Exporter        | Fuel Type       | Authorization   | JUL04          |                              |                         |
|-----------------|-----------------|-----------------|----------------|------------------------------|-------------------------|
|                 |                 |                 | Energy (MW.h)  | Revenue (CAN\$) <sup>2</sup> | CAN\$/MW.h <sup>2</sup> |
| Coral Energy    | Other           | Permit 174      | 46 302         | 2 178 148                    | 47.04                   |
|                 |                 | <b>Subtotal</b> | <b>46 302</b>  | <b>2 178 148</b>             | <b>47.04</b>            |
|                 | <b>Subtotal</b> |                 | <b>46 302</b>  | <b>2 178 148</b>             | <b>47.04</b>            |
| Direct Commod.  | Other           | Permit 240      | 2 612          | 167 237                      | 64.03                   |
|                 |                 | <b>Subtotal</b> | <b>2 612</b>   | <b>167 237</b>               | <b>64.03</b>            |
|                 | <b>Subtotal</b> |                 | <b>2 612</b>   | <b>167 237</b>               | <b>64.03</b>            |
| Direct EM Inc.  | Other           | Permit 200      | 1 750          | 116 533                      | 66.59                   |
|                 |                 | <b>Subtotal</b> | <b>1 750</b>   | <b>116 533</b>               | <b>66.59</b>            |
|                 | <b>Subtotal</b> |                 | <b>1 750</b>   | <b>116 533</b>               | <b>66.59</b>            |
| DTE Energy Trad | Other           | Permit 206      | 102 235        | 4 900 427                    | 47.93                   |
|                 |                 | <b>Subtotal</b> | <b>102 235</b> | <b>4 900 427</b>             | <b>47.93</b>            |
|                 | <b>Subtotal</b> |                 | <b>102 235</b> | <b>4 900 427</b>             | <b>47.93</b>            |
| Enmax Marketing | Canadian Coal   | Permit 169      | 5 914          | 335 428                      | 56.72                   |
|                 |                 | <b>Subtotal</b> | <b>5 914</b>   | <b>335 428</b>               | <b>56.72</b>            |
|                 | <b>Subtotal</b> |                 | <b>5 914</b>   | <b>335 428</b>               | <b>56.72</b>            |
| Entergy-Koch    | Other           | Permit 227      | 300            | 20 329                       | 67.76                   |
|                 |                 | <b>Subtotal</b> | <b>300</b>     | <b>20 329</b>                | <b>67.76</b>            |
|                 | <b>Subtotal</b> |                 | <b>300</b>     | <b>20 329</b>                | <b>67.76</b>            |
| Hydro-Quebec    | Hydraulic       | Licence 180     | 80 975         | 2 935 060                    | 36.25                   |
|                 |                 | Licence 181     | 15 108         | 547 612                      | 36.25                   |
|                 |                 | Licence 182     | 12 820         | 464 680                      | 36.25                   |

Footnotes:

1. Source of production data filed by major exporters only.
2. Revenue figures are for illustrative purposes only and are strictly allocatable by energy source.



**TABLE 5**  
**Source of Production Report**<sup>1</sup>  
**by Exporter**

| Exporter       | Fuel Type | Authorization   | JUL04          |                              |                         |        |       |
|----------------|-----------|-----------------|----------------|------------------------------|-------------------------|--------|-------|
|                |           |                 | Energy (MW.h)  | Revenue (CAN\$) <sup>2</sup> | CAN\$/MW.h <sup>2</sup> |        |       |
| Hydro-Quebec   | Hydraulic | Licence 183     | 20 855         | 755 921                      | 36.25                   |        |       |
|                |           | Licence 184     | 14 868         | 538 913                      | 36.25                   |        |       |
|                |           | Permit 64       | 824 034        | 78 276 682                   | 94.99                   |        |       |
|                |           | <b>Subtotal</b> | <b>968 660</b> | <b>83 518 868</b>            | <b>86.22</b>            |        |       |
|                |           | <b>Subtotal</b> | <b>968 660</b> | <b>83 518 868</b>            | <b>86.22</b>            |        |       |
| Manitoba Hydro | Hydraulic | Licence 170     | 288 863        | 11 879 729                   | 41.13                   |        |       |
|                |           | Permit 33       | 64 135         | 2 687 024                    | 41.90                   |        |       |
|                |           | Permit 34       | 47 539         | 1 991 729                    | 41.90                   |        |       |
|                |           | Permit 35       | 48 944         | 3 956 707                    | 80.84                   |        |       |
|                |           | Permit 45       | 101 924        | 7 760 380                    | 76.14                   |        |       |
|                |           | Permit 46       | 244 180        | 18 950 139                   | 77.61                   |        |       |
|                |           | Permit 68       | 16 282         | 578 960                      | 35.56                   |        |       |
|                |           | Permit 144      | 17 037         | 1 521 735                    | 89.32                   |        |       |
|                |           | Permit 155      | 20 510         | 1 273 405                    | 62.09                   |        |       |
|                |           | Permit 207      | 34 119         | 2 478 954                    | 72.66                   |        |       |
|                |           | <b>Subtotal</b> | <b>883 533</b> | <b>53 078 761</b>            | <b>60.08</b>            |        |       |
|                |           | Imported Coal   | Licence 170    | Licence 170                  | 888                     | 36 501 | 41.13 |
|                |           |                 |                | Permit 33                    | 197                     | 8 256  | 41.90 |
|                |           |                 |                | Permit 34                    | 146                     | 6 120  | 41.90 |
| Permit 35      | 150       |                 |                | 12 157                       | 80.84                   |        |       |
| Permit 45      | 313       |                 |                | 23 844                       | 76.14                   |        |       |
| Permit 46      | 750       |                 |                | 58 225                       | 77.61                   |        |       |
| Permit 68      | 50        | 1 779           | 35.56          |                              |                         |        |       |

Footnotes:

1. Source of production data filed by major exporters only.
2. Revenue figures are for illustrative purposes only and are strictly allocatable by energy source.



**TABLE 5**  
**Source of Production Report <sup>1</sup>**  
**by Exporter**

| Exporter        | Fuel Type     | Authorization    | JUL04             |                              |                         |
|-----------------|---------------|------------------|-------------------|------------------------------|-------------------------|
|                 |               |                  | Energy (MW.h)     | Revenue (CAN\$) <sup>2</sup> | CAN\$/MW.h <sup>2</sup> |
| Manitoba Hydro  | Imported Coal | Permit 144       | 52                | 4 676                        | 89.32                   |
|                 |               | Permit 155       | 63                | 3 913                        | 62.09                   |
|                 |               | Permit 207       | 105               | 7 617                        | 72.66                   |
|                 |               | <b>Subtotal</b>  | <b>2 715</b>      | <b>163 087</b>               | <b>60.08</b>            |
|                 | Other         | Licence 170      | 7 684             | 315 995                      | 41.13                   |
|                 |               | Permit 33        | 1 706             | 71 474                       | 41.90                   |
|                 |               | Permit 34        | 1 265             | 52 979                       | 41.90                   |
|                 |               | Permit 35        | 1 302             | 105 247                      | 80.84                   |
|                 |               | Permit 45        | 2 711             | 206 422                      | 76.14                   |
|                 |               | Permit 46        | 6 495             | 504 065                      | 77.61                   |
|                 |               | Permit 68        | 433               | 15 400                       | 35.56                   |
|                 |               | Permit 144       | 453               | 40 477                       | 89.32                   |
|                 |               | Permit 155       | 546               | 33 872                       | 62.09                   |
|                 |               | Permit 207       | 908               | 65 939                       | 72.66                   |
| <b>Subtotal</b> | <b>23 502</b> | <b>1 411 869</b> | <b>60.08</b>      |                              |                         |
| <b>Subtotal</b> |               | <b>909 749</b>   | <b>54 653 718</b> | <b>60.08</b>                 |                         |
| NB Power        | Canadian Coal | Permit 90        | 1 278             | 88 227                       | 69.04                   |
|                 |               | Permit 91        | 8 692             | 519 319                      | 59.75                   |
|                 |               | Permit 148       | 660               | 36 039                       | 54.60                   |
|                 |               | <b>Subtotal</b>  | <b>10 630</b>     | <b>643 585</b>               | <b>60.54</b>            |

Footnotes:

1. Source of production data filed by major exporters only.
2. Revenue figures are for illustrative purposes only and are strictly allocatable by energy source.



## TABLE 5 Source of Production Report <sup>1</sup> by Exporter

| Exporter        | Fuel Type       | Authorization   | JUL04             |                              |                         |
|-----------------|-----------------|-----------------|-------------------|------------------------------|-------------------------|
|                 |                 |                 | Energy (MW.h)     | Revenue (CAN\$) <sup>2</sup> | CAN\$/MW.h <sup>2</sup> |
| NB Power        | Hydraulic       | Permit 90       | 939               | 64 824                       | 69.04                   |
|                 |                 | Permit 91       | 1 878             | 112 204                      | 59.75                   |
|                 |                 | <b>Subtotal</b> | <b>2 817</b>      | <b>177 029</b>               | <b>62.84</b>            |
|                 | Imported Coal   | Permit 90       | 7 738             | 534 195                      | 69.04                   |
|                 |                 | Permit 91       | 36 088            | 2 156 140                    | 59.75                   |
|                 |                 | Permit 148      | 1 152             | 62 904                       | 54.60                   |
|                 |                 | <b>Subtotal</b> | <b>44 978</b>     | <b>2 753 240</b>             | <b>61.21</b>            |
|                 | Imported Oil    | Permit 90       | 16 419            | 1 133 490                    | 69.04                   |
|                 |                 | Permit 91       | 118 787           | 7 097 136                    | 59.75                   |
|                 |                 | Permit 148      | 13 880            | 757 908                      | 54.60                   |
|                 |                 | <b>Subtotal</b> | <b>149 086</b>    | <b>8 988 534</b>             | <b>60.29</b>            |
|                 | Natural Gas     | Permit 90       | 157               | 10 839                       | 69.04                   |
|                 |                 | Permit 91       | 3 477             | 207 739                      | 59.75                   |
|                 |                 | Permit 148      | 91 332            | 4 987 099                    | 54.60                   |
|                 |                 | <b>Subtotal</b> | <b>94 966</b>     | <b>5 205 677</b>             | <b>54.82</b>            |
| <b>Subtotal</b> |                 | <b>302 477</b>  | <b>17 768 064</b> | <b>58.74</b>                 |                         |
| Ont Power Gen   | Other           | Permit 24       | 13                | 26                           | 2.03                    |
|                 |                 | <b>Subtotal</b> | <b>13</b>         | <b>26</b>                    | <b>2.03</b>             |
|                 | <b>Subtotal</b> |                 | <b>13</b>         | <b>26</b>                    | <b>2.03</b>             |
| OPGI/OPIM       | Other           | Permit 21       | 248 392           | 13 406 668                   | 53.97                   |
|                 |                 | <b>Subtotal</b> | <b>248 392</b>    | <b>13 406 668</b>            | <b>53.97</b>            |
|                 | <b>Subtotal</b> |                 | <b>248 392</b>    | <b>13 406 668</b>            | <b>53.97</b>            |

Footnotes:

1. Source of production data filed by major exporters only.
2. Revenue figures are for illustrative purposes only and are strictly allocatable by energy source.





## TABLE 5 Source of Production Report <sup>1</sup> by Exporter

| Exporter                   | Fuel Type       | Authorization   | JUL04             |                              |                         |
|----------------------------|-----------------|-----------------|-------------------|------------------------------|-------------------------|
|                            |                 |                 | Energy (MW.h)     | Revenue (CAN\$) <sup>2</sup> | CAN\$/MW.h <sup>2</sup> |
| <b>Powerex Corp.</b>       | Hydraulic       | Permit 118      | 177 657           | 20 590 404                   | 115.90                  |
|                            |                 | <b>Subtotal</b> | <b>177 657</b>    | <b>20 590 404</b>            | <b>115.90</b>           |
|                            | Other           | Permit 116      | 79 573            | 4 165 256                    | 52.35                   |
|                            |                 | Permit 118      | 454 360           | 18 696 676                   | 41.15                   |
|                            |                 | <b>Subtotal</b> | <b>533 933</b>    | <b>22 861 932</b>            | <b>42.82</b>            |
| <b>Subtotal</b>            |                 | <b>711 590</b>  | <b>43 452 336</b> | <b>61.06</b>                 |                         |
| <b>SPLIT ROCK</b>          | Other           | Permit 221      | 36 486            | 1 624 150                    | 44.51                   |
|                            |                 | <b>Subtotal</b> | <b>36 486</b>     | <b>1 624 150</b>             | <b>44.51</b>            |
|                            | <b>Subtotal</b> |                 | <b>36 486</b>     | <b>1 624 150</b>             | <b>44.51</b>            |
| <b>Teck Cominco</b>        | Hydraulic       | Permit 244      | 3 796             | 203 902                      | 53.71                   |
|                            |                 | <b>Subtotal</b> | <b>3 796</b>      | <b>203 902</b>               | <b>53.71</b>            |
|                            | <b>Subtotal</b> |                 | <b>3 796</b>      | <b>203 902</b>               | <b>53.71</b>            |
| <b>TransCanada Ene</b>     | Other           | Permit 78       | 3 851             | 192 956                      | 50.11                   |
|                            |                 | <b>Subtotal</b> | <b>3 851</b>      | <b>192 956</b>               | <b>50.11</b>            |
|                            | <b>Subtotal</b> |                 | <b>3 851</b>      | <b>192 956</b>               | <b>50.11</b>            |
| <b>TransCanada PM</b>      | Other           | Permit 185      | 9 721             | 386 626                      | 39.77                   |
|                            |                 | <b>Subtotal</b> | <b>9 721</b>      | <b>386 626</b>               | <b>39.77</b>            |
|                            | <b>Subtotal</b> |                 | <b>9 721</b>      | <b>386 626</b>               | <b>39.77</b>            |
| <b>Total All Exporters</b> |                 |                 | <b>3 607 021</b>  | <b>239 468 325</b>           | <b>66.39</b>            |

Footnotes:

1. Source of production data filed by major exporters only.
2. Revenue figures are for illustrative purposes only and are strictly allocatable by energy source.