

**Transportation Safety Board of Canada**

**Table 1  
Railway Occurrence and Casualty Statistics for December 2005**

	December			Year To Date		
	2005	2004	2000-2004 Average	2005	2004	2000-2004 Average
<b>Accidents</b>						
Main-Track Train Collisions	1	0	0	6	5	7
Main-Track Train Derailments	15	18	13	195	152	133
Crossings	28	29	27	270	237	258
Non-Main-Track Train Collisions	8	8	10	96	116	106
Non-Main-Track Train Derailments	36	39	30	538	450	392
Collisions/Derailments Involving Track Units	1	2	2	20	26	19
Employee/Passenger	1	2	1	8	12	9
Trespassers	2	6	6	83	99	79
Fires/Explosions	0	1	1	17	15	26
Other	1	5	3	16	26	26
<b>Total</b>	<b>93</b>	<b>110</b>	<b>92</b>	<b>1,249</b>	<b>1,138</b>	<b>1,055</b>
<b>Incidents</b>						
Dangerous Goods Leaker	8	6	13	125	131	166
Main-track Switch in Abnormal Position	0	0	0	10	12	12
Movement Exceeds Limits of Authority	3	5	7	89	90	96
Runaway Rolling Stock	0	1	1	16	11	12
Others	0	0	1	5	8	14
<b>Total</b>	<b>11</b>	<b>12</b>	<b>21</b>	<b>245</b>	<b>252</b>	<b>300</b>
Million Train-miles*				95.80	92.60	90.40
Accidents/Million Train-miles				13.04	12.29	11.67
<b>Accidents Involving Dangerous Goods</b>						
Main-track Train Derailments	2	4	3	34	37	29
Crossings	1	2	1	15	11	8
Non-Main-Track Train Collisions	3	1	4	46	44	44
Non-Main-Track Train Derailments	11	12	10	112	106	130
All Others	0	2	1	9	10	10
<b>Total</b>	<b>17</b>	<b>21</b>	<b>19</b>	<b>216</b>	<b>208</b>	<b>222</b>
<b>Accidents with a DG Release</b>	0	0	1	6	6	6
<b>Accidents Involving Passenger Trains</b>	5	9	6	84	79	68
<b>Fatalities</b>						
Crossings	0	5	3	38	25	35
Trespassers	0	4	4	64	68	55
All Others	1	2	0	2	8	3
<b>Total</b>	<b>1</b>	<b>11</b>	<b>7</b>	<b>104</b>	<b>101</b>	<b>93</b>
<b>Serious Injuries</b>						
Crossings	7	8	5	54	50	45
Trespassers	2	2	1	18	33	24
All Others	0	0	1	6	10	12
<b>Total</b>	<b>9</b>	<b>10</b>	<b>7</b>	<b>78</b>	<b>93</b>	<b>81</b>

\* Train-miles estimated. (Source: Transport Canada)

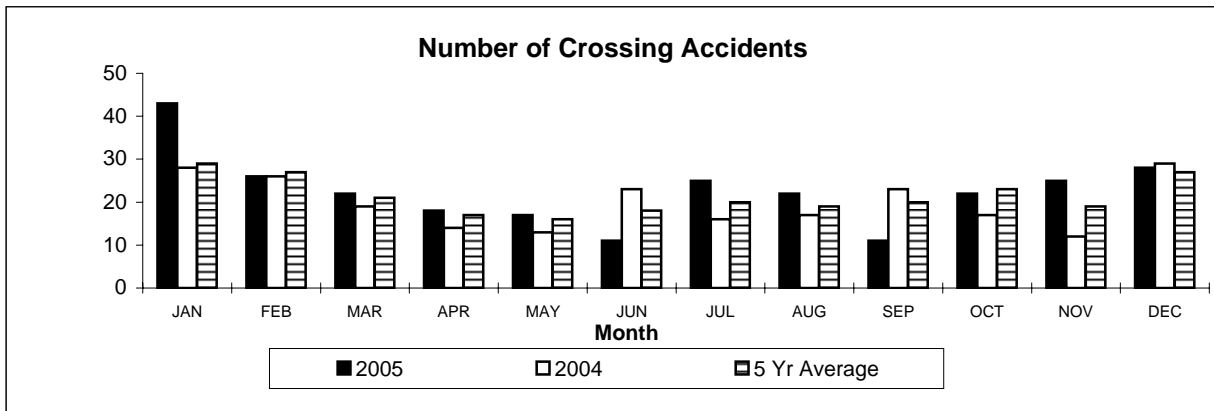
Figures are preliminary as of January 20th, 2006

All 5-year averages have been rounded. The totals sometimes do not coincide to the sum of these averages.

**Transportation Safety Board of Canada**

**Table 2  
Railway Crossing and Trespasser Accidents for December 2005**

Province		2005 Year To Date				Crossing		Trespasser	
		Public Crossings (by Protection Type)		Private Crossings	Farm Crossings	Total To Date		Year To Date	
		Automated	Passive			2005	2004	2005	2004
<b>NFL</b>	Accidents	0	0	1	0	1	0	0	1
	Fatalities	0	0	0	0	0	0	0	0
	Serious Injuries	0	0	1	0	1	0	0	1
<b>NS</b>	Accidents	4	1	0	0	5	2	2	2
	Fatalities	0	0	0	0	0	0	1	1
	Serious Injuries	2	0	0	0	2	0	1	1
<b>NB</b>	Accidents	1	1	1	0	3	2	2	0
	Fatalities	1	0	0	0	1	0	1	0
	Serious Injuries	0	0	0	0	0	2	1	0
<b>QUE</b>	Accidents	40	7	7	2	56	62	14	16
	Fatalities	5	1	1	0	7	9	12	10
	Serious Injuries	9	1	1	0	11	14	2	6
<b>ONT</b>	Accidents	58	23	9	2	92	70	44	45
	Fatalities	12	3	0	1	16	12	34	32
	Serious Injuries	14	4	2	0	20	11	9	13
<b>MAN</b>	Accidents	14	2	2	0	18	19	6	3
	Fatalities	0	0	0	0	2	1	4	3
	Serious Injuries	0	0	0	0	2	6	2	0
<b>SAS</b>	Accidents	0	0	0	0	19	16	0	3
	Fatalities	0	0	0	0	2	1	0	4
	Serious Injuries	0	0	0	0	4	3	0	0
<b>ALT</b>	Accidents	0	0	0	0	57	38	5	16
	Fatalities	0	0	0	0	7	2	4	11
	Serious Injuries	8	2	1	0	11	9	1	5
<b>BC</b>	Accidents	9	3	6	0	18	26	10	13
	Fatalities	1	0	2	0	3	0	8	7
	Serious Injuries	2	0	1	0	3	5	2	7
<b>NWT</b>	Accidents	0	1	0	0	1	2	0	0
	Fatalities	0	0	0	0	0	0	0	0
	Serious Injuries	0	0	0	0	0	0	0	0
<b>CAN</b>	Accidents	161	72	32	5	270	237	83	99
	Fatalities	26	7	4	1	38	25	64	68
	Serious Injuries	0	0	0	0	54	50	18	33



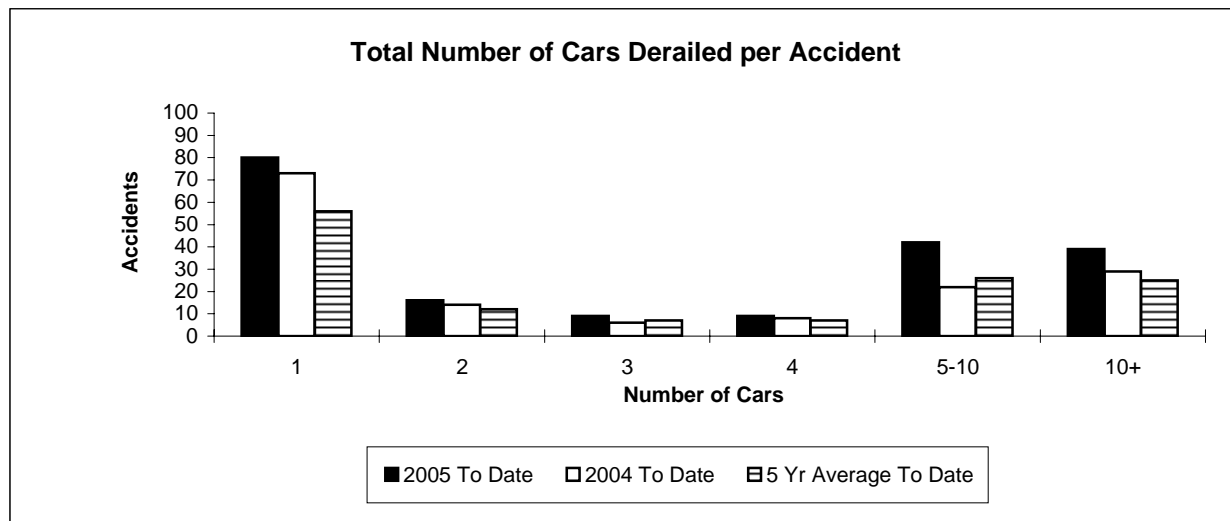
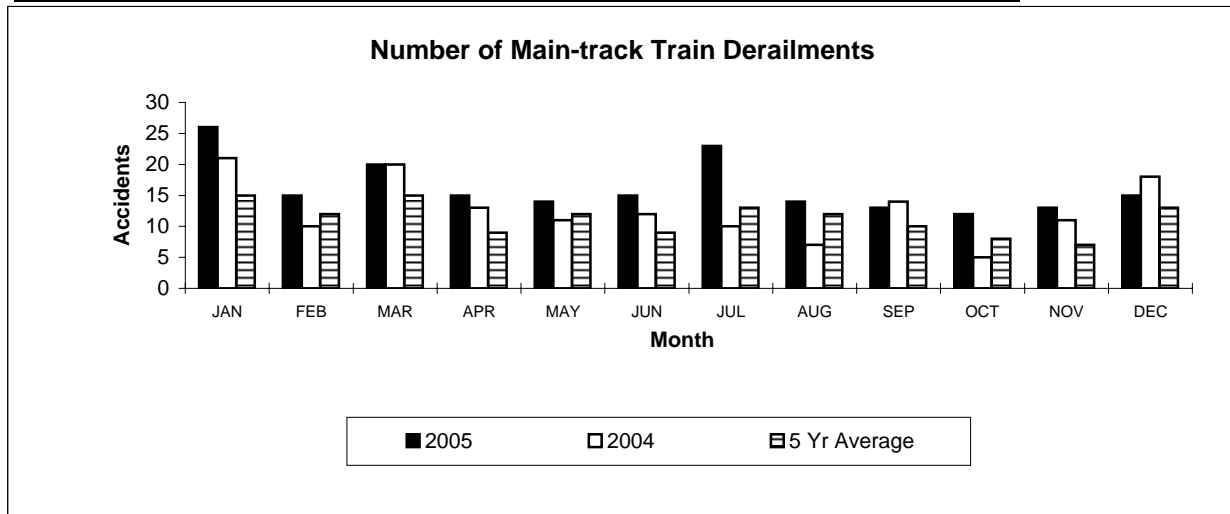
Figures are preliminary as of January 20th, 2006

**Table 3**

**Main-Track Train Derailments  
December 2005**

Province	Total Accidents		Accidents with DG Involvement	
	2005 To Date	2004 To Date	2005 To Date	2004 To Date
Newfoundland	2	0	0	0
Nova Scotia	0	2	0	0
New Brunswick	3	3	2	2
Quebec	25	21	2	6
Ontario	60	46	13	13
Manitoba	11	10	2	0
Saskatchewan	22	14	2	3
Alberta	30	24	8	11
British Columbia	42	32	5	2
Northwest Territories	0	0	0	0
<b>Canada</b>	<b>195</b>	<b>152</b>	<b>34</b>	<b>37</b>

\*There were two occurrences with dangerous goods release to date in 2005 and two in 2004.



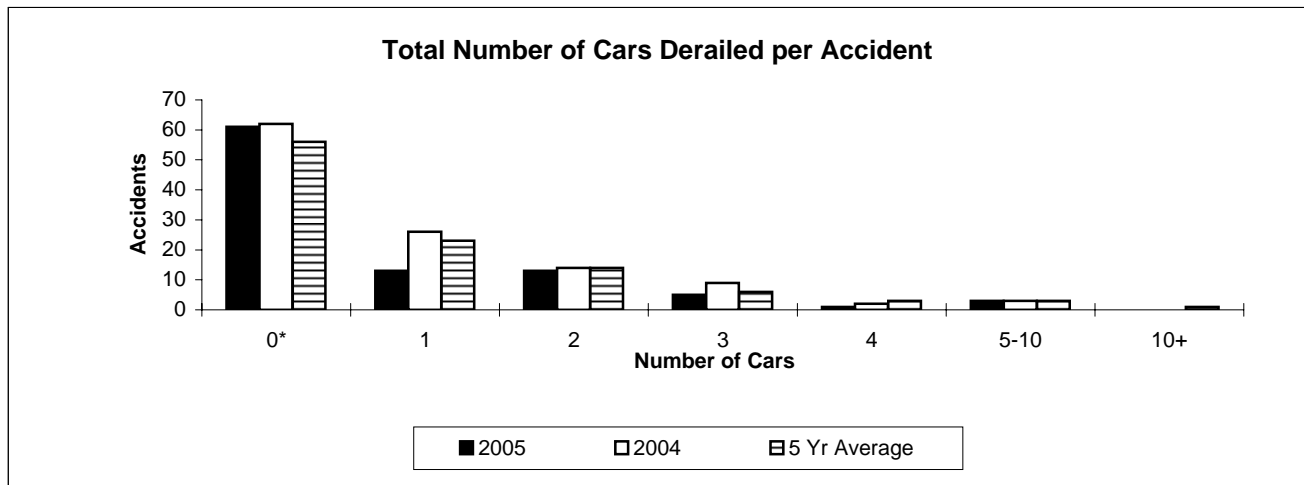
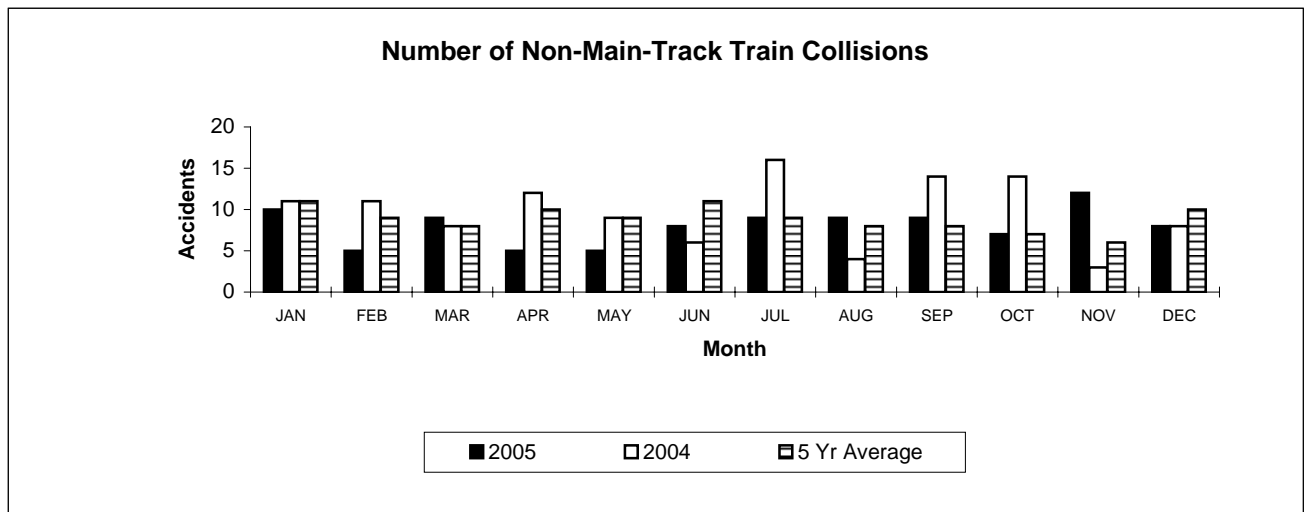
Figures are preliminary as of January 20th, 2005

**Table 4**

**Non-Main-Track Train Collisions  
December 2005**

Province	Total Accidents		Accidents with DG Involvement	
	2005 To Date	2004 To Date	2005 to Date	2004 To Date
Newfoundland	0	0	0	0
Nova Scotia	0	0	0	0
New Brunswick	1	1	1	1
Quebec	14	19	3	8
Ontario	29	28	18	9
Manitoba	11	12	6	3
Saskatchewan	5	4	0	0
Alberta	21	33	12	18
British Columbia	15	19	6	5
Northwest Territories	0	0	0	0
<b>Canada</b>	<b>96</b>	<b>116</b>	<b>46</b>	<b>44</b>

\*There were no occurrences with dangerous goods release to date in 2005 and two in 2004 .



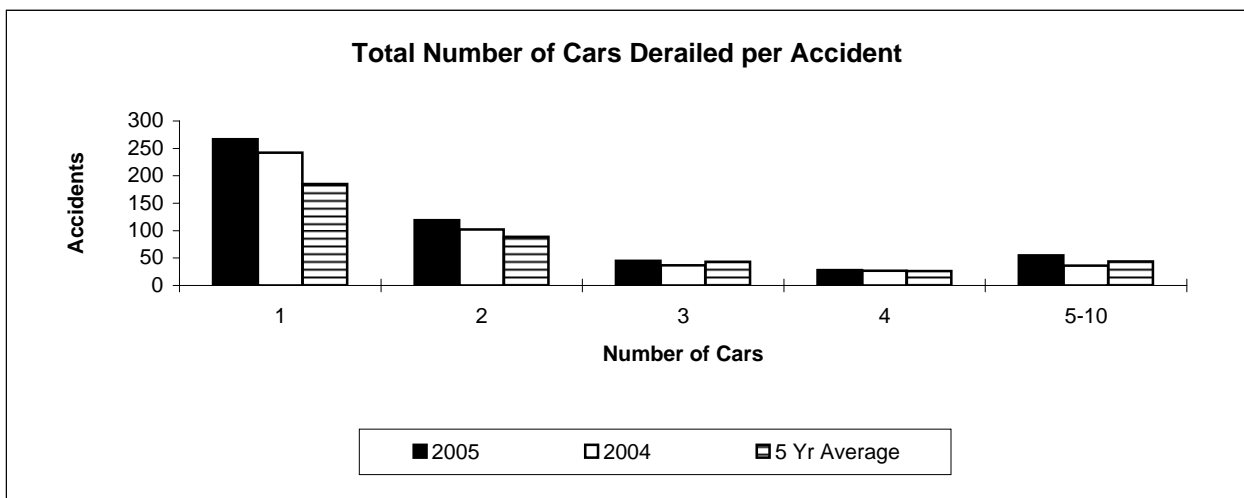
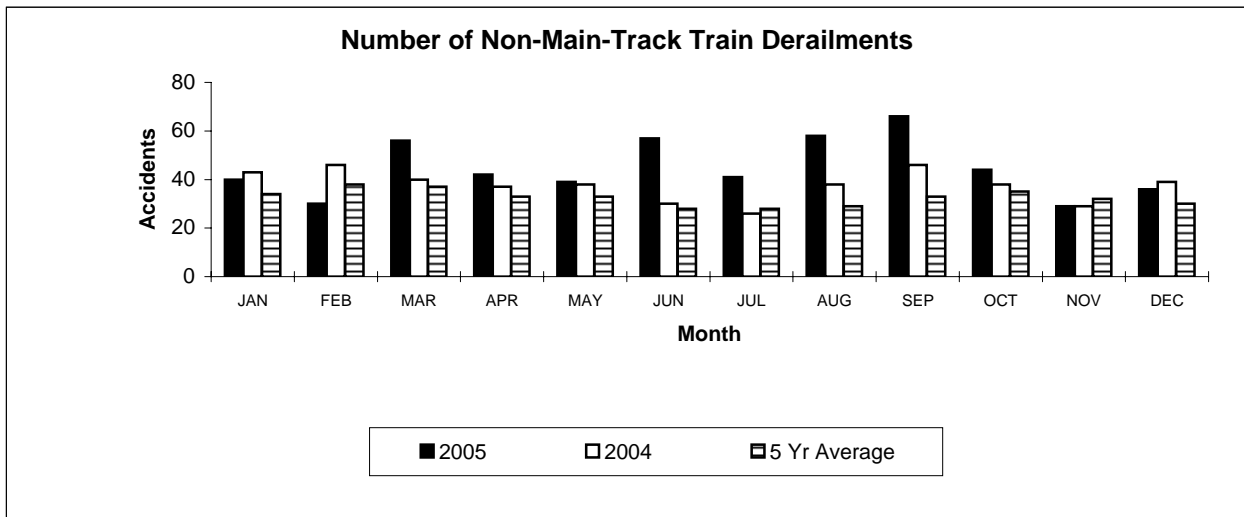
\*Number of collisions with no derailments.  
Figures are preliminary as of January 20th, 2005

**Table 5**

**Non-Main-Track Train Derailments  
December 2005**

Province	Total Accidents		Accidents with DG Involvement	
	2005 To Date	2004 To Date	2005 To Date	2004 To Date
Newfoundland	1	0	0	0
Nova Scotia	6	10	1	1
New Brunswick	15	13	7	6
Quebec	91	79	28	21
Ontario	152	162	26	37
Manitoba	38	30	11	10
Saskatchewan	47	27	4	3
Alberta	118	85	21	18
British Columbia	69	44	13	10
Northwest Territories	1	0	1	0
<b>Canada</b>	<b>538</b>	<b>450</b>	<b>112</b>	<b>106</b>

\*There were two occurrence with dangerous goods release in 2005 and one in 2004 to date.



Figures are preliminary as of January 20th, 2005