

**Transportation Safety Board of Canada**

**Table 1  
Railway Occurrence and Casualty Statistics for February 2006**

	February			Year To Date		
	2006	2005	2001-2005 Average	2006	2005	2001-2005 Average
<b>Accidents</b>						
Main-Track Train Collisions	0	1	1	0	2	1
Main-Track Train Derailments	14	15	14	19	41	31
Crossings	27	26	27	57	69	58
Non-Main-Track Train Collisions	6	5	8	19	15	18
Non-Main-Track Train Derailments	31	30	37	63	70	73
Collisions/Derailments Involving Track Units	0	3	2	1	3	3
Employee/Passenger	3	0	1	3	1	1
Trespassers	7	7	3	18	11	7
Fires/Explosions	0	1	2	0	3	3
Other	1	2	2	7	10	5
<b>Total</b>	<b>89</b>	<b>90</b>	<b>96</b>	<b>187</b>	<b>225</b>	<b>201</b>
<b>Incidents</b>						
Dangerous Goods Leaker	6	8	13	11	20	25
Main-track Switch in Abnormal Position	0	3	1	0	4	2
Movement Exceeds Limits of Authority	12	8	10	16	14	15
Runaway Rolling Stock	0	1	1	1	4	3
Others	2	1	1	3	1	1
<b>Total</b>	<b>20</b>	<b>21</b>	<b>26</b>	<b>31</b>	<b>43</b>	<b>46</b>
Million Train-miles*				16.10	15.30	14.60
Accidents/Million Train-miles				11.61	14.71	13.77
<b>Accidents Involving Dangerous Goods</b>						
Main-track Train Derailments	2	3	3	2	8	6
Crossings	0	1	1	3	3	2
Non-Main-Track Train Collisions	1	4	4	7	10	8
Non-Main-Track Train Derailments	10	6	11	12	14	24
All Others	0	1	1	0	3	2
<b>Total</b>	<b>13</b>	<b>15</b>	<b>20</b>	<b>24</b>	<b>38</b>	<b>43</b>
<b>Accidents with a DG Release</b>	0	0	1	0	1	1
<b>Accidents Involving Passenger Trains</b>	8	6	6	15	12	12
<b>Fatalities</b>						
Crossings	4	5	4	5	7	6
Trespassers	6	5	2	13	9	5
All Others	1	0	0	1	1	1
<b>Total</b>	<b>11</b>	<b>10</b>	<b>6</b>	<b>19</b>	<b>17</b>	<b>12</b>
<b>Serious Injuries</b>						
Crossings	1	6	5	3	15	10
Trespassers	0	2	1	3	2	2
All Others	1	0	1	2	0	1
<b>Total</b>	<b>2</b>	<b>8</b>	<b>7</b>	<b>8</b>	<b>17</b>	<b>13</b>

\*Train-miles estimated. (Source: Transport Canada)

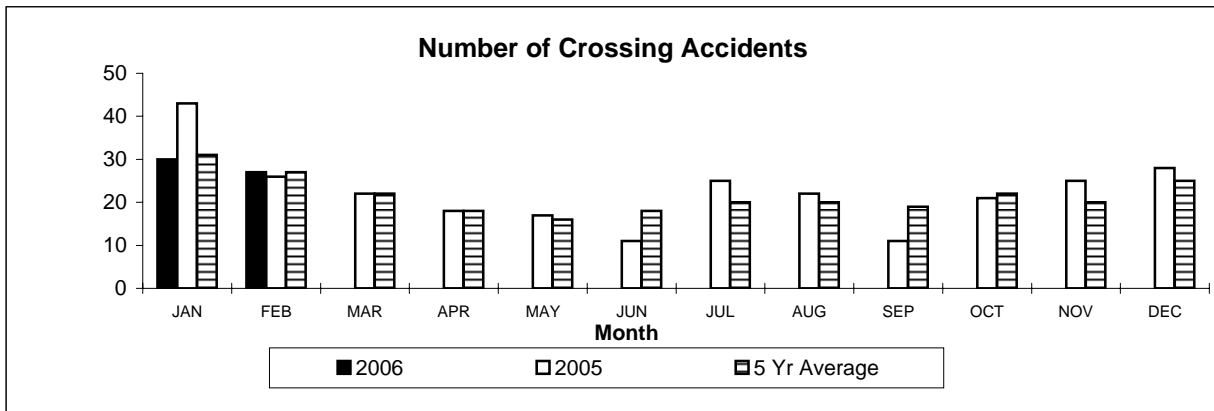
Figures are preliminary as of March 13th, 2006

All 5-year averages have been rounded. The totals sometimes do not coincide to the sum of these averages.

Transportation Safety Board of Canada

**Table 2  
Railway Crossing and Trespasser Accidents for February 2006**

Province		2006 Year To Date				Crossing		Trespasser	
		Public Crossings (by Protection Type)		Private	Farm	Total To Date		Year To Date	
		Automated	Passive	Crossings	Crossings	2006	2005	2006	2005
<b>NFL</b>	Accidents	1	0	0	0	1	0	0	0
	Fatalities	0	0	0	0	0	0	0	0
	Serious Injuries	1	0	0	0	1	0	0	0
<b>NS</b>	Accidents	0	0	0	0	0	2	0	0
	Fatalities	0	0	0	0	0	0	0	0
	Serious Injuries	0	0	0	0	0	1	0	0
<b>NB</b>	Accidents	0	0	1	0	1	0	1	1
	Fatalities	0	0	0	0	0	0	0	1
	Serious Injuries	0	0	0	0	0	0	1	0
<b>QUE</b>	Accidents	7	0	2	0	9	18	3	3
	Fatalities	0	0	0	0	0	1	3	2
	Serious Injuries	0	0	0	0	0	3	0	1
<b>ONT</b>	Accidents	12	5	3	0	20	14	7	4
	Fatalities	3	0	1	0	4	2	7	4
	Serious Injuries	1	1	0	0	2	3	0	0
<b>MAN</b>	Accidents	0	4	0	0	4	9	1	0
	Fatalities	0	0	0	0	0	1	0	0
	Serious Injuries	0	1	0	0	1	1	0	0
<b>SAS</b>	Accidents	2	0	1	0	3	2	0	0
	Fatalities	1	0	0	0	1	0	0	0
	Serious Injuries	0	0	0	0	0	0	0	0
<b>ALT</b>	Accidents	8	3	2	0	13	19	3	1
	Fatalities	0	0	0	0	0	1	2	1
	Serious Injuries	0	0	0	0	0	6	0	0
<b>BC</b>	Accidents	4	1	1	0	6	5	3	2
	Fatalities	0	0	0	0	0	2	1	1
	Serious Injuries	0	0	0	0	0	1	2	1
<b>NWT</b>	Accidents	0	0	0	0	0	0	0	0
	Fatalities	0	0	0	0	0	0	0	0
	Serious Injuries	0	0	0	0	0	0	0	0
<b>CAN</b>	Accidents	34	13	10	0	57	69	18	11
	Fatalities	4	0	1	0	5	7	13	9
	Serious Injuries	2	2	0	0	4	15	3	2



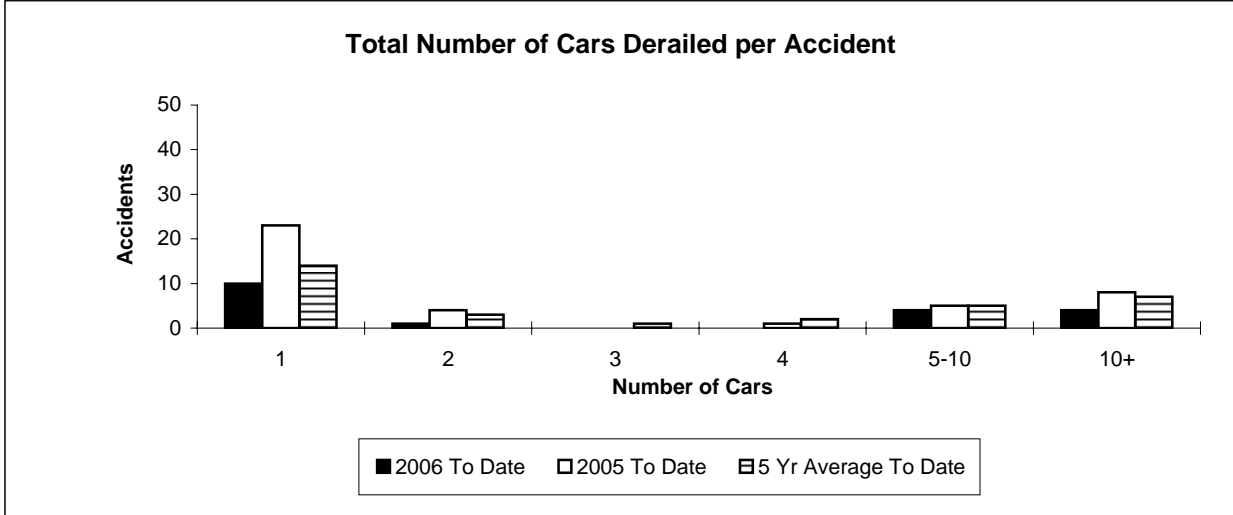
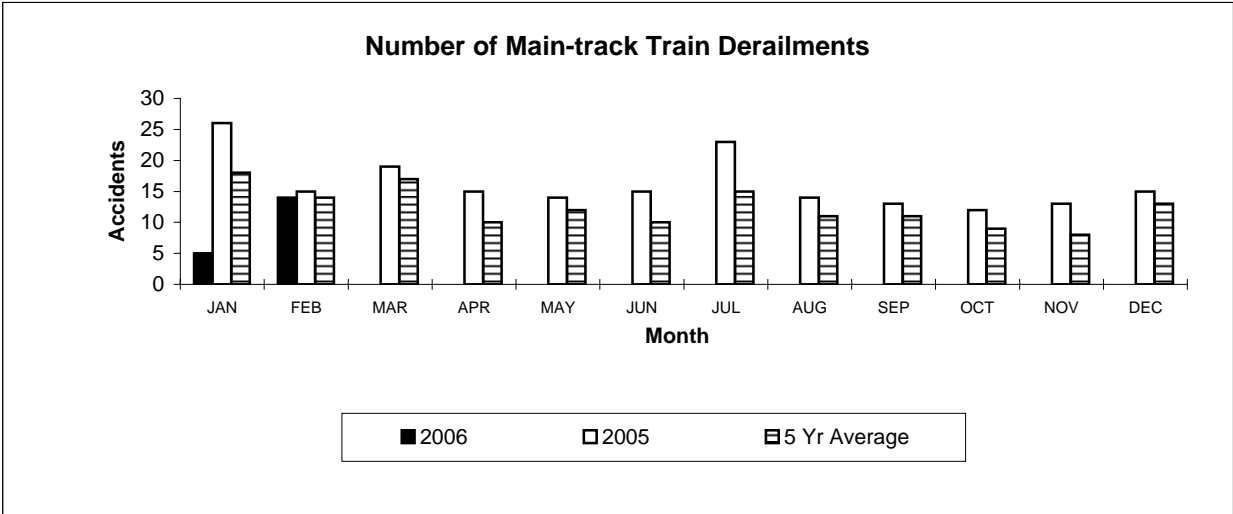
Figures are preliminary as of March 13th, 2006

**Table 3**

**Main-Track Train Derailments  
February 2006**

Province	Total Accidents		Accidents with DG Involvement	
	2006 To Date	2005 To Date	2006 To Date	2005 To Date
Newfoundland	1	0	0	0
Nova Scotia	0	0	0	0
New Brunswick	0	1	0	1
Quebec	3	7	1	1
Ontario	6	16	1	4
Manitoba	0	4	0	2
Saskatchewan	3	4	0	0
Alberta	2	5	0	0
British Columbia	4	4	0	0
Northwest Territories	0	0	0	0
<b>Canada</b>	<b>19</b>	<b>41</b>	<b>2</b>	<b>8</b>

\*There were no occurrences with dangerous goods release to date in 2006 and one in 2005.



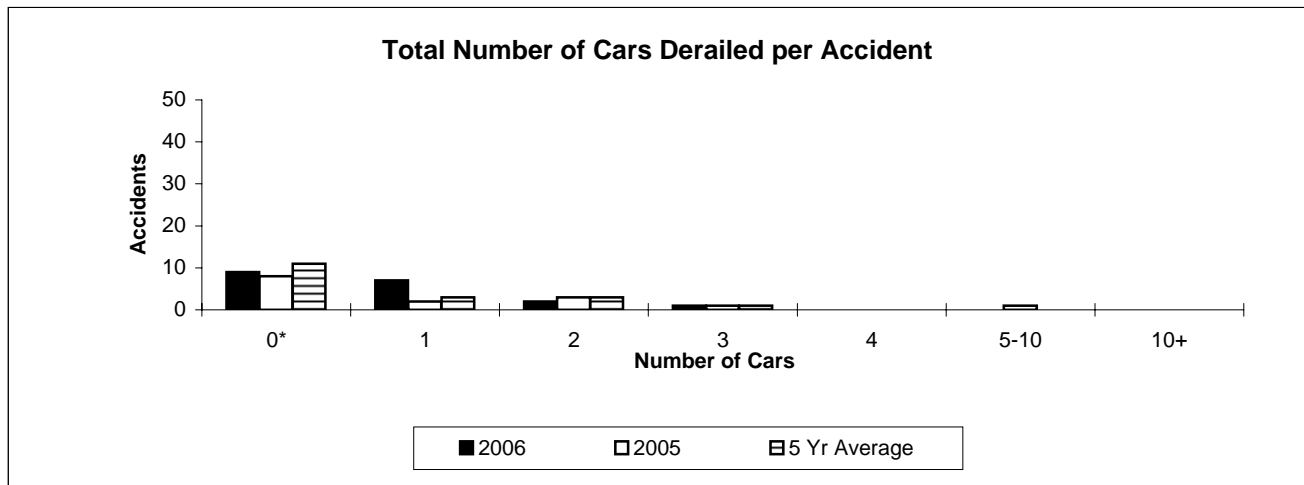
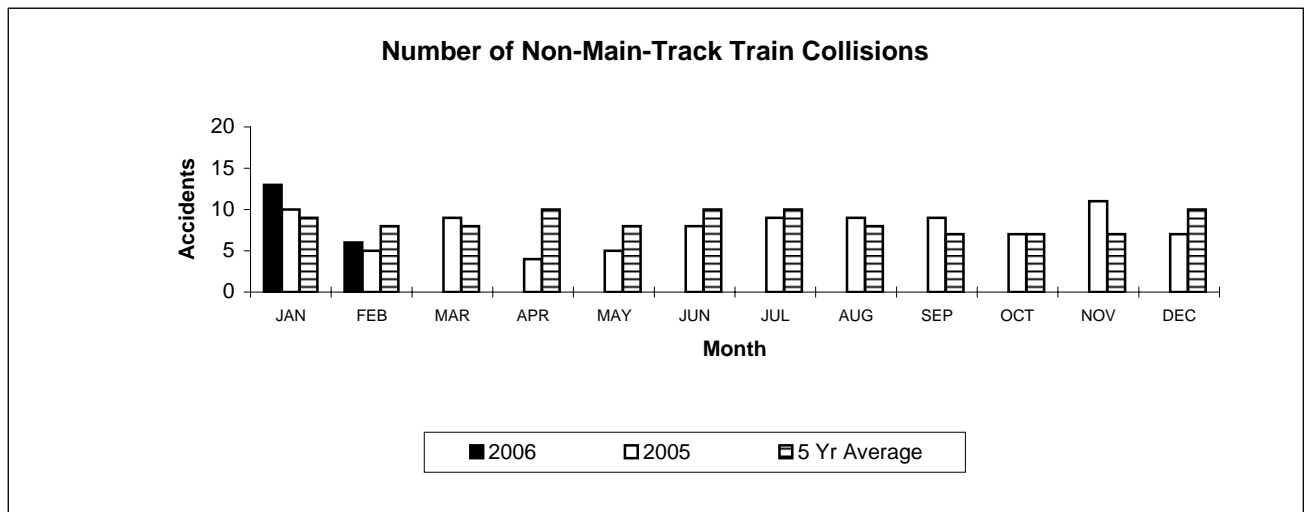
Figures are preliminary as of March 13th, 2006

**Table 4**

**Non-Main-Track Train Collisions  
February 2006**

Province	Total Accidents		Accidents with DG Involvement	
	2006 To Date	2005 To Date	2006 to Date	2005 To Date
Newfoundland	0	0	0	0
Nova Scotia	0	0	0	0
New Brunswick	2	1	2	1
Quebec	6	2	1	0
Ontario	5	5	2	3
Manitoba	2	2	1	2
Saskatchewan	1	1	0	0
Alberta	3	3	1	3
British Columbia	0	1	0	1
Northwest Territories	0	0	0	0
<b>Canada</b>	<b>19</b>	<b>15</b>	<b>7</b>	<b>10</b>

\*There were no occurrences with dangerous goods release to date in 2006 or in 2005 .



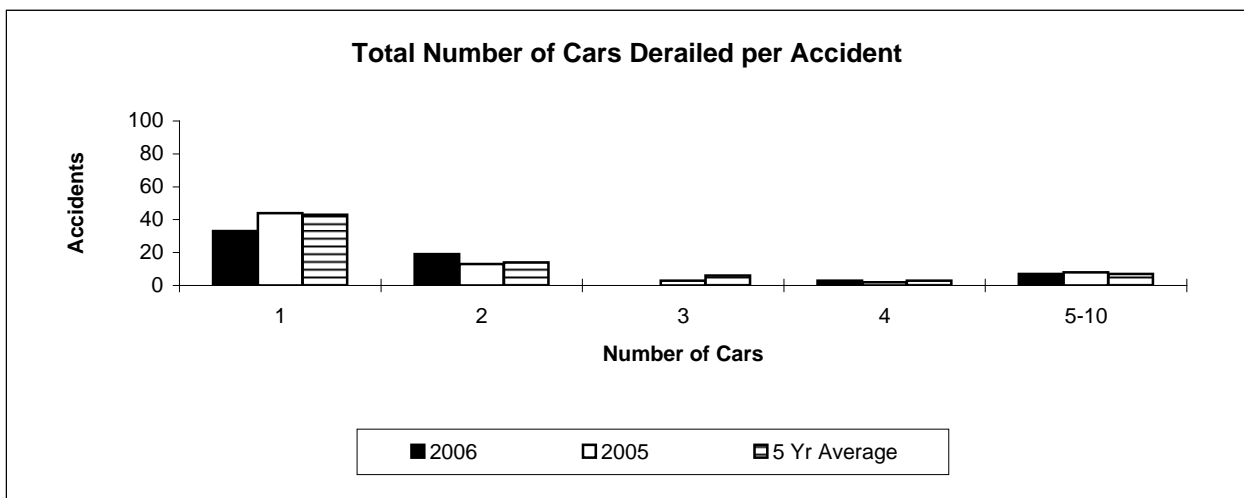
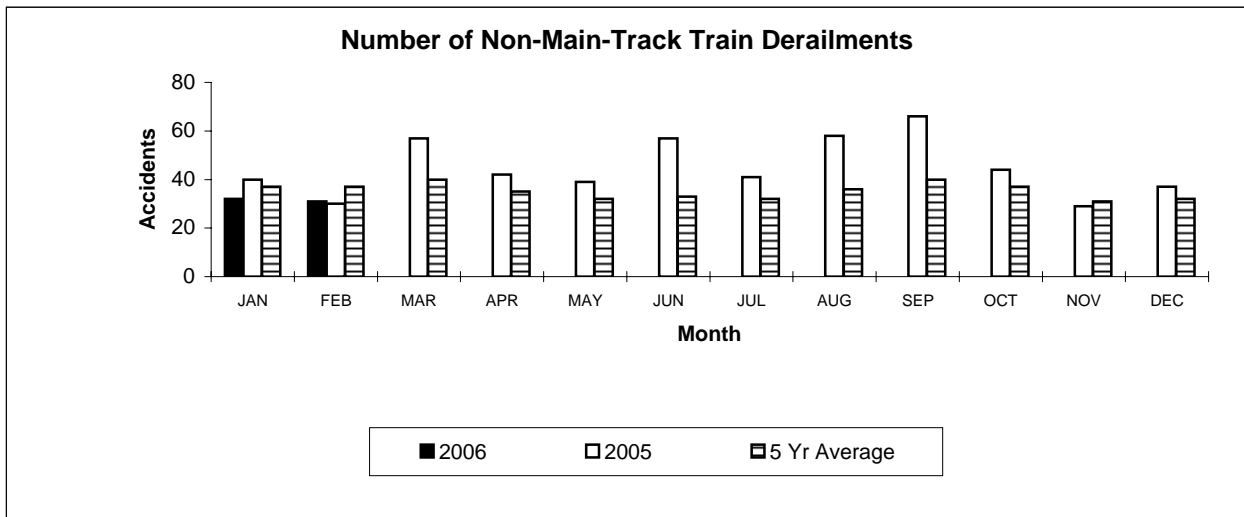
\*Number of collisions with no derailments.  
Figures are preliminary as of March 13th, 2006

**Table 5**

**Non-Main-Track Train Derailments  
February 2006**

Province	Total Accidents		Accidents with DG Involvement	
	2006 To Date	2005 To Date	2006 To Date	2005 To Date
Newfoundland	1	0	0	0
Nova Scotia	0	2	0	0
New Brunswick	3	2	2	1
Quebec	10	15	3	6
Ontario	23	23	4	1
Manitoba	3	4	1	2
Saskatchewan	5	5	0	0
Alberta	7	13	2	2
British Columbia	11	6	0	2
Northwest Territories	0	0	0	0
<b>Canada</b>	<b>63</b>	<b>70</b>	<b>12</b>	<b>14</b>

\*There were no occurrences with dangerous goods release to date in 2006 or in 2005.



Figures are preliminary as of March 13th, 2006