

**PUBLIC OFFICE HOLDERS' (POH)
ATTENDANCE AT SPECIAL EVENTS**

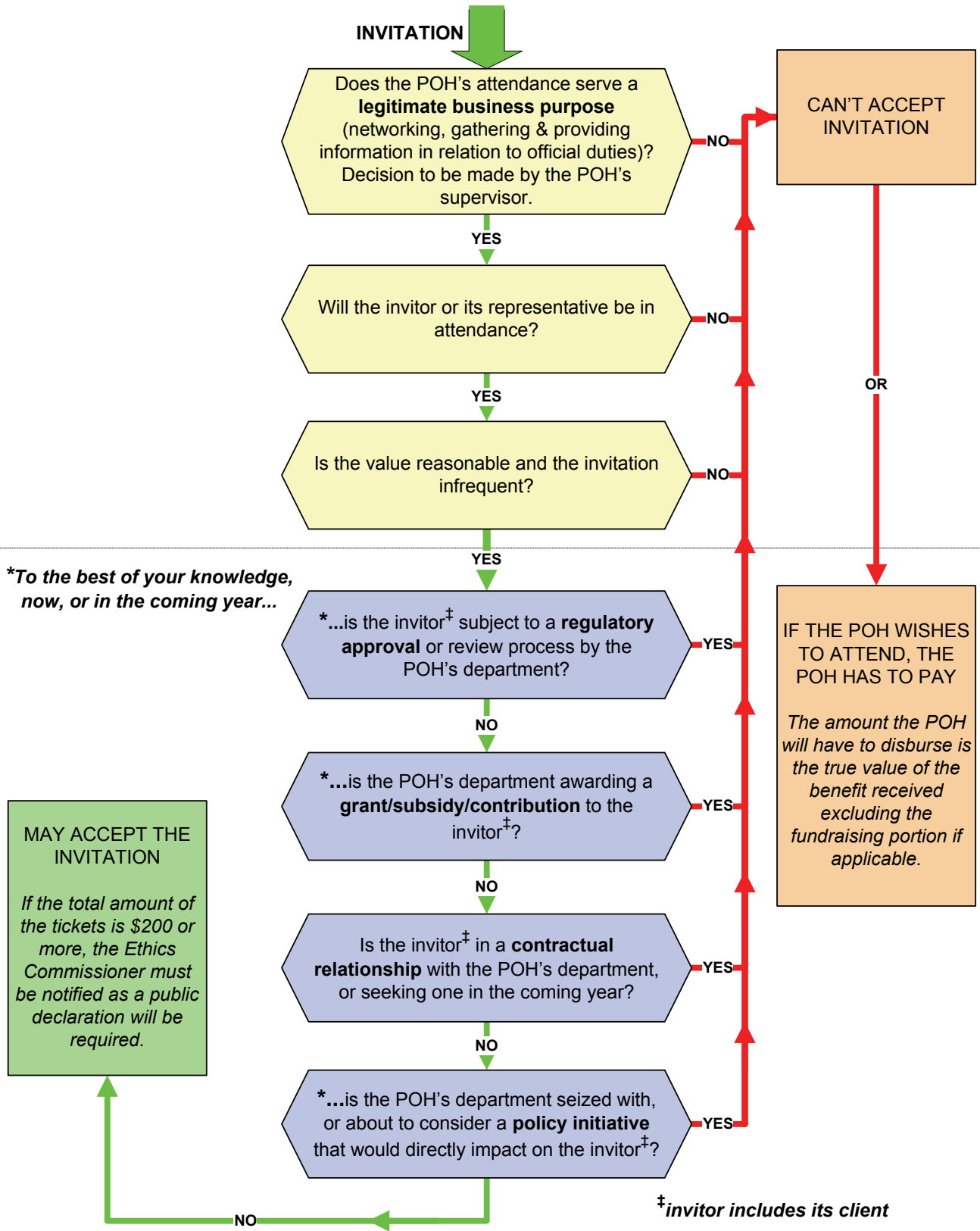
Office of the Ethics Commissioner
Bureau du commissaire à l'éthique



Positive

Conditions

Negative



N.B.: Where there is DOUBT as to the appropriateness of accepting an invitation, irrespective of its value, POH must consult the Ethics Commissioner.