

Resolute Bay 2006

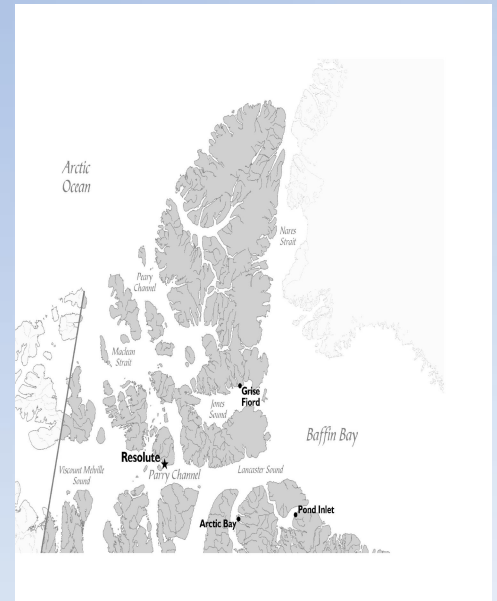
The second northernmost community in Canada, Resolute Bay is located in the High Arctic on the south coast of Cornwallis Island. The gateway to the High Arctic, Resolute Bay is the major stopover for expeditions to the North Pole and to Quttinirtaa (Ellesmere Island) National Park, and a base for scientific research.

There is a weather station as well as the Polar Continental Shelf Project research camp located within the community.

Resolute's history has the most European influence of all the Nunavut communities. The site was a critical junction along the Northwest Passage, the famed route to Asia sought by European explorers in the 18th and 19th centuries. The community is named after the HMS Resolute, a British ship that was in search of the lost Franklin expedition.

For more information about Resolute Bay, visit the Nunavut Handbook website at: <http://www.arctictravel.com>.

Getting There: First Air operates flights from Iqaluit to Resolute Bay on Wednesday and Saturday and from Edmonton via Yellowknife on Saturday. During the busier summer months, a second flight from Edmonton via Yellowknife is available on Thursdays. Please check with the airline for schedule changes.



(For larger map use zoom tool)

Community Services and Information

Population	~215
Region	Qikiqtani
Time Zone	Central
Postal Code	X0A 0V0

Population based on 2001 Stats Canada Report

RCMP General Inquiries 867-252-0123
Emergency Only 867-252-1111

Health Centre 867-252-3844
Fire Emergency 867-252-3333
Post Office 867-252-3959

Schools/College
Qarmartalik School (K-12) 867-252-3888
Arctic College 867-252-3782

Early Childhood Services
Resolute Bay Child Care Society 867-252-3888
Day Care 867-252-3600

Churches
St. Barnabas Anglican (no phone)

Community Wellness/Recreation
D N Salluviniq Gym 867-252-3746
Community Wellness 867-252-3401

Local Communications

Internorth 867-252-3737
Internet (Nunanut) 867-979-0772
Cable 867-252-3854
Community Radio 867-252-3683
Arctic Data (Polarland) 867-252-3854

Airport 867-252-3981

Hunters and Trappers Organization 867-252-3170

Tourism Office 867-252-3155

Banks

Interac banking machine available at the Co-op.

Hamlet Office 867-252-3616

For more information about Qikiqtani regional government department, Inuit organizations, industry associations and development corporations, see Qikitani regional page.

Canada

Canada-Nunavut Business Service Centre
1-877-499-5199

Nunavut

Resolute Bay Businesses

(Area code 867 unless as indicated)

(Inuit)=On NTI Inuit Firm Registry 2006

Accommodation and Dining

Narwhal Hotel

Ph: 252-3968

Fx: 252-3960

narwhal@polarnet.ca

Hotel and restaurant

Hotel & restaurant, tour operators.

South Camp Inn

Aziz Kheraj

Box 300

Ph: 252-3737

Fx: 252-3838

southcamp@netzero.southcampinn.net

Hotel and restaurant, tour operators

Qausuittuq Inns North

Ph: 252-3900

Fx: 252-3766

coophotel@polarland.com

Expediting, Contracting and Equipment Supply

953731 NWT Limited (Inuit)

Aziz Kheraj

Box 300

Ph: 252-3701

Fx: 252-3663

General contracting, aircraft loading/unloading, sea-lift, heavy equipment/vehicle renting, construction material.

Atirktaq Ltd.

Martha Kalluk

Box 13

Ph: 252-3694

Fx: 252-3119

nkalluk@aol.com

General contracting

Narwhal Arctic Services

Ph: 252-3925

Fx: 252-3649

Logistical support, vehicle/equipment rental, general contracting

Retail

Tudjaat Co-operative Limited

Raymond Jean

(Inuit)

Box 270

Ph: 252-3854

Fx: 252-3618

Retail, groceries, hardware/tools, gift shop

Technical and Communications

Nunavut Power Corporation

Ph: 252-3626

Electricity

Radio Station (FM 105.1)

Ph: 252-3664

Broadcasting

Salluviniq Tusajiuvinga

Ph / Fx: 252-3603

Office supply & service

Tourism and Culture

*Nanuk Outfitting Ltd.

Nathaniel Kalluk

Box 98

Ph: 252-3694

Fx: 252-3119

nanuk@polarland.com

Big game sport hunting, outfitting

Ootoq's & Metiq's Outfitting

Zipporah Aronsen

Box 177

Ph: 252-3630

Fx: 252-3039

zkaronsen@polarland.com

Wildlife viewing, sight seeing, camping, snowmobile trips, dog sledding

*Polar Ice Expeditions

Tony Manik

Box 175

Ph / Fx : 252-3747

polar.ice@cyberus.ca

***Resolute Bay Hunters and Trappers Organization**

Ph: 252-3170

Fx: 252-3800

Local information about the land, country foods, outfitting

South Camp Inn

Aziz Kheraj

Box 300

Ph: 252-3737

Fx: 252-3838

Eco-tourism, dog team, boat, ski-doo

** Outfitting and guiding services dependant upon annual license renewal*

Transportation and Shipping

First Air

Ph: 1-800-267-1247 or 867-252-3981

www.firstair.ca

Scheduled & charter flights

Kenn Borek Air Ltd.

Box 210

Ph: 252-3845

Fx: 252-3777

Aircraft charter, freight & cargo

Other Services

Polar Continental Shelf Project

Ph: 252-3872

Fx: 252-3605

Support for scientific projects and traditional knowledge studies

(Inuit)=On NTI Inuit Firm Registry 2006

Canada-Nunavut Business Service Centre
Inuksugait Plaza, Box 1000 Station 1198
Iqaluit, NU X0A 0H0

Ph: 1-877-499-5199 or 867-975-7860

Fx: 1-877-499-5299 or 867-975-7885

cnbsc@gov.nu.ca

www.cbbsc.org/nunavut

Canada

