

Notice to Fishers

2006 HARVESTING PLAN FOR HERRING IN THE SOUTHERN GULF OF ST. LAWRENCE (HERRING FISHING AREAS 16A-16G)

Spring and Fall Quotas in the 2006 4TVn herring fishery (t) as per traditional sharing

FLEET	SPRING	FALL
Inshore fleet in Area 16	6,859	52,330
Inshore fleet in Area 17	72	688
Gulf large seiners	2,069	15,782
TOTAL	9,000	68,800

The traditional sharing of both quotas remains unchanged in 2006 with 76.83 % for the inshore fleet and 23.17 % for large seiners.

2006 Inshore fleet quota distribution (in tonnes) in HFAs 16A to 16G as per three-year (2005-2007) rule-based quota distribution arrangement*

	SPRING	FALL
Reserve (initially distributed)	2,062	1,891
Remaining reserve **	281	99
TOTAL RESERVE	2,343	1,990
	Basic allocation including initial distribution of reserve	
16A	29	144
16B	267	24,877
16C	912	9,200 (16C & 16E)
16D	1,730	344
16E	3,072	See above
16F	195	9,005
16G	84	9,005
16A-G (June 1 – 15)	166	
16A-G (June 15 – 30)	142	

* This table reflects the three-year sharing arrangement announced on April 5, 2005.

** Remaining reserve after initial distribution. For more details on inshore quota distribution rules, please refer to Annex VIII and IX of this notice to fisher.

2006 Management measures

Spring inshore gillnet fishery (General)

- A Dockside Monitoring Program (DMP) with 100% dockside verification will be required in HFAs 16C and 16E, and a Catch Monitoring Program (CMP) with 100% radio hail and 25% verification at dockside for the other areas (HFAs 16A, B, D, F, and G). The DMP companies will have to provide daily to DFO, the amount of herring landed per fisher.
- Landings are counted against the quota in the area where the fish is landed when the said area is open. Landings are counted against the quota in the adjacent area when the fish is landed in a closed area. However, enhanced enforcement will take place.
- As announced in the May 13, 2005 News Release, the spring inshore commercial herring fishery will be closed from April 1 to June 30 in a portion of HFA 16G off the northeast coast of PEI (See Annex VII for a map of the closed area). However, the department remains open to alternative solutions to this closure and encourage the parties to work collaboratively to develop solutions in the best interest of all.
- Fishers will continue to be required to complete and submit a logbook for the fishery conducted under the bait licence.
- Other management measures for all HFAs are outlined in Annex I

Spring fishery in HFA 16C& E (Southeast NB, Western PEI and North GNS)

- A closure of the commercial fishery in the area that comprised the traditional spawning bed in Escuminac (HFA 16C) which used to generate the largest spring gillnet fishery in the mid 90's in the southern Gulf of St-Lawrence will be implemented (see map in Annex IV).
- A one day closure (from Friday 6 pm to Saturday 3 pm each week) for the commercial fishery will be implemented.
- A reduction of the number of nets per fisher to 27 nets (maximum of 420 fathoms) will be implemented in 2006. This is a reduction from the previously authorized 500 fathoms.
- A reduction of the weekly landing limit to 36,288 kg or 320 barrels (1 barrel = 113.4 kg). This is a reduction from the previous weekly limit of 45,360 kg (400 barrels).
- In order to stop the non traditional and more active interception fishery, fishers will not be permitted to have gill nets or herring on board their vessel between 9 pm and 4 am during a fishing trip (Fishing trip: means a voyage that commences at the time a fishing vessel leaves a port to engage in fishing and terminates at the time fish caught during that period are offloaded).
- A Dockside Monitoring Program (DMP) with 100% dockside verification will continue to be required in HFA 16C&E.
- A reduction of the net depth to 80 meshes will be implemented over a three year period. Fishers will be required to use nets with a maximum depth not exceeding 80 meshes in 2009.

Spring fishery in HFA 16D (Magdalen Islands)

- Fishers will continue to be required to complete and submit a logbook for the commercial and the bait fishery.

- Mandatory Catch Monitoring Program with 100 % radio hail and 25 % verification at dockside will continue.
- A weekend closure (from Saturday at noon until Sunday at noon) for both the commercial and the bait fishery will be maintained.
- The limit of 25 nets per fisher (maximum of 420 fathoms) will be maintained in 2006 except for the lagoon in the Grande-Entrée where the limit will be of 15 nets per fisher (maximum of 250 fathoms) and there will be no trip limit.
- The exclusion zone at the entrance of the Grande-Entrée Channel will be expanded compared to 2005 (see Annex III). No nets will be allowed to be set in this exclusion zone to allow herring to access the main spawning area in Grande-Entrée Bay.

Fall inshore gillnet fishery (General)

- Dockside Monitoring Program (DMP) and weekend closures are a requirement in most fishing areas.
- Gillnets are restricted to a maximum of 150 fathoms in length, 125 mesh deep (100 mesh deep in 16G), with a minimum mesh size of 66.7 mm (63.5 mm in 16A).
- Other management measures are outlined in Annex II.

Summer fishery in a portion of HFA 16E

There will be a summer herring fishery (starting on July 2, 2006) in a portion of HFA 16E with a set quota of 500 t. The objective of the summer fishery is to provide some fishing opportunities to herring fishers who have had a very limited or non-existent fishery in the spring.

To allow for a reasonable distribution of the resource among fishers, the fishery will only open in the waters inside a line from Fagan Point, N.B. to Cape Egmont, P.E.I., and the lobster line separating Lobster Fishing Areas 25 and 26A from Victoria Harbour, P.E.I. to Pugwash, N.S. (see Annex V). The remainder of 16E will remain closed until the opening of the fall fishery (August 20).

Fishers will have to choose between a summer fishery (starting on July 2) and a fall fishery (August 20 to December 31). Those who will opt for a summer fishery will be required to surrender their September to December licence conditions and request an amendment from their local Licensing Service Centre before they are authorized to participate in this fishery. The fishery will open at noon (12:00 p.m.), Atlantic Time, on July 2.

Any uncaught quota from the summer fishery will be transferred to the last period of the main roe fishery.

Refer to Annex II for other management measures.

Chaleurs Bay (HFA 16B) fall fishery

Early Fishery

As in previous years, there will be an early fishery starting July 2 until August 5. If there is any quota remaining, the total amount of uncaught quota will be transferred to the roe fishery. Refer to Annex II for other management measures.

Main roe fishery

The roe fishery will open on August 13 and will be closed on October 31 if the quota is not caught. The industry-led test fishery that was held before the roe fishery in 2005 will not be maintained in 2006.

The fishery will be closed daily between 13:00 hrs. and 16:00 hrs. (Atlantic Daylight Time) and every weekend from 13:00 hrs. on Saturday until 16:00 hrs. on Sunday (Atlantic Daylight Time). No nets will be allowed in the water during these closed periods.

Participants have agreed to improve communication between inshore fleets from Gaspésie and Northeast NB and processors to determine whether a fishery will occur or not on Friday nights. This is an initiative from industry that was initiated in 2005 aimed at stopping fishing activities on a voluntary basis. This approach will continue in 2006.

Refer to Annex II for other management measures.

Late fishery

As in past years, there will be a late fishery beginning usually 2 weeks after the roe fishery. Fishers will be limited to the area west of a rhumb line joining the Grande-Anse lighthouse in N.B. and the Pointe-à-Maquereau lighthouse in Gaspésie (Québec). The opening date of the late fishery will be determined during a conference call that will be held a few days following the closure of the roe fishery. Refer to Annex II for other management measures.

Fishermen's Bank and Northeast PEI (HFA 16G) fall fishery

The fall fishery in HFA 16G will occur in two distinct periods and zones within HFA 16G to allow for a reasonable distribution of the resource among fishers.

Fishers will have to choose between a Northside and a main roe (Fisherman's Bank) fishery. Those who opt to fish in the northern portion of HFA 16G, as identified in Annex VI, (the Northside of P.E.I.), can apply for conditions of licence at the P.E.I. Licensing Service Centre in Charlottetown. They will be required to remain on the Northside for the remainder of the season. The Northside fishery will begin at 18:00 hrs. on July 16, and fishers will fish against an 800 t reserve quota until August 20 or until the 800 t is caught. On August 20, 18:00 hrs., these fishers will fish against the remaining 16G quota but must remain within the defined area, until the fishery closes.

The main roe fishery (Fishermen's Bank) will begin at 18:00 hrs. on August 20 and will continue until the quota is caught and the fishery closes. Fishers fishing in the main roe fishery will not be allowed to fish on the Northside.

Refer to Annex II for other management measures.

Bait fishery

Bait licences are issued upon request to fishers who hold a licence for a species and gear that requires bait. Since 2003, herring and mackerel bait licences have been combined to facilitate

enforcement work by fishery officers. With the bait licence, a fisher may only fish for their own use up to a maximum of 50 fathoms of gillnets.

The minimum mesh size will be 57.1 mm from January 1 to June 30 and 66.7 mm (63.5 mm in 16A) from July 1 to December 31. In 2006, the maximum quantity of herring or mackerel or the combination of both species a fisher is permitted to catch and retain at any time is 907 kg or 1.076 m³. in total.

While fishing under the authority of a commercial herring, mackerel or gaspareau licence, bait licences are not valid. Furthermore, a fisher cannot fish under the authority of a bait licence in the same calendar day that they have landed herring, mackerel or gaspareau under the authority of a commercial licence. It is strictly forbidden to sell any species of fish caught under the authority of a bait licence.

As in 2005, bait fishers are responsible for reporting catch and effort information on a Bait Monitoring Document, and to ensure catch information is entered in the DFO database.

Large seiners fishery

- The spring season runs from January 1 to June 30.
- A cap on fall spawners of 7,891 t (50% of the large seiners 4TVn fall spawners quota of 15,782 t) in the Chaleurs Bay is maintained. The composition of the catches will be used to determine the quantity of spring and fall spawners to be fished in the Chaleurs Bay.
- The use of a mid-water trawl for three seiners to fish herring and mackerel in HFA 16 (excluding Chaleurs Bay) from April 1 to December 31 is authorized with the appropriate monitoring and control mechanisms to prevent high catches of small fish.
- Uncaught quota from the spring will be transferred to the fall, and access to the northern portion of 4Vn (HFA 17) will be authorized. However, the amount and the conditions under which the fishery will take place in 4Vn will be addressed in the Maritimes Region Herring Management Plan.
- All vessels must be equipped with a functional Vessel Monitoring System during fishing activities.
- There will be a minimum of 10 % at-sea observer coverage during fishing activities.
- As announced in the May 13, 2005 News Release, the large seiner herring fishery will be closed from January 1 to December 31 in a portion of HFA 16G off the northeast coast of PEI (See Annex VII for a map of the closed area). However, the department remains open to alternative solutions to this closure and encourage the parties to work collaboratively to develop solutions in the best interest of all.

ANNEX I

SPRING INSHORE MANAGEMENT MEASURES BY HFA - 2006

Fishing Area	Dockside Monitoring Program (DMP) or Catch Monitoring Program (CMP)	Quota	Period	Net (size / mesh deep / length)	Weekend Closures	Trip Limit
16A – Île Verte	CMP - declaration of 100% of catches through the radio and dockside verification for 25% of landings	29	January 1 to June 15	57.1mm min / 125 meshes / 500 fath.	None	No Limit
16B – Baie des Chaleurs (fixed gear)	CMP - declaration of 100% of catches through the radio and dockside verification for 25% of landings	267	January 1 to June 15	57.1mm min / 125 meshes / 500 fath.	None	No Limit
Small Seiners		Up to 22.75% (61 t) of 16B spring allocation	January 1 to June 15	N/A	None	No Limit
16 C– Escuminac	DMP	111	April 1 –5h59 April 23	57.1mm min / 125 meshes / 420 fath.	18:00 Friday to 15:00 Saturday, No nets/herring on board during a fishing trip between 21:00 to 4:00 every day	Weekly limit of 36,288 kg
		690	6h00 April 23 – 5h59 May 16			
		111	6h00 May 16 – June 15			
16D – Magdalen Islands	CMP - Well-keeping of a logbook, declaration of 100% of catches through the radio and dockside verification for 25% of landings	1,730	January 1 to June 15	57.1mm min / 125 meshes / 420 fath. (250 fath. inside the lagoon)	Noon Saturday to noon Sunday	No Limit
16E – Western PEI, south-eastern NB and northern GNS	DMP	301	April 1 –5h59 April 23	57.1mm min / 125 meshes / 420 fath.	18:00 Friday to 15:00 Saturday, No nets/herring on board during a fishing trip between 21:00 to 4:00 every day	Weekly limit of 36,288 kg
		2,470	6h00 April 23 – 5h59 May 16			
		301	6h00 May 16 –June 15			
16F – Pictou	CMP - declaration of 100% of catches through the radio and dockside verification for 25% of landings	195	January 1 to June 15	57.1mm min / 150 meshes / 500 fath.	None	No Limit
16G – Fishermen’s Bank	CMP - declaration of 100% of catches through the radio and dockside verification for 25% of landings	84	January 1 to June 15	57.1mm min / 125 meshes / 500 fath.	None	No Limit
16A-G	CMP - declaration of 100% of catches through the radio and dockside verification for 25% of landings	166	June 1 – June 15	57.1mm min / 125 meshes / 500 fath.	None	No Limit
		142	June 16 – June 30		None	No Limit

ANNEX II

FALL INSHORE MANAGEMENT MEASURES BY HFA – 2006

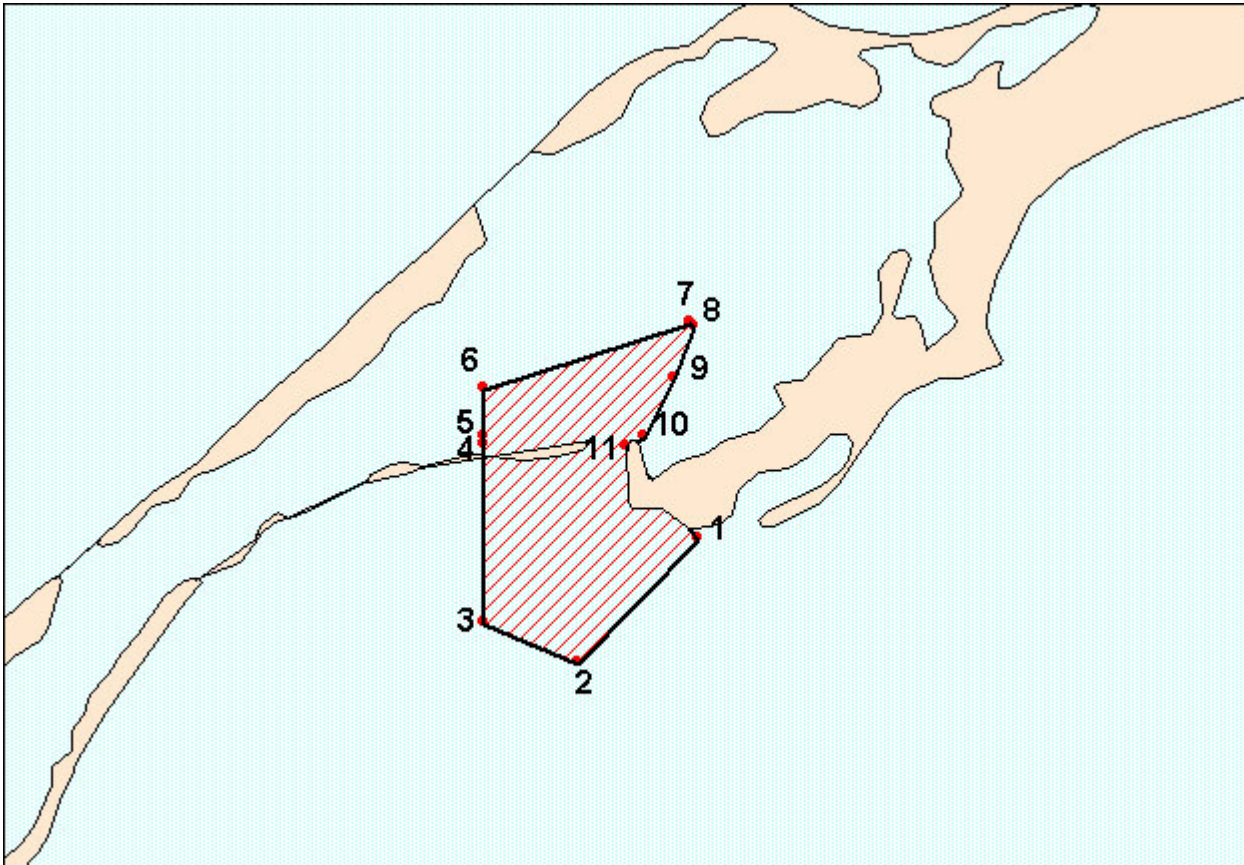
Fishing Area	DMP/CMP	Quota	Period	Net (size / mesh deep / length)	Weekend Closures	Trip Limit
16A – Île Verte	CMP - declaration of 100% of catches through the radio and dockside verification for 25% of landings	144	July - December	63.5 mm min / 125 mesh / 150 fath.	None	One landing a day of 9,072 kg
16B – Baie des Chaleurs (Fixed Gear)	DMP in NB CMP in P.Q. - declaration of 100% of catches through the radio and dockside verification for 25% of landings	689 (1)	July 2 – August 5	66.7 mm min / 125 mesh / 150 fath.	None	One landing a day of 9,072 kg
		23,019	Roe fishery: Aug. 13 – Oct. 31		13:00 Saturday to 16:00 Sunday 13:00 to 16:00 every day	One landing a day of 9,072 kg
		413	Late fishery – 2 weeks after the roe fishery		None	One landing a day of 9,072 kg
Small Seiners	DMP	756	July - December	N/A	N/A	N/A
16 C&E –Escuminac, Western PEI and northern GNS	DMP	500 (2)	July 2 – Aug 19	66.7 mm min / 125 mesh / 150 fath.	18:00 Friday to 17:59 Sunday	One landing a day of 5,670 kg
		8,700 (Split to be determined)	To be determined		To be determined	To be determined
16D –Magdalen Islands	CMP - Well-keeping of a logbook, declaration of 100% of catches through the radio and dockside verification for 25% of landings	344	July 1 – December 31	66.7 mm min / 125 mesh / 150 fath.	Noon Saturday to Noon Sunday	One landing a day of 9,072 kg
16F – Pictou	DMP	9,005	To be determined	66.7 mm min / 125 mesh / 150 fath.	To be determined	To be determined
16G –Northside	DMP	800 (3)	July 16 – Dec 31	66.7 mm min / 125 mesh / 150 fath.	18:00 Friday to 17:59 Sunday	More than one landing a day but not more than 6,804 kg per day
16G – Fishermen’s Bank		8,205	Aug. 20– Dec 31	66.7 mm min / 100 mesh / 150 fath.	15:00 Friday to 14:59 Sunday	

1 – If any quota remains from the early fishery, the total amount remaining will be added to the roe fishery.

2 – A portion of 16E is open. Fish caught in that portion of 16E must be landed in that open area.

3 – Reserve quota to be fished in the Northern portion of HFA 16G until Aug. 20. On Aug. 20, any uncaught portion will return to the global 16G allocation.

ANNEX III
Exclusion zone in the Grande-Entrée Channel in HFA 16D

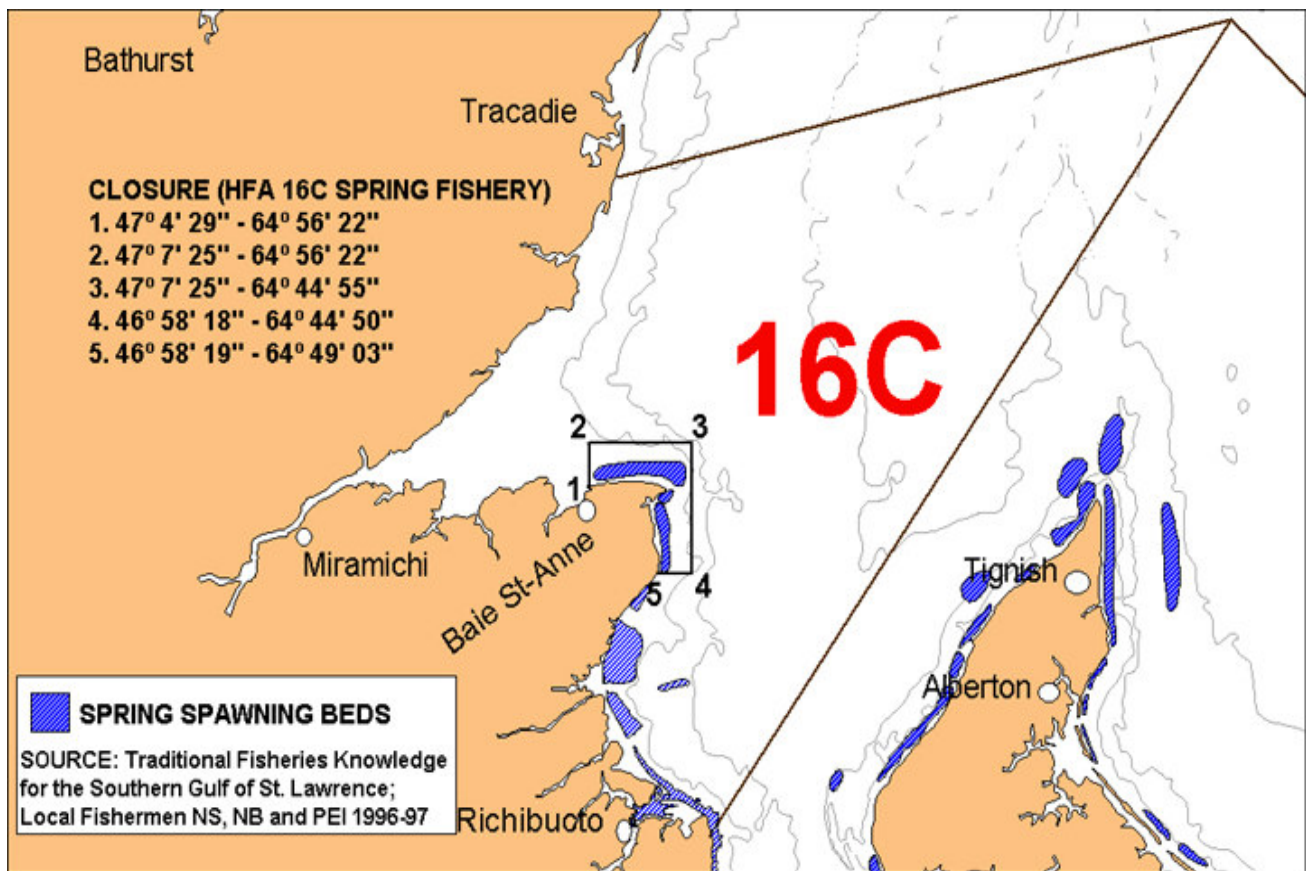


The exclusion zone in the Grande-Entrée Channel is defined as the portion of Herring Fishery Area 16D inside a line drawn from:

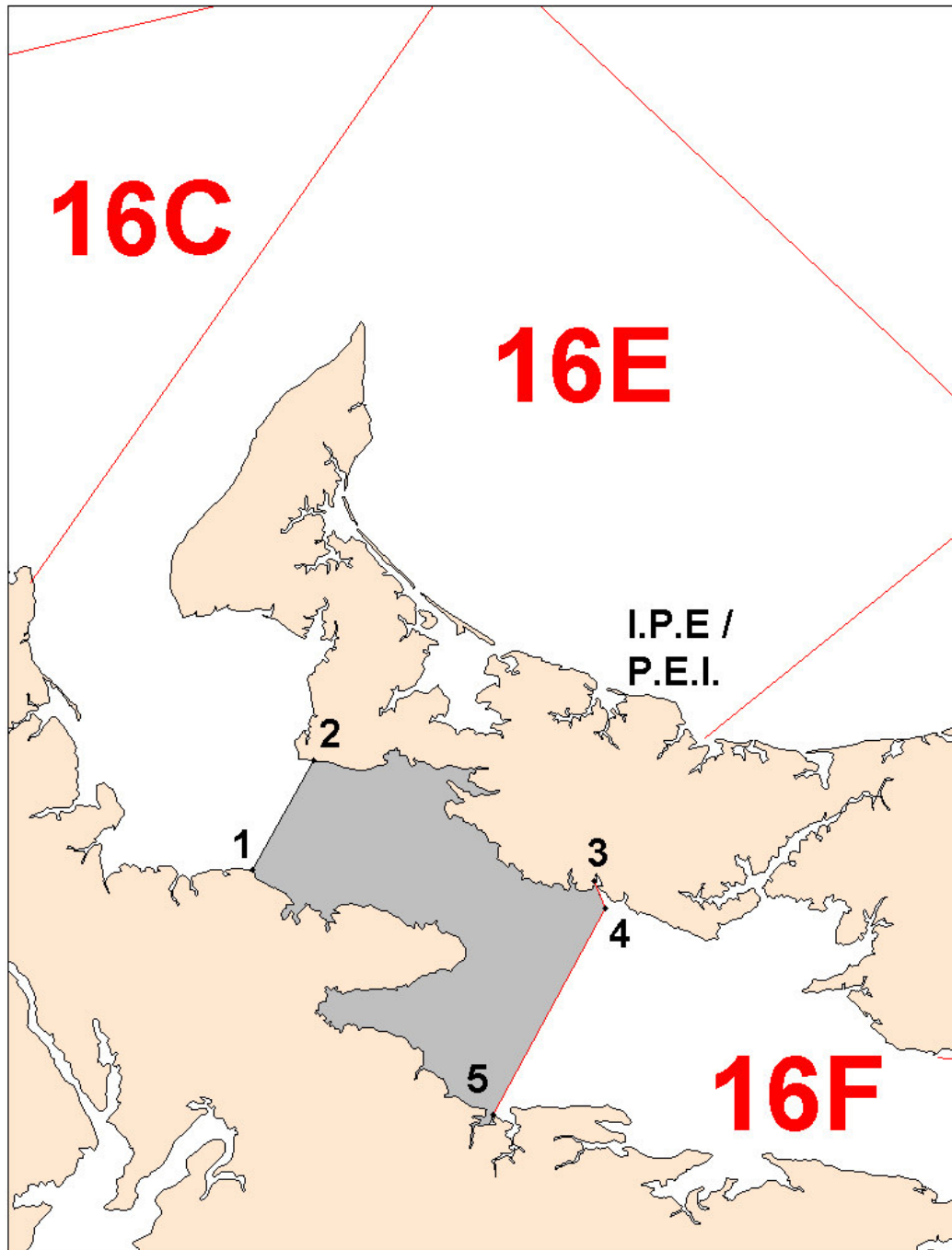
1. 47° 32' 30" N - 61° 32' 39" W
2. 47° 31' 16" N - 61° 34' 26" W
3. 47° 31' 40" N - 61° 35' 48" W
4. 47° 33' 26" N - 61° 35' 48" W
5. 47° 33' 31" N - 61° 35' 48" W
6. 47° 34' 00" N - 61° 35' 48" W
7. 47° 34' 39" N - 61° 32' 46" W
8. 47° 34' 37" N - 61° 32' 43" W
9. 47° 34' 06" N - 61° 33' 00" W
10. 47° 33' 31" N - 61° 33' 27" W
11. 47° 33' 25" N - 61° 33' 43" W

ANNEX IV

Closure of the commercial fishery in the area that comprised the traditional spawning bed in Escuminac (HFA 16C)



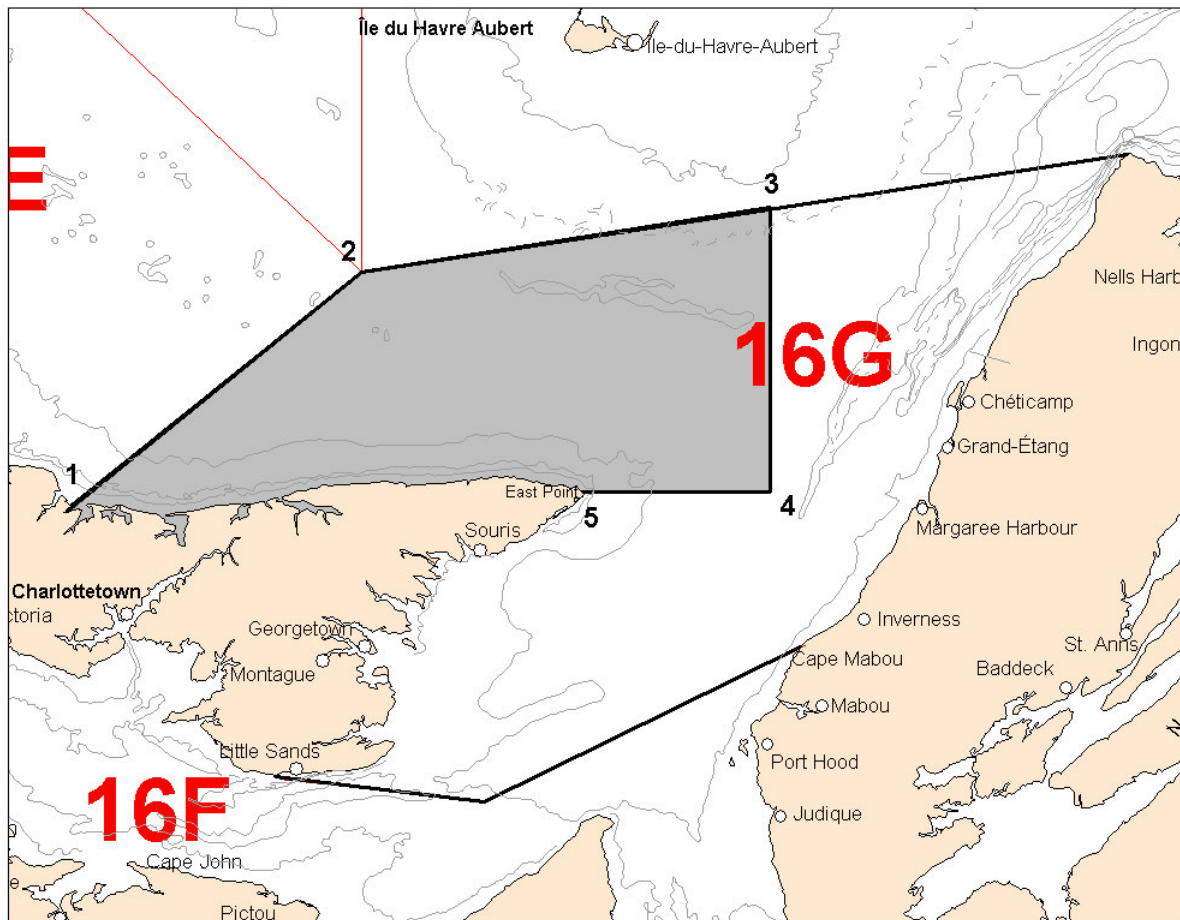
ANNEX V
Summer fishery in a portion of HFA 16E



The summer fishery is to be conducted in that portion of 16E inside lines drawn from:

- | | | |
|----|---------------|-----------------------------|
| 1. | 46° 14' 00" N | 64° 14' 00" W (FAGAN POINT) |
| 2. | 46° 24' 00" N | 64° 06' 00" W (CAPE EGMONT) |
| 3. | 46° 12' 58" N | 63° 29' 26" W |
| 4. | 46° 10' 35" N | 63° 28' 03" W |
| 5. | 45° 51' 45" N | 63° 42' 42" W |

ANNEX VI
Northern portion of HFA 16G

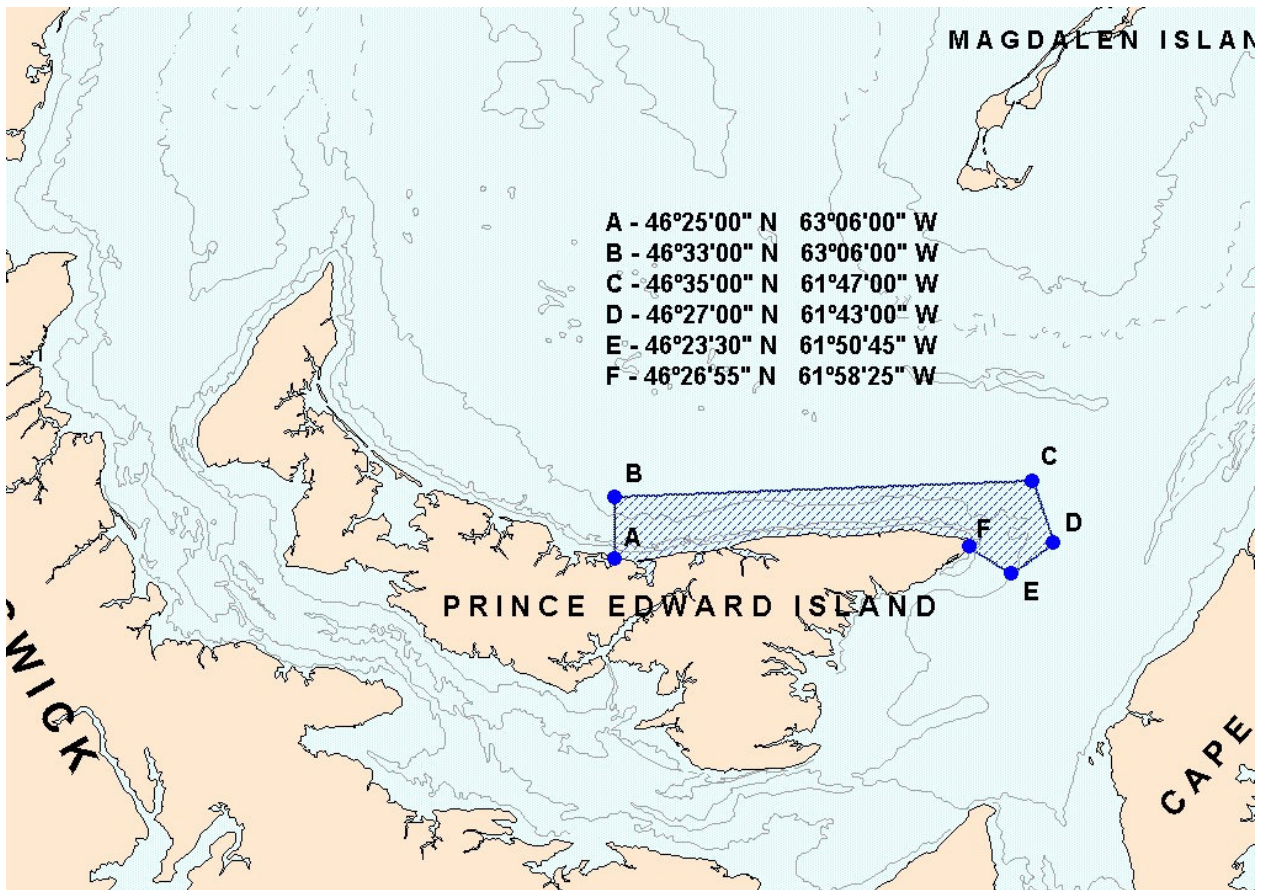


The Northern portion of HFA 16G is defined as that portion of Herring Fishing Area 16G inside a line drawn from:

1. 46° 26' 00" N - 63° 15' 00" W
2. 46° 50' 00" N - 62° 32' 00" W
3. 46° 56' 42" N - 61° 30' 00" W
4. 46° 26' 55" N - 61° 30' 00" W
5. 45° 26' 55" N - 61° 58' 25" W (EAST POINT)

ANNEX VII

Closure of the commercial inshore herring fishery off northeast PEI (April 1 to June 30) and of the large seiner herring fishery (year-round)



ANNEX VIII - SPRING INSHORE FISHERY

Rules for a 3 year sharing plan (2005-2007)

Note: All calculations are based on the 2006 inshore TAC

1. Each HFA will maintain its existing quota share at the end of the 3 year sharing plan.
2. Establishment of 2,343 t (33.8% of total inshore TAC) reserve by removing 18.27% (1,266 t) from the top of the total inshore quota before distribution to HFAs according to actual shares and by removing 50% of the HFA 16A and 16C allocation and 25% of HFA 16B, 16G and 17* allocation after the initial distribution. (*HFA 17 will provide 25% (18 t) of its allocation on a risk management basis to supply the reserve)
3. A 2,062 t (88%) portion of the reserve will be initially distributed to HFA 16D (1,196 t or 58%), HFA 16E (804 t or 39%) and HFA 16F (62 t or 3%).
4. The initial reserve distribution will be evaluated yearly to take in consideration any conservation concerns.
5. Upon request, HFA 16A, 16B, 16C and 16G will receive blocks of 10% of their yearly allocation from the remaining 281 t (12%) reserve when their allocation has been caught before June 1st.
6. The fishery in HFA 16D, 16E and 16F will be closed once the allocation for the year (basic allocation) has been caught before June 1st.
7. The fishery in HFA 16A, 16B, 16C and 16G will be closed when the basic allocation is caught and if the remaining reserve has been exhausted before June 1st.
8. On June 1, 100% of the remaining reserve will be allocated to the 16A-G quota for the period June 1- June 15.
9. Starting on June 1, a fisher may fish against the HFA 16A-G, June 1-15 quota, if his or her area quota is caught (same approach as in the past, also applies to HFA 16D).
10. On June 15, uncaught area quotas and remaining reserve are transferred to the June 16-30 quota. Quota overruns will be deducted from the June 16-30 quota.
11. The spring inshore fishery will be closed when the total inshore quota has been caught.
12. If the allocation for HFA 16A, 16B, 16C or 16G proves insufficient due to an apparent increase in abundance, the scenario will have to be revised.
13. Sharing scenario will be evaluated yearly and adjusted at the end of the 3 year term if required.

SPRING SHARING SCENARIO BASED ON ESTABLISHMENT OF A RESERVE
(2006 REFERENCE INSHORE TAC = 6,931 t)

HFA	CURRENT SHARE	Quota based on TAC-1,266 t	Quota after deduction from HFA 16A, B, C, G and 17	Initial distribution of 88% of the reserve	Basic Allocation	Rules for distributing the remaining 12% of reserve (281 t)
16A	1.03%	58	29		29	Allocated upon request in blocks of 10% of HFA allocation (3 t)
16B	6.36%	356	267		267	Allocated upon request in blocks of 10% of HFA allocation (27 t)
16C	32.60%	1,824	912		912	Allocated upon request in blocks of 10% of HFA allocation (91 t)
16D	9.54%	534	534	1,196	1,730	final
16E	40.56%	2,268	2,268	804	3,072	final
16F	2.39%	133	133	62	195	final
16G	2.01%	113	84		84	Allocated upon request in blocks of 10% of HFA allocation (8 t)
16A-G (1-15 JUNE/JUIN)	2.97%	166	166		166	100% of remaining reserve allocated on June 1
16A-G (15-30 JUNE/JUIN)	2.54%	142	142		142	
17		72	72		72	final
TOTAL	100%	5,665	4,607	2,062	6,669	

* HFA 17 will provide 25% (18 t) of its allocation on a risk management basis to supply the reserve.

ANNEX IX - FALL INSHORE FISHERY

Rules for a 3 year sharing plan (2005-2007)

Note: All calculations are based on the 2006 inshore TAC.

1. Each HFA will maintain its existing quota share at the end of the 3 year sharing plan.
2. Establishment of a 1,990 t (3.75% of the total inshore TAC) reserve consisting of 65% of the HFA 16A allocation, 80% of the HFA 16D allocation and *50% of the HFA 17 allocation. (*HFA 17 will provide 50% (344 t) of its allocation on a risk management basis to supply the reserve).
3. A 1,891 t (95%) portion of the reserve will be initially allocated to HFA 16C&E (945 or 50%), HFA 16F (473 t or 25%) and HFA 16G (473 t or 25%).
4. The initial reserve distribution will be evaluated yearly to take in consideration any conservation concerns.
5. Upon request, HFAs 16A and 16D will receive blocks of 10% of their yearly allocation from the remaining 99 t (5%) reserve when their allocation has been caught prior to August 28.
6. HFA 16 B will receive any remaining reserve on August 29.
7. The fishery in HFA 16C&E, 16F and 16G will be closed once the allocation for the year (basic allocation) has been caught.
8. The fishery in HFA 16A, 16B and 16D will be closed when their basic allocation is caught and if the remaining reserve has been exhausted.
9. The fall inshore fishery will be closed when the total inshore quota has been caught.
10. If the allocation for HFA 16A or 16D proves insufficient due to an apparent increase in abundance, the scenario will have to be revised.
11. Sharing scenario will be evaluated yearly and adjusted at the end of the 3 year term if required.

FALL SHARING SCENARIO BASED ON ESTABLISHMENT OF A RESERVE
(2006 REFERENCE INSHORE TAC = 53,018t)

HFA	CURRENT SHARE	Quota based on 2006 allocation	Quota after deduction from HFA 16A, 16D and 17	Initial distribution of 95% of the reserve	Basic allocation	Rules for distributing the remaining 99 t (5%) reserve
16A	0.79%	413	144		144	Allocated upon request in blocks of 10% of HFA allocation (14 t)
16B	47.54%	24,877	24,877		24,877	Remaining reserve allocated on August 29
16C&E	15.77%	8,255	8,255	945	9,200	final
16D	3.29%	1,721	344		344	Allocated upon request in blocks of 10% of HFA allocation (34 t)
16F	16.30%	8,532	8,532	473	9,005	final
16G	16.30%	8,532	8,532	473	9,005	final
17		688	688		688	final
TOTAL	100%	53,018	51,372	1,891	53,263	

* HFA 17 will provide 50% (344 t) of its allocation on a risk management basis to supply the reserve.

FOR MORE INFORMATION, PLEASE CONTACT YOUR LOCAL AREA OFFICE:

Michel Albert Resource Management Fisheries and Oceans Tracadie, NB (506) 395-7718	Janet Smith Resource Management Fisheries and Oceans Charlottetown, PEI (902) 566-7815
Paul Boyd Resource Management Fisheries and Oceans Antigonish, NS (902) 863-5670	David Courtemanche Resource Management Fisheries and Oceans Gaspé, QC (418) 368-5559
Sylvette Leblanc Resource Management Fisheries and Oceans Cap-aux-Meules, QC (418) 986-2095	