

# Central Coast Areas 7 to 10

STAD

Post Season Review

Dec 3, 2005

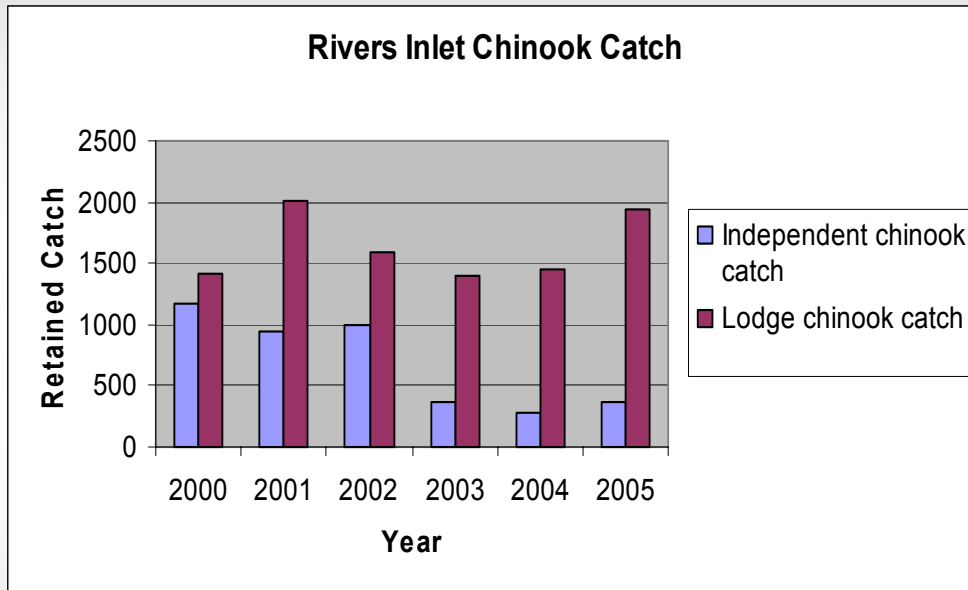
# Central Coast Chinook 2005 Program Review

- Rivers Inlet Creel Survey and Independent catch and effort estimates
- Rivers Inlet Logbook program
- Wannock Deadpitch/Estuary Work
- Rivers Aerial Surveys/Stream Walks and Owikeno Tributary Counts

# Rivers Inlet 2005 Creel Survey

- Abbreviated program July 30-Aug 14
- Independent catch estimate of 360 chinook
- Slightly higher catch and CPUE than 2004, very similar to 2003
- Coho catch estimated under 200

# Rivers Chinook Sportfishery



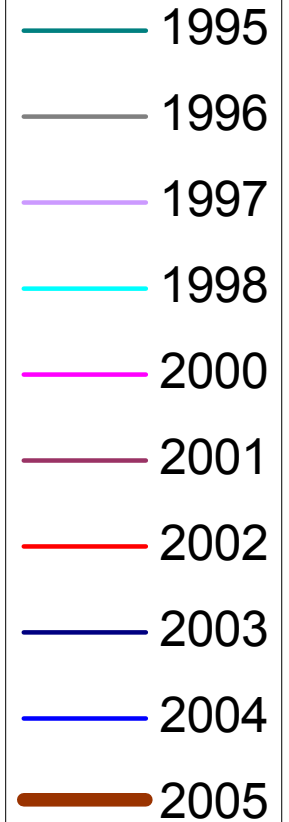
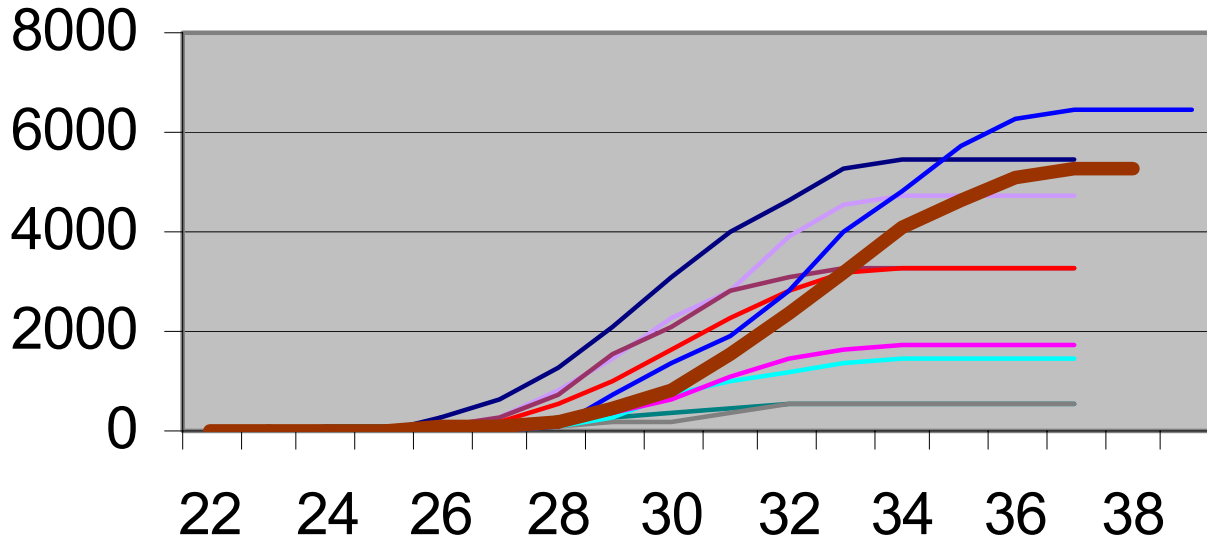
- Lodge catch of 1,948 chinook was highest since 1999.
- Independent catch of 360 was also higher than 2004 (280)

# Creel Coho Overview

- Lodge catch was reported at 13,358 while independent catch was estimated at less than 200.
- Creel data suggests a lower independent CPUE for retained coho over 2004.

## Area 7 Chinook Cumulative Catch

Number of chinook









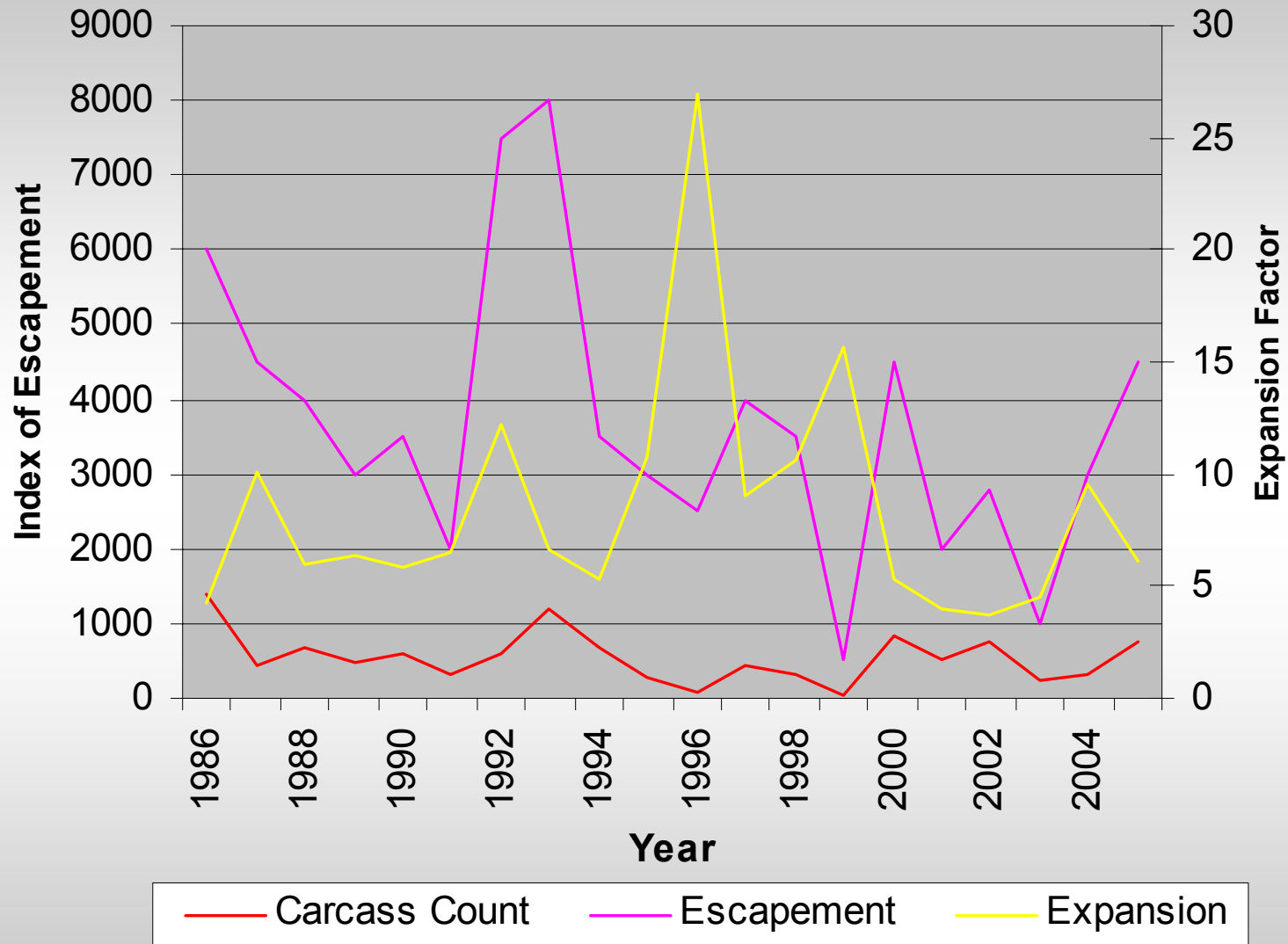
# Wannock Chinook Deadpitch

- Program began Oct 27 and is now complete
- A total of 737 chinook were recovered(380 males and 357 females)
- The male/female ratio shows a higher proportion of females than observed in recent years.
- Final escapement is estimated at 4500

# Estuary Carcass Recovery

- Chinook run appeared to be about a week earlier than in 2004, Sockeye observations suggest improvement
- Scales were taken from 145 chinook, DNA from 125
- Estuary recovery of carcasses coincided with extreme low tides in mid November (242 recovered)
- A total of 8 CWT fish were recovered

# Wannock Chinook Deadpitch Recoveries and Index of Escapement



# Chinook Broodstock Collection Summary

- October 18-22
- Successfully captured 245 chinook
- 30 males and 30 females were killed and spawned while the rest were released with a punch
- In total 62 females and 89 males were punched and released
- Chinook in the deadpitch were observed for punches(4 observed)

# Possible Wannock Chinook Mark-Recapture 2006

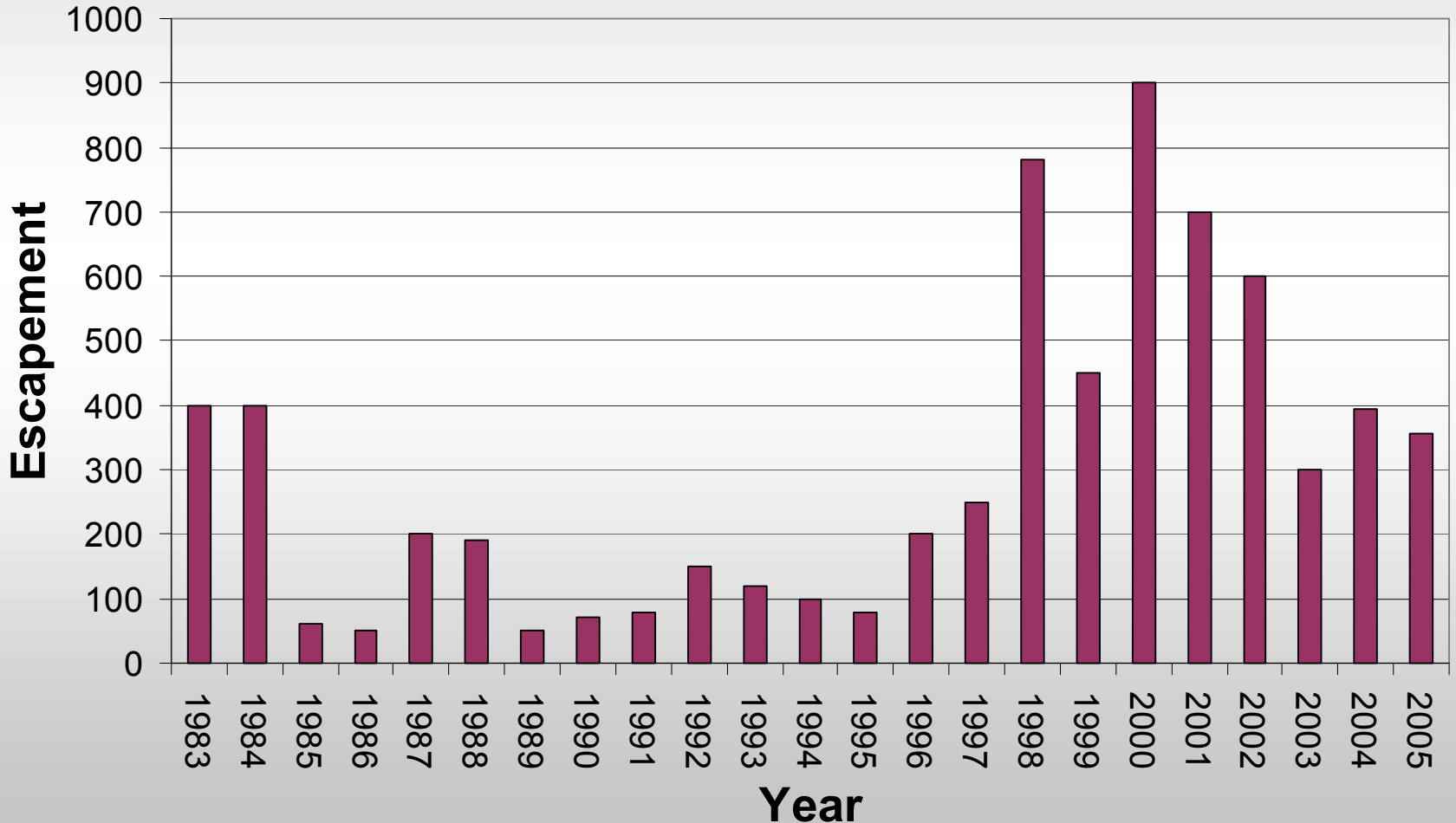
- 1) PSC Northern Endowment Funding
- 2) Supplement studies conducted in early 1990's
- 3) Calibrate current escapement index with statistically rigorous population estimation methodology
- 4) Aid in development of biologically-based escapement goal

# Owikeno Lake Chinook Tributary Stocks

- Early timed tributary stocks are considered to be genetically distinct from Wannock fall run chinook
- These chinook arrive in river early to mid August and spawning is completed by the end of September
- Chuckwalla/Kilbella chinook are also “early” summer stocks and are grouped with the Owikeno tributary stocks based on run timing and genetic similarity
- Aerial Surveys/Stream Walks are conducted and escapement estimates are calculated for these streams to determine status as well as trends
- Streams flown include: Kilbella/Chuckwalla, Tzeo, Ashlum, Dallery, and Neechanz

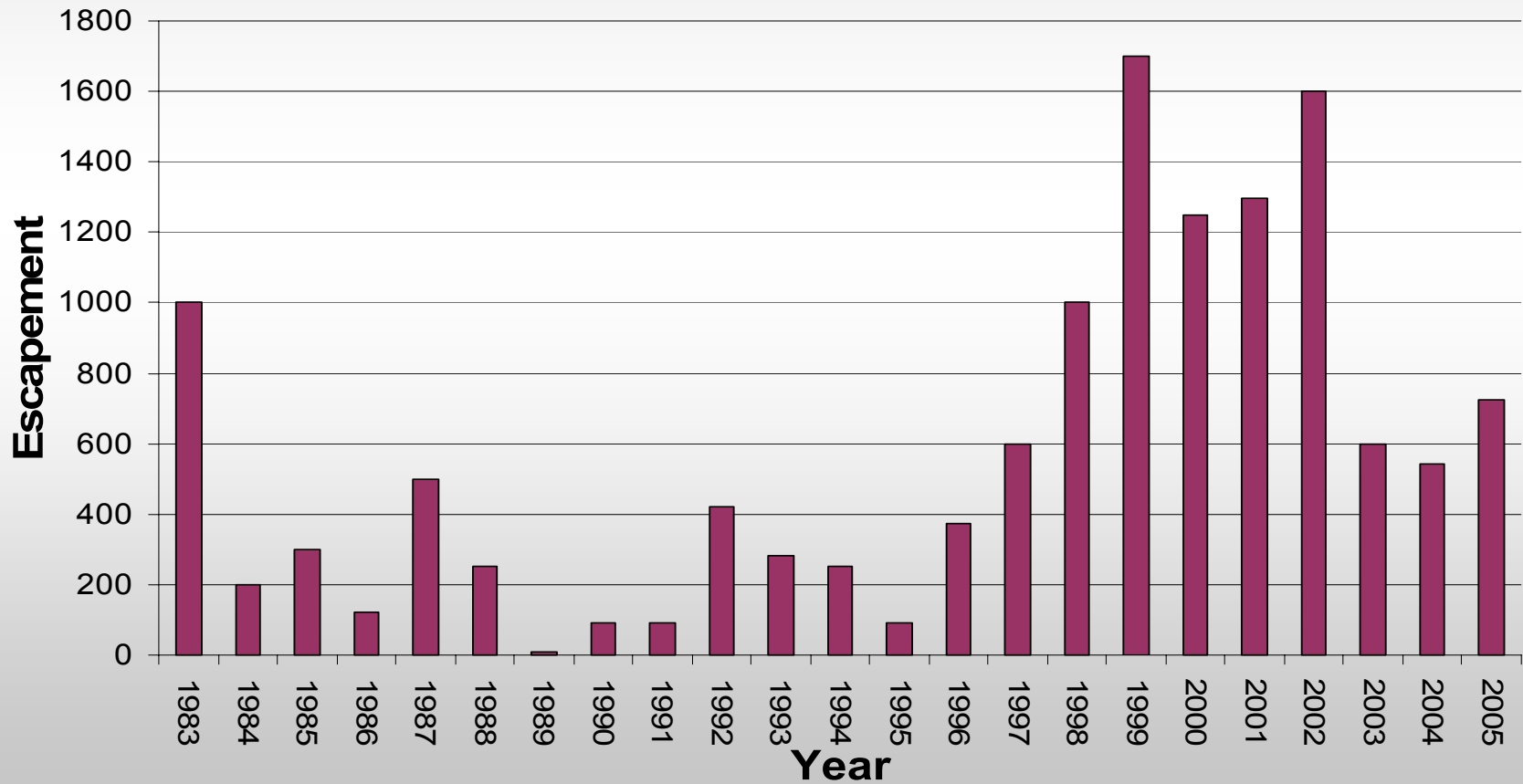
# Escapement trends of key Area 9 chinook indicators

## Chuckwalla Chinook



# Escapement trends of key Area 9 chinook indicators

## Kilbella Chinook





# North Coast Troll Chinook Catches 2005

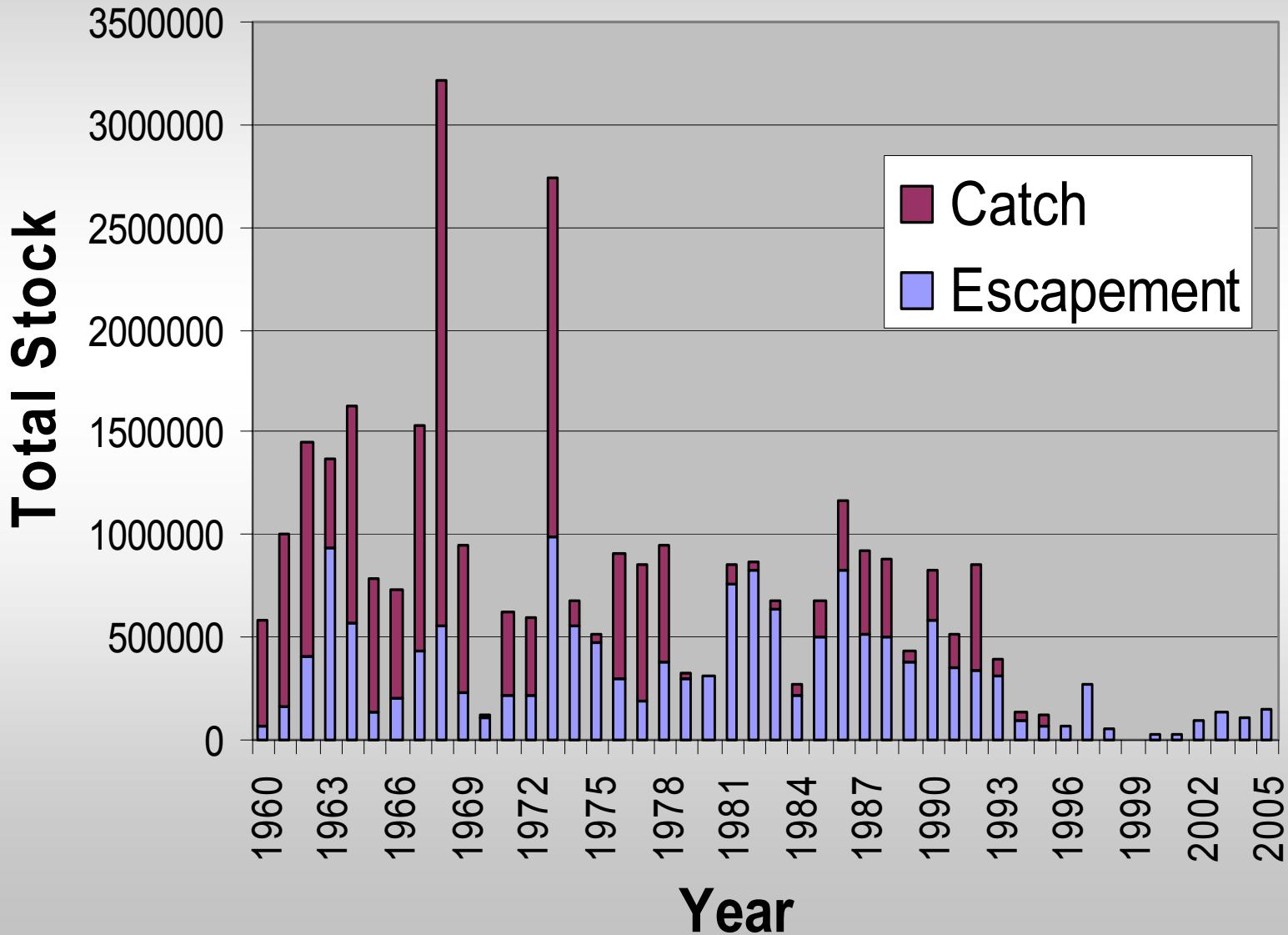
- Data for the period Oct 1, 2004 - Sept 30, 2005
- Estimated total catch of approx. 175K
- No Wannock Chinook were detected in DNA sampling
- Estimated Northern Mainland catch of 7,777.

Ashlum	Atnarko
Chuckwalla	Devereux
Hirsch	Kilbella
Kildala	Kitimat
Klinaklini	Marble@CC
Neechanze	Nusatsum
Saloompt	U._Atnarko
Wannock	

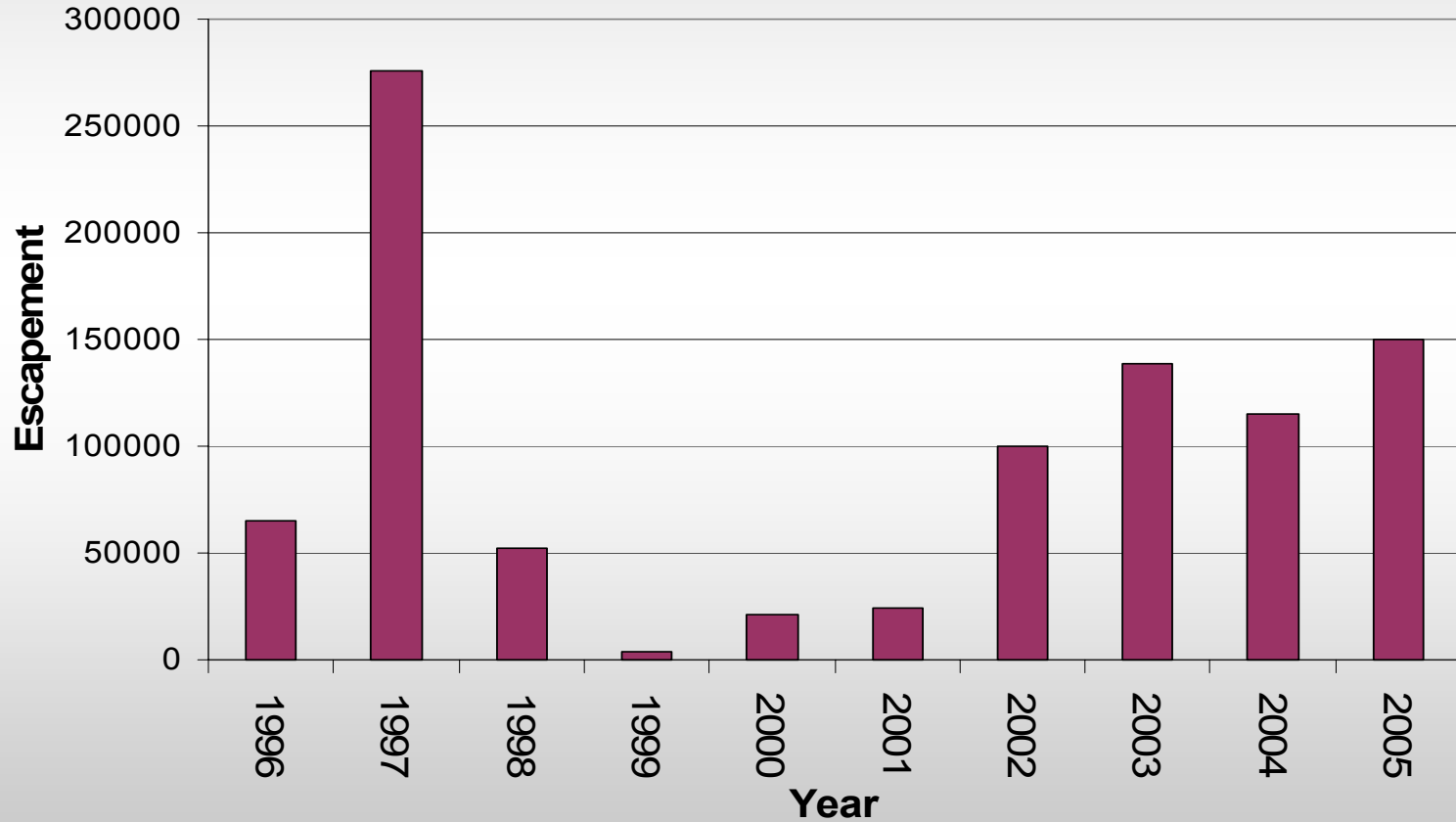
# Rivers/Smiths Sockeye Returns

- Owikeno tributaries were enumerated using stream walks and helicopter flights
- A total of 150,000 sockeye were estimated to have returned to this system in 2005 (forecast for 2006 is 190,000)
- Docee fence count was 15,000 (forecast for 2006 is 220,000)

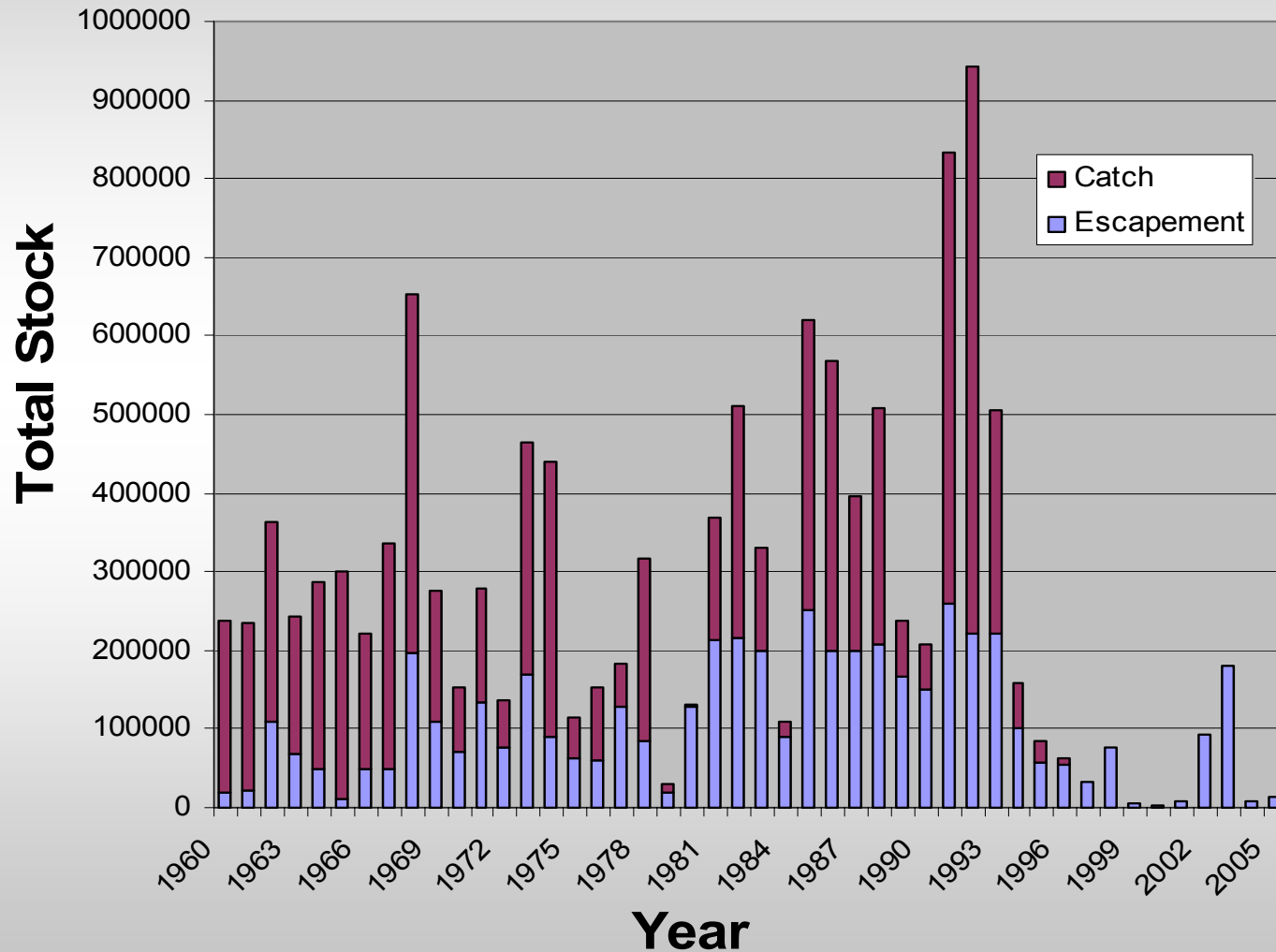
# Area 9 Sockeye Catch and Escapement



# Recent Sockeye Escapements to Owikeno Lake



# Area 10 Sockeye Catch and Escapement



# Recent Sockeye Escapements to Long Lake

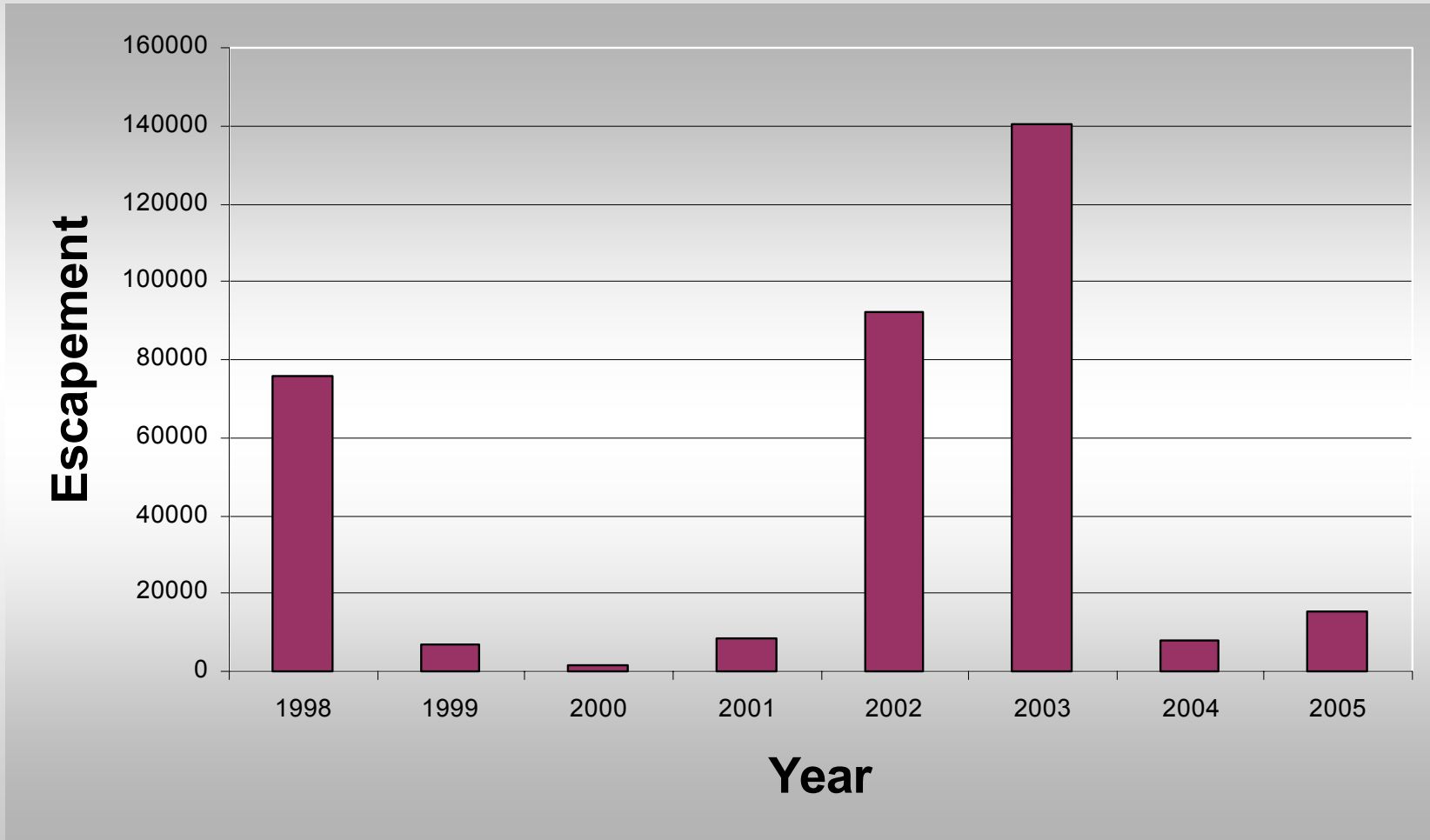


Table 3. Summary of pre-season stock size forecasts for 2005.

Species	Stat Area	River or Lake	Escapement Target	Forecasts for reference probabilities				Forecasting Model
				25%	50%	75%	90%	
Sockeye	8	Atnarko	75,000		<b>22,300</b>	<b>12,600</b>		5-yr average
	8	Kimsquit	30,000					
	9	Owikeno	Under Review		<b>190,000</b>			5-yr average
	10	Long	Under Review		<b>220,000</b>			5-yr average

# Coho Overview

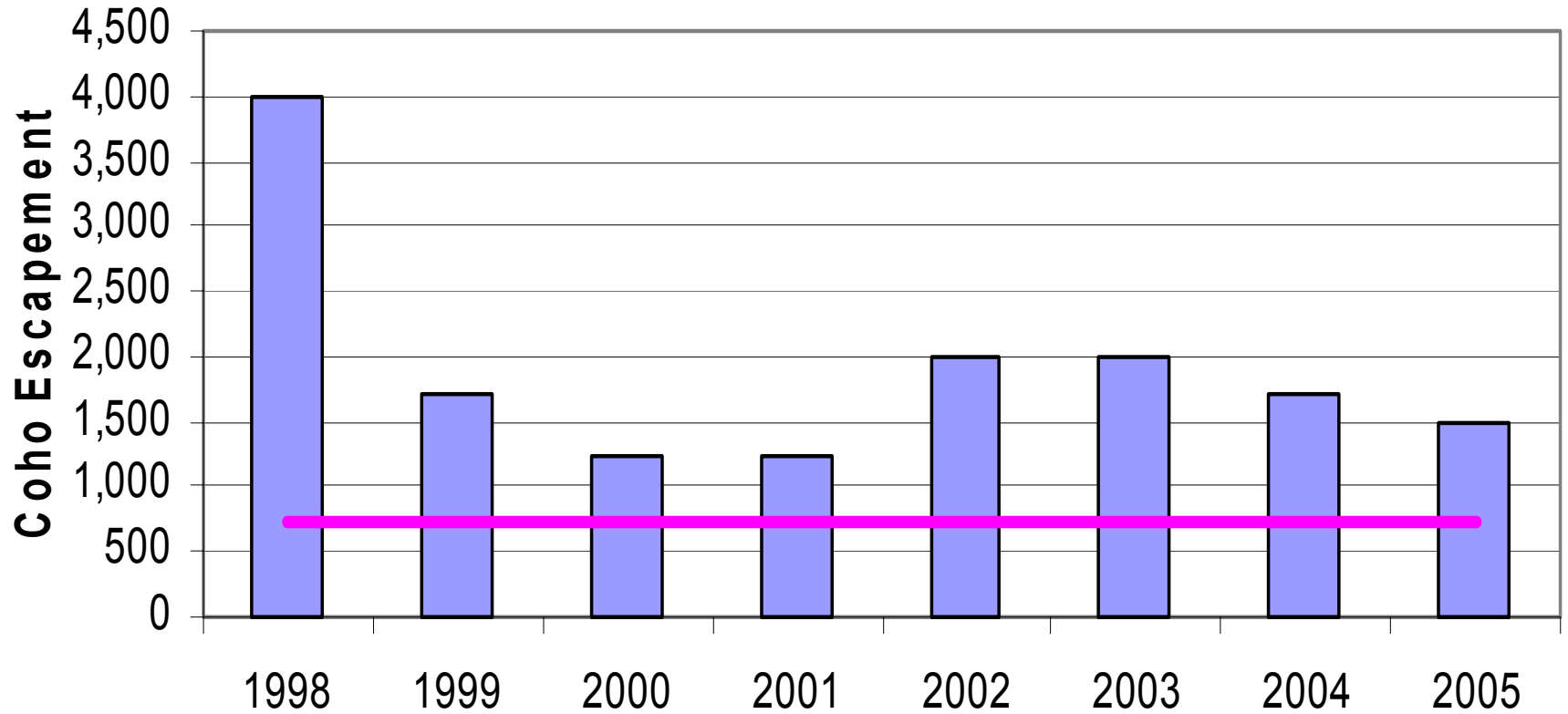
- Bella Coola Valley returns were similar to last year, although the Atnarko coho run was down considerably
- The Docee return was excellent at nearly 20,000
- Rivers Inlet returns to Chuckwalla were similar to recent years with early escapement estimated above 2,000
- Kilbella coho estimate is pending



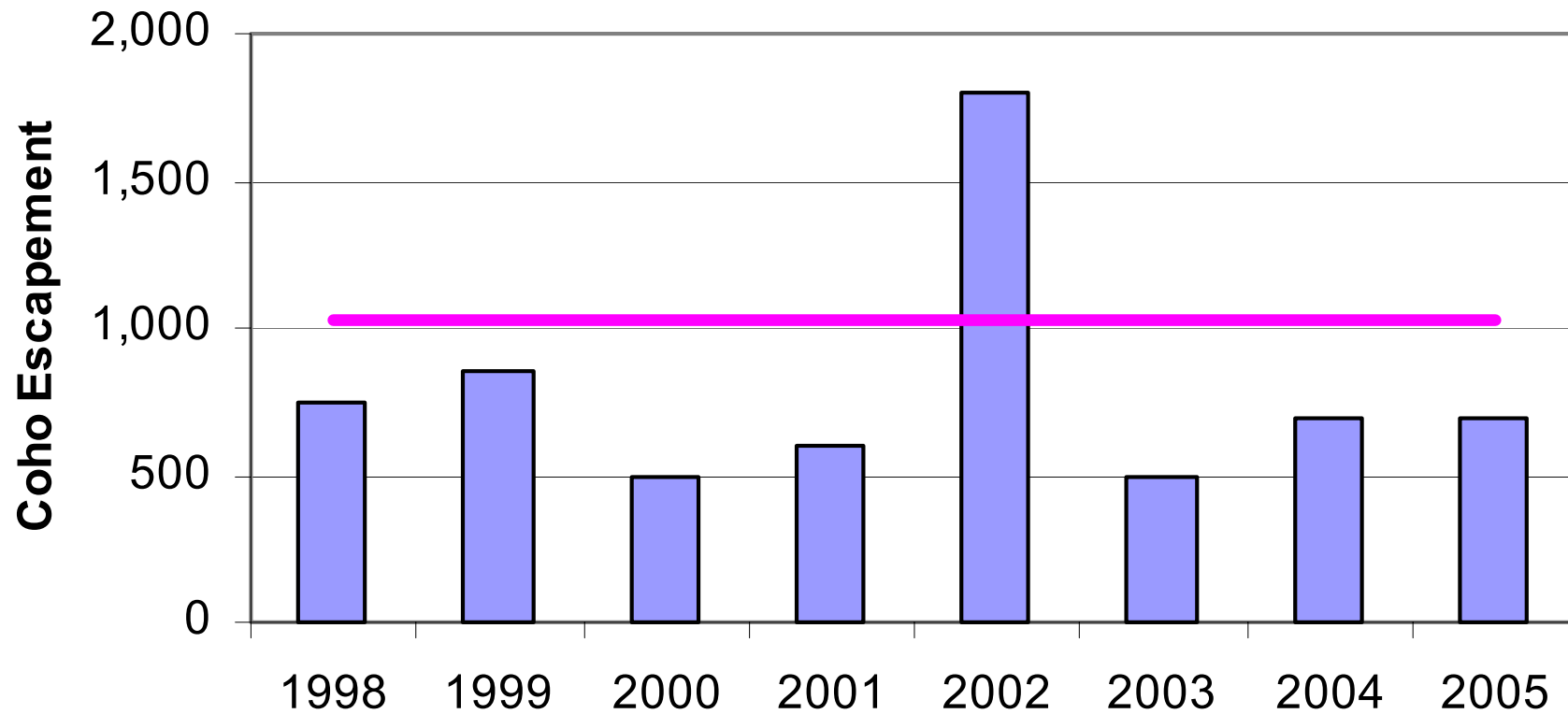
# Atnarko River and Tower Counts

- Coho count of 8,300 expanded for 24 hours (lower than last year, however adequate for seeding)
- Chinook Deadpitch estimate of 18,500 chinook to the Atnarko
- Pink Counts of 600K past the tower above last year. Total estimated pinks to the Bella Coola/Atnarko system 700K and slightly below target of 1M

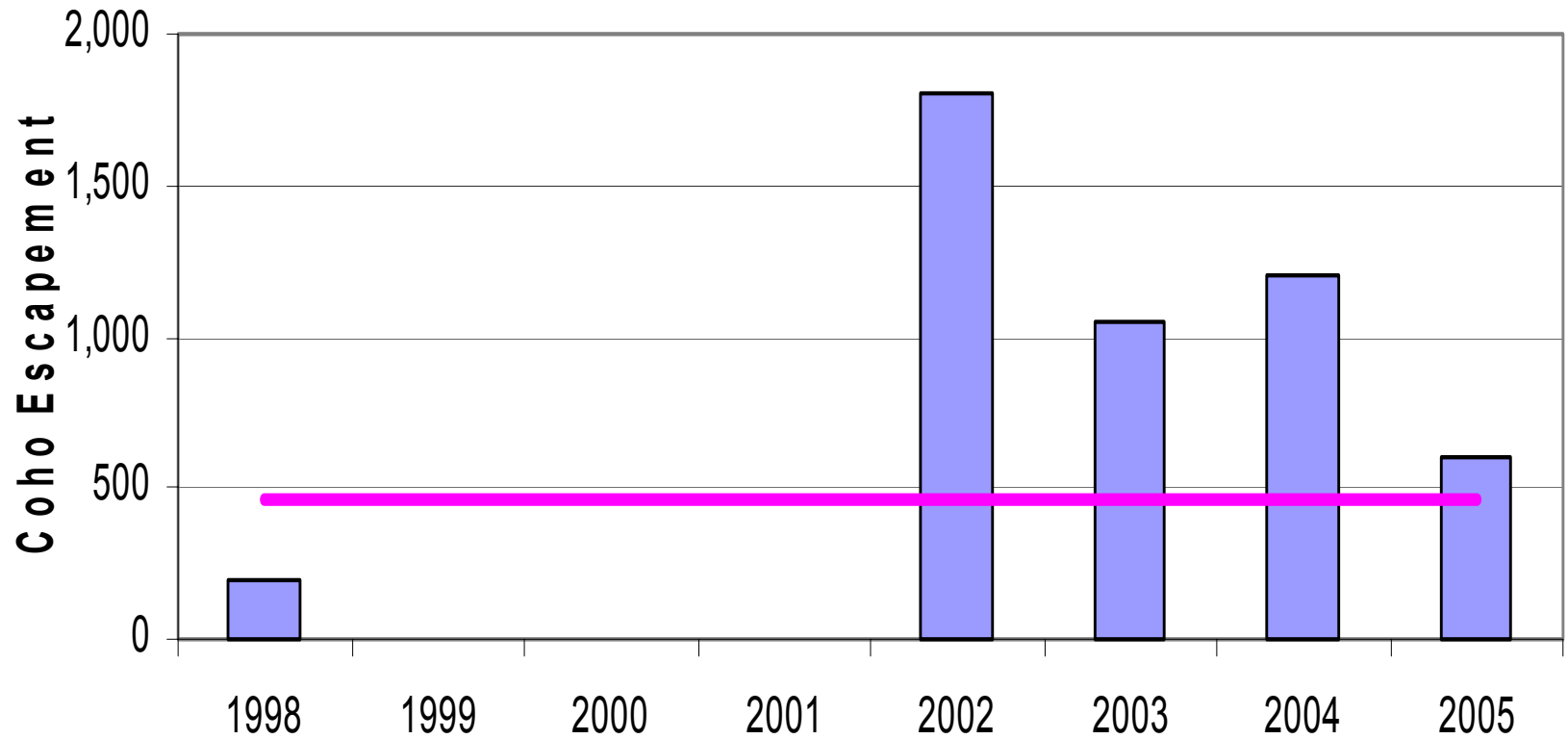
# Area 7 Roscoe Coho



## Area 7 Quartcha Coho



## Area 8 Elcho Coho



# Area 10 Programs

Smith Inlet

# Docee River Counting Fence

- Fence operated from June 30-Sept 15, 2005.
- Salmon enumerated:
- Sockeye 13,988
- Coho 19,906
- Chinook 155

# Looking Forward to 2006

- Potential Wannock Mark-Recapture Experiment (PSC Northern Fund)
- Potential Dean River Mark Recapture Experiment (PSC Northern Fund)
- Echo Sounding Project in Rivers Inlet (Sockeye Management Tool)
- Potential for modest Sockeye fishery in Smith Inlet



The End