

Central Coast Catch and Escapement 2005



Stat Areas 7-10

Central Coast – Areas 7 to 10

- Overview of Food, Social, and Ceremonial and Sport Catches
- Details on Commercial Net Catches
- Escapement Highlights

Food, Social and Ceremonial Catches in 2005

	Sockeye	Coho	Pink	Chum	Chinook
Area 7	993	337	411	784	173
Area 8 - Tidal	755	111	550	249	56
Area 8 - Non-Tidal	435	1,919	212	410	3,884
Area 9 - Tidal	225	0	52	47	2
Area 9 - Non-Tidal	1,188	23	123	25	65
Area 10	0	9	0	0	0
TOTAL	3,596	2,399	1,348	1,515	4,180

Sport Catches in 2005

	Sockeye	Coho	Pink	Chum	Chinook
Area 7	11	8,475	430	313	5,229
Area 8 - Hakai Pass	4	5,776	1,273	137	1,480
Area 8 - Non-Tidal	0	492	2,328	245	809
Area 9	0	13,558	2,407	267	2,308
Area 10	0	0	0	0	0
TOTAL	15	28,301	6,438	962	9,826

Area 7

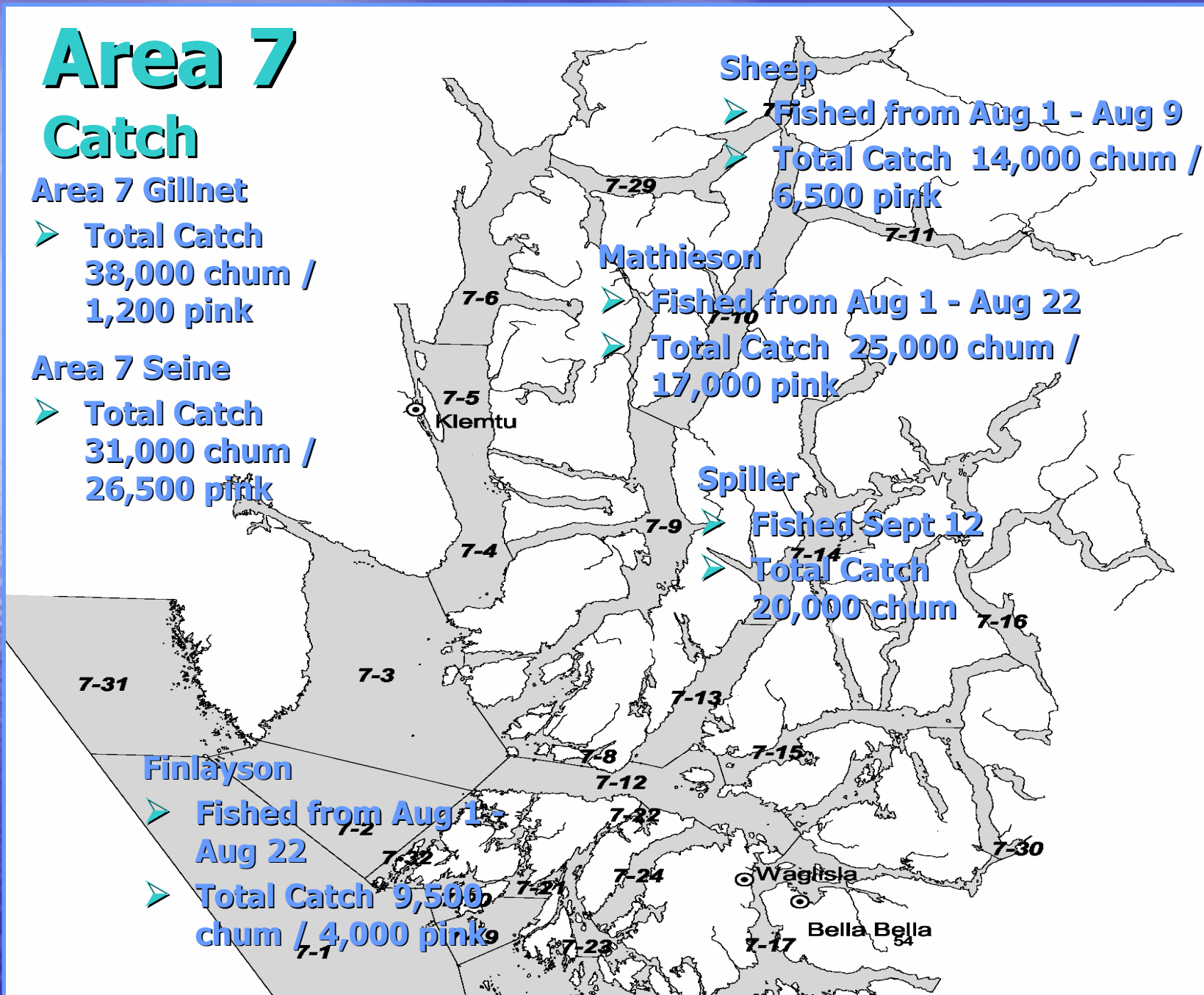
Catch

Area 7 Gillnet

- Total Catch 38,000 chum / 1,200 pink

Area 7 Seine

- Total Catch 31,000 chum / 26,500 pink



Area 7

Escapements

Mussel
47,000 chum
70,000 pink

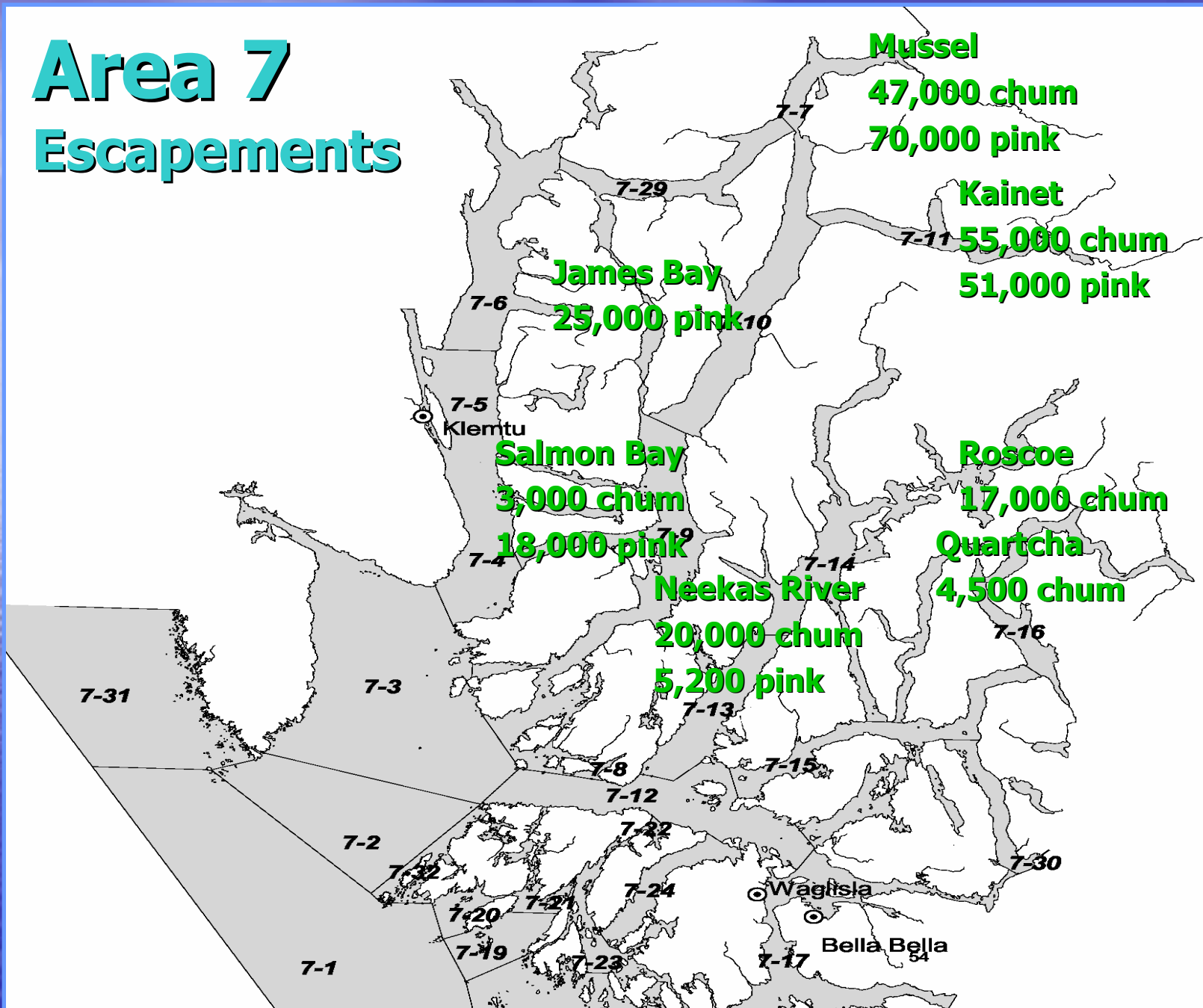
Kainet
55,000 chum
51,000 pink

James Bay
25,000 pink

Salmon Bay
3,000 chum
18,000 pink

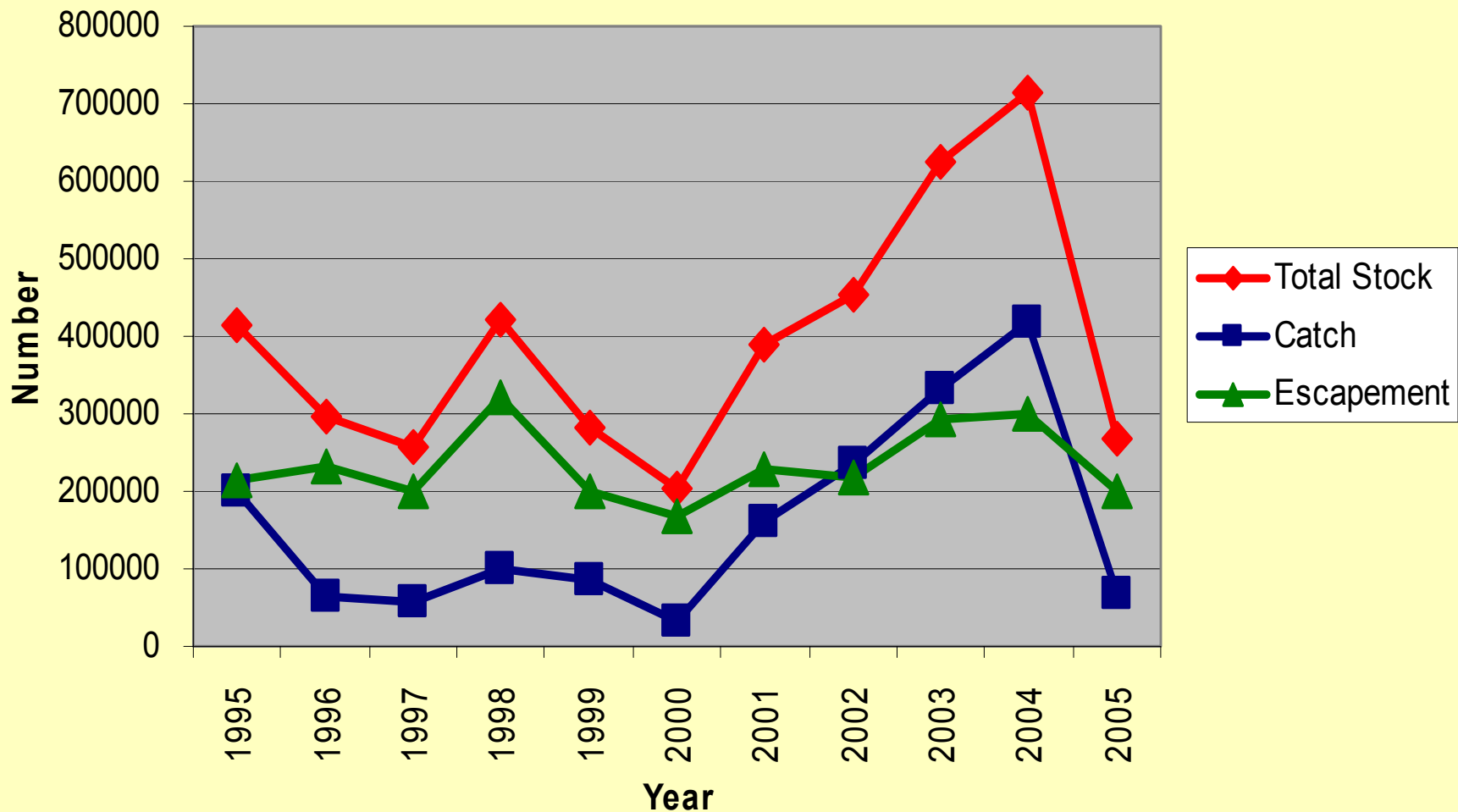
Roscoe
17,000 chum
Quartcha
4,500 chum

Neekas River
20,000 chum
5,200 pink



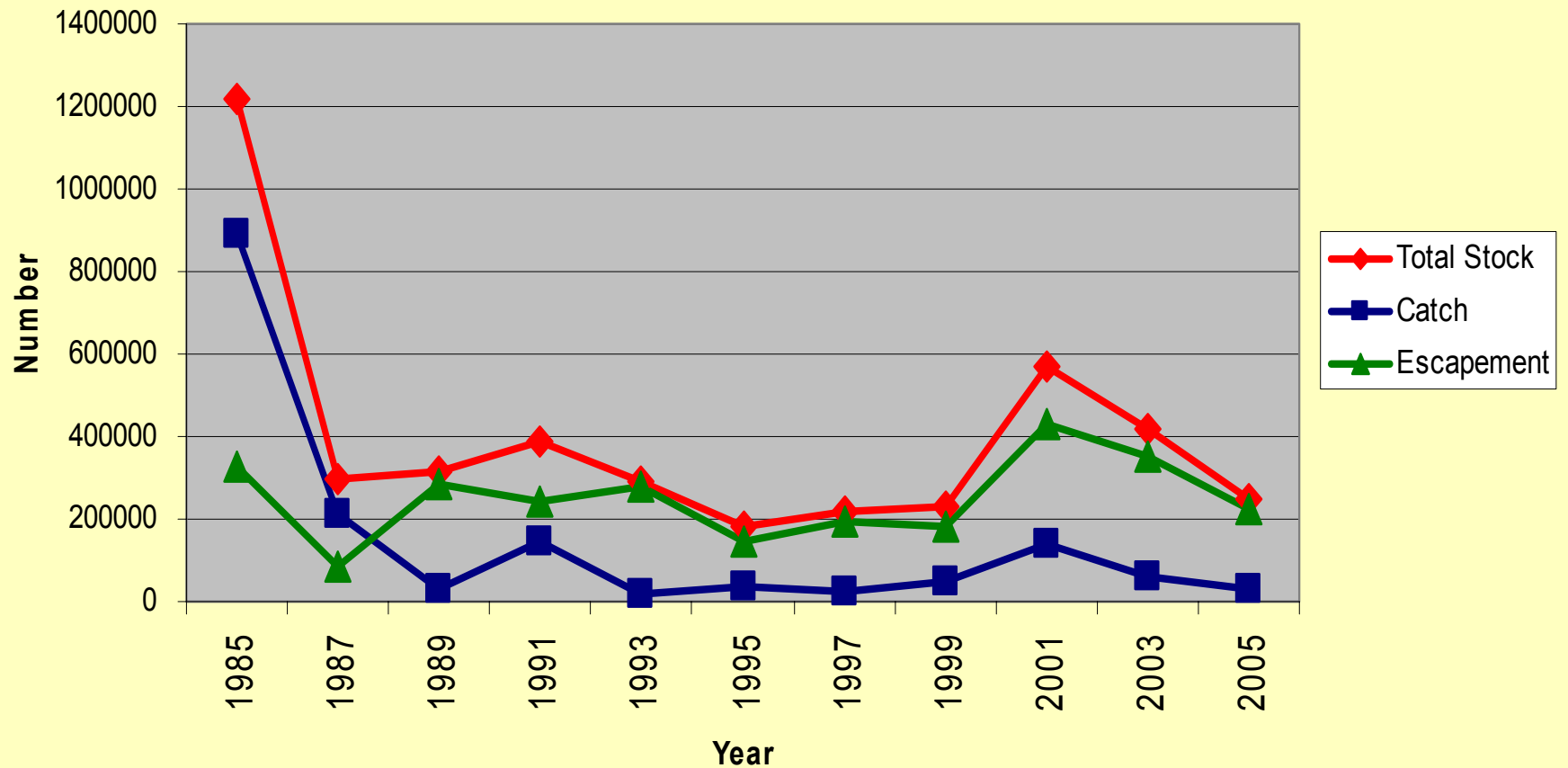
Area 7 Chum

Catch/Escapement/Total Stock



Area 7 Pink

Catch/Escapement/Total Stock



Area 8

Catch

Area 8 Gillnet

- Total Catch:
198,500 chum
24,000 pink
6,200 chinook

Area 8 Seine

- Total Catch
74,000 chum
580,000 pink

Fisher/Fitz/Hugh Area

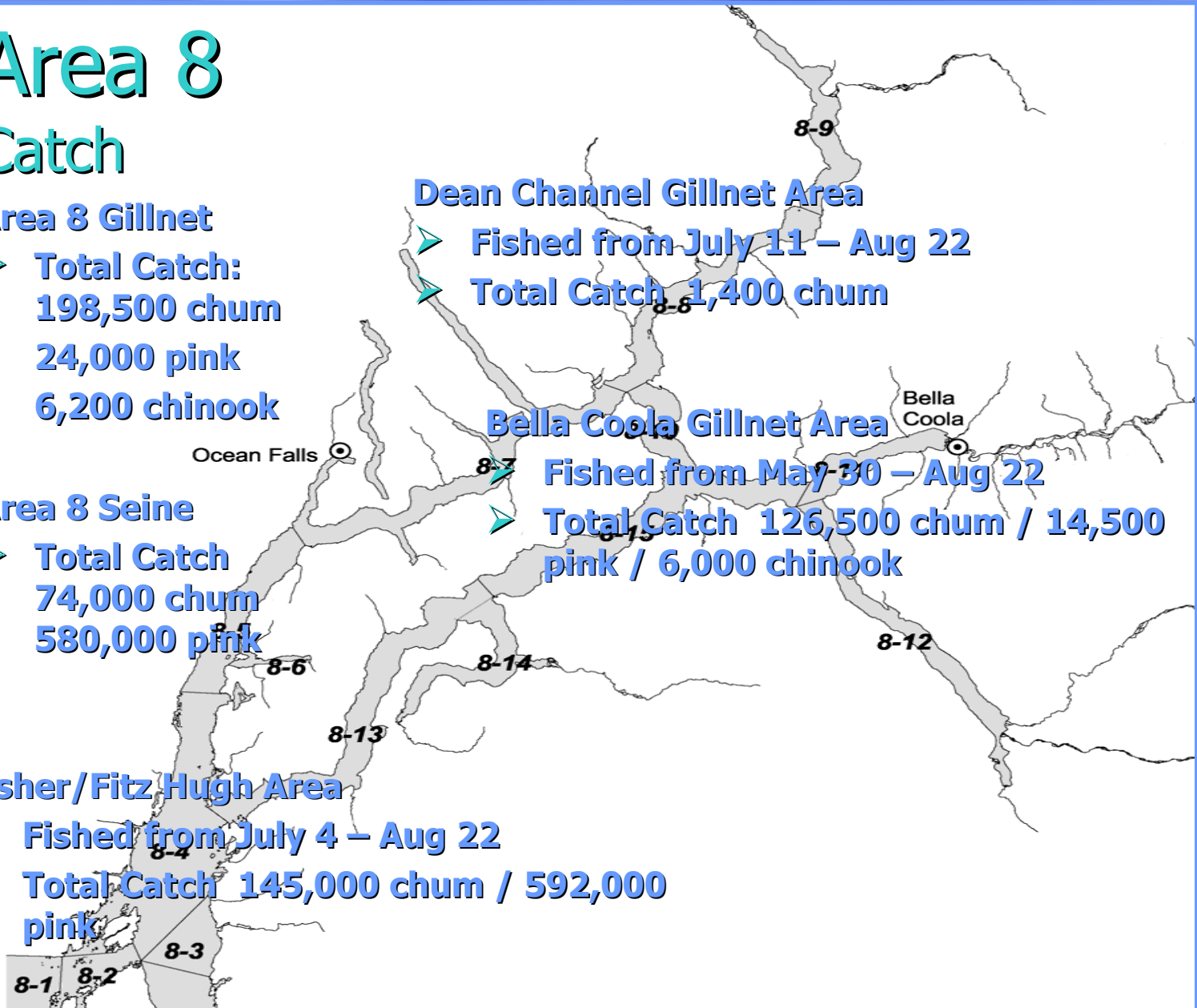
- Fished from July 4 – Aug 22
- Total Catch 145,000 chum / 592,000 pink

Dean Channel Gillnet Area

- Fished from July 11 – Aug 22
- Total Catch 1,400 chum

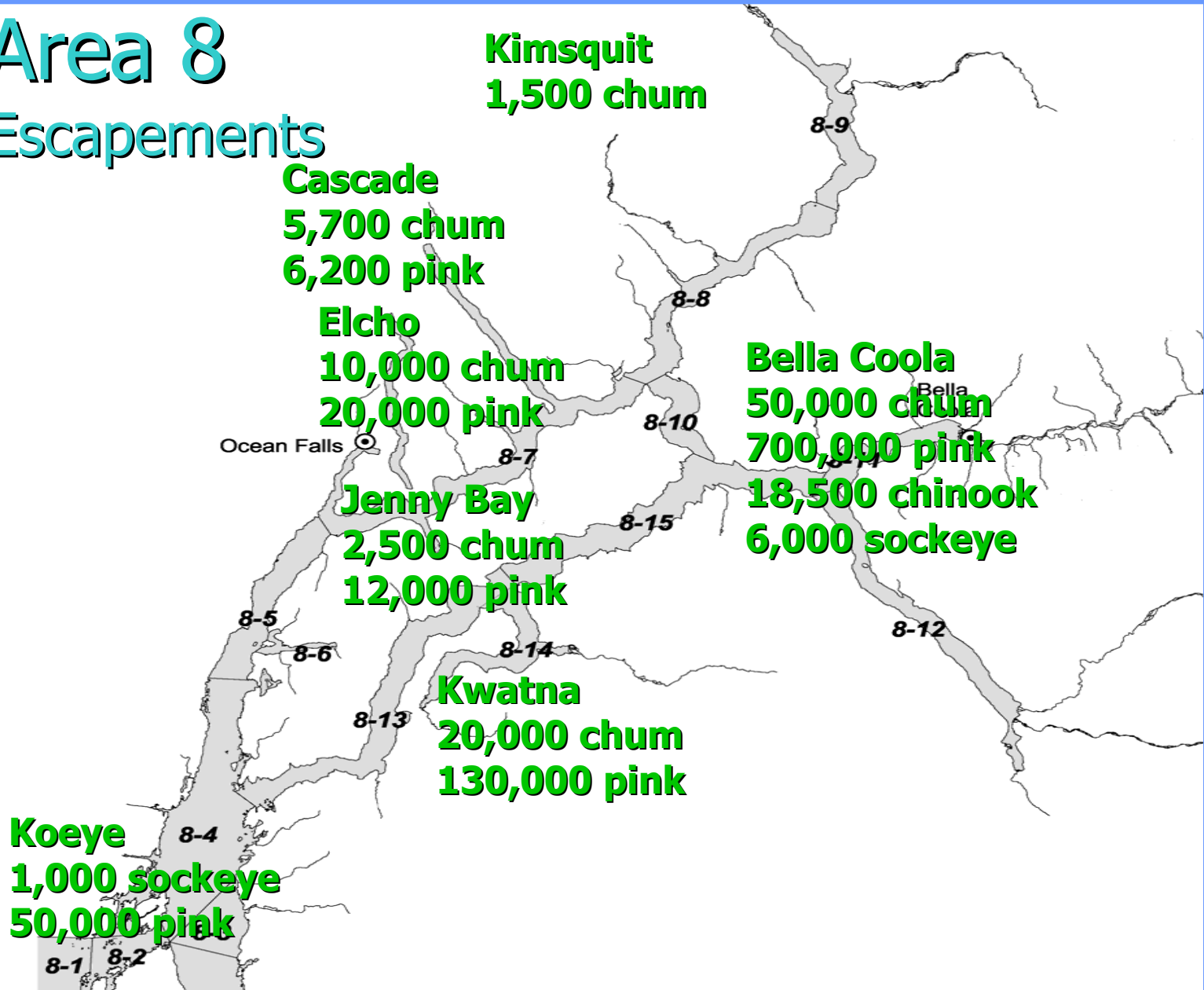
Bella Coola Gillnet Area

- Fished from May 30 – Aug 22
- Total Catch 126,500 chum / 14,500 pink / 6,000 chinook



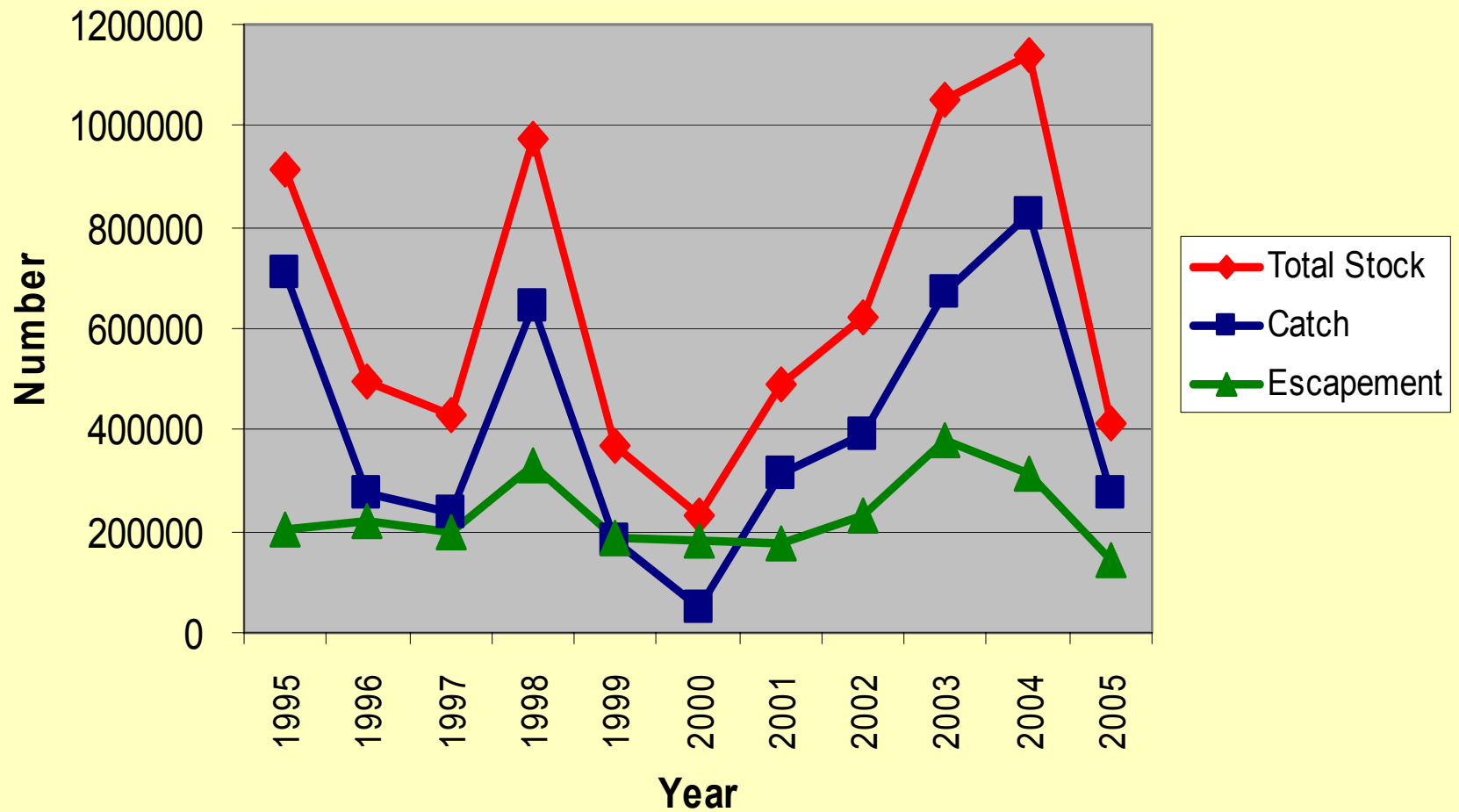
Area 8

Escapements



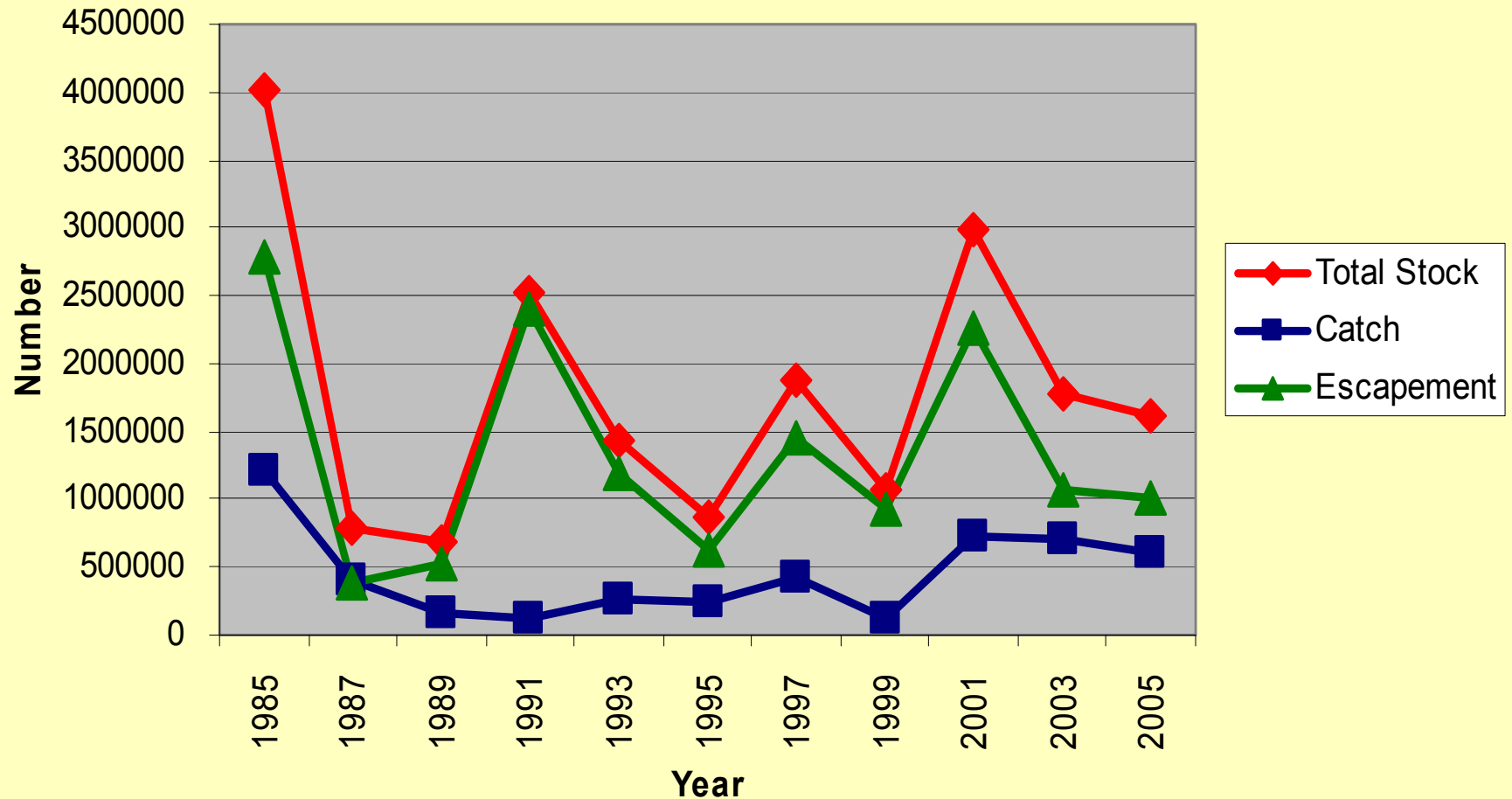
Area 8 Chum

Catch/Escapement/Total Stock



Area 8 Pink

Catch/Escapement/Total Stock

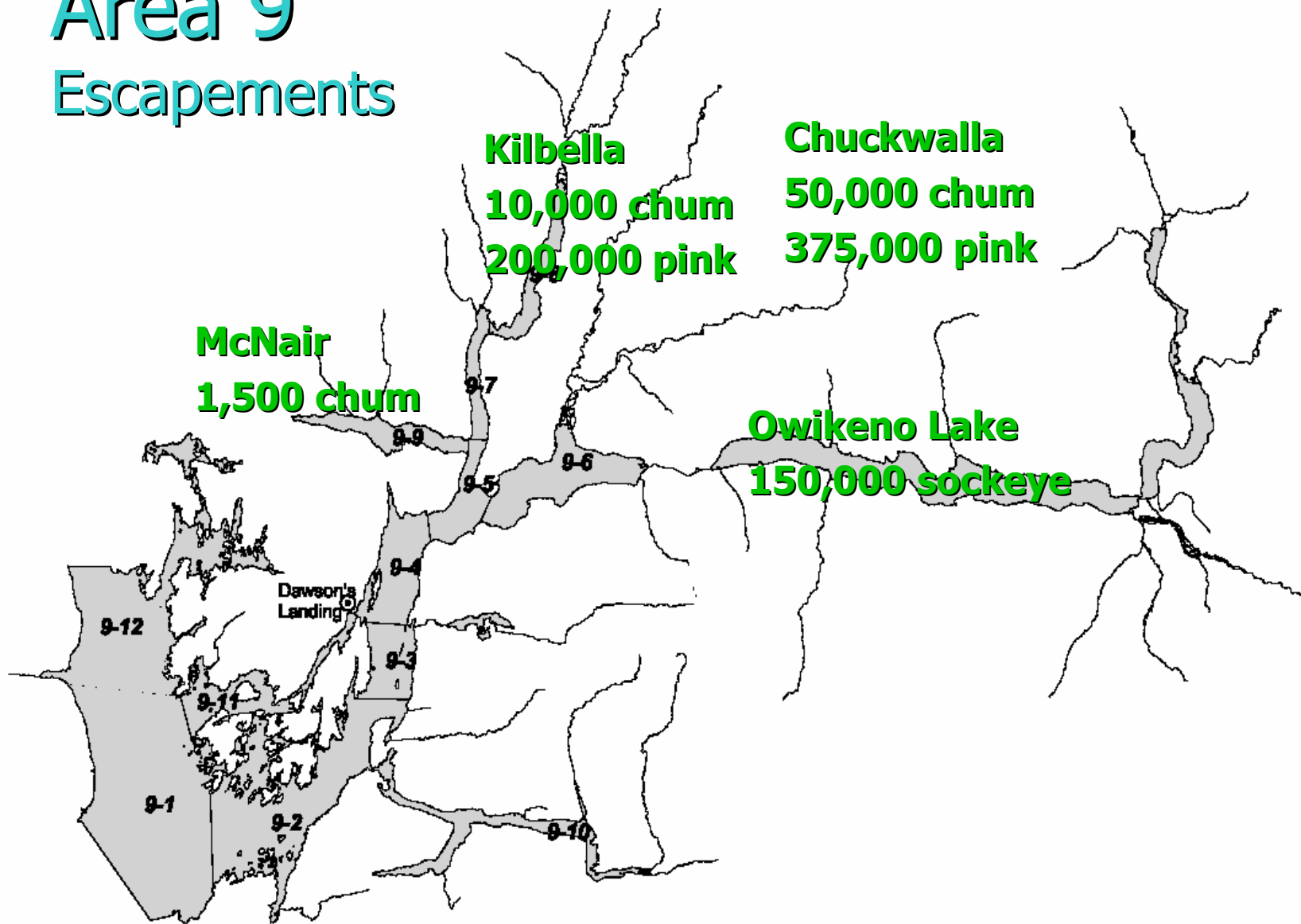


Commercial Catch in 2005

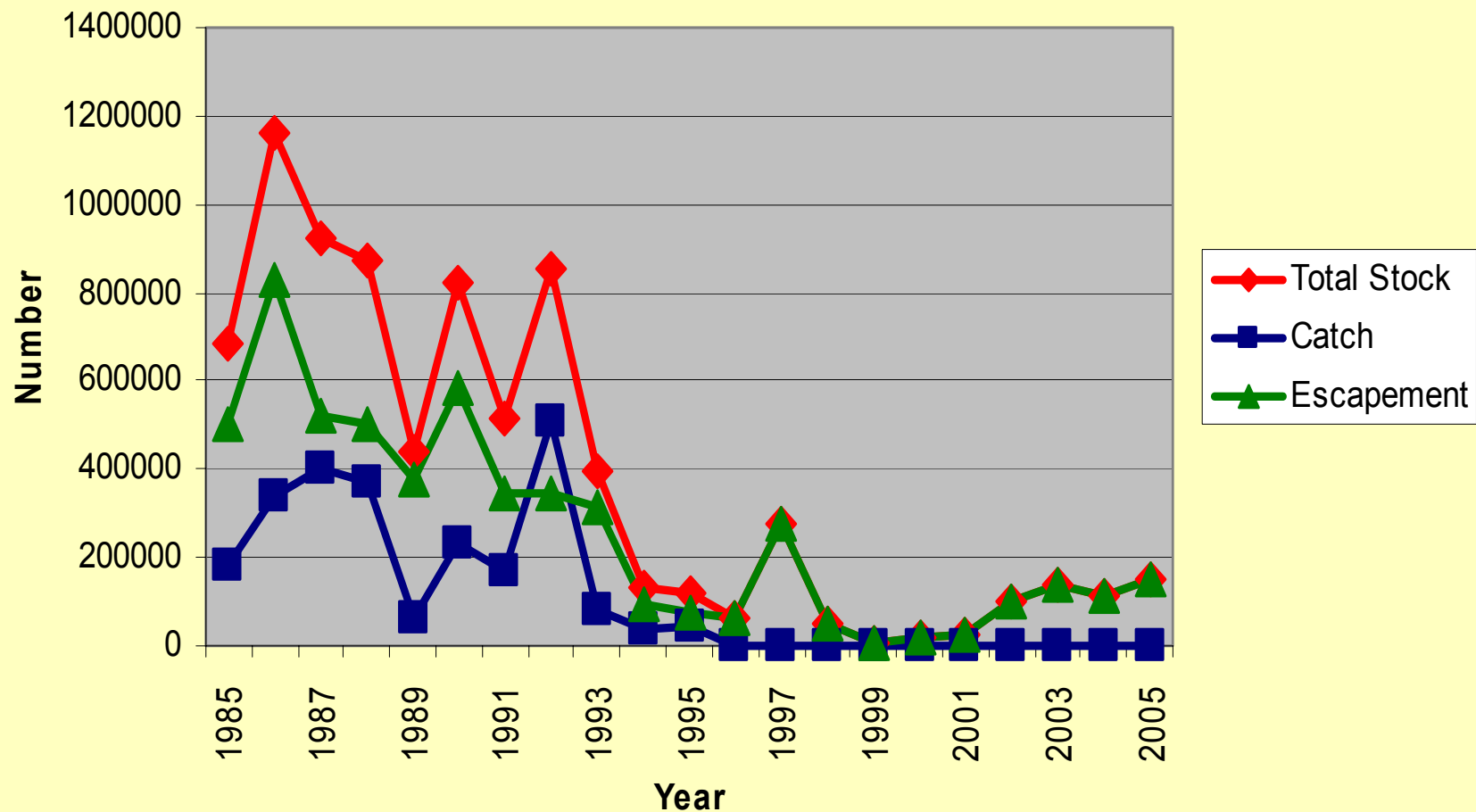
	Sockeye	Coho	Pink	Chum	Chinook
Area 7	78	1,708	27,728	68,962	4
Area 8	1,089	13,436	607,174	272,992	6,179
Area 9	0	0	0	0	0
Area 10	0	0	0	0	0
TOTAL	1,167	15,144	634,902	341,954	6,183

Area 9

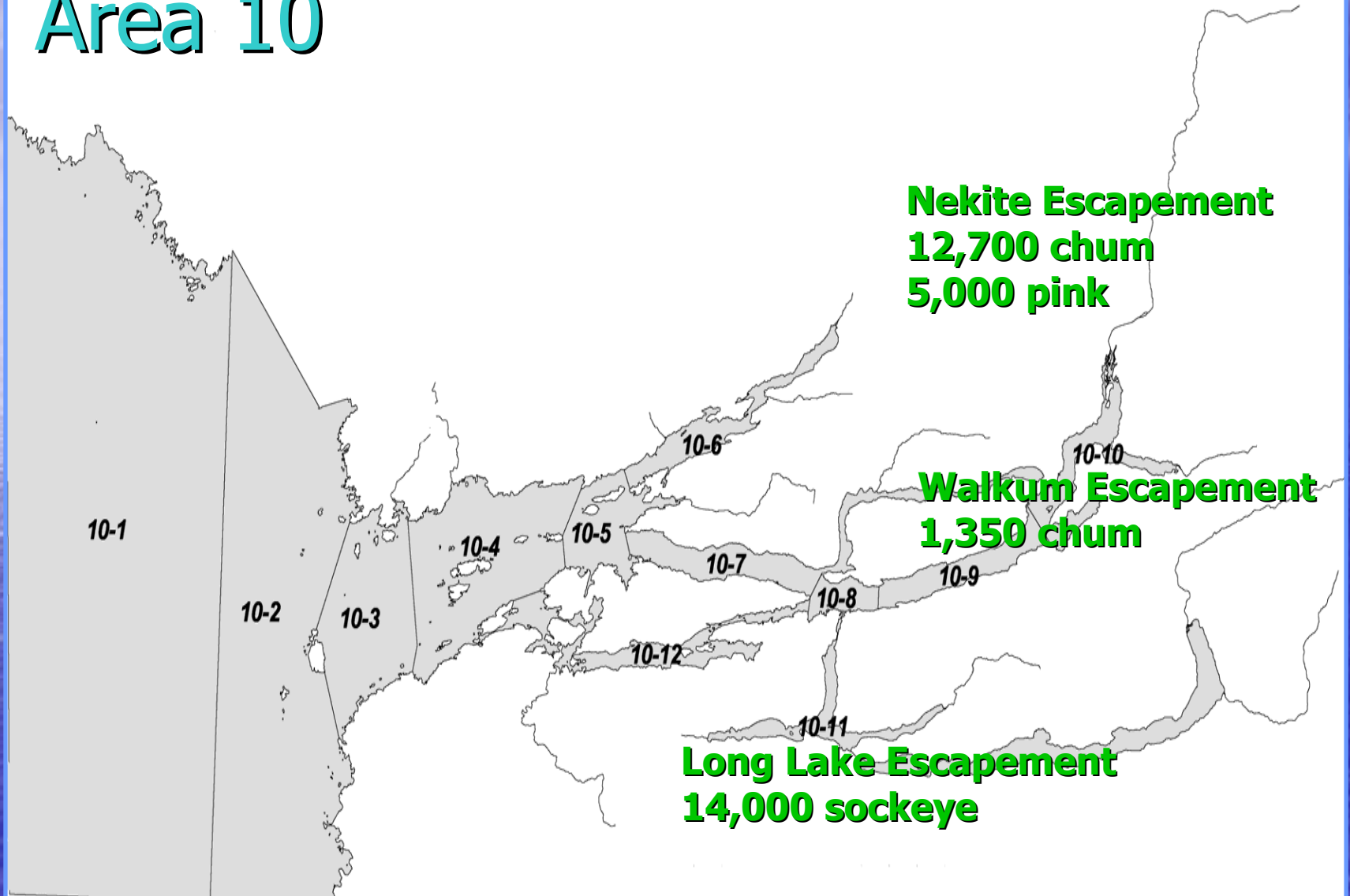
Escapements



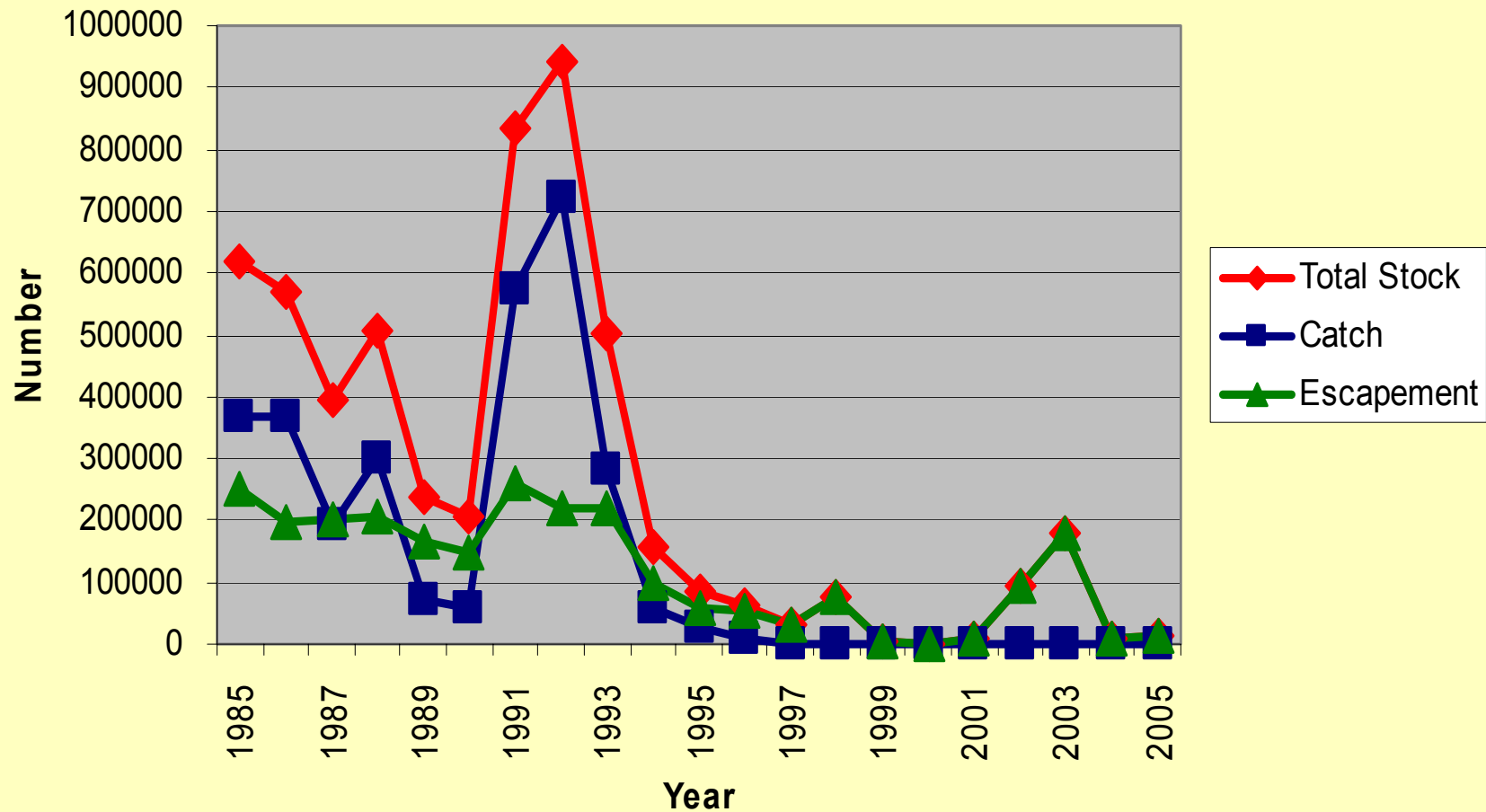
Area 9 Sockeye Catch/Escapement/Total Stock



Area 10



Area 10 Sockeye Catch/Escapement/Total Stock



Areas 7-10 Total Salmon Catches

	Sockeye	Coho	Pink	Chum	Chinook
Area 7	1,082	10,520	28,569	70,059	5,406
Area 8	2,283	21,734	611,537	274,033	12,408
Area 9	1,413	13,381	2,582	339	2,015
Area 10	0	9	0	0	0
TOTAL	4,778	45,644	642,688	344,431	19,829