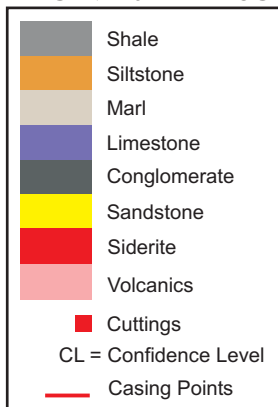
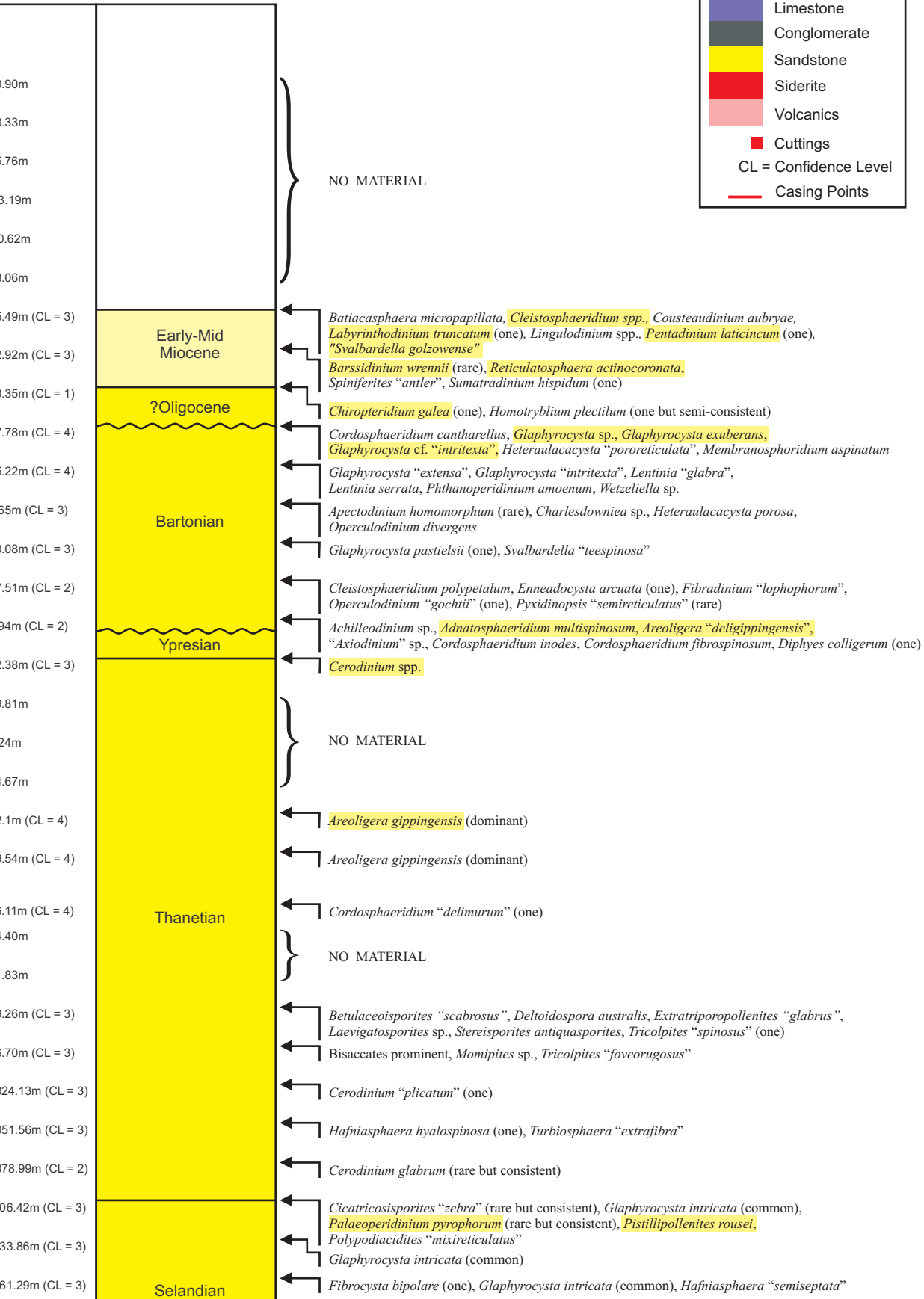


LEGEND for LITH LOG

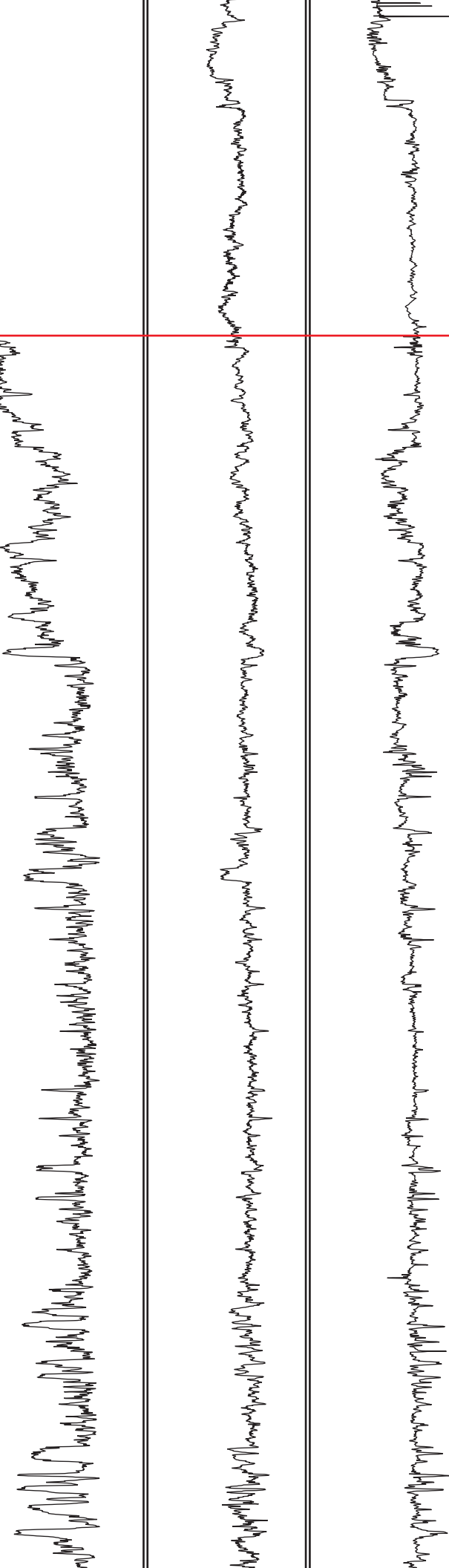


AGE

THIS STUDY



1200  
1300  
1400  
1500  
1600  
1700  
1800  
1900  
2000  
2100  
2200



WYANDOT  
FORMATION

DAWSON CANYON  
FORMATION

PETREL MB

MARMORA MB

LOGAN CANYON  
FORMATION

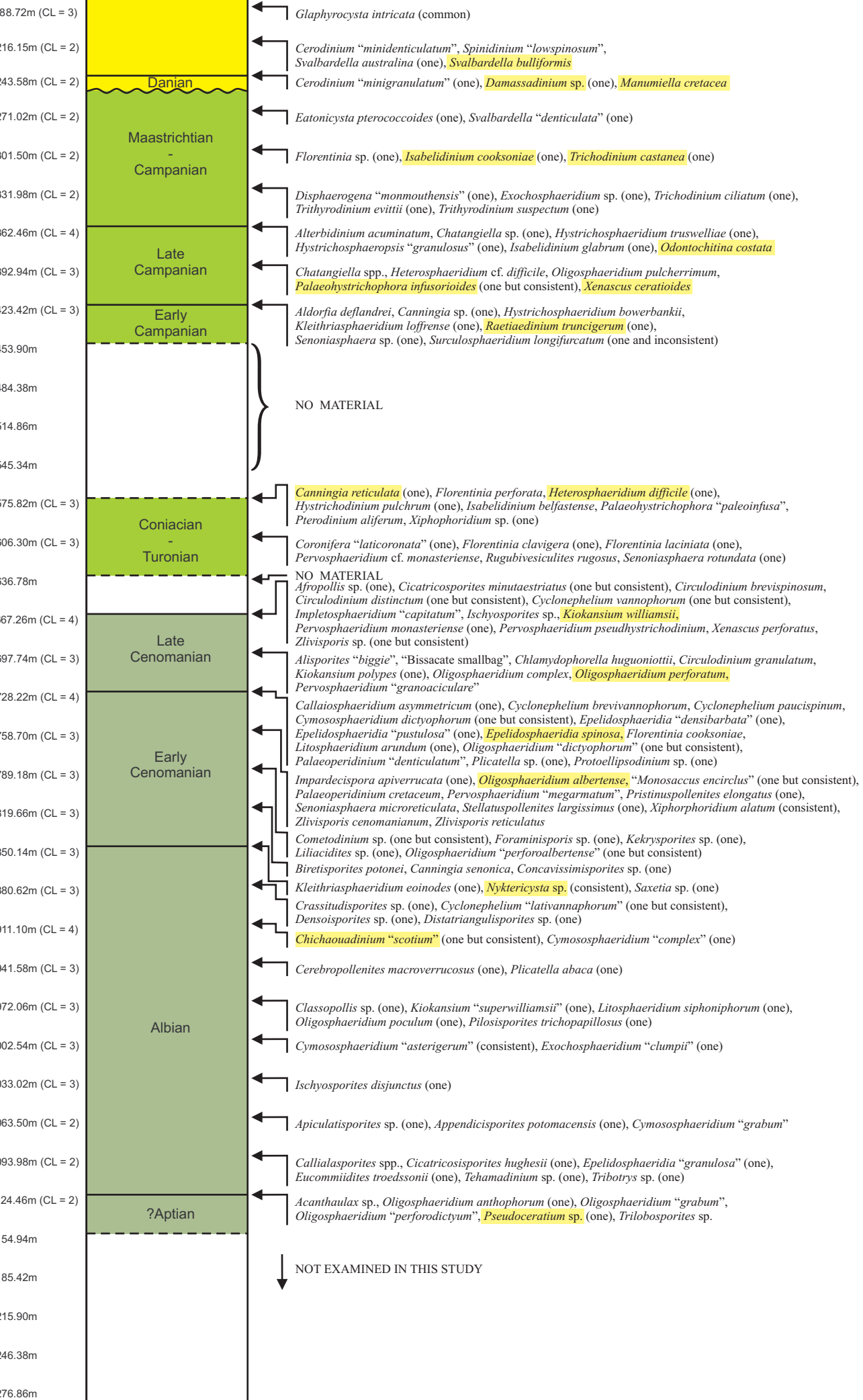
SABLE MB

CREE MB

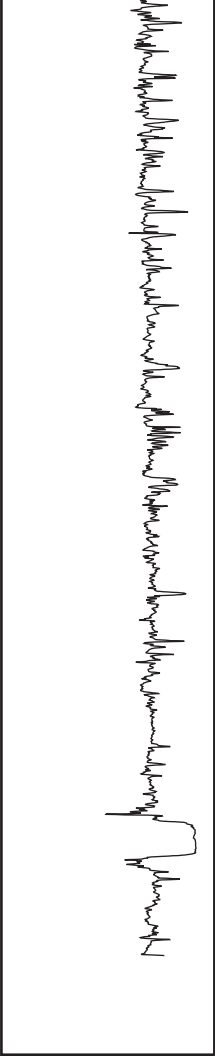
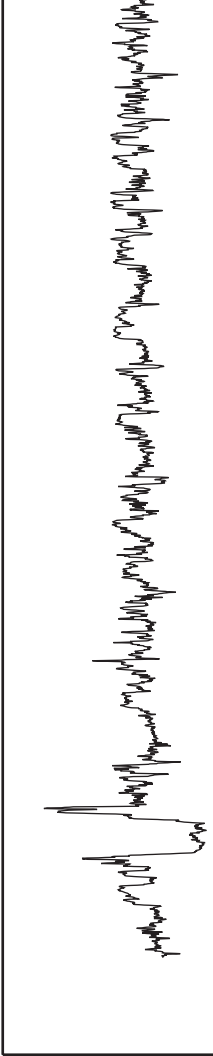
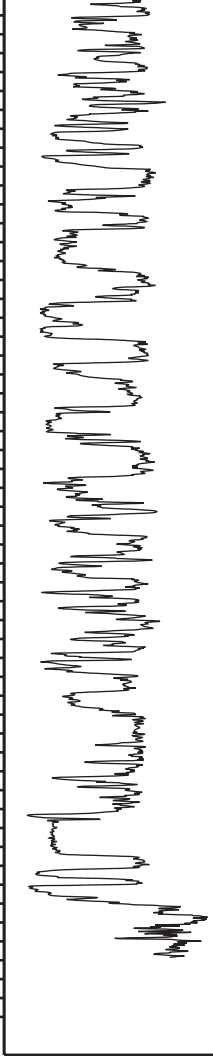
LATE  
CRETACEOUS

EARLY

- P13714 1179.58-11
- P13715 1207.01-12
- P13716 1234.44-12
- P13717 1261.87-12
- P13718 1292.35-13
- P13719 1322.83-13
- P13720 1353.31-13
- P13721 1383.79-13
- P13722 1414.27-14
- P13723 1444.75-14
- P13724 1475.23-14
- P13725 1505.71-15
- P13726 1536.19-15
- P13727 1566.67-15
- P13728 1597.15-16
- P13729 1627.63-16
- P13730 1658.11-16
- P13731 1688.59-16
- P13732 1719.07-17
- P13733 1749.55-17
- P13734 1780.03-17
- P13735 1810.51-18
- P13736 1840.99-18
- P13737 1871.47-18
- P13738 1901.95-19
- P13739 1932.43-19
- P13740 1962.91-19
- P13741 1993.39-20
- P13742 2023.87-20
- P13743 2054.35-20
- P13744 2084.83-20
- P13745 2115.31-21
- P13746 2145.79-21
- P13747 2176.27-21
- P13748 2206.75-22
- P13749 2237.23-22
- P13750 2267.71-22

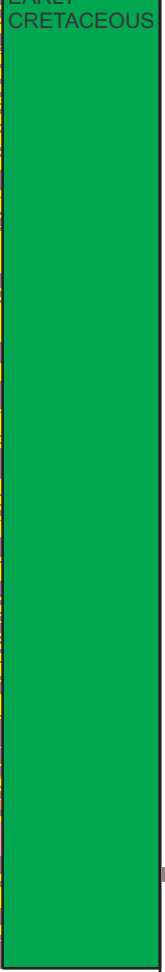


2300  
2400  
2500  
2600  
2700  
2800



NASKAPI MB  
(VOLCANIC BEDS)

MISSISSAUGA  
FORMATION



- CRETACEOUS
- P13751 2298.19-23
  - P13752 2328.67-23
  - P13753 2359.15-23
  - P13754 2389.63-23
  - P13755 2420.11-24
  - P13756 2450.59-24
  - P13757 2481.07-24
  - P13758 2511.55-25
  - P13759 2542.03-25
  - P13760 2572.51-25
  - P13761 2602.99-26
  - P13762 2633.47-26
  - P13763 2663.95-26
  - P13764 2694.43-27
  - P13765 2724.91-27
  - P13766 2755.39-27
  - P13767 2779.78-27

01

07.34m  
37.82m  
68.30m  
98.78m  
29.26m  
59.74m  
90.22m  
20.70m  
51.18m  
81.66m  
12.14m  
42.62m  
73.10m  
03.58m  
34.06m  
64.54m  
88.92m

Complied by: W.C. MacMillan  
Updated for web presentation: 16 February 2004  
Updated by: P. J. Upson