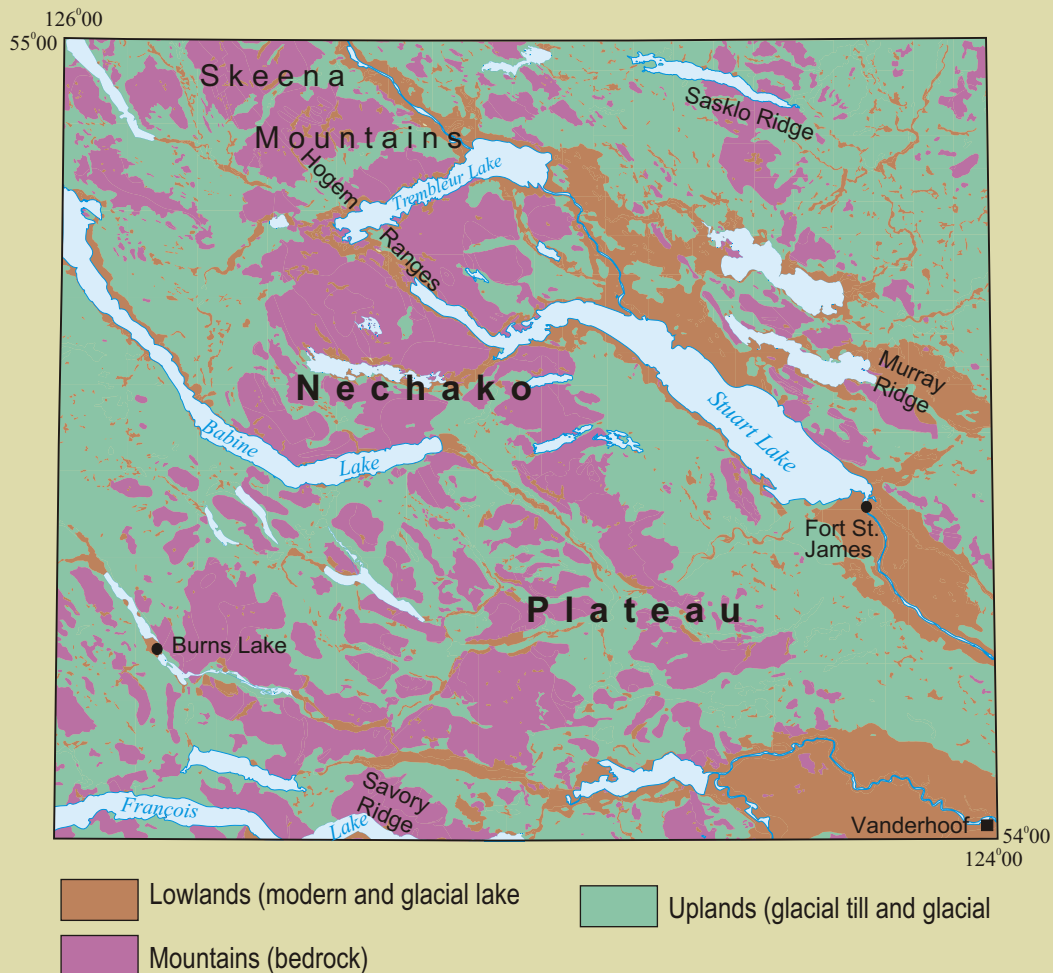


# Physiography



**Figure 20.** Physiography is the surface form of the Earth. Fort Fraser map area includes flat and rolling **lowlands**, rolling **uplands**, and low-lying **mountains**. The mountains increase in elevation to the north. Uplands of glacial till and glacial river sediment flank the mountains. **Lowlands** are areas of glacial lake sediment cut by modern rivers and creeks.