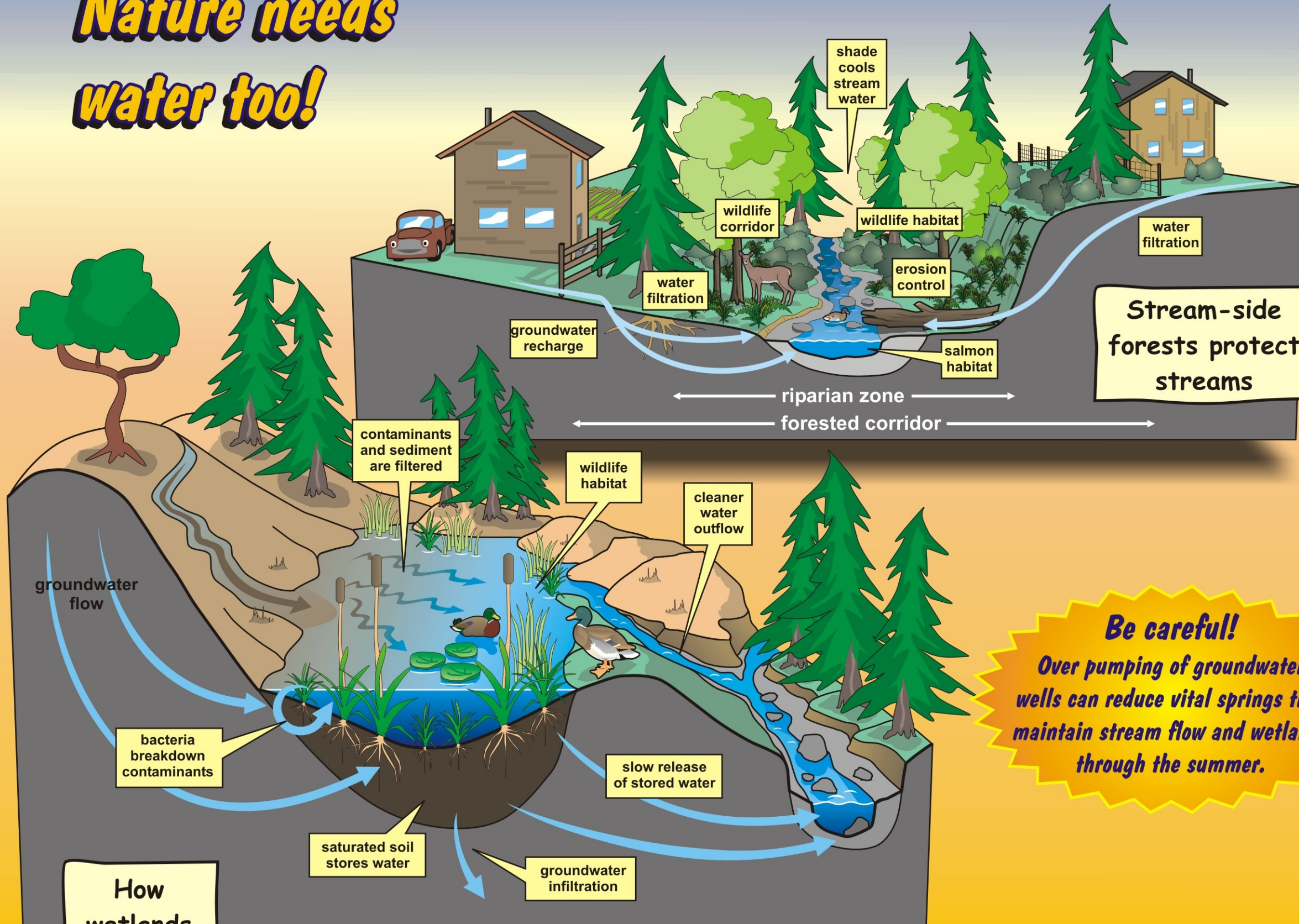


Protecting and conserving our island water

## Nature needs water too!



How wetlands work

**Be careful!**  
 Over pumping of groundwater wells can reduce vital springs that maintain stream flow and wetlands through the summer.



**Want to know more?**

This information is part of the *Gulf Islands Waterscape poster*, a Miscellaneous Report by the Geological Survey of Canada that will be available in late 2004. Draft content of the poster is available on the internet at:  
[www.bowenisland.info/waterscapes](http://www.bowenisland.info/waterscapes)  
 and  
[www.geoscape.nrcan.gc.ca](http://www.geoscape.nrcan.gc.ca)

Other useful information on water and groundwater is available from:  
 Islands Trust  
<http://www.islandstrust.bc.ca/>

British Columbia Ministry of Water Land Air Protection  
<http://wlapwww.gov.bc.ca/wat/gws/gwis.html>

British Columbia Groundwater Association  
<http://www.bcgwa.org/education.htm>