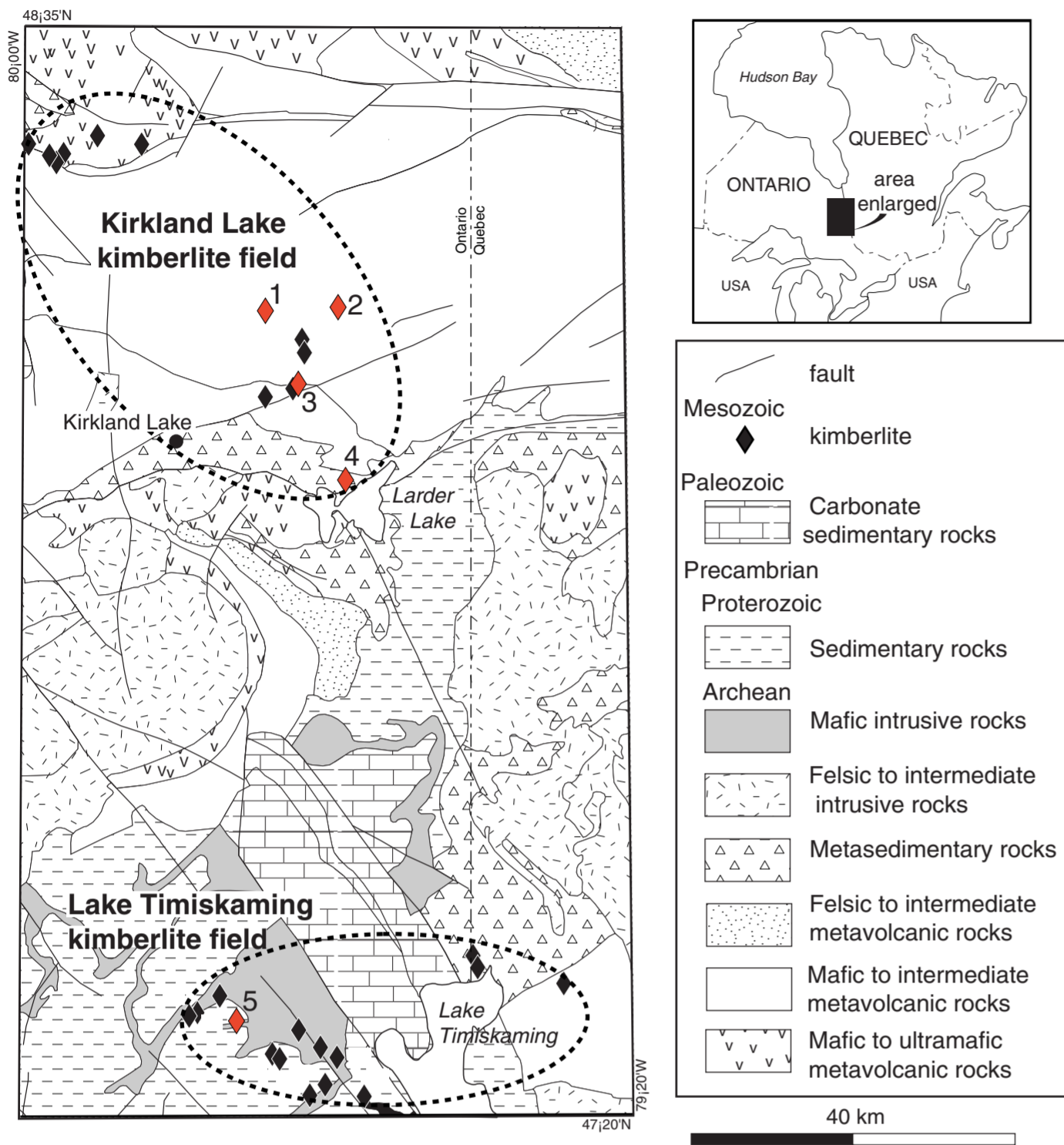


2. Location and Terrain



Location of the Kirkland Lake and Lake Timiskaming kimberlite fields in northeastern Ontario and the five kimberlites sampled in this study (red diamonds: 1) B30; 2) C14; 3) A4; 4) Diamond Lake; 5) 95-2). Bedrock geology from Ontario Geological Survey (1991).

The groundwater study area is centered around the Kirkland Lake - New Liskeard region in northeastern Ontario. Kimberlites A4, B30, C14 and Diamond Lake (DL) (map numbers 1-4) are clustered around Kirkland Lake. The fifth kimberlite sampled (5) is from the Lake Timiskaming kimberlite field.



Terrain in the area is characteristic of boreal shield forest, with numerous lakes, streams and rivers. All kimberlites with the exception of Diamond Lake are in a slight topographic low, and the terrain is difficult to traverse with swampy and wet ground.



and



and, its...



gone!