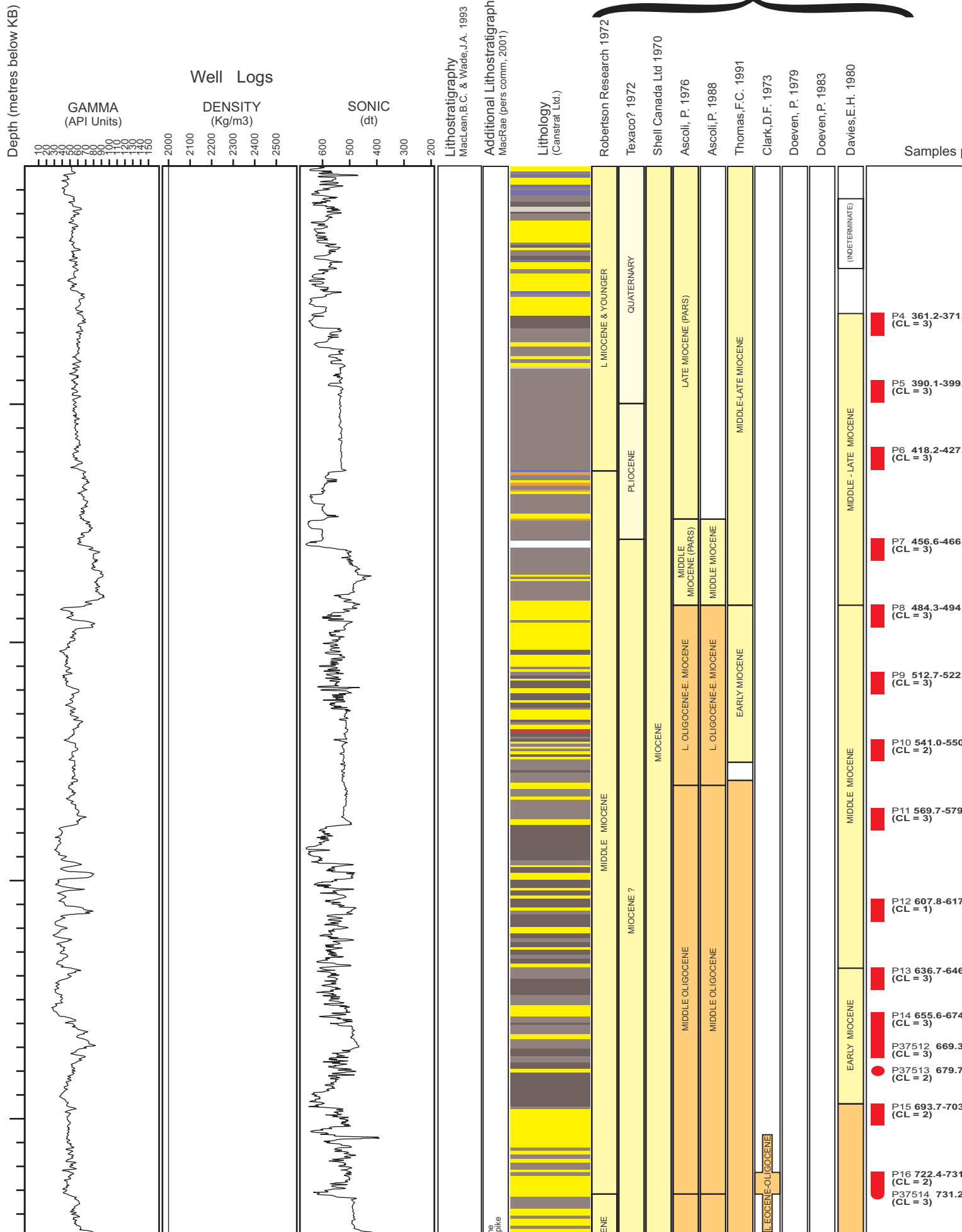


Informal update of chart that accompanied Report number

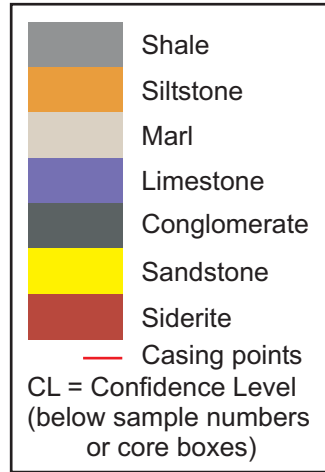
Biostratigraphy



Samples

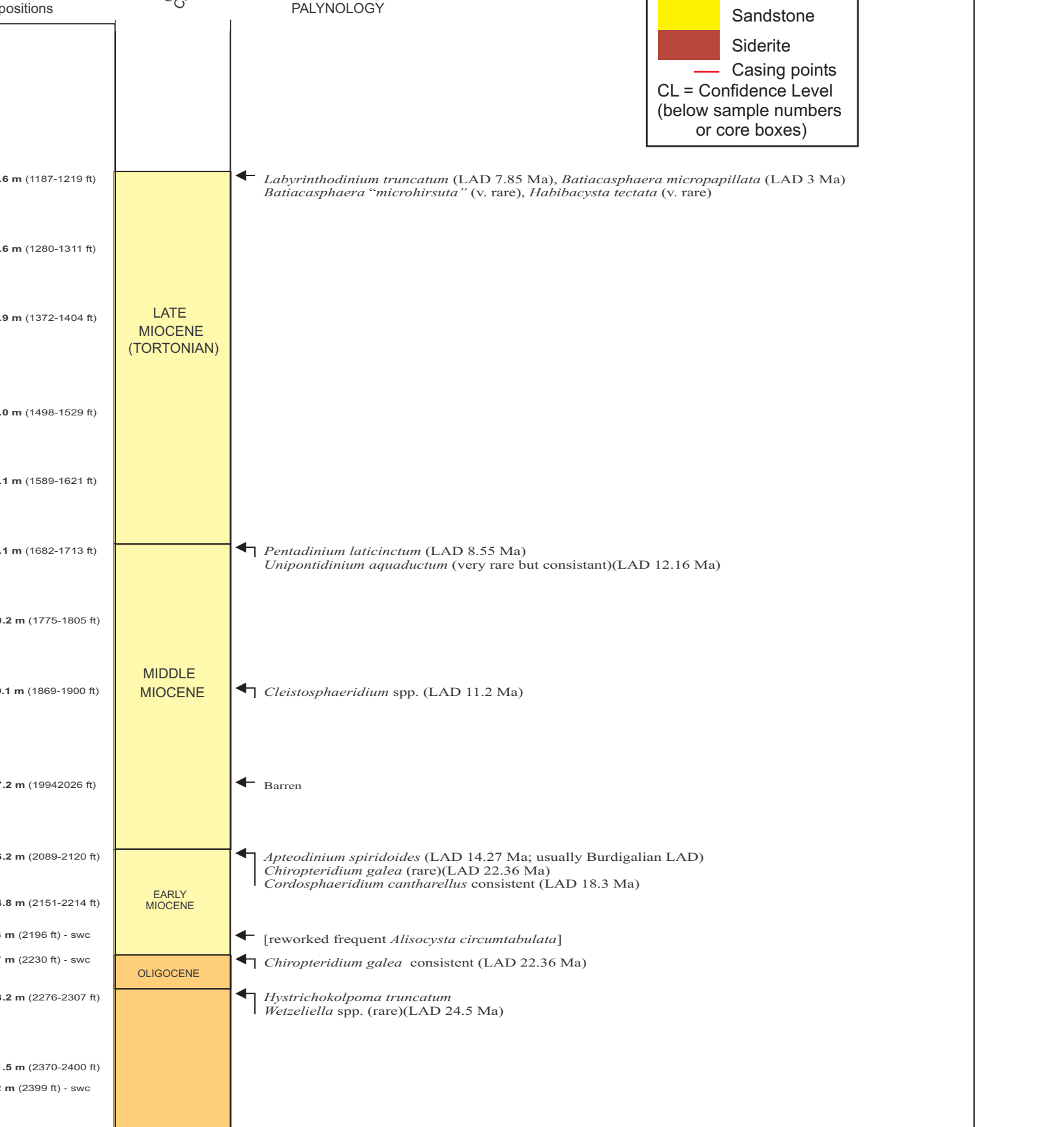
- P4 361.2-371 (CL = 3)
- P5 390.1-399 (CL = 3)
- P6 418.2-427 (CL = 3)
- P7 456.6-466 (CL = 3)
- P8 484.3-494 (CL = 3)
- P9 512.7-522 (CL = 3)
- P10 541.0-550 (CL = 2)
- P11 569.7-579 (CL = 3)
- P12 607.8-617 (CL = 1)
- P13 636.7-646 (CL = 3)
- P14 655.6-674 (CL = 3)
- P37512 669.3 (CL = 3)
- P37513 679.7 (CL = 2)
- P15 693.7-703 (CL = 2)
- P16 722.4-731 (CL = 2)
- P37514 731.2 (CL = 3)

LEGEND

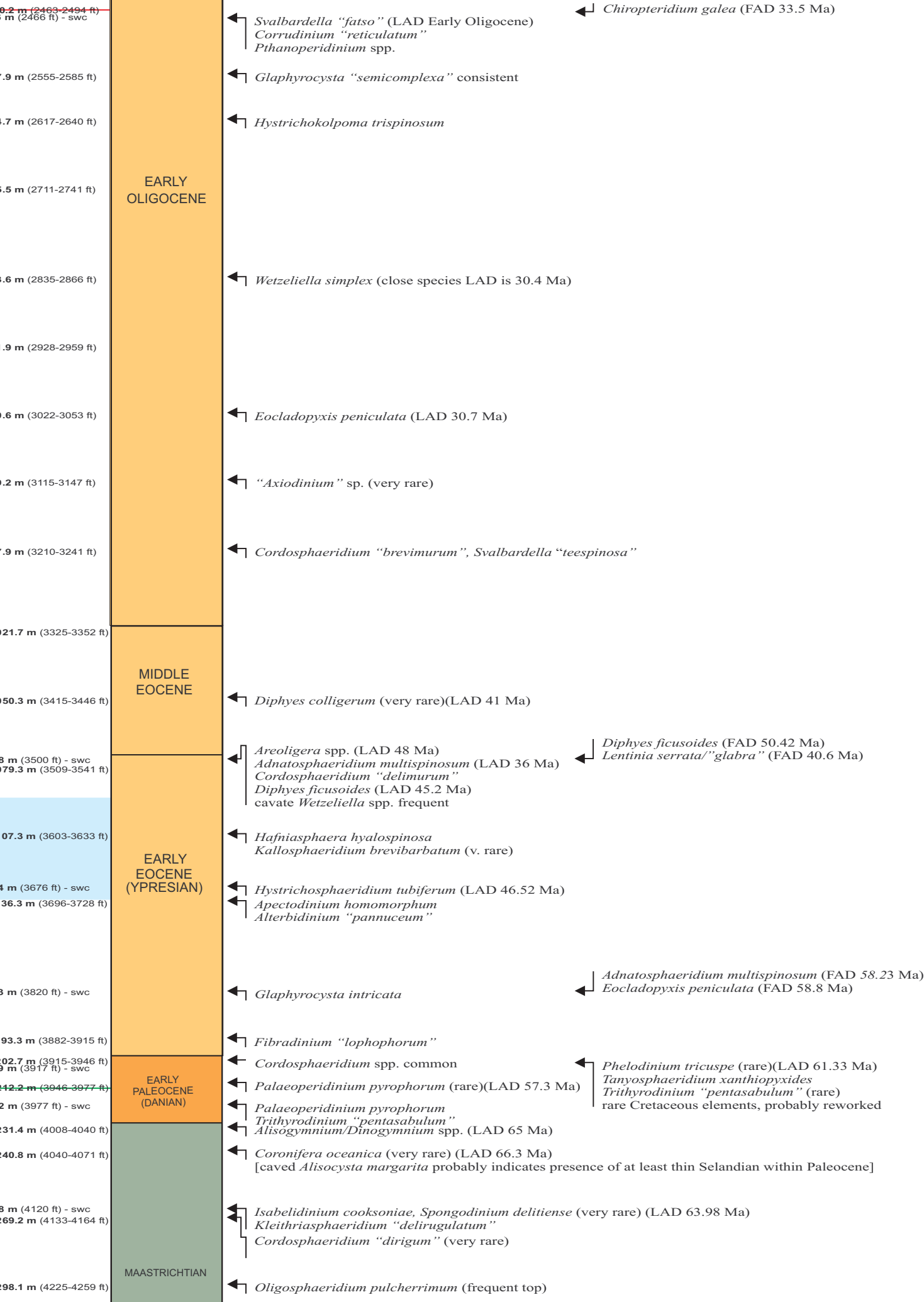


Biostratigraphy  
(based on palynology)  
Current Report

PALYNOLOGY



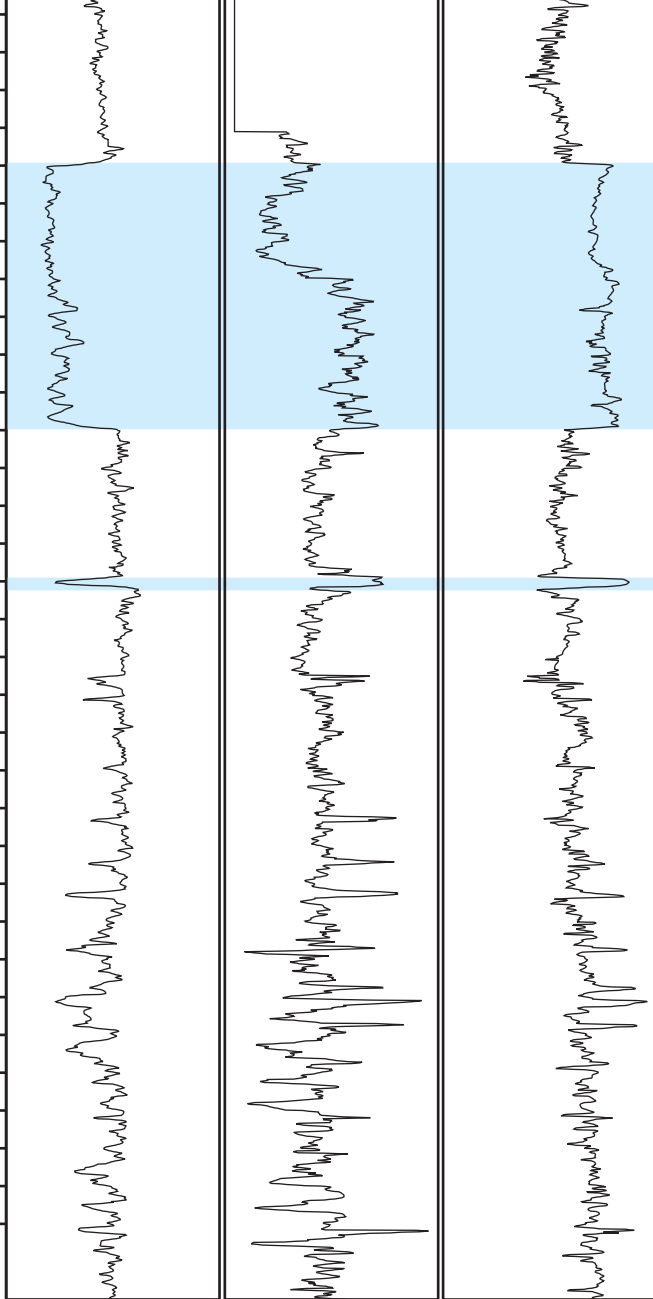




1400

1500

1600

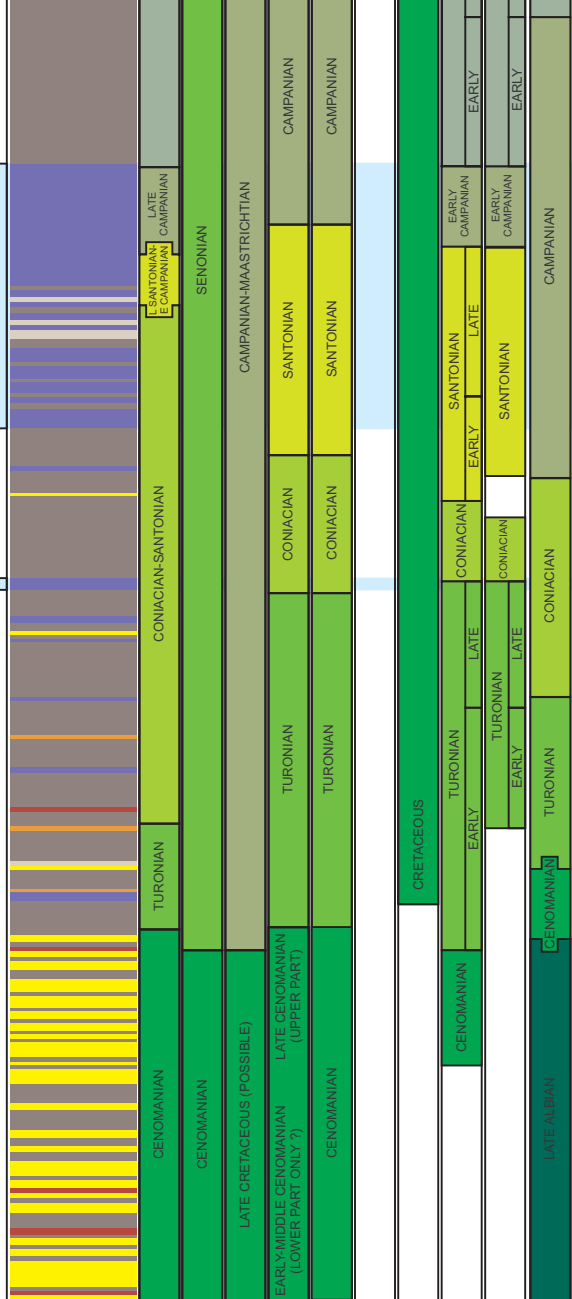


LOGAN CANYON FORMATION  
Marmora Member

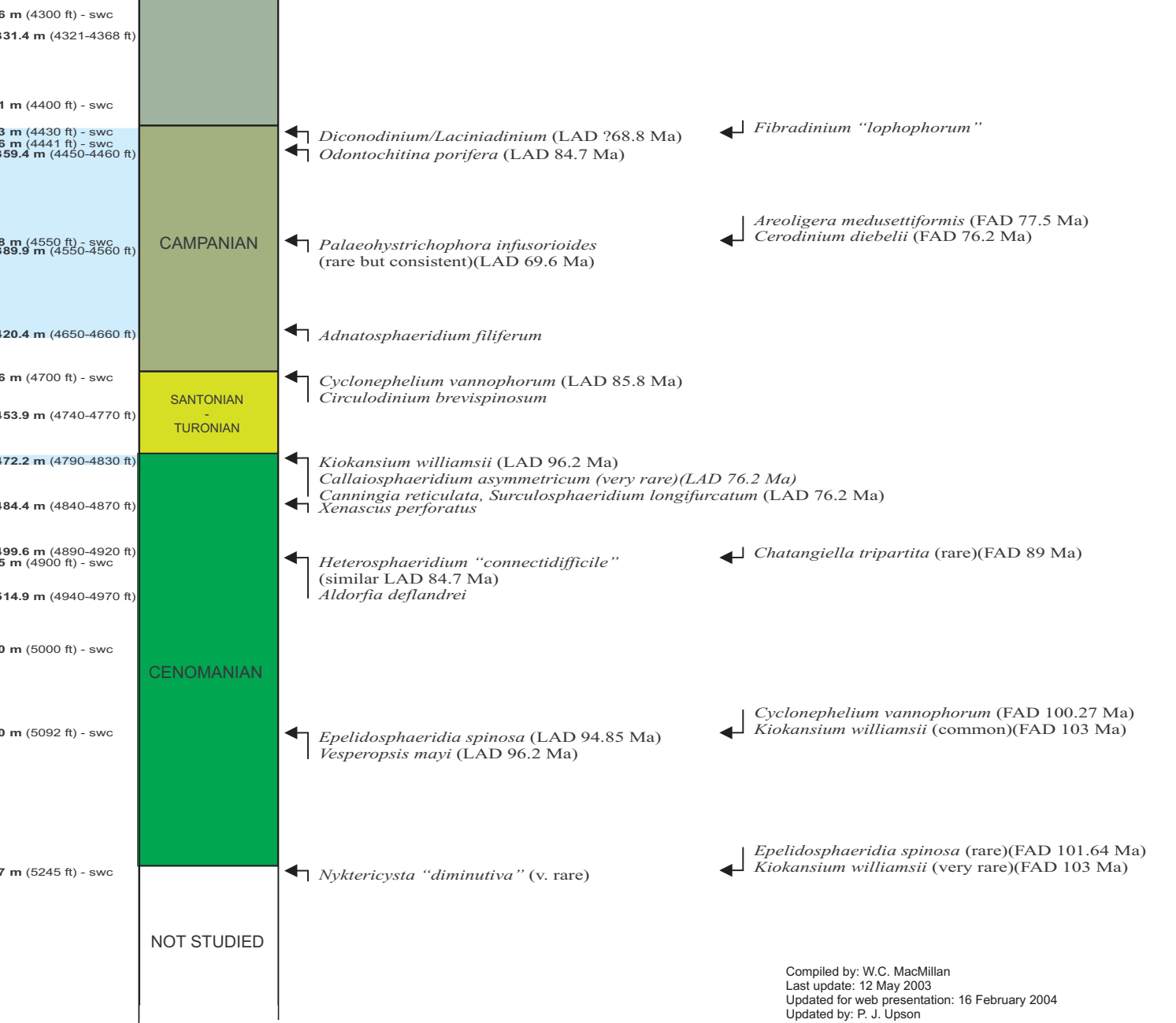
DAWSON CANYON FORMATION  
Petrel Member

WYANDOT FORMATION

WYANDOT FORMATION



- P37521 1310.0
- P39 1317.0-1318.0 (CL = 2)
- P37522 1341.0 (CL = 1)
- P37523 1350.0
- P37524 1353.0
- P40 1356.4-1357.0 (CL = 1)
- P37525 1386.0-1387.0 (CL = 3)
- P41 1386.8-1387.0 (CL = 3)
- P42 1417.3-1418.0 (CL = 3)
- P37528 1432.0 (CL = 2)
- P43 1444.6-1445.0 (CL = 2)
- P44 1460.0-1461.0 (CL = 3)
- P45 1475.2-1476.0 (CL = 3)
- P46 1490.5-1491.0 (CL = 3)
- P37530 1493.0 (CL = 3)
- P47 1505.7-1506.0 (CL = 3)
- P37531 1524.0 (CL = 3)
- P37533 1552.0 (CL = 2)
- P37534 1598.0



Compiled by: W.C. MacMillan  
 Last update: 12 May 2003  
 Updated for web presentation: 16 February 2004  
 Updated by: P. J. Upson