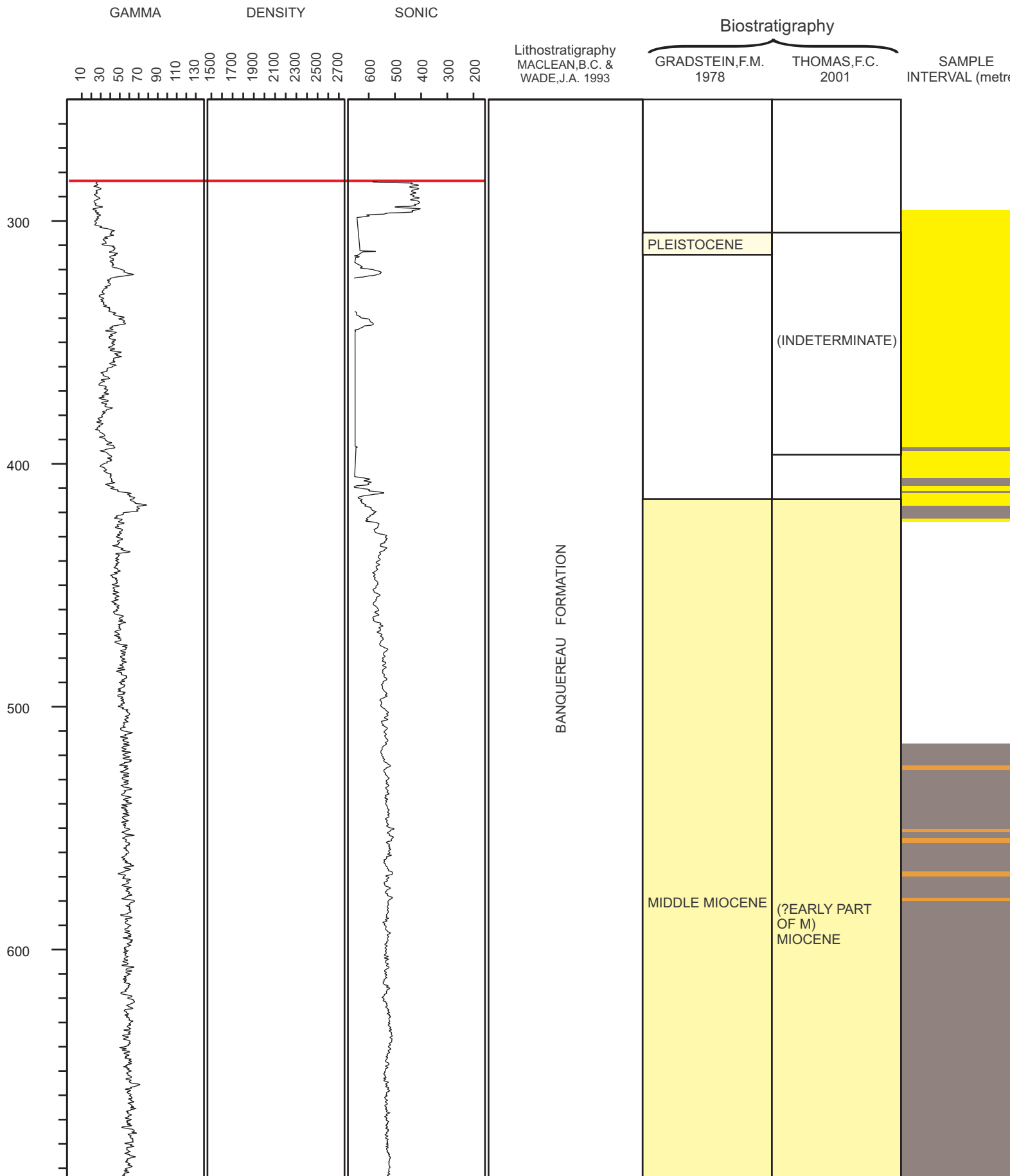


D164 Petro C
 RT: 29.9
 To accompany



Canada-Shell WENONAH J-75

m; WD: 66.8 m; TD: 3669.8 m

Report No. M.R.G.-PAL. 5-2003 RAF

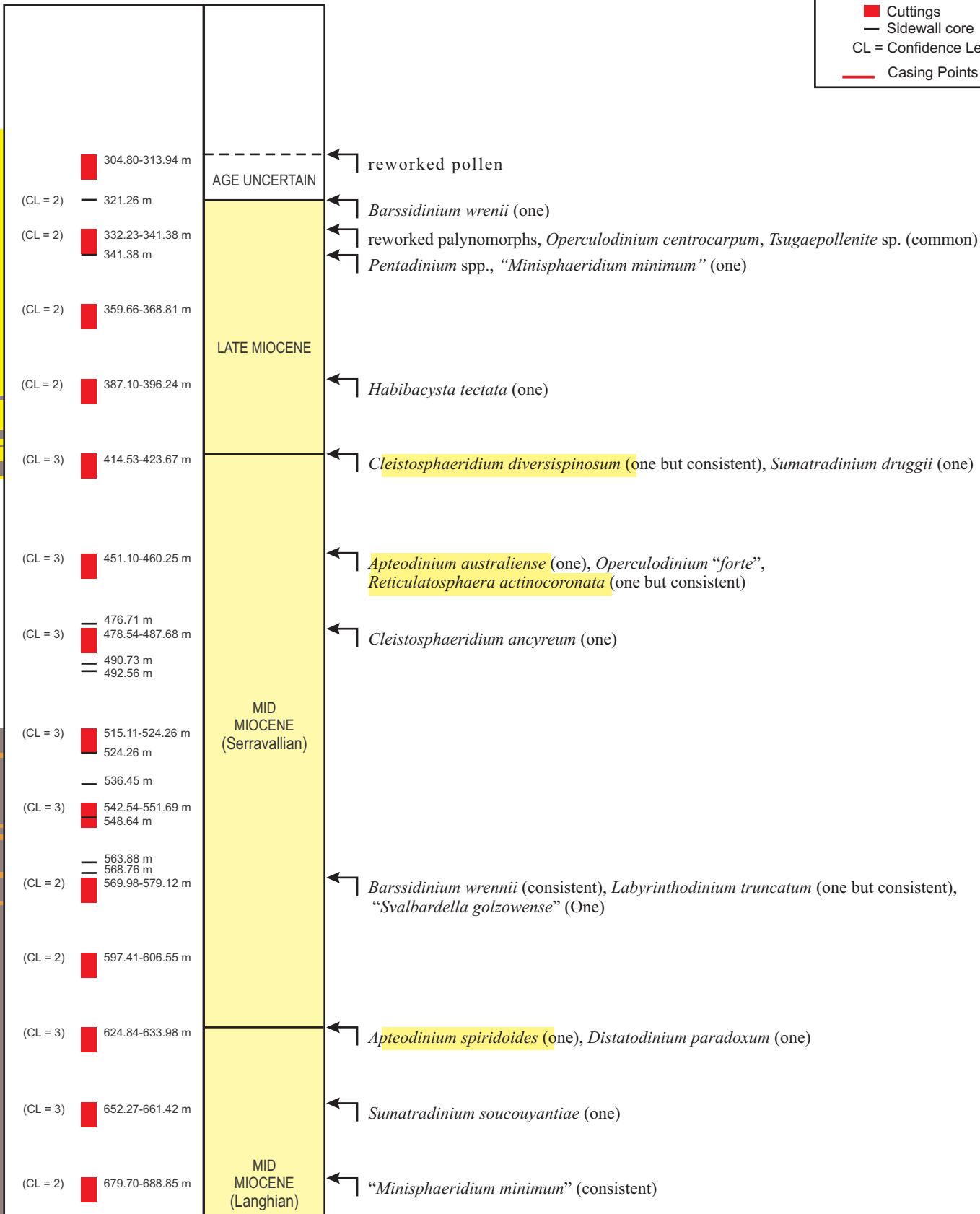
LEGEND for LITH LOG



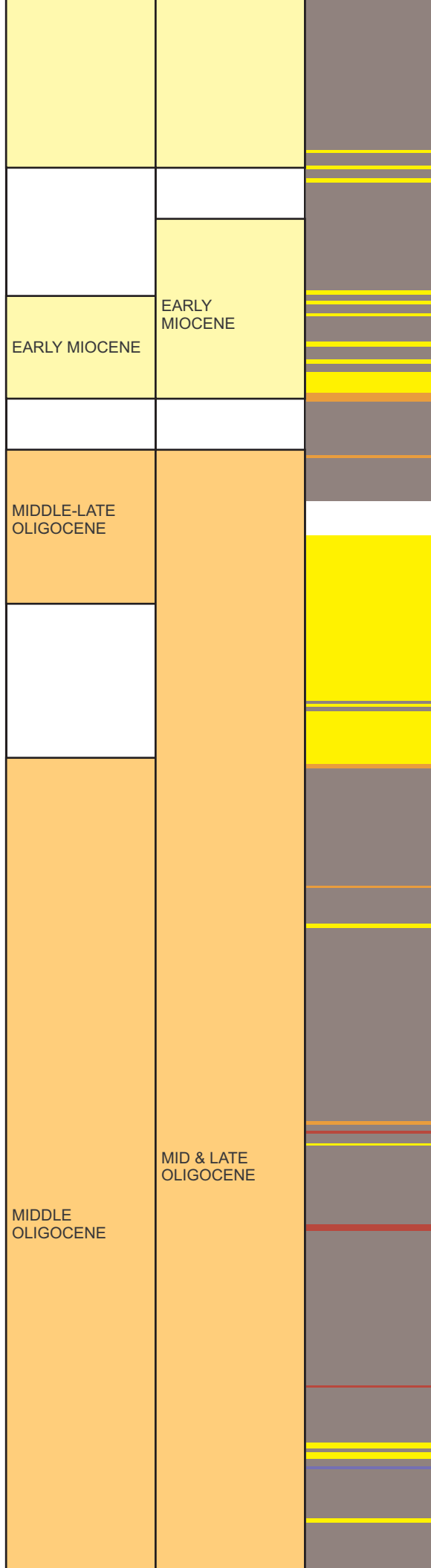
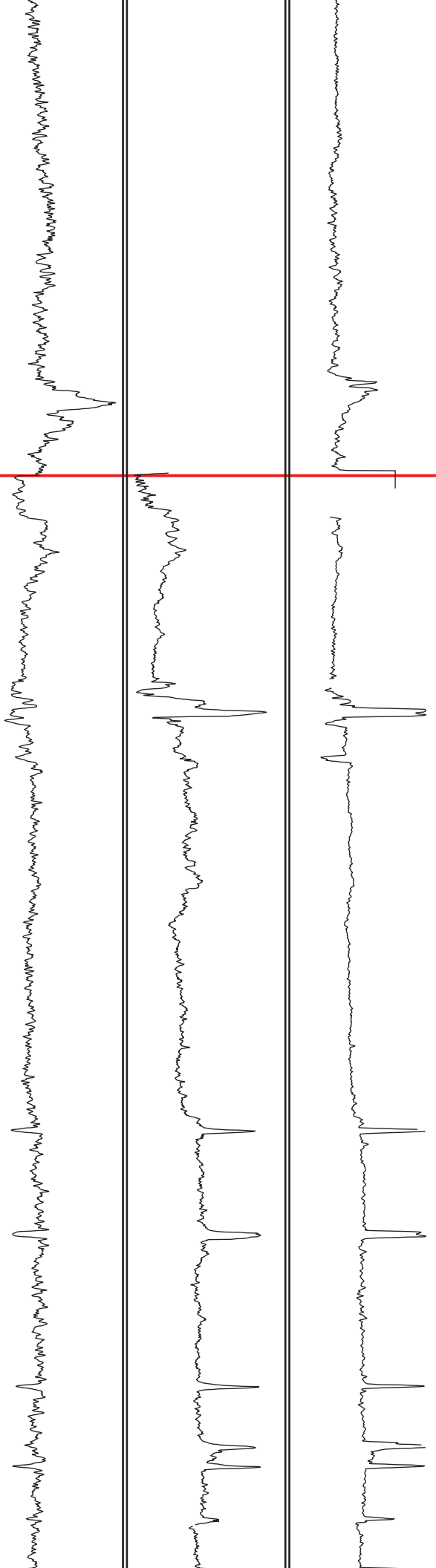
es)

PALYNOLOGY

THIS STUDY



700
800
900
1000
1100
1200



(CL = 2) 707.14-716.28 m

(CL = 3) 743.71-752.86 m

(CL = 2) 771.14-780.29 m

(CL = 2) 798.58-807.72 m

(CL = 2) 826.01-835.15 m

841.25 m

(CL = 2) 853.44 m
853.44-862.58 m
859.54 m

(CL = 2) 880.87-890.02 m

(CL = 3) 908.30-917.45 m
910.13 m

929.64 m

(CL = 3) 935.74-944.88 m

(CL = 4) 963.17-972.31 m
966.22 m

(CL = 2) 990.60-999.74 m
999.74 m

(CL = 2) 1018.03-1027.18 m
1030.22 m

(CL = 3) 1045.46-1054.61 m
1066.80 m

(CL = 3) 1072.90-1082.04 m

1100.33 m
1100.33-1109.47 m

(CL = 3) 1127.76 m
1127.76-1136.90 m

(CL = 3) 1155.19-1164.34 m
1158.24 m

(CL = 3) 1182.62 m
1182.62-1191.77 m

(CL = 3) 1210.06-1219.20 m

1228.34 m

(CL = 3) 1237.49-1246.63 m
1249.68 m

EARLY
MIOCENE
(Burdigalian)

EARLY
MIOCENE
(Aquitainian)

LATE
OLIGOCENE
(Chattian)

EARLY
OLIGOCENE
(Rupelian)

“*Oligokolpoma*” *reductum*, *Sumatradinium* spp. (peak)

Cordosphaeridium cantharellus (one and inconsistent), *Dalella* sp. (one), *Unipontidinium aquaeductum* (one)

Cordosphaeridium cantharellus (consistent)

Operculodinium microtriainum

Chiropteridium galea, *Homotryblum plectilum* (one and inconsistent), *Membranosphaeridium aspinatum*, *Wetziella simplex* (one and inconsistent)

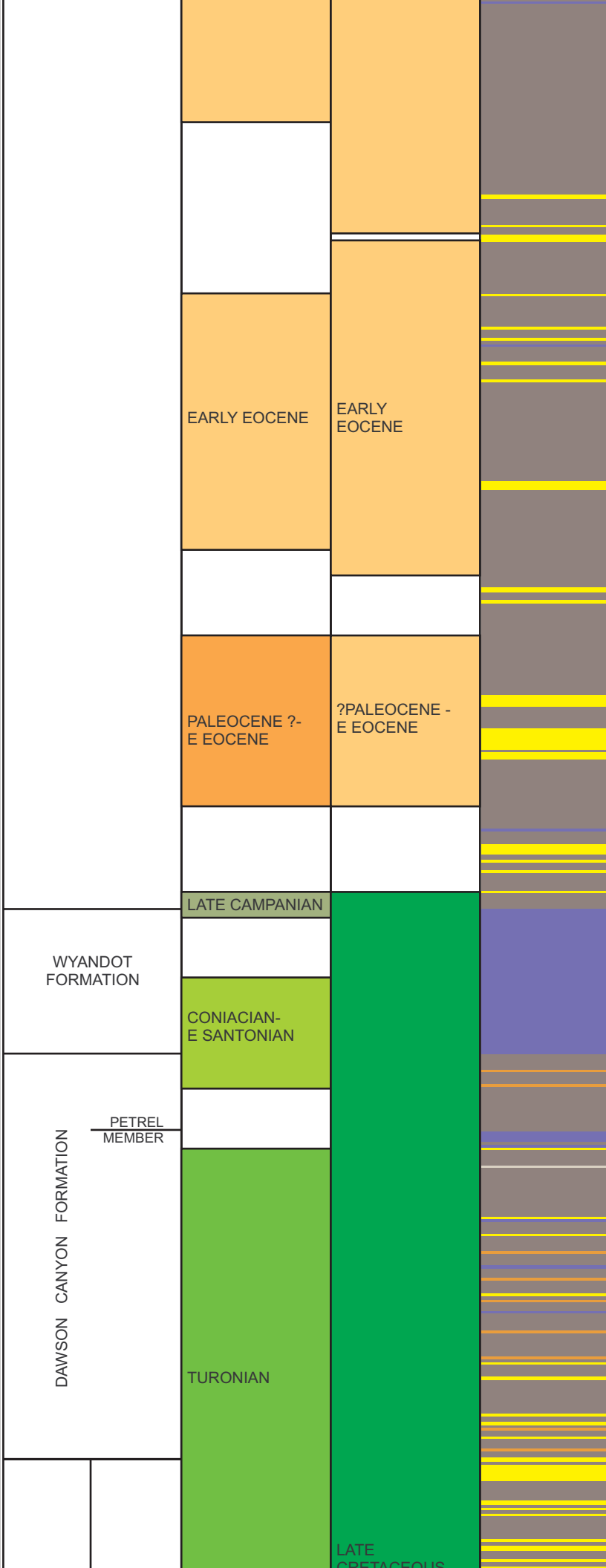
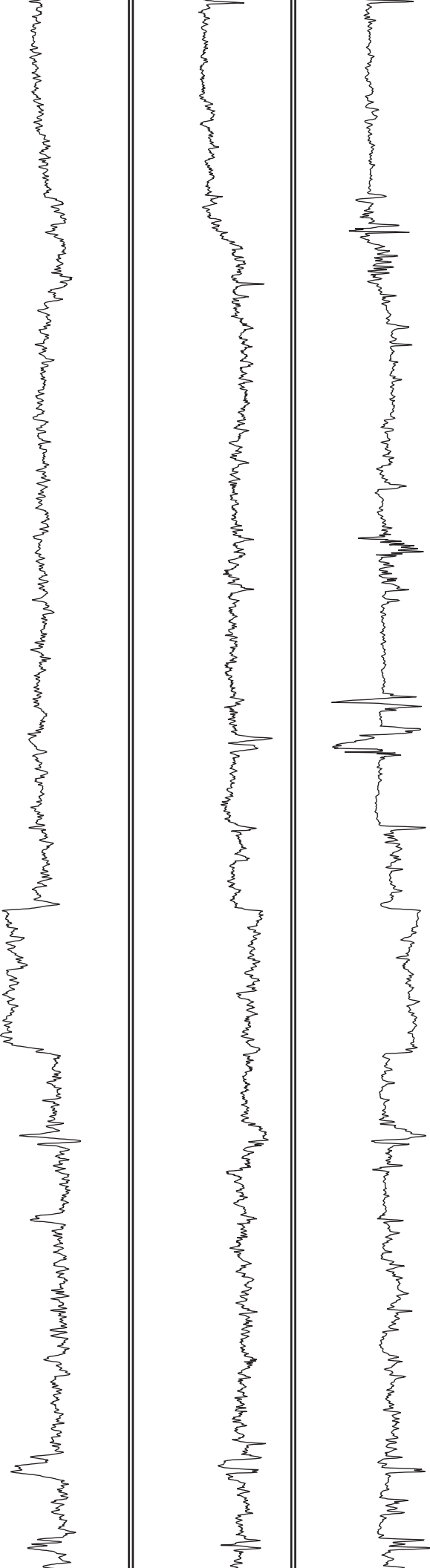
Wetziella symmetrica (one)

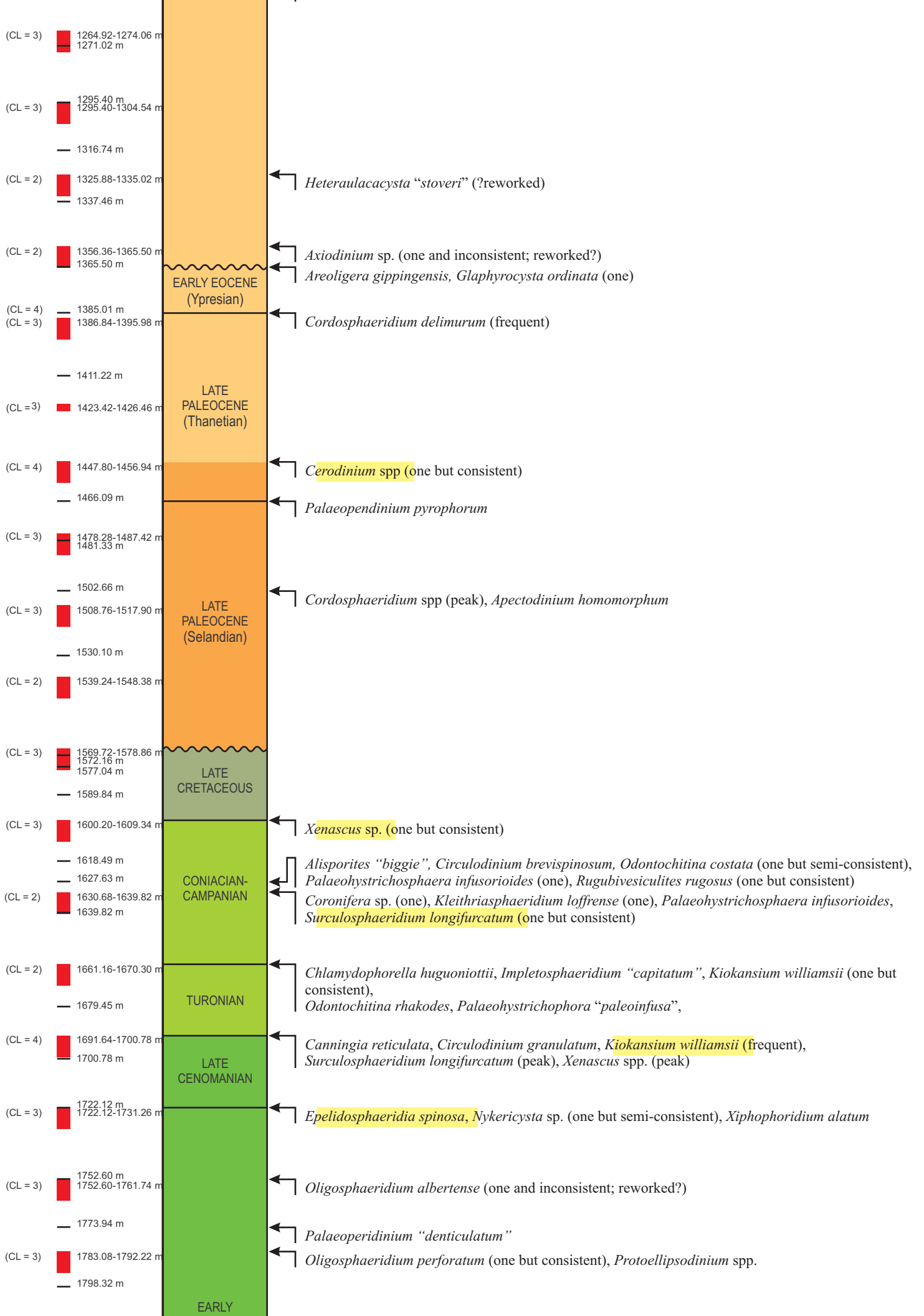
Heteraulacacysta pustulata (one but consistent), *Homotryblum plectilum* (consistent), *Wetziella simplex* (Consistent)

Chiropteridium “reticulatum” (consistent), *Glaphyrocysta “extensa”* (two but inconsistent; ?reworked), *Glaphyrocysta “semicomplexa”* (one but consistent)

Chiropteridium “processum”, *Deflandrea phosphoritica* (one), *Glaphyrocysta* spp. (not common nor consistent, but diverse; reworked?), *Homotryblum plectilum* (peak)

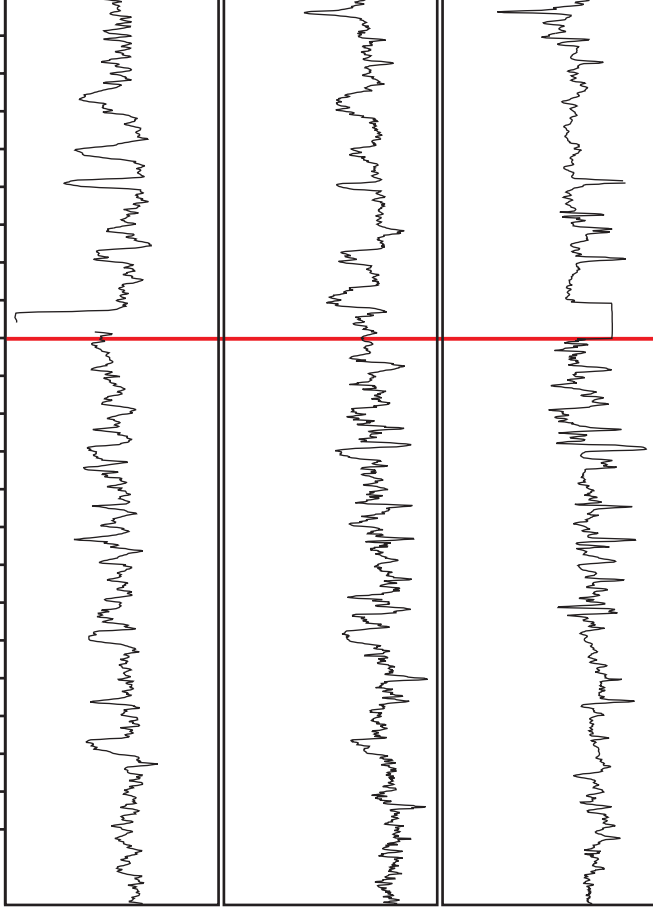
1300
1400
1500
1600
1700
1800





1900

2000



LOGAN CANYON FORMATION

SABLE MEMBER

MARMORA MEMBER

ALBIAN-
E CENOMANIAN

CENOMANIAN

CRETACEOUS

