



STAINLESS STEEL GPS PEDESTAL

Western Canada Deformation Array

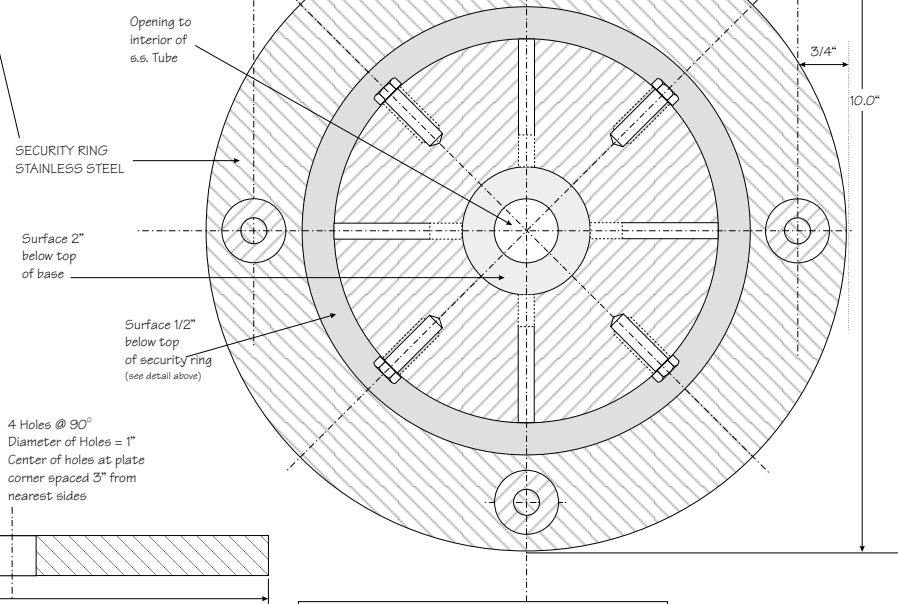
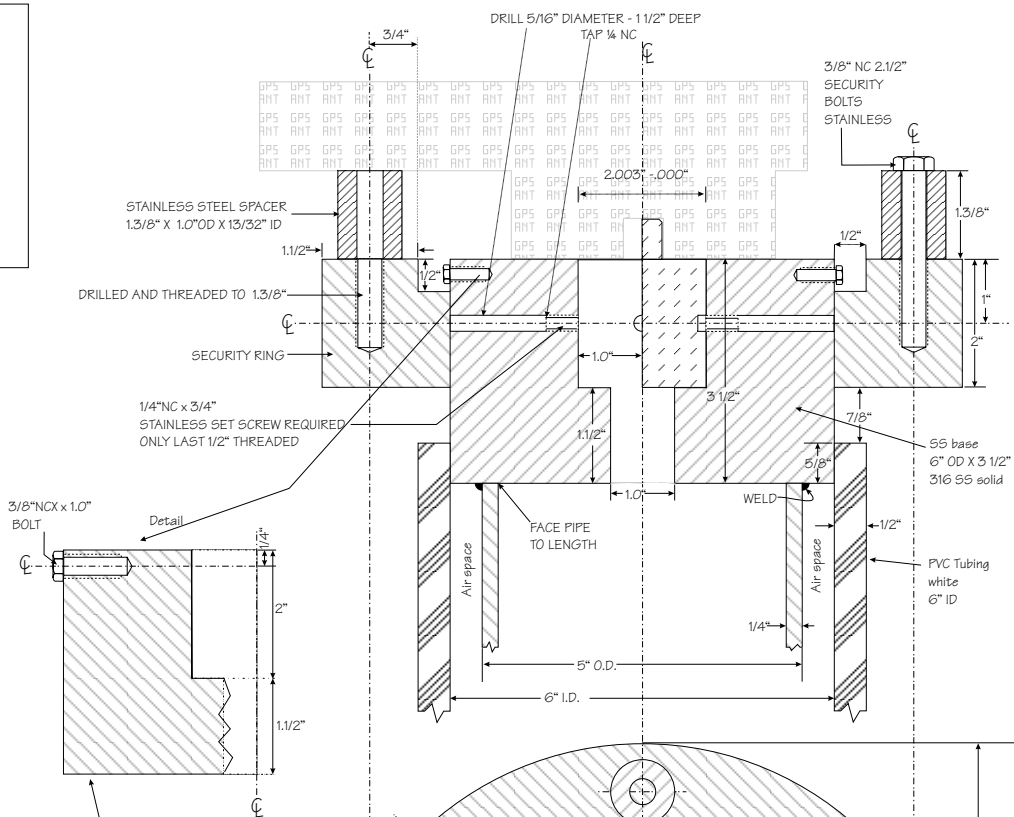
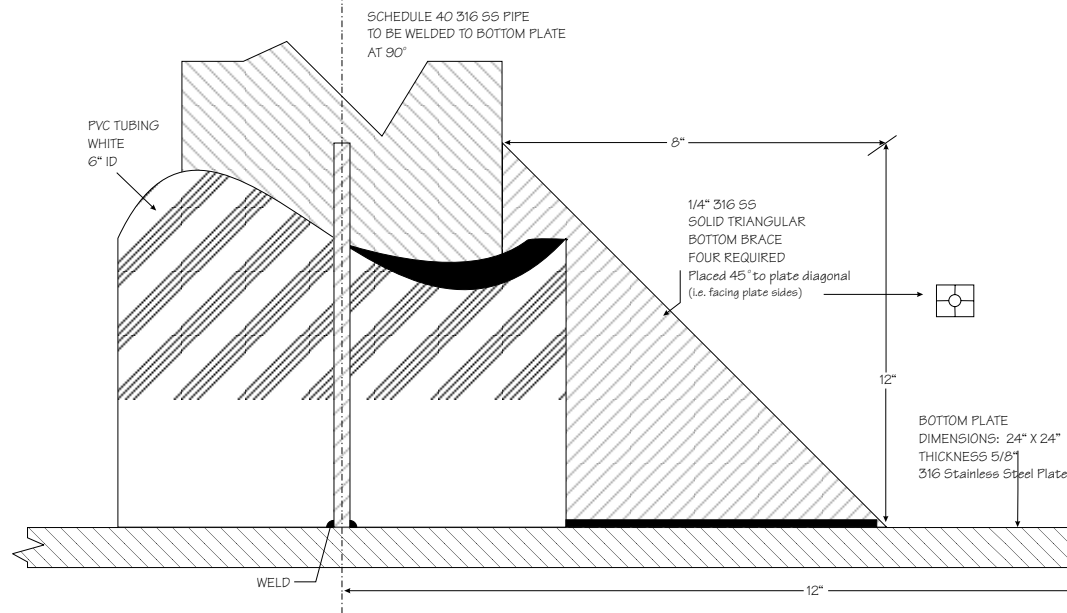
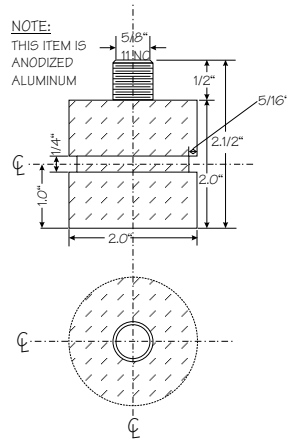
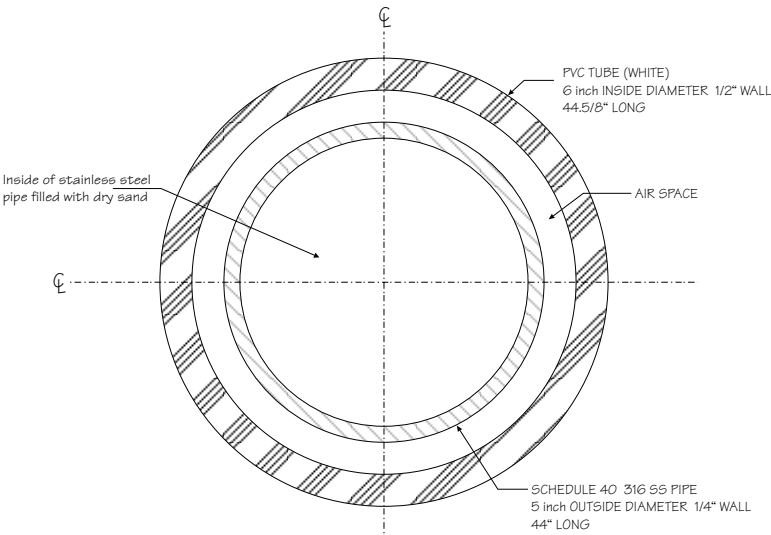
Designed by M. Schmidt, W.H. Hill
H. Dragert, N. Courtier
Geological Survey of Canada

Technical Drawing: G. Enquist
Geographic Data B.C.
M. Schmidt, GSC

schmidt@pgc.nrcan.gc.ca



not to scale



Notes:
-all welds are 3/16 fillet
-machine tolerances +/- 0.005
-all material is T-316 L Stainless Steel except as noted