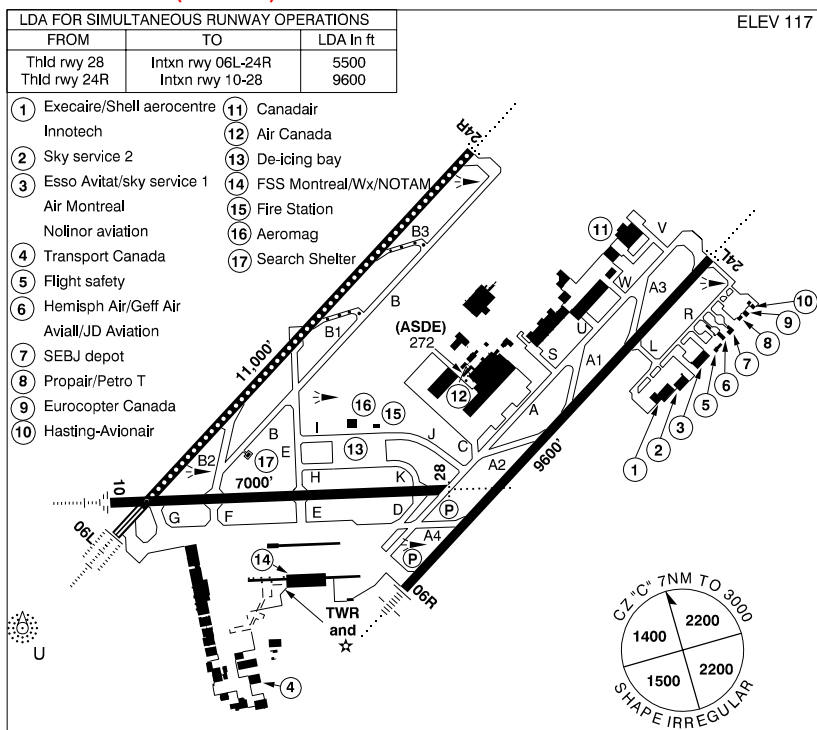




MONTRÉAL INTL (DORVAL) QC

CYUL



© 2001 Her Majesty the Queen in Right of Canada

| | |
|-----------------|---|
| REF | N45 28 05 W73 44 29 Adj SW 16°W UTC-5(4) Elev 117' VTA A5002 F-21 LO6 LO7 LO8 HI5 T2 CAP OC |
| OPR | Aéroports de Montréal 514-633-3223 Cert |
| PF | A-1,2,3,4,6 C-5 |
| CUST | AOE 888-226-7277 12-06Z† |
| FLT PLN | (bil) NOTAM FILE CYUL FSS (F) Montréal 514-633-3345 or 800-361-2848 ACC Montréal 514-633-3211 or 800-633-1353. All flt plns, IFR tng flts PPR. Flt plns by Fax at 514-633-2877 & include phone numbers where pilot can be reached prior to dep. WX W1 via Montréal FSS 1045-0030Z† daily O/T Québec FSS 800-463-4485 METAR H24. TAF H24, issue times: 00, 03, 06, 09, 12, 15, 18, 21Z. PATWAS (French) 514-747-5805 10-03Z† dly (English) 514-747-6451 10-03Z† dly |
| SERVICES | FUEL 100, JA-1, F-34, F-40, JB, FSII (CON S IP JA-1, FSII) OIL All S 1,2,3 AFF 9 SUP FL ADI, D & A-ice 514-636-1850, LHOX JASU Elect Start 10/15 PVT ADV Esso Avitat 122.85; Hudson General 122.95; Shell Aerocentre 129.3; Petro-T 122.9 514-631-3000; Aeromag 122.525; Iceman 123.125 514-636-1850; Hasting-Avionair 123.075 MIL CON Aerocentre (Shell) 514-636-5870 |
| RWY DATA | Rwy 06L(059°)/24R(239°) 11,000x200 asphalt/concrete Rwy 06R(059°)/24L(239°) 9600x200 asphalt/concrete Rwy 10(104°)/28(284°) 7000x200 asphalt/concrete |
| TWY | Twys H, I, J & K uncontrolled Twys L & R ltd to acft less than 70,000 kg unless auth by opr |
| APRON | Taxilane btwn tml bldg & boarding ramp circulation proh to acft with a wingspan of more than 55m (180.5'): B-747, B-777, A340 & A330. De-icing Bays: 1 & 5: max wingspan 64.4m (211') 2 & 4: max wingspan 34m (111.5') 3: max wingspan 47.57m (156') |
| RCR | Opr CRFI, PLR/PCN |
| LIGHTING | 06R-AN(TE HI) P3, 24L-AD AS(TE HI), 06L-AC(TE HI A TDZL), 24R-AD AS(TE HI CL), 10-AE(TE HI), 28-AD(TE HI) P3 Twy U unlgtd. |

Source of Canadian Civil Aeronautical Data © 2001 NAV CANADA



MONTRÉAL INTL (DORVAL) QC (Cont'd)

CYUL

| | |
|-------------|---|
| COMM | <p>(bil)</p> <p>RADIO Montréal 123.55 (Above 12,500 ASL) 126.7 (At or below 12,500 ASL) (E) (emerg only 514-420-7934)</p> <p>ATIS (English) 133.7 514-633-3037; (French) 127.5 514-633-3034</p> <p>CLNC DEL Dorval 125.6 all dep acft ctc clnc del</p> <p>APRON Dorval 122.075</p> <p>GND Dorval 121.9 275.8</p> <p>TWR Dorval 119.9 267.1 (E) (emerg only 514-633-3311)</p> <p>ARR Montréal Tml 118.9 124.65 126.9 132.85 287.2</p> <p>DEP Montréal Tml 118.9 124.65 268.3</p> <p>VFR ADV Montréal Tml 134.15</p> |
| NAV | <p>VOT 115.7</p> <p>NDB UL 248 (M) N45 27 36 W73 50 54 104° 3.4NM to A/D L 284 (L) N45 32 33 W73 39 25 239° 4.9NM to A/D U 201 (L) N45 27 15 W73 46 25 059° 0.6NM to A/D M 348 (L) N45 31 26 W73 39 16 239° 3.8NM to A/D</p> <p>VOR/DME YUL 116.3 Ch 110 N45 36 57 W73 58 15 135° 12.9NM to A/D</p> <p>DME IUL 109.3 Ch 30 N45 27 51 W73 45 48 IOA 110.5 Ch 42 N45 27 33 W73 44 15</p> <p>ILS IDO 109.9 (Rwy 10-28); IZZ 111.9 (Rwy 24R); IMQ 110.5 (Rwy 24L) RVR; IUL 109.3 (Rwy 06L) RVR; IOA 110.5 (Rwy 06R) RVR</p> |
| PRO | <p>Rgt hand circuits rwys 06R, 10 & 24R. Transponder with mode "C" required in CZ. Dur certain wx cond rstd parallel ILS apchs may be used. When informed by ATIS or by the arr controller that simultaneous ILS apchs are in progress, pilots shall advise the arr controller immediately of any avionics unsvc or if unable to comply. Peak tfc period: 11-1330Z† & 20-0030Z† Mon-Fri. Prior to taxiing, obtain IFR clnc, then ctc apron ctl & specify your position & rwy cleared for. Standardized use of freq 123.2 in class G airspace fr the NE to the W of control zone. No Ab Initio tng.</p> <p>De-icing:</p> <ol style="list-style-type: none"> 1. Notify Aeromag with 30 min prior ntc when de-icing is rqr'd with de-icing type rqr'd; 2. on twys H, I, J or K, hold short of de-icing pad & ctc Aeromag De-icing Centre on 122.525; 3. follow instructions & guidance lights to de-icing bays; 4. when directed by Aeromag, ctc lceman on 123.125 with brakes set, acft configures & engines on idle; 5. after de-icing, do not move acft & ctc Aeromag on 122.525 to obtain taxi clnc; 6. do not exit fr twys H, I, J or K without clnc fr gnd con. <p>Principal altn & rerouting apt for the Montréal area is Montréal Intl (Mirabel).</p> <p>VFR Codes: Acft planning to enter Dorval CZ call ACC flight planning at 514-633-3211 or 800-633-1353 or Montréal FSS on freq 126.7 or 123.55 to obtain discrete transponder code 10 min before entering the CZ.</p> <p>SIGHTSEEING (See VTPC) Ville-Marie Circuit: Fr Lafontaine Tunnel proceed to the Olympic Stadium, then to the St-Joseph Oratory, passing around Mount-Royal counterclockwise while staying E of Decarie Autoroute, then to the Concorde Bridge & follow the W shore of the St-Lawrence River to the Lafontaine Tunnel.</p> <p>Procedures:</p> <ol style="list-style-type: none"> 1. Maintain alt assigned by the Dorval Control Tower. 2. Inform Dorval Control Tower of intention to leave this circuit when near Mount-Royal. 3. Leave the circuit at following points: <ol style="list-style-type: none"> A) Victoria Bridge to exit for St-Hubert, B) Lafontaine Tunnel to exit to the North, C) Mercier Bridge to exit toward the South or the Southwest. <p>Banner Towing & Aerial Photography: Specific VFR flight such as banner towing & aerial photography should be coordinated with Dorval Control Tower supervisor at 514-633-3311 with at least 1 hr prior notice.</p> <p>Low Visibility Procedures: See CAP</p> <p>HELI NOISE Use Heli routes as depicted on VTPC or as directed by ATC. Noise oprg restriction & noise abatement procedure in effect. See CAP</p> |