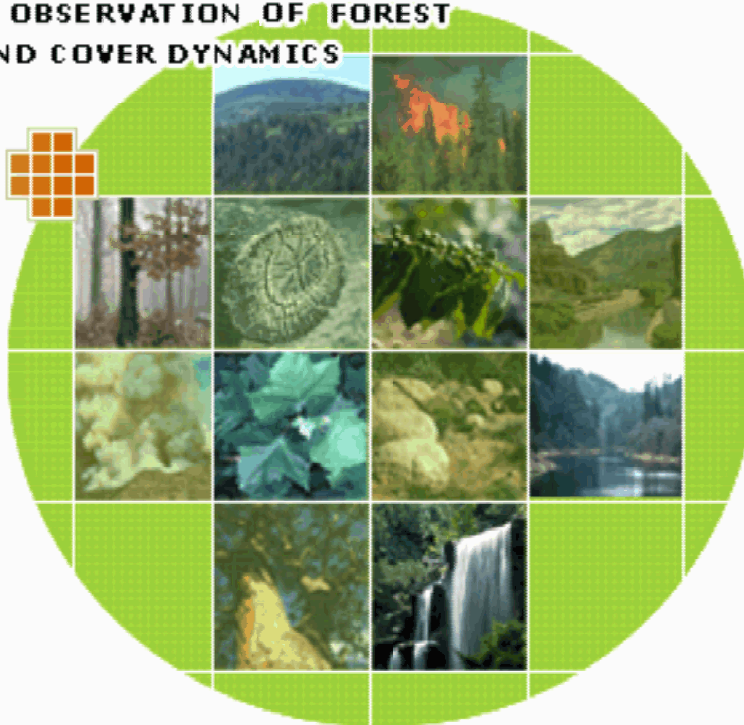


GOFC-GOLD

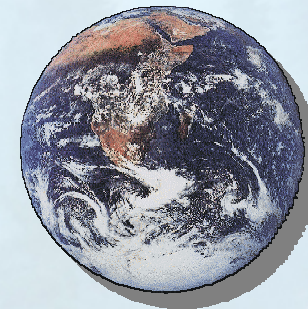
GLOBAL OBSERVATION OF FOREST
AND LAND COVER DYNAMICS



The GOFC-GOLD Mission

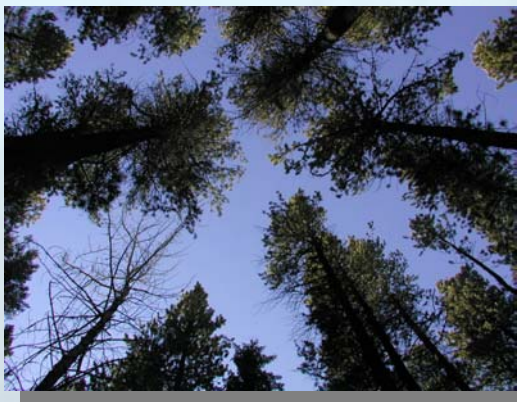


- A coordinated international effort to supply space-based and *in situ* forest and land cover observations and to obtain an accurate, reliable and quantitative understanding of global change processes.
- A panel under the United Nations' FAO Global Terrestrial Observing System.



Roles of GOFC-GOLD

- Improve applications and awareness of new methods of observation, especially remote sensing.
- Make *in situ* (ground-based) observations more available.
- Improve understanding of the causes of changes and their impacts.



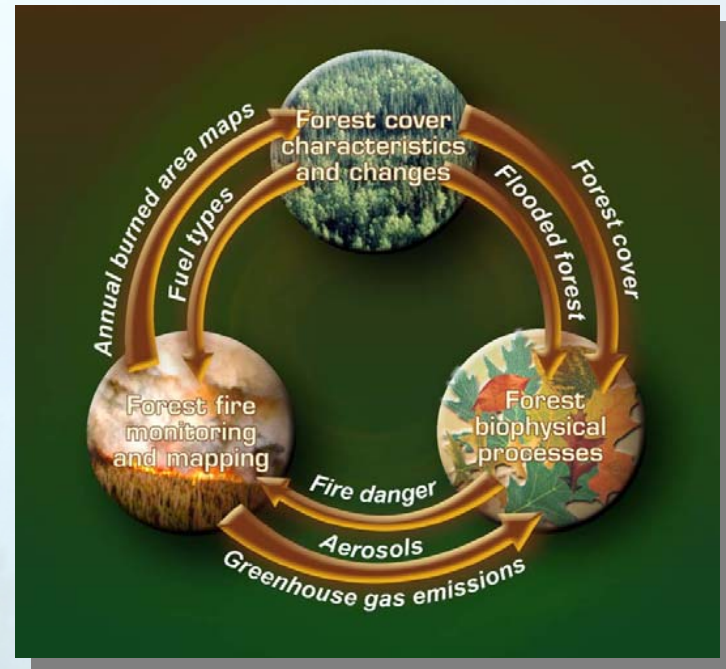
Implementation Strategy

Scope of operation:

- Regional networks that exist throughout the globe (e.g. Miombo, South East Asia, etc...)
- GOFC promotes global standards, methods and products which can be applied universally throughout the globe.
- Pilot projects such as the pathfinder programs demonstrate this global approach.

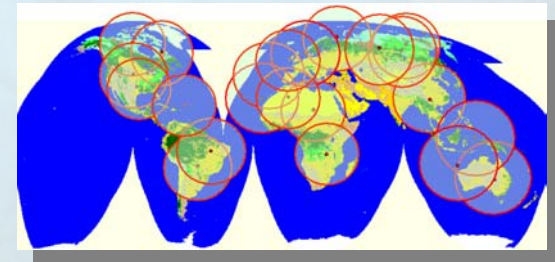
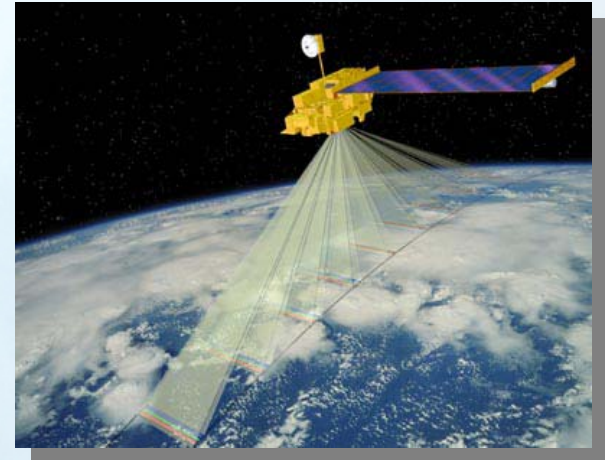
Complimentary themes:

- Land Cover Characteristics and Change
- Fire Monitoring and Mapping
- Biophysical Processes



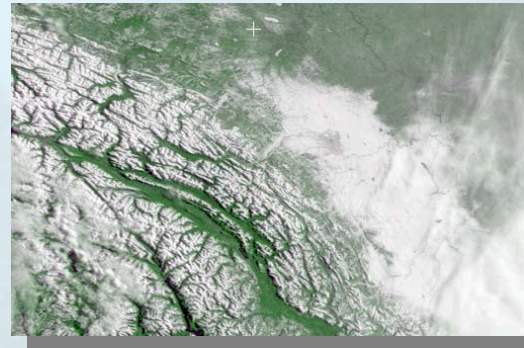
Uncertainties Concerning Forest and Land Cover Monitoring

- Countries have different definitions and protocols.
- Varying national capabilities to monitor forests and land cover.
- Limitations on the use of remote sensing data:
 - High cost of imagery for developing countries and ENGOs
 - Satellite acquisition strategies that do not meet user requirements



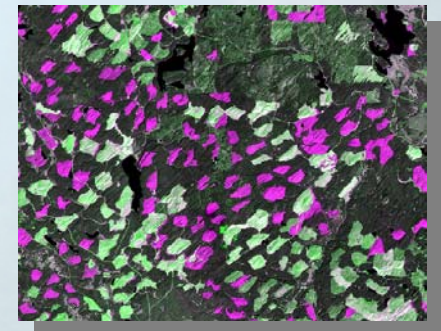
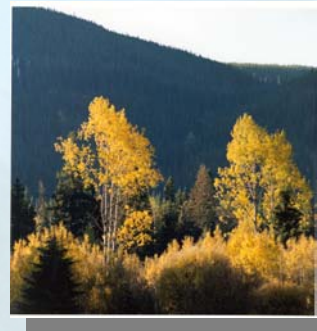
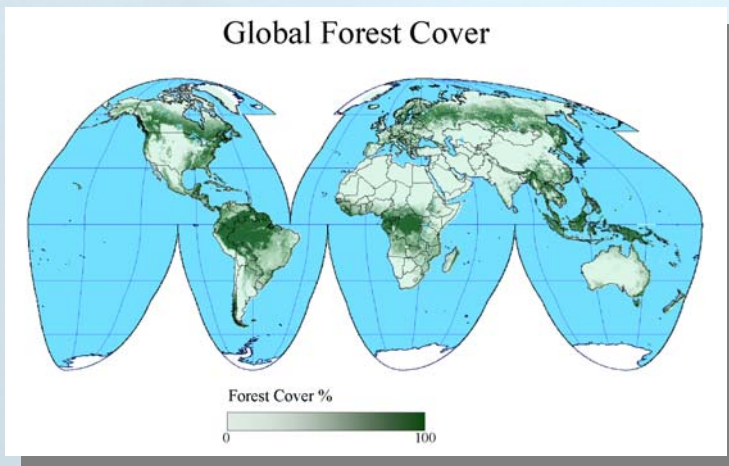
Basic Requirements for Products

- Data must be low cost, preferably free.
- Data and products must be easily accessible.
- Quality assessment must accompany products.
- Products must be validated.
- Products must be adopted and used by operational agencies to be deemed successful.



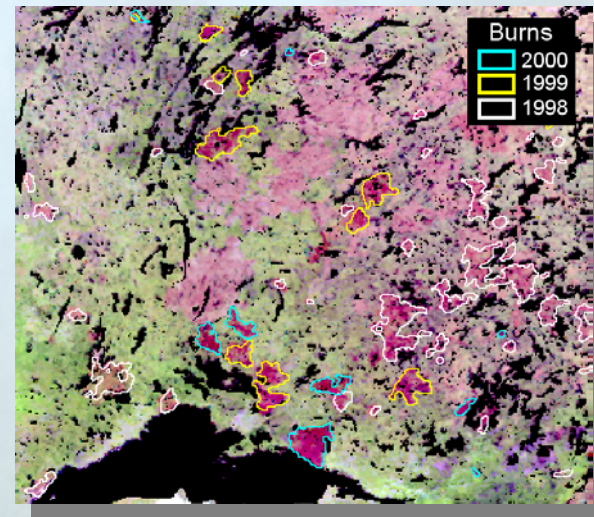
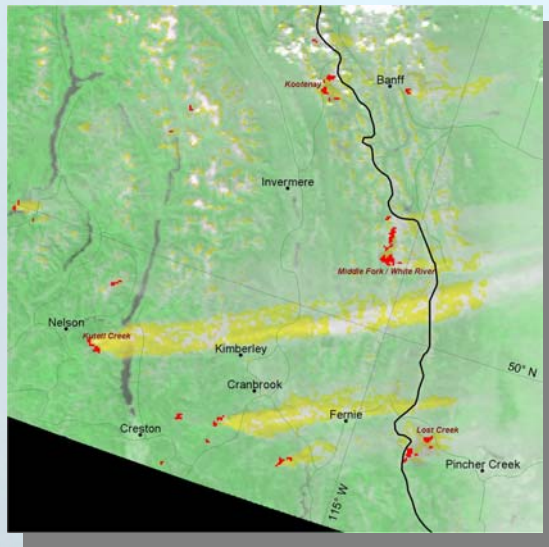
Land Cover Characteristics and Change Theme

- Global and regional observations are needed by resource managers, policy makers and scientists for operational land management, to understand the global carbon cycle and to assess biodiversity dynamics.



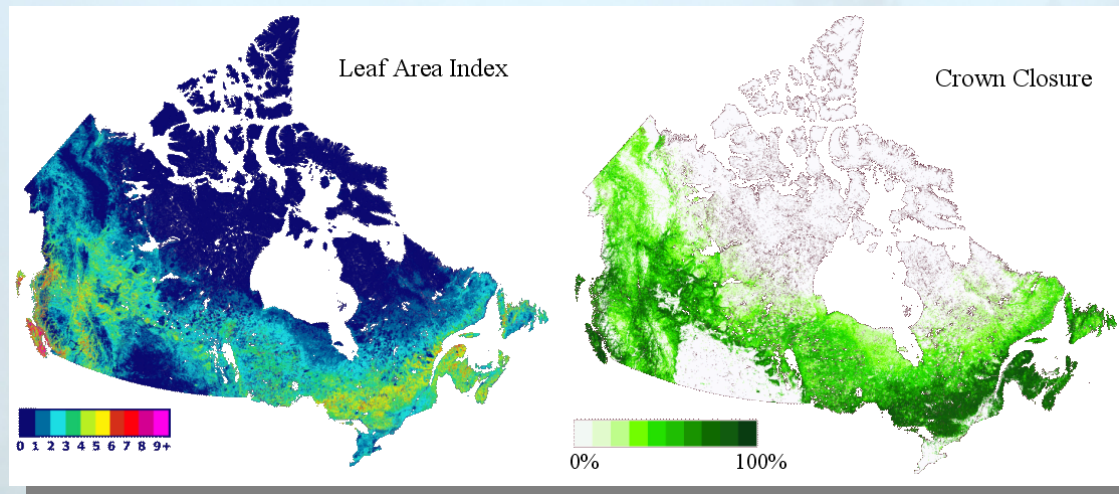
Fire Monitoring and Mapping Theme

Promotes the use of space-based observations for monitoring fire activity and mapping burned areas at global and regional scales.



Biophysical Processes Theme

- Provides ready access to global and regional biophysical products that are calibrated, validated, and documented.
- Clients include earth systems scientists and national and international policy makers.



Regional Networks

- Provide guidance on regional needs and capabilities.
- Current network initiatives
 - SEARRIN - South East Asia
 - OSFAC - Central Africa
 - Miombo - Southern Africa
 - SAFNET – Southern Africa
 - NEARIN – Fennoscandia and Russia
 - Siberia East Asia (under discussion)
 - Latin America (under discussion)



Project Secretariat

Northern Forestry Centre, Edmonton, CANADA

- Supported by the Canadian Space Agency and Natural Resources Canada.
- Executive Director and support staff.
- Supports international participation in GOFC/GOLD meetings.
- Facilitates access to regional and global data sets.
- Coordinates / promotes Canadian contributions to GOFC-GOLD.



GOFC-GOLD Secretariat
Natural Resources Canada
Canadian Forest Service
5320 - 122 Street
Edmonton, Alberta
T6H 3S5
Tel.: (780) 435-7210
Fax: (780) 435-7359
<http://www.fao.org/gtos/gofc-gold>