

What to do

Assess the scene - Timing is crucial. Consider the condition of the casualty, hazards at the scene and the time required to activate Emergency Medical Services (EMS). If you can activate EMS quickly, then do so.

Activate Emergency Medical Services (EMS).

Get help! Use a telephone or radio, Flag down a passing motorist or go and find help. Give clear directions to the scene and, if possible, have someone wait by the road to show the way.

Return to Scene

If you had to leave the scene to get help, quickly try to bring back with you materials that will help with the rescue such as a first aid kit, fire extinguisher, blanket, tractor, chains, boards, cell phone etc.

Stabilize scene

Is the casualty in immediate danger of further injury? Will it be dangerous for you to approach the casualty? Without putting yourself in danger, is there anything you can do to lessen the danger of further injury to the casualty?

The casualty should not be moved unless in imminent danger of further injury.

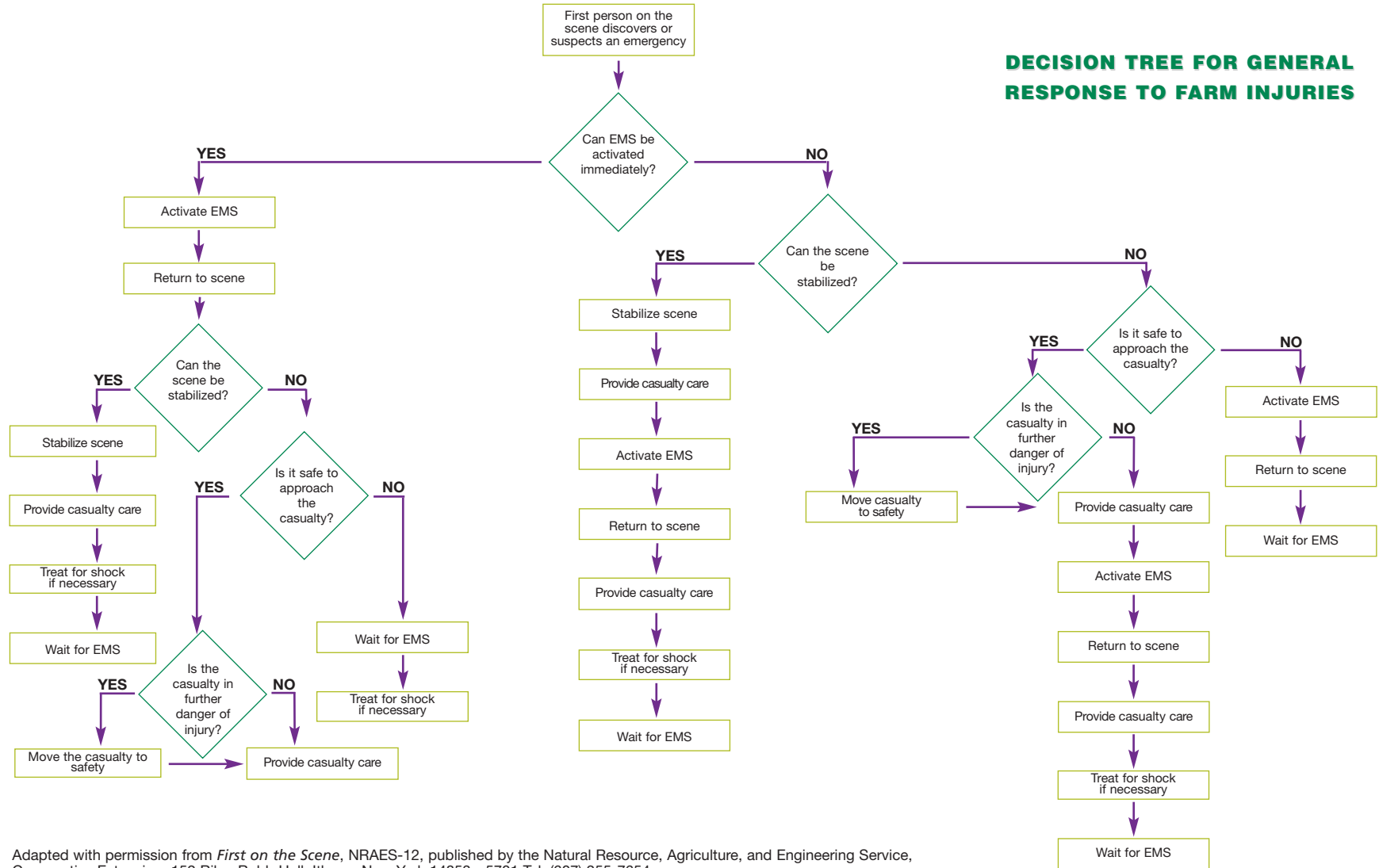
Care for casualty

Breathing and bleeding are the major concerns. If spinal injuries are suspected, do not move the casualty.

Breathing: If casualty is not breathing and you don't suspect spinal injuries, open the airway by tilting casualty's head back and lifting chin. Do mouth-to-mouth breathing or CPR if necessary.

Bleeding: Place a bandage (perhaps a piece of your clothing) over the wound and apply direct pressure with the palm of your hand.

Treat for shock - Keep the casualty lying down, reassured and warm. Do not give anything to eat or drink.



Adapted with permission from *First on the Scene*, NRAES-12, published by the Natural Resource, Agriculture, and Engineering Service, Cooperative Extension, 152 Riley-Robb Hall, Ithaca, New York 14853 - 5701 Tel: (607) 255-7654

FARM EMERGENCY INFORMATION

Who to call

Dial 9-1-1 or EMERGENCY CONTACTS:

Fire: _____

Police: _____

Ambulance: _____

Poison Control: _____

Electric Utility Co.: _____

Gas Utility Co.: _____

Family: _____

Neighbour: _____

What to say

First, give the dispatcher your name and phone number:

Name of farm owner/operator: _____

Phone: _____

DIRECTIONS TO THE FARM

(List the appropriate information: GPS coordinates, land location, six-digit rural property number, or nearest road intersection and landmarks.)

What to tell dispatcher

- 1) The location of the emergency scene
- 2) The nature of the incident (fall, electrocution, entrapment by tractor, entanglement etc.)
- 3) The number of casualties
- 4) The condition of casualty (bleeding, breathing difficulty, entanglement, amputation etc.)
- 5) The type of aid that has been given (CPR, tractor has been shut off etc.)
- 6) Whether someone will meet EMS at the road entrance to a remote location
- 7) Any special conditions that may hinder rescue, such as known medical conditions of casualty (heart, diabetes, epilepsy) or difficulty reaching the emergency site (mud, fallen trees, up a silo, etc.)
- 8) Other information as necessary

DO NOT HANG UP PHONE UNTIL ADVISED BY DISPATCHER TO DO SO.

First Aid Kit located at: _____

Fire Extinguisher located at: _____

Self-contained Breathing Apparatus located at: _____

For training or more information contact:

Your local **St. John Ambulance Canada** office or,
1900 City Park Drive, Suite 400, Ottawa ON K1A 1A3
Tel: (613) 236-1283 Fax: (613) 236-2425
www.sja.ca

Your local **Canadian Red Cross Society** office or
170 Metcalfe Street, Suite 300, Ottawa ON K2P 2P2
Tel: (613) 740-1900 Fax: (613) 740-1911
www.redcross.ca

Canadian Agricultural Safety Association (CASA)
P O Box 76 103 Hospital Drive, Saskatoon SK S7N 0W8
Tel: (306) 966-8499 Fax: (306) 966-8891
www.casa-acsa.ca

Canadian Federation of Agriculture (CFA)
1101-75 Albert Street, Ottawa, Ontario K1P 5E7
Tel: (613) 236-3633 Fax: (613) 236-5749
www.cfa-fca.ca

Institute of Agricultural Rural and Environmental Health (I.ARE.H)
P O Box 120, 103 Hospital Drive, Saskatoon, SK S7N 0W8
Tel: (306) 966-8286 Fax: (306) 966-8799
<http://iareh.usask.ca>

Your local contact

Aussi disponible en français. Télé : (306) 966-8286

This brochure has been brought to you by:



Agriculture and Agri-Food Canada

Agriculture et Agroalimentaire Canada



I.ARE.H
Institute of Agricultural Rural and Environmental Health



Printing Services • 966-6639
University of Saskatchewan

FARM EMERGENCY INFORMATION



Who to call.

What to say.

What to do.