

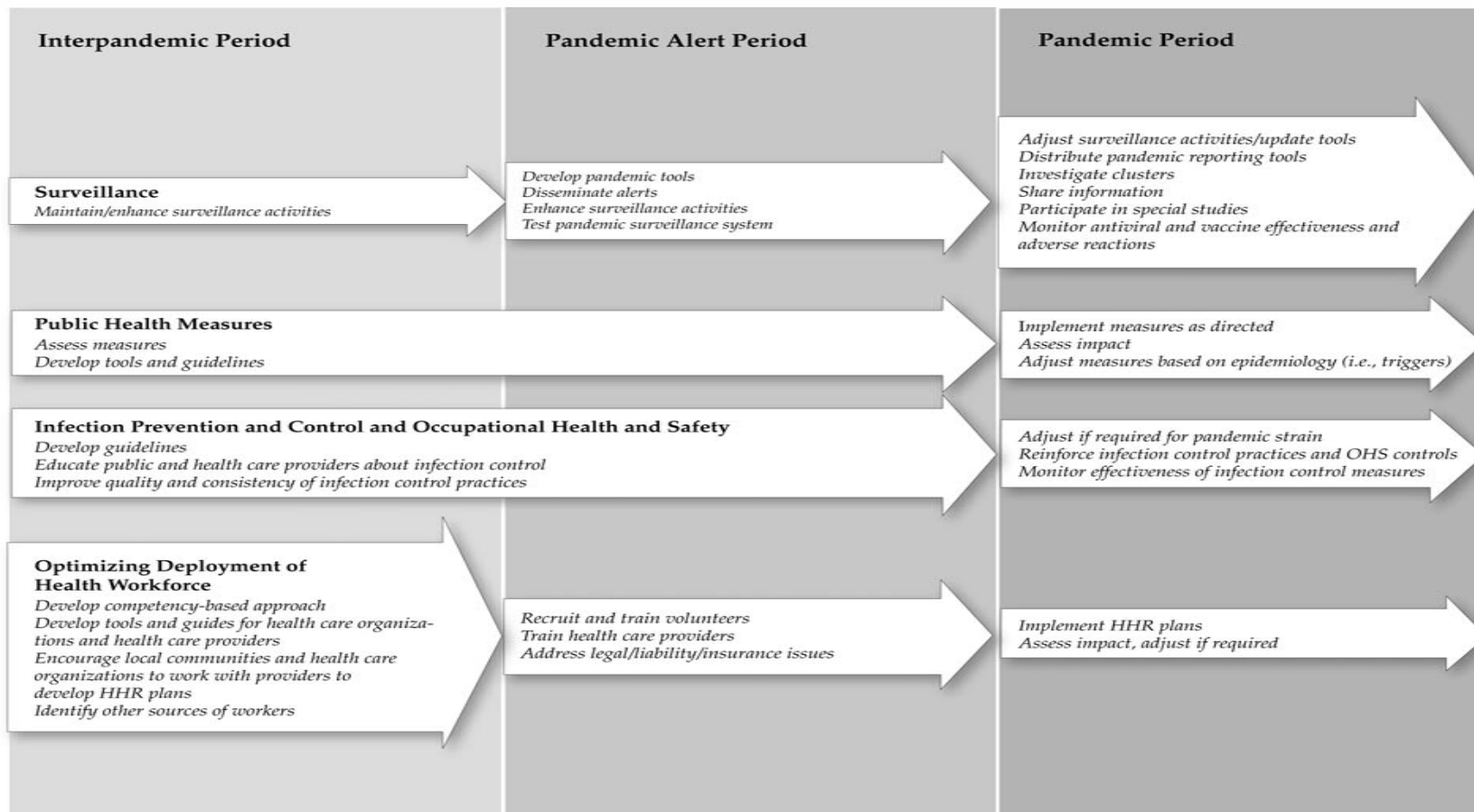


# Ontario Health Plan for an Influenza Pandemic 2006

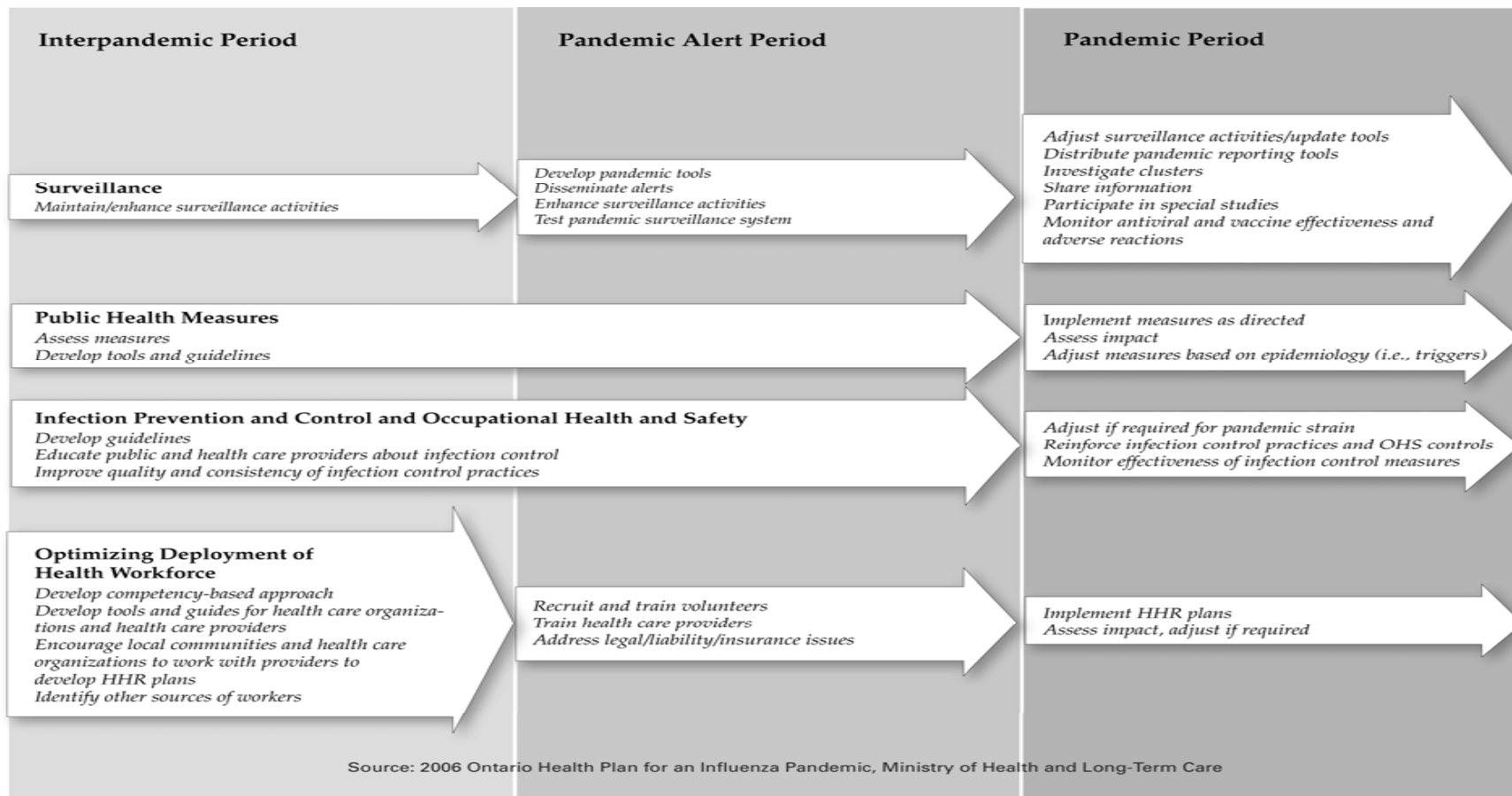
## Common Diagrams and Figures to use for presentations

(to access one or more figures/diagrams, download this presentation  
and double click on the figure/diagram you wish to use)

# Summary of Pandemic Planning and Response Activities by Pandemic Period



## Summary of Pandemic Planning and Response Activities by Pandemic Period – Con't



## Estimated Impact of an Influenza Pandemic by Attack Rate (based on a moderate scenario - 1968-like virus)

		Attack Rate 15 %			Attack Rate 25 %			Attack Rate 35 %		
	Source	min	Most likely	max	min	Most likely	max	min	Most likely	max
1. Estimated population 2005	2001 Census		12,541,410		12,541,410		12,541,410		12,541,410	
2. # of people ill enough to remain home	% of total population (1)		1,881,212		3,135,353		4,389,494			
3. # of people who can be managed through self care	#2 minus 4, 5 and 6	1,091,493	<b>850,950</b>	405,299	1,819,155	<b>1,418,251</b>	675,501	2,546,817	<b>1,985,552</b>	945,699
4. # of people who will require an outpatient visit	FluAid 2.0	778,612	<b>1,002,455</b>	1,438,840	1,297,686	<b>1,670,758</b>	2,398,065	1,816,761	<b>2,339,060</b>	3,357,292
5. # of people hospitalized who will recover	FluAid 2.0	8,165	<b>22,624</b>	28,470	13,608	<b>37,705</b>	47,450	19,052	<b>52,787</b>	66,431
6. # of fatal cases (70% in hospital)	FluAid 2.0	2,942	<b>5,183</b>	8,603	4,904	<b>8,639</b>	14,337	6,864	<b>12,095</b>	20,072
7. # of hospitalizations (recoveries + 70% of fatal cases)	#5 plus 70% of #6	10,224	<b>26,252</b>	34,492	17,041	<b>43,752</b>	57,486	23,857	<b>61,254</b>	80,481

Source: 2006 Ontario Health Plan for an Influenza Pandemic, Ministry of Health and Long-Term Care

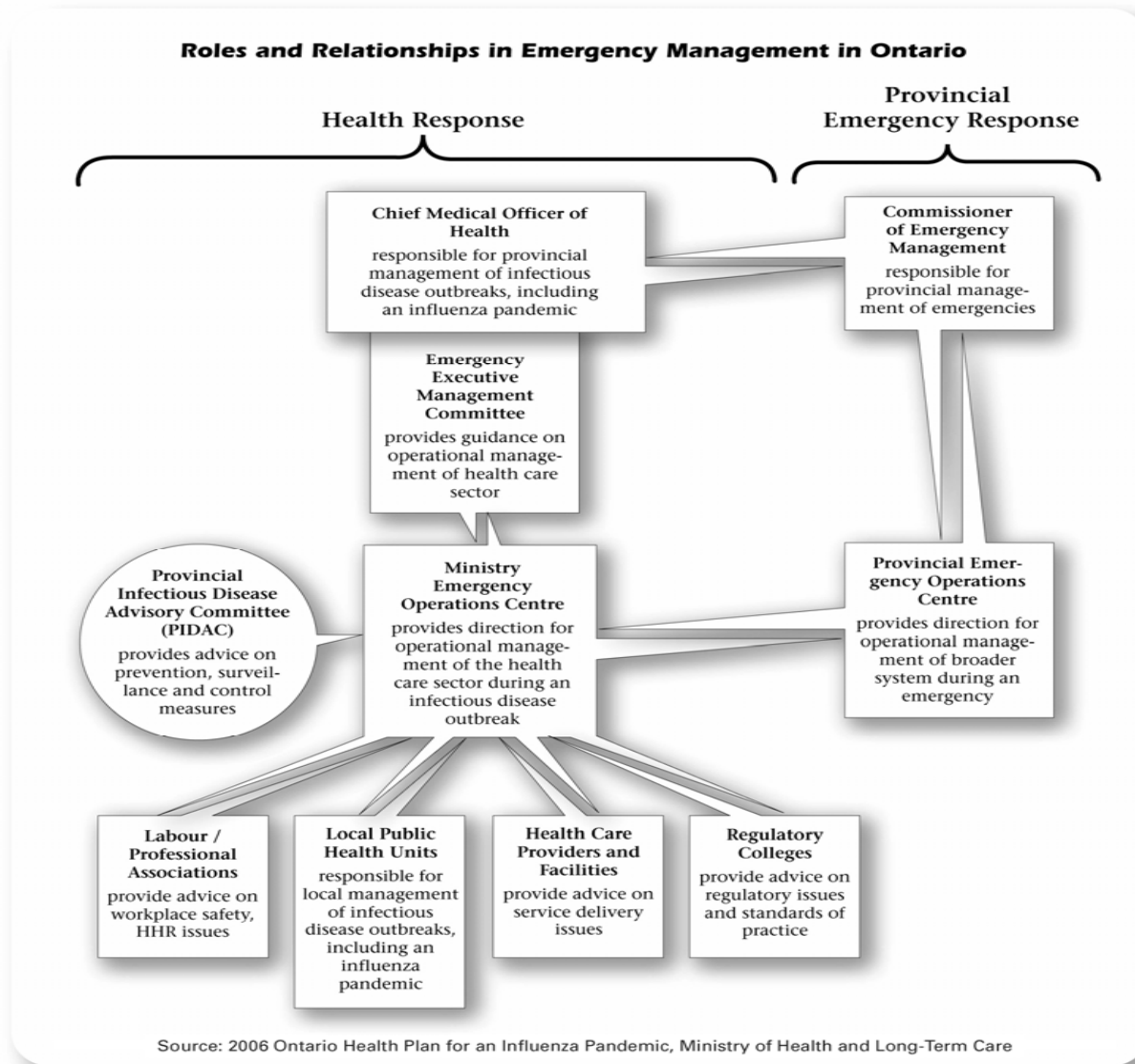
## **Number of People Affected as a Percentage of the Population (based on a 35% attack rate)**

	# of People	% of People who are Clinically Ill (#2 in Table 3.1)	% of Total Population (#1 in Table 3.1)
People who can be managed through self care	1,985,552	45.2%	15.8%
People who will require an outpatient visit	2,339,060	53.3%	18.7%
People who will be hospitalized and recover	52,787	1.2%	0.4%
Fatal cases (70% in hospital)	12,095	0.3%	0.1%
Hospitalizations (recoveries + 70% of fatal cases)	61,254	1.4%	0.5%

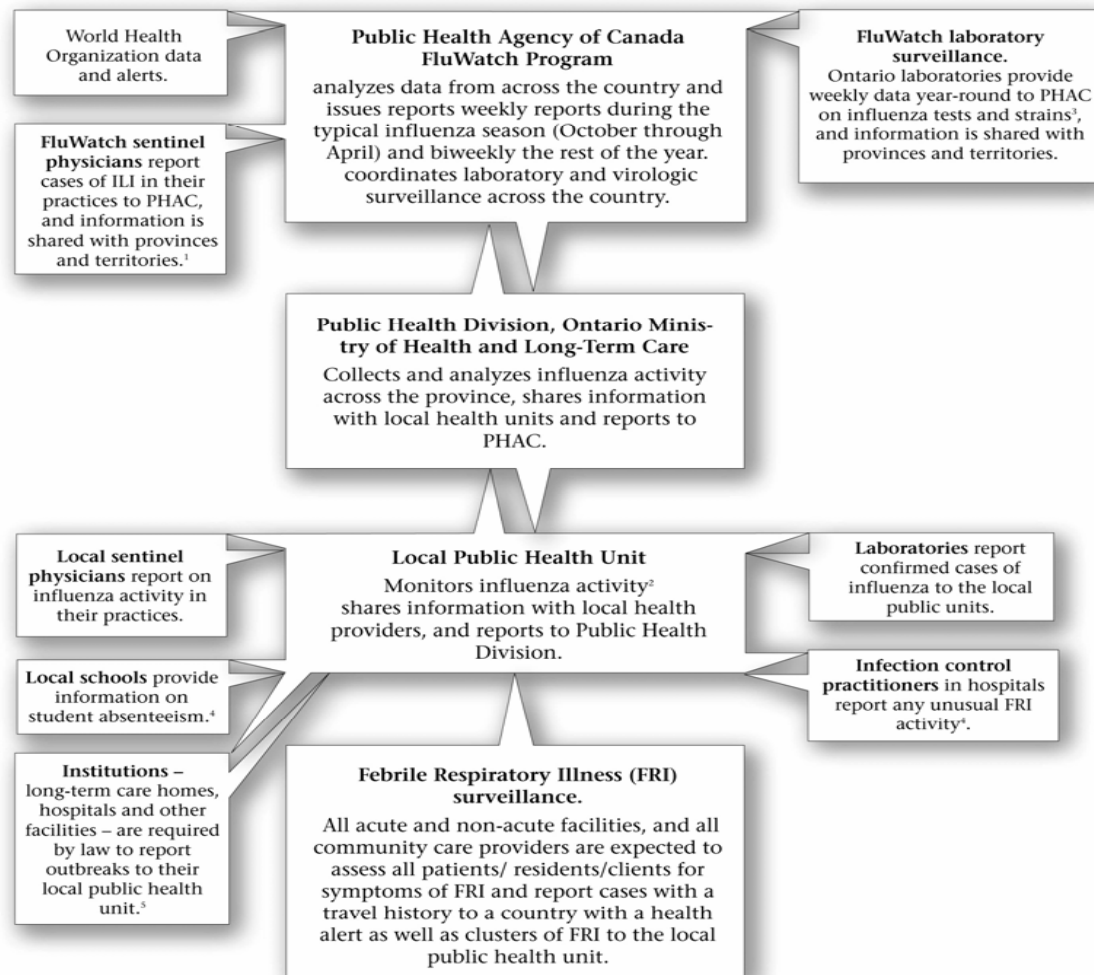
Source: 2006 Ontario Health Plan for an Influenza Pandemic, Ministry of Health and Long-Term Care

Note: The above table is based on the Meltzer model (developed at the Centers for Disease Control, Atlanta USA), which is also used by the Canadian Pandemic Influenza Plan. The model is based on the following assumptions: the numbers display a pandemic of mild to moderate severity and reflect the impact of the entire duration of the pandemic (i.e., multiple waves). The model does not include the potential impact of antiviral drugs, public health measures or an effective vaccine. As Meltzer himself notes, "The wide range of values for most of the results adds emphasis to the fact that the impact of the next influenza pandemic is largely unknown."

# Emergency Management Roles and Relationships

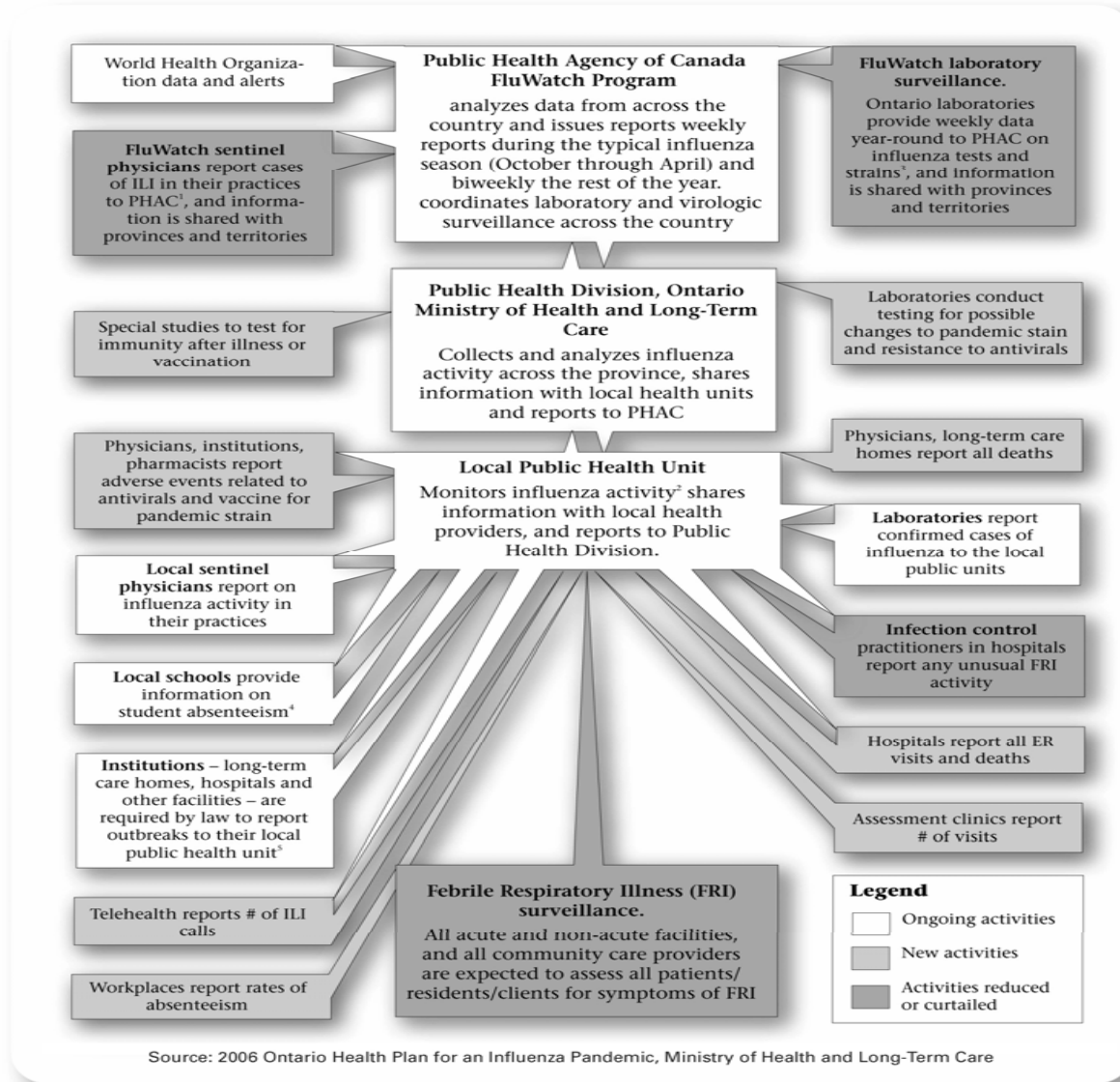


# Surveillance Activities During the Interpandemic and Pandemic Alert Periods



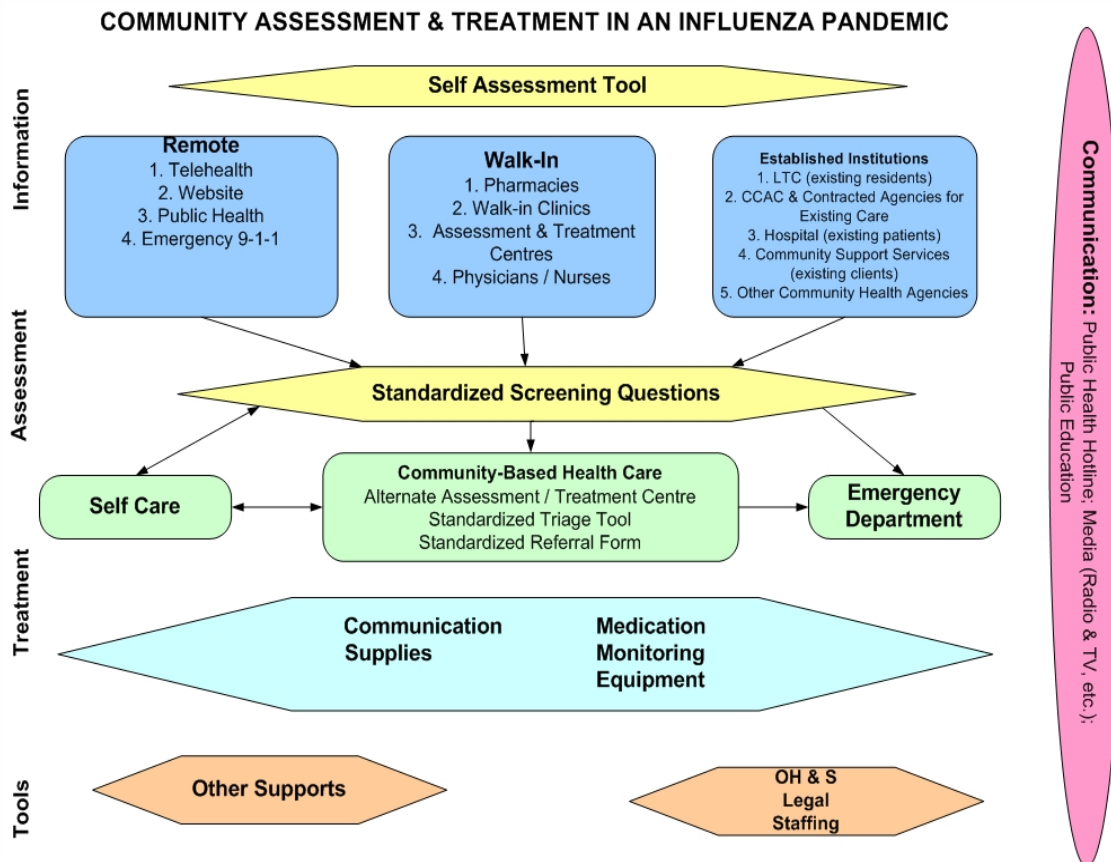
Source: 2006 Ontario Health Plan for an Influenza Pandemic, Ministry of Health and Long-Term Care

# Proposed Surveillance Activities During the Pandemic Period





# Described Role of Community-Based Influenza Assessment, Treatment and Referral Centres



Emergency Management Unit  
Influenza Pandemic Planning

# Ministry of Health and Long Term Care Communication Information Cycle in a Public Health Emergency

