

1 Consumer Price Index (CPI), All Items, 1992 = 100

| Month | CPI | Annual Rate of Inflation | |
|-------------------|-------|--------------------------|------------------------|
| Whitehorse | | | |
| Sept '06 | 126.1 | 0.4% | (Sept '05 to Sept '06) |
| August '06 | 126.7 | 1.8% | (Aug '05 to Aug '06) |
| Sept '05 | 125.6 | 3.3% | (Sept '04 to Sept '05) |
| Canada | | | |
| Sept '06 | 130.0 | 0.7% | (Sept '05 to Sept '06) |
| August '06 | 130.7 | 2.1% | (Aug '05 to Aug '06) |
| Sept '05 | 129.1 | 3.4% | (Sept '04 to Sept '05) |

Comparing September 2006 with September 2005, the **annual** rate of inflation in Whitehorse (0.4%) was 0.3 percentage points lower than the **annual** rate of inflation in Canada (0.7%). In August 2006, the rate of inflation in Whitehorse (1.8%) was also lower than the rate for Canada (2.1%). In September 2005, the rate of inflation in Whitehorse (3.3%) was also slightly lower than Canada's rate of 3.4%.

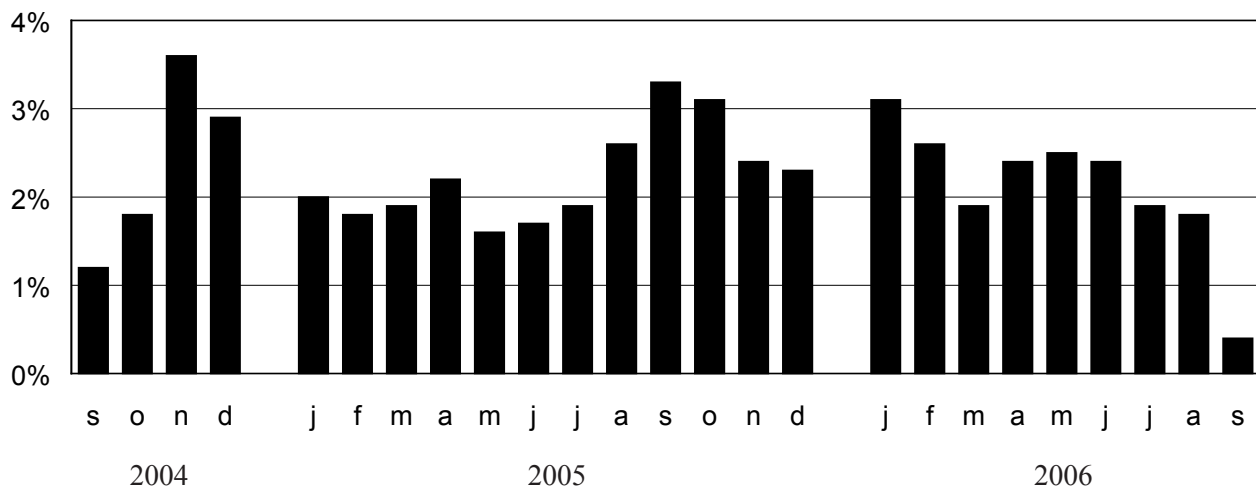
On a **monthly** basis, in Whitehorse (figures for the Yukon are not available) overall prices **decreased** 0.5% from August 2006 to September 2006. Major **monthly decreases** were seen in the following CPI commodities:

- gasoline
- fresh vegetables
- fresh fruit

Some of the major **increases** offsetting **monthly** decreases were:

- fuel oil and other fuel
- homeowners' insurance premiums
- purchase and leasing of automotive vehicles

Whitehorse's Inflation Rate

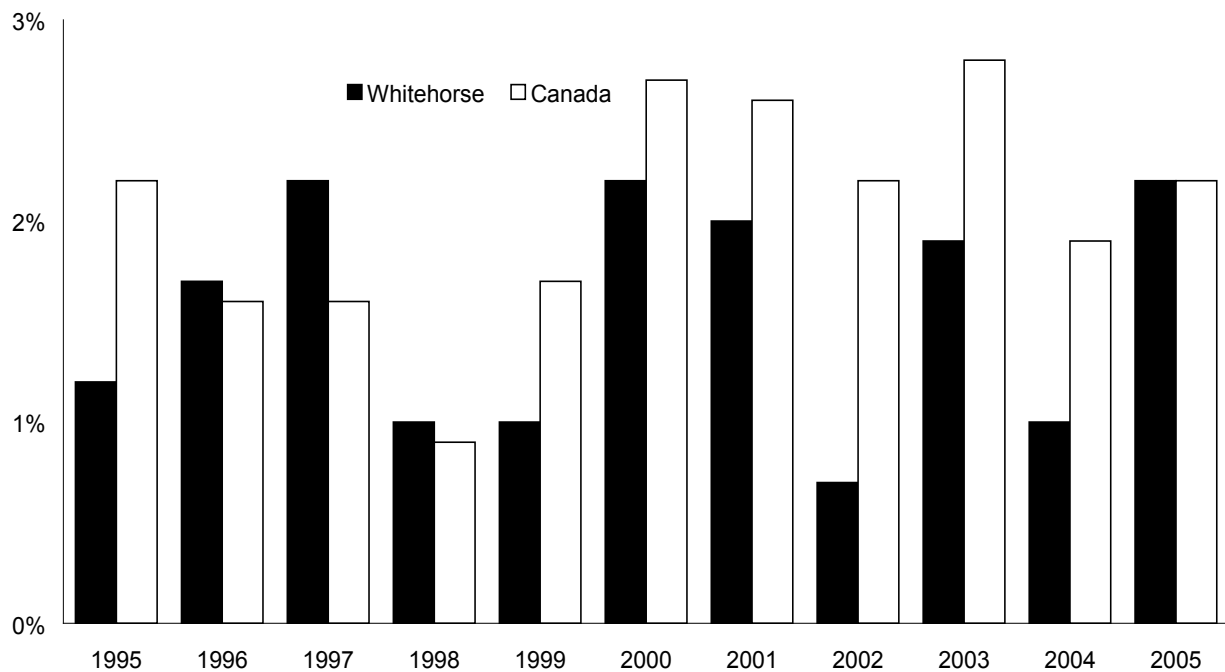


Each bar represents a month of the year, with the first letter of the month's name listed below the bar.

2 Consumer Price Index History - Annual Averages

| Whitehorse (1992 = 100) | | | Canada (1992 = 100) | | |
|-------------------------|-----------------|-----------------------------|---------------------|-----------------|-----------------------------|
| Year | All-Items Index | % Change From Previous Year | Year | All-Items Index | % Change From Previous Year |
| 2005 | 123.8 | 2.2 | 2005 | 127.3 | 2.2 |
| 2004 | 121.1 | 1.0 | 2004 | 124.6 | 1.9 |
| 2003 | 119.9 | 1.9 | 2003 | 122.3 | 2.8 |
| 2002 | 117.7 | 0.7 | 2002 | 119.0 | 2.2 |
| 2001 | 116.9 | 2.0 | 2001 | 116.4 | 2.6 |
| 2000 | 114.6 | 2.2 | 2000 | 113.5 | 2.7 |
| 1999 | 112.1 | 1.0 | 1999 | 110.5 | 1.7 |
| 1998 | 111.0 | 1.0 | 1998 | 108.6 | 0.9 |
| 1997 | 109.9 | 2.2 | 1997 | 107.6 | 1.6 |
| 1996 | 107.5 | 1.7 | 1996 | 105.9 | 1.6 |
| 1995 | 105.7 | 1.2 | 1995 | 104.2 | 2.2 |

3 The Annual Average Rate of Inflation in Whitehorse vs. Canada



4 Consumer Price Index — (All Items, 1992 =100)

| Index for Whitehorse 2004/'05 | | | | Index for Canada 2004/'05 | | | |
|-------------------------------|-------|-------|----------|---------------------------|-------|-------|----------|
| Month | 2004 | 2005 | % Change | Month | 2004 | 2005 | % Change |
| Jan. | 118.9 | 121.3 | 2.0 | Jan. | 122.9 | 125.3 | 2.0 |
| Feb. | 119.3 | 121.5 | 1.8 | Feb. | 123.2 | 125.8 | 2.1 |
| March | 119.9 | 122.2 | 1.9 | March | 123.6 | 126.5 | 2.3 |
| April | 120.2 | 122.9 | 2.2 | April | 123.9 | 126.9 | 2.4 |
| May | 121.5 | 123.4 | 1.6 | May | 125.0 | 127.0 | 1.6 |
| June | 121.8 | 123.9 | 1.7 | June | 125.1 | 127.2 | 1.7 |
| July | 121.8 | 124.1 | 1.9 | July | 125.0 | 127.5 | 2.0 |
| Aug. | 121.3 | 124.4 | 2.6 | Aug. | 124.8 | 128.0 | 2.6 |
| Sept. | 121.6 | 125.6 | 3.3 | Sept. | 124.9 | 129.1 | 3.4 |
| Oct. | 121.8 | 125.6 | 3.1 | Oct. | 125.2 | 128.5 | 2.6 |
| Nov. | 123.1 | 126.0 | 2.4 | Nov. | 125.7 | 128.2 | 2.0 |
| Dec. | 122.3 | 125.1 | 2.3 | Dec. | 125.4 | 128.1 | 2.2 |
| Year Average | 121.1 | 123.8 | 2.2 | Year Average | 124.6 | 127.3 | 2.2 |

| Index for Whitehorse 2005/'06 | | | | Index for Canada 2005/'06 | | | |
|-------------------------------|--------------|--------------|------------|---------------------------|--------------|--------------|------------|
| Month | 2005 | 2006 | % Change | Month | 2005 | 2006 | % Change |
| Jan. | 121.3 | 125.1 | 3.1 | Jan. | 125.3 | 128.8 | 2.8 |
| Feb. | 121.5 | 124.6 | 2.6 | Feb. | 125.8 | 128.6 | 2.2 |
| March | 122.2 | 124.5 | 1.9 | March | 126.5 | 129.3 | 2.2 |
| April | 122.9 | 125.8 | 2.4 | April | 126.9 | 130.0 | 2.4 |
| May | 123.4 | 126.5 | 2.5 | May | 127.0 | 130.6 | 2.8 |
| June | 123.9 | 126.9 | 2.4 | June | 127.2 | 130.4 | 2.5 |
| July | 124.1 | 126.5 | 1.9 | July | 127.5 | 130.5 | 2.4 |
| Aug. | 124.4 | 126.7 | 1.8 | Aug. | 128.0 | 130.7 | 2.1 |
| Sept. | 125.6 | 126.1 | 0.4 | Sept. | 129.1 | 130.0 | 0.7 |
| Oct. | 125.6 | - | - | Oct. | 128.5 | - | - |
| Nov. | 126.0 | - | - | Nov. | 128.2 | - | - |
| Dec. | 125.1 | - | - | Dec. | 128.1 | - | - |
| Year Average | 123.8 | - | - | Year Average | 127.3 | - | - |

5 Consumer Price Index for Whitehorse — September 2006

| | Index | | | % Change | |
|---|-------------------|----------------|-------------------|----------------------------|---------------------------|
| | September 2006 | August 2006 | September 2005 | August '06 to Sept. '06 | Sept. '05 to Sept. '06 |
| All-Items | 126.1 | 126.7 | 125.6 | -0.5 | 0.4 |
| Food | 124.0 | 125.6 | 123.9 | -1.3 | 0.1 |
| Shelter | 126.1 | 124.6 | 121.1 | 1.2 | 4.1 |
| Household Operations & Furnishings | 108.0 | 108.4 | 109.3 | -0.4 | -1.2 |
| Clothing & Footwear | 106.6 | 106.3 | 107.7 | 0.3 | -1.0 |
| Transportation | 157.5 | 160.2 | 158.7 | -1.7 | -0.8 |
| Health & Personal Care | 110.0 | 110.4 | 109.0 | -0.4 | 0.9 |
| Recreation, Education & Reading | 111.3 | 112.3 | 114.6 | -0.9 | -2.9 |
| Alcoholic Beverages & Tobacco Products | 157.5 | 157.5 | 153.1 | 0.0 | 2.9 |
| Special Aggregates | | | | | |
| Energy | 182.9 | 186.1 | 186.9 | -1.7 | -2.1 |
| All-Items excluding Energy | 121.3 | 121.6 | 120.4 | -0.2 | 0.7 |

The Consumer Price Index (CPI) is produced on a monthly basis by Statistics Canada. The data used to determine the CPI are collected by survey and the results are released in Statistics Canada publication The Consumer Price Index, catalogue no. 62-001. The Index is used to determine price change (inflation) in a given city or province over time. In order to calculate the inflation rate in an area, an index for two time periods is required. The percentage change in this index from one point in time to the next is known as the 'rate of inflation' (or 'rate of deflation' if there is a decrease).

The current official time base of the Consumer Price Index (CPI) is 1992 = 100.