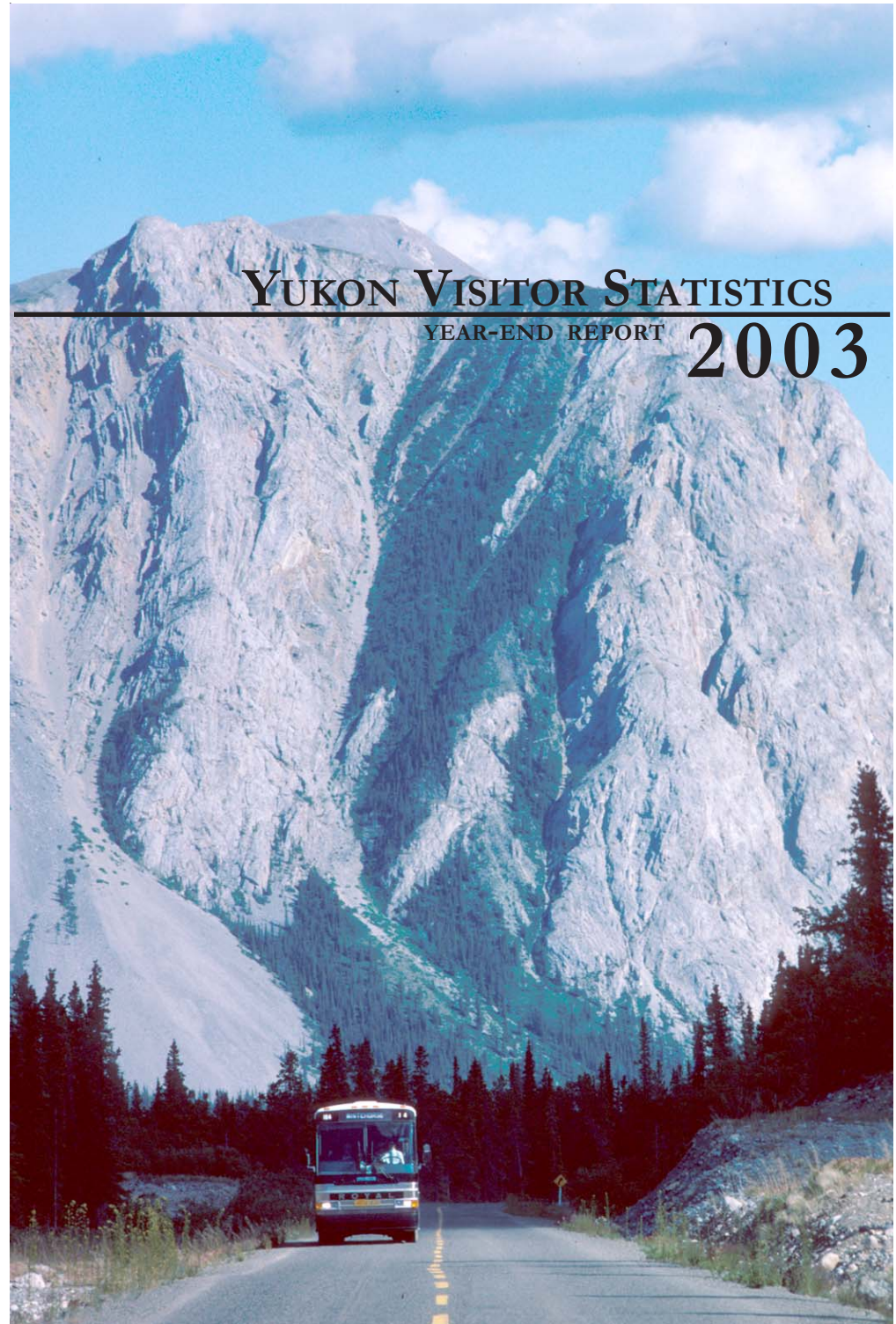


YUKON VISITOR STATISTICS

YEAR-END REPORT

2003



Yukon
Tourism and Culture

 **Yukon**
Canada's True North

OVERVIEW

THIS DOCUMENT IS INTENDED TO PROVIDE A SNAPSHOT OF THE YUKON'S 2003 TOURISM YEAR (JANUARY TO DECEMBER).

INCLUDED IS A SUMMARY OF THE YEAR, COMPARISONS TO VISITOR TRENDS IN THE REST OF CANADA AND CURRENT YUKON VISITOR STATISTICS:

YUKON BORDER CROSSING STATISTICS;

EUROPEAN AIR CHARTER STATISTICS;

YUKON VISITOR RECEPTION CENTRE STATISTICS;

YUKON BERINGIA INTERPRETIVE CENTRE STATISTICS;

YUKON RETAIL SALES;

YUKON FUEL PRICES; AND

U.S. EXCHANGE RATES.

FOR FURTHER INFORMATION ON THE 2003 YUKON VISITOR STATISTICS YEAR-END REPORT CONTACT THE DEPARTMENT OF TOURISM & CULTURE AT:

GOVERNMENT OF YUKON
DEPARTMENT OF TOURISM & CULTURE
PRODUCT DEVELOPMENT AND RESEARCH UNIT (L-1)
Box 2703
WHITEHORSE, YUKON Y1A 2C6
PHONE: (867) 667-8410
FAX: (867) 393-7005
WEBSITE: WWW.TIRC.GOV.YK.CA

CONTENTS

YEAR-END SUMMARY	2
INTERNATIONAL TRAVEL TRENDS	3
EUROPEAN AIR CHARTER STATISTICS	4
WHITEHORSE AIRPORT STATISTICS	4
TOP 10 COUNTRIES & KEY REGIONS	5
BORDER CROSSING STATISTICS - MOTORCOACH	6
BORDER CROSSING STATISTICS - TRENDS	7
ANNUAL BORDER CROSSING STATISTICS	8
VISITOR RECEPTION CENTRE STATISTICS	10
YUKON MUSEUMS VISITOR STATISTICS	11
BERINGIA INTERPRETIVE CENTRE STATISTICS	12
YUKON RETAIL SALES	12
BORDER CROSSING STATISTICS - YUKON RIVER	13
YUKON AUTO FUEL PRICES (GASOLINE)	14
U.S. EXCHANGE RATES	15
BORDER CROSSING STATISTICS - SUMMER	16

YEAR-END SUMMARY

IN 2003, A TOTAL OF 303,732 PEOPLE WERE RECORDED ENTERING INTO THE YUKON VIA THE CANADA CUSTOM'S BORDER CROSSINGS. THIS NUMBER INDICATES A 3% (9,558) DECLINE IN VISITORS TO THE YUKON FROM THE PREVIOUS YEAR. VISITORS FROM THE U.S. WERE DOWN ALMOST 5% (11,054); CANADIAN VISITORS WERE UP ALMOST 1% (401); AND OVERSEAS VISITORS WERE UP 5% (1,095). THE MAJORITY OF THE INCREASE WAS IN THE MOTORCOACH TRAFFIC MARKET WHICH WAS UP ALMOST 15% (7,256), LARGELY DUE TO AN INCREASE IN DAY TOUR ACTIVITY FROM ALASKA. PRIVATE VEHICLE TRAFFIC TO THE YUKON WAS DOWN 6% FROM 2002 (SEE PAGES 8 AND 9).

IN 2003, A SEQUENCE OF GLOBAL AND CANADIAN PHENOMENA INCLUDING SARS, THE WAR IN IRAQ, A SLOWDOWN IN THE GLOBAL ECONOMY, MAD COW DISEASE (BSE) AND FOREST FIRES IN BRITISH COLUMBIA SEVERELY IMPACTED TOURISM IN CANADA. YUKON, HOWEVER, FARED BETTER THAN CANADA AND MOST JURISDICTIONS.

THIS SUMMER ONE AIR CARRIER OPERATED DIRECT FLIGHTS BETWEEN EUROPE AND WHITEHORSE. THE NUMBER OF VISITORS ARRIVING IN WHITEHORSE DIRECTLY FROM OVERSEAS INCREASED 17% (618 PASSENGERS) OVER 2002 (SEE PAGE 4). THIS IS THE THIRD YEAR IN A ROW THAT CONDOR SAW AN INCREASE IN PASSENGER TRAFFIC TO WHITEHORSE. WHITEHORSE AIRPORT PASSENGER TRAFFIC, WHICH IS NOT INCLUDED IN BORDER CROSSING STATISTICS, WAS UP ALMOST 6% (4,292 PASSENGERS) OVER 2002 FIGURES.

THE NUMBER OF VISITORS SEEKING INFORMATION FROM YUKON VISITOR RECEPTION CENTRES DECREASED BY 1% (2,387) WHEN COMPARED WITH 2002.

INTERNATIONAL TRAVEL TRENDS

THE FOLLOWING INFORMATION ON TRENDS IN INTERNATIONAL TRAVEL TO CANADA WAS OBTAINED FROM CTC TOURISM INTELLIGENCE BULLETIN - ISSUE 20 AND STATISTICS CANADA'S INTERNATIONAL TRAVEL PUBLICATION, VOL. 19, NO. 12.

THE YEAR 2003 WAS A DEVASTATING YEAR FOR THE TRAVEL INDUSTRY. TRAVEL AND RELATED REVENUES DROPPED AGAIN IN 2003 FROM 2002. A NUMBER OF FACTORS ATTRIBUTED TO THIS INCLUDING SARS, THE WAR IN IRAQ, AIR CANADA'S FILING FOR CREDIT PROTECTION, MAD COW DISEASE (BSE), FOREST FIRES IN B.C., MASSIVE POWER OUTAGES IN EASTERN CANADA AND VOLATILITY OF THE EXCHANGE RATES. THE CONFERENCE BOARD OF CANADA ESTIMATES THESE FACTORS COST THE CANADIAN TOURISM INDUSTRY AT LEAST \$2 BILLION DOLLARS IN FOREGONE REVENUE.

TOTAL "SEASONALLY UNADJUSTED" OVERNIGHT INTERNATIONAL TOURIST TRAVEL TO CANADA WAS DOWN 5.7% IN DECEMBER 2003. FOR THE TOTAL YEAR 2003, THERE WAS A 12.9% DECLINE OVER THE SAME PERIOD IN 2002. TOTAL NUMBER OF U.S. TOURISTS WAS DOWN 5.1% IN DECEMBER 2003, FROM DECEMBER 2002. THE TOTAL NUMBER OF OVERNIGHT TRIPS BY AMERICANS TO CANADA FOR THE YEAR WAS DOWN BY 12.4% (SEASONALLY UNADJUSTED) FROM 2002.

IN DECEMBER 2003, OVERNIGHT TRAVEL TO CANADA FROM COUNTRIES OTHER THAN THE U.S. WAS DOWN 8.0% (SEASONALLY UNADJUSTED). HOWEVER, FOR 2003 THE TOTAL WAS DOWN 15.1% (SEASONALLY UNADJUSTED) FROM 2002. FOR THE YEAR OF 2003 OVERALL, OVERNIGHT TRAVEL FROM EUROPE WAS DOWN 10.8%, WITH DECLINES IN ALL MAJOR MARKETS, INCLUDING U.K. (-6%); FRANCE (-12.4%); GERMANY (-12.9%) AND THE NETHERLANDS (-4.1%), WHEN COMPARED TO 2002. THE ONLY EXCEPTION TO THIS PATTERN WAS DENMARK, WITH AN INCREASE OF 4.0%.

ASIAN OVERNIGHT TRAVEL TO CANADA IN 2003 WAS DOWN 26.6% FROM 2002. ALMOST ALL ASIAN COUNTRIES SHOWED A DECLINE IN VISITORS TO CANADA FROM 2002, INCLUDING CHINA (-21.9%), HONG KONG (-23.5%), ISRAEL (-22.5%), JAPAN (-39.5%), MALAYSIA (-57.4%), SOUTH KOREA (-35%), SINGAPORE (-24.7%) AND TAIWAN (-35.0%). THE ONLY EXCEPTION WAS INDIA WHICH SHOWED AN INCREASE OF 1.3%.

TRAVEL FROM OCEANIA FOR DECEMBER 2003 WAS DOWN 10.4% FROM DECEMBER 2002. HOWEVER, YEAR-OVER-YEAR TOURIST NUMBERS FELL 4.4%, LED BY AUSTRALIA (-3.8%) AND NEW ZEALAND (-6.3%).

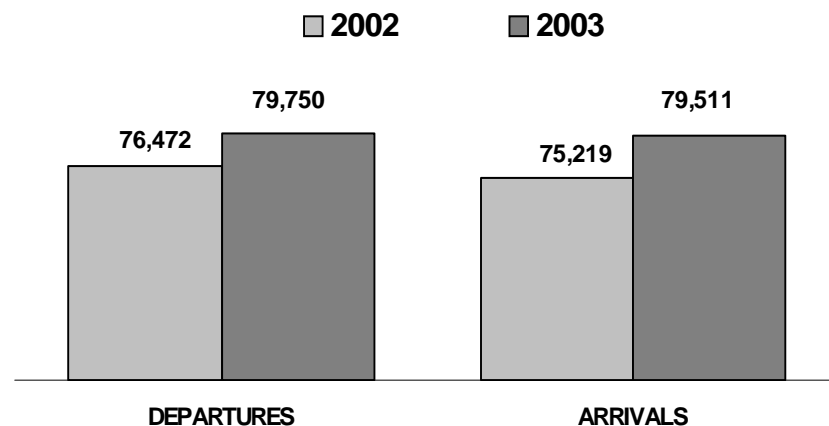
EUROPEAN AIR CHARTER STATISTICS

2002	MAY	JUN	JUL	AUG	SEP	TOTALS
Flights	3	8	9	9	8	37
Passengers	325	739	939	1,222	476	3,701
2003	MAY	JUN	JUL	AUG	SEP	TOTALS
Flights	3	8	10	8	8	37
Passengers	375	803	1,269	1,386	486	4,319
+/- % CHANGE	MAY	JUN	JUL	AUG	SEP	TOTALS
Flights	0	0	1	-1	0	0
% CHANGE	0.0%	0.0%	11.1%	-11.1%	0.0%	0.0%
Passengers	50	64	330	164	10	618
% CHANGE	15.4%	8.7%	35.1%	13.4%	2.1%	16.7%

SOURCE: CANADA BORDER SERVICE AGENCY

TOTALS INCLUDE VISITORS ARRIVING IN WHITEHORSE DIRECT FROM EUROPE, TOTALS DO NOT INCLUDE CANADIAN RESIDENTS OR GERMAN FLIGHT CREW.

WHITEHORSE AIRPORT PASSENGER TRAFFIC
 JANUARY - DECEMBER



SOURCE: WHITEHORSE AIRPORT - HIGHWAYS & PUBLIC WORKS (YTG)

TOTALS INCLUDE ALL PASSENGERS ARRIVING IN WHITEHORSE ON COMMERCIAL FLIGHTS (JAN. TO DEC.).

YUKON BORDER CROSSING STATISTICS
 TOP 10 COUNTRIES

	2002	2003	+/-	% change
United States	229,000	217,946	-11,054	-5%
Canada	62,053	62,454	401	1%
Germany	7,457	7,776	319	4%
United Kingdom	3,720	3,977	257	7%
Switzerland	2,213	2,601	388	18%
Australia	2,128	2,261	133	6%
Netherlands	1,355	1,237	-118	-9%
France	592	703	111	19%
Austria	473	544	71	15%
New Zealand	423	483	60	14%

SOURCE: CANADA BORDER SERVICE AGENCY AND YUKON BUREAU OF STATISTICS

PASSENGER TOTALS DO NOT INCLUDE TRAIN VISITORS, THOSE IN COMMERCIAL VEHICLES, VISITORS ARRIVING BY AIR, OR MARINE ARRIVALS (DAWSON CITY).

THE CANADA CATEGORY INCLUDES YUKON RESIDENTS.

YUKON BORDER CROSSING STATISTICS
 KEY REGIONS

	2002	2003	+ / -	% Change
North America	291,053	280,400	-10,653	-4%
Europe	17,456	18,571	1,115	6%
Asia / Pacific	3,875	3,750	-125	-3%
Other	906	1,011	105	12%
Total	313,290	303,732	-9,558	-3%

SOURCE: CANADA BORDER SERVICE AGENCY AND YUKON BUREAU OF STATISTICS

PASSENGER TOTALS DO NOT INCLUDE TRAIN VISITORS, THOSE IN COMMERCIAL VEHICLES, VISITORS ARRIVING BY AIR, OR MARINE ARRIVALS (DAWSON CITY).

THE NORTH AMERICA CATEGORY INCLUDES YUKON RESIDENTS.

YUKON BORDER CROSSING STATISTICS - MOTORCOACH

MAY	2002	2003	+ / -	% Change
Beaver Creek	304	207	-97	-31.9%
Fraser	3,981	3,554	-427	-10.7%
Little Gold	143	86	-57	-39.9%
Pleasant	1	62	61	6100.0%
Total	4,429	3,909	-520	-11.7%

JUNE	2002	2003	+ / -	% Change
Beaver Creek	1,403	2,036	633	45.1%
Fraser	10,739	11,643	904	8.4%
Little Gold	329	95	-234	-71.1%
Pleasant	0	124	124	#DIV/0!
Total	12,471	13,898	1,427	11.4%

JULY	2002	2003	+ / -	% Change
Beaver Creek	1,783	1,808	25	1.4%
Fraser	11,955	12,036	81	0.7%
Little Gold	463	296	-167	-36.1%
Pleasant	224	148	-76	-33.9%
Total	14,425	14,288	-137	-0.9%

AUGUST	2002	2003	+ / -	% Change
Beaver Creek	1,542	1,774	232	15.0%
Fraser	10,647	14,009	3,362	31.6%
Little Gold	348	182	-166	-47.7%
Pleasant	67	71	4	6.0%
Total	12,604	16,036	3,432	27.2%

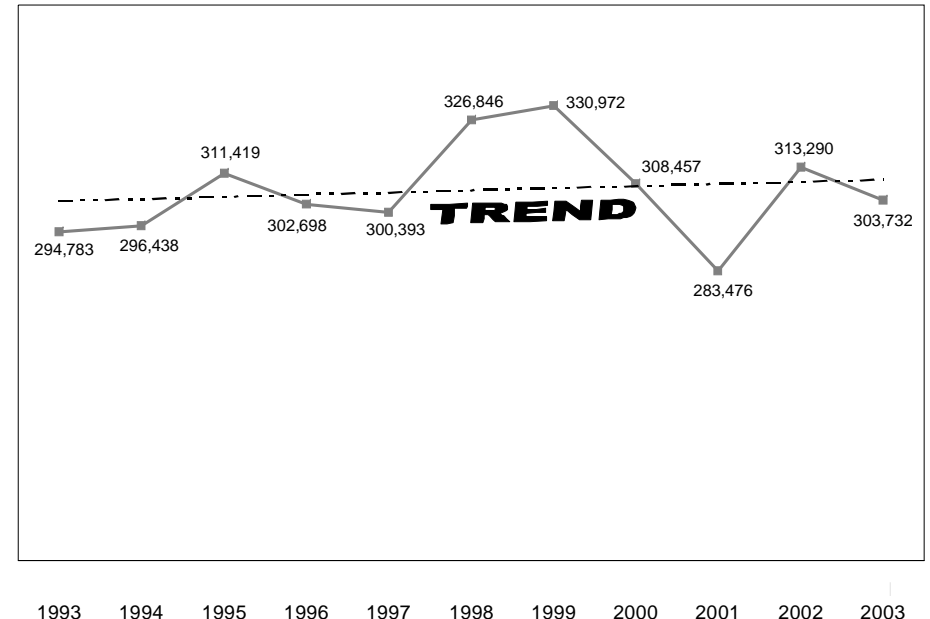
SEPT	2002	2003	+ / -	% Change
Beaver Creek	554	607	53	9.6%
Fraser	4,700	7,668	2,968	63.1%
Little Gold	94	62	-32	-34.0%
Pleasant	2	10	8	400.0%
Total	5,350	8,347	2,997	56.0%

TOTAL	2002	2003	+ / -	% Change
Beaver Creek	5,586	6,432	846	15.1%
Fraser	42,022	48,910	6,888	16.4%
Little Gold	1,377	721	-656	-47.6%
Pleasant	294	415	121	41.2%
Total	49,279	56,478	7,199	14.6%

SOURCE: CANADA BORDER SERVICE AGENCY AND YUKON BUREAU OF STATISTICS

TOTALS INCLUDE YUKON RESIDENTS.

YUKON BORDER CROSSING STATISTICS -TRENDS



SOURCE: CANADA BORDER SERVICE AGENCY AND YUKON BUREAU OF STATISTICS

PASSENGER TOTALS DO NOT INCLUDE TRAIN VISITORS, THOSE IN COMMERCIAL VEHICLES, VISITORS ARRIVING BY AIR, OR MARINE ARRIVALS (DAWSON CITY).

FIGURES INCLUDE YUKON RESIDENTS.

THE ANNUAL NUMBER OF BORDER CROSSINGS MADE BY VISITORS INTO THE YUKON FLUCTUATES EACH YEAR. THE TOTAL NUMBER OF VISITORS HAS DECLINED SINCE REACHING A PEAK IN THE ANNIVERSARY YEARS OF 1998 AND 1999. HOWEVER, BETWEEN 1993 AND 2002 THE TREND IN ANNUAL VISITORS HAS BEEN POSITIVE. THE NUMBER OF BORDER CROSSINGS IN 2002 WAS THE THIRD HIGHEST ON RECORD SINCE 1990.

ANNUAL YUKON BORDER CROSSING STATISTICS - 2002 / 2003

2002	JAN	FEB	MAR	APR	MAY	JUN	JUL	AUG	SEP	OCT	NOV	DEC	TOTALS
Private Vehicle	4,523	4,096	7,206	8,735	18,949	46,081	63,418	58,707	29,467	12,033	5,788	4,741	263,744
Motorcoach	21	59	61	41	4,429	12,471	14,425	12,604	5,350	30	23	32	49,546
TOTALS	4,544	4,155	7,267	8,776	23,378	58,552	77,843	71,311	34,817	12,063	5,811	4,773	313,290
US	3,739	3,303	5,314	6,153	15,992	41,427	57,506	52,423	25,544	8,839	4,746	4,014	229,000
Yukon	-	-	-	-	-	4,927	4,631	5,653	3,543	2,640	915	576	22,885
Canada	774	802	1,898	2,534	5,842	7,459	9,729	7,098	2,369	414	104	145	39,168
Others	31	50	55	89	1,544	4,739	5,977	6,137	3,361	170	46	38	22,237

2003	JAN	FEB	MAR	APR	MAY	JUN	JUL	AUG	SEP	OCT	NOV	DEC	TOTALS
Private Vehicle	4,316	5,071	6,511	9,529	18,322	41,597	60,162	54,659	26,472	10,664	5,260	4,367	246,930
Motorcoach	2	99	80	12	3,909	13,898	14,288	16,036	8,347	36	77	18	56,802
TOTALS	4,318	5,170	6,591	9,541	22,231	55,495	74,450	70,695	34,819	10,700	5,337	4,385	303,732
US	3,444	4,122	4,992	6,196	15,319	38,714	53,158	50,446	25,646	7,882	4,297	3,730	217,946
Yukon	757	849	1,379	2,927	4,222	5,372	5,446	5,842	3,025	2,256	879	540	33,494
Canada	86	135	164	317	1,179	6,567	9,867	7,489	2,551	410	117	78	28,960
Others	31	64	56	101	1,511	4,842	5,979	6,918	3,597	152	44	37	23,332

+/- % CHANGE	JAN	FEB	MAR	APR	MAY	JUN	JUL	AUG	SEP	OCT	NOV	DEC	TOTALS
Private Vehicle	-207	975	-695	794	-627	-4,484	-3,256	-4,048	-2,995	-1,369	-528	-374	-16,814
% CHANGE	-4.6%	23.8%	-9.6%	9.1%	-3.3%	-9.7%	-5.1%	-6.9%	-10.2%	-11.4%	-9.1%	-7.9%	-6.4%
Motorcoach	-19	40	19	-29	-520	1,427	-137	3,432	2,997	6	54	-14	7,256
% CHANGE	-90.5%	67.8%	31.1%	-70.7%	-11.7%	11.4%	-0.9%	27.2%	56.0%	20.0%	234.8%	-43.8%	14.6%
TOTALS	-226	1,015	-676	765	-1,147	-3,057	-3,393	-616	2	-1,363	-474	-388	-9,558
% CHANGE	-5.0%	24.4%	-9.3%	8.7%	-4.9%	-5.2%	-4.4%	-0.9%	0.0%	-11.3%	-8.2%	-8.1%	-3.1%
US	-295	819	-322	43	-673	-2,713	-4,348	-1,977	102	-957	-449	-284	-11,054
% CHANGE	-7.9%	24.8%	-6.1%	0.7%	-4.2%	-6.5%	-7.6%	-3.8%	0.4%	-10.8%	-9.5%	-7.1%	-4.8%
Yukoners	757	849	1,379	2,927	4,222	445	815	189	-518	-384	-36	-36	10,609
% CHANGE	-	-	-	-	-	9.0%	17.6%	3.3%	-14.6%	-14.5%	-3.9%	-6.3%	46.4%
Canada	-688	-667	-1,734	-2,217	-4,663	-892	138	391	182	-4	13	-67	-10,208
% CHANGE	-88.9%	-83.2%	-91.4%	-87.5%	-79.8%	-12.0%	1.4%	5.5%	7.7%	-1.0%	12.5%	-46.2%	-26.1%
Others	0	14	1	12	-33	103	2	781	236	-18	-2	-1	1,095
% CHANGE	0.0%	28.0%	1.8%	13.5%	-2.1%	2.2%	0.0%	12.7%	7.0%	-10.6%	-4.3%	-2.6%	4.9%

SOURCE: CANADA CUSTOMS AND REVENUE AGENCY AND YUKON BUREAU OF STATISTICS

PASSENGER TOTALS DO NOT INCLUDE TRAIN VISITORS, THOSE IN COMMERCIAL VEHICLES, VISITORS ARRIVING BY AIR, OR MARINE ARRIVALS (DAWSON CITY).

YUKON TRAVELLERS ARE INCLUDED IN THE CANADA CATEGORY FROM JANUARY TO MAY, 2002.

VISITOR RECEPTION CENTRE STATISTICS

VRC STATISTICS BY COUNTRY OF ORIGIN - CANADA				
VRC	2002	2003	+ / -	% Change
BEAVER CREEK	2,214	2,316	102	5%
CARCROSS	15,486	17,978	2,492	16%
DAWSON CITY	10,223	10,437	214	2%
HAINES JCT.	3,370	4,309	939	28%
WATSON LAKE	11,161	10,471	-690	-6%
WHITEHORSE	21,692	22,570	878	4%
TOTALS	64,146	68,081	3,935	6%

VRC STATISTICS BY COUNTRY OF ORIGIN - U.S.A.				
VRC	2002	2003	+ / -	% Change
BEAVER CREEK	6,411	6,038	-373	-6%
CARCROSS	40,577	40,964	387	1%
DAWSON CITY	12,307	12,653	346	3%
HAINES JCT.	7,469	8,604	1,135	15%
WATSON LAKE	16,765	13,472	-3,293	-20%
WHITEHORSE	33,196	25,576	-7,620	-23%
TOTALS	116,725	107,307	-9,418	-8%

VRC STATISTICS BY COUNTRY OF ORIGIN - OTHER				
VRC	2002	2003	+ / -	% Change
BEAVER CREEK	3,894	3,944	50	1%
CARCROSS	10,362	10,147	-215	-2%
DAWSON CITY	5,528	6,620	1,092	20%
HAINES JCT.	2,083	3,140	1,057	51%
WATSON LAKE	3,948	4,688	740	19%
WHITEHORSE	11,581	11,953	372	3%
TOTALS	37,396	40,492	3,096	8%

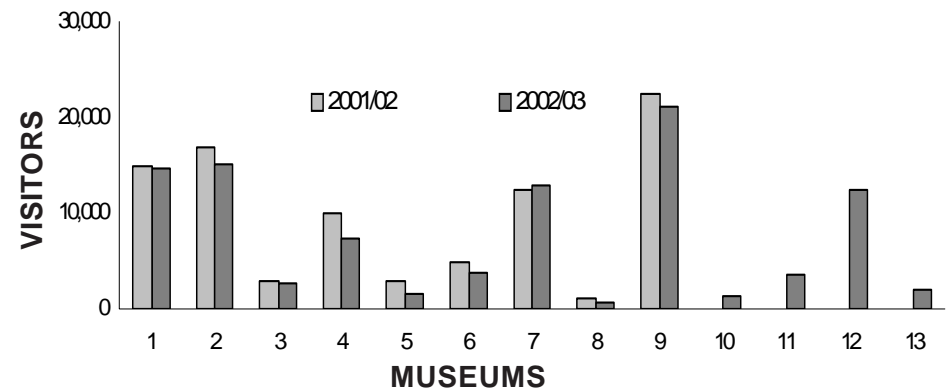
VRC STATISTICS - ALL VISITORS				
VRC	2002	2003	+ / -	% Change
BEAVER CREEK	12,519	12,298	-221	-2%
CARCROSS	66,425	69,089	2,664	4%
DAWSON CITY	28,058	29,710	1,652	6%
HAINES JCT.	12,922	16,053	3,131	24%
WATSON LAKE	31,874	28,631	-3,243	-10%
WHITEHORSE	66,469	60,099	-6,370	-10%
TOTALS	218,267	215,880	-2,387	-1%

VISITOR RECEPTION CENTRE STATISTICS ARE COMPILED FROM VOLUNTARY VISITOR SIGN-IN SHEETS AND ARE AN INDICATION OF RECEPTION CENTRE VISITATION TRENDS ONLY. THEY ARE NOT INTENDED TO BE AN ACCURATE RECORD OF ALL VISITATION TO THE YUKON. THE WHITEHORSE VISITOR RECEPTION CENTRE IS OPEN YEAR ROUND, VRC STATISTICS ARE ONLY REPORTED FOR THE PERIOD FROM MAY 1ST TO SEPTEMBER 30TH.

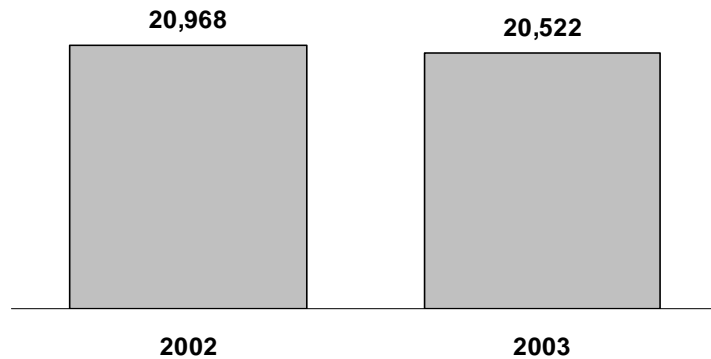
YUKON MUSEUM VISITOR STATISTICS

	MUSEUM	2001 / 02	2002 / 03	+/-
1	MacBride Museum	15,000	14,753	-247
2	Dawson City Museum	16,919	15,170	-1,749
3	Old Log Church	2,822	2,660	-162
4	Kluane Museum/ Natural History	9,897	7,236	-2,661
5	Keno City Mining Museum	3,000	1,500	-1,500
6	George Johnston Museum	5,000	3,701	-1,299
7	Yukon Transportation Museum	12,517	12,915	398
8	YHMA Walking Tour	1,026	768	-258
9	Beringia Centre	22,554	21,174	-1,380
10	Binet House	0	1,351	
11	Campbell Region Interp. Ctr.	0	3,500	
12	Northern Lights Space & Sc. Ctr.	0	12,500	
13	Miles Canyon Railway	0	2,000	
	TOTAL	88,735	99,228	-8,858

YUKON MUSEUM VISITOR STATISTICS
 (April 1st to March 31st)

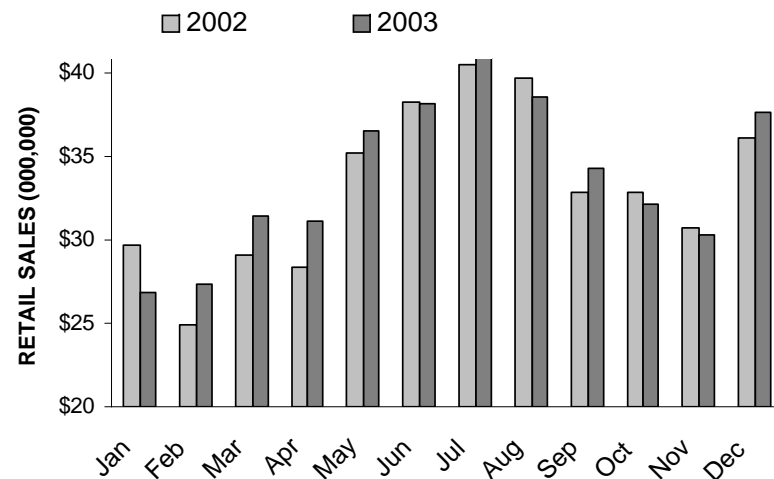


BERINGIA INTERPRETIVE CENTRE STATISTICS



THE NUMBER OF VISITORS TO THE BERINGIA INTERPRETIVE CENTRE DECREASED SLIGHTLY FROM 20,968 (JAN. TO DEC.) IN 2002 TO 20,522 (JAN. TO DEC.) IN 2003, A DECREASE OF 2% OR 446.

YUKON RETAIL SALES



SOURCE: YUKON BUREAU OF STATISTICS

RETAIL SALES IN THE YUKON INCREASED FROM \$398.2 MILLION (JAN. TO DEC.) IN 2002 TO \$405.0 MILLION (JAN. TO DEC.) IN 2003, AN INCREASE OF 1.7% OR \$6.8 MILLION.

BORDER CROSSING STATISTICS-YUKON RIVER-DAWSON

2002	MAY	JUN	JUL	AUG	SEP	TOTALS
Boat Trips	8	29	37	28	11	113
TOTALS	267	1,766	1,962	1,848	559	6,402
US Citizens	209	1,472	1,793	1,613	426	5,513
Canadian Citizens	27	186	133	155	89	590
Others	31	108	36	80	44	299

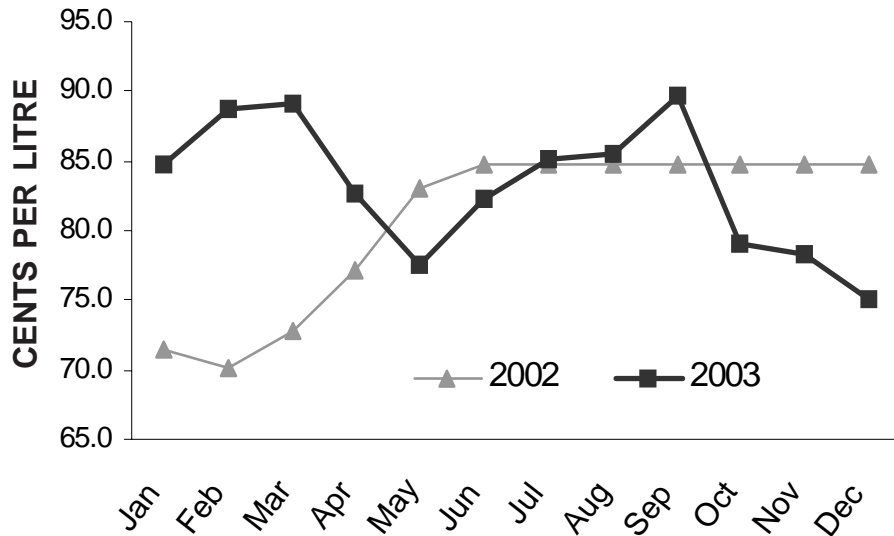
2003	MAY	JUN	JUL	AUG	SEP	TOTALS
Boat Trips	10	30	32	31	11	114
TOTALS	472	1,988	2,006	2,197	378	7,041
US Citizens	323	1,672	1,765	1,896	311	5,967
Canadian Citizens	29	193	159	211	52	644
Others	120	123	82	90	15	430

+/- % CHANGE	MAY	JUN	JUL	AUG	SEP	TOTALS
Boat Trips	2	1	-5	3	0	1
% CHANGE	25.0%	3.4%	-13.5%	10.7%	0.0%	0.9%
TOTALS	205	222	44	349	-181	639
% CHANGE	76.8%	12.6%	2.2%	18.9%	-32.4%	10.0%
US Citizens	114	200	-28	283	-115	454
% CHANGE	54.5%	13.6%	-1.6%	17.5%	-27.0%	8.2%
Canadian Citizens	2	7	26	56	-37	54
% CHANGE	7.4%	3.8%	19.5%	36.1%	-41.6%	9.2%
Others	89	15	46	10	-29	131
% CHANGE	287.1%	13.9%	127.8%	12.5%	-65.9%	43.8%

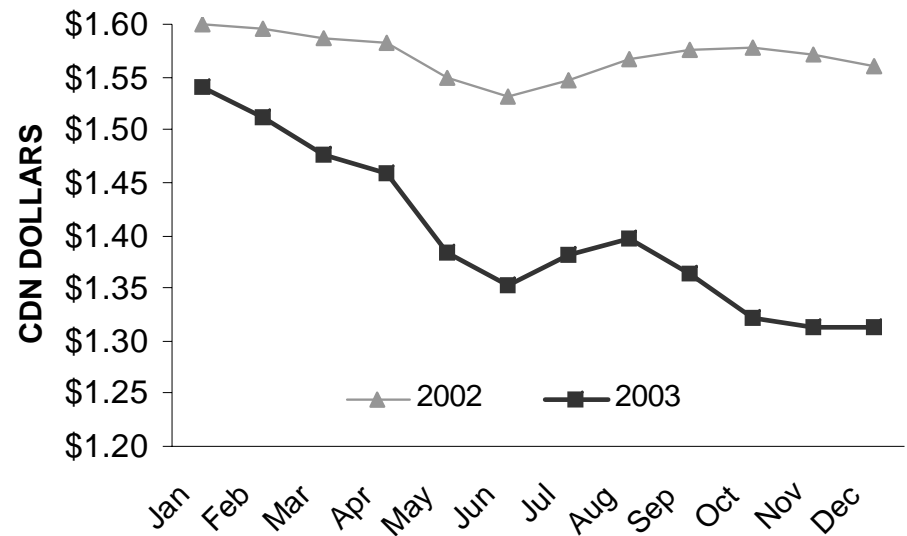
SOURCE: CANADA BORDER SERVICE AGENCY AND YUKON BUREAU OF STATISTICS

MARINE ARRIVALS IN DAWSON CITY INCLUDE VISITORS ARRIVING ON THE YUKON QUEEN FROM EAGLE, ALASKA.

AVERAGE YUKON AUTO FUEL PRICES



AVERAGE U.S. EXCHANGE RATES



AVERAGE AUTO FUEL PRICES			
MONTH	2002 AVERAGE	2003 AVERAGE	AVERAGE CHANGE
JANUARY	71.4	84.8	13.4
FEBRUARY	70.2	88.7	18.5
MARCH	72.8	89.1	16.3
APRIL	77.2	82.7	5.5
MAY	83.1	77.5	-5.6
JUNE	84.7	82.3	-2.4
JULY	84.7	85.1	0.4
AUGUST	84.7	85.6	0.9
SEPTEMBER	84.7	89.7	5.0
OCTOBER	84.7	79.1	-5.6
NOVEMBER	84.7	78.2	-6.5
DECEMBER	84.7	75.1	-9.7

SOURCE: YUKON BUREAU OF STATISTICS

AUTO FUEL PRICES ARE THE AVERAGE PRICE PER LITRE OF REGULAR SELF-SERVE FUEL IN WHITEHORSE.

AVERAGE U.S. EXCHANGE RATES			
MONTH	2002	2003	+ / -
JANUARY	1.6002	1.5410	-0.0592
FEBRUARY	1.5958	1.5124	-0.0834
MARCH	1.5870	1.4759	-0.1111
APRIL	1.5813	1.4585	-0.1228
MAY	1.5496	1.3845	-0.1651
JUNE	1.5316	1.3523	-0.1793
JULY	1.5459	1.3815	-0.1644
AUGUST	1.5679	1.3957	-0.1722
SEPTEMBER	1.5758	1.3632	-0.2126
OCTOBER	1.5778	1.3218	-0.2560
NOVEMBER	1.5714	1.3126	-0.2588
DECEMBER	1.5593	1.3128	-0.2465

SOURCE: BANK OF CANADA

EXCHANGE RATES ARE THE AVERAGE FOR EACH MONTH.

YUKON VISITOR STATISTICS

2003 YEAR-END REPORT

YUKON BORDER CROSSING STATISTICS - SUMMER

2002	MAY	JUN	JUL	AUG	SEP	TOTALS
Private Vehicle (all)	18,949	46,081	63,418	58,707	29,467	216,622
Motorcoach	4,429	12,471	14,425	12,604	5,350	49,279
TOTALS	23,378	58,552	77,843	71,311	34,817	265,901
US Citizens	15,992	41,427	57,506	52,423	25,544	192,892
Canadian Citizens	5,842	12,386	14,360	12,751	5,912	51,251
Others	1,544	4,739	5,977	6,137	3,361	21,758

2003	MAY	JUN	JUL	AUG	SEP	TOTALS
Private Vehicle (all)	18,322	41,597	60,162	54,659	26,472	201,212
Motorcoach	3,909	13,898	14,288	16,036	8,347	56,478
TOTALS	22,231	55,495	74,450	70,695	34,819	257,690
US Citizens	15,319	38,714	53,158	50,446	25,646	183,283
Canadian Citizens	5,401	11,939	15,313	13,331	5,576	51,560
Others	1,511	4,842	5,979	6,918	3,597	22,847

+/- % CHANGE	MAY	JUN	JUL	AUG	SEP	TOTALS
Private Vehicle (all)	-627	-4,484	-3,256	-4,048	-2,995	-15,410
% CHANGE	-3.3%	-9.7%	-5.1%	-6.9%	-10.2%	-7.1%
Motorcoach	-520	1,427	-137	3,432	2,997	7,199
% CHANGE	-11.7%	11.4%	-0.9%	27.0%	56.0%	14.6%
TOTALS	-1,147	-3,057	-3,393	-616	2	-8,211
% CHANGE	-4.9%	-5.2%	-4.4%	-0.9%	0.0%	-3.1%
US Citizens	-673	-2,713	-4,348	-1,977	102	-9,609
% CHANGE	-4.2%	-6.5%	-7.6%	-3.8%	0.4%	-5.0%
Canadian Citizens	-441	-447	953	580	-336	309
% CHANGE	-7.5%	-3.6%	6.6%	4.5%	-5.7%	0.6%
Others	-33	103	2	781	236	1,089
% CHANGE	-2.1%	2.2%	0.0%	12.7%	7.0%	5.0%

SOURCE: CANADA BORDER SERVICE AGENCY AND YUKON BUREAU OF STATISTICS

PASSENGER TOTALS DO NOT INCLUDE TRAIN VISITORS, THOSE IN COMMERCIAL VEHICLES, VISITORS ARRIVING BY AIR, OR MARINE ARRIVALS (DAWSON CITY).

THE CANADIAN CITIZENS CATEGORY INCLUDES YUKON RESIDENTS.