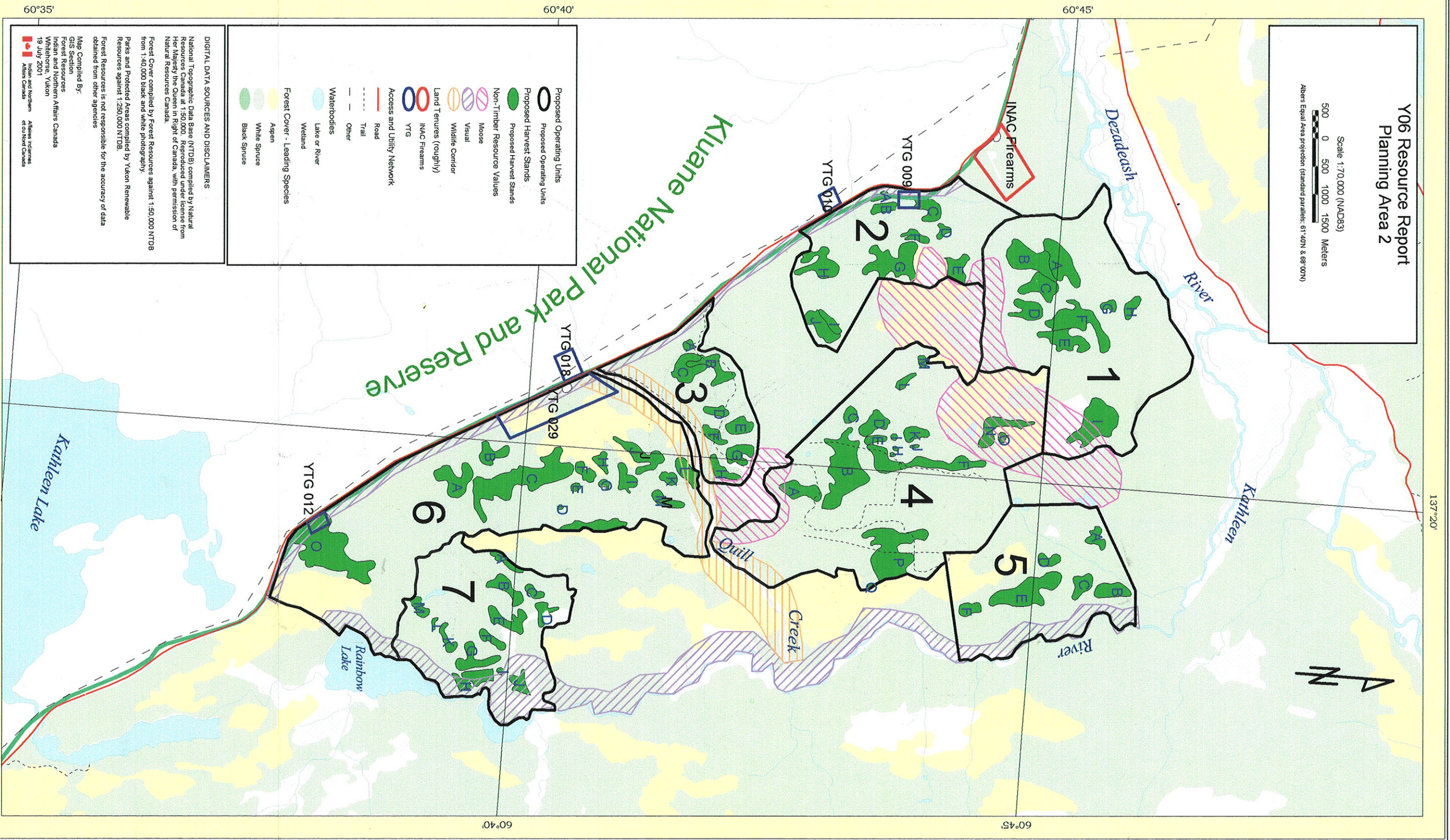
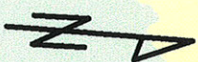


Y06 Resource Report Planning Area 2

Scale 1:70,000 (NAD83)
 500 0 500 1000 1500 Meters
 Albers Equal Area projection (standard parallels: 61°40'N & 69°00'N)



Proposed Operating Units

- Proposed Operating Units (black outline)
- Proposed Harvest Stands (green)
- Proposed Harvest Stands (green)

Non-Timber Resource Values

- Visual (pink hatched)
- Moose (purple hatched)
- Wildlife Corridor (orange hatched)

Land Tenures (roughly)

- INAC Firearms (red outline)
- YTG (blue outline)

Access and Utility Network

- Road (red line)
- Trail (black dashed line)
- Other (black dashed line)

Waterbodies

- Lake or River (light blue)
- Wetland (light green)

Forest Cover - Leading Species

- Aspen (light green)
- White Spruce (yellow)
- Black Spruce (dark green)

DIGITAL DATA SOURCES AND DISCLAIMERS

National Topographic Data Base (NTDB) compiled by Natural Resources Canada at 1:50,000. Reproduced under license from Her Majesty the Queen in Right of Canada, with permission of Natural Resources Canada.

Forest Cover compiled by Forest Resources against 1:50,000 NTDB from 1:40,000 black and white photography.

Parks and Protected Areas compiled by Yukon Renewable Resources against 1:250,000 NTDB.

Forest Resources is not responsible for the accuracy of data obtained from other agencies.

Map Compiled By:
 GIS Section
 Forest Resources
 Indian and Northern Affairs Canada
 Whitehorse, Yukon
 19 July 2001