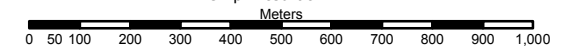


# Yukon Forest Management Branch Operations Map

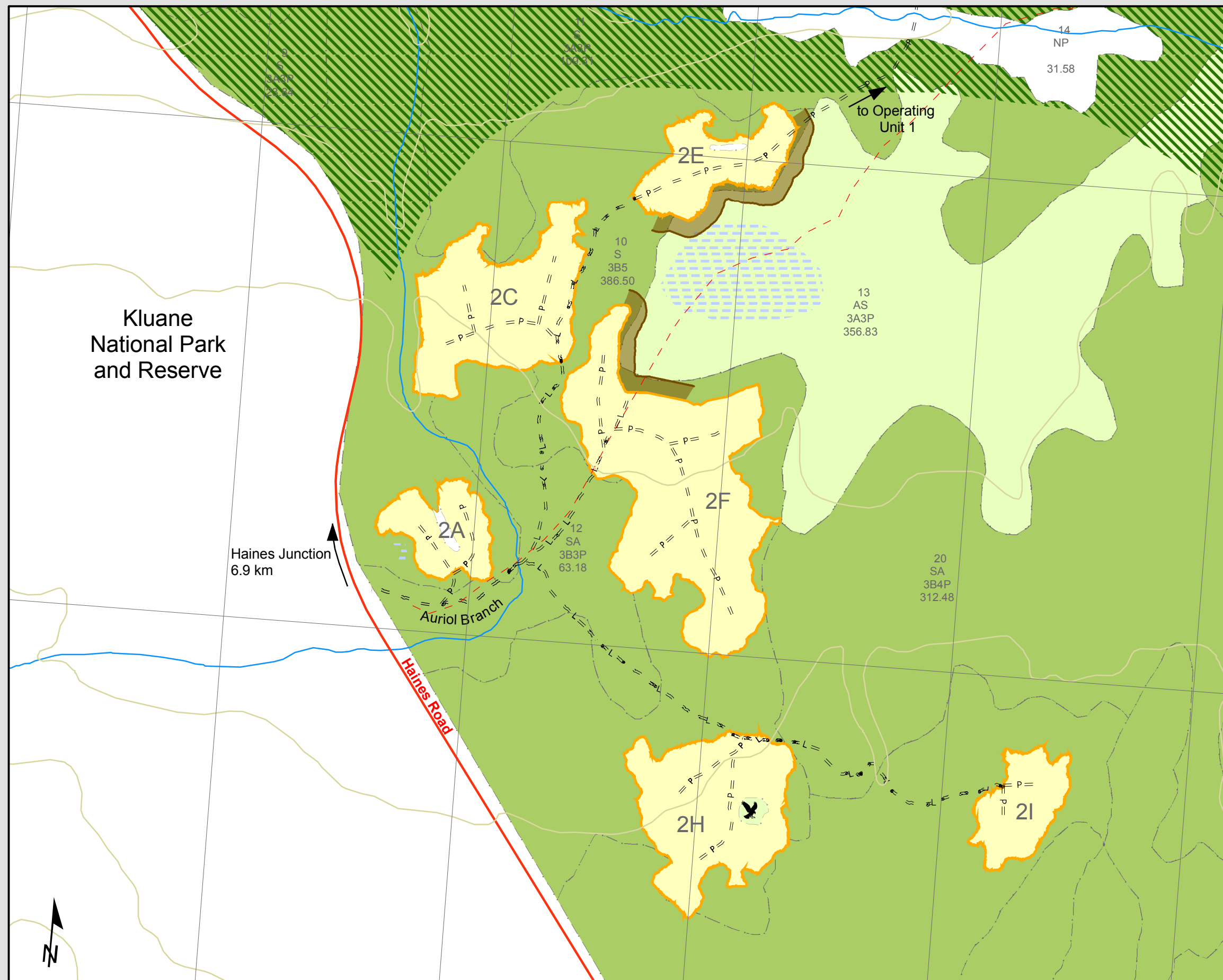
## Quill Creek Bench HPA Operating Unit #2 - Overview

August 2005

1:15 000 scale  
when printed at 11" x 17"



Yukon Albers Equal Area Projection (NAD 83)



### Legend

- Located Blocks
- Proposed Blocks
- Wildlife Corridor
- Riparian Reserve
- FN Settlement Lands
- Private Lot
- Non Productive (NP) Forest
- Trembling Aspen
- White Spruce
- Waterbodies
- Wetlands
- Dry River Bed
- Gravel Pit
- Nest
- Highway
- Existing Trail
- Existing 2WD Road
- L = Located 2WD Road
- P = Proposed 2WD Road
- Watercourse
- Contour
- Topographic Features

### Forest Cover Codes

Species Code — 19 — Stand Number  
 Species Code — SA — Height, crown closure, age and site class code  
 Area in hectares — 114.99

Species Codes	Height Class	Crown Closure	Age Class	Site Class
SW: White Spruce	1: 0-4 m	A: 1-15%	1: 1-2 yrs	L: <10 m
SB: Black Spruce	2: 5-9 m	B: 16-25%	2: 21-40 yrs	P: 10-14 m
P: Lodgepole Pine	3: 10-13 m	C: 26-30%	3: 41-60 yrs	M: 15-19 m
L: Larch	4: 14-16 m	D: 31-35%	4: 61-80 yrs	G: 20+ m
A: Aspen	5: 17-19 m	E: 36-45%	5: 81-100 yrs	
B: Balsam Poplar	6: 20-24 m	F: 46-55%	6: 101-120 yrs	
W: White Birch	7: 25-30 m	G: 56-75%	7: 121-150 yrs	
F: Alpine Fir	8: 31-35 m	H: 76-100%	8: 151-180 yrs	
			9: 181+ yrs	

### Data Sources and Disclaimers:

National Topographic Data Base (NTDB) base data compiled by Government of Canada, Natural Resources Canada (NRCan), at 1:50 000 scale.

Harvest blocks and branch roads determined by field Global Positioning System (GPS). All GPS data collected by Forest Management Branch.

Kluane National Park and Reserve

Haines Junction  
6.9 km

Haines Road

to Operating Unit 1

