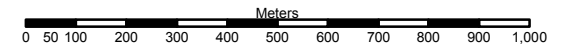


Yukon Forest Management Branch Operations Map

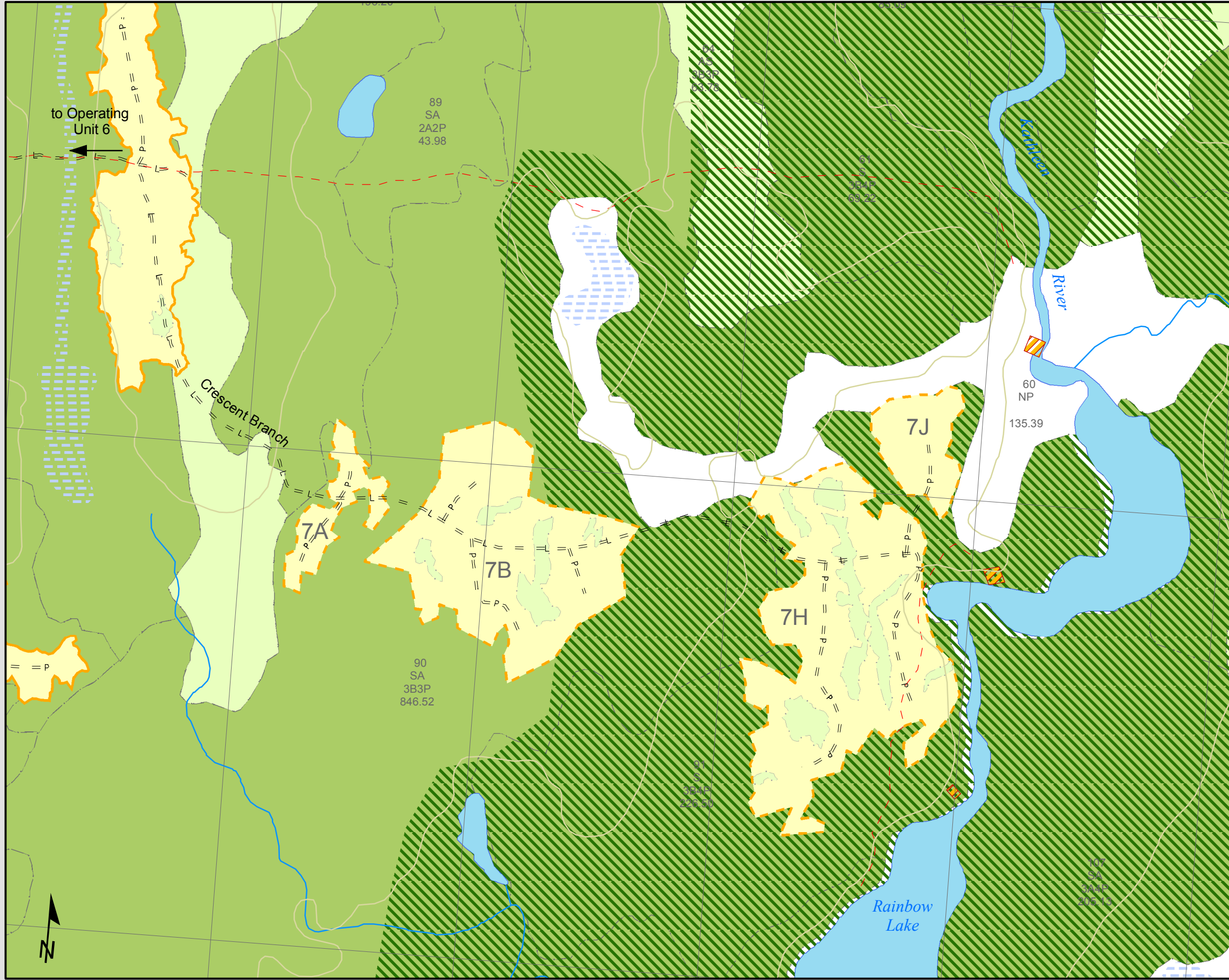
Quill Creek Bench HPA Operating Unit #7 - Overview

August 2005

1:15 000 scale
when printed at 11" x 17"



Yukon Albers Equal Area Projection (NAD 83)



Legend

- Located Blocks
- Proposed Blocks
- Wildlife Corridor
- Riparian Reserve
- FN Settlement Lands
- Private Lot
- Non Productive (NP) Forest
- Trembling Aspen
- White Spruce
- Waterbodies
- Wetlands
- Dry River Bed
- Gravel Pit
- Nest
- Highway
- Existing Trail
- Existing 2WD Road
- Located 2WD Road
- Proposed 2WD Road
- Watercourse
- Contour
- Topographic Features

Forest Cover Codes

Species Code — 19 — Stand Number
 Species Code — SA — Height, crown closure, age and site class code
 Area in hectares — 114.99

Species Codes	Height Class	Crown Closure	Age Class	Site Class
SW: White Spruce	1: 0-4 m	A: 1-15%	1: 1-2 yrs	L: <10 m
SB: Black Spruce	2: 5-9 m	B: 16-25%	2: 21-40 yrs	P: 10-14 m
P: Lodgepole Pine	3: 10-13 m	C: 26-30%	3: 41-60 yrs	M: 15-19 m
L: Larch	4: 14-16 m	D: 31-35%	4: 61-80 yrs	G: 20+ m
A: Aspen	5: 17-19 m	E: 36-45%	5: 81-100 yrs	
B: Balsam Poplar	6: 20-24 m	F: 46-55%	6: 101-120 yrs	
W: White Birch	7: 25-30 m	G: 56-75%	7: 121-150 yrs	
F: Alpine Fir	8: 31-35 m	H: 76-100%	8: 151-180 yrs	
			9: 181+ yrs	

Data Sources and Disclaimers:

National Topographic Data Base (NTDB) base data compiled by Government of Canada, Natural Resources Canada (NRCan), at 1:50 000 scale.

Harvest blocks and branch roads determined by field Global Positioning System (GPS). All GPS data collected by Forest Management Branch.