

PLAN OF SURVEY & SUBDIVISION
OF
BLOCKS 14-23, AND
REMAINDER OF BLOCK 10
HAINES JUNCTION
YUKON TERRITORY

BY R.T. McCURDY, D.L.S. IN 1957

SCALE: 1 INCH = 100 FEET

This survey was executed during the period of July 9th to July 25th

LEGEND

Bearings are astronomic, derived from bearing 160° 26' 00" of course H-1844 to H-1845 of the Alaska Highway, L.S.B.A.C. Records Plan 40905, and referred to the meridian through monument H-1827, Plan 40904.
D.L.S. and C.L.S. standard posts are shown thus.....
D.L.S. old pattern iron posts are shown thus.....
All posts are marked with the appropriate lot number, block number, date, and R. for Road, where necessary.
Lot numbers are shown thus.....
Block numbers are shown thus.....
R stands for D.L.S. or C.L.S. standard post; L for D.L.S. old pattern iron post; RH for four pits; M for mound; Fd for found; Md. for made; L.S.B.A.C. for Legal Surveys and Aeronautical Charts
Lands dealt with by this plan are shown thus.....

Department of Northern Affairs and National Resources
Ottawa, May 28, 1958
Re Section 43, Canada Lands Surveys Act
This survey and plan are satisfactory

R. J. Curran
Deputy Minister

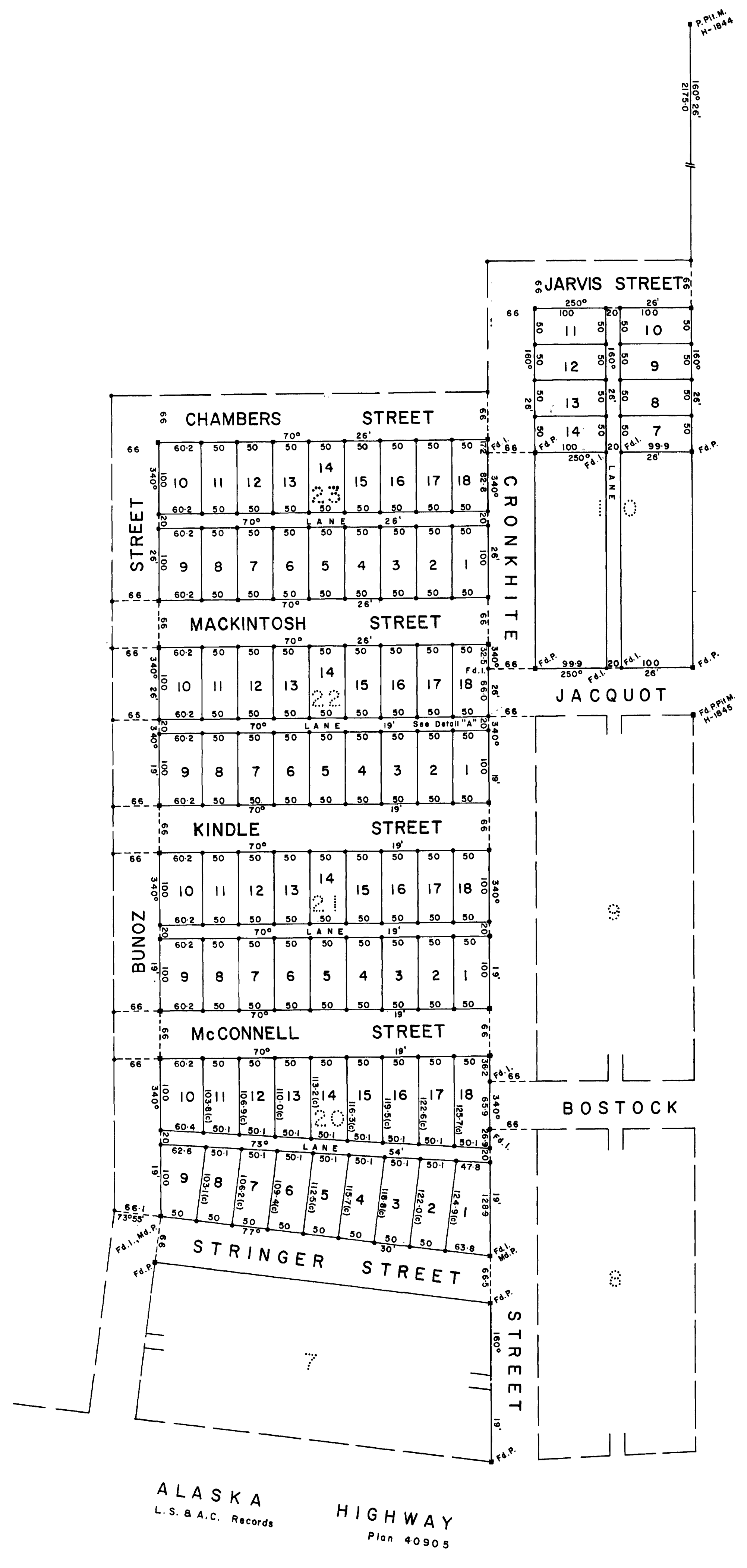
Department of Mines and Technical Surveys
Ottawa, July 2, 1958
Re Section 43, Canada Lands Surveys Act
Continued

P. J. Thickett
Surveyor General

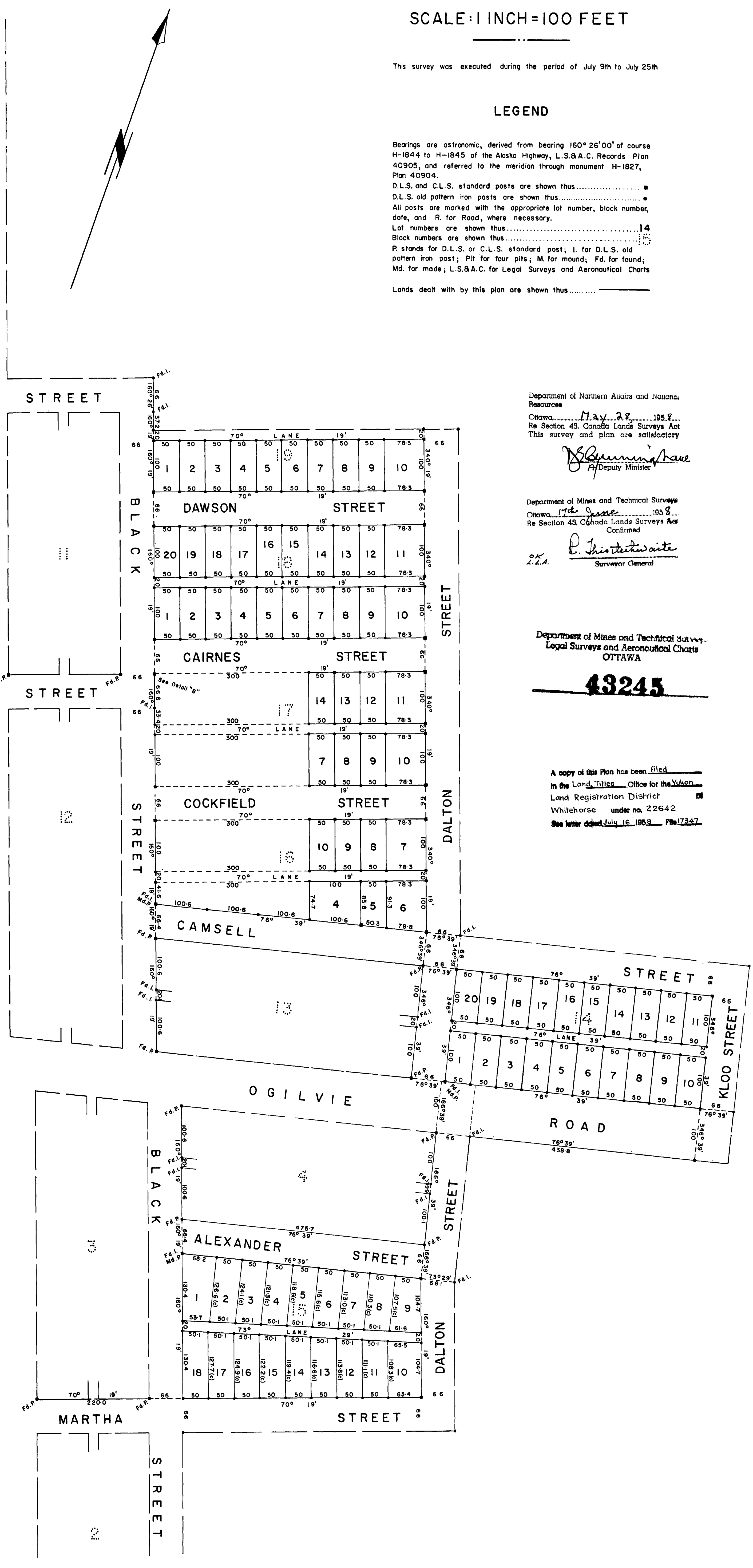
Department of Mines and Technical Surveys
Legal Surveys and Aeronautical Charts
OTTAWA

43245

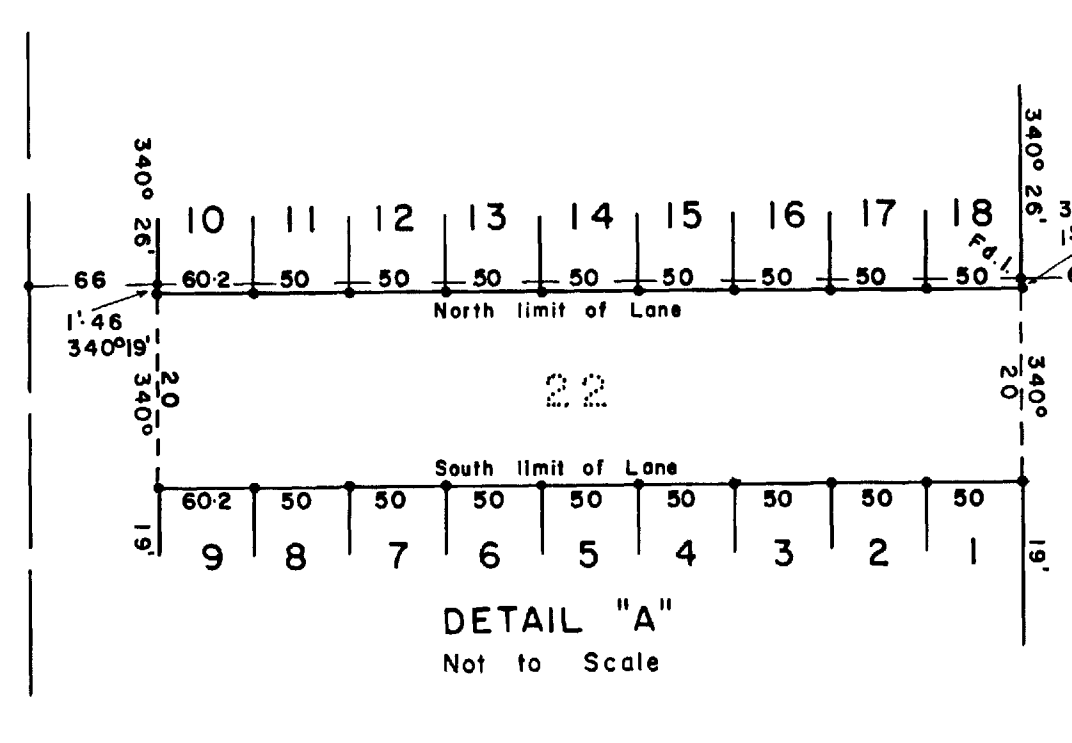
A copy of this Plan has been filed
in the Land Titles Office for the Yukon
Land Registration District
Whitehorse under no. 22642
Date letter dated July 18, 1958 - File 17247



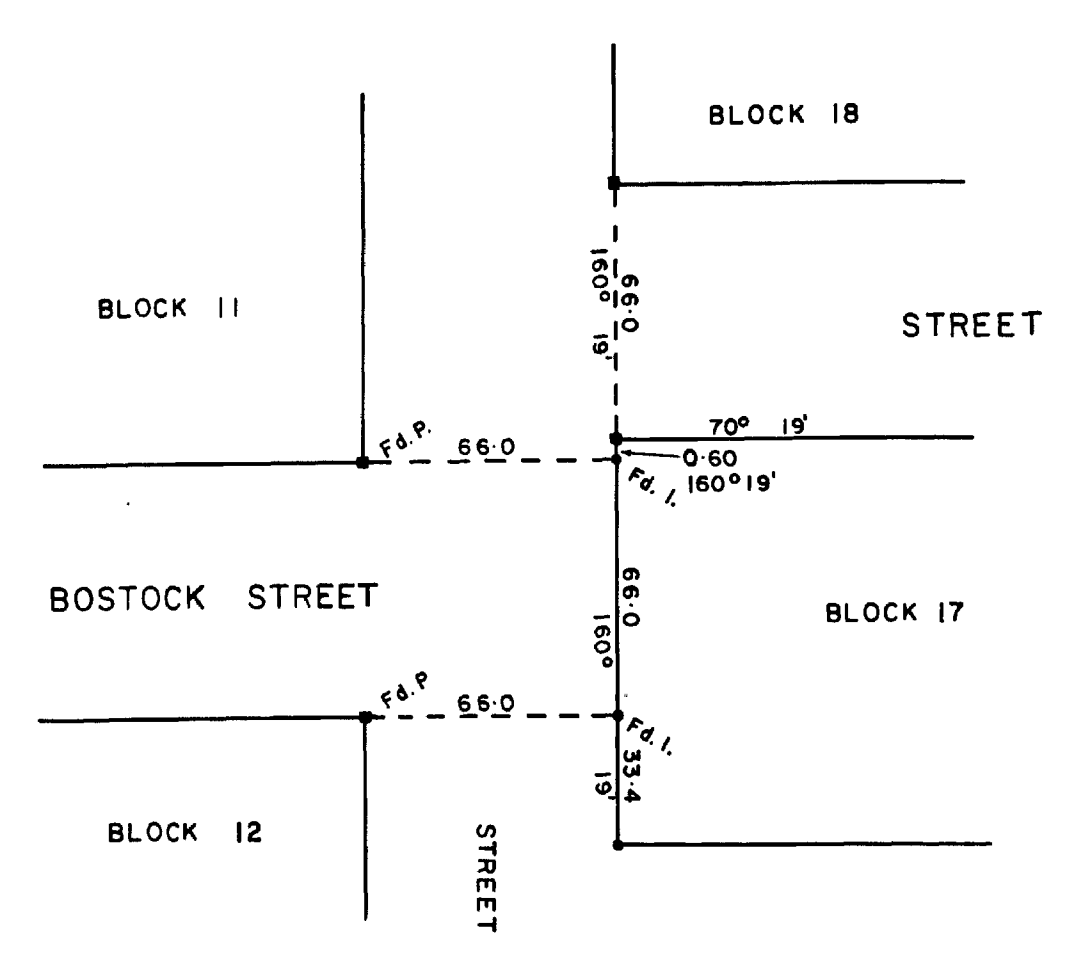
ALASKA HIGHWAY
L.S.B.A.C. Records
Plan 40905



HAINES CUT-OFF ROAD
L.S.B.A.C. Records
Plan 42118



DETAIL "A"
Not to Scale



DETAIL "B"
Not to Scale

Note:
For survey of Blocks 1 to 9, 11 to 13 and southerly portion of Block 10, refer to L.S.B.A.C. Records, Plan 41519