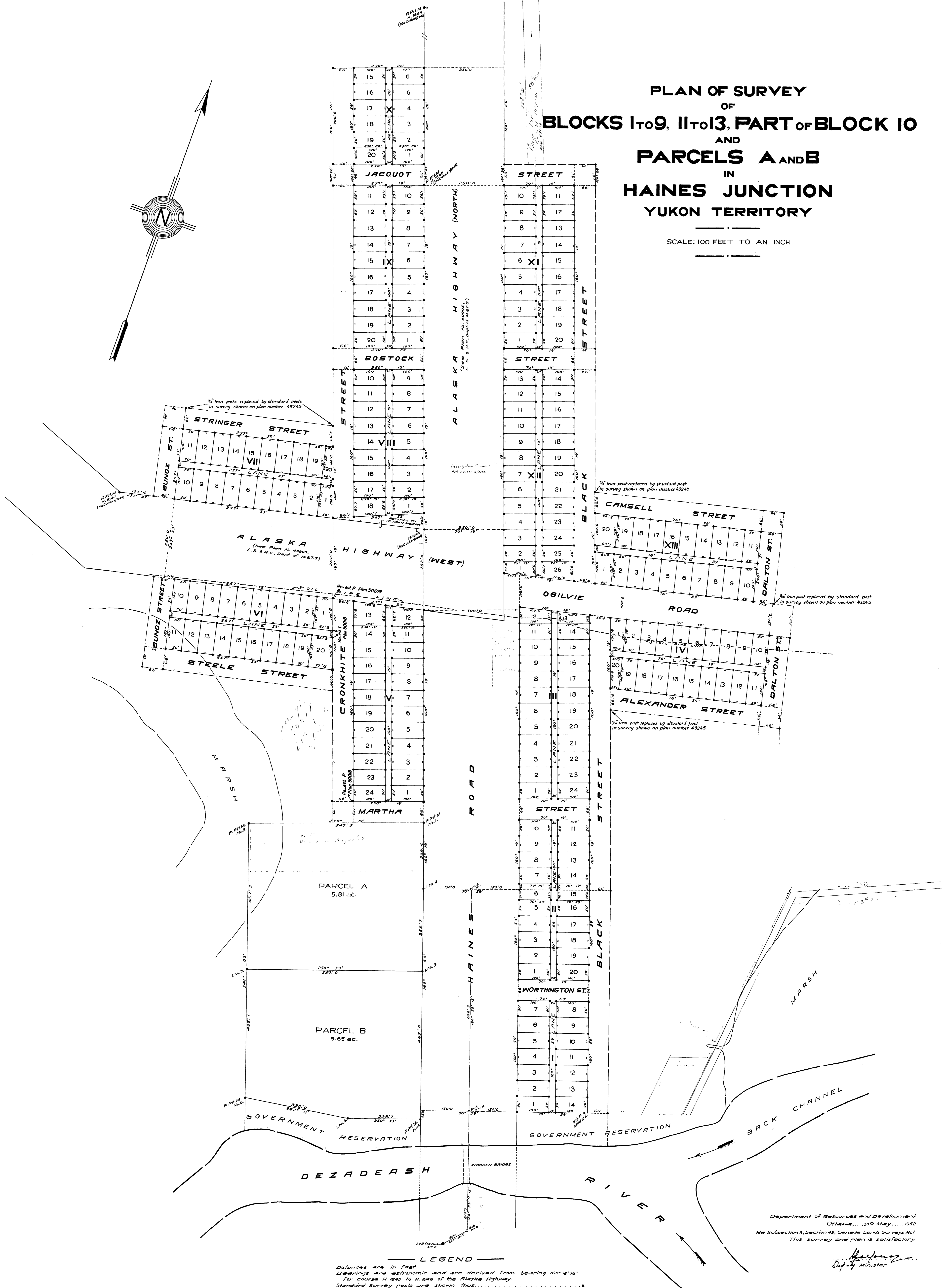
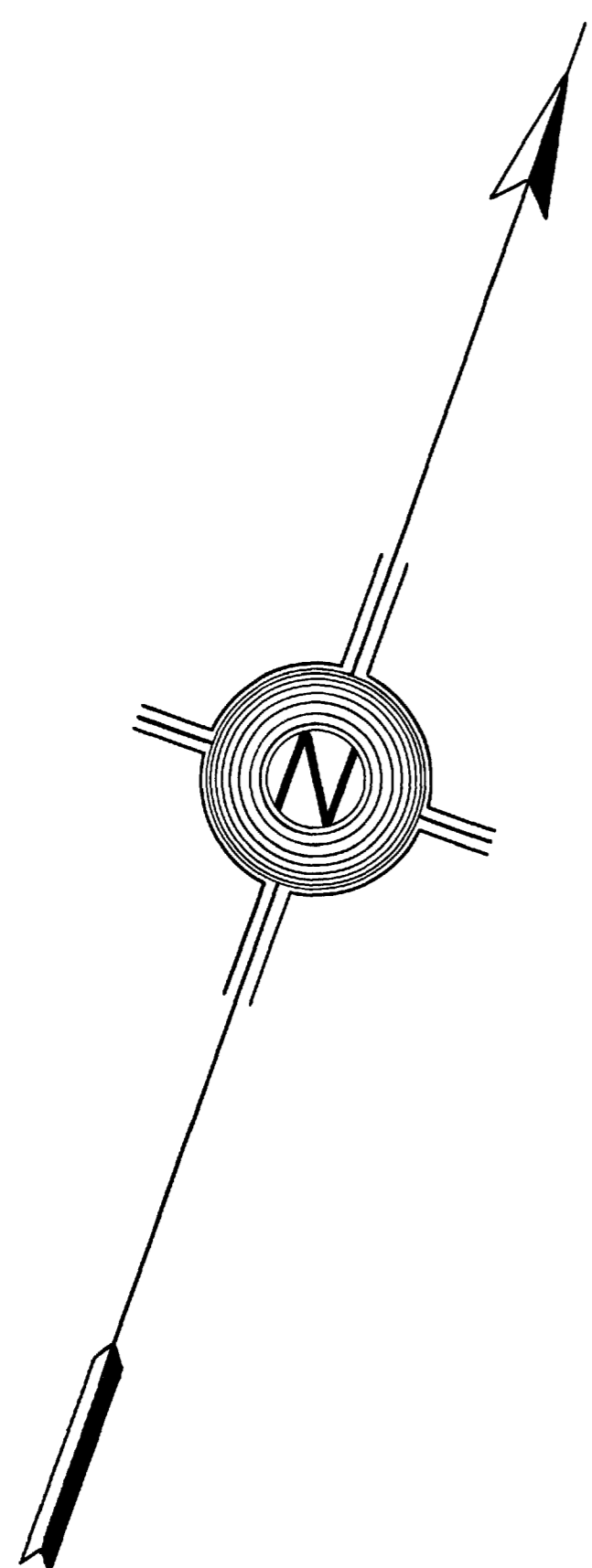


PLAN OF SURVEY OF BLOCKS I TO 9, II TO 13, PART OF BLOCK 10 AND PARCELS A AND B IN HAINES JUNCTION YUKON TERRITORY

SCALE: 100 FEET TO AN INCH



LEGEND

Distances are in feet.
 Bearings are astronomic and are derived from bearing 160° 15' 58"
 for course H. 1845 to H. 1846 of the Alaska Highway.
 Standard survey posts are shown thus:
 3/4" iron post; 1/4" iron post; 1/2" iron post; 1" iron post; M. For mound;
 Lot numbers are shown thus: 2, 8, 14, 19.
 Block numbers are shown thus: II, IX, X.
 Parcels are lettered thus: A, B
 Inscriptions on Highway monuments are shown thus: H. 1846.
 P. stands for standard post; Pit. For Four pits; I. For 1/4" iron post; M. For mound;
 W. For witness.
 Areas where shown are in acres.
 The name of a monument is that of the surveyor who erected
 the monument. All monuments not so designated were erected by
 J. B. Walcott, D.L.S. in 1950.
 Lands dealt with by this plan are bordered thus:

Compiled from official surveys by
 K. F. McCusker, D.L.S., 1946
 K. F. McCusker, D.L.S., 1949
 J. B. Walcott, D.L.S., 10th October, 1950

Department of Resources and Development
 Ottawa, 30th May, 1952
 Re Subsection 3, Section 43, Canada Lands Survey Act
 This survey and plan is satisfactory
 Deputy Minister

Department of Mines and Technical Surveys
 Ottawa, 3rd June, 1952
 Approved and Confirmed
 Surveyor General

A copy of this plan is registered in the
 L.T.O. for the Yukon Land Registration
 District of Dawson, Y.T. under number
 15794 (156 167 41-52-5-52 510-15308 5-52)