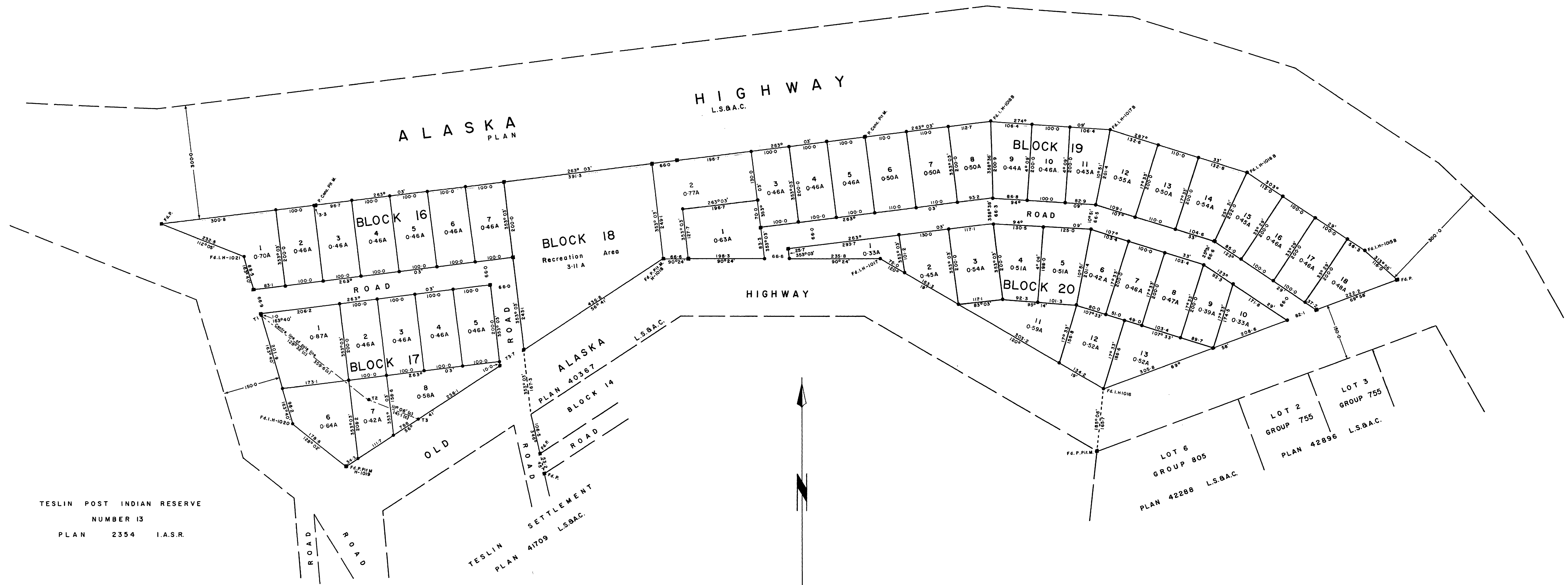


PLAN
OF
SURVEY AND SUBDIVISION OF
BLOCKS 16 TO 20
TESLIN
YUKON TERRITORY
LAT. 60°10' - LONG. 132°45' (approx)

BY R. T. McCURDY, D.L.S. IN 1957
SCALE : 1 INCH = 100 FEET



TESLIN POST INDIAN RESERVE
NUMBER 13
PLAN 2354 I.A.S.R.

LEGEND

Bearing are astronomic, derived from an observation on Polaris and referred to the meridian through monument P H-1014AA of the Alaska Highway, Plan
D.L.S. and C.L.S. standard posts are shown thus ■
D.L.S. old pattern iron posts are shown thus ●
P stands for D.L.S. or C.L.S. standard post; I. for D.L.S. old pattern iron; Pit for four pits; M. for mound; F.d. for found; P. conc. for standard post set in concrete; (c) for calculated; A for acres; L.S.B.A.C. for Legal Surveys and Aeronautical Charts; I.A.S.R. for Indian Affairs Survey Records.

Lands dealt with by this plan are bordered thus ———
All posts are marked with the appropriate lot number, block number, date, and R for road, where necessary.

Department of Northern Affairs and National Resources
Ottawa, August 1, 1958

Re Section 43, Canada Lands Surveys Act
This survey and plan are satisfactory

[Signature]
Deputy Minister

Department of Mines and Technical Surveys
Ottawa, August 5, 1958

Re Section 43, Canada Lands Surveys Act
Confirmed

[Signature]
Asking Surveyor General
D. R. Slessor

Department of Mines and Technical Surveys
Legal Surveys and Aeronautical Charts
OTTAWA

43312

A copy of this Plan has been filed
in the Land Titles Office for the Yukon
Land Registration District
at
Whitehorse under no. 22684
See letter dated Aug. 22, 1958. File 62039

Field notes for this plan are
recorded under No. 43313