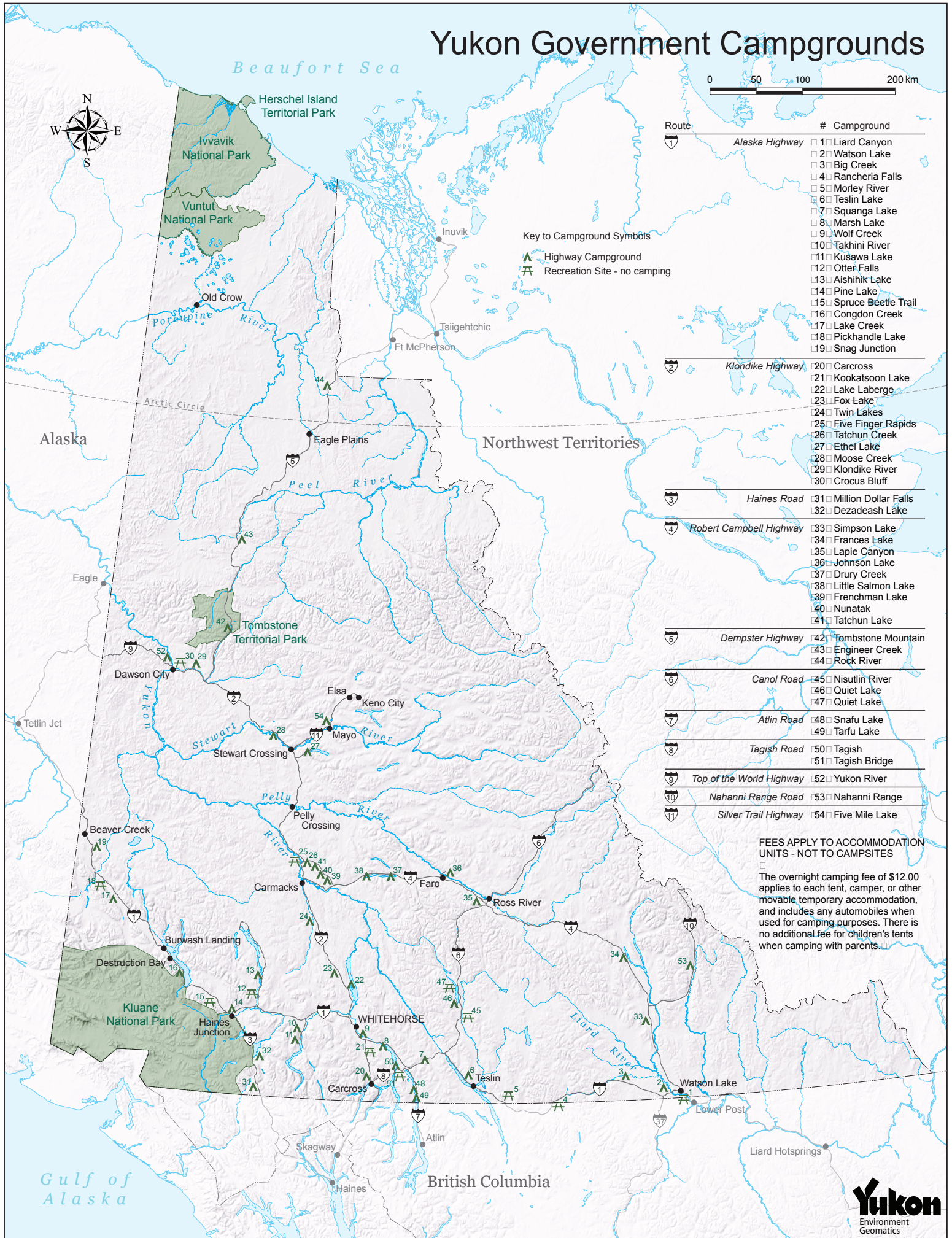


Yukon Government Campgrounds



Key to Campground Symbols
 ▲ Highway Campground
 ⚠ Recreation Site - no camping

Route	#	Campground				
1	Alaska Highway	1 □ Liard Canyon 2 □ Watson Lake 3 □ Big Creek 4 □ Rancheria Falls 5 □ Morley River 6 □ Teslin Lake 7 □ Squanga Lake 8 □ Marsh Lake 9 □ Wolf Creek 10 □ Takhini River 11 □ Kusawa Lake 12 □ Otter Falls 13 □ Aishihik Lake 14 □ Pine Lake 15 □ Spruce Beetle Trail 16 □ Congdon Creek 17 □ Lake Creek 18 □ Pickhandle Lake 19 □ Snag Junction				
	2	Klondike Highway	20 □ Carcross 21 □ Kookatsoon Lake 22 □ Lake Laberge 23 □ Fox Lake 24 □ Twin Lakes 25 □ Five Finger Rapids 26 □ Tatchun Creek 27 □ Ethel Lake 28 □ Moose Creek 29 □ Klondike River 30 □ Crocus Bluff			
		3	Haines Road	31 □ Million Dollar Falls 32 □ Dezadeash Lake		
			4	Robert Campbell Highway	33 □ Simpson Lake 34 □ Frances Lake 35 □ Lapie Canyon 36 □ Johnson Lake 37 □ Drury Creek 38 □ Little Salmon Lake 39 □ Frenchman Lake 40 □ Nunatak 41 □ Tatchun Lake	
		5		Dempster Highway	42 □ Tombstone Mountain 43 □ Engineer Creek 44 □ Rock River	
				6	Canol Road	45 □ Nisutlin River 46 □ Quiet Lake 47 □ Quiet Lake
					7	Atlin Road
		8				Tagish Road
				9	Top of the World Highway	52 □ Yukon River
		10		Nahanni Range Road	53 □ Nahanni Range	
		11		Silver Trail Highway	54 □ Five Mile Lake	

FEEES APPLY TO ACCOMMODATION UNITS - NOT TO CAMPSITES
 □ The overnight camping fee of \$12.00 applies to each tent, camper, or other movable temporary accommodation, and includes any automobiles when used for camping purposes. There is no additional fee for children's tents when camping with parents. □