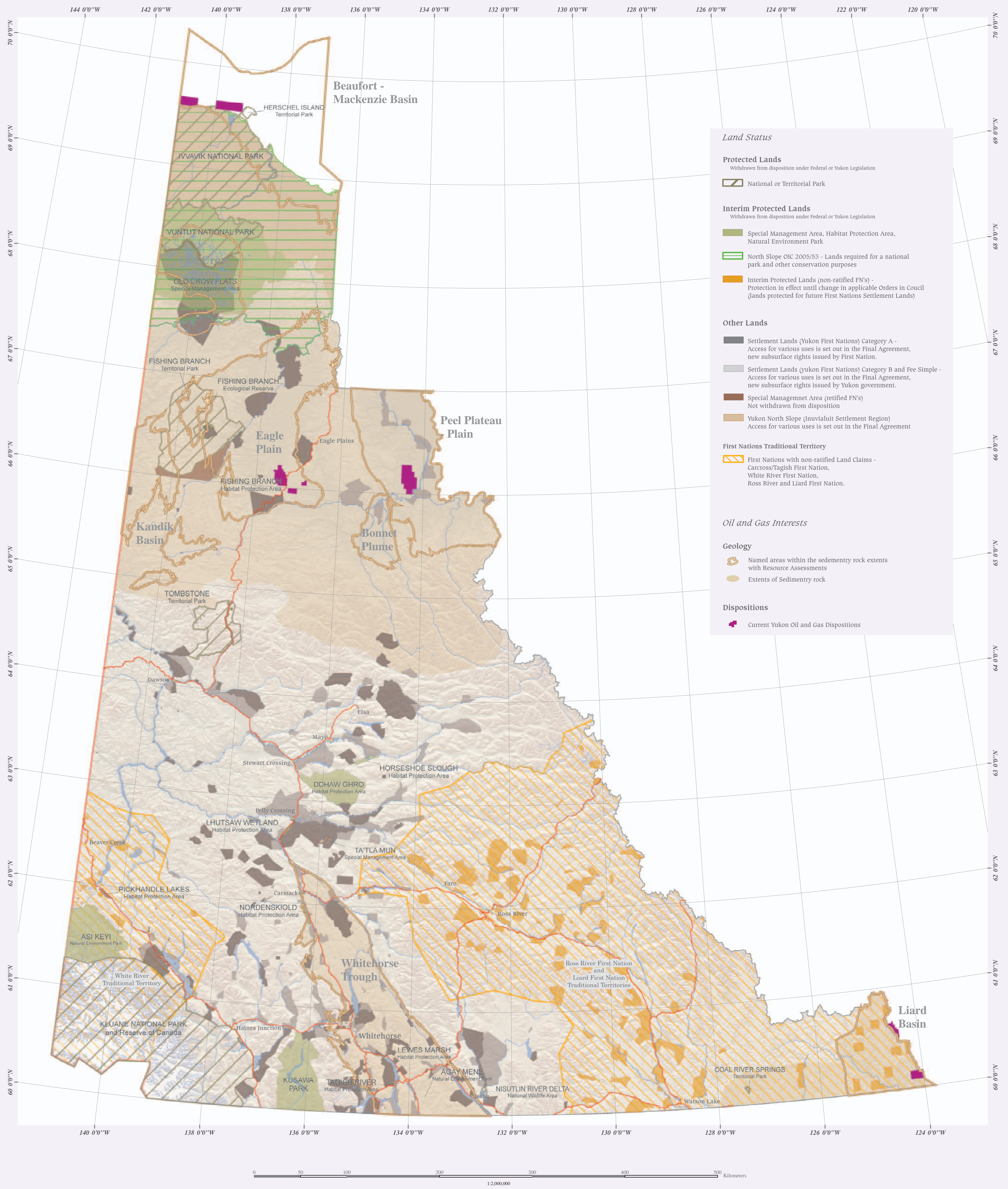


Yukon Land Status with Oil and Gas Interests



This map identifies those Yukon lands which may be subject to terms and conditions of use and access other than those set out in federal or Yukon laws of general application. The terms and conditions of use that apply to those lands vary and are set out in their relevant legislation.

This map reflects our best understanding of the current status of the various Yukon lands portrayed. Every effort has been made to ensure accurate representation of the type, size, and location of designation. However, it does not constitute a legal opinion. For clarification, readers should consult with the various agencies responsible for the administration of those lands.

The land depicted is a generalized graphical representation of areas that are appropriate to be displayed at a 1:2 000 000 scale; smaller areas are not shown. The accuracy of the digital information is adequate for the representation at this scale but the data should not be used at a more detailed scale. The data are not to be used for statistical analysis, nor should they be used to resolve boundary issues.

Yukon Albers Equal Area Projection

False Easting: 500000.000000
 False Northing: 500000.000000
 Central Meridian: -132.500000
 Standard Parallel 1: 68.000000
 Standard Parallel 2: 61.666667
 Latitude Of Origin: 59.000000
 Linear Unit: Meter (1.000000)

North American Datum 1983 (NAD83)

This document was developed in consultation with Governance, Indian and Northern Affairs Canada (INAC), Land Claims Secretariat (YTG), Habitat Protection (YTG), Mining Recorder Offices (YTG), and Oil and Gas Management Branch (YTG)

Contact Information:
 Bruce McLean - Habitat Protection, Environment, YTG
 Greg Kent - Land Claims Secretariat, Executive Council Office, YTG
 Michael Draper - Lands Branch, Energy, Mines and Resources, YTG
 Glenn Southwick - Mineral Resources, Energy, Mines and Resources, YTG
 Debra Wortley - Oil and Gas Management Branch, YTG

Designation

- Umbrella Final Agreement (CYFN)
- Yukon First Nation Final Agreements
- Gwich'in Comprehensive Land Claim Agreement
- The Inuvialuit Final Agreement
- Parks and Lands Certainty Act
- National Parks Act
- Privy Council Orders of Canada
- Yukon Orders in Council

Cartographic Representation

- Yukon First Nation Final Agreements for settlement lands and SMAs
- Governance, DIAND: settlement lands, interim protected lands, special management areas
- Natural Resources Canada (NRCAN): infrastructure and topographical data, national and territorial parks, habitat protection areas, special management areas, surveyed settlement lands
- Department of Environment (YTG): 90 m DEM and shaded relief
- Yukon Oil and Gas Management Branch - Oil and Gas Dispositions
- Yukon Geological Survey - Geology